



[Home](#) » [DOMUS LINE](#) » **DOMUS LINE RC3 Multichannel Remote Control For LED Lights**
Instruction Manual 

Contents [[hide](#)]

- [1 DOMUS LINE RC3 Multichannel Remote Control For LED Lights](#)
- [2 Specifications](#)
- [3 Function](#)
- [4 RC3 + X-DRIVER + CM2-XD](#)
- [5 Setup](#)
- [6 RECEIVER](#)
- [7 RC3 BATTERY REPLACEMENT](#)
- [8 FAQ](#)
- [9 Documents / Resources](#)
 - [9.1 References](#)



DOMUS Line

DOMUS LINE RC3 Multichannel Remote Control For LED Lights

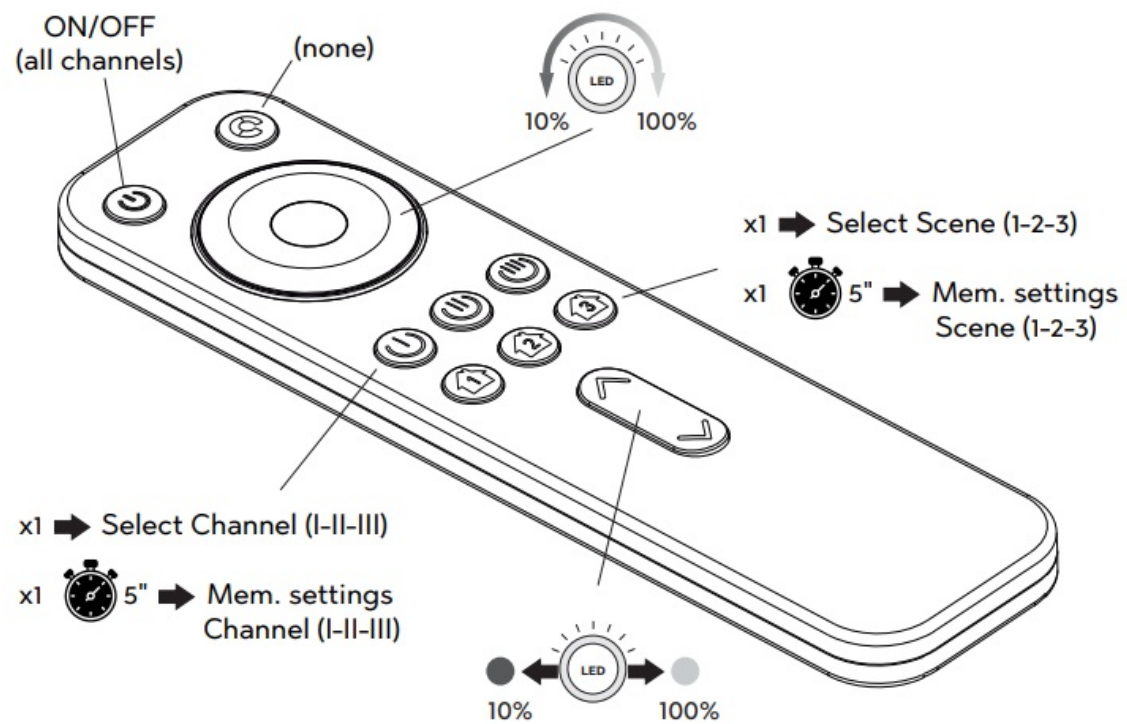


Specifications

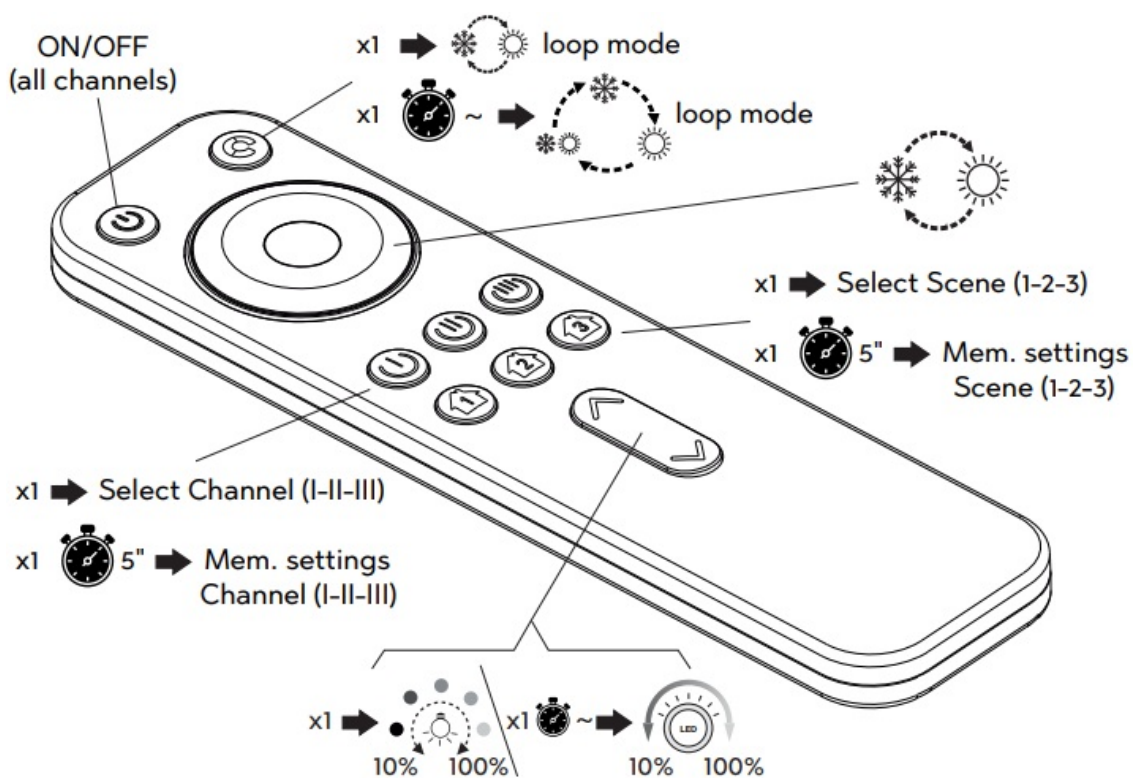
- Manufacturer: Domus Line S.r.l.
- Model: RC3 multi-channel remote control
- Functions: Single Colour and Dual Colour D-Motion
- Channels: I / II / III
- Mem. Settings: 5
- Compatibility: RC3 + X-DRIVER + CM2-XD

Function

RC3 single colour functions



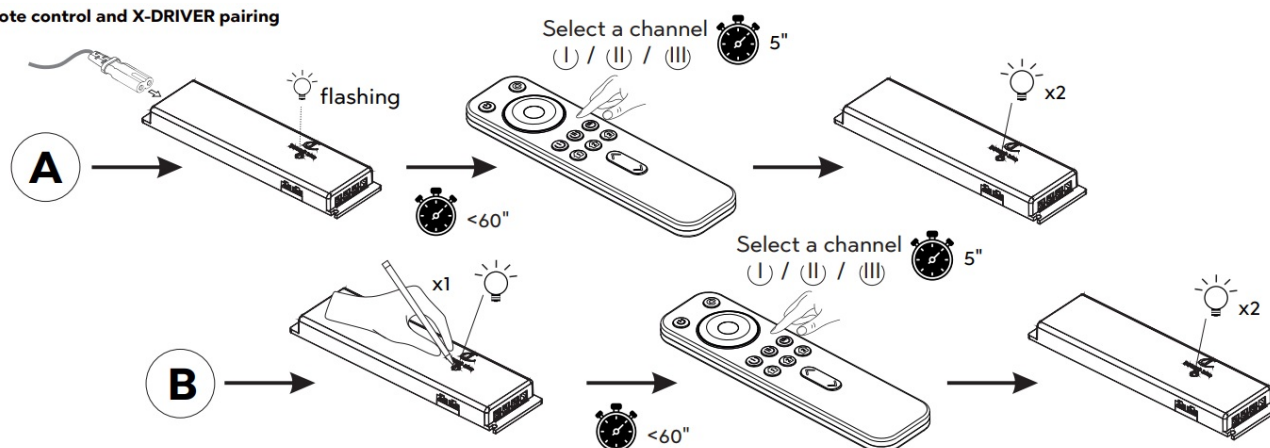
RC3 dual colour D-Motion functions



RC3 + X-DRIVER + CM2-XD

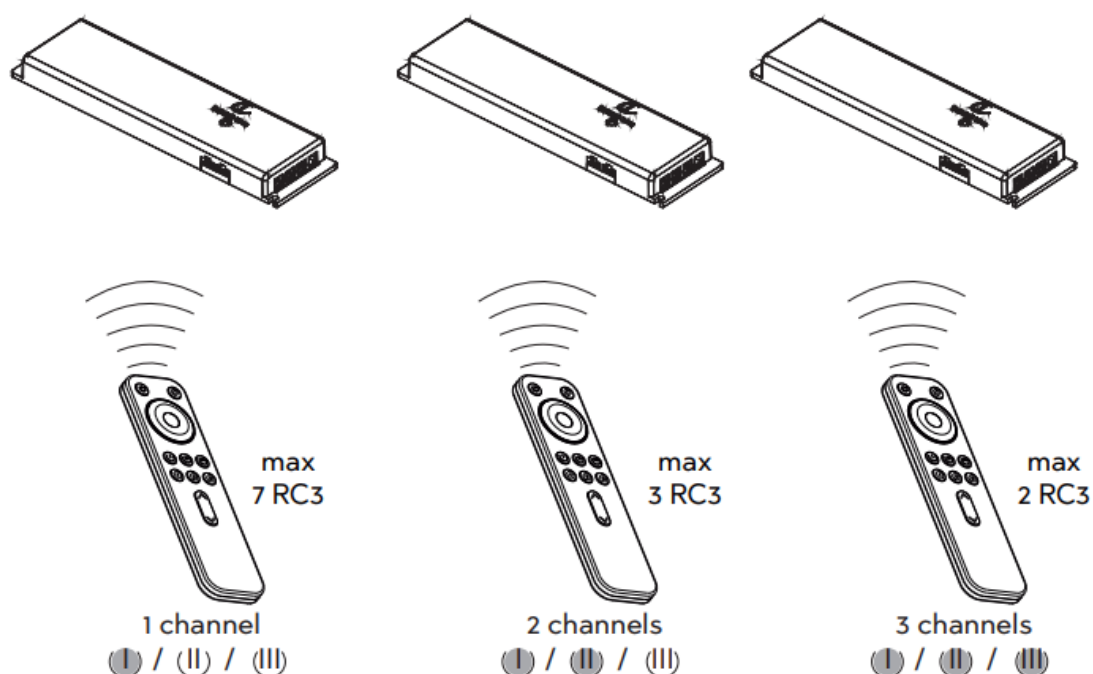
Remote control and X-DRIVER pairing

Remote control and X-DRIVER pairing

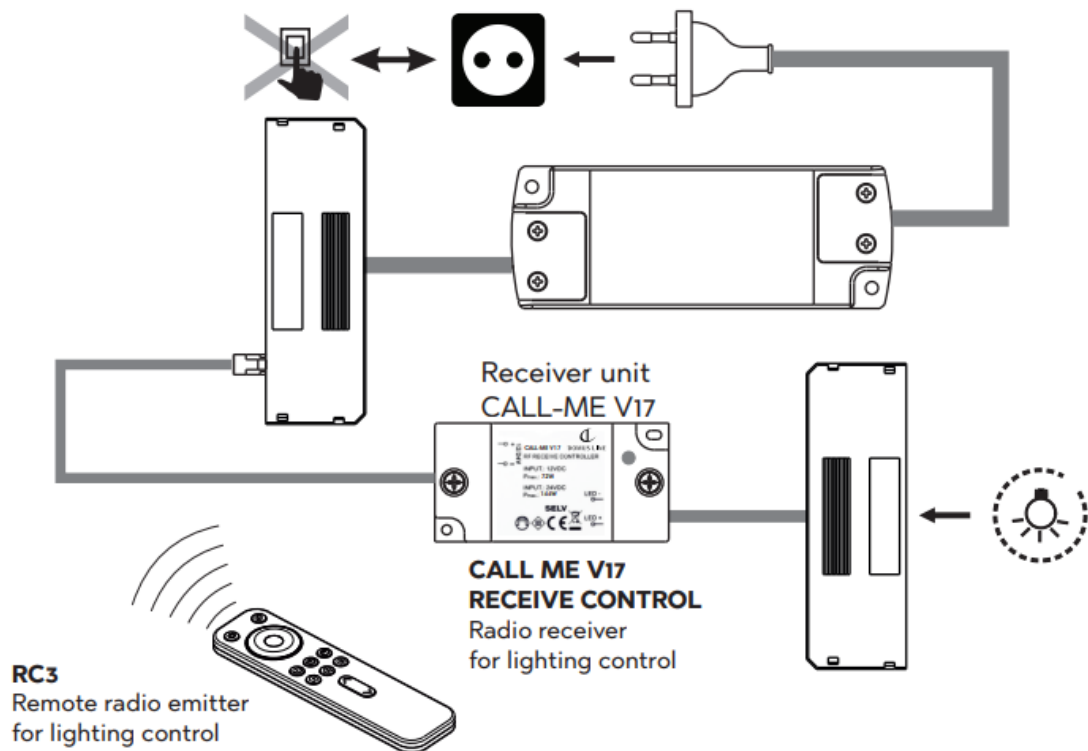


Setup

RC3 + X-DRIVER setup



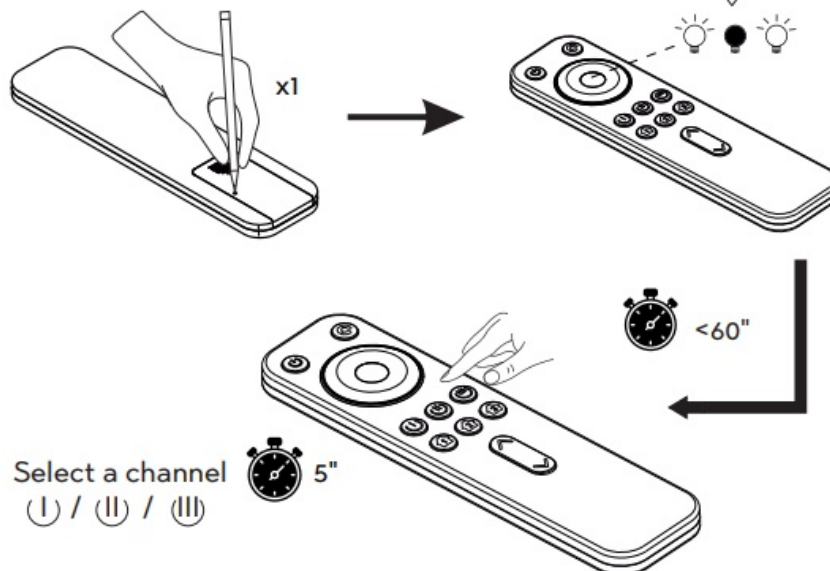
RC3 + X-DRIVER (D-M) SETUP



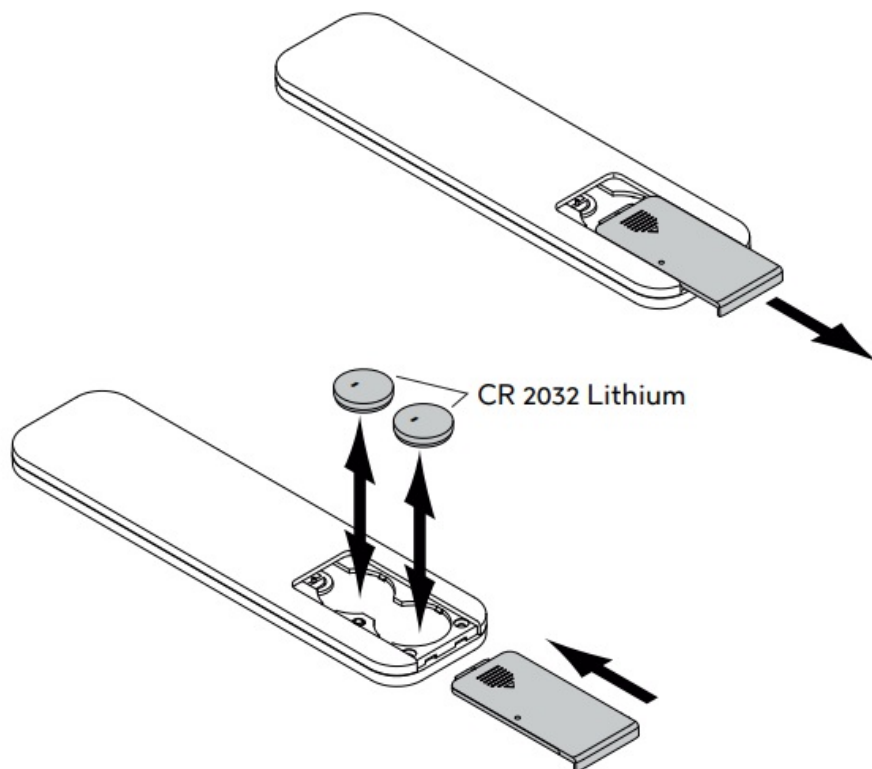
RC3 SETUP

Remote control matched transmitter

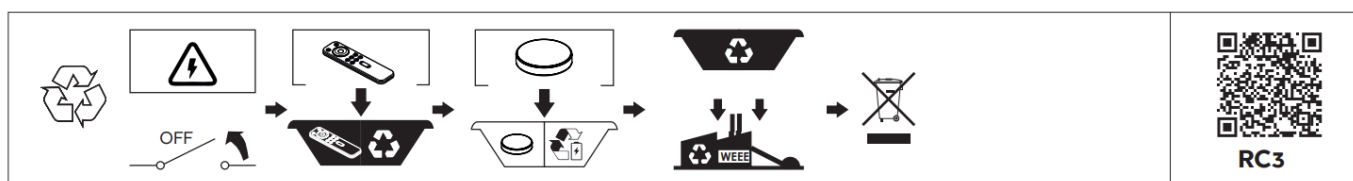
White for single colour receiver
White/Yellow for dual colour D-Motion receiver
RGB = (not available)



RC3 BATTERY REPLACEMENT



Other Information



FAQ

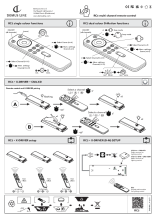
Q: How do I reset the remote control?

A: To reset the remote control, press and hold the reset button for 10 seconds.

Q: Can I pair the remote control with multiple X-DRIVER units?

A: Yes, the remote control can be paired with multiple X-DRIVER units by following the pairing process for each unit separately.

Documents / Resources



[DOMUS LINE RC3 Multichannel Remote Control For LED Lights \[pdf\]](#)

Instruction Manual

RC3 Multichannel Remote Control For LED Lights, RC3, Multichannel Remote Control For LED Lights, Remote Control For LED Lights, LED Lights

References

- [User Manual](#)

DOMUS LINE

DOMUS LINE, Led Lights, Multichannel Remote Control For LED Lights, RC3, RC3 Multichannel Remote Control For LED Lights, Remote Control For LED Lights

Leave a comment

Your email address will not be published. Required fields are marked *

Comment *

Name

Email

Website

☐ Save my name, email, and website in this browser for the next time I comment.

Post Comment

Search:

e.g. whirlpool wrf535swhz

Search

[Manuals+](#) | [Upload](#) | [Deep Search](#) | [Privacy Policy](#) | [@manuals.plus](#) | [YouTube](#)

This website is an independent publication and is neither affiliated with nor endorsed by any of the trademark owners. The "Bluetooth®" word mark and logos are registered trademarks owned by Bluetooth SIG, Inc. The "Wi-Fi®" word mark and logos are registered trademarks owned by the Wi-Fi Alliance. Any use of these marks on this website does not imply any affiliation with or endorsement.