



DOMUS LINE RC1 Receiver Controller TWF Instruction Manual

[Home](#) » [DOMUS LINE](#) » DOMUS LINE RC1 Receiver Controller TWF Instruction Manual 

Contents

- [1 DOMUS LINE RC1 Receiver Controller TWF Instruction](#)
- [2 INSTALLATION MANUAL](#)
- [3 INSTALLATION MANUAL](#)
- [4 INSTALLATION MANUAL](#)
- [5 FCC warning:](#)
- [6 Documents / Resources](#)
- [7 Related Posts](#)



DOMUS LINE RC1 Receiver Controller TWF Instruction



INSTALLATION MANUAL

DOMUS LINE Srl

Via Maestri del Lavoro, 1 33080 PORCIA _ PN _ Italy

phone

0039 0434 595911

fax

0039 0434 923345

e-mail website

info@domusline.com

www.domusline.com

Protection class III device. Power must be supplied by a safe power supply.

The product must be disposed of separately from urban waste, delivering it to the collection centres established by the prevailing standard. The adequate sorted waste collection contributes to preventing negative effects on the environment and health and favours reuse and/or recycling materials. Incorrect disposal of the product implies the application of the administrative sanctions envisaged by the prevailing regulation.

Device only for indoor installation. Leuchte nur für die Installation im Innenbereich. L'appareil doit être uniquement . Aparato para un solo uso en un ambiente interior. Apparecchio per sola installazione in ambiente interno.

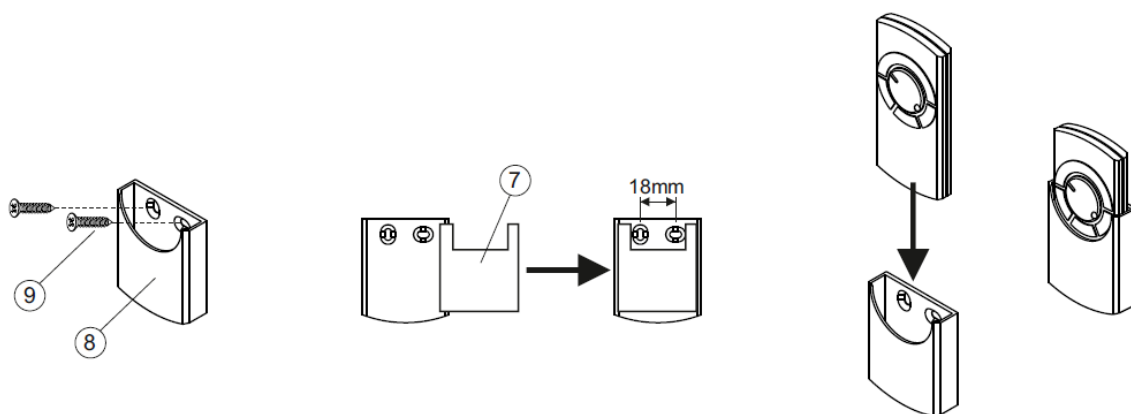


Fig 1

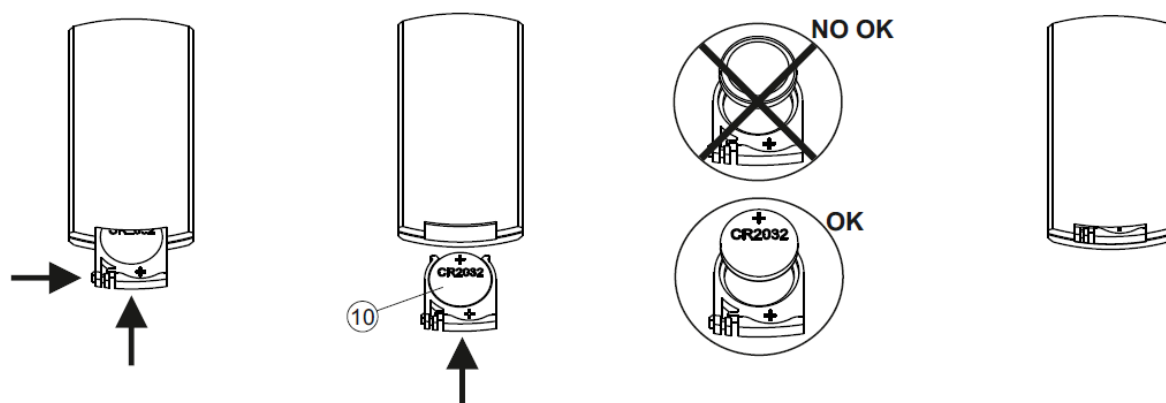


Fig 2

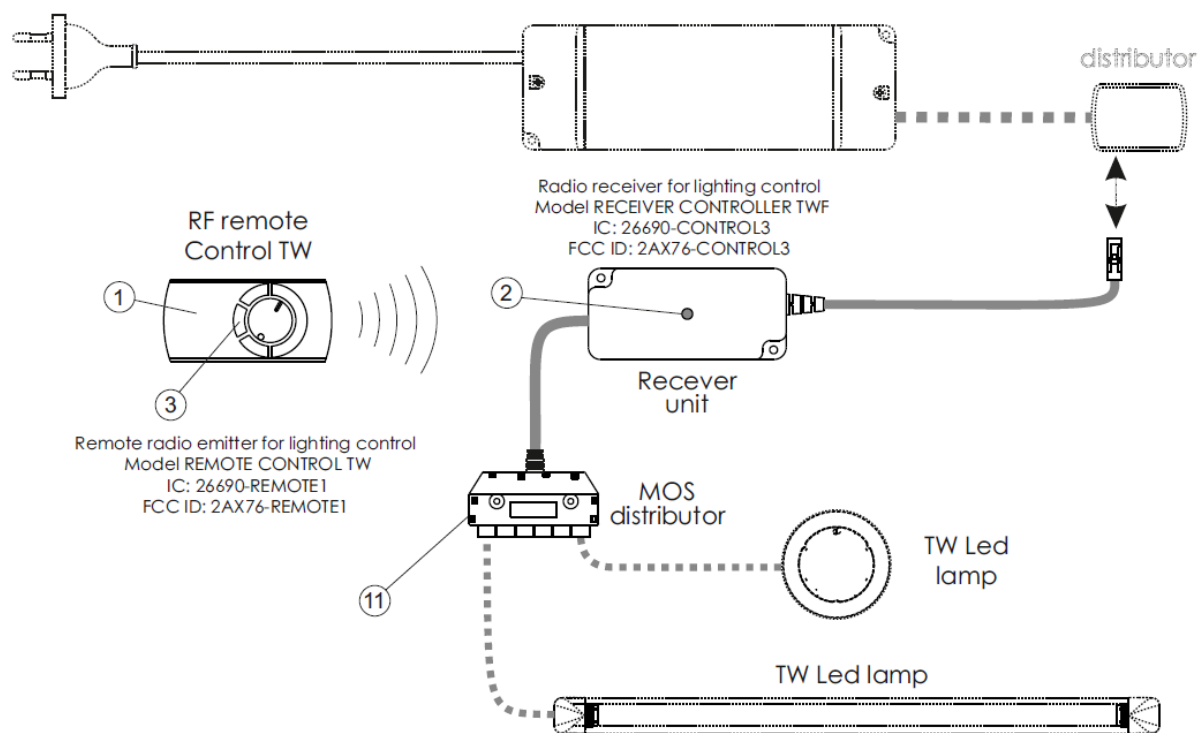
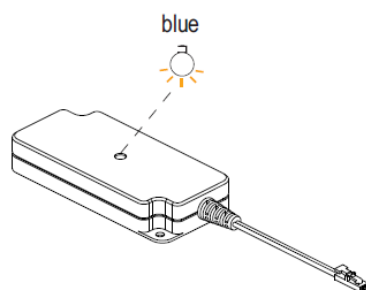
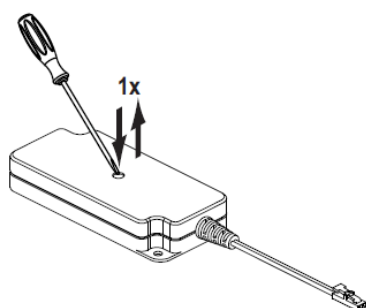
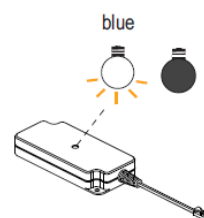


Fig 3

Remote Control matched transmitter



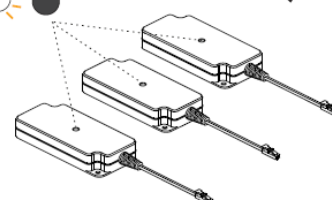
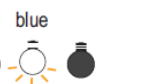
Remote controller TW



Max.number of remote controllers connected for one receiver: 7pcs

Fig 4

Remote controller TW



Max.number of receiver connected for one remote controller: 7pcs
Remote range max. 15m

Fig 5

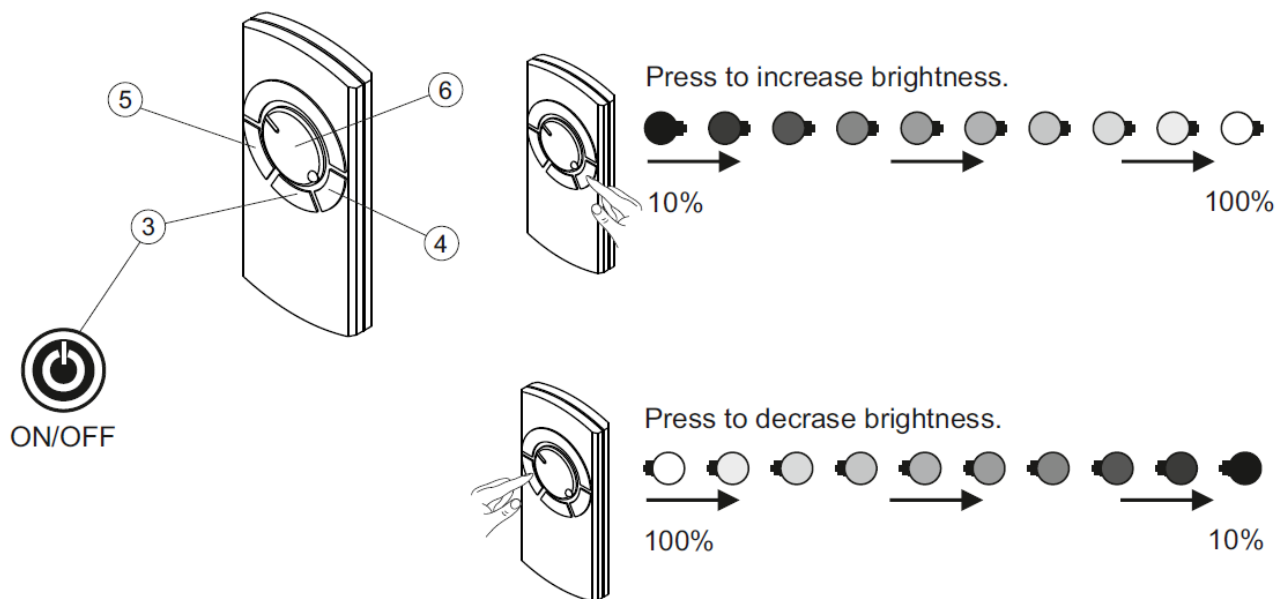


Fig 6

Reset matched transmitter

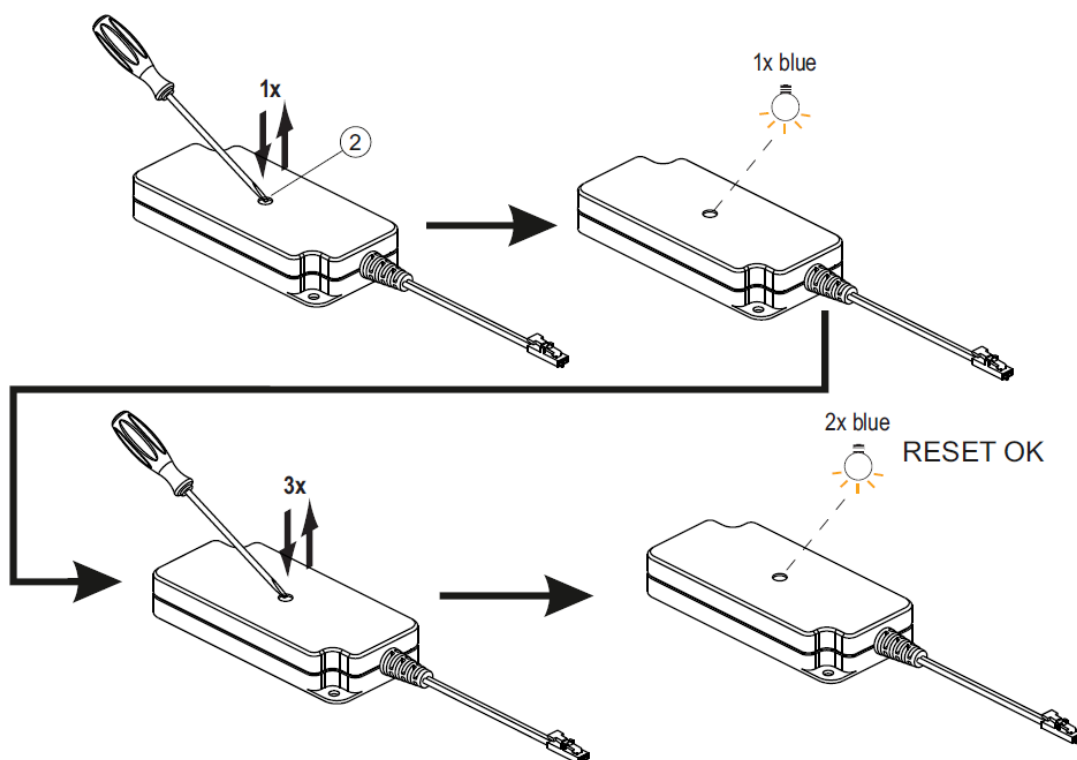


Fig 7

INSTALLATION MANUAL

TECHNICAL DATA:

FOR RECEIVER CONTROLLER TWF: Power supply: 24Vdc Max power: 60Watt

FOR REMOTE CONTROL TW : Remote control range 15 meters. The battery type used: CR2032 (3V) lithium.

WARNINGS

Safety is guaranteed if these instructions are followed and therefore they must be kept. Installation may require qualified personnel to be involved. Before proceeding with the installation of the device ensure that the environmental conditions are in compliance with and suitable for the product characteristics. Before any operation on the device remove mains power.

INSTALLATION:

- Fix the support bracket (8) (fig.1) using the screws (9) supplied or a double-sided tape (7).
- Insert the battery in the remote control (10) as shown in fig.2.

PROGRAMMING THE RECEIVER Fig.4

(maximum 7 transmitters with one receiver):

- Connect the receiver to the converter (not supplied in the package) as shown in fig.4.
- Connect the luminaires.

CAUTION: do not connect any luminaire directly to the connector of the receiver, but always use the voltage distributor 11 supplied in the package.

- Connect the power plug to the power supply, the blue LED (2) flashes.
- Briefly press the button (2) on the receiver.
- The blue LED (2) will remain lit for 60 sec. by which the programming operation must be completed, holding down for more than 5 sec. the power button (3) on the transmitter (1). The blue LED (2) turns off confirming the correct programming of the system.
- It is possible to control multiple receivers with a single transmitter, programming them as indicated in fig.5

OPERATION (fig. 6):

- Key 3 = ON/OFF
- Key 4 = Increase the brightness
- Key 5 = Decrease the brightness
- Switch 6 = Light colour temperature adjustment

RECEIVER PROGRAMMING RESET (fig.7):

It is possible to cancel the programming of the transmitters paired with the receiver proceeding as follows:

- Press button (2) briefly, the blue LED flashes once.
- Press button (2) in quick succession three times; the LED flashes twice; at this point the receiver is completely reset.

WARNING:

After 60 sec. of inactivity, the control system goes in “STAND-BY” mode, during which it is not possible to make any adjustments until one of the buttons on the transmitter (1) is pressed.

BATTERY-POWERED DEVICES:

Dispose of batteries according to local regulations. Some batteries can be recycled and it can be possible to dispose of them at the local recycling center. If it is not possible to find the applicable regulations in your area, check the instructions of the battery manufacturer.

IMPORTANT:

The installation must be performed by qualified personnel following the instructions attached and those in fig.3

WARRANTY

The warranty on the device is valid only if powered by a power supply provided by DOMUS Line. The warranty general terms and conditions for this device are available at www.domusline.com

INSTALLATION MANUAL

This device complies with part 15 of the FCC Rules. Operation is subject to the following two conditions: (1) This device may not cause harmful interference, and (2) this device must accept any interference received, including interference that may cause undesired operation.

FCC warning:

Any Changes or modifications not expressly approved by the party responsible for compliance could void the user’s authority to operate the equipment.
Note: This equipment has been tested and found to comply with the limits for a Class B digital device, pursuant to part 15 of the FCC Rules. These limits are designed to provide reasonable protection against harmful interference in a residential installation. This equipment generates uses and can radiate radio frequency energy and, if not installed and used in accordance with the instructions, may cause harmful interference to radio communications. However, there is no guarantee that interference will not occur in a particular installation. If this equipment does cause harmful interference to radio or television reception, which can be determined by turning the equipment off and on, the user is encouraged to try to correct the interference by one or more of the following measures:

- Reorient or relocate the receiving antenna.
- Increase the separation between the equipment and receiver.
- Connect the equipment into an outlet on a circuit different from that to which the receiver is connected.
- Consult the dealer or an experienced radio/TV technician for help.

IC warning

This device complies with Industry Canada licence-exempt RSS standard(s).
Operation is subject to the following two conditions: (1) This device may not cause interference, and (2) This device must accept any interference, including interference that may cause undesired operation of the device.
The device has been evaluated to meet general RF exposure requirements. The device can be used in portable exposure condition without restriction.
This equipment complies with FCC radiation exposure limits set forth for an uncontrolled environment. This equipment should be installed and operated with a minimum distance of 20cm between the radiator & your body.

Documents / Resources

	DOMUS LINE RC1 Receiver Controller TWF [pdf] Instruction Manual CONTROL3, 2AX76-CONTROL3, 2AX76CONTROL3, RC1 Receiver Controller TWF, Receiver Controller TWF, Controller TWF
---	---