



DOMO DO9236J Juice extractor Instruction Manual

[Home](#) » [DOMO](#) » DOMO DO9236J Juice extractor Instruction Manual 

DOMO DO9236J Juice extractor



Contents

- [1 WARRANTY](#)
- [2 SAFETY INSTRUCTIONS](#)
- [3 PARTS](#)
- [4 BEFORE THE FIRST USE](#)
- [5 USE](#)
 - [5.1 TIPS](#)
- [6 CLEANING AND MAINTENANCE](#)
- [7 ENVIRONMENTAL GUIDELINES](#)
- [8 Documents / Resources](#)
 - [8.1 References](#)
- [9 Related Posts](#)

WARRANTY

Dear client ,

All of our products are always submitted to a strict quality control before they are sold to you.

Should you nevertheless experience problems with your device, we sincerely regret this.
In that case, we kindly request you to contact our customer service. Our staff will gladly assist you.



+32 14 21 71 91



info@linea2000.be

Monday – Thursday: 8.30 – 12.00 and 13.00 – 17.00

Friday: 8.30 – 12.00 and 13.00 – 16.30

This appliance has a two year warranty period. During this period the manufacturer is responsible for any failures that are the direct result of construction failure. When these failures occur the appliance will be repaired or replaced if necessary. The warranty will not be valid when the damage to the appliance is caused by wrong use, not following the instructions or repairs executed by a third party. The guarantee is issued with the original till receipt. All parts, which are subject to wear, are excluded from the warranty.

If your device breaks down within the 2-year warranty period, you can return the device together with your receipt to the shop where you purchased it. The guarantee on accessories and components that are liable to wear-and-tear is only 6 months.

The guarantee and responsibility of the supplier and manufacturer lapse automatically in the following cases:

- If the instructions in this manual have not been followed.
- In case of incorrect connection, e.g., electrical voltage that is too high.
- In case of incorrect, rough or abnormal use.
- In case of insufficient or incorrect maintenance.
- In case of repairs or alterations to the device by the consumer or non authorised third parties.
- If the customer used parts or accessories that are not recommended or provided by the supplier / manufacturer.

SAFETY INSTRUCTIONS

- Read all instructions carefully. Keep this manual for future reference.
- Make sure all packaging materials and promotional stickers have been removed before using the appliance for the first time. Make sure children cannot play with the packaging materials.
- This appliance is intended to be used in household and similar applications such as:
 - staff kitchen areas in shops, offices and other working environments;
 - farm houses;
 - by clients in hotels, motels and other residential type environments;
 - bed and breakfast type environments.
- Children should be supervised to ensure that they do not play with the appliance
- This appliance can be used by children aged from 16 years and above and persons with reduced physical, sensory or mental capabilities or lack of experience and knowledge if they have been given supervision or instruction concerning use of the appliance in a safe way and understand the hazards involved. Children shall not play with the appliance. Cleaning and user maintenance shall not be made by children unless they are older than 16 and supervised.
- Keep the appliance and its cord out of reach of children younger than 16 years.
- Attention: This appliance cannot be used with an external timer or a separate remote control.
- Read all instructions before use.
- Before use, check if the voltage stated on the appliance corresponds with the voltage of the power net at your home.
- Do not let the cord hang on a hot surface or on the edge of a table or counter top.
- Never use the appliance when the cord or plug is damaged, after malfunction or when the appliance itself is damaged. In that case, take the appliance to the nearest qualified service center for check-up and repair.
- Close supervision is necessary when the appliance is used near or by children.
- The use of accessories that are not recommended or sold by the manufacturer can cause fire, electrical shock or injuries.

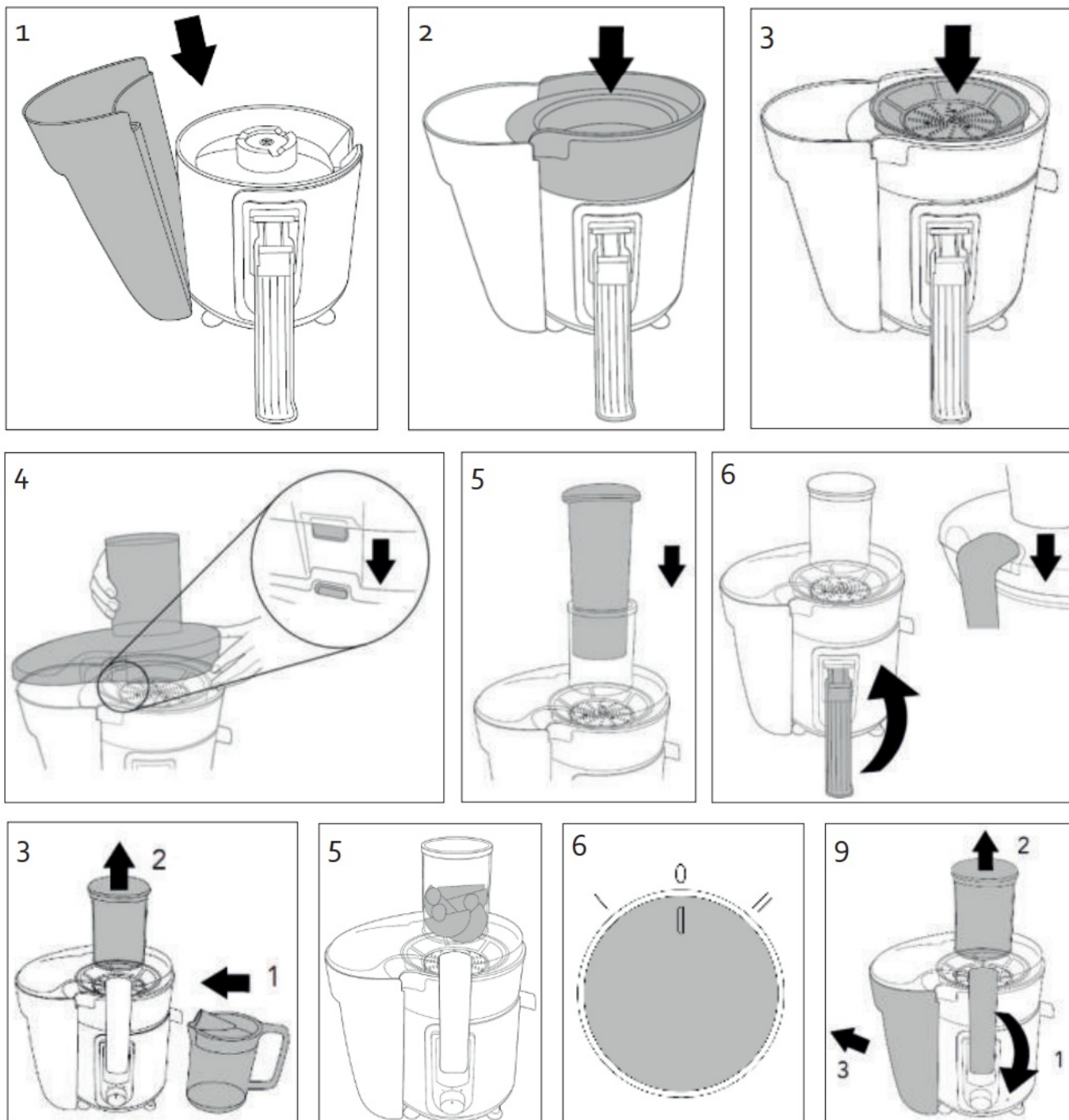
- Unplug the appliance when it is not in use, before assembling or disassembling any parts and before cleaning the appliance. Put all buttons and knobs into the 'off' position and unplug the appliance by grasping the plug. Never unplug by pulling the cord.
- Do not leave a working appliance unattended.
- Never place this appliance near a gas stove or electrical stove or in a place where it may come into contact with a warm appliance.
- Do not use the appliance outdoors.
- Only use the appliance for its intended use.
- Always use the appliance on a steady, dry and level surface.
- Only use the appliance for domestic use. The manufacturer can not be held responsible for accidents that result from improper use of the appliance or not following the instructions described in this manual.
- All repairs should be carried out by the manufacturer or its aftersales service.
- Never immerse the appliance, the cord or the plug in water or any other liquid.
- Make sure that children do not touch the cord or appliance.
- Keep the cord away from sharp edges and hot parts or other heat sources.
- .
- A short power supply cord is provided to reduce the risk of becoming entangled in or tripping over a longer cord. DO NOT USE WITH AN EXTENSION CORD.
- Unwrap the cord completely to prevent overheating of the cord.
- Check the safety interlock.
- Do not operate the juicer for more than 5 min at a time and let it cool down sufficiently between 2 uses.
- Never put your fingers in the feed tube when the appliance is switched on. Use only the food pusher.
- Release the interlock when the appliance is switched off and the filter has stopped rotating.

PARTS



1. Food pusher
2. Lid with fill opening
3. Sieve
4. Drip tray with juice dispenser
5. x

6. Container for leftovers
7. Control button
8. Base
9. Measuring cup



BEFORE THE FIRST USE

- Clean the removable parts with warm water.
- Always completely unwind the electrical cable when in use.
- Make sure all packaging materials and promotional stickers have been removed before using the appliance for the first time. Make sure children cannot play with the packaging materials.

USE

10. Clean the parts immediately after use.

TIPS

- Use fresh vegetables and fruit, they contain more juice.
- Fruit that contains starch such as bananas, avocados, figs and mangos are not suitable for juicing.
- Drink the juice immediately after you have extracted it. If it is exposed too long to the air, the juice will lose its taste and nutritional value.
- To keep your apple juice from turning brown, simply add a few drops of lemon juice.

CLEANING AND MAINTENANCE

- Unplug the appliance when it is not in use, before assembling or disassembling any parts and before cleaning the appliance.
- When the pulp dries up it will be much harder to remove. Therefore, clean the removable parts with a mild detergent in warm water immediately after use.
- Wipe the base and electrical cable with a soft and slightly damp cloth. Never immerse them in water or any other liquid.
- Never use aggressive or abrasive cleaning agents.
- Store the appliance in a dry, dust-free place out of direct sunlight.

ENVIRONMENTAL GUIDELINES



This symbol on the product or on its packaging indicates that this product may not be treated as household waste. Instead it must be brought to the applicable collection point for recycling of electrical and electronic equipment. By ensuring this product is disposed of correctly, you will help prevent potential negative consequences for the environment and human health, which could otherwise be caused by inappropriate waste handling of this product. For more detailed information about recycling of this product, please contact your local city office, your household waste disposal service or the shop where you purchased the product



The packaging is recyclable. Please treat the packaging ecologically.

BESTEL de originele
Domo-accessoires en -onderdelen online via:
webshop.domo-elektro.be



of scan hier:

ou scannez ici:

oder hier scannen:


or scan here:



LINEA 2000 BV – Dompel 9 – 2200 Herentals – Belgium – Tel: +32 14 21 71 91 – Fax: +32 14 21 54 63

DOMO

Documents / Resources

 <p>DOMO</p> <p>DO9236J</p> <p>Availability: _____</p> <p>Lead time: _____</p> <p>Minimum order: _____</p> <p>Maximum order: _____</p> <p>Product type: _____</p> <p>Manufacturer: LINEA</p>	<p>DOMO DO9236J Juice extractor [pdf] Instruction Manual</p> <p>DO9236J Juice extractor, DO9236J, Juice extractor, extractor</p>
--	--

References

- www.ELEKTROKOLA.cz - Crussis, Ghost, Kellys, Leader Fox, Pells, Specialized - **doprava zdarma**