

DOMO DO718K Fully Automatic Espresso Machine



DOMO DO718K Fully Automatic Espresso Machine Instruction Manual

[Home](#) » [DOMO](#) » DOMO DO718K Fully Automatic Espresso Machine Instruction Manual 

Contents

- [1 DOMO DO718K Fully Automatic Espresso Machine](#)
- [2 Product Usage Instructions](#)
- [3 WARRANTY](#)
- [4 SAFETY INSTRUCTIONS](#)
- [5 PARTS](#)
- [6 CONTROL PANEL](#)
- [7 INSTALLATION](#)
- [8 CLEANING AND MAINTENANCE](#)
- [9 POSSIBLE PROBLEMS](#)
- [10 Documents / Resources](#)
 - [10.1 References](#)
- [11 Related Posts](#)



DOMO DO718K Fully Automatic Espresso Machine



Specifications

- **Model:** DO718K
- **Type:** Fully automatic espresso machine
- **Warranty:** 2 years from the date of purchase
- **Accessories warranty:** 6 months

Product Usage Instructions

Safety Precautions

Always allow the machine to cool down before moving it.

Parts

Drain tray

- Tray grid
- Drip tray

Control Panel

Detailed description of the icons and buttons on the control panel.

Installation

1. Remove all packaging materials and stickers before first use.
2. Place the machine on a flat, stable surface with ample ventilation space around it.
3. For initial use, it is recommended to flush the pipes by making a cup of hot water. Refer to the usage section for details.

Usage

1. Turn on the machine by pressing the power button. The machine will automatically flush, dispensing hot water.

It will then enter standby mode with all indicator lights on, indicating readiness for use.

2. Place a cup under the coffee outlet. Adjust the height of the outlet as needed.

FAQ (Frequently Asked Questions)

1. Q: What should I do if the coffee grounds container is full?

A: Empty the coffee grounds container and ensure it is properly placed back into the machine.

2. Q: How do I know when to descale the machine?

A: The descaling indicator light will illuminate when it's time to descale. Follow the instructions in the manual for descaling.

WARRANTY

- Dear client ,
- All of our products are always submitted to a strict quality control before they are sold to you. Should you nevertheless experience problems with your device, we sincerely regret this.
- In that case, we kindly request you to contact our customer service.
- Our staff will gladly assist you.
 - +32 14 21 71 91
 - info@linea2000.be

Monday – Thursday

Friday: 8.30 – 12.00 and 13.00 – 16.30

- This appliance has a two year warranty period. During this period the manufacturer is responsible for any failures that are the direct result of construction failure. When these failures occur the appliance will be repaired or replaced if necessary. The warranty will not be valid when the damage to the appliance is caused by wrong use, not following the instructions or repairs executed by a third party. The guarantee is issued with the original till receipt. All parts, which are subject to wear, are excluded from the warranty. If your device breaks down within the 2-year warranty period, you can return the device together with your receipt to the shop where you purchased it.
- The guarantee on accessories and components that are liable to wear-and-tear is only 6 months.
- The guarantee and responsibility of the supplier and manufacturer lapse automatically in the following cases:
 - If the instructions in this manual have not been followed.
 - In case of incorrect connection, e.g. electrical voltage that is too high.
 - In case of incorrect, rough or abnormal use.
 - In case of insufficient or incorrect maintenance.
 - In case of repairs or alterations to the device by the consumer or non-authorised third parties.
 - If the customer used parts or accessories that are not recommended or provided by the supplier / manufacturer.

SAFETY INSTRUCTIONS

When using electrical appliances, basic safety precautions should always be taken, including the following:

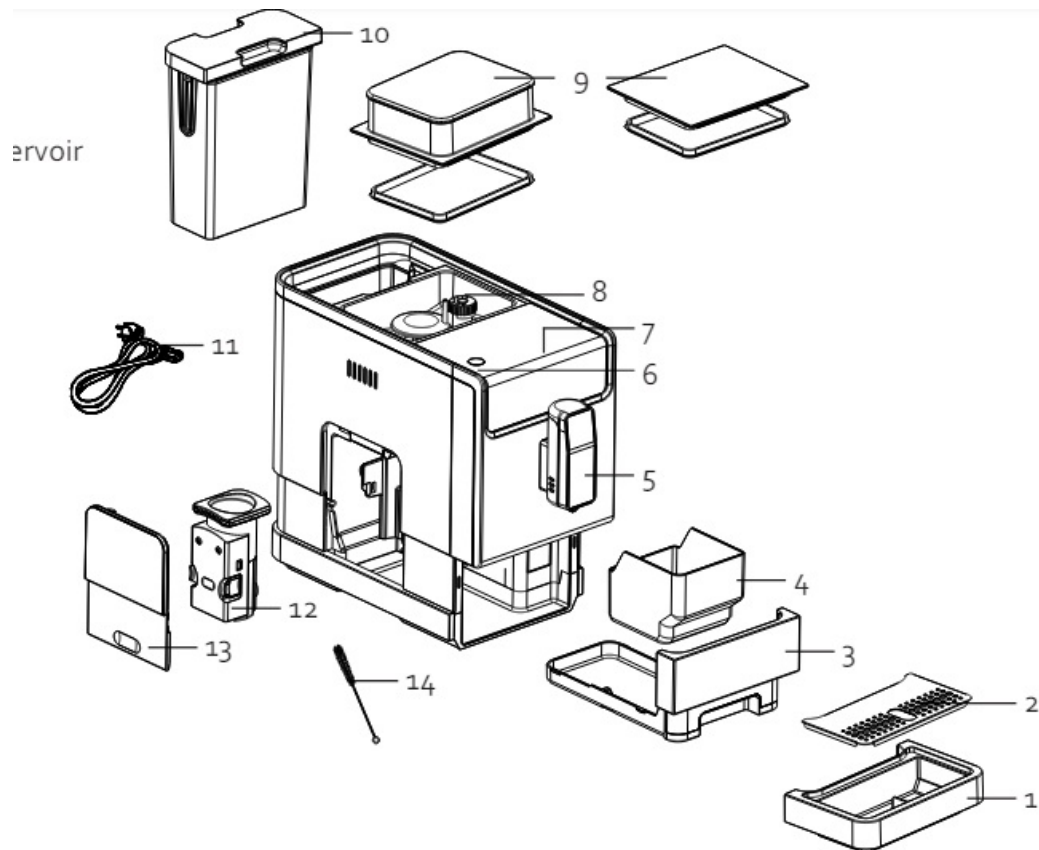
- Read all instructions carefully. Keep this manual for future reference.

- Make sure all packaging materials and promotional stickers have been removed before using the appliance for the first time. Make sure children cannot play with the packaging materials.
- This appliance is intended to be used in household and similar applications such as: staff kitchen areas in shops, offices and other working environments; farm houses; by clients in hotels, motels and other residential type environments; bed and breakfast type environments.
- Children should be supervised to ensure that they do not play with the appliance.
- This appliance can be used by children aged from 16 years and above and persons with reduced physical, sensory or mental capabilities or lack of experience and knowledge if they have been given supervision or instruction concerning use of the appliance in a safe way and understand the hazards involved. Children shall not play with the appliance. Cleaning and user maintenance shall not be made by children unless they are older than 16 and supervised.
- Keep the appliance and its cord out of reach of children younger than 16 years.
- The appliance must be disconnected from its power source when not in use, during service and when replacing parts. Allow to cool before putting on or taking off parts, and before cleaning the appliance.
- **CAUTION:** In order to avoid a hazard this appliance must not be supplied through an external switching device, such as a timer, or connected to a circuit that is regularly switched on and off by the utility.
- The surfaces of the appliance are likely to get hot during use. It is advised not to touch the surfaces of the appliance other than the handles to avoid burns.
- Never leave the appliance unattended while it is functioning.
- Do not use or store this appliance outdoors.
- Do not use this appliance for other than intended use.
- Check carefully that the voltage and frequency of the power net match the indications on the rating label of the appliance.
- The plug must be plugged into an appropriate outlet that is installed and grounded in accordance with all local standards and requirements.
- Do not operate this appliance with a damaged cord or plug or in the event the appliance malfunctions or has been damaged in any manner. Return the appliance to the DOMO Service Department or its service agent for examination, repair, or electrical or mechanical adjustment. Do not try to repair the appliance yourself.
- To protect against electrical shock or burns, do not immerse unit, cord, or plug in water or other liquid. Do not operate the appliance with wet hands.
- A short power supply cord is provided to reduce the risk of becoming entangled in or tripping over a longer cord. **DO NOT USE WITH AN EXTENSION CORD.**
- Unwrap the cord completely to prevent overheating of the cord.
- Do not let the power supply cord hang over the edge of a counter, or touch hot surfaces.
- Do not allow the power cord supply to run underneath or around the unit.
- Do not place on or near a hot gas or electric burner or sink, or in a heated oven.
- Do not place near flammable materials, gases or explosives.
- Make sure the appliance is correctly assembled, then plug the cord in the wall outlet. To disconnect, turn controls to "OFF" or "0" position, then remove the plug from the wall. Never pull the cord or appliance to remove the plug from the socket.
- Failure to maintain this appliance in a clean condition could adversely affect the life of the appliance and possibly result in a hazardous situation.
- During boiling, hot steam may come through the filter or any other opening. Keep hands and face at a safe

distance during operation.

- Any injury or damage caused by failure to comply with these rules are at your own risk. Neither the manufacturer, importer, or the supplier may be held liable.
- Do not overfill the kettle. Never add water above the maximum level marked on the appliance.
- Do not spill any liquid on the connector.
- Only use the utensils delivered with the appliance.
- Do not move the appliance while in use or when still hot. Allow to cool before moving the appliance.

PARTS



1. Drip tray
2. Drip tray grid
3. Drip pan
4. Coffee grounds reservoir
5. Coffee spout
6. On/off button
7. Control panel
8. Bean reservoir
9. Bean reservoir lid
10. Water reservoir
11. Cord
12. Brewing unit
13. Maintenance door
14. Cleaning brush

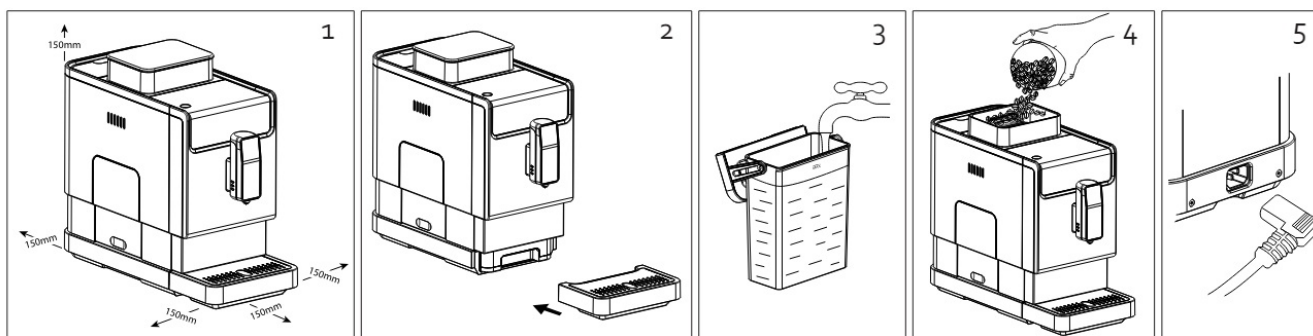
CONTROL PANEL

Icon	Description
Keys	
	Espresso (small, strong coffee)
	Lungo (normal, mild coffee)
	Americano (coffee diluted with water)
	Favourite setting
	Hot water
	Indicator light on: preparation ready Indicator light flashing: preparation in progress
	Water tank empty or not installed
	Bean reservoir empty
	Indicator light on: coffee grounds reservoir full Indicator light flashing: drip pan not installed
	Indicator light on: brewing unit not inserted (correctly) Indicator light flashing: maintenance door is not installed (correctly)
	Indicator light on: descale the appliance Indicator light flashing: descaling process in progress
	The process for emptying the appliance is in progress. See "cleaning and maintenance/emptying the appliance" section

INSTALLATION

Remove all packaging materials and any promotional stickers before using the appliance for the first time.

1. Place the appliance on a flat, stable surface. Provide adequate space around the appliance for ventilation.
2. Put the drip tray in place. Make sure this is correctly installed.
3. Fill the water reservoir. See "use/filling the water tank" section.
4. Fill the bean reservoir. See "use/filling the bean reservoir" section.
5. Plug the electrical cable into the cable connector on the appliance. Plug the plug into an electrical socket.



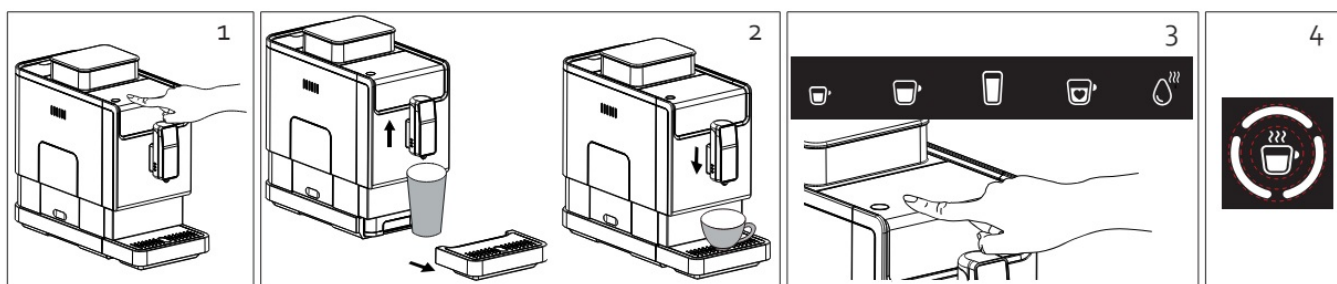
Before the first use, it is recommended that a cup of hot water is made first in order to rinse out the pipes. See “use” section.

USE

1. Turn the appliance on. Press the on/off button. The appliance will rinse automatically. A cup of hot water will come out of the spout. The appliance then goes into standby mode. In standby mode, all indicator lights are on and the appliance is ready for use.

Note: automatic rinsing will only occur if the appliance has been turned off for an extended period of time.

2. Place a cup under the coffee spout. You can adjust the height of the spout to the height of your cup by lifting it up or down. For a small cup, use the drip tray. If you use a larger cup, you can remove the drip tray.
 3. Choose your desired coffee and press the key for an espresso, lungo, americano, hot water or your favourite setting.
- Note:** you can set the amount of coffee yourself using the keys. See “adjust volume” and “favourite setting” sections.
4. The indicator light for the selected key lights up, the in preparation indicator light appears on the display, and the cup illumination lights up. If you want to finish the preparation process before the coffee is ready, press the selected key again.
 5. When the coffee is ready, the appliance returns to standby mode. The appliance has an automatic switch-off. Depending on the mode selected, the appliance will turn off after 10, 20 or 30 minutes.



FILLING THE WATER TANK



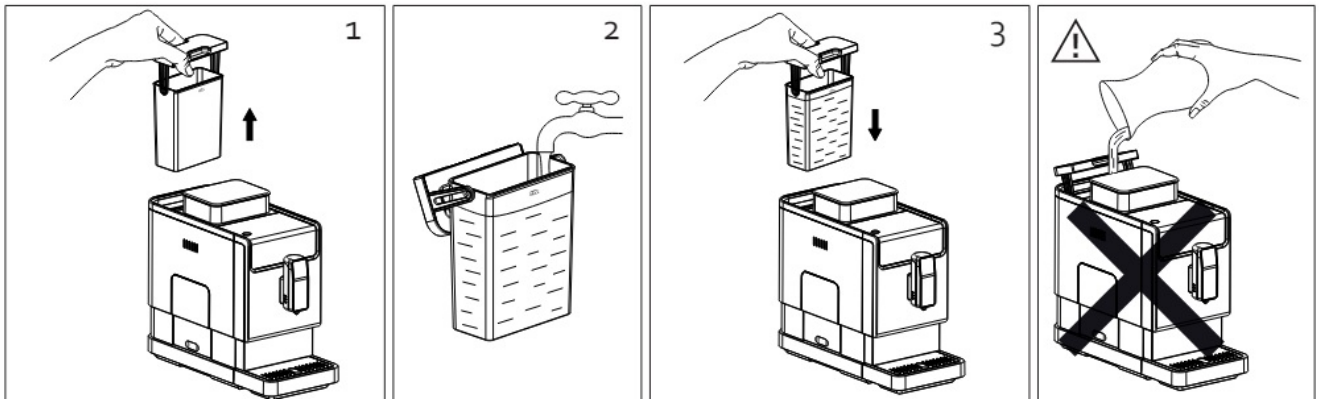
If the water tank empty indicator light flashes, you must fill the water tank.

1. Remove the water tank from the appliance. You can use the lid of the tank as a handle to do this.
2. Rinse the tank out and fill it with clean, cold water up to the maximum mark.
3. Put the tank back in the appliance.

Attention: always take the water tank out of the appliance when you fill it with water to prevent overflow and

damage.

Never use warm, hot or sparkling water, or any other liquid in the water tank.



FILLING THE BEAN RESERVOIR

You can choose to place the lid directly on the reservoir, or use the accessory for the bean reservoir.

If the bean reservoir empty indicator light flashes, you must fill the bean reservoir.

1. Remove the reservoir lid. If desired, put the accessory in place to raise the bean reservoir.
2. Add the beans by slowly pouring them into the reservoir.
3. Place the lid back.

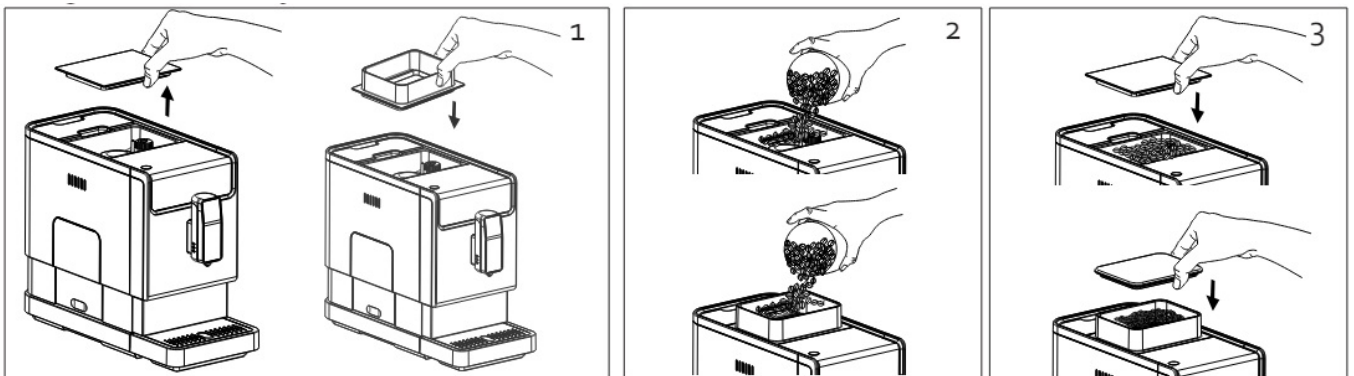
Only use coffee beans in the bean reservoir. Never fill the reservoir with ground coffee, instant coffee, or other ingredients or objects.



If the bean reservoir empty indicator light flashes, you must fill the bean reservoir.

1. Remove the reservoir lid. If desired, put the accessory in place to raise the bean reservoir.
2. Add the beans by slowly pouring them into the reservoir.
3. Place the lid back.

Only use coffee beans in the bean reservoir. Never fill the reservoir with ground coffee, instant coffee, or other ingredients or objects.



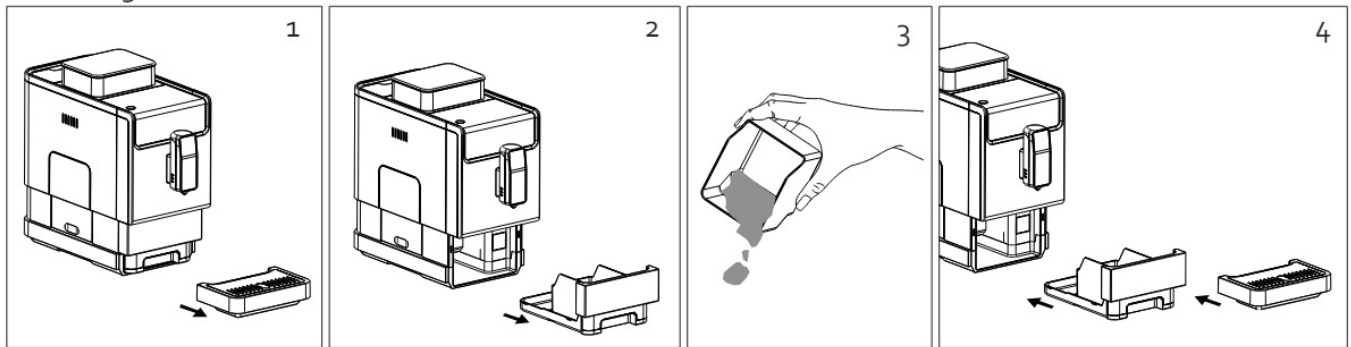
EMPTYING THE COFFEE GROUNDS RESERVOIR

If the coffee grounds reservoir indicator light is on, you must empty the coffee grounds reservoir.

1. Remove the drip tray.

2. Remove the drip pan from the appliance.
3. Empty the coffee grounds reservoir. Rinse and dry both the drip pan and the coffee grounds reservoir.
4. Return everything to its original position.

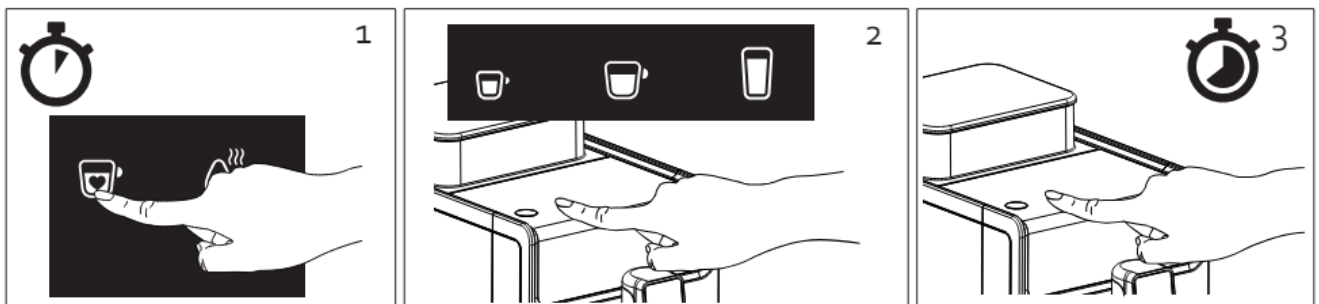
The 'coffee grounds reservoir full' indicator lamp flashes if the reservoir has been removed for some time. Only then should you replace the reservoir. If you replace the coffee grounds reservoir too early, the indicator light will remain on.



FAVOURITE SETTING

You can programme the favourite setting key to your own preference.

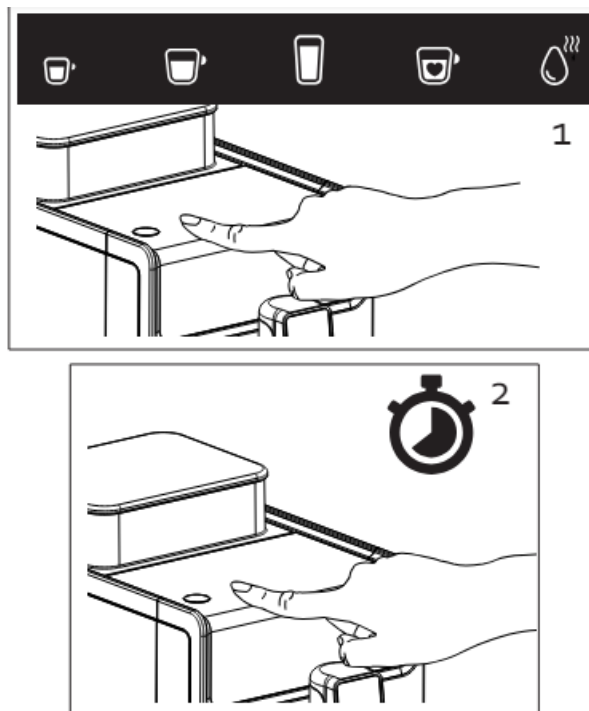
1. Press and hold the favourite setting key for 2 seconds. The espresso, lungo and americano key indicators will flash.
2. Press the key for the type of coffee you want to programme as your favourite setting.
3. The preparation will start. Press the key for the type of coffee you are now programming again. Keep the key pressed for as long as you want the coffee to continue to flow. When you release the key, the preparation will stop. The appliance remembers the volume from the time you release your key.
4. The favourite setting key is now programmed.



ADJUST VOLUME

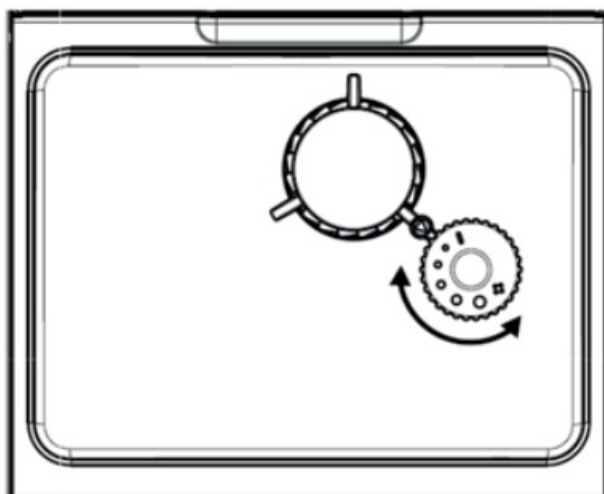
You can adjust the amount of the espresso, lungo, americano and hot water keys from between 25 ml and 250 ml.

1. Press the key that you want to adjust the volume for.
2. The preparation starts. Press the key for the type of coffee you are now programming again. Keep the key pressed for as long as you want the coffee to continue to flow.
3. When the preparation has reached the desired amount, release the key. You will hear a double beep – this means the amount has been set as the new volume of that key.



GRINDING SETTING




There is a rotary button in the bean reservoir to adjust the coarseness of the grind. During operation, turn the button to achieve a coarser or finer grind of the beans. ! Caution: Do not turn this button when the appliance is not in operation, this may damage the grinder if there are beans in the mechanism. There are dots on the rotary button to indicate the coarseness. The smaller the dot, the finer the grind setting.



MODE SELECTION




The espresso machine has 3 settings: standard, eco and fast. In eco mode, you save energy; in fast mode, you make your coffee even faster.

	Eco mode	Fast mode	Standard mode
Cup lighting	No	Yes	Yes
Pre-brewing*	Yes	No	Yes
Automatic switch-off	10 min	30 min	20 min
Volume memory	Yes	Yes	Yes

	Hot water 	Espresso 	Lungo 
Eco mode	X		
Fast mode		X	
Standard mode			X

For pre-brewing, the ground beans are moistened in the brewing unit with a small amount of water before brewing. This ensures the ground coffee expands, which increases the pressure to optimise the full aroma and extraction of oil.

1. If the appliance is in standby mode, press the on/off button for 5 seconds. You will hear a double beep.
2. The keys for the different types of coffee now each represent a different setting. The lit key indicates the current setting. The other keys will flash.

	Hot water 	Espresso 	Lungo 
Eco mode	X		
Fast mode		X	
Standard mode			X

You can now also change the setting by pressing one of the flashing keys. Choose the hot water key for eco mode, the espresso key for fast mode and the lungo key for standard mode. You will hear a double beep if the setting is adjusted.

If you want to keep the current setting, press the on/off button again and wait 5 seconds. The appliance returns to standby mode.

CLEANING AND MAINTENANCE

CLEANING

- It is recommended that steps 1-4 are carried out daily. Once the appliance has been used for an extended period of time, coffee residue may build up in the appliance; in this case, clean the appliance according to step 5.

Turn the appliance off and remove the plug from the socket.

Remove the drip tray. Empty the tray. Clean both the grid and the tray with clean water. Dry both thoroughly.

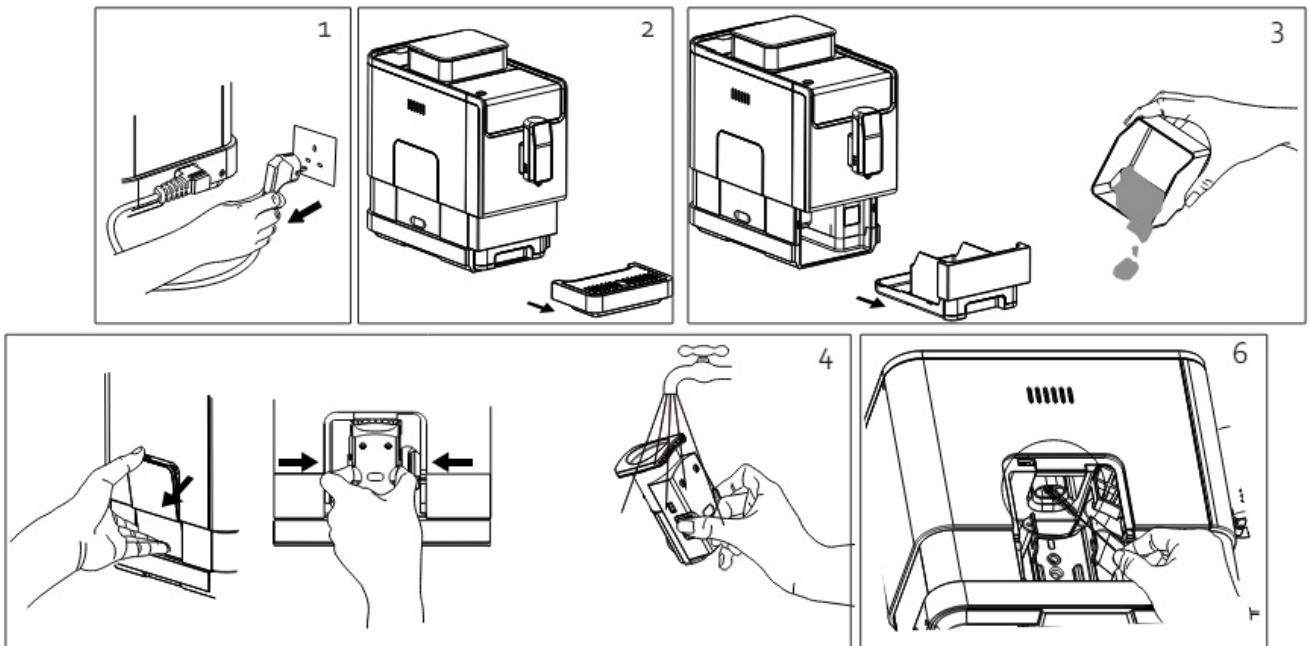
They can also be cleaned in the dishwasher.

1. Remove the drip pan from the appliance. Empty the coffee grounds reservoir. Clean both the drip pan and the coffee grounds reservoir with clean water. Dry both thoroughly. They can also be cleaned in the dishwasher.

2. Open the maintenance door. Remove the brewing unit by pressing both buttons on the side of the brewing unit and pulling it towards you. Clean and dry the brewing unit with clean water.

Attention: never clean the brewing unit in the dishwasher.

3. Clean the housing with a clean, damp cloth. Use the supplied cleaning cloth to wipe the touch panel.
 4. Use the cleaning brush to clean the coffee residue from around the internal outlet of the coffee mill.
 5. Return everything to its original position. If a part is not (properly) installed, the appliance will indicate this on the display. See “parts” section for an explanation of the indicator lights.
- Never immerse the appliance, power cord or plug in water or any other liquid. This is to prevent electric shock or fire.
6. Never use an aggressive or abrasive cleaning agent.

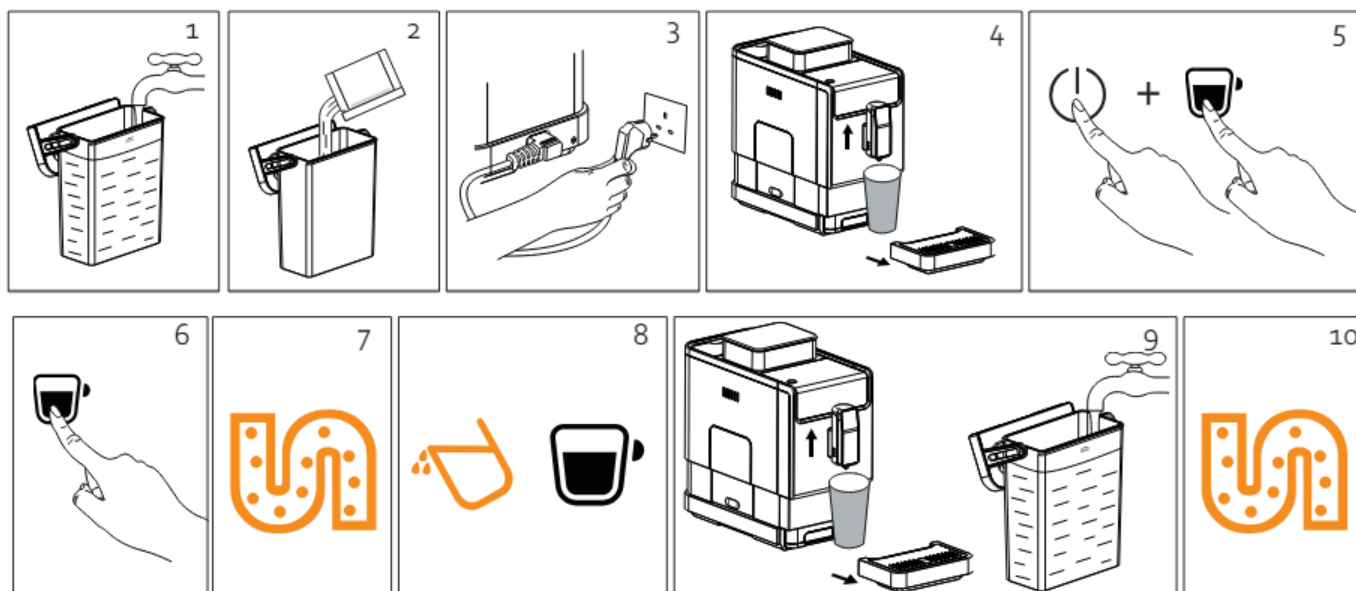


If the “descale the appliance” indicator light is on, you must descale the appliance.

1. Fill the water tank up to the maximum indication.
2. Add 1 sachet of descaling solution to the water tank. 3 bags are supplied with the appliance. Additional descaling product can be obtained from the website: www.webshop.domo-elektro.be
3. Plug the power cord into a socket.
4. Place a collection reservoir under the coffee spout. Make sure the reservoir has the same capacity as the water tank.
5. Switch on the appliance with the on/off button. Wait until the appliance has been heated and rinsed, and the appliance is in standby mode (all keys lit in white).
6. Press and hold the on/off button and espresso key (small cup) simultaneously for 5 seconds. You will hear a beep and the ‘descale the appliance’ and espresso lights will flash.
7. Press the espresso key to confirm the descaling process. If you do not want to carry out the descaling operation, press the on/off button to return to hibernation mode.
8. The descaling process indicator light flashes and the appliance will start descaling. The water with descaling product comes out of the spout in phases. The whole process takes a few minutes (± 20 min.).
9. Then all the water in the water tank has run through the appliance, the water tank empty and espresso indicator

lights will flash.

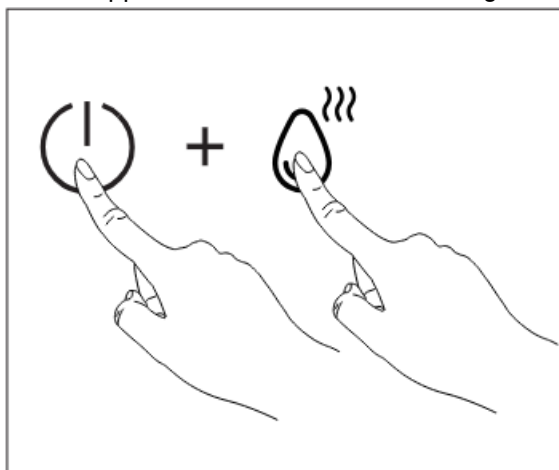
10. Empty the collection reservoir and put it back in place. If there are any residues in the water tank, first empty the tank and rinse. Fill the tank with clean water up to the maximum indication and place it back in the appliance.
11. The descaling process resumes. The appliance will run half of the water in the tank, pause for 1 minute and then run the other half of the water through.
12. The descaling process has now ended and the appliance will turn off.



- Attention: the water that comes out of the coffee spout is extremely hot, so keep your hands away from the appliance when it is in operation.
- Only use the descaling products supplied with the appliance. Other descaling products, aggressive cleaning agents or vinegar can damage the appliance.
- If the appliance is not properly maintained, this can drastically reduce the service life of the appliance.

MANUAL RINSE

You can manually rinse the appliance to clean the coffee spout. It is recommended that this be done regularly if the appliance is used frequently or if the appliance has been idle for a long time.



1. It is recommended to place an empty cup or collection reservoir under the coffee spout.
2. In standby mode, press and hold the on/off button and hot water key simultaneously for 5 seconds.
3. The hot water indicator light flashes. Hot water comes out of the coffee outlet.

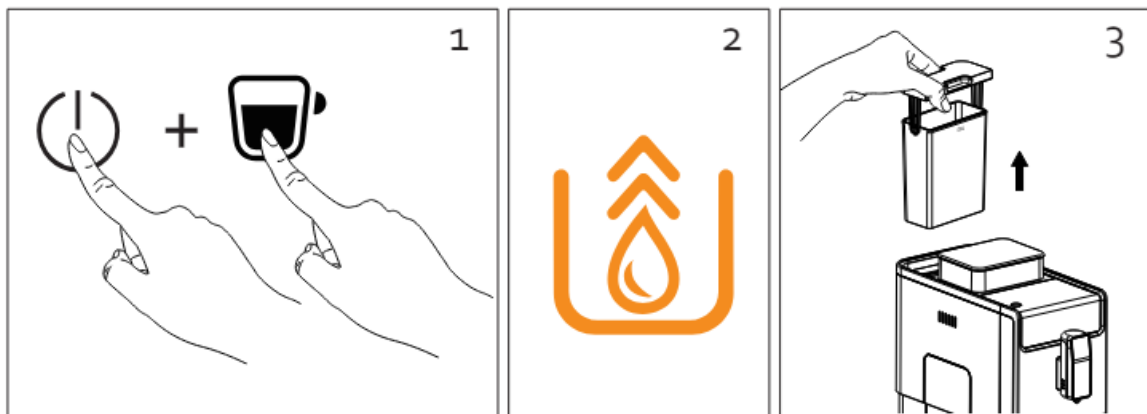
4. When the spout has been rinsed, the appliance returns to standby mode.

EMPTYING THE APPLIANCE

If you want to store or transport the appliance, it is best to empty it completely to ensure there is no water in the pipes.

1. In standby mode, press and hold the on/off button and lungo key simultaneously for 5 seconds.
2. The empty appliance indicator light flashes on the display. If you do not want to continue with the appliance emptying function, press the on/off button again to return to standby mode.
3. Remove the water tank. The appliance empty indicator light will go on. Empty the water tank and the drip tray.
4. When the programme is finished, the appliance will automatically turn off.

If you want to use the appliance again afterwards, first make a cup of hot water.



POSSIBLE PROBLEMS

Problem	Cause	Solution
The appliance is not working.	The appliance is not connected to the electricity.	Make sure the electrical cable is properly connected and that the plug is plugged in.
No or late response when pressing the keys on the control panel.	<ul style="list-style-type: none"> The appliance is electro- magnetically restricted. The control panel is dirty. 	<ul style="list-style-type: none"> Remove the plug from the socket and try again a few minutes later. Clean the control panel with the supplied cleaning cloth.
The coffee is not warm enough.	<ul style="list-style-type: none"> The cups have not been pre- heated. The brewing unit is still cold. 	<ul style="list-style-type: none"> Heat the cups. Rinse the appliance 3 times to heat the brewing unit.
Coffee does not come out of the spout.	It may be that the appliance emptying function was the last used setting.	Press the hot water key so hot water comes out of the spout.
The first cup of coffee is of poor quality.	The first grinding session does not provide enough ground coffee.	Drain the coffee. The following coffees are good quality.
The coffee has does not have a creamy layer.	The coffee beans are not fresh.	Replace the coffee beans.
The control panel keys are not sensitive.	The touch keys must be operated from the front.	Touch the keys from the front on the lower part of the icons of the keys.
It takes a long time for the appliance to heat up.	Lime has accumulated in the appliance.	Descale the appliance.
Despite the water tank being empty /not installed, the indicator light does not come on.	The sensor, near the water tank connector, is wet.	Wipe off the water around the water tank connection.

There is a lot of water in the coffee grounds reservoir.	The ground coffee is too fine and is blocking the water outlet.	Adjust the coarseness with the rotary button in the bean reservoir during operation.
The coffee flows very slowly/ drips from the coffee spout.	The ground coffee is too fine and is blocking the water outlet.	Adjust the coarseness with the rotary button in the bean reservoir during operation.
The bean reservoir indicator light flashes empty while there are still enough beans in the reservoir.	The internal outlet of ground coffee is blocked.	Use the cleaning brush to clean the coffee residue from around the internal outlet of the coffee mill.
The descaling indicator light flashes.	The descaling process is still in progress.	Follow the descaling process steps, the complete process is only complete when the appliance returns to standby mode.

ENVIRONMENTAL GUIDELINES

- This symbol on the product or on its packaging indicates that this product may not be treated as household waste. Instead it must be brought to the applicable collection point for recycling of electrical and electronic equipment. By ensuring this product is disposed of correctly, you will help prevent potential negative consequences for the environment and human health, which could otherwise be caused by inappropriate waste handling of this product. For more detailed information about recycling of this product, please contact your local city office, your household waste disposal service or the shop where you purchased the product.



- The packaging is recyclable. Please treat the packaging ecologically.



• Webshop

- ORDER




- the original Domo accessories and parts online at: webshop.domo-elektro.be

- or scan here:



LINEA 2000 BV – Dompel 9 – 2200 Herentals – Belgium – Tel: +32 14 21 71 91 – Fax: +32 14 21 54 63

Documents / Resources

 <p>DOMO</p> <p>DO718K</p> <p>Model: DO718K</p> <p>Capacity: 1.2L</p> <p>Power: 1200W</p> <p>Material: Stainless Steel</p> <p>Color: Silver</p> <p>Weight: 3.5kg</p> <p>Dimensions: 250x250x350mm</p> <p>CE mark</p> <p>PROTECTOR LINEA</p>	<p>DOMO DO718K Fully Automatic Espresso Machine [pdf] Instruction Manual</p> <p>DO718K, DO718K Fully Automatic Espresso Machine, Fully Automatic Espresso Machine, Automatic Espresso Machine, Espresso Machine, Machine</p>
--	--

References

- [DOMO | Home](#)
- [www.ELEKTROKOLA.cz - Crussis, Ghost, Kellys, Leader Fox, Pells, Specialized - doprava zdarma](#)
- [User Manual](#)

Manuals+, Privacy Policy

This website is an independent publication and is neither affiliated with nor endorsed by any of the trademark owners. The "Bluetooth®" word mark and logos are registered trademarks owned by Bluetooth SIG, Inc. The "Wi-Fi®" word mark and logos are registered trademarks owned by the Wi-Fi Alliance. Any use of these marks on this website does not imply any affiliation with or endorsement.