



DOMO DO333IP Induction Hob Timer Function With Display Corded User Manual

[Home](#) » [DOMO](#) » DOMO DO333IP Induction Hob Timer Function With Display Corded User Manual 

DOMO

DO333IP
Instruction booklet



PRODUCT OF **LINEA** 2000



Read all instructions carefully – save this instruction manual for future reference.

Contents

- 1 WARRANTY
- 2 SAFETY INSTRUCTIONS
- 3 PARTS
- 4 BEFORE THE FIRST USE
- 5 USE
- 6 CONNECTING
- 7 CLEANING AND MAINTENANCE
- 8 ENVIRONMENTAL GUIDELINES
- 9 Documents / Resources
- 10 Related Posts

WARRANTY

Dear client,

All of our products are always submitted to a strict quality control before they are sold to you. Should you nevertheless experience problems with your device, we sincerely regret this. In that case, we kindly request you to contact our customer service. Our staff will gladly assist you.



+32 14 21 71 91



info@linea2000.be

Monday – Thursday: 8.30 – 12.00 and 13.00 – 17.00

Friday: 8.30 – 12.00 and 13.00 – 16.30

This appliance has a two-year warranty period. During this period the manufacturer is responsible for any failures that are the direct result of construction failure. When these failures occur the appliance will be repaired or replaced if necessary. The warranty will not be valid when the damage to the appliance is caused by wrong use, not following the instructions or repairs executed by a third party. The guarantee is issued with the original till receipt. All parts, which are subject to wear, are excluded from the warranty.

If your device breaks down within the 2-year warranty period, you can return the device together with your receipt to the shop where you purchased it.

The guarantee on accessories and components that are liable to wear and tear is only 6 months.

The guarantee and responsibility of the supplier and manufacturer lapse automatically in the following cases:

- If the instructions in this manual have not been followed.
- In case of incorrect connection, e.g., electrical voltage that is too high.
- In case of incorrect, rough, or abnormal use.
- In case of insufficient or incorrect maintenance.
- In case of repairs or alterations to the device by the consumer or non-authorized third parties.
- If the customer used parts or accessories that are not recommended or provided by the supplier/manufacturer.

SAFETY INSTRUCTIONS

When using electrical appliances, basic safety precautions should always be taken, including the following:

- Read all instructions carefully. Keep this manual for future reference.
- Make sure all packaging materials and promotional stickers have been removed before using the appliance for

the first time. Make sure children cannot play with the packaging materials.

- This appliance is intended to be used in household and similar applications such as:
 - staff kitchen areas in shops, offices, and other working environments;
 - farmhouses;
 - by clients in hotels, motels, and other residential type environments;
 - bed and breakfast type environments.
- Children should be supervised to ensure that they do not play with the appliance.
- This appliance can be used by children aged from 16 years and above and persons with reduced physical, sensory or mental capabilities or lack of experience and knowledge if they have been given supervision or instruction concerning use of the appliance in a safe way and understand the hazards involved. Children shall not play with the appliance. Cleaning and user maintenance shall not be made by children unless they are older than 16 and supervised.
- Keep the appliance and its cord out of reach of children younger than 16 years.
- Attention: The appliance is not intended to be operated by means of an external timer or separate remote control system.



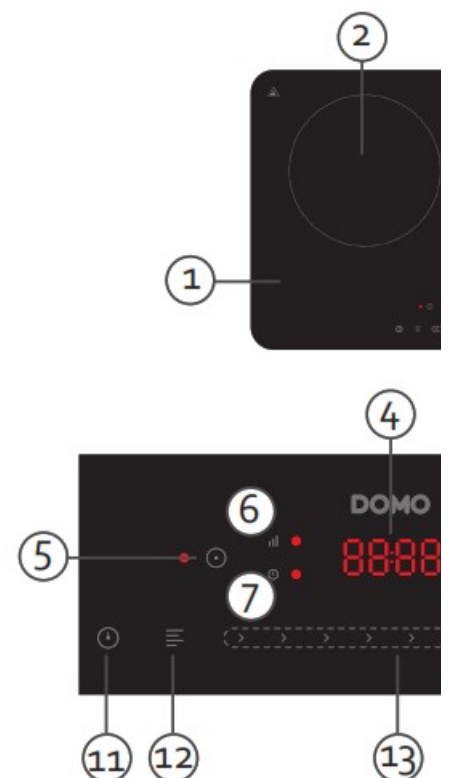
The appliance can become hot during use. Keep the power cord away from hot parts and don't cover the appliance.

- Before use, check if the voltage stated on the appliance corresponds with the voltage of the power net at your home.
- Do not let the cord hang on a hot surface or on the edge of a table or counter top.
- Never use the appliance when the cord or plug is damaged, after malfunction or when the appliance itself is damaged. In that case, take the appliance to the nearest qualified service center for check-up and repair.
- Close supervision is necessary when the appliance is used near or by children.
- The use of accessories that are not recommended or sold by the manufacturer can cause fire, electrical shock or injuries.
- Unplug the appliance when it is not in use, before assembling or disassembling any parts and before cleaning the appliance. Put all buttons and knobs into the 'off' position and unplug the appliance by grasping the plug. Never unplug by pulling the cord.
- Do not leave a working appliance unattended.
- Never place this appliance near a gas stove or electrical stove or in a place where it may come into contact with a warm appliance.
- Do not use the appliance outdoors.
- Only use the appliance for its intended use.
- Always use the appliance on a steady, dry and level surface.
- Only use the appliance for domestic use. The manufacturer can not be held responsible for accidents that result from improper use of the appliance or not following the instructions described in this manual.
- If the supply cord is damaged, it must be replaced by the manufacturer, its service agent or similarly qualified persons in order to avoid a hazard.
- Never immerse the appliance, the cord or the plug in water or any other liquid.
- Make sure that children do not touch the cord or appliance.
- Keep the cord away from sharp edges and hot parts or other heat sources.
- Never place the device on metal or a flammable surface (e.g. table cloth, carpet, etc.).

- Do not block the ventilation slots of the device. This may overheat the device. Keep a min. distance of 10 cm (2.5 inches) to walls or other items.
- Do not place the induction hotplate next to devices or objects, which react sensitively to magnetic fields (e.g. radios, TVs, cassette recorders, etc.).
- Do not place induction hotplates next to open fires, heaters or other sources of heat.
- Make sure that the mains connection cable is not damaged or squashed beneath the device.
- Make sure that the mains connection cable does not come into contact with sharp edges and/or hot surfaces.
- If the surface is cracked, switch off the appliance to avoid the possibility of electric shock.
- Metallic objects such as knives, forks, spoons and lids should not be placed on the hotplate since they can get hot.
- Do not place any magnetically objects like credit cards, cassettes etc. on the glass surface while the device is in operation.
- On order to avoid overheating, do not place any aluminium foil or metal plates on the device.
- Do not insert any objects like wires or tools into the ventilation slots. Attention: this may cause electric shocks.
- Do not touch the hot surface of the ceramic field. Please note: the induction hotplate does not heat up itself during cooking, but the temperature of the cookware heats up the hotplate!
- Do not heat up any unopened tins on the induction hotplate. A heated tin could explode; therefore remove the lid under all circumstances beforehand.
- Scientific tests have proven that induction hotplates do not pose a risk. However, persons with a pacemaker should keep a minimum distance of 60 cm to the device while it is in operation.
- The control panel reacts to touch, not requiring any pressure at all.
- Each time a touch is registered, you hear a signal or beep.

PARTS

1. Ceramic hob
2. Cooking zone 1
3. Cooking zone 2
4. Display
5. Button for cooking zone 1
6. Power indicator light
7. Timer indicator light
8. Child lock indicator light
9. Temperature indicator light
10. Button for cooking zone 2
11. Timer knob
12. Mode knob
13. Slide control
14. Child lock button
15. On/Off button



BEFORE THE FIRST USE

- Make sure all packaging materials and promotional stickers have been removed before using the appliance for the first time.
- Always use the appliance on a steady, dry and level surface.



- Use pots and pans that are suited for induction hobs. This can be tested easily.
The bottom of your pots and pans must be magnetic. Take a magnet and place it on the bottom of your pot or pan, if it sticks the bottom is magnetic and the pot is suited for ceramic cooking plates.
- The cooking zone has a diameter of 20 cm. The diameter of your pot or pan should be at least 12 cm.

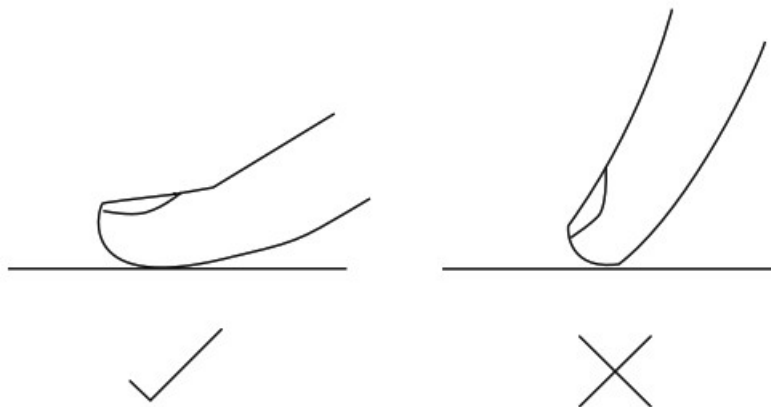


- Make sure the bottom of your pot is not deformed. If the bottom is hollow or convex, the heat distribution will not be optimal. If this makes the hob too hot, it may break.



USE

The control panel is equipped with touch-screen operation. You do not need to press any buttons – the appliance will respond to touch. Make sure that the control panel is always clean. Each time it is touched, the appliance will respond with a signal.



CONNECTING

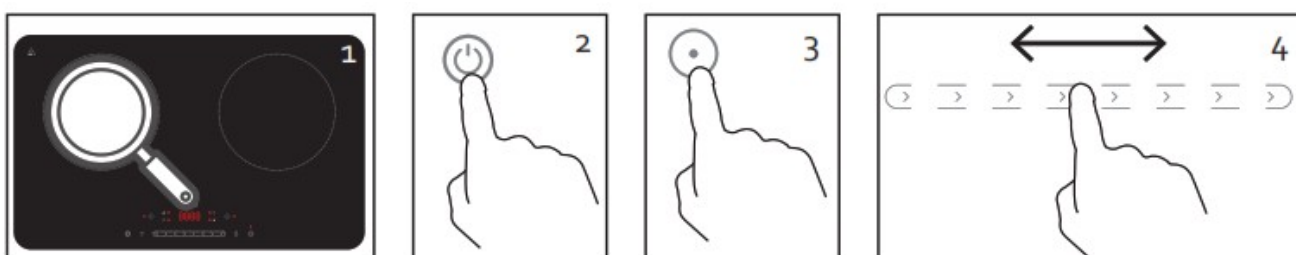
When you place the plug in the outlet, you will hear a signal. On the display 4 dashes [—] are flashing and the indicator light of the power button is also flashing. Meaning that the hob has gone into standby mode.

USE

1. When operating the device, please put on a pan/pot firstly. Note: Always place the pot or pan in the centre of the hotplate.
2. Keep the on/off button pressed to turn the the hob on. You hear a signal and 4 dashes [—] appear on the display. The indicator light of the on/off button lights up.
3. Press the button for the desired cooking zone. The indicator light for the selected cooking zone lights up and 2 dashes [—] appear on the display.
4. Now select the desired power with the slider. You can choose from 7 different settings, of which P7 is the hottest and P1 the coldest. The selected setting is shown on the display.

Display	P1	P2	P3	P4	P5	P6	P7
Power	300 W	600 W	1000 W	1300 W	1500 W	1800 W	2000 W

5. Press the on/off button again to turn off the appliance. The ventilation stays on for a while to cool down.



The power on the display is always that of the selected zone. The indicator light next to the button for the cooking zone lights up for the selected zone. If you want to increase or decrease the power of a cooking zone, you have to check which zone is selected. To change zones, press the cooking zone button.



Attention: the appliance will sound several times if the correct pot is not on the hob and will then automatically switch off after one minute. The display shows the error message [E0].

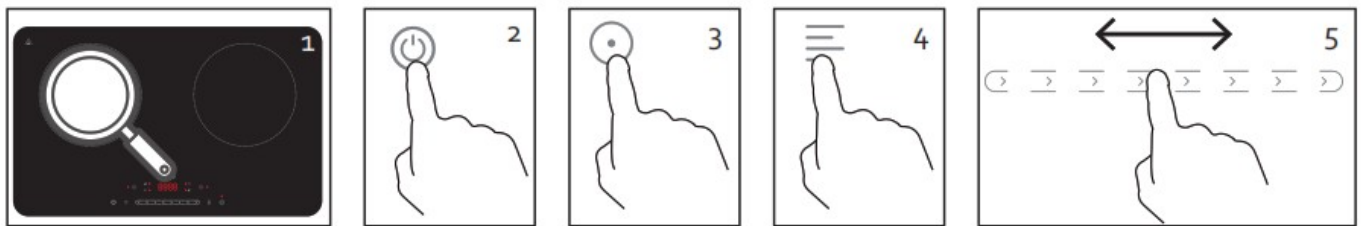
TEMPERATURE

Instead of displaying in power setting, you can also choose to display in temperature expressed in °C.

1. Before turning on the appliance, you must first place a pot or pan on the cooking surface. Attention: always place the pot or pan in the middle of the hob.
2. Press and hold the on/off button to turn the hob on. You hear a signal and 4 dashes [—] appear on the display. The indicator light of the on/off button lights up.
3. Press the button for the desired cooking zone. The indicator light for the selected cooking zone lights up and 2 dashes [—] appear on the display.
4. Press the function button to switch to temperature display. The default setting of 210°C is switched on and the temperature indicator light is illuminated.
5. You can adjust the setting with the slide control. You can choose from 7 different settings. The selected setting is shown on the display.

Display	60	80	120	150	180	210	240
Temperature	60°C	90°C	120°C	150°C	180°C	210°C	240°C

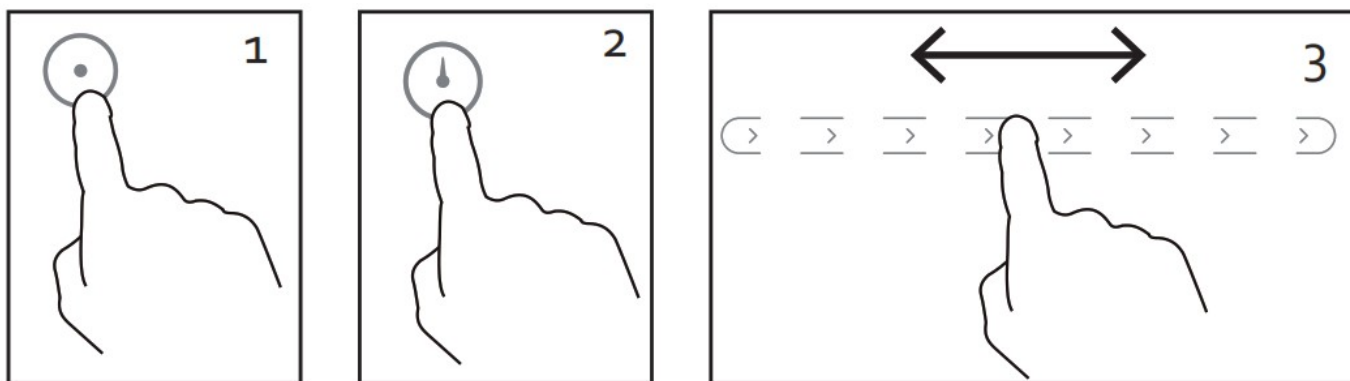
6. Press the on/off button again to turn off the appliance. The ventilation stays on for a while to cool down.



TIMER

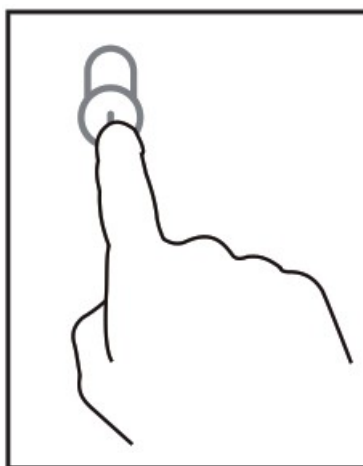
You can set a timer on both cooking zones. When the timer is ready, the cooking zone to which the timer is set automatically switches off.

1. First press the button for the cooking zone on which you want to activate the timer.
2. Press the timer button to set the timer. The timer indicator light illuminates. On the display, the default setting flashes 30 minutes [00:30].
3. You can set the desired time using the slide control between 1 minute [00:01] and 3 hours [03:00]. It is not necessary to confirm the desired setting. If you don't enter any more settings for a few seconds, the timer is set. The time on the display no longer flashes.
4. When the desired time is set, the timer will appear on the display alternating with the selected temperature setting. The timer indicator is illuminated to indicate that the timer is set.
5. If you want to turn off the timer, press and hold the timer button for a few seconds. Make sure you have selected the correct zone.



CHILDPROOF LOCK

- Press the child lock button for a few seconds to turn the lock on. The indication light indicates that the lock has been activated. Only the on/off button will work if this function is set, no other buttons will respond.
- Keep this button pressed for a few seconds to turn this function off again.



CLEANING AND MAINTENANCE

- Pull the power plug prior to cleaning the device. Do not use any caustic cleaning agents and make sure that no water penetrates the device.
- To protect yourself from electric shock, never immerse the device, its cables and the plug in water or other liquids.
- Wipe off the ceramic field with a damp cloth or use a mild, non-abrasive soap solution.
- Wipe off the casing and the operating panel with a soft cloth or a mild detergent.
- Do not use any petrol products to not damage the plastic parts and the casing/operating panel.
- Do not use any flammable, acidic or alkaline materials or substances near the device, as this may reduce the service life of the device and lead to deflagration when the device is turned on.
- Make sure that the bottom of the cookware does not scrape across the surface of the ceramic field, although a scratched surface does not impair the use of the device.
- Make sure that the device was properly cleaned before storing it in a dry place.
- Make sure that the control panel is always clean and dry. Do not leave any objects lying on the hob.

ENVIRONMENTAL GUIDELINES



This symbol on the product or on its packaging indicates that this product may not be treated as household waste. Instead it must be brought to the applicable collection point for recycling of electrical and electronic equipment. By ensuring this product is disposed of correctly, you will help prevent potential negative consequences for the environment and human health, which could otherwise be caused by inappropriate waste handling of this product. For more detailed information about recycling of this product, please contact your local city office, your household waste disposal service or the shop where you purchased the product.



The packaging is recyclable. Please treat the packaging ecologically.

DOMO

Webshop

ORDER

the original Domo accessories and parts online at: webshop.domo-elektro.be



or scan here:




<http://webshop.domo-elektro.be>

LINEA 2000 BV – Dompel 9 – 2200 Herentals – Belgium –
Tel: +32 14 21 71 91 – Fax: +32 14 21 54 63

Documents / Resources

DOMO



DO333IP

Assembly

Installation

Operation

Disassembly

Accessories

Technical data

Warranty

Index

Assembly

Installation

Operation

Disassembly

Accessories

Technical data

Warranty

Index

Assembly

Installation

Operation

Disassembly

Accessories

Technical data

Warranty

Index

Assembly

Installation

Operation

Disassembly

Accessories

Technical data

Warranty

Index

DOMO DO333IP Induction Hob Timer Function With Display Corded [pdf] User Manual

DO333IP, Induction Hob Timer Function With Display Corded, DO333IP Induction Hob Timer Function With Display Corded

Manuals+.com