



# DOMO DO1090C 3 in 1 Snack Maker Instruction Manual

[Home](#) » [DOMO](#) » DOMO DO1090C 3 in 1 Snack Maker Instruction Manual 

## Contents

- [1 DOMO DO1090C 3 in 1 Snack Maker](#)
- [2 SAFETY INSTRUCTIONS](#)
- [3 INSTALLATION](#)
- [4 CLEANING AND MAINTENANCE](#)
- [5 PARTS](#)
- [6 BEFORE THE FIRST USE](#)
- [7 FITTING AND REMOVING THE BAKING TRAYS](#)
- [8 USE](#)
- [9 CLEANING AND MAINTENANCE](#)
- [10 ENVIRONMENTAL GUIDELINES](#)
- [11 ABOUT COMPANY](#)
- [12 Documents / Resources](#)
  - [12.1 References](#)
- [13 Related Posts](#)

# DOMO

**DOMO DO1090C 3 in 1 Snack Maker**



**Dear client ,**

- All of our products are always submitted to a strict quality control before they are sold to you.
- Should you nevertheless experience problems with your device, we sincerely regret this.
- In that case, we kindly request you to contact our customer service.
- Our staff will gladly assist you.
  - +32 14 21 71 91
  - [info@linea2000.be](mailto:info@linea2000.be)
  - Monday – Thursday: 8.30 – 12.00 and 13.00 – 17.00
  - Friday: 8.30 – 12.00 and 13.00 – 16.30
- This appliance has a two year warranty period. During this period the manufacturer is responsible for any failures that are the direct result of construction failure. When these failures occur the appliance will be repaired or replaced if necessary. The warranty will not be valid when the damage to the appliance is caused by wrong use, not following the instructions or repairs executed by a third party. The guarantee is issued with the original till receipt. All parts, which are subject to wear, are excluded from the warranty.
- If your device breaks down within the 2-year warranty period, you can return the device together with your receipt to the shop where you purchased it.
- The guarantee on accessories and components that are liable to wear-and-tear is only 6 months.
- The guarantee and responsibility of the supplier and manufacturer lapse automatically in the following cases:
  - If the instructions in this manual have not been followed.
  - In case of incorrect connection, e.g., electrical voltage that is too high.
  - In case of incorrect, rough or abnormal use.
  - In case of insufficient or incorrect maintenance.
  - In case of repairs or alterations to the device by the consumer or non-authorised third parties.
  - If the customer used parts or accessories that are not recommended or provided by the supplier / manufacturer.

## **SAFETY INSTRUCTIONS**

When using electrical appliances, basic safety precautions should always be taken, including the following:

- Read all instructions carefully. Keep this manual for future reference.

- Make sure all packaging materials and promotional stickers have been removed before using the appliance for the first time. Make sure children cannot play with the packaging materials.
- This appliance is intended to be used in household and similar applications such as:
  - staff kitchen areas in shops, offices and other working environments;
  - farm houses;
  - by clients in hotels, motels and other residential type environments;
  - bed and breakfast type environments.
- Children should be supervised to ensure that they do not play with the appliance.
- This appliance can be used by children aged from 16 years and above and persons with reduced physical, sensory or mental capabilities or lack of experience and knowledge if they have been given supervision or instruction concerning use of the appliance in a safe way and understand the hazards involved. Children shall not play with the appliance. Cleaning and user maintenance shall not be made by children unless they are older than 16 and supervised.
- Keep the appliance and its cord out of reach of children younger than 16 years.
- All repairs should be carried out by the manufacturer or its aftersales service.
- Any injury or damage caused by failure to comply with these rules are at your own risk. Neither the manufacturer, importer, or the supplier may be held liable.

## **ELECTRICAL WARNINGS**

- In order to avoid a hazard this appliance must not be supplied through an external switching device, such as a timer or a separate remote control, or connected to a circuit that is regularly switched on and off by the utility.
- The appliance must be disconnected from its power source when not in use, during service and when replacing parts. Allow to cool before putting on or taking off parts, and before cleaning the appliance. To disconnect, turn controls to “OFF” or “0” position, then remove the plug from the wall. Never pull the cord or appliance to remove the plug from the socket.
- Check carefully that the voltage and frequency of the power net match the indications on the rating label of the appliance.
- The plug must be plugged into an appropriate outlet that is installed and grounded in accordance with all local standards and requirements.
- Do not let the power supply cord hang over the edge of a counter, or touch hot surfaces.
- Keep the power cord away from hot parts and don't cover the appliance.
- Unwrap the cord completely to prevent overheating of the cord. Do not allow the power cord supply to run underneath or around the unit.
- The appliance may not be used with an extension lead or a multiple socket.
- Do not operate this appliance with a damaged cord or plug or in the event the appliance malfunctions or has been damaged in any manner. Return the appliance to the DOMO Service Department or its service agent for examination, repair, or electrical or mechanical adjustment. Do not try to repair the appliance yourself.

## **INSTALLATION**

- Do not place near flammable materials, gases or explosives.
- Do not use or store this appliance outdoors.
- Always use the appliance on a steady, dry and level surface.

- Never place this appliance near a gas stove or electrical stove or in a place where it may come into contact with a warm appliance.

## **USE**

- Do not use this appliance for other than intended use.
- Only use the appliance for domestic use. The manufacturer cannot be held responsible for accidents that result from improper use of the appliance or not following the instructions described in this manual.
- Never leave the appliance unattended while it is functioning.
- Do not operate the appliance with wet hands.
- The use of accessories that are not recommended or sold by the manufacturer can cause fire, electrical shock or injuries. Only use the utensils delivered with the appliance.

## **CLEANING AND MAINTENANCE**

- To protect against electrical shock or burns, do not immerse unit, cord, or plug in water or other liquid.
- Failure to maintain this appliance in a clean condition could adversely affect the life of the appliance and possibly result in a hazardous situation.

## **PRODUCT-SPECIFIC WARNINGS**

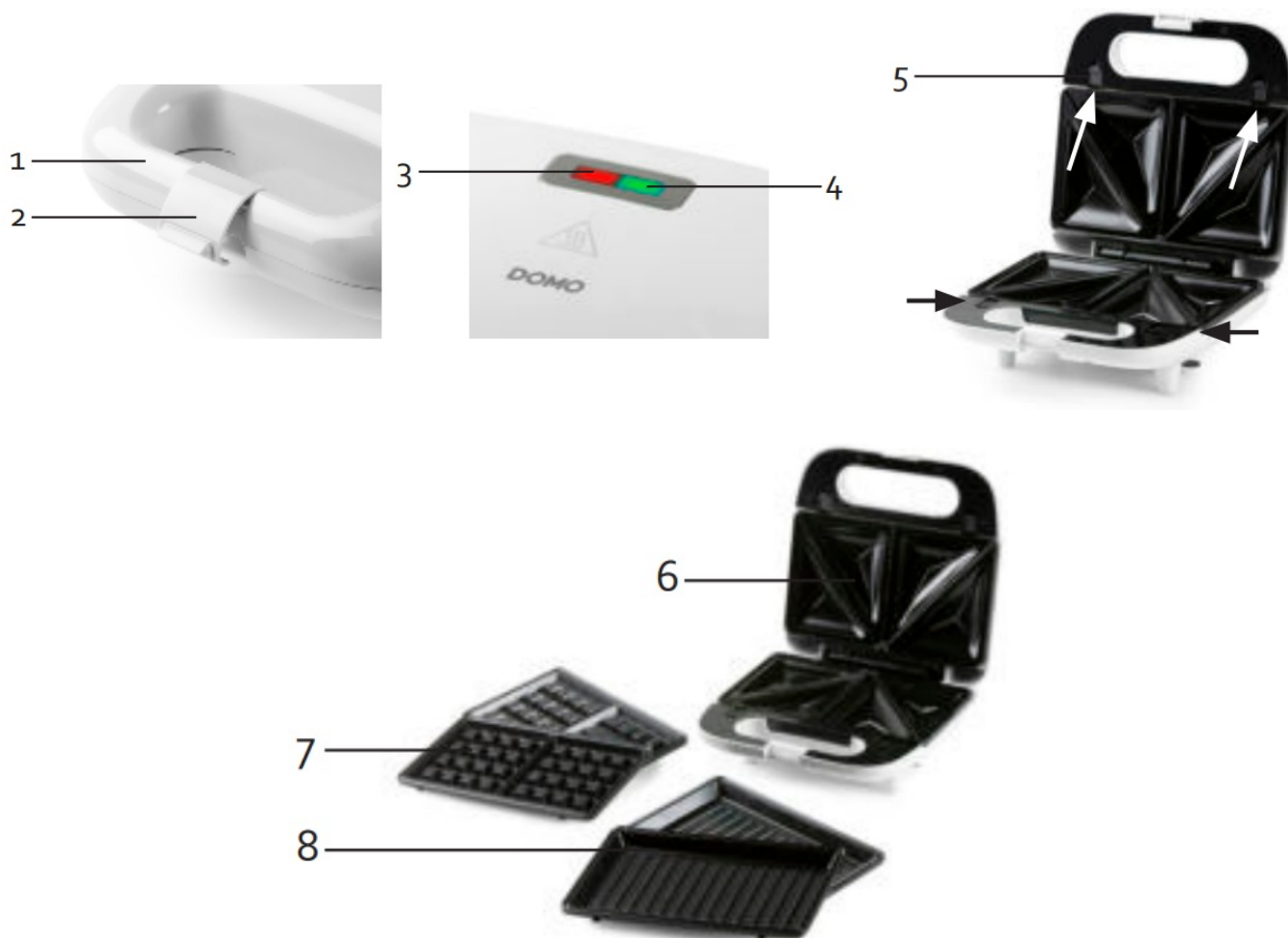
- Only use the appliance indoors and be careful with hot areas and materials such as curtains, tablecloths, etc.
- Preferably use a heat resistant mat underneath the appliance base is flat and level.
- Allow the appliance to cool off completely before cleaning or storing it.
- Never touch any hot parts while the appliance is switched on and being used.
- Do not move the appliance when it is warm or hot.
- Clean the appliance directly after use because it has been in contact with foodstuffs.
- Keep the appliance free of oil on its parts. Oil is very inflammable.
- Never use any sharp objects such as knives or forks on the different parts, always use wooden spoons/spatulas.

The appliance can become hot during use.

- Make sure that the air can circulate freely around the appliance.
- Do not use a metal scouring pad to clean the appliance. Metal fragments can break off and come into contact with the electrical components of the appliance, causing a short circuit.
- Do not use the appliance if it still contains water or parts are still wet from cleaning.
- If the appliance falls into water, immediately pull the mains plug from the wall socket. Do not touch or reach into the water.
- Do not use the device on a surface that can be damaged by steam or heat.
- Do not use the appliance near water or other liquids.
- To avoid circuit overload while using the appliance, do not use any other high wattage appliance on the same electrical circuit.

**SAVE THESE INSTRUCTIONS FOR FUTURE REFERENCE**

## **PARTS**



## BEFORE THE FIRST USE

- Remove all packing materials and carefully clean the appliance before first use (See “Cleaning and maintenance”).
- Attention: when using the appliance for the first time, the baking trays may emit a small amount of smoke and odour. This is normal. Clean the appliance with absorbent paper or a clean, dry cloth to remove any residue.
- Place the unit preferably on a surface that is easy to clean. The surface should also be heat-resistant. Do not place the appliance on an untreated wooden surface.
- Make sure that there is enough ventilation around the grill.

## FITTING AND REMOVING THE BAKING TRAYS

1. Remove the mains plug from the wall socket and wait until the appliance has cooled down completely. Choose the sandwich toaster, waffle tray or grilling tray. Attention: never use the appliance with only 1 baking tray. Always make sure 2 baking trays are fitted correctly.
2. Place the baking trays in the appliance through the openings provided along the hinge. The baking trays have a wider end on one side than the other. The wide end should slide into the appliance along the hinge of the appliance. Then click on the other side.
3. To remove the baking plates from the appliance, slide the release lever out.

**Attention:** do not allow the baking trays to come into contact with metal cutlery or other metal objects in order to avoid causing damage to the non-stick coating. Always use a heat-resistant plastic or wooden spatula.



## USE

1. Place the appliance on a dry, flat surface and ensure there is adequate ventilation.
2. Choose from one of the 3 sets of baking trays supplied: sandwich toaster, waffle or grilling. Fit the baking plates (see chapter, "Fitting and removing the baking trays").
3. Apply a thin layer of vegetable oil to the baking tray. This will prevent sticking and cleaning after use will be easier.
4. Plug the power cord into a socket.
5. The appliance will start to heat up. The 'on/off' indicator light will illuminate to show that the appliance is on.
6. The 'ready to use' indicator light will illuminate when the appliance has reached the temperature. Open the appliance and place the food inside. Then close the appliance. It is recommended that the appliance be closed with the safety clip. We recommend you only do this when using the sandwich toaster baking trays.

**Note:** The 'ready to use' indicator light will go off and on regularly as the appliance continuously maintains its temperature.

7. When your preparation has finished baking, open the lid and remove the food from the appliance using a plastic or wooden spatula. Never use metal objects as these can damage the non-stick coating.
8. Remove the mains plug from the wall socket and wait until the appliance has cooled down completely.

**Note:** Defrost frozen food before putting it in the appliance.

## CLEANING AND MAINTENANCE

- Unplug the appliance before cleaning. Allow the appliance to cool down completely.
- Wipe the appliance clean with a damp cloth. Make sure that no moisture or grease gets into the ventilation holes. Then dry it well.
- Remove the baking trays from the appliance and wash in warm water with a mild detergent. Then dry thoroughly.

- Do not use abrasive or aggressive cleaning agents.
- Never immerse the appliance, electrical cord, or plug in water or any other liquid.
- When not in use, store the appliance on a flat dry surface. Close the safety lock to store the appliance in an upright position. Simply wrap the cord around the cord storage bar.



## ENVIRONMENTAL GUIDELINES


- This symbol on the product or on its packaging indicates that this product may not be treated as household waste. Instead it must be brought to the applicable collection point for recycling of electrical and electronic equipment. By ensuring this product is disposed of correctly, you will help prevent potential negative consequences for the environment and human health, which could otherwise be caused by inappropriate waste handling of this product. For more detailed information about recycling of this product, please contact your local city office, your household waste disposal service or the shop where you purchased the product.
- The packaging is recyclable. Please treat the packaging ecologically.

**ORDER the original Domo accessories and parts online at: [webshop.domo-elektro.be](http://webshop.domo-elektro.be)**

## ABOUT COMPANY

- LINEA 2000 BV
- Dompel 9
- 2200 Herentals
- Belgium
- **Tel:** +32 14 21 71 91
- **Fax:** +32 14 21 54 63

## Documents / Resources

 <p>DOMO</p> <p>DO1090C</p> <p>Linea 2000 BV Dompel 9 2200 Herentals Belgium Tel: +32 14 21 71 91 Fax: +32 14 21 54 63</p> <p>CE</p>	<p><b><a href="#">DOMO DO1090C 3 in 1 Snack Maker</a> [pdf] Instruction Manual</b></p> <p>DO1090C 3 in 1 Snack Maker, DO1090C, DO1090C Snack Maker, 3 in 1 Snack Maker, Snack Maker</p>
---	---

## References

-  [www.ELEKTROKOLA.cz](http://www.ELEKTROKOLA.cz) - Crussis, Ghost, Kellys, Leader Fox, Pells, Specialized - doprava zdarma

Manuals+.