



DOMETIC DTB01 Power and Control Display Instruction Manual

[Home](#) » [Dometic](#) » DOMETIC DTB01 Power and Control Display Instruction Manual 

Contents

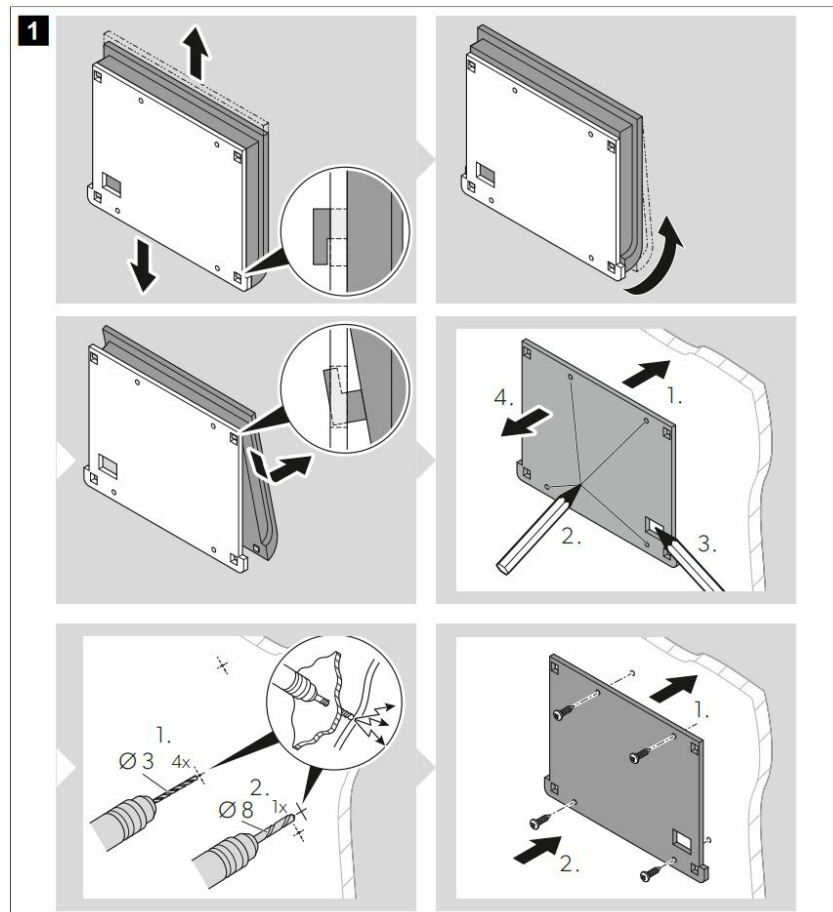
- [1 DOMETIC DTB01 Power and Control Display](#)
- [2 List of Figures](#)
- [3 Explanation of symbols](#)
- [4 Safety Instructions](#)
- [5 Intended use](#)
- [6 Installation](#)
- [7 Operation](#)
- [8 Warranty](#)
- [9 Documents / Resources](#)
 - [9.1 References](#)
- [10 Related Posts](#)

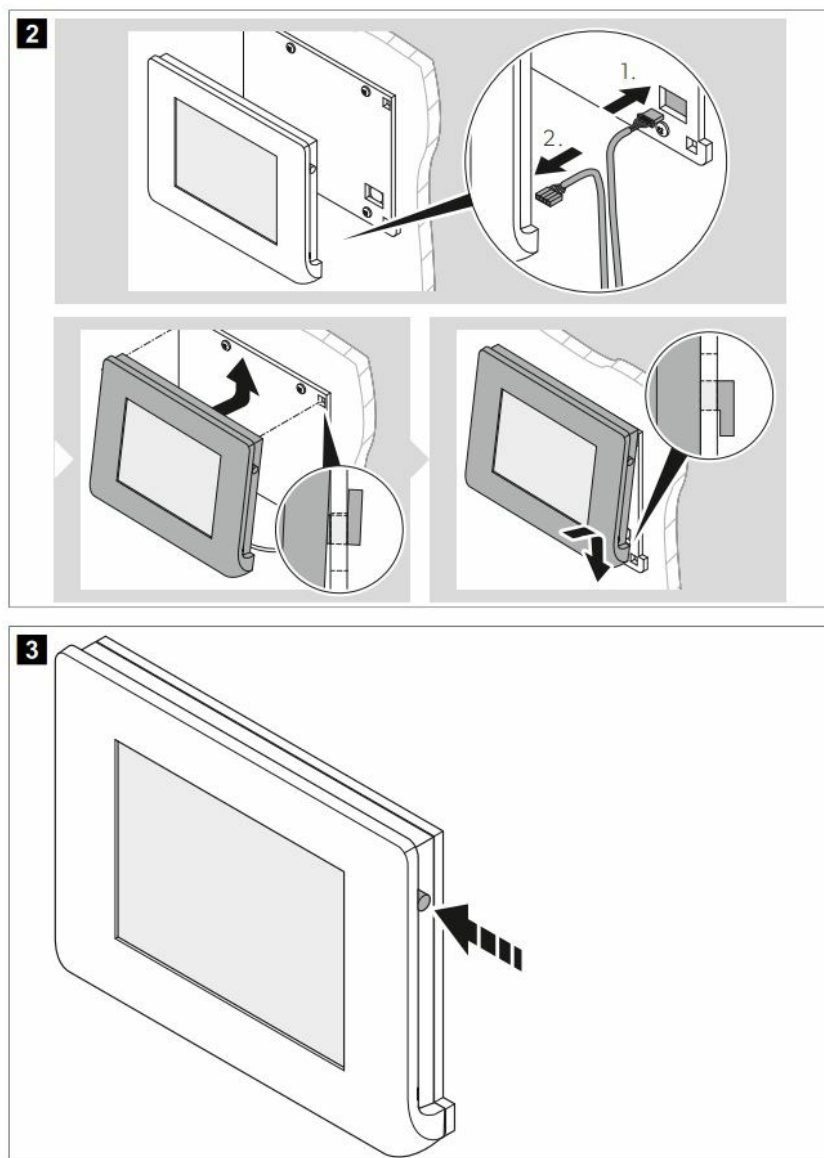


DOMETIC DTB01 Power and Control Display



List of Figures





Important notes

Please read these instructions carefully and follow all instructions, guidelines, and warnings included in this product manual to ensure that you install, use, and maintain the product properly at all times. These instructions **MUST** stay with this product. By using the product, you hereby confirm that you have read all instructions, guidelines, and warnings carefully and that you understand and agree to abide by the terms and conditions as set forth herein. You agree to use this product only for the intended purpose and application and by the instructions, guidelines, and warnings as outlined in this product manual as well as by all applicable laws and regulations.

A failure to read and follow the instructions and warnings set forth herein may result in an injury to yourself and others, damage to your product or damage to other property in the vicinity. This product manual, including the instructions, guidelines, and warnings, and related documentation, may be subject to changes and updates. For up-to-date product information, please visit documents.dometic.com.

Explanation of symbols



DANGER!

Indicates a hazardous situation that, if not avoided, will result in death or serious injury.



WARNING!

Indicates a hazardous situation that, if not avoided, will result in death or serious injury.

**CAUTION!**

Indicates a hazardous situation that, if not avoided, could result in minor or moderate injury.

**NOTICE!**

Indicates a hazardous situation that, if not avoided, could result in minor or moderate injury.

**Note**

Supplementary information for operating the product.

Related documents

Find the operating manual online at <https://documents.dometic.com/object.id=87609>.

Safety Instructions**WARNING!** Electrocution hazard

- Installation and removal of the device may only be carried out by qualified personnel.
- Do not operate the device if it is visibly damaged.
- This device may only be repaired by qualified personnel. Improper repairs can result in considerable hazards.

**WARNING!** Fire hazard

- Keep the ventilation openings on the device housing or in installations free of obstructions.

**WARNING!** Health hazard

- This appliance can be used by children aged 8 years and above and persons with reduced physical, sensory or mental capabilities or lack of experience and knowledge if they have been given supervision or instruction concerning the use of the appliance in a safe way and understand the hazards involved.
- Children shall not play with the appliance.
- Cleaning and user maintenance shall not be done by children without supervision.

**WARNING!** Explosion hazard

- Do not store any explosive substances, such as spray cans with propellants, in the device.

**NOTICE!** Damage hazard

- Protect the device and cables against heat and moisture.
- Do not expose the device to rain.
- Do not install the device in a dusty environment.
- Make sure that the mounting surface is capable of supporting the weight of the device.
- Use ductwork or cable ducts if it is necessary to lay cables through metal panels or other panels with sharp edges.
- Fasten the cables securely.
- Do not pull on the cables.

Intended use

The display is intended to control N-BUS or CI-BUS devices and to monitor energy parameters while driving. The display is intended to be used as an optional device with the following N-BUS or CI-BUS devices:

- Batteries
- Chargers
- Solar panels

The display is suitable for

- Installation in recreational vehicles
- Installation on boats or yachts
- Stationary or mobile use
- Indoor use

The display is not suitable for

- Mains operation
- Outdoor use

This product is only suitable for the intended purpose and application of these instructions. This manual provides information that is necessary for the proper installation and/ or operation of the product. Poor installation and/ or improper operation or maintenance will result in unsatisfactory performance and possible failure. The manufacturer accepts no liability for any injury or damage to the product resulting from:

- Incorrect assembly or connection, including excess voltage
- Incorrect maintenance or use of spare parts other than the original spare parts provided by the manufacturer
- Alterations to the product without express permission from the manufacturer
- Use for purposes other than those described in this manual
- Dometic reserves the right to change product appearance and product specifications.

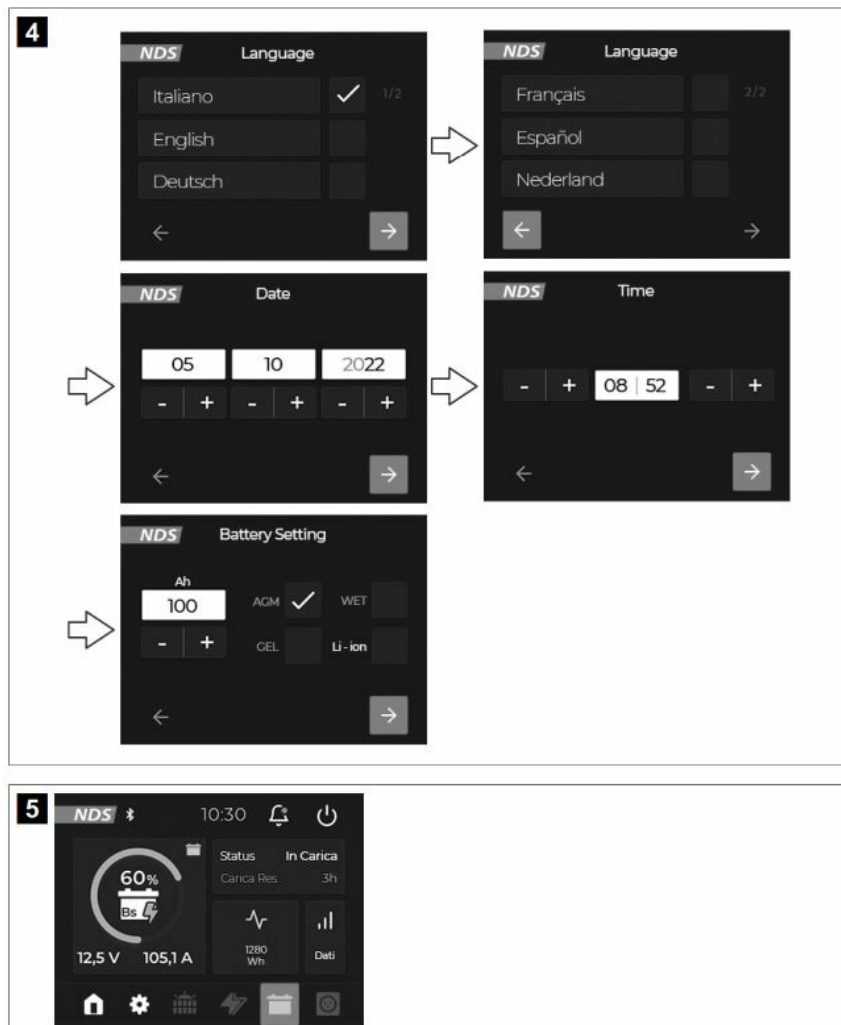
Installation

Mounting the display

NOTICE! Damage hazard

- Using the wrong cables can lead to excessive overheating of the cables, high voltage drops and possible failures. Only use cables with a suitable cross-section that can withstand the current.
- To avoid radio interference, do not install the display near metal parts or in an area with high levels of electrical automation and high-frequency devices.
- Ensure that the screws are horizontal to each other.
- Ensure that the electronics board is mounted the right way around.
- The button must be on the bottom of the electronics board.
- Install the display as shown. fig. 1 on page 1
- Connecting the display

- Connect the display as shown. fig. 2 on page 2



Initially setting up the display

The display allows you to set up and control all networked N-BUS or CI-BUS devices. When the display is started for the first time, it searches for all connected devices and displays the setup menus of all devices in succession. After the start-up, set the required data by moving through the various screens with the selection buttons. The setup can also be completed later.


1. Press the ON/OFF button. fig. on page 2
2. After pressing the ON/OFF button, the loading screen is displayed and the network is initialized.
3. Set the required data by moving through the sequence of screens with the selection buttons. fig. on page 3

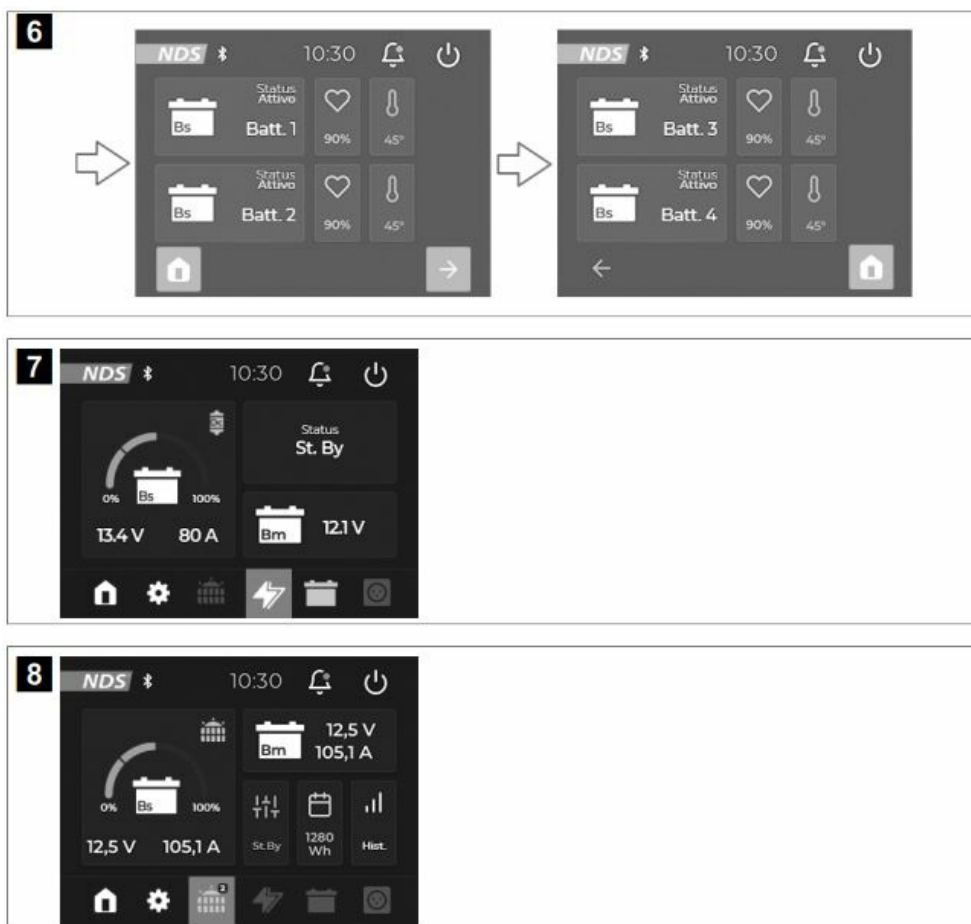
Operation



Using the device

When starting the display, only the menus for the connected devices are shown in succession. When operating the device, the display illumination is switched on and remains activated for 3 minutes. If there is no further operation within this time, the lighting switches off automatically. The display continues to show the same content as before with lighting. Pressing any button activates the display illumination. Only the second press of a button performs the actual function of the button.

Displaying data for the connected devices

1. Press the  button to display the battery screen of one or more batteries. fig. on page 3 fig. on page 4 The charging values of the battery are displayed.



2. Press the  button to display the charger screen. fig. on page 4 The charging values of the charger are displayed.
3. Press the  button to display the solar screen. fig. on page 4 The charging values of the solar panel are displayed.

Disposal

Place the packaging material in the appropriate recycling waste bins wherever possible. Consult a local recycling centre or specialist dealer for details about how to dispose of the product per the applicable disposal regulations. The product can be disposed of free of charge.

Warranty

The statutory warranty period applies. If the product is defective, please contact the manufacturer's branch in your country (see dometic.com/dealer) or your retailer. For repair and warranty processing, please include the following documents when you send in the device:

- A copy of the receipt with the purchasing date
- A reason for the claim or description of the fault
- Note that self-repair or nonprofessional repair can have safety consequences and might void the warranty.

DOMETIC
POWER & CONTROL
DISPLAY



1. Introduction	1.1. General information
2. Safety instructions	2.1. General safety instructions
3. Installation	3.1. General installation instructions
4. Operation	4.1. General operation instructions
5. Troubleshooting	5.1. General troubleshooting instructions
6. Maintenance	6.1. General maintenance instructions
7. Appendix	7.1. General appendix instructions
8. Index	8.1. General index instructions

[DOMETIC DTB01 Power and Control Display](#) [pdf] Instruction Manual
DTB01 Power and Control Display, DTB01, Power and Control Display, Control Display

References

- [† Telepathy - Powering Successful Brands](#)
- [† Telepathy - Powering Successful Brands](#)
- [User Manual](#)