


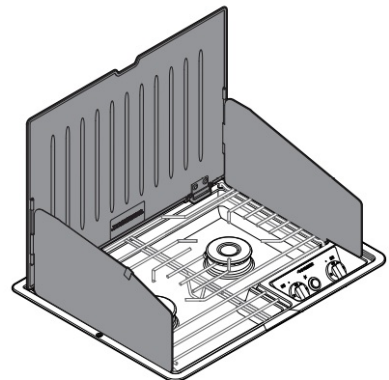
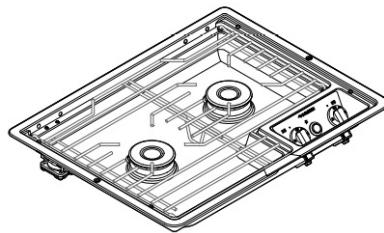
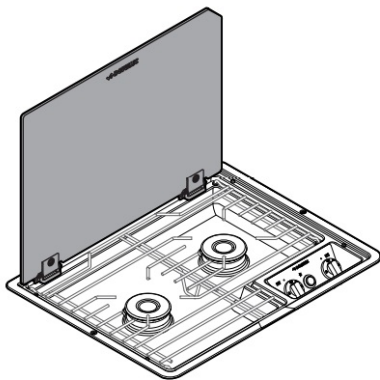


DOMETIC D21 Drop In Cooktop User Manual

[Home](#) » [Dometic](#) » DOMETIC D21 Drop In Cooktop User Manual 



HOT PRODUCTS
COOKTOP



D21

**D21 Drop-in Cooktop
Installation and Operating Manual**



Contents

- 1 D21 Drop In Cooktop
- 2 EXPLANATION OF SYMBOLS AND SAFETY INSTRUCTIONS
- 3 GENERAL INFORMATION
- 4 INTENDED USE
- 5 INSTALLATION
- 6 OPERATION
- 7 MAINTENANCE, CLEANING, AND STORAGE
- 8 DISPOSAL
- 9 REPLACEMENT PARTS
- 10 LIMITED TWO-YEAR WARRANTY
- 11 Documents / Resources
 - 11.1 References
- 12 Related Posts

D21 Drop In Cooktop

WARNING: If the information in this manual is not followed exactly, a fire or explosion may result, causing property damage, personal injury, or death.

- Do not store or use gasoline or other flammable vapors and liquids in the vicinity of this or any other appliance.
- WHAT TO DO IF YOU SMELL GAS

- Do not try to light any appliance.
- Do not touch any electrical switch.
- Do not use any phone in your recreational vehicle.
- Clear the recreational vehicle of all occupants.
- Turn off the gas supply tank valve(s) or main gas supply.
- Immediately call your gas supplier for instructions.
- If you cannot reach your gas supplier, call the fire department.

- Have the gas system checked and leakage source corrected by a qualified installer, service agency, manufacturer or dealer, or the gas supplier.

NORTH AMERICAN ADDRESS INFORMATION

USA & CANADA

Service Office
Dometic Corporation
1120 North Main Street
Elkhart, IN 46514
Service Center & Dealer Locations
Visit: www.dometic.com

REVISION F

Form No . 50269 12/22
©2022 Dometic Corporation
Read these instructions carefully.
These instructions must stay with this product.

EXPLANATION OF SYMBOLS AND SAFETY INSTRUCTIONS

This manual has safety information and instructions to help you eliminate or reduce the risk of accidents and injuries.

1.1 Recognize safety information



This is the safety alert symbol . It is used to alert you to potential physical injury hazards. Obey all safety messages that follow this symbol to avoid possible injury or death.

1.2 Understand signal words

A signal word will identify safety messages and property damage messages, and will indicate the degree or level of hazard seriousness .



indicates a hazardous situation that, if not avoided, could result in death or serious injury .



indicates a hazardous situation that, if not avoided, could result in minor or moderate injury .



is used to address practices not related to physical injury .



indicates additional information that is not related to physical injury.

1.3 Supplemental directives



Read and follow all safety information and instructions to avoid possible injury or death.

Read and understand these instructions before installation, use, and maintenance of this product.

Incorrect installation, operation, and maintenance of this product can lead to serious injury.

The installation must comply with all applicable local or national codes, including the latest edition of the following standards:

U.S.A.

- ANSI/NFPA70, National Electrical Code (NEC)
- ANSI/NFPA 1192, Recreational Vehicles Code
- ANSI Z21 .57, Recreational Vehicle Code

Canada

- CSA C22 .1, Parts I & II, Canadian Electrical Code
- CSA Z240 RV Series, Recreational Vehicles

1.4 General safety messages



Failure to obey the following warnings could result in death or serious injury:

- This product must be installed by a qualified service technician.
- Dometic gas-operated cooking units are for use with LP gas only and for installation in recreational vehicles only (e .g . travel trailers, motor homes, tent campers, etc .). Any other uses can lead to property damage, serious injury, or death.
- Improper installation, adjustment, service, or maintenance can cause injury, property damage, or death. Refer to this manual. For assistance or additional information, consult a qualified installer, service agency, manufacturer, or the gas supplier.
- Do not store or use gasoline or other flammable vapors and liquids in the vicinity of this or any other appliance.
- Shut off all gas appliances and pilot lights when refueling gasoline or LP tanks, or when the vehicle is in motion. Failure to do so can result in property damage, serious injury or death.

- Gas flames consume oxygen, which must be replaced to assure proper combustion . A window or air vent should be open slightly while using any cooking appliance. Failure to provide fresh air during combustion can lead to carbon monoxide poisoning and could result in serious injury or death.
- When the Cooktop is in use, the Cover must be fully open and in the upright position.

CAUTION

Do not use the Cover as a griddle or cooking surface . Doing so could result in property damage or injury.

NOTICE

The Cover must be closed when the vehicle is in motion.



Have the installer or dealer show you where the main gas shut off valve is located so that you will know how and where to turn off the gas supply when necessary.

GENERAL INFORMATION



The images used in this document are for reference purposes only . Components and component locations may vary according to specific product models . Measurements may vary ± 0.38 in . (10 mm).

Included Parts	Quantity
#6 x 3/4" Screws	2
(2) Nylon Washers	2
Corner Pieces	4

Recommended Tools

Drill	3/32" Drill Bit
#2 Drive Screwdriver	Crescent Wrenches (2)

Optional Parts*	Reference Number
Metal Cover	50236
Glass Cover	50255

* The glass cover is preinstalled on the SECG model and the metal cover is preinstalled on the BPWM models. Available as an accessory for all other models .

INTENDED USE

This Drop-in Cooktop (hereinafter referred to as "Cooktop") is designed and intended for use inside, or for temporary use outside, the recreational vehicle (hereinafter referred to as "RV") for which it is supplied . Use these instructions to ensure correct installation, function, and operation of the Cooktop. While this Cooktop is approved for outside installation, portable or outdoor installations into an enclosure not made from metal or wood must be approved by Dometic prior to use. Do not store the Cooktop outdoors. This Cooktop is not designed for installation adjacent to another Cooktop.

The manufacturer accepts no liability for damage in the following cases:

- Faulty assembly or connection .
- Damage to the product resulting from mechanical influences and excess voltage.
- Alterations to the product without express permission from the manufacturer.
- Use for purposes other than those described in the operating manual.

Dometic Corporation reserves the right to modify appearances and specifications without notice.

INSTALLATION

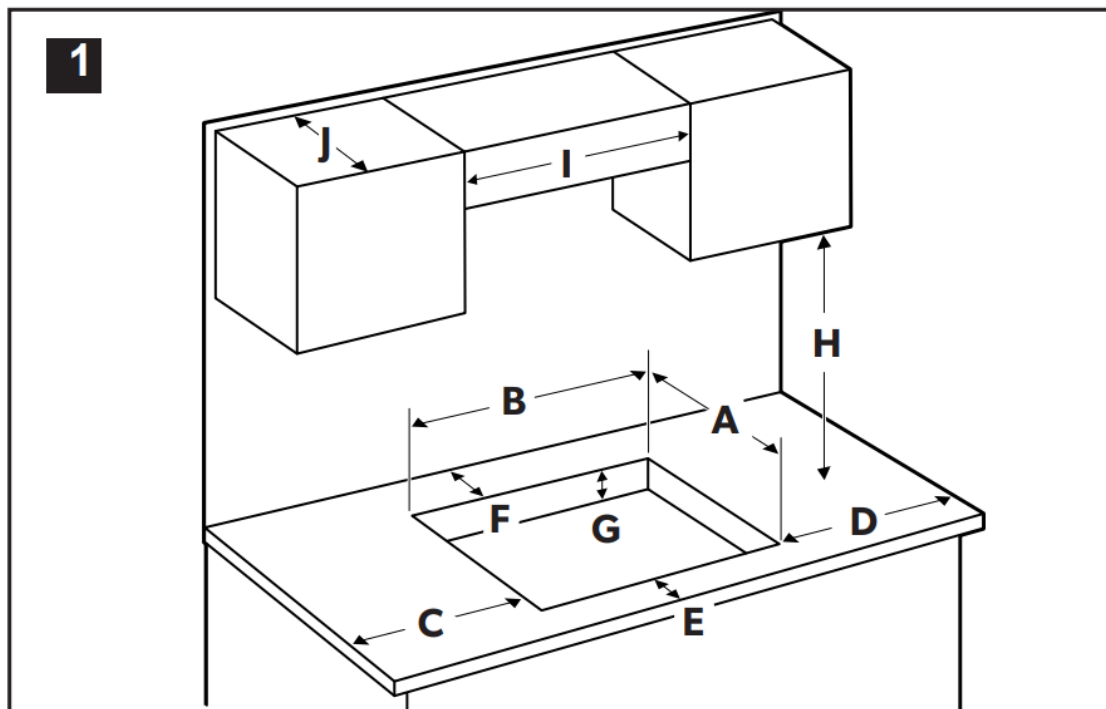


FIRE, EXPLOSION, OR BURN HAZARD . Do not use matches, candles, or other sources of ignition to test fittings and gas lines for leaks . Doing so could result in an explosion, causing serious injury or death. The gas line material between the Cooktop and the bottom shield must be rated for a minimum of 300°F (149°C) exposure.

4.1 Constructing the cabinet

For proper operation, the cabinet must:

- Be properly constructed of wood or metal, to the dimensions shown .
- Be squared to the counter top and cabinet face .
- Have the cabinet opening be level from side to side and from front to rear .
- Be positioned so that no combustible material can be placed next to the Cooktop sides. If there is a gap between the Cooktop and an adjacent cabinet, you must close the gap prior to installing the Cooktop.



A ‡	B ‡	C	D	E	F §
13 .75" (350 mm)	17 .875" (455 mm)	1 .875" (48 mm)	2 .25" (58 mm)	0 .75" (20 mm)	2 .625"/1 .125" (67 mm/29mm)

‡ For proper fit, these dimensions must be within +/- 1/8" (3 .2 mm).

§ 2 .625" (67 mm) for all models without preinstalled cover . 1 .2" (31 mm) for models with preinstalled cover (SECG and BPWM models).

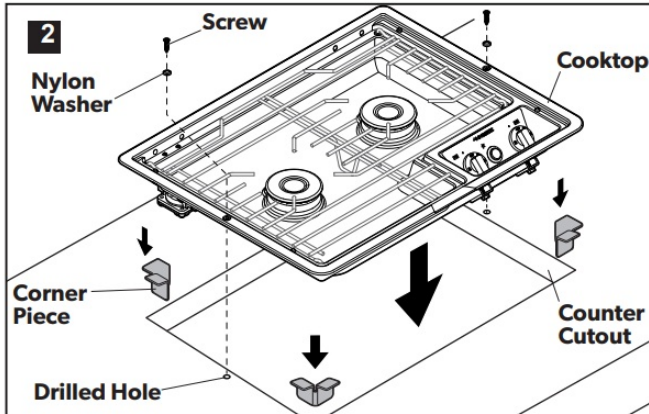
† 19 .50" (H) [20 mm] is the minimum vertical distance between combustible material and the Cooktop . Installer must follow requirements of table 2-6 .7 .2 of ANSI 1192.

* > nominal width of the Cooktop

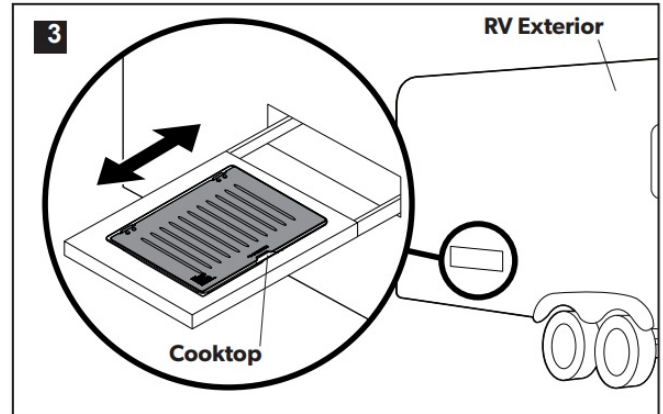
¥ 13 .00" (J) [331 mm] is the maximum depth of cabinets installed above cooking tops per ANSI Z21 .57, Clause 1 .25 .1 .L .

4.2 Placing your cooktop

Inside installation



Outside installation



➤ Locate and cut the opening in the countertop according to the dimensions in "4 .1 Constructing the cabinet" on page 5.

➤ Drill holes in the countertop to match the location of the screw holes on the Cooktop.

➤ Place one corner piece (supplied) at each corner of the opening, so that the lip of the corner piece is flat against the countertop.

➤ Insert the screws and nylon washers (supplied) to install the Cooktop.

➤ Place the Cooktop into the opening so that it rests on top of the corner pieces. Hand-tighten the screws to the countertop.

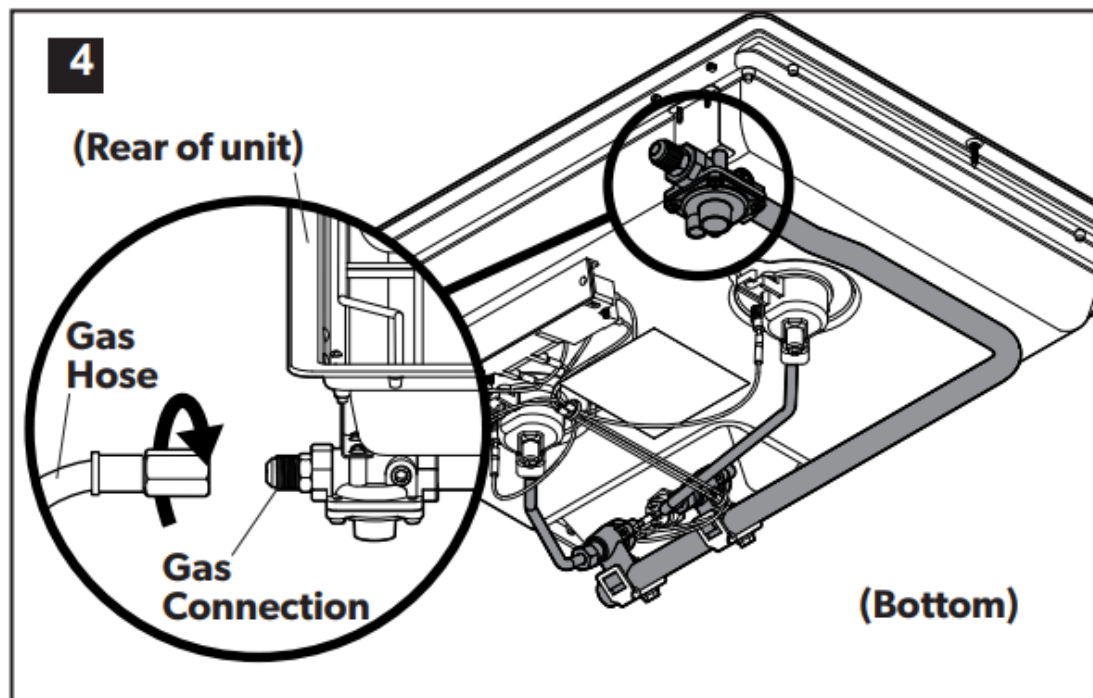
➤ Verify the Cooktop is level from side to side and front to rear.

➤ Tighten the screws to secure the Cooktop to the countertop using a #2 screwdriver. Do not overtighten.



Do not store the Cooktop outside .

4.3 Connecting the propane gas

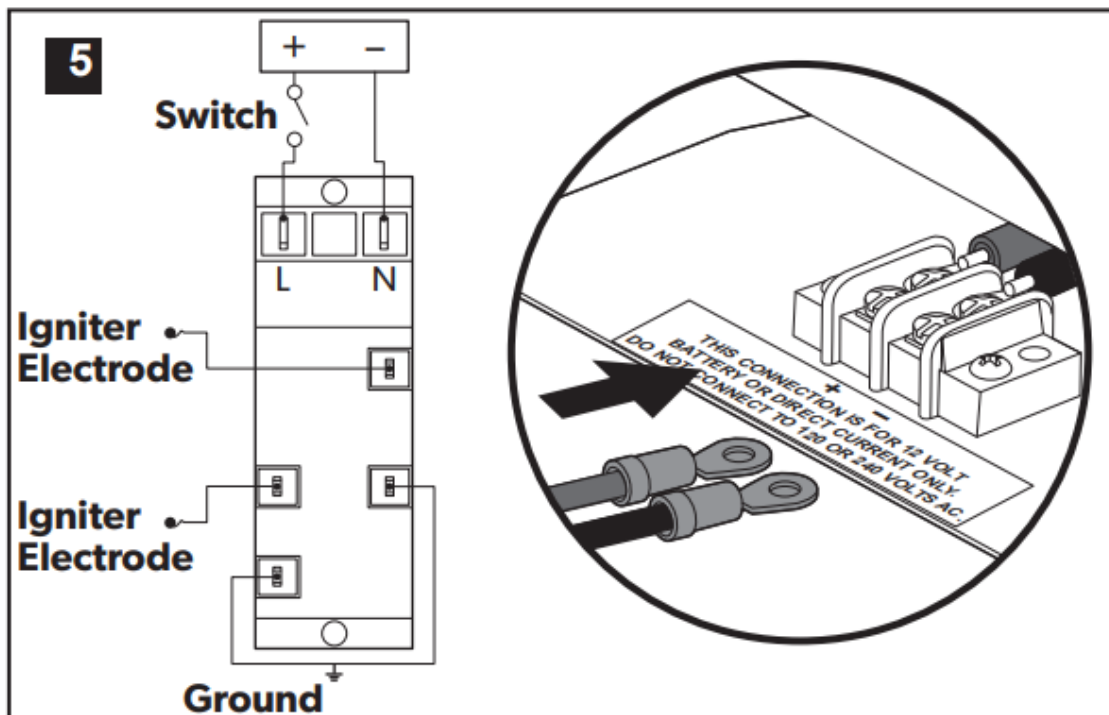


➤ Run a propane-certified hose from the propane supply tank to the gas connection on the Cooktop.

➤ Tighten according to appropriate RV and gas codes . Use two wrenches when tightening. Hold regulator in place while tightening hos.

- Turn ON the gas supply by turning the gas shutoff valve on the tank counterclockwise.
- Check for leaks using a non-corrosive leak detection fluid . Leak test pressures in excess of 13 .9" W .C . (1/2 psi) of air pressure will invalidate the warranty.
- After confirming there are no leaks, turn OFF the gas supply by turning the gas shut-off valve on the tank clockwise.

4.4 Connecting the 12 V ignition



- Connect the positive and negative wires to the terminal block on the back of the Cooktop. Connecting the wires to the wrong terminal will cause the igniter not to operate and can damage the ignition coil. For 12 V circuits only. Connecting to a higher voltage circuit can cause ignition coil damage

OPERATION

5.1 Operating/safety guidelines

⚠ WARNING BURN HAZARD, FIRE, EXPLOSION, AND/OR CARBON MONOXIDE HAZARD Failure to obey the following warnings could result in damage, a burn hazard, possible explosion, carbon monoxide buildup, serious injury, or death:

- Avoid negative draft or positive draft situations or the operation of this Cooktop during excessively windy conditions. Negative draft caused by air moving across the Cooktop may blow out the burner flame or move the flame into the Cooktop, resulting in damage, a burn hazard, possible explosion, carbon monoxide buildup, injury, or death . Do not operate the Cooktop in excessively windy conditions as this may cause a negative or positive draft. Doing so may blow out the top burner flame during use, and can result in an explosion, fire hazard, injury, or death .
- The Cooktop must be completely separated and/or sealed from other air moving or air-consuming devices such as, but not limited to, furnaces, microwave ovens, clothes dryers, cooling fans, and doors or drawers in common cabinets . Failure to do so can affect the appliance(s) combustion air supply by creating either a negative or positive draft, which can result in serious injury or death.
- Do not use the Cooktop for space heating. Doing so may cause overheating of the Cooktop and/or could cause carbon monoxide poisoning, resulting in serious injury or death.
- While operating the Cooktop, frequently check the temperature of contents within cabinet areas above the

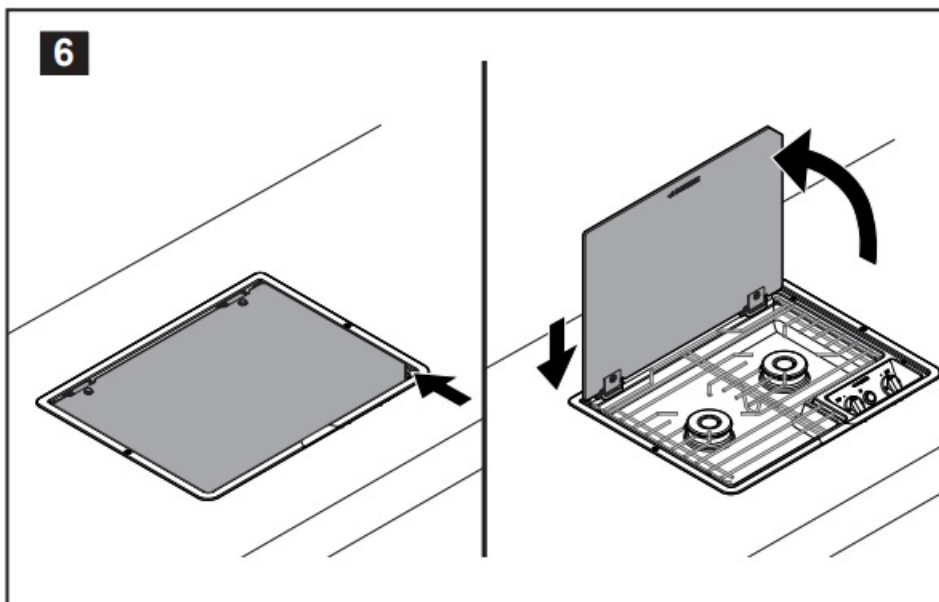
Cooktop. Do not store flammable or combustible material in cabinets above, or above and adjacent to, the Cooktop. Failure to follow this instruction could result in a fire, serious injury, or death.

- Do not heat unopened containers . They could explode . The hot contents may cause burns and container particles may cause injury.
- Do not store flammable materials on, in, or near Cooktop . Any fumes can create an explosion and/or fire hazard.
- Do not operate Cooktop if it is damaged or not working properly.
- Verify sufficient gas supply before attempting to light any burner. Air in the gas supply line will significantly delay burner ignition, and a burner may light unexpectedly as the air in the line clears out and is replaced by LP gas; this unexpected ignition may burn you . Air may be introduced into the supply line when the vehicle gas bottle is replaced, during servicing of other gas appliances, etc.
- If any burner should extinguish (after initially lighting or due to accidental blowout), turn all burner knobs clockwise to OFF and WAIT 5 MINUTES before attempting to re-light the burner .
- Do not touch burners, burner grates, or areas near burners during and after use . Do not let clothing or other flammable materials contact burners or areas near burners until these areas have had sufficient time to cool .
- Use large enough pans to cover the burner area and contain the cooked food . This will reduce or eliminate heavy splattering or spills that can ignite and burn you .
- Be sure that glass cooking utensils are safe for use on the Cooktop. Only certain kinds of glass utensils are suitable for surface or burner use without breaking due to sudden changes in temperature.
- Never leave burners unattended when in use, as pan contents may boil over, resulting in smoke or a grease spill that may ignite .
- Turn pan handles inward, but not over other top burners . This reduces the chance of burns due to bumping a pan .
- Because grease is flammable, never allow grease to collect around top burners or on the Cooktop surface. Wipe up any grease spills immediately.
- Never use water on grease fires, and never pick up a flaming pan. Smother a flaming pan with a tightfitting lid or cookie sheet. Flaming grease outside of the pan can be extinguished with baking soda or a multipurpose dry chemical or foam-type fire extinguisher.
- Use care when lighting a burner by hand . If the burner lights unexpectedly, or your hand is close to the burner, you may be burned.
- Burner flame should not extend beyond the edge of the cooking utensil . The flame could burn you and cause poor cooking results.
- Control knobs must be turned OFF when not cooking . Someone could be burned or a fire may start if a burner is accidentally left ON.

5.2 Operating your cover

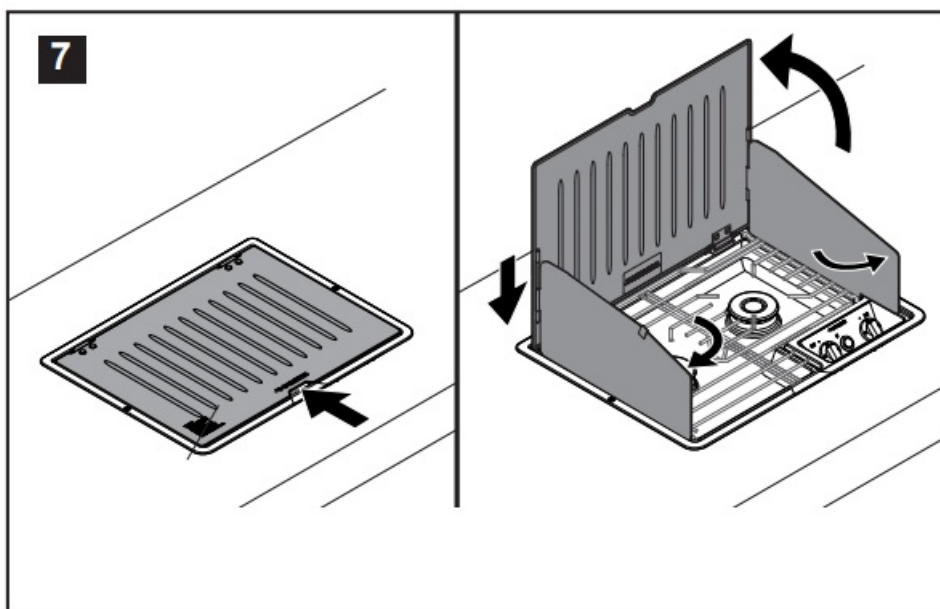
This section describes how to open and close the glass and metal covers on the Cooktop. The glass cover is preinstalled on the SECG model and the metal cover is preinstalled on the BPWM models . Covers are available as accessories for all other models.

Opening the glass cover



► Lift the Cover from the corner slot . Raise it completely, then gently lower the Cover down to rest on the back of the Cooktop.

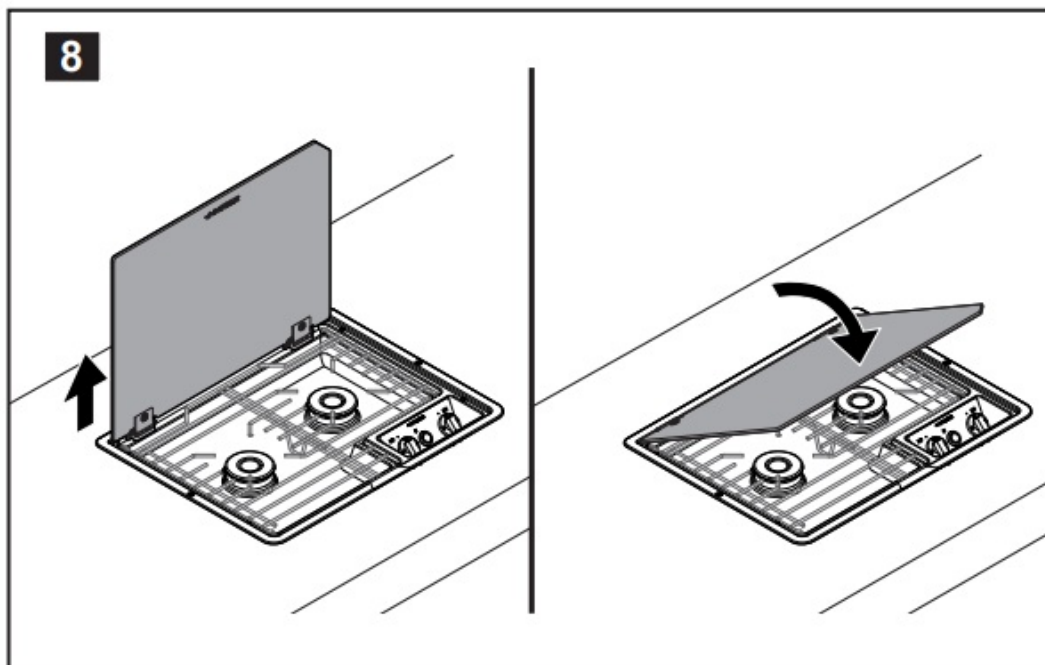
Opening the metal cover



► Lift the Cover from the center slot . Raise it completely, then gently lower the Cover down to lock into the back of the Cooktop.

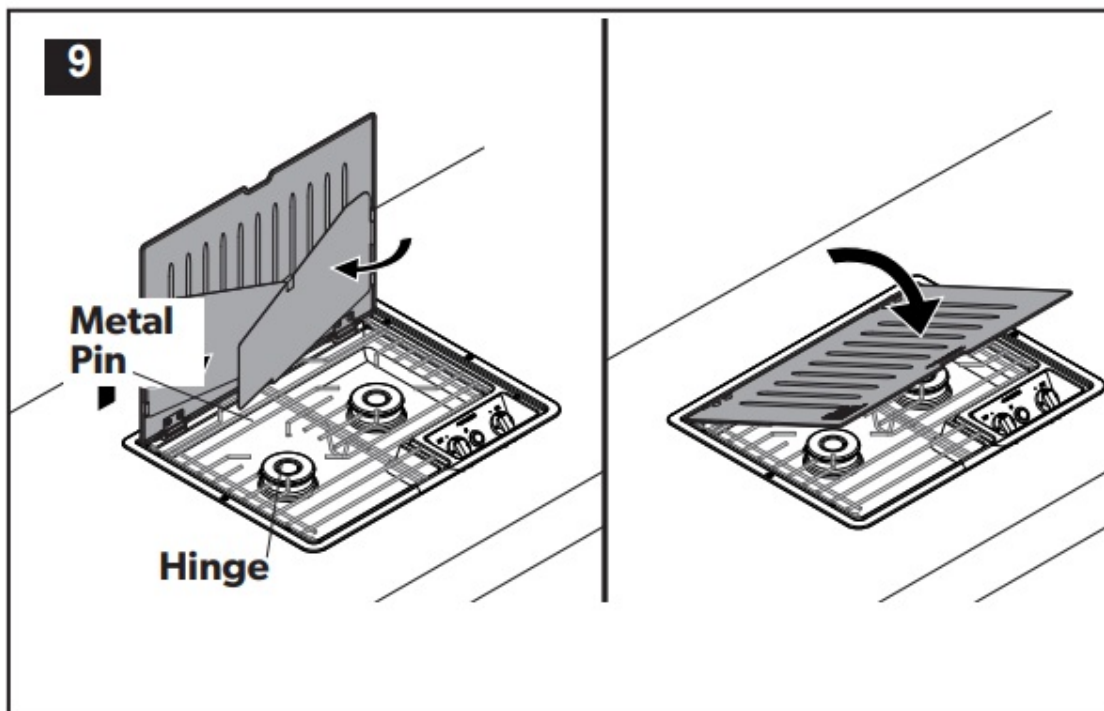
► Unclip the wind guards, open them, and lower them into position between the Cooktop and the grate.

Closing the glass cover



► Lift the Cover up, then gently lower it down onto the Cooktop .

Closing the metal cover



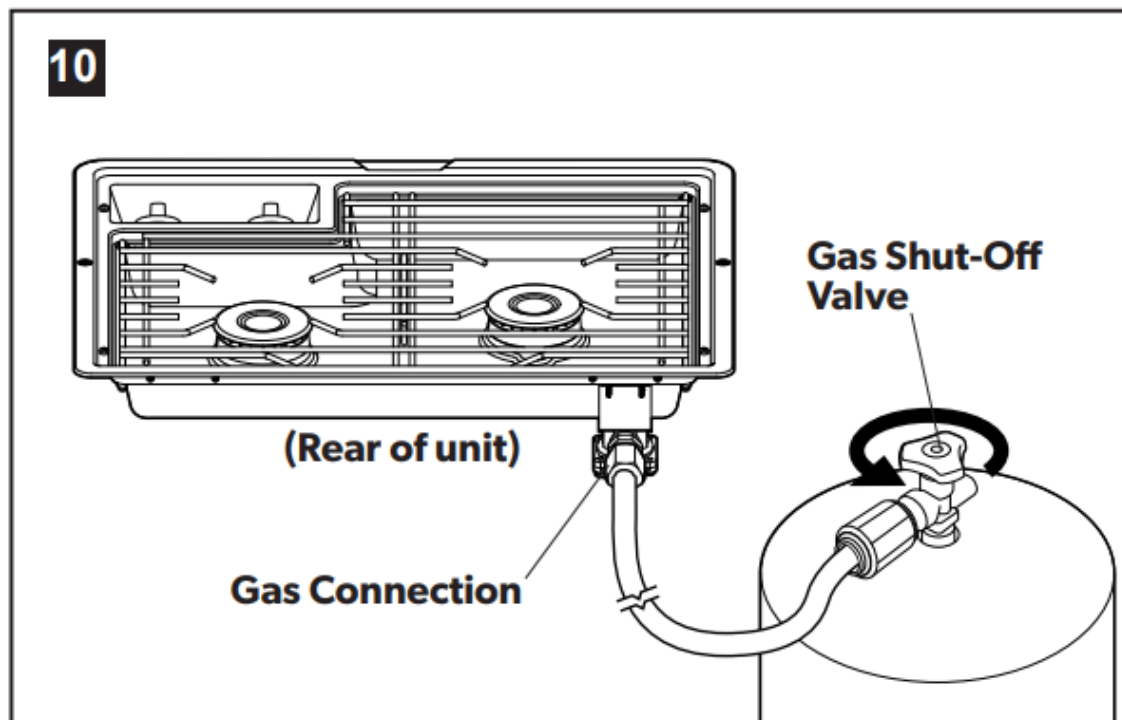
► Fold the wind guards, clip them together, and lift them up.

► Lift up the Cover, then gently lower it down onto the Cooktop.

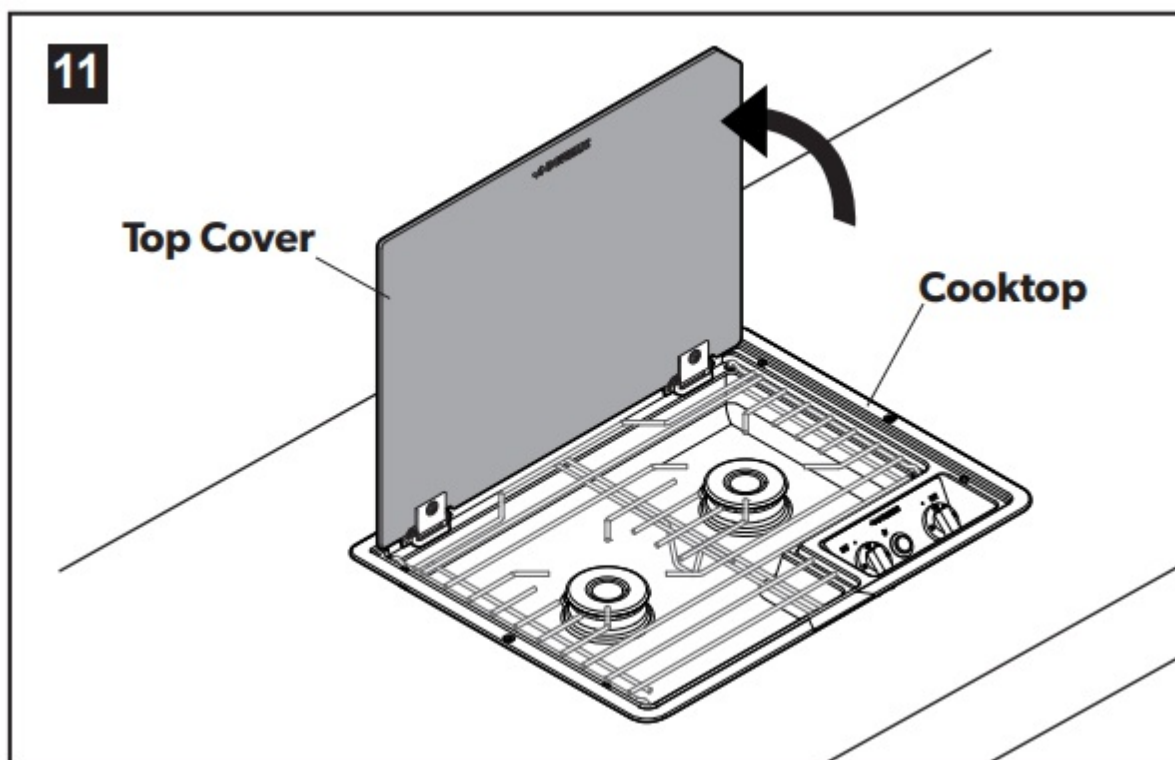
5.3 Preparing your cooktop for use

NOTICE

Glass can be easily scratched . Use care when setting items on the top of the cover. Avoid sliding items across the cover. Do not drop objects onto the cover, as this may cause breakage.



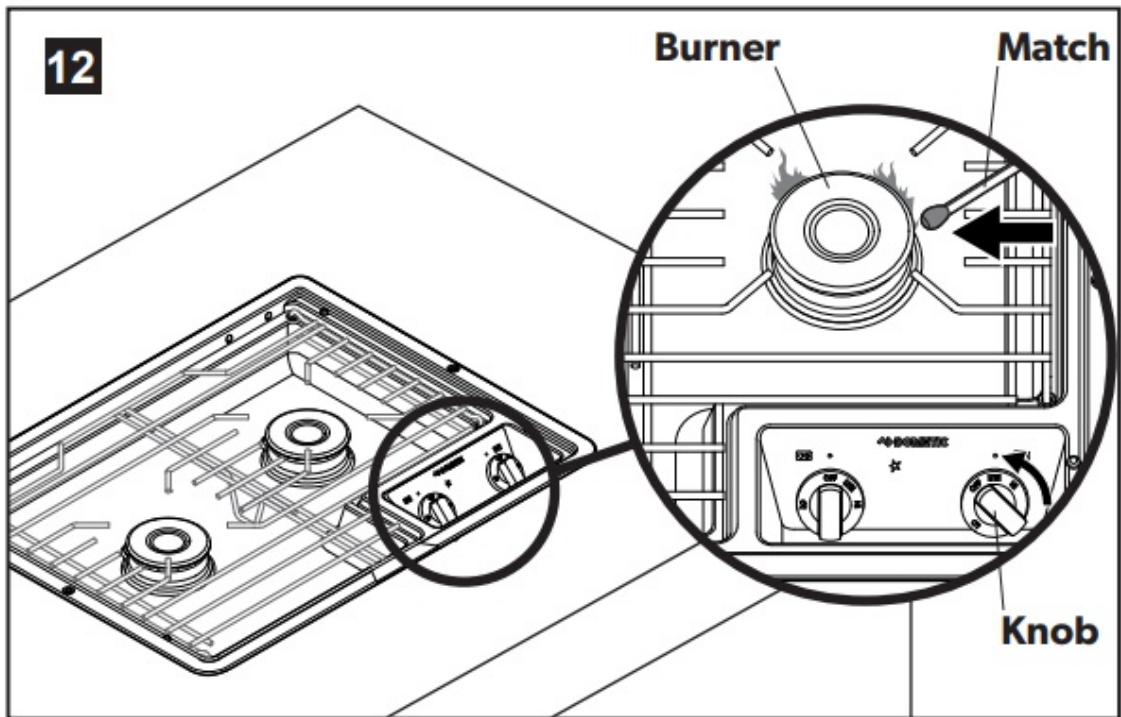
- Turn the gas ON at the gas shut-off valve (counterclockwise).



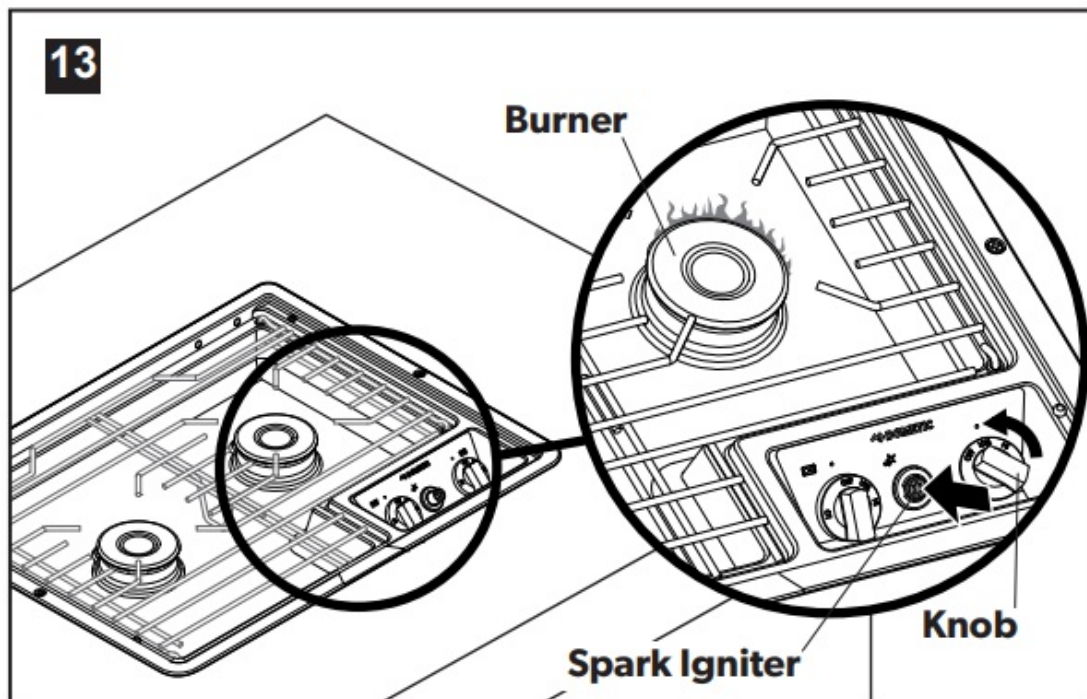
If your Cooktop is equipped with a top cover, lift the top cover when operating the Cooktop . See “5 .2 Operating your cover” on page 9 .

5.4 Lighting the burner

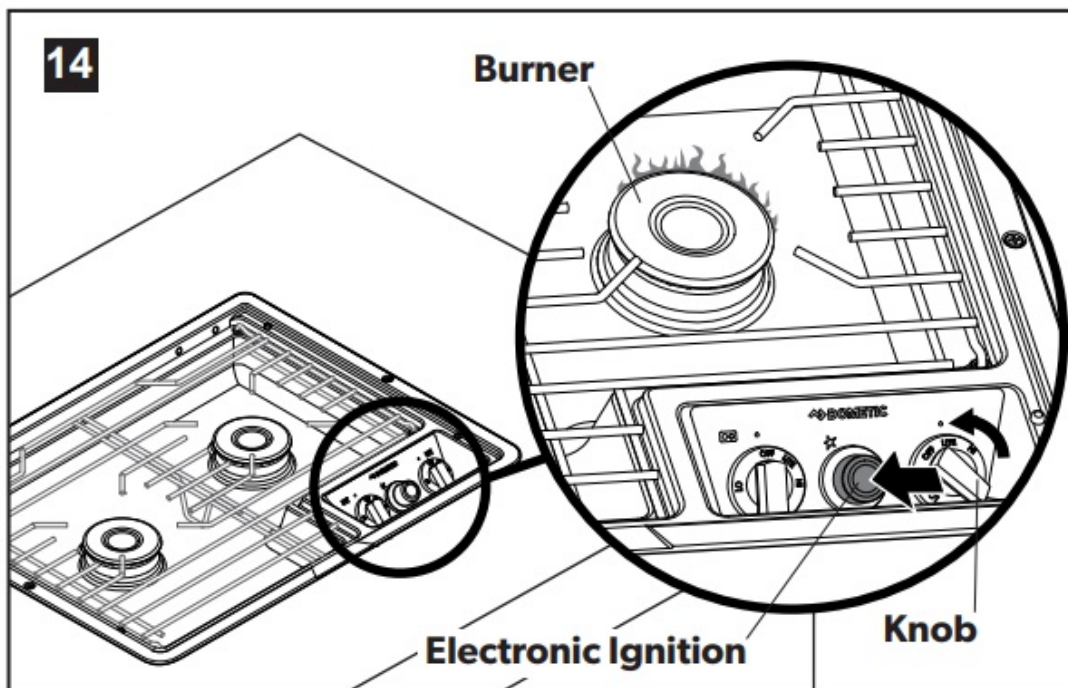
All burner controls operate counterclockwise and must be pressed inward when turning to light. Do not attempt to light more than one burner at a time .



► To light the Cooktop with a match, turn the knob counterclockwise and IMMEDIATELY hold a lit match near the burner.

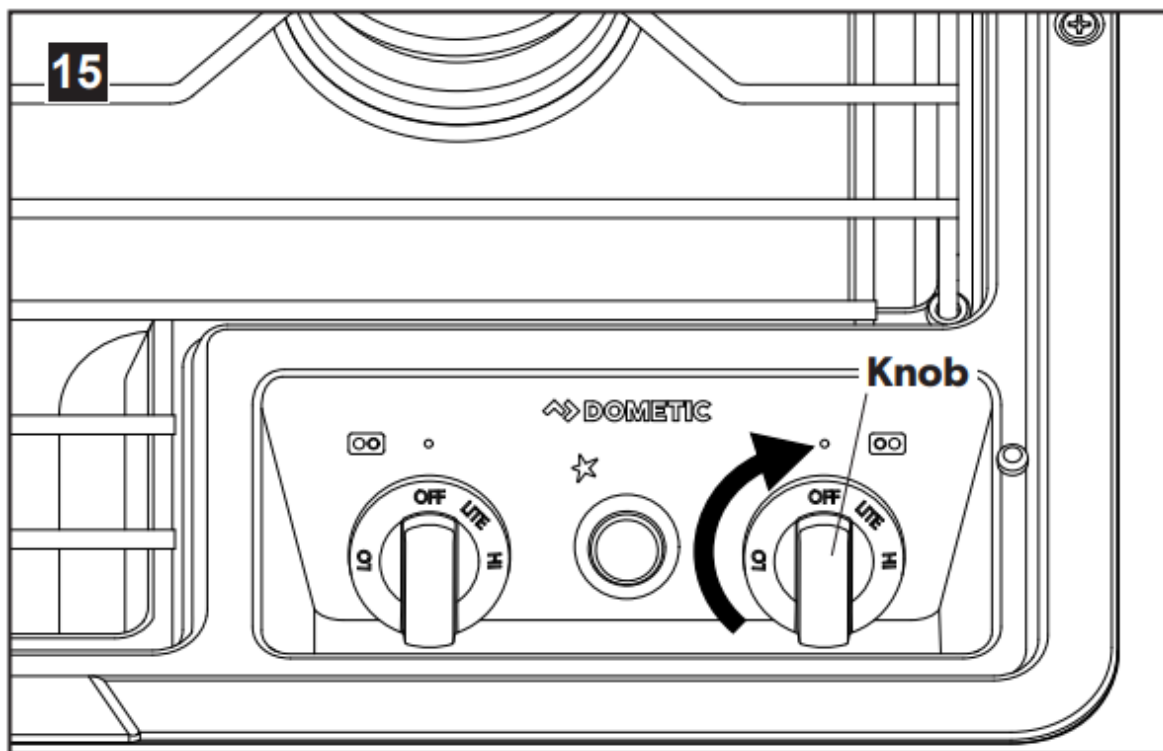


► To light the Cooktop using a spark igniter, turn the knob counterclockwise and press the spark igniter button until it clicks and the burner ignites.



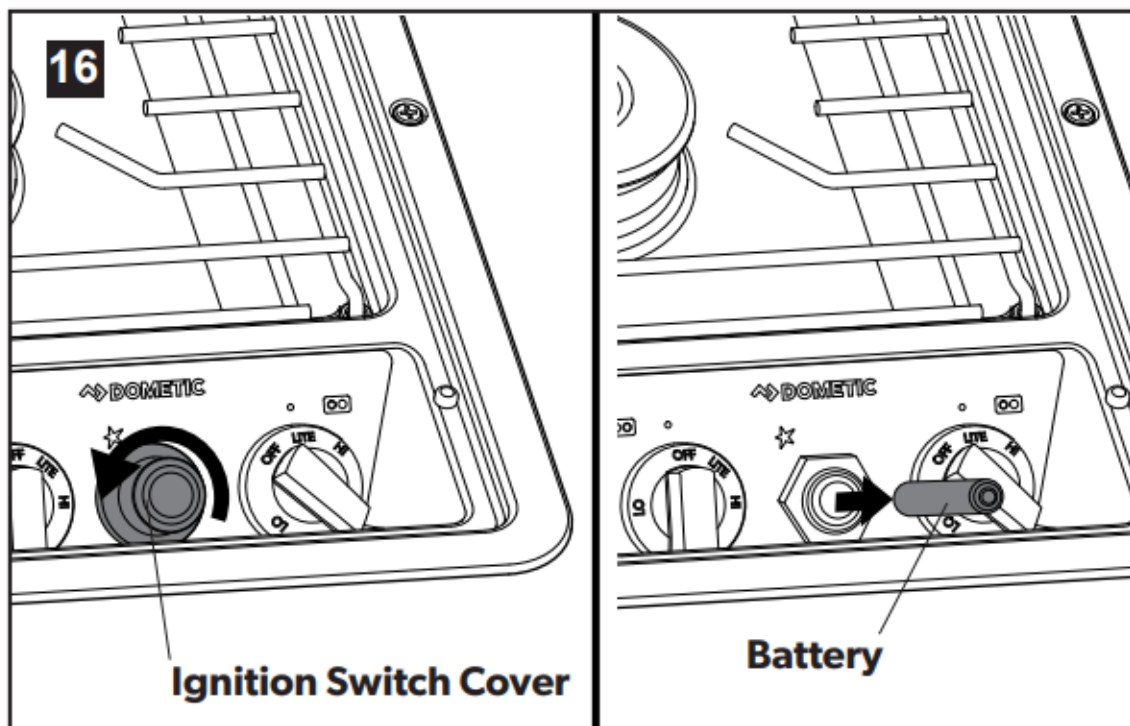
► To light the Cooktop using the electronic ignition, turn the knob counterclockwise, then press and hold the electronic ignition button until the burner lights.

5.5 Extinguishing the burner



► To extinguish the burner, turn the knob to the “OFF” position to stop the flow of gas to the burner.

5.6 Changing the battery (battery ignition)



- Unscrew the ignition switch cover.
- Remove and replace the AAA battery.

MAINTENANCE, CLEANING, AND STORAGE

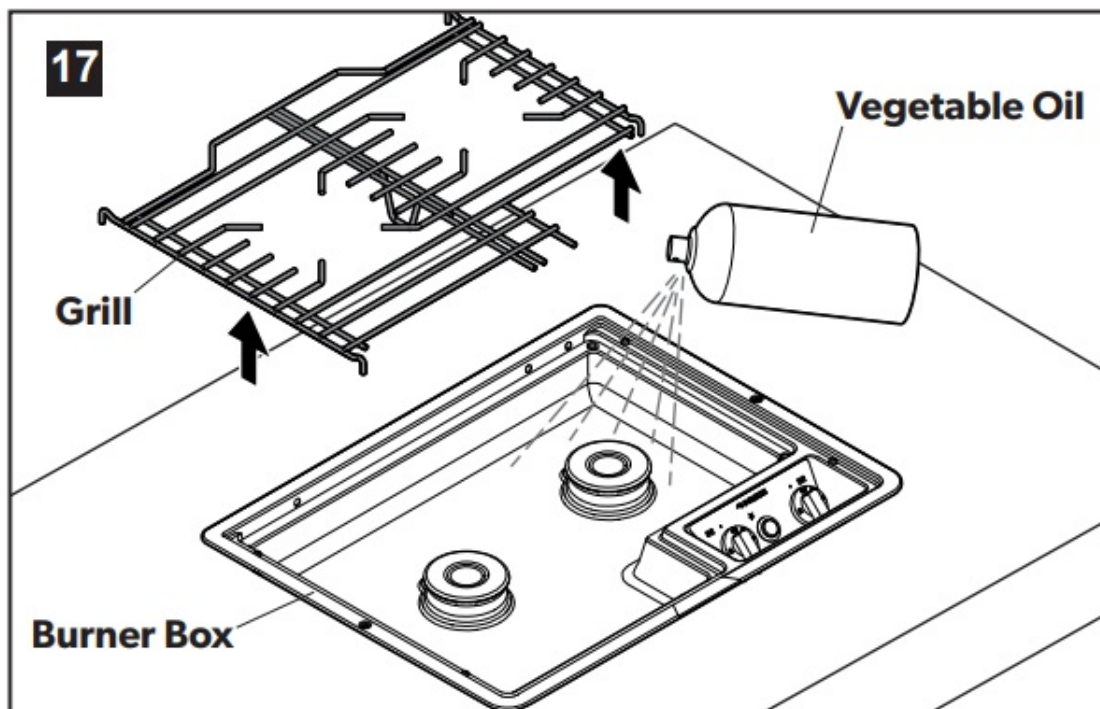
⚠ WARNING BURN HAZARD, FIRE, EXPLOSION, AND/OR CARBON MONOXIDE HAZARD . Keep Cooktop area clear of combustible cleaning materials, gasoline, and other flammable vapors and liquids . Failure to obey this warning could result in damage, a burn hazard, possible explosion, carbon monoxide buildup, serious injury, or death.

⚠ CAUTION Failure to obey the following cautions could result in damage or injury:

- All Cooktop surfaces, burner grates, and burners must be cool before cleaning or disassembling the Cooktop.
- Clean all surfaces quickly after spills.
- Use warm soapy water only to clean the burner grates, burner box, painted surfaces, porcelain surfaces, stainless steel surfaces, and plastic items on your Cooktop. Do not use gritty or acid-type cleaners. Do not use steel wool or abrasive cleaners, as they will damage your Cooktop. Use only non-abrasive plastic scrubbing pads.
- Do not allow foods containing acids (such as lemon juice, tomato juice, or vinegar) to remain on porcelain or painted surfaces . Acids may remove the glossy finish. Pitting and discoloration will result if spills are allowed to remain for any length of time on stainless steel . Do not allow spills to remain on burner caps. Caps could be permanently stained if spills are not cleaned up promptly.

i Proper installation and care will help keep your Cooktop looking and operating like new. Most cleaning can be performed using normal household items.

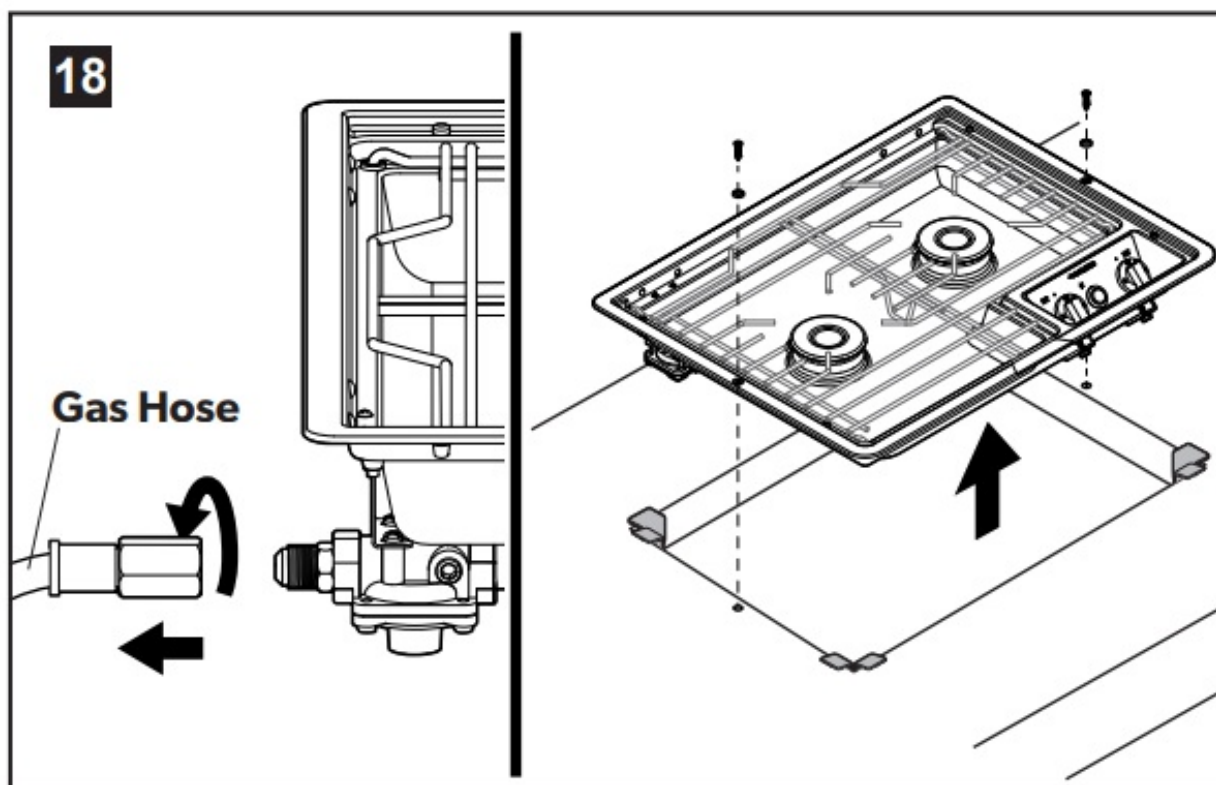
6.1 Cleaning your cooktop



- Remove the grill from the Cooktop.
- Dry all surfaces and the burner box then spray surfaces with vegetable oil or a similar product to help prevent the surface from rusting during storage.

i Clean oil off of the surface of the Cooktop before reinstalling and operating the Cooktop.

6.2 Storing your cooktop



i Refer to your installation manual for additional detail and safety messaging.

- Disconnect the gas hose from the Cooktop.
- Remove the screws securing the Cooktop and lift the Cooktop out of the cutout.
- Pack the Cooktop in its original packaging, or other suitable materials, to protect it from damage.

DISPOSAL

Place packaging material only in the appropriate recycling waste bins, whenever possible. Do not dispose of the range or slide-in without consulting a local recycling center or specialist dealer for details about how to dispose of the range or slide-in in accordance with the applicable national and local regulations.

REPLACEMENT PARTS



WARNING BURN HAZARD, FIRE, EXPLOSION, AND/OR CARBON MONOXIDE HAZARD. Use only Dometic replacement parts and components, which are specifically approved for use with the Drop-In Cooktop . Failure to obey this warning could result in damage, a burn hazard, possible explosion, carbon monoxide buildup, serious injury, or death. For the most current parts information, visit www.eDometic.com.

LIMITED TWO-YEAR WARRANTY

LIMITED TWO-YEAR WARRANTY AVAILABLE AT WWW.DOMETIC.COM/WARRANTY . IF YOU HAVE QUESTIONS, OR TO OBTAIN A COPY OF THE LIMITED WARRANTY FREE OF CHARGE, CONTACT:



DOMETIC CORPORATION
CUSTOMER SUPPORT CENTER
1120 NORTH MAIN STREET
ELKHART, INDIANA, USA 46514
1-800-544-4881 OPT


dometic.com

YOUR LOCAL DEALER dometic.com/dealer




YOUR LOCAL SUPPORT dometic.com/contact

YOUR LOCAL SALES OFFICE dometic.com/sales-offices

Documents / Resources

	<p>DOMETIC D21 Drop In Cooktop [pdf] User Manual D21, Drop In Cooktop, D21 Drop In Cooktop, Cooktop</p>
---	---

References

-  [Dometic Outdoor USA - Compact solutions for Outdoor living | Dometic.com](#)
-  [Contact Us | Dometic.com](#)
-  [Find a Dealer | Dometic.com](#)