



DOMETIC CA67869P Series Control Rebuild Kit Instruction Manual

[Home](#) » [Dometic](#) » DOMETIC CA67869P Series Control Rebuild Kit Instruction Manual 



Contents

- [1 CA67869P Series Control Rebuild Kit](#)
- [2 Tools required](#)
- [3 S Series housing kit](#)
- [4 S Series handle kit](#)
- [5 S Series hardware replacement kit](#)
- [6 Parts illustration](#)
- [7 Documents / Resources](#)
 - [7.1 References](#)

CA67869P Series Control Rebuild Kit



NOTICE!

Installer: these instructions contain important safety information and must be forwarded to the boat owner.



WARNING!

This control must be entirely disassembled and re-assembled to install contents of these kits. Because proper assembly and cable adjustment is so important to the boat's performance, we recommend this conversion be completed by a boat dealer or boat repair facility. In all cases, remove cables from control first.

Tools required

- Multi purpose marine grease to coat Nyliner bearing(s)

- Low strength thread-locker to coat threads of item 10 on re-assembly
- Philips head screwdriver
- Slotted head screwdriver
- Allen wrench 4 mm
- Torque wrench

S Series housing kit

Remove in order:

- Items 12, 13, 14, 15 to remove control from dash.
- Item 23.
- Item 20. Handle will pull out.
- Item 18.
- Items 17 & 28. Lower frame housing will be isolated.
- Items 10.
- Item 22 from housing.

Reassemble in reverse order.

Torque side screws, item 17, to 25–32 in. lb.

Item No.	Description	Single S Control	Twin S Control
		CA67864P	CA67865P
16	Housing	1	1
22	Bearing	1	2
9	Top Plate	1	1
8	Plate Screws	2	2
17	Side Screws	2	4
28	Side Washers	2	4
23	Tapered Screw	1	2
	Instruction	1	1

S Series handle kit

Remove in order:

- Items 12, 13, 14, 15 to remove control from dash.
- Item 23.
- Item 20. Handle will pull out.
- Item 18.
- Item 17 & item 28.
- Lower frame.
- Item 22 from item 16.

Reassemble in reverse order.

Item No	Description	Single S Control	Twin S Control
		CA67866P	A67867P
20	Handle	1	2
18	Brake Pin	1	1
21	Detent Screw	1	2
11	Brake Screw	1	2
22	Nyliner Bearing	1	2
22	Tapered Screw	1	2
23	Red Knob	1	1
19	Black Knob	1	1
19	Instruction	1	1

S Series hardware replacement kit

Remove in order:

- Items 12, 13, 14, 15 to remove control from dash.
- Item 23.
- Item 20. Handle will pull out.
- Item 18.
- Item 17 & item 28.
- Lower frame.
- Item 22 from item 16.

Reassemble in reverse order.

Torque side screws, item 17, to 25–32 in. lb.

Item No	Description	Single S Control	Twin S Control
		CA67868P	A67869P
1	Cotter Pin	1	2
2	Cable Pivot	1	2
4	Shim	1	2
5	Clamp	1	2
7	Screw	2	4
11	Brake Screw	1	2
12	Mounting Screw	4	4
13	Flat Washer	4	4
15	Spring Washer	4	4
15	Nut	4	4
17	Side Screw	2	4
18	Brake Pin	1	1
21	Detent Screw	1	2
22	Nyliner Bearing	1	2
22	Nut	2	4
27	Side Washer	2	4
28	Instruction	1	1

Parts illustration

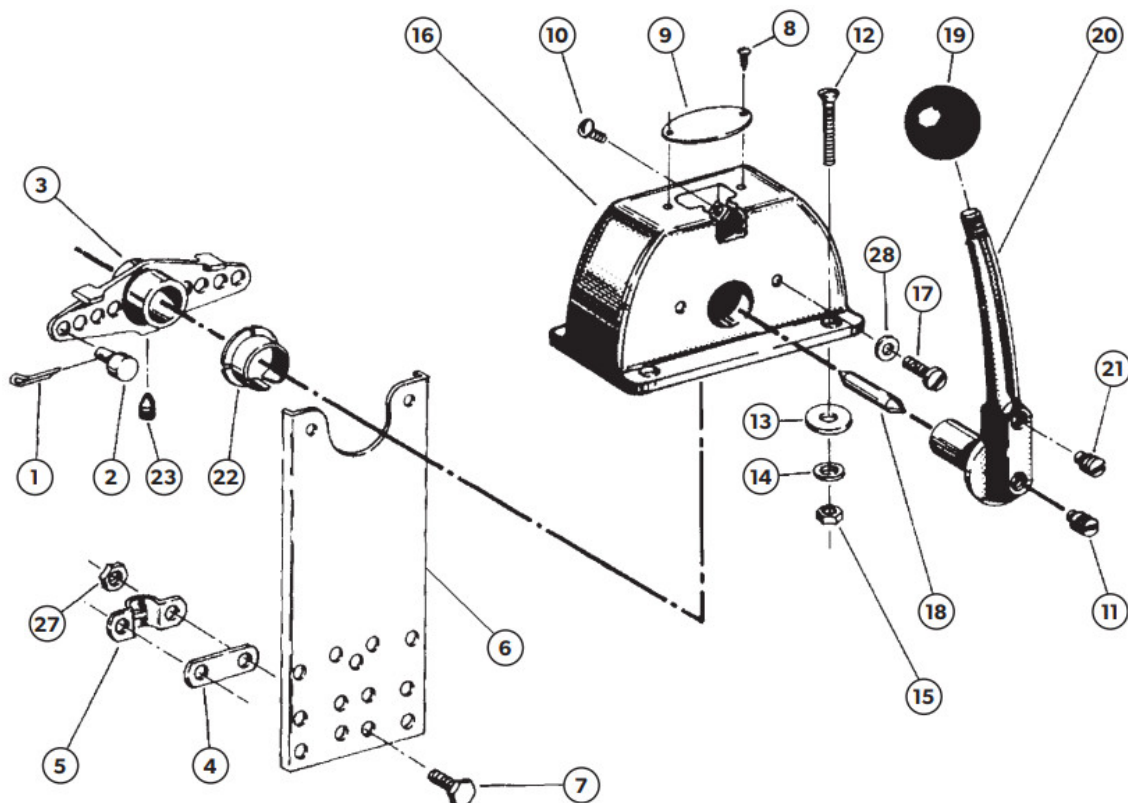


Figure 1.



Copy Part# IS-67863, Rev. 9

Date: 05/2023



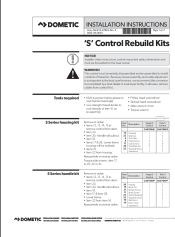
YOUR LOCAL DEALER

dometic.com/dealer
YOUR LOCAL SUPPORT
dometic.com/contact
YOUR LOCAL SALES OFFICE
dometic.com/sales-offices

A complete list of Dometic companies, which comprise the Dometic Group, can be found in the public filings of:

DOMETIC GROUP AB
DOMETIC GROUP AB Hemvärnsgatan 15 SE-17154 Solna Sweden
4445104071 IS-67863

Documents / Resources

	<p>DOMETIC CA67869P Series Control Rebuild Kit [pdf] Instruction Manual CA67864P, CA67865P, CA67866P, CA67867P, CA67868P, CA67869P, CA67869P Series Control Rebuild Kit, CA67869P Series, Control Rebuild Kit, Rebuild Kit, Kit</p>
---	--

References

- [User Manual](#)