



## DOMETIC CA27328P Dual Connection Throttle and Shift Kit Instruction Manual

[Home](#) » [Dometic](#) » DOMETIC CA27328P Dual Connection Throttle and Shift Kit Instruction Manual 

### DOMETIC CA27328P Dual Connection Throttle and Shift Kit



## Contents

- [1 Important Information](#)
- [2 Installation](#)
- [3 Final adjustment](#)
- [4 Customer Support](#)
- [5 Documents / Resources](#)
  - [5.1 References](#)
- [6 Related Posts](#)

## Important Information



### NOTICE!

Installer: These instructions contain important safety information and must be forwarded to the boat owner.



### CAUTION!

Read these instructions thoroughly before proceeding with installation. Check contents of kit against parts list on this instruction sheet. Parts supplied must be used per instructions. Dometic cannot accept responsibility for the integrity of installations in which substitute parts are used.

Parts supplied in this kit are to be used to connect two 3300/33C type engine control cables (manufactured by Dometic) to a single throttle or shift arm on an inboard or I/O engine.

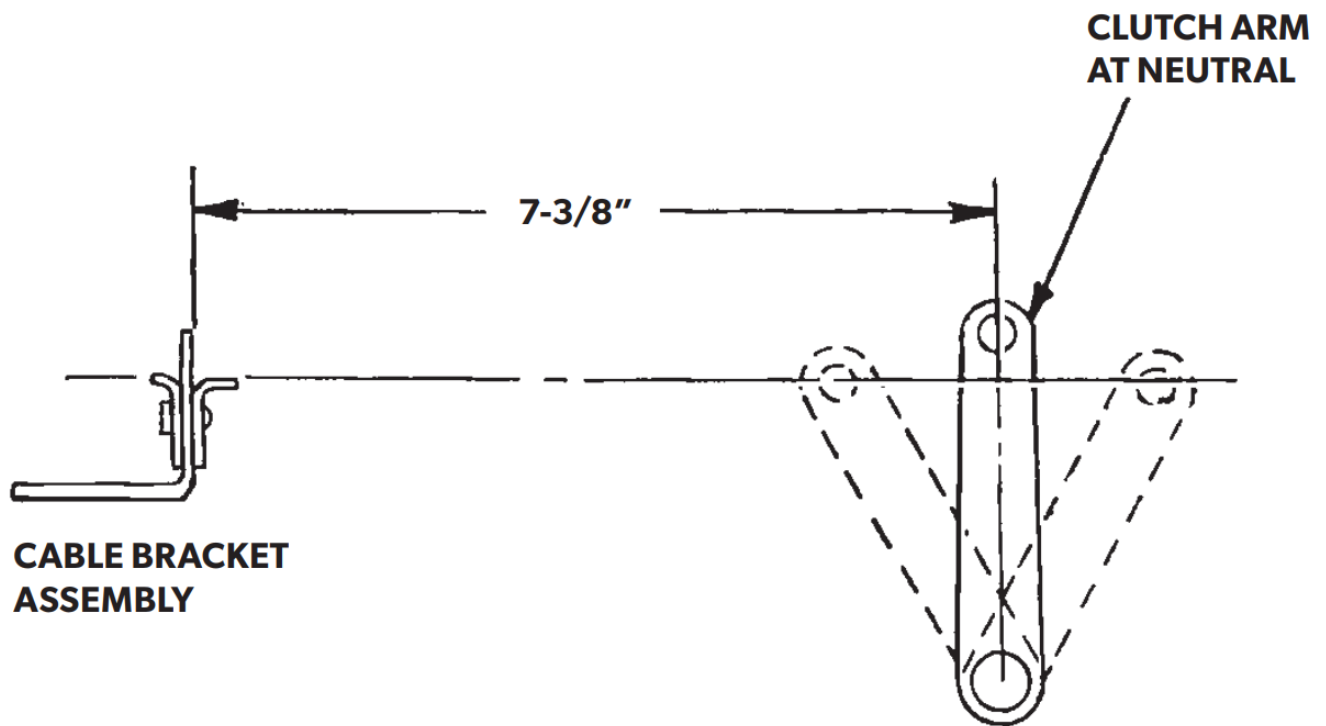


### NOTE

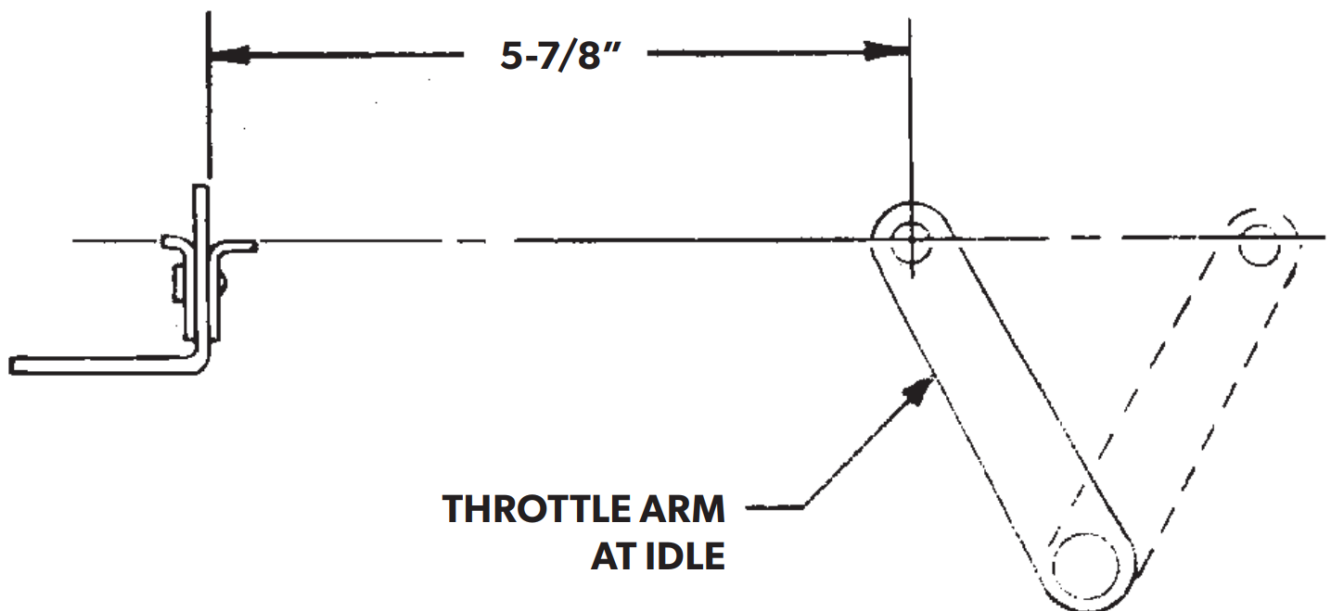
A support bracket similar to that shown in figure 4 must be supplied to provide a mounting surface for the cable bracket assembly. It must be constructed so that dimensions shown in figure 1, figure 2, or figure 3, may be maintained, and allow an unrestricted path for cable installation and operation.

Mounting dimensions shown are measured with the clutch arm in neutral position and the throttle arm in idle position.

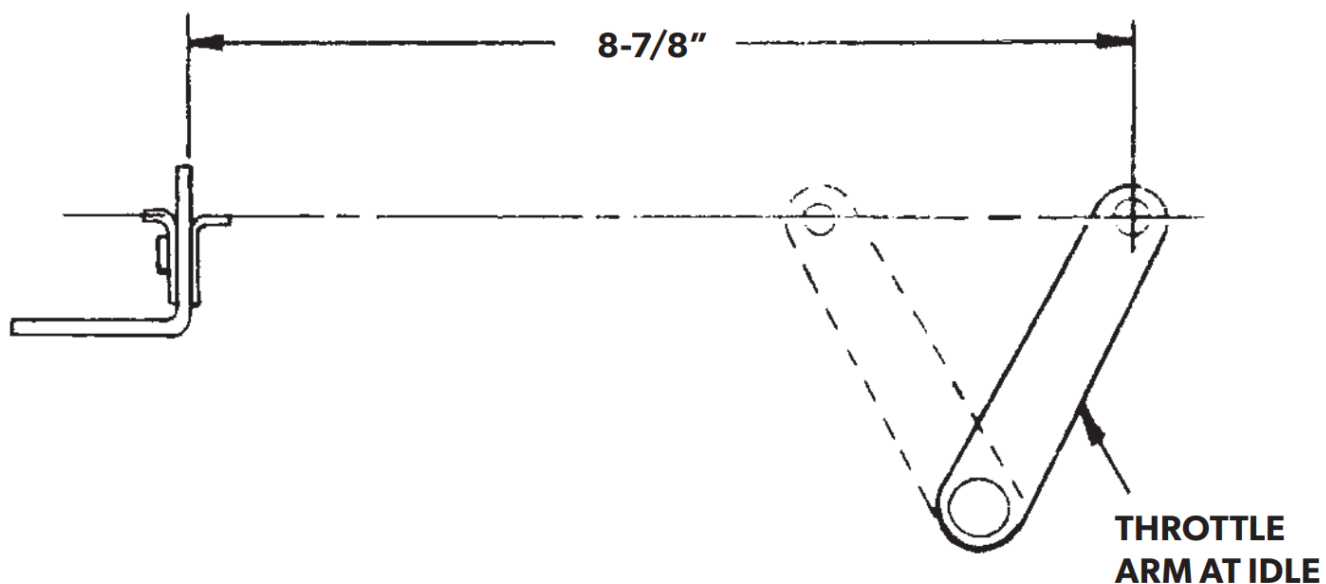
- **Figure 1. Shift cable installation**



- Figure 2. Push to open throttle cable installation.



- Figure 3. Pull to open throttle cable installation.



## Installation

1. Attach cable bracket assembly (item 1) to mounting bracket as shown in **figure 4**, using two each machine screws (item 2), lock washers (item 3) and hex. nuts (item 4). Tighten hardware securely.
2. Place cables into slots in cable bracket assembly and lock in place with clips as shown in **figure 4**.

Item No.	Description	Qty.
1	Cable Bracket Assembly	1
2	Machine Screw 10–24 x 3/4"	2
3	Lockwasher No. 10	2
4	Hex. Nut No. 10–24	2
5	Pivot Pin	1
6	Lock washer 1 /4"	1
7	Hex. Nut 1/4"–28	1
8	Cable Lug	2
9	Flat Washer 1/4" ID	1
10	Cotter Pin	1

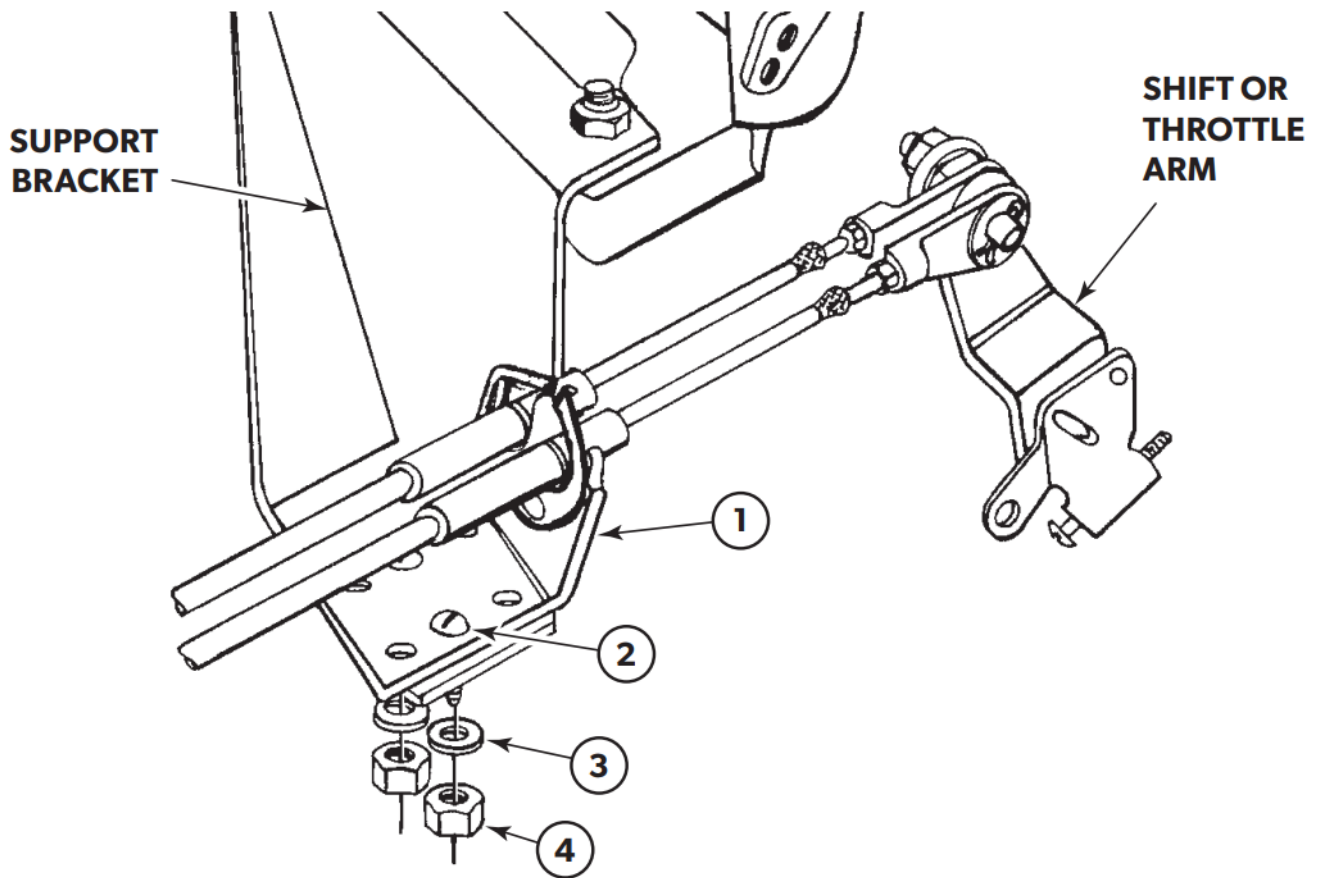


Figure 4.

3. Install pivot pin (item 5) through hole in shift or throttle arm and attach using lock washer (item 6) and hex. nut (item 7) as shown in **figure 5**. Tighten hardware securely.

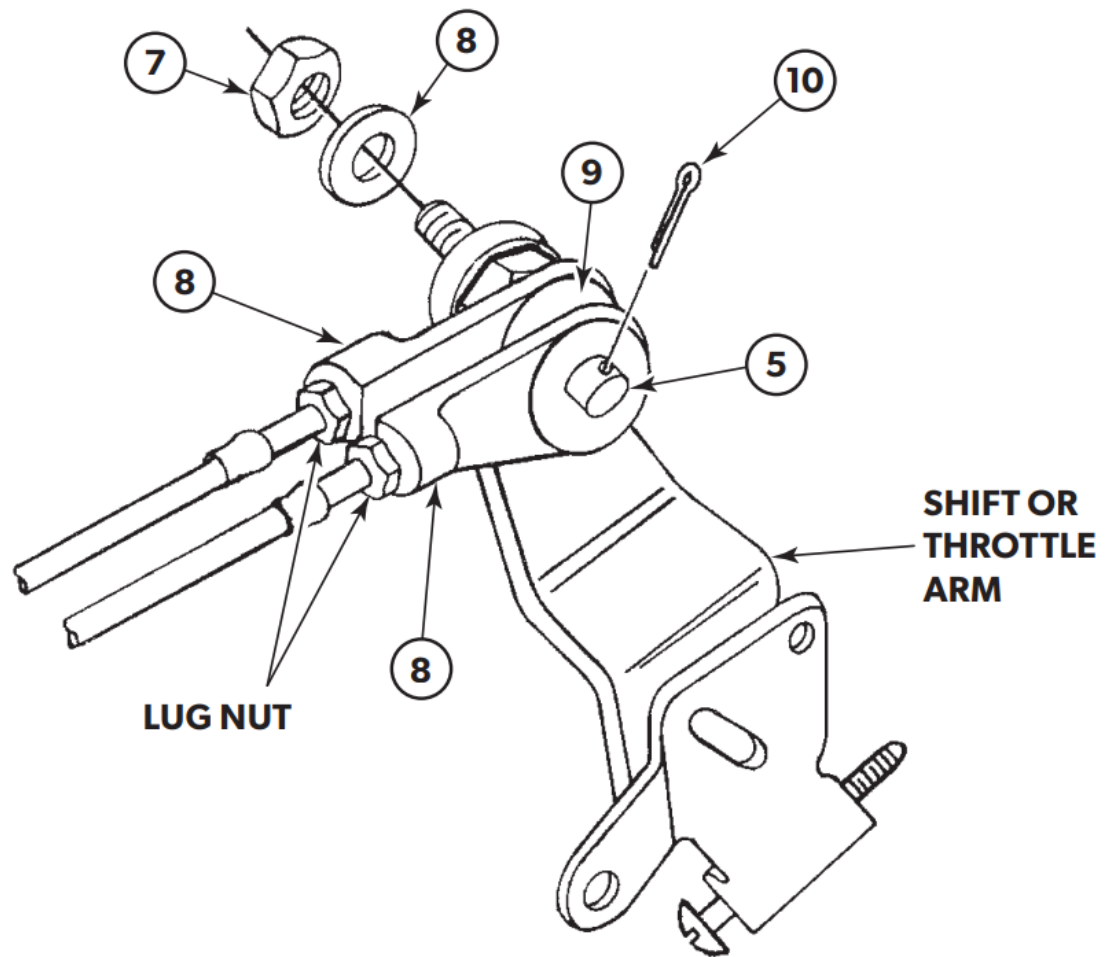


Figure 5.

### **i** NOTE

If throttle arm has a pivot pin installed, remove and replace with one supplied in this kit.

**For shift arm application:** Place control head shift lever in neutral position. Place engine shift arm in neutral position.

**For throttle arm application:** Place control head throttle lever in "idle" position. Place engine throttle arm in "idle" position.

4. Thread one cable lug (item 8) onto each cable end. Adjust by threading or unthreading until hole in cable lug will pass over pivot pin. Install in the position shown in **figure 5**, with flat washer (item 9) between cable lugs as shown.
5. Install cotter pin (item 10) through hole in pivot pin and spread tangs to lock into place.
6. Tighten cable terminal nuts (supplied with cables) securely against cable lugs.

### **Final adjustment**

For final adjustment and check-out procedures, refer to instructions supplied with control head assembly.

### **i** NOTE

Before operating boat, recheck all hardware for security and re-torque as necessary. The boat should be operated with caution until the engine control system has been thoroughly checked out under normal operating conditions to ensure that the installation is correct and functioning properly.

## Customer Support

A complete list of Dometic companies, which comprise the Dometic Group, can be found in the public filings of:  
**DOMETIC GROUP AB** Hemvärnsgatan 15 SE-17154 Solna Sweden

**YOUR LOCAL DEALER**

[dometic.com/dealer](https://dometic.com/dealer)

**YOUR LOCAL SUPPORT**

[dometic.com/contact](https://dometic.com/contact)

**YOUR LOCAL SALES OFFICE**

[dometic.com/sales-offices](https://dometic.com/sales-offices)



---

## Documents / Resources

	<p><a href="#">DOMETIC CA27328P Dual Connection Throttle and Shift Kit</a> [pdf] Instruction Manual SKI_4445104038_AMER_2023-08-18, CA27328P, CA27328P Dual Connection Throttle and Shift Kit, CA27328P, Dual Connection Throttle and Shift Kit, Connection Throttle and Shift Kit, Throttle and Shift Kit, and Shift Kit, Shift Kit</p>
---	--

## References

- [User Manual](#)

[Manuals+](#), [Privacy Policy](#)