



DOM Security Tronic Mifare Electronic Lock Instructions

[Home](#) » [DOM Security](#) » DOM Security Tronic Mifare Electronic Lock Instructions 

DOM Security Tronic Mifare Electronic Lock



Contents

- 1 [Tronic Mifare](#)
- 2 [Cards and functions](#)
 - 2.1 [Single user: Open and close](#)
 - 2.2 [Create and delete User Cards \(only for single user mode\)](#)
- 3 [Multiuser: Open and close](#)
- 4 [Create and delete Master Cards](#)
- 5 [Open using Master Card: Inspection mode](#)
- 6 [Delete all User Cards](#)
- 7 [Reset User Cards](#)
 - 7.1 [Programmable settings \(management software and cable required\)](#)
- 8 [Settings Card](#)
- 9 [Table Reader/Writer](#)
- 10 [Batteries replacement](#)
- 11 [Measurements](#)
- 12 [Warranty and liability](#)
- 13 [Copyright](#)
- 14 [Documentation Officer](#)
- 15 [Information available online](#)
- 16 [Documents / Resources](#)
 - 16.1 [References](#)
- 17 [Related Posts](#)

MANAGEMENT CARD



MASTER CARDS



USER CARDS



Cards and functions

MANAGEMENT CARD

Function:

Create and Delete Master Cards



MASTER CARD

Functions: Create / Delete User Cards (Single user only), Inspection mode and Delete User Cards



USER CARD

Functions: Open / Close locks



SETTINGS CARD

Transfer settings from software to locks

Modes : Multiuser (Public) /

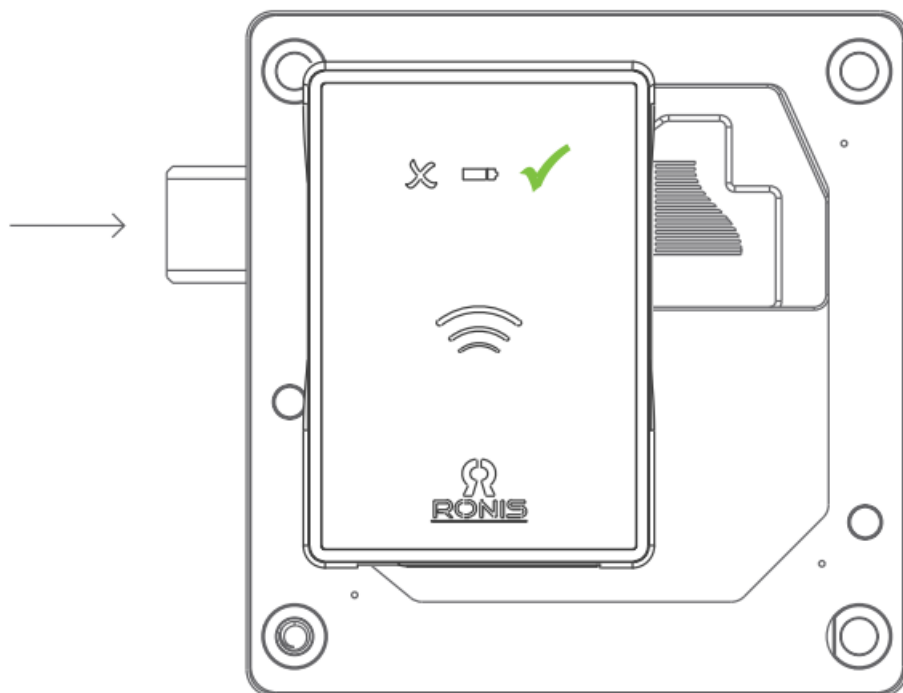
Single User (Private)

Acoustic signal

Automatic opening time



Single user: Open and close



SINGLE USER

- The lock is closed.
- Place the assigned User Card close to the lock. The lock will open.

- After 2 seconds the latch closes automatically.

OK: Green LED 1 long beep = the lock is closed

NOT OK: Red LED and 3 short beeps.

Create and delete User Cards (only for single user mode)



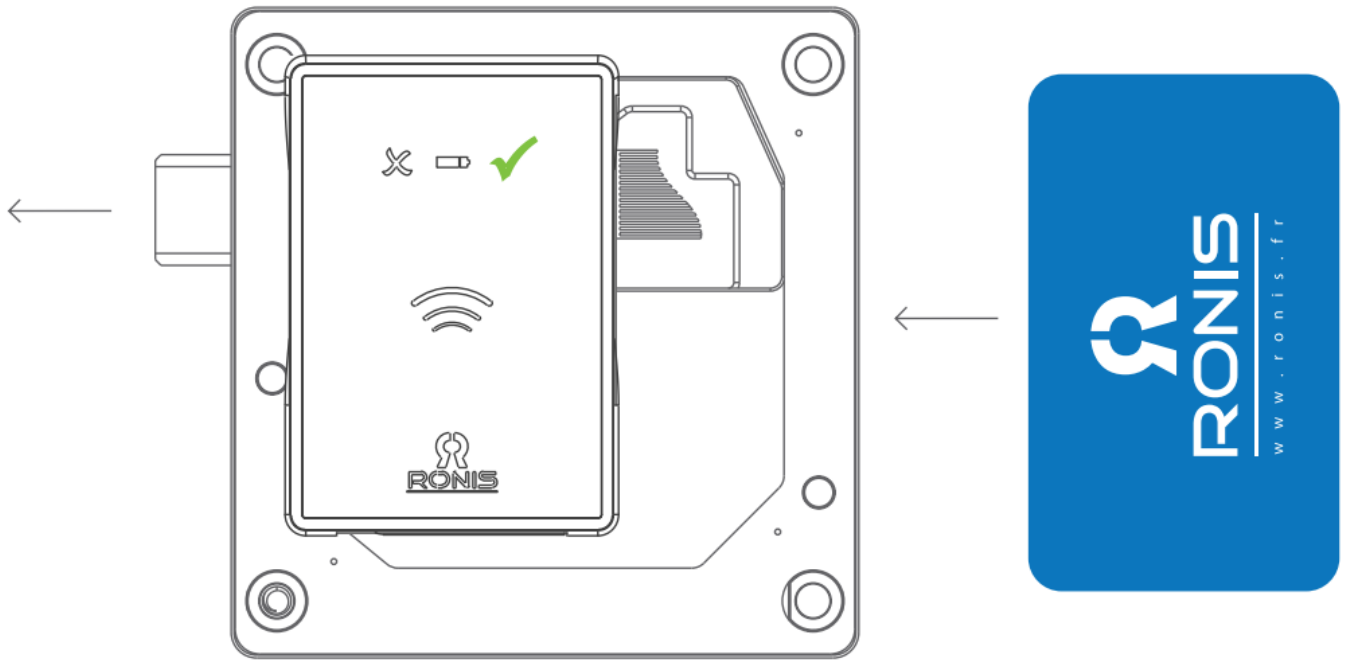
CREATE:

- Place the assigned Master Card close to the lock, followed by the new User Card.
- Up to 50 User Cards can be created per lock.
- Green LED and long beep = User Card created successfully.
- Red LED and 3 short beeps = User Card not created.

DELETE:

- Place the Master Card close to the lock, followed by the User Card.
- Green LED 2 fast blinks and 2 short beeps = User Card deleted.

Multiuser: Open and close



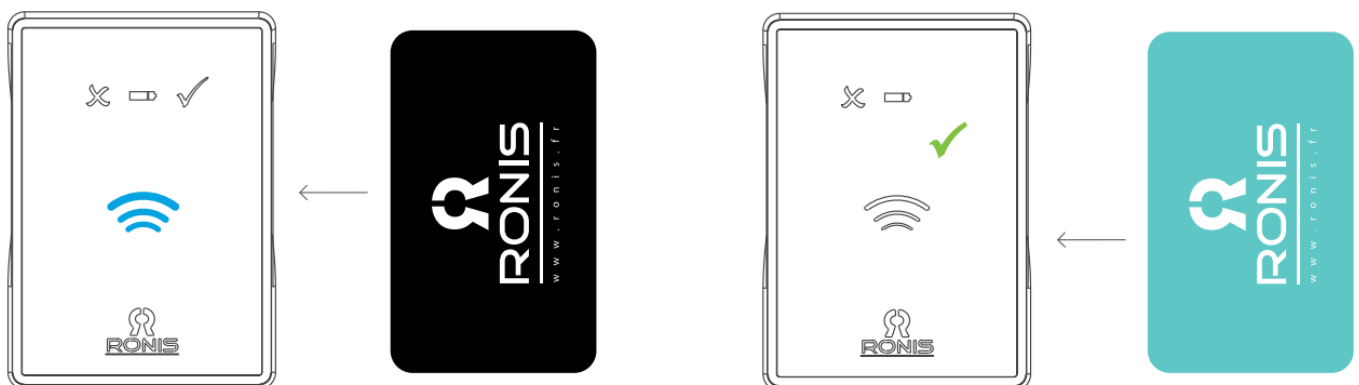
MULTIUSER

- The locker is open.
- Place a blank User Card close to the lock. The lock is now assigned to the card.
- If you present your card again the lock will open and reset for the next usage. (Same or different User card)

OK: Green LED 1 long beep = the lock will close

NOT OK: Red LED and 3 short beeps = lock is already assigned to another User Card or the User Card is already assigned to another locker.

Create and delete Master Cards



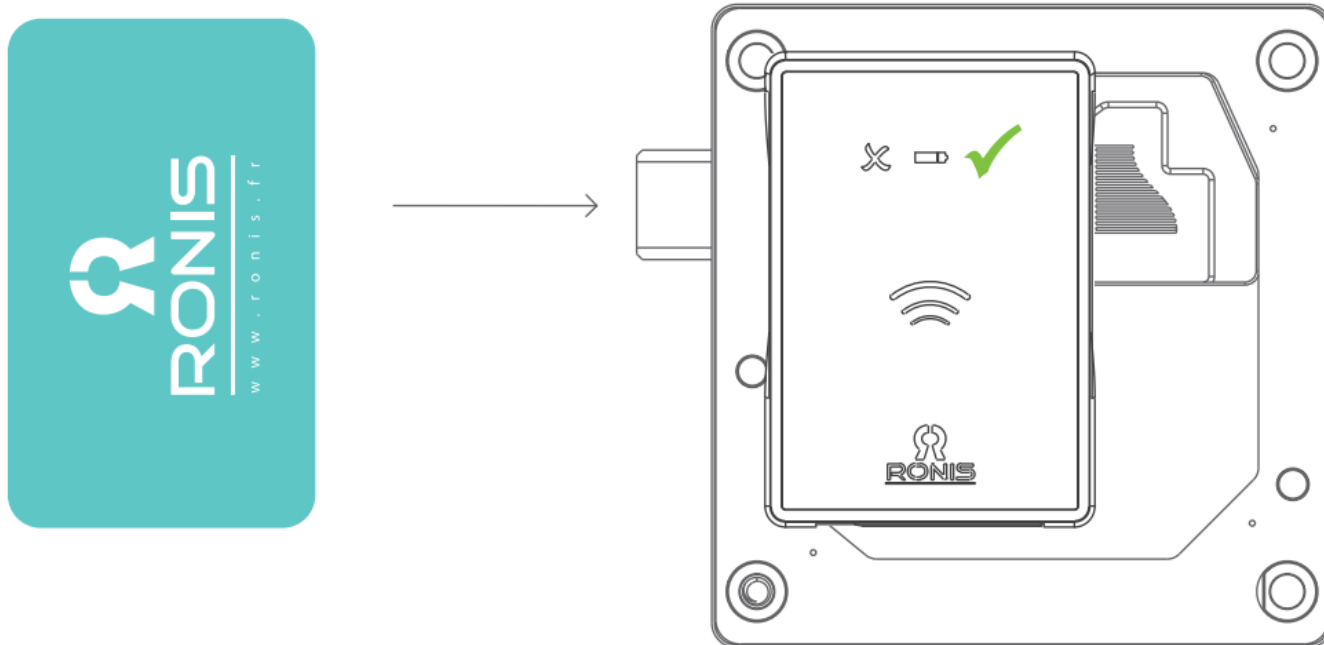
CREATE:

- Place the Management Card close to the lock, followed by the new Master Card.
- Up to 5 Master Cards can be created per lock.
- Green LED and long beep = Master Card created successfully.
- Red LED and 3 short beeps = Master Card not created.

DELETE:

- Place the Management Card close to the lock, followed by the Master card.
- Green LED 2 fast blinks and 2 short beeps = Master Card deleted.

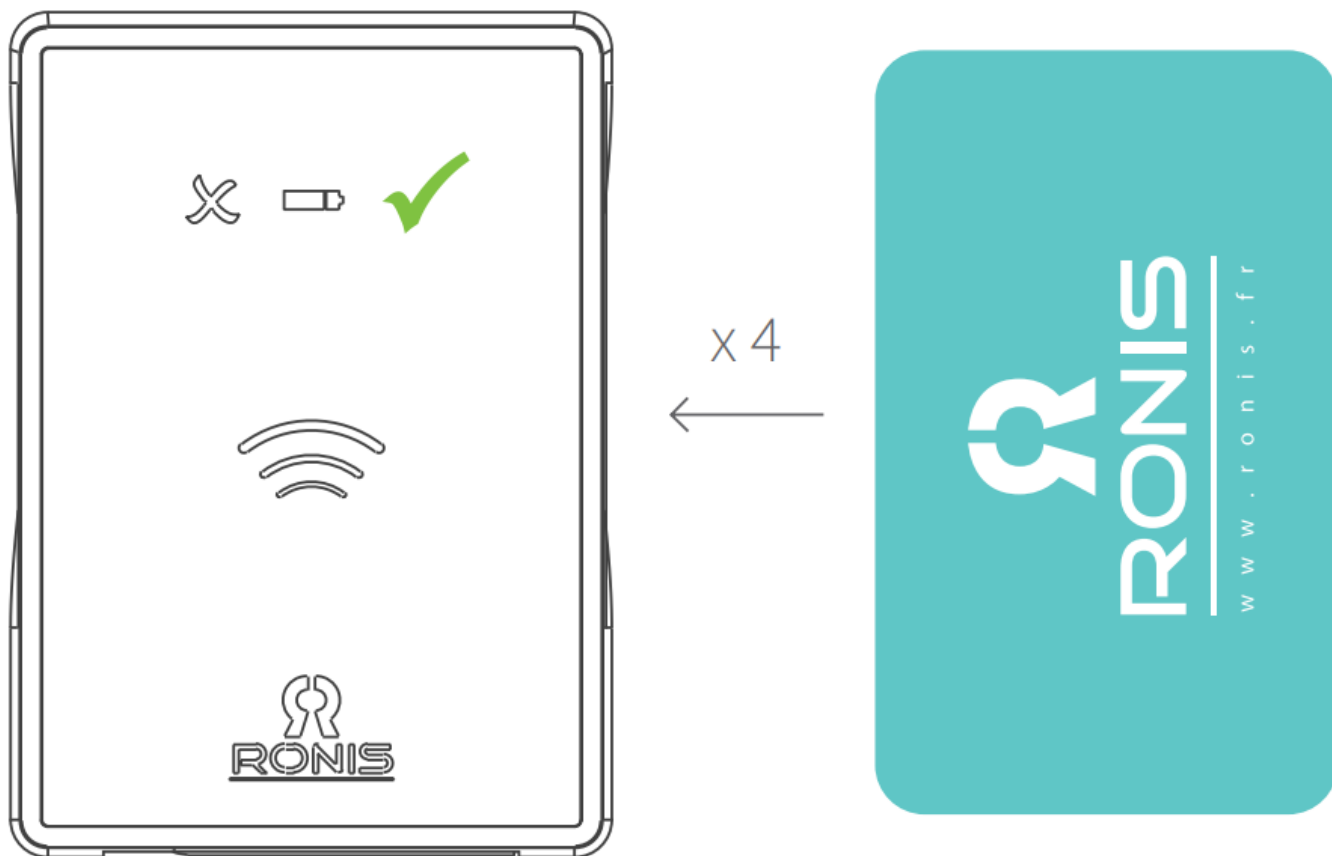
Open using Master Card: Inspection mode



INSPECTION MODE

- Place the Master Card close to the lock (1 time)
- Green LED and long beep
- Lock opens after 30 seconds
- After inspection time, the lock closes automatically
(User Card is not deleted in Multiuser Mode)

Delete all User Cards



- Place the Master Card close to the lock (4 times)
- All User Cards for this lock have now been deleted.

Reset User Cards



- Place the Master Card close to the lock (5 times), followed by the User Card to be deleted.
- 1 long beep = User Card deleted.
- This card is now available for a new user.

Programmable settings (management software and cable required)

AUTOMATIC OPENING TIME:

The lock will open automatically at the programmed time:

- hh : mm
- Mon, Tue, Wed, Thu, Fri, Sat, Sun
- Working days
- Two options:

1. Leave door open
2. Close door again

ACOUSTIC SIGNAL VOLUME:

- High/Low/Off

LED INDICATION OF CLOSED POSITION:

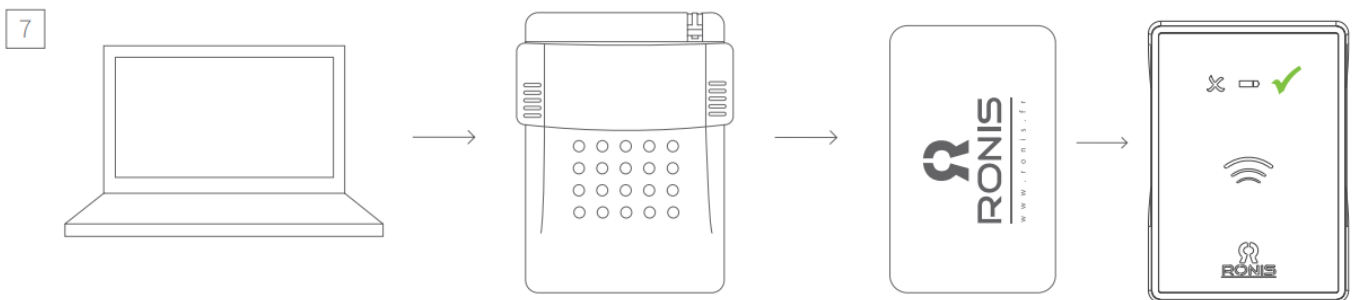
- On/Off blinking red LED when locker is closed

CODES:

- User / Master

LAST EVENTS
BATTERY LEVEL
NUMBER OF OPERATIONS

Settings Card



1. Load settings from the computer to the settings card (WHITE).
2. Place the Settings card close to the lock.
3. The settings will be automatically transferred to the lock.

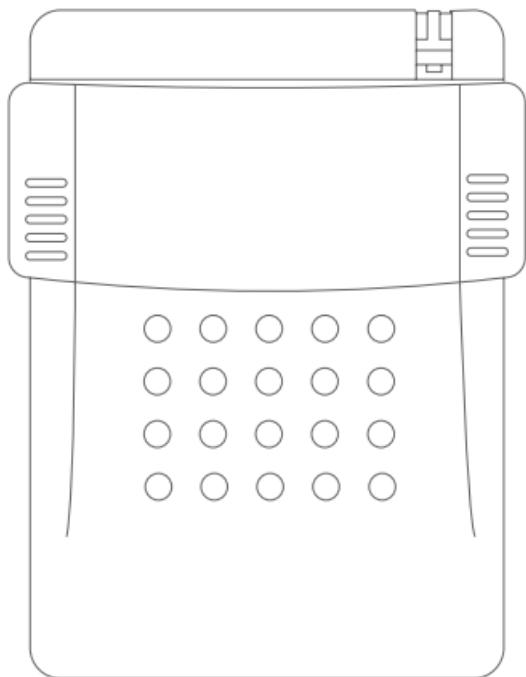


Table Reader/Writer

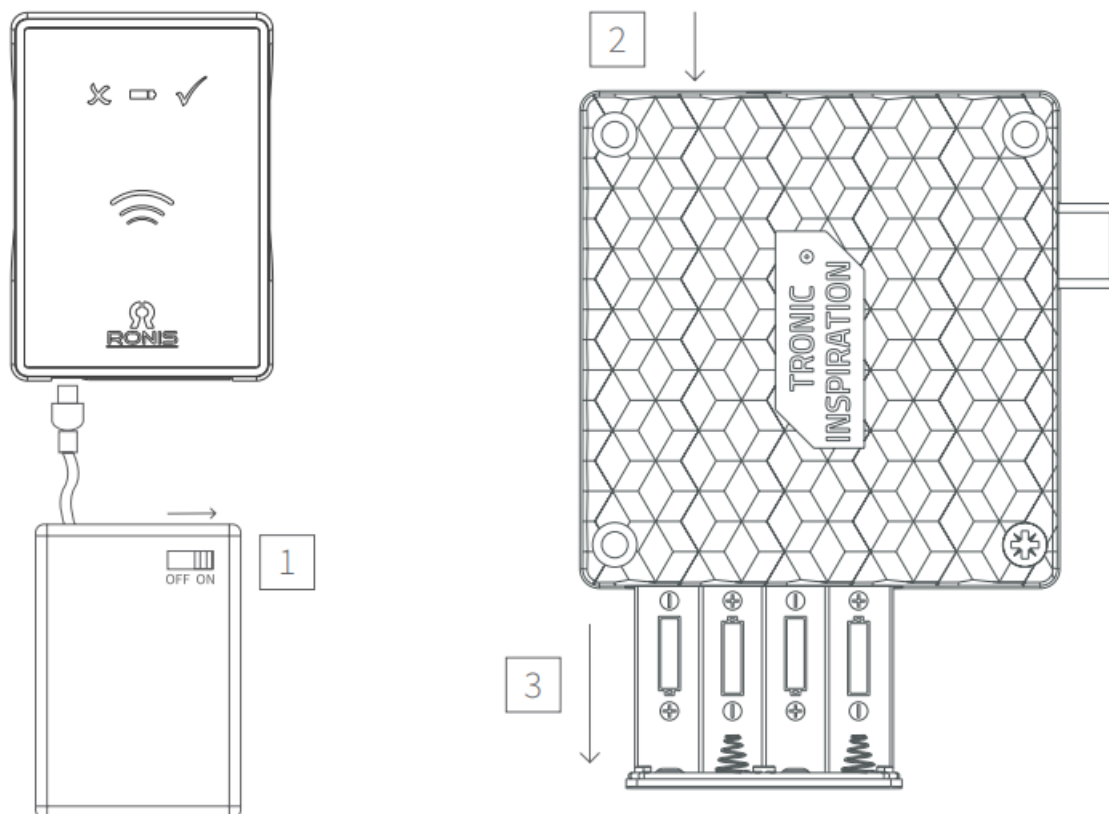
Used to read or write information from cards and bracelets. In conjunction with the software, the Table Reader is an essential accessory for complete management of RFID installations

Use of the Table Reader allows remote management functions (i.e. from a reception desk) such as:

- Create and delete master/user cards
- Read relevant information from the card (locker N^o, user ID, battery level).
- Assign users to locks, limited time of use (hours/days/months).
- Read last events of the locks.
- Read all settings from locks.
- Create Settings Card to modify lock parameters.



Batteries replacement

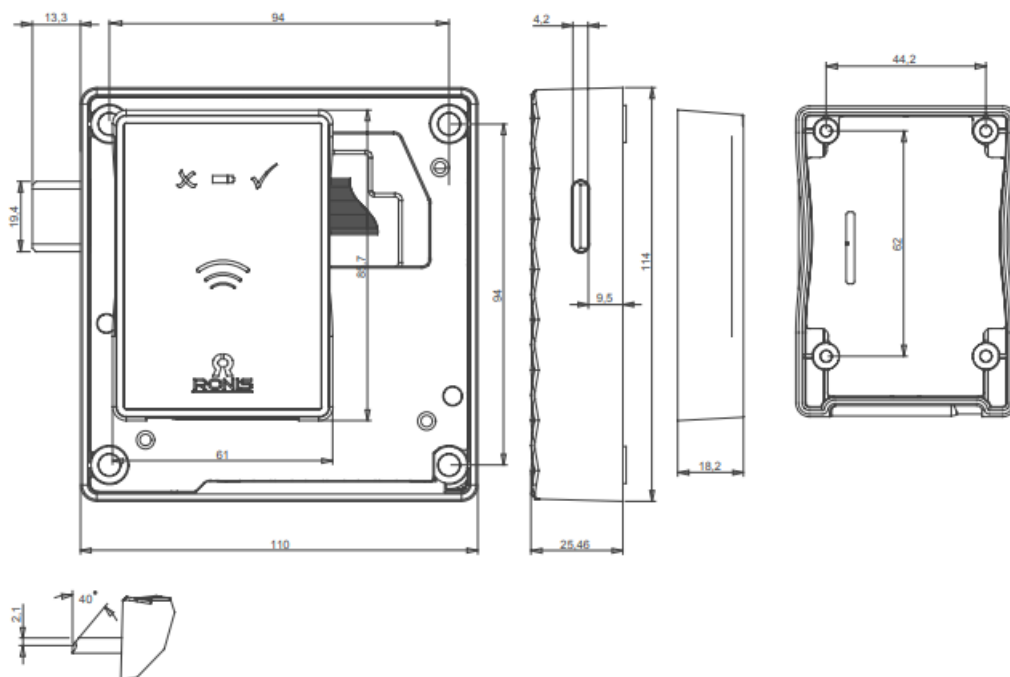


1. Connect the battery pack.
2. Loosen the Torx 20 screw.
3. Remove the battery holder.

IMPORTANT:

Battery replacement must be completed in less than 5 minutes. The battery pack must remain connected during the release of the batteries (otherwise, the clock will lose the programmed time).

Measurements



IP (keypad / lock case)	—/45
Working temperature	-5°C <> +70°C
Latch force	> 45Kgf
UV Rays	> 10000h
Vibration	10 – 200 Hz 2g
Life cycles	> 200000 cycles
Electrostatic discharge	8000 V
Battery life	> 35000 cycles or 2 years

Warranty and liability

Our General Terms and Conditions apply. We do not accept liability for personal injury or property damage resulting from one or more of the following

- Improper use of the furniture lock
- Failure to observe the notices in these instructions
- Incorrect assembly

- Incorrect product repairs
- Disasters caused by external influences and force majeure.

Copyright

This documentation may not be reproduced either in whole or in part, stored or transmitted, disclosed or translated in any form or by any means without the prior written consent of DOM Security.

This documentation is updated at regular intervals. The publisher is always grateful to receive information about any errors or suggestions regarding this documentation.

© DOM Security, 20, rue de l'Arc de Triomphe, 75017 Paris, France

Documentation Officer

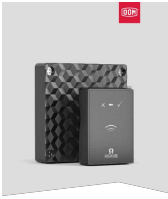
DOM Security
Product Management Department
20, rue de l'Arc de Triomphe
75017 Paris, France

Information available online

You can download these instructions and other information about the Tronic family on the product details page at www.dom-security.com



Documents / Resources

	<p>DOM Security Tronic Mifare Electronic Lock [pdf] Instructions Tronic Mifare Electronic Lock, Electronic Lock, Tronic Mifare, Lock</p>
---	--

References