



DOLFINOS Pure Edition User Manual

[Home](#) » [DOLFINOS](#) » DOLFINOS Pure Edition User Manual 

DOLFINOS Pure Edition User Manual



Improper use can lead to damage to both the product and the instrument. Please carefully read the user manual. We strongly recommend regularly inspecting the condition and integrity of all product components. If any parts are worn or damaged, replace them immediately. DOLFINOS assumes no liability for damages to property or persons resulting from the use of DOLFINOS products.

Please consider the following guidelines when using the product:

- Because this product incorporates high-tech features, it's essential to carefully read this booklet before using your DOLFINOS System.
- Use carefully; keep away from small children.
- Store in a dry environment and away from direct sunlight.
- Always use tools provided by DOLFINOS and replace them when worn out.
- For further questions, please feel free to contact DOLFINOS.

To benefit as much as possible from our system we recommend viewing all tutorials and testimonials on our website.

Our warranty only covers damage to our products caused by proper use. Consumable parts (e.g. adapter springs or cushions) are excluded from the warranty. We expressively refer to our GTC for further information.

Dear

Throughout the years of developing this system, our aim has always been to offer you a solution that EMPOWER MUSICIANS. The manual and the tutorial videos on our website were made for you to allow you to benefit as much as possible from your PURE Edition.

Like a precise Swiss watch, a DOLFINOS needs to be serviced from time to time in order to reach its whole lifespan.* We hope your DOLFINOS will become your long time companion throughout your musical journey.

In the name of the DOLFINOS team

Please share your thoughts with us via E-mail, Instagram or Facebook!

READY TO PLAY

Contents

[1 In just a few steps.](#)

[2 Documents /
Resources](#)

[2.1 References](#)

[3 Related Posts](#)

In just a few steps.

Reading this manual carefully allows you to benefit most from the Rest System, as well as prolong the lifespan of your product.

Loosen the screws of the adapter with the key (a) and pull the adapter open (b). Please only use the supplied key.

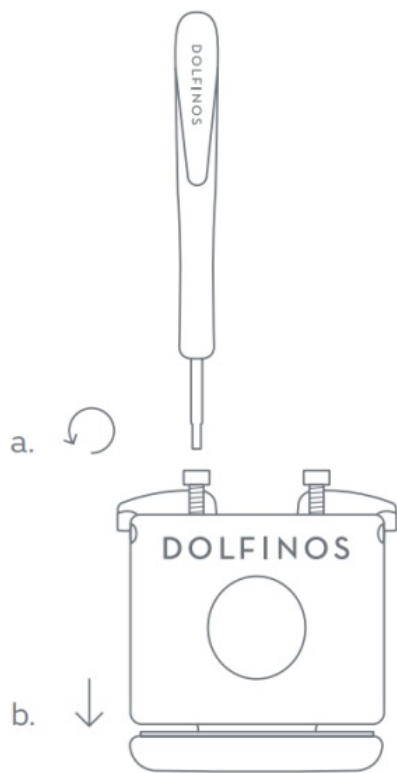
PLEASE NOTE

Access to the screws has been designed in a user-friendly manner: The heads of the screws are aligned with the O's of the DOLFINOS brand marking. Be aware that the blade/the bit of the screwing tool is only kept in place in the handle by a magnet.

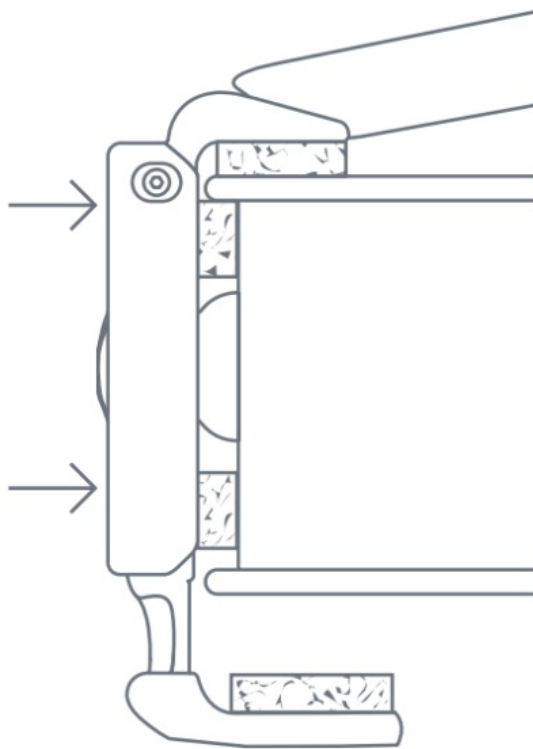
Therefore:

1. Keep all tools and parts away from small children and vulnerable individuals at all times.
2. If this piece falls out, it may damage the surface of the instrument.

DOLFINOS declines any responsibility for the use of non-company-provided screwdrivers.
This applies to the entire user manual.

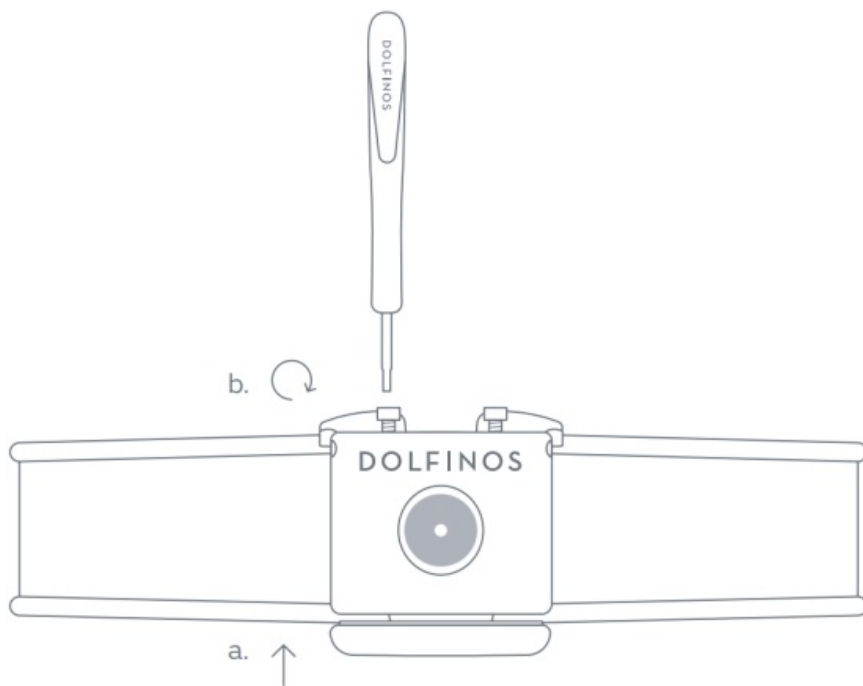


Place the open adapter onto the instrument, following the drawing, making sure all four square corks are aligned parallel to the rib and the end knob of the instrument is centered horizontally. The square corks do not necessarily need to touch the rib of the instrument.



Once the adapter is aligned, push the top and bottom together (a). Use our key to close the adapter. In order to keep the top and bottom parallel, alternate between both screws after every full turn (b). Avoid tightening one screw all the way before tightening the other one. Continue until it fits properly.

Please check the retaining force of the adapter regularly, especially after the first playing period. If the adapter moves while playing, the screws must be tightened again. Other squeezing sounds may also occur from an adapter which is not tightened enough.



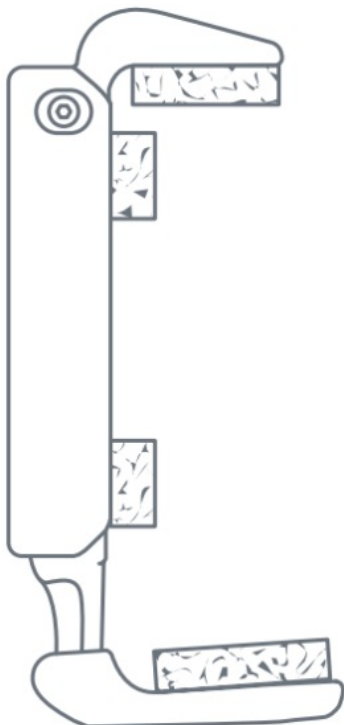
PLEASE NOTE

Cork is a natural material that reacts to pressure, friction, temperature, and humidity.

Therefore, we recommend regularly checking if the cork is still in its original protective state. **In particular, regularly inspect the bottom cork to ensure it remains sufficiently thick.** If the cork becomes too thin, new cork can be ordered and replaced.

In case sandpaper is needed to adjust the cork surface, make certain the dust does not fall into the mechanical parts of the adapter.

This may negatively influence or damage the functionality of the system.



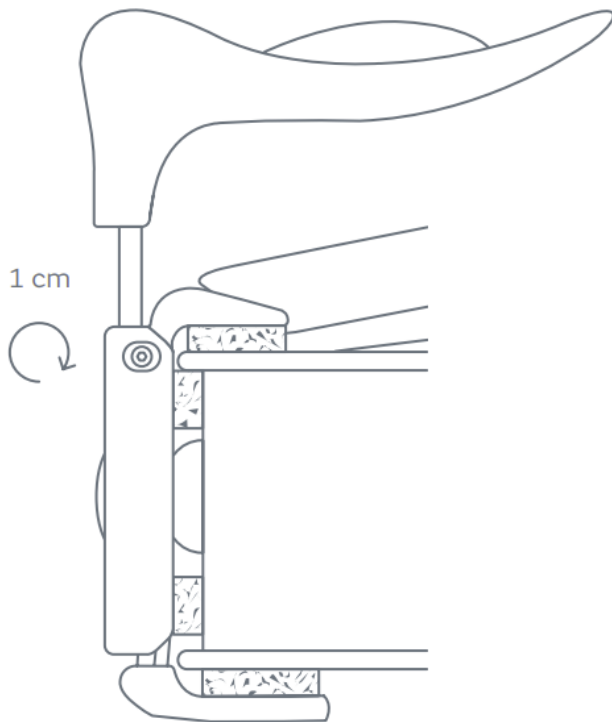
Now, the chinrest can be easily mounted onto the adapter. Use the key (the thin side of the tool) to tighten it. To tighten, turn clockwise.

Once the fixing screw is in contact with the titanium rod, a slight turning movement is sufficient to keep the chinrest in place. The chinrest can be raised from the adapter up to one cm. Keep in mind that with this system, less force is required to hold and control the instrument with the chin.

To prevent the screws from falling out, they have been coated with a threadlocker liquid.

Due to this coating, resistance can be felt while tightening or loosening the screws. **Stop tightening as soon as the screws touch the titanium rods. Failure to follow instructions may cause damage to the tool or the screws.**

Tightening is done clockwise.



PLEASE NOTE

The insert screws are micro screws that can be easily damaged if not handled carefully.

Replace screws promptly upon noticing that the thread is worn. **DISCLAIMER:** Damaging these screws can make it hard to remove the chinrest for adapter maintenance. DOLFINOS is not responsible for any additional costs incurred if these instructions have not been followed.

If the rods continue to slip despite the screws being tightened, follow these steps:

1. Take the chinrest out completely.
2. Clean the titanium rods with alcohol.
3. Clean the rod holes in the adapter carefully with a dry interdental brush.
4. Roughen the rods horizontally with sandpaper.
5. If necessary, tighten the screws further.

CARE NOTE

Chinrest:

To clean the wooden chinrest, remove it from the adapter, apply a small amount of natural or olive oil, rub, and polish until no residue remains.

ABS chinrests can be washed with mild soap and lukewarm water, then treated with oil as described for wooden chinrests.

Avoid rubbing alcohol or similar substances.

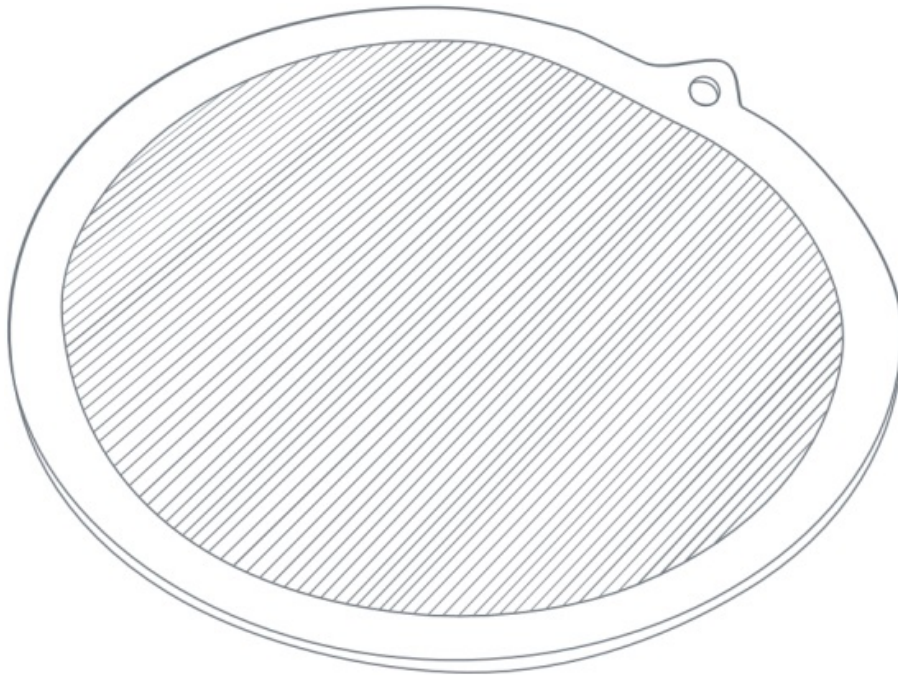
Adapter Base Cover:

If the Adapter Base Cover is too thick or causes discomfort, it can be fully removed or sanded down with sandpaper to make it thinner. The adapter should be removed from the instrument before making any

adjustments.

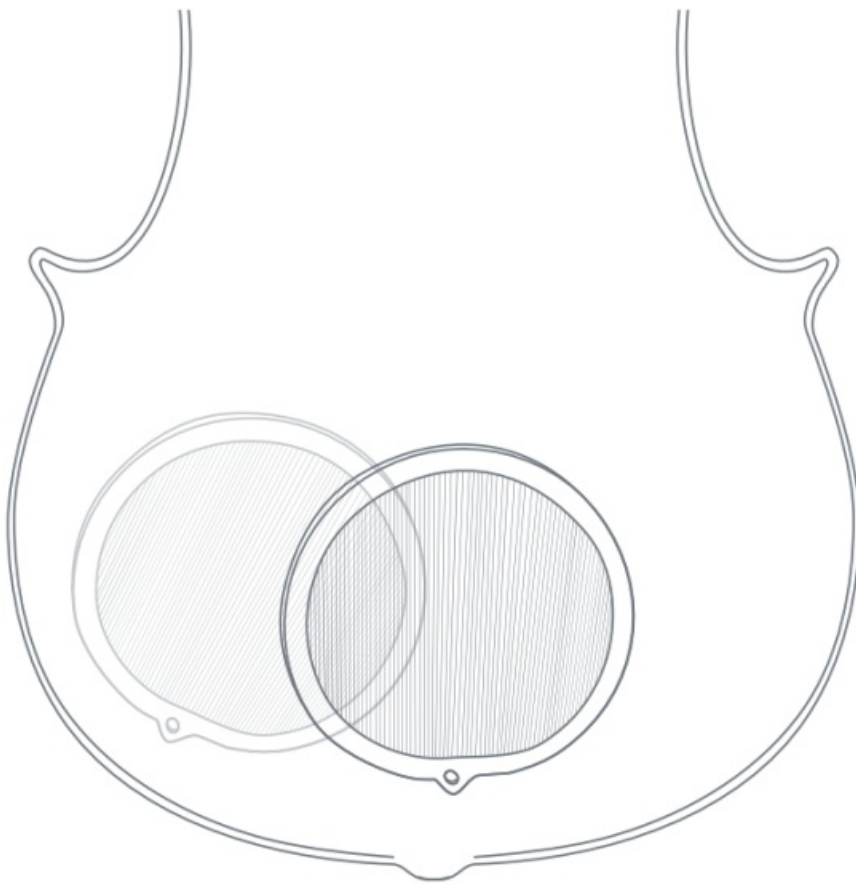
The Adapter Base Cover can be reattached using superglue, or a replacement adapter base can be ordered.

Preparing and cleaning the DOLFINOS Grip Pad



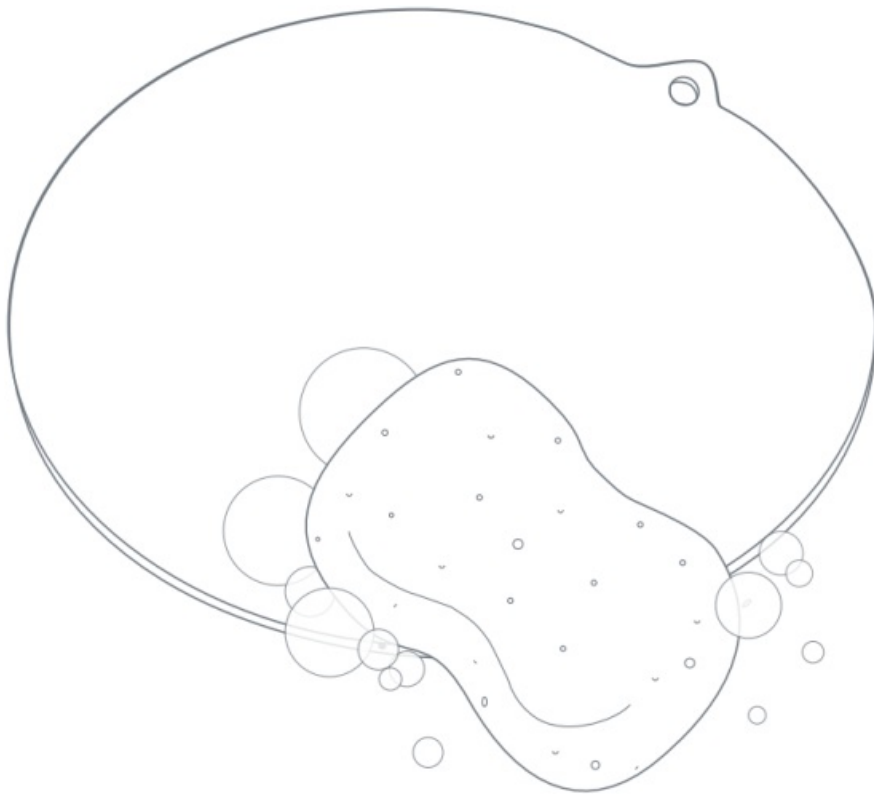
1. Remove foiles from the Grip Pad.
2. Tear off the little black cones.
3. Clean the DOLFINOS Grip Pad by wetting it, then gently rubbing the flat side with a soft sponge and mild soap.
4. Rinse the Grip Pad with clean water.
5. Repeat steps 3 and 4. Use some foam to clean the other side of the Grip Pad (the micro-lamella side) without rubbing the lamella.
6. Rinse the Grip Pad, shake the water off and wipe it off with a clean micro fibre cloth.
7. Hang it on the hole of the Grip Pad until it is completely dry. Insert a pencil into the hole, rest it on the edge of a table, and let the pad hang in the air. To hold it in place, place a heavy book on the pencil.

Mounting of the DOLFINOS Grip Pad



1. Make sure the back of the instrument is dry and polished with a suitable cloth and varnish cleaner before mounting the Grip Pad.
2. If the instrument was recently varnished or its condition is uncertain, consult a luthier first.
3. Place the cleaned flat side of the pad on the back of the instrument, ensuring that the hole typically faces the player.
4. Flatten the Grip Pad and press it gently down to the back of the instrument.
5. To find the optimal playing position, the Grip Pad can be easily removed and repositioned. Ensure that the lamellas are positioned perpendicular to the direction in which the instrument typically slips during performance.
6. When the Grip Pad and the back of the instrument are smooth and free of dust, the **Van der Waals** force will securely hold the Grip Pad in place without any residue or adhesive.

Special remarks



1. If the back of the instrument has a rough surface, which may reduce the strength of the Van der Waals force, a special micro-suction sheet can be ordered to place between the instrument and the Grip Pad.
2. The effect of the Grip Pad is not only a better hold while playing, but it also protects against the normal abrasive impact of playing without a shoulder rest.
3. To remove it, carefully and slowly detach the Grip Pad.
4. To clean the Grip Pad's micro lamella side from dust, use a soft toothbrush or remove the pad, wash it as described, and then use the toothbrush and soap foam to clean it thoroughly. When brushing, always follow the direction of the lamellas.
5. Always remember to rinse it with clean water and dry it before reattaching it to the instrument.

© 2025 DOLFINOS, All Rights Reserved



Explore our step-by-step tutorial videos online!
Scan the QR code for instant access.

Would you like to get in touch with us:

sales@dolfinos.com


+41 (0) 56 222 66 33

Visit us also on:



D O L F I N O S

Documents / Resources

	<p>DOLFINOS Pure Edition [pdf] User Manual Pure Edition, Pure, Edition</p>
--	--

References

- [User Manual](#)

[Manuals+](#), [Privacy Policy](#)

This website is an independent publication and is neither affiliated with nor endorsed by any of the trademark owners. The "Bluetooth®" word mark and logos are registered trademarks owned by Bluetooth SIG, Inc. The "Wi-Fi®" word mark and logos are registered trademarks owned by the Wi-Fi Alliance. Any use of these marks on this website does not imply any affiliation with or endorsement.