

Doculus Lumus®
8v0 Fraud Detection Devices



Doculus Lumus 8v0 Fraud Detection Devices User Guide

[Home](#) » [Doculus Lumus](#) » **Doculus Lumus 8v0 Fraud Detection Devices User Guide** 

Contents

- [1 Doculus Lumus 8v0 Fraud Detection DeviceProduct Specifications](#)
- [2 Product Usage Instructions](#)
- [3 Indicator](#)
- [4 LI Additional Lithium-Ion Battery](#)
- [5 Device Options](#)
- [6 Frequently Asked Questions](#)
- [7 Documents / Resources](#)
 - [7.1 References](#)
- [8 Related Posts](#)

Doculus Lumus®

Doculus Lumus 8v0 Fraud Detection Device



Product Specifications

- **UV Light:** 365 nm
- **IR Laser:** 980 nm
- **UVB/C Light:** 254 nm
- **LEDs:** 4 for UV*, 8 for Oblique Light, 4 for UVB/C, additional LEDs for other functions
- **Battery:** Lithium-Ion, Additional battery option available

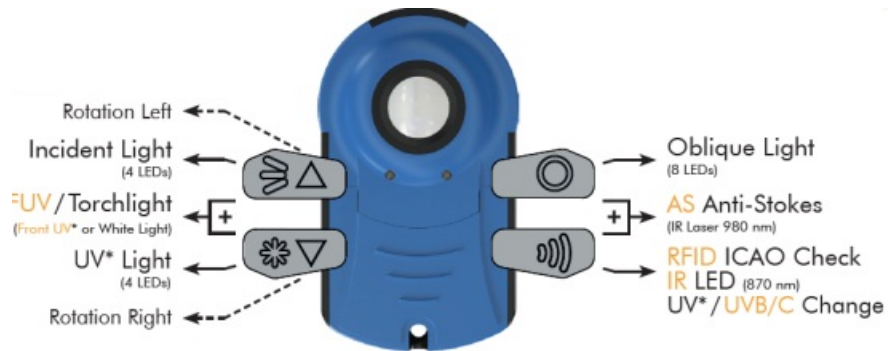
Product Usage Instructions

- **Incident Light:**
Rotate left to activate the Incident Light with 4 LEDs. Can be set to manual or automatic rotation.
- **UV* / Torchlight:**
Front UV* or White Light option available. Press the button to toggle between the two modes.
- **UV* Light:**
Activate the UV* Light with 4 LEDs. Optionally, keep the button pressed for continuous operation.
- **Oblique Light:**
Rotate right to activate the Oblique Light with 8 LEDs. Can be set to manual or automatic rotation.
- **AS (Anti-Stokes):**
Uses an IR Laser at 980 nm. Suitable for specific applications, such as RFID ICAO Check.
- **RFID ICAO Check:**
Utilizes an IR LED at 870 nm. It can be used for checking RFID chips and UVB/C features.
- **Torch (White Light):**
Provides steady white light or see-through light for documentation purposes.
- **FUV Front UV Torch:**
Front UV Torch at 365 nm wavelength for specialized applications.
- **IR Infrared LED:**
Activate the Infrared LED at 870 nm for specific tasks.

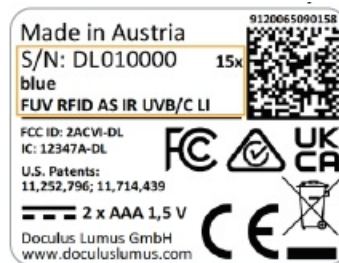
- **Search Function:**

Search for transponders of ICAO Type A (ISO 14443), Type B (ISO 14443), and other standard RFID chips.

Indicator



LI Additional Lithium-Ion Battery



Device Options

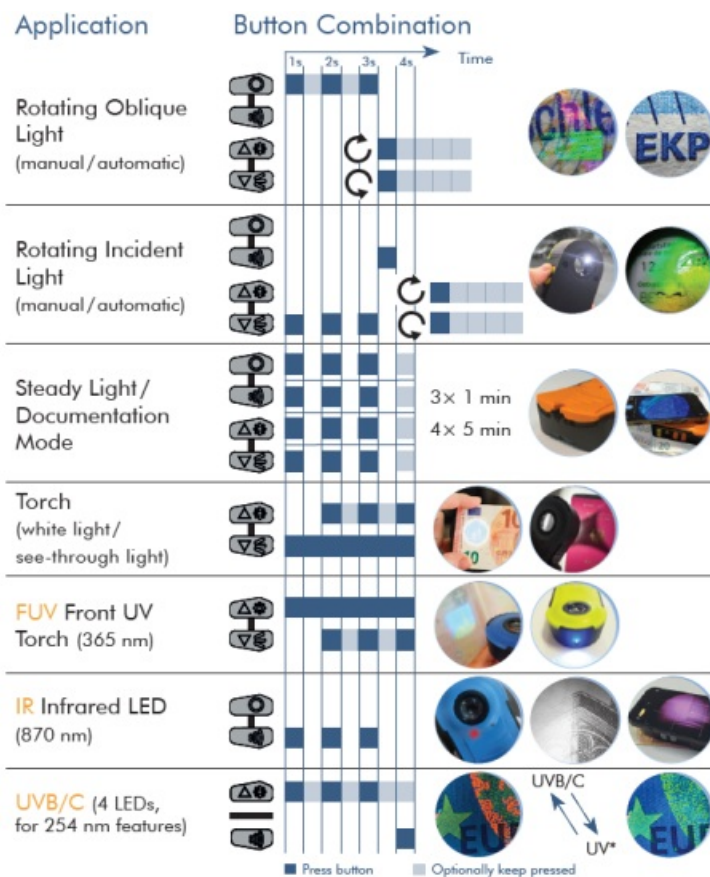
UV Light: 365 nm



SCAN QR CODE



Version 8v0+ EN



RFID ICAO Check	LED Pattern	Explanation
		Low battery / Empty rechargeable battery
		IR LED / AS IR Laser is active
		Red LED blinks fast
		Green LED blinks once recurring
		Green LED blinks twice recurring
		Red and green LED blink once recurring
		Red and green LED blink twice recurring
Standard RFID Chip		Red and green LED blink alternating

www.doculuslumus.com

Frequently Asked Questions

• **Q: How do I switch between UV* and White Light modes?**

A: Press the button to toggle between Front UV* and White Light modes.

• **Q: What is the purpose of the AS (Anti-Stokes) feature?**

A: The AS feature utilizes an IR Laser at 980 nm for specific applications, such as RFID ICAO checks.

• **Q: How can I check RFID chips using the device?**

A: Utilize the RFID ICAO Check function with the IR LD at 870 nm to check RFID chips and UVB/C features.

Documents / Resources



[Doculus Lumus 8v0 Fraud Detection Devices](#) [pdf] User Guide

8v0, 8v0 Fraud Detection Devices, 8v0, Fraud Detection Devices, Detection Devices, Devices

References

- [User Manual](#)

[Manuals+](#), [Privacy Policy](#)

This website is an independent publication and is neither affiliated with nor endorsed by any of the trademark owners. The "Bluetooth®" word mark and logos are registered trademarks owned by Bluetooth SIG, Inc. The "Wi-Fi®" word mark and logos are registered trademarks owned by the Wi-Fi Alliance. Any use of these marks on this website does not imply any affiliation with or endorsement.