



# DMP LT-2871 TMSentry Panel Installation Guide

[Home](#) » [DMP](#) » DMP LT-2871 TMSentry Panel Installation Guide 

## Contents

- 1 DMP LT-2871 TMSentry Panel
- 2 Full Installation and Programming Guide
- 3 Documents / Resources
  - 3.1 References



## DMP LT-2871 TMSentry Panel



TMSentry™ is a small-form panel designed to fit inside ATMs. The feature set is specifically geared toward bank security, including user and zone inactivity audits and encrypted communication.

## Full Installation and Programming Guide

To view the full TMSentry Installation and Programming Guide, scan this QR code or visit [DMP.com](https://www.dmp.com)



### Step 1: Install the Backup Battery

1. Secure the battery to the backside of the panel enclosure with the provided double-sided tape. Do not cover the tamper location. Refer to Figure 1.
2. Remove the front cover of the panel enclosure and pull the battery wires through the wiring cutout.
3. Connect the battery lead connector to the battery connection header on the panel. Refer to Figure 2.
4. Replace the front cover of the panel enclosure after completing panel programming.

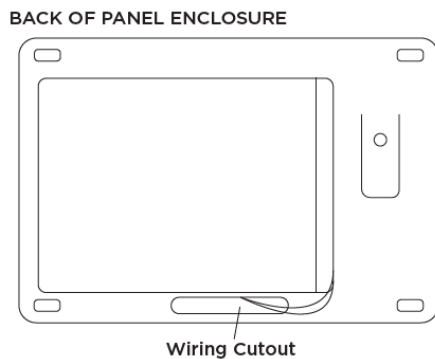


Figure 1: Backup Battery Placement on Panel Enclosure

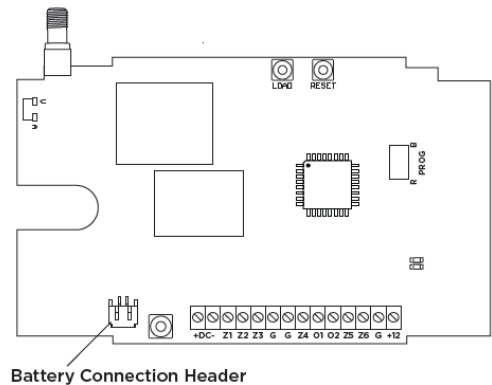


Figure 2: Backup Battery Connection on Panel

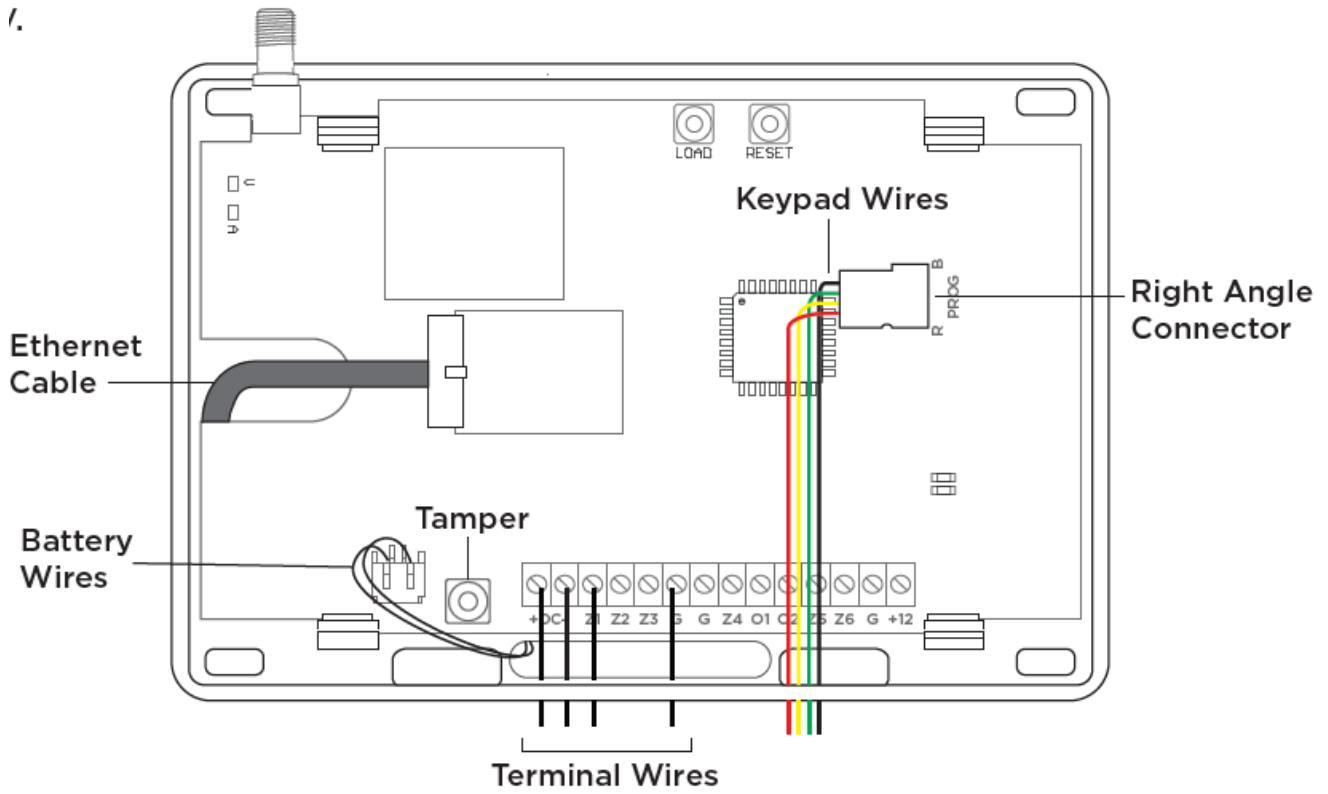
### Step 2: Prepare the Backbox for Wiring

Drill out the desired conduit knockouts for routing wires to the panel. Secure the wires that exit the backbox.

### Step 3: Wire the Panel

Route wires from the outside of the backbox through to the inside, then connect them to the panel. Ensure wires do not interfere with the tamper switch. Refer to the following sections for information about wiring the panel.

**Caution:** Ensure the power supply is not plugged into an outlet before wiring. Failure to do so may result in equipment damage or injury.

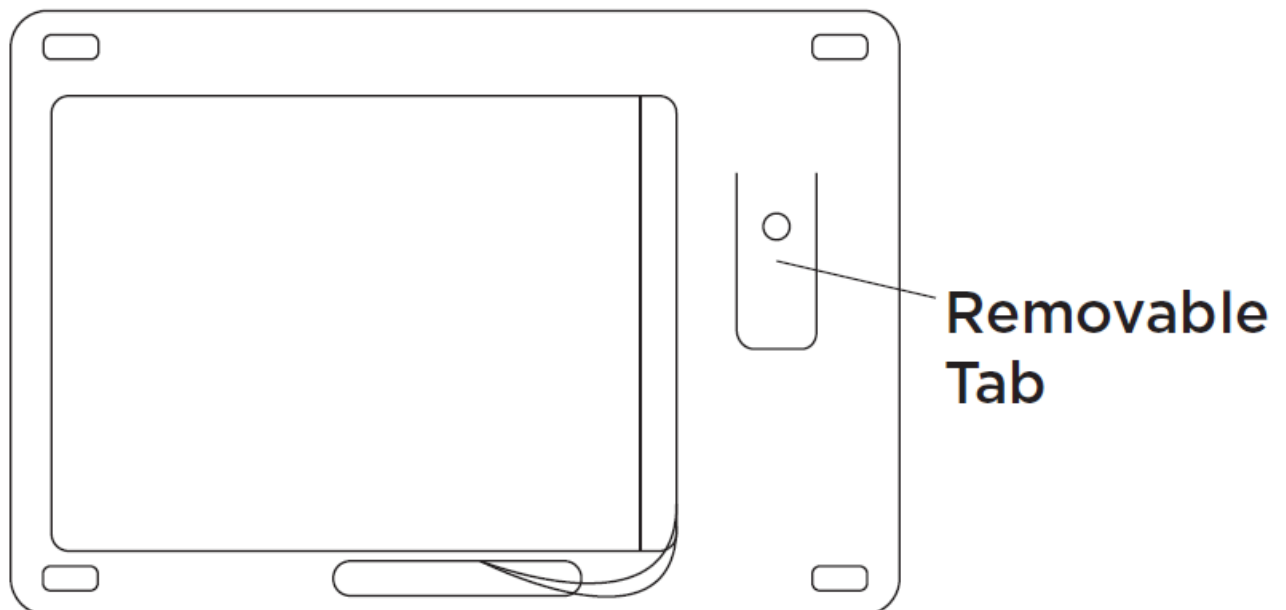


**Figure 3: Wire Placement on Panel**

#### Install the Ethernet Cable

1. Remove the tab on the back of the panel enclosure to make space for the Ethernet cable.
2. Route the Ethernet cable through the space, then connect the Ethernet cable to the panel.

## BACK OF PANEL ENCLOSURE



**Figure 4: Removable Tab**

## Install the Keypad

The 7060 Thinline Keypad, 699-W Deskstand, and Model 330-4 Wiring Harness with right angle connector are included in the TMSentry Kit and may also be ordered separately.

1. Place the keypad on the deskstand and put it inside the ATM.
2. Connect the right angle connector to the keypad wiring harness and then connect it to the keypad connection header on the panel. The black wire should be on top and the red wire should be on the bottom.
3. Secure the wiring harness to the backbox.
4. Program the keypad as a device in the TMSentry and program the keypad. Refer to the 7000 Series Installation and Programming Guide for more information.

## Wire the Terminals

Observe polarity when wiring the power connection terminals. Refer to Figure 5 for terminal wiring information. Secure all terminal wires to the backbox with strain relief.

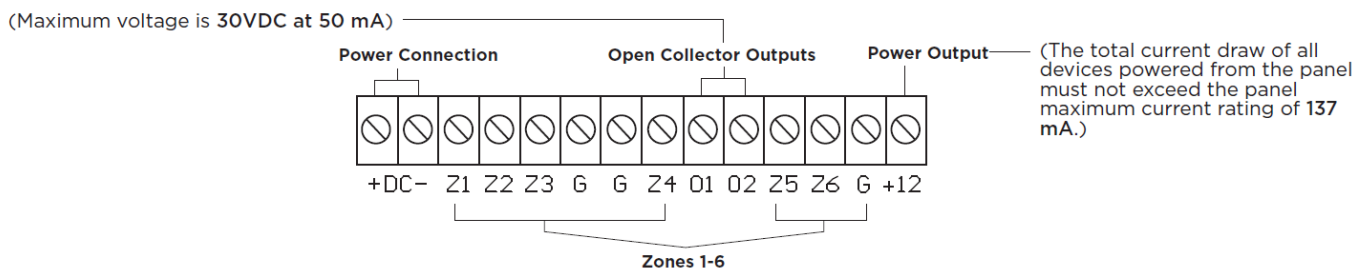


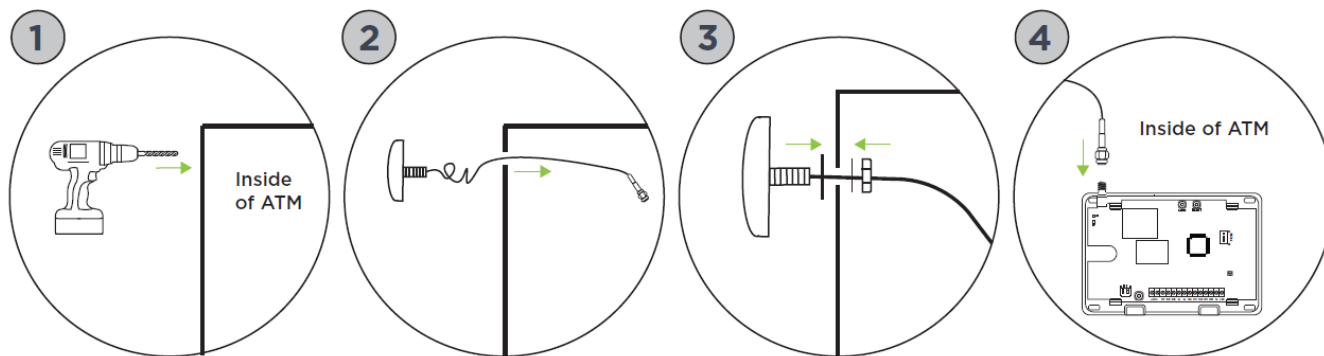
Figure 5: Terminals Labeled

## Step 4: Mount the TMSentry

1. Secure the panel enclosure to the 685 Series Conduit Backbox using the four provided 1" #6 screws.
2. Secure the assembled TMSentry to the inside of the ATM using the provided hook and loop strip.

## Step 5: Install the Antenna

1. Drill a 1/2" hole in the outside of the ATM (1) or use the existing knockout. It is recommended to install the antenna on the back near the top.
2. Route the antenna wire through the drilled hole to the inside of the ATM (2).
3. Secure the antenna puck to the outside of the ATM using the provided washers and nut (3).
4. Place the antenna onto the SMA connector on the panel and twist until tightly secured (4). Secure the antenna to the backbox.



**Figure 6: Antenna Installation Procedure**

Designed, engineered, and manufactured in Springfield, MO using U.S. and global components.  
LT-2871 24271

INTRUSION • FIRE • ACCESS • NETWORKS

2500 North Partnership Boulevard

Springfield, Missouri 65803-8877

**Domestic:** 800.641.4282 | **International:** 417.831.9362

[DMP.com](http://DMP.com)

## Documents / Resources

	<p><a href="#">DMP LT-2871 TMSentry Panel</a> [pdf] Installation Guide</p> <p>7060 Thinline Keypad, 699-W Deskstand, Model 330-4, LT-2871 TMSentry Panel, LT-2871, TM Sentry Panel, Panel</p>
--	---

## References

- [User Manual](#)

[Manuals+](#), [Privacy Policy](#)

This website is an independent publication and is neither affiliated with nor endorsed by any of the trademark owners. The "Bluetooth®" word mark and logos are registered trademarks owned by Bluetooth SIG, Inc. The "Wi-Fi®" word mark and logos are registered trademarks owned by the Wi-Fi Alliance. Any use of these marks on this website does not imply any affiliation with or endorsement.