



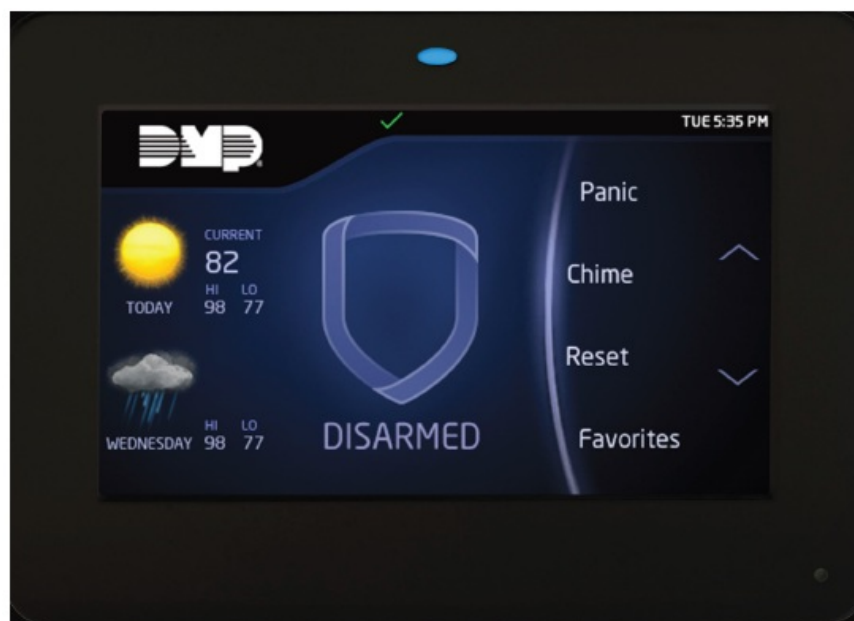
[Home](#) » [DMP](#) » **DMP LT-1311 Interactive Shield Security System Instruction Manual** 

## Contents [ [hide](#) ]

- 1 [DMP LT-1311 Interactive Shield Security System](#)
- 2 [Product Information](#)
- 3 [Product Usage Instructions](#)
- 4 [Features](#)
- 5 [OVERVIEW](#)
- 6 [USING INSTRUCTION](#)
- 7 [FAQ](#)
- 8 [Documents / Resources](#)
  - 8.1 [References](#)



## DMP LT-1311 Interactive Shield Security System



## **Product Information**

### **Specifications**

- Slim profile in glossy black or white finish
- Big, bright, 5-inch full-color display
- Interactive shield for one-button arming
- Intuitive icons for guiding through system functions
- Wired or wireless connectivity options

## **Product Usage Instructions**

### **Arming/Disarming System**

The interactive shield icon displays the current system status.

Press and hold to arm the system or tap the shield to select an arming option (Home/Sleep/Away).

### **Visual Alarm Warning**

The interactive shield changes to red to warn you of an alarm, even if it occurred while you were away.

### **Thermostat and Lights Control**

You can control and automate your thermostat from the keypad and manage your Z-Wave devices with a tap of a button. Set preferences for lights and dimmers easily.

### **Attention List and Animated Icons**

Scroll through the attention list to see system activity history. Animated icons provide up-to-date weather information.

### **Panic Menu and Exit Timer**

Access the Panic Menu through the Carousel Menu. The Exit Timer notifies you of the remaining time before the system arms.

## **Features**

- Slim profile in glossy black or white finish
- Big, bright, 5-inch full-color display
- Interactive shield makes one button arming
- Intuitive icons guide you through system functions
- Press the mini shield in the top right to return to the main screen at any point
- Wired or wireless

## OVERVIEW



## USING INSTRUCTION

### A TOUCH OF CLASS



Screen Turns Red in Alarm

### Touchscreen Control for Your Security System

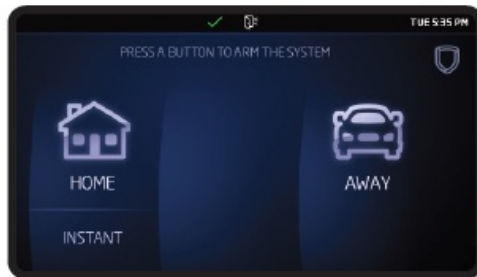
A keypad that fits nicely with your home or office décor as well as your lifestyle — from its elegant display and intuitive, animated graphical interface, to its simplicity of operation with scrolling capabilities. The 5-Inch Touchscreen Keypad is what you expect

from today's security systems.

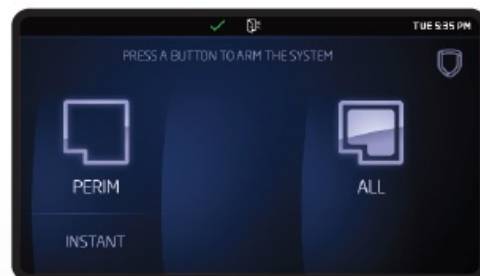
## Arming/Disarming Shield Icon

The interactive shield displays current system status. Press and hold to arm the system or tap the shield to select an arming option.

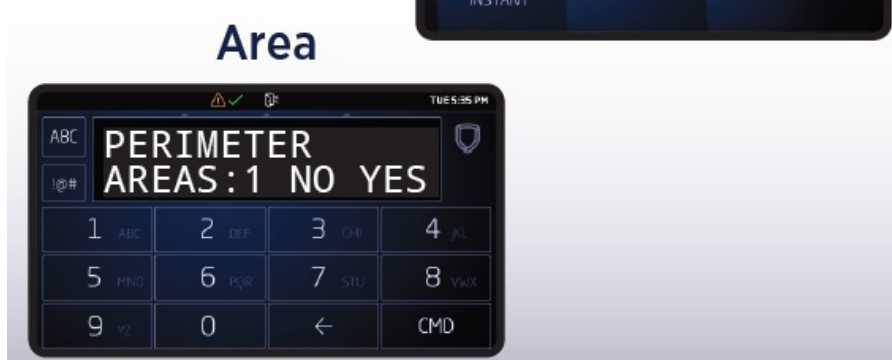
### Home/Sleep/Away



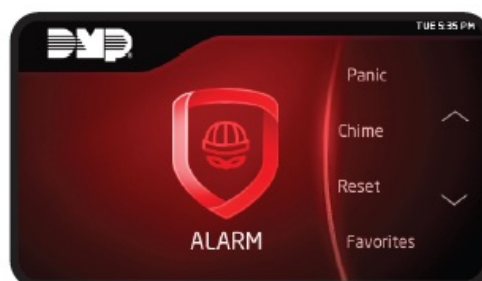
### All/Perim



### Area

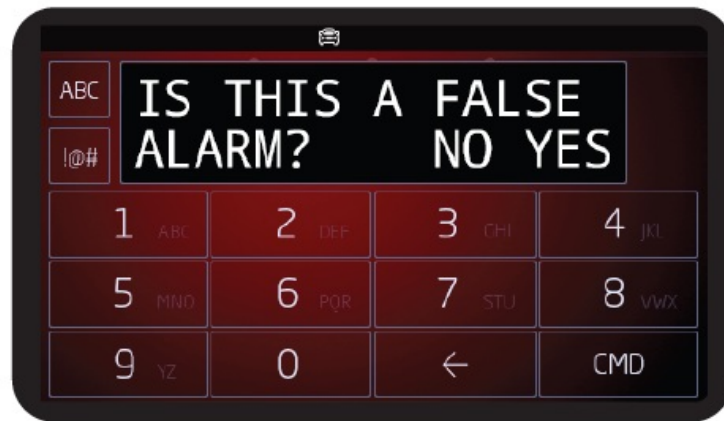


## Visual Warning of an Alarm



The interactive shield changes to red to warn you that an alarm has occurred, even if it happened while you were gone and the siren has been silenced.

# Verifying an Alarm



In the event of an alarm, the False Alarm Question lets you instantly cancel false alarms or confirm real emergencies and summon help more quickly.

## Thermostat

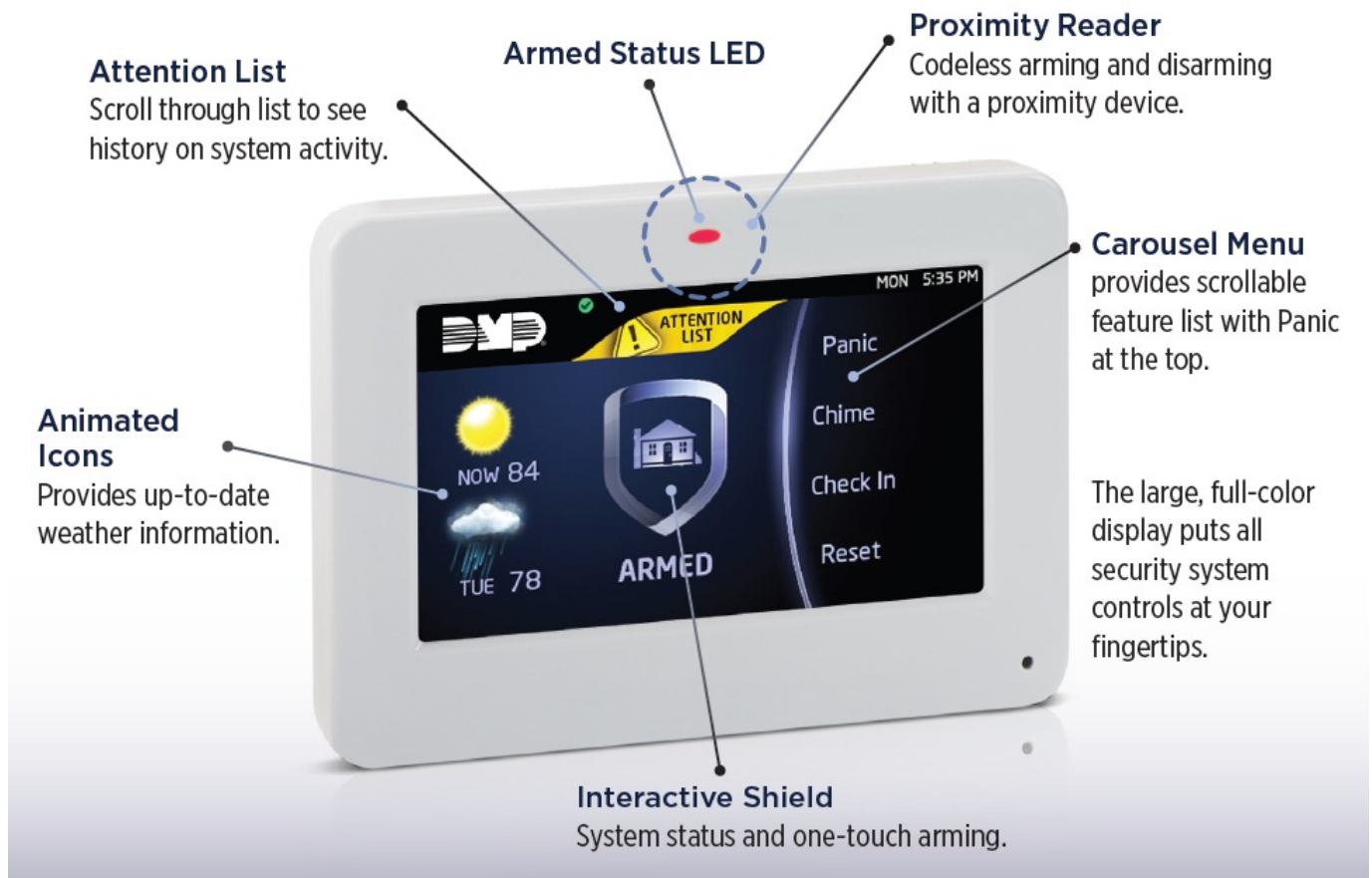


Control and automate your thermostat from your keypad or automatically as you come and go.

## Lights



Control your Z-Wave devices with the tap of a button. Tap the lights on and off and set the dimmer to your preference.



### Panic Menu



Tap Panic on the carousel. The Panic screen will appear. Then press and hold the appropriate panic icon until it illuminates.

### Exit Timer



Notifies you of time remaining before system arms = time to exit.

## FAQ

**Q: How do I cancel false alarms?**

**A:** In the event of an alarm, use the False Alarm Question feature to instantly cancel

false alarms or confirm real emergencies.

**Q: Can I arm/disarm without using a code?**

**A:** Yes, you can arm and disarm the system using a proximity device for codeless operation.

## Documents / Resources

	<a href="#">DMP LT-1311 Interactive Shield Security System [pdf]</a> Instruction Manual LT-1311, LT-1311 Interactive Shield Security System, Interactive Shield Security System, Shield Security System, Security System
---	---

## References

- [User Manual](#)

■ DMP  
◆ DMP, Interactive Shield Security System, LT-1311, LT-1311 Interactive Shield Security System, Security System, Shield Security System

---

## Leave a comment

Your email address will not be published. Required fields are marked \*

Comment \*

Name

Email

Website

☐ Save my name, email, and website in this browser for the next time I comment.

**Post Comment**

**Search:**

**Search**

[Manuals+](#) | [Upload](#) | [Deep Search](#) | [Privacy Policy](#) | [@manuals.plus](#) | [YouTube](#)

This website is an independent publication and is neither affiliated with nor endorsed by any of the trademark owners. The "Bluetooth®" word mark and logos are registered trademarks owned by Bluetooth SIG, Inc. The "Wi-Fi®" word mark and logos are registered trademarks owned by the Wi-Fi Alliance. Any use of these marks on this website does not imply any affiliation with or endorsement.