



DMP COM Series DualCom Universal Alarm Communicator User Guide

[Home](#) » [DMP](#) » DMP COM Series DualCom Universal Alarm Communicator User Guide 

Contents

- 1 DMP COM Series Dual Com Universal Alarm Communicator
- 2 ECP PASSTHRU OVERVIEW
 - 2.1 MOUNT THE COMMUNICATOR
 - 2.2 WIRE THE COMMUNICATOR
 - 2.3 PROGRAM THE VISTA KEYPAD
 - 2.4 CONFIGURE ECP SETTINGS
 - 2.5 CHANGING PROGRAMMING
- 3 VISTA Panel Compatibility
- 4 Documents / Resources
 - 4.1 References
- 5 Related Posts



DMP COM Series Dual Com Universal Alarm Communicator



ECP PASSTHRU OVERVIEW

Cell Com EX Universal Communicators enable you to take over and manage ECP panels with connection to the ECP Bus. This feature is called ECP Passthru.

This guide is designed to walk you through ECP passthru installation and setup. For more complete information on Cell Com EX setup, refer to the Cell Com EX Installation and Programming Guide (LT-2663).

Procedure

The installation must follow this procedure:

- Step 1: Mount the communicator.
- Step 2: Wire the communicator.
- Step 3: Program Vista keypad device address 20
- Step 4: Configure ECP settings (remotely or locally)
- Step 5: Changing Programming

Required Materials

The following software and hardware components are required to ensure successful system takeovers:

- Compatible Honeywell VISTA panel (refer to “VISTA Panel Compatibility”)
- Connection to Dealer Admin (for programming)
- 18-22 AWG unshielded wire (RYGB)

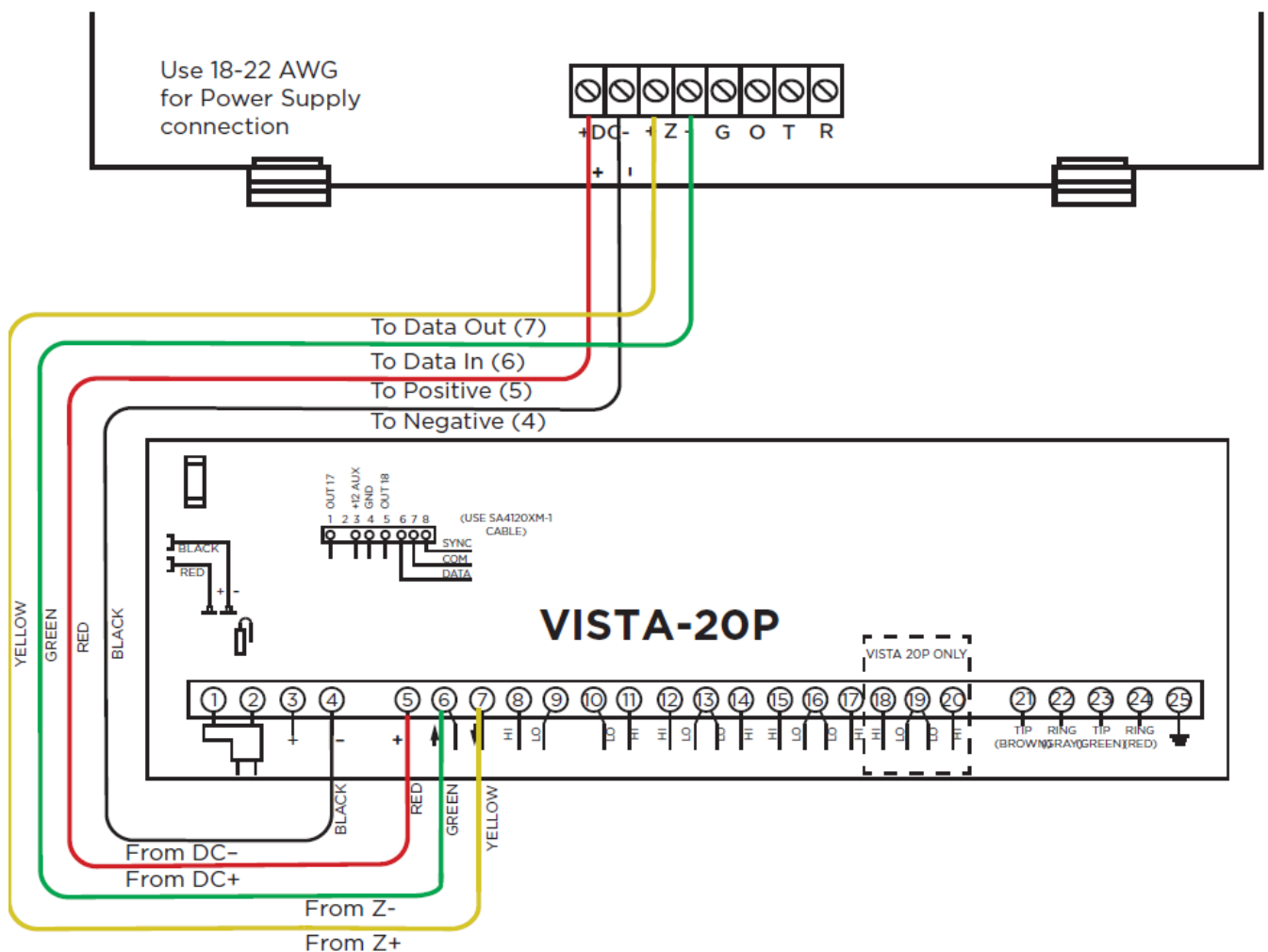
- Remote Link minimum Version 2.21
- Cellular Antenna
- SMA Connector
- Cell Modem
- Programming Connection
- Terminal Block
- Reset Pads
- Status LEDs

MOUNT THE COMMUNICATOR

The module comes in a high-impact plastic housing that you can mount directly to a wall, backboard, or other flat surface. For easy installation, the back and ends of the CellComEX housing have wire entrances. The back also contains multiple mounting holes that allow you to mount the module on a single-gang switch box. Remove the PCB from the plastic housing by loosening the clips on one side and gently lifting it out of the housing base. Insert the included screws in the desired mounting hole locations and tighten them to secure the housing to the surface. Reinstall the PCB in the housing base.

WIRE THE COMMUNICATOR

The communicator can be connected to the ECP Bus of a VISTA panel. See Table 1 and for the necessary wiring connections.

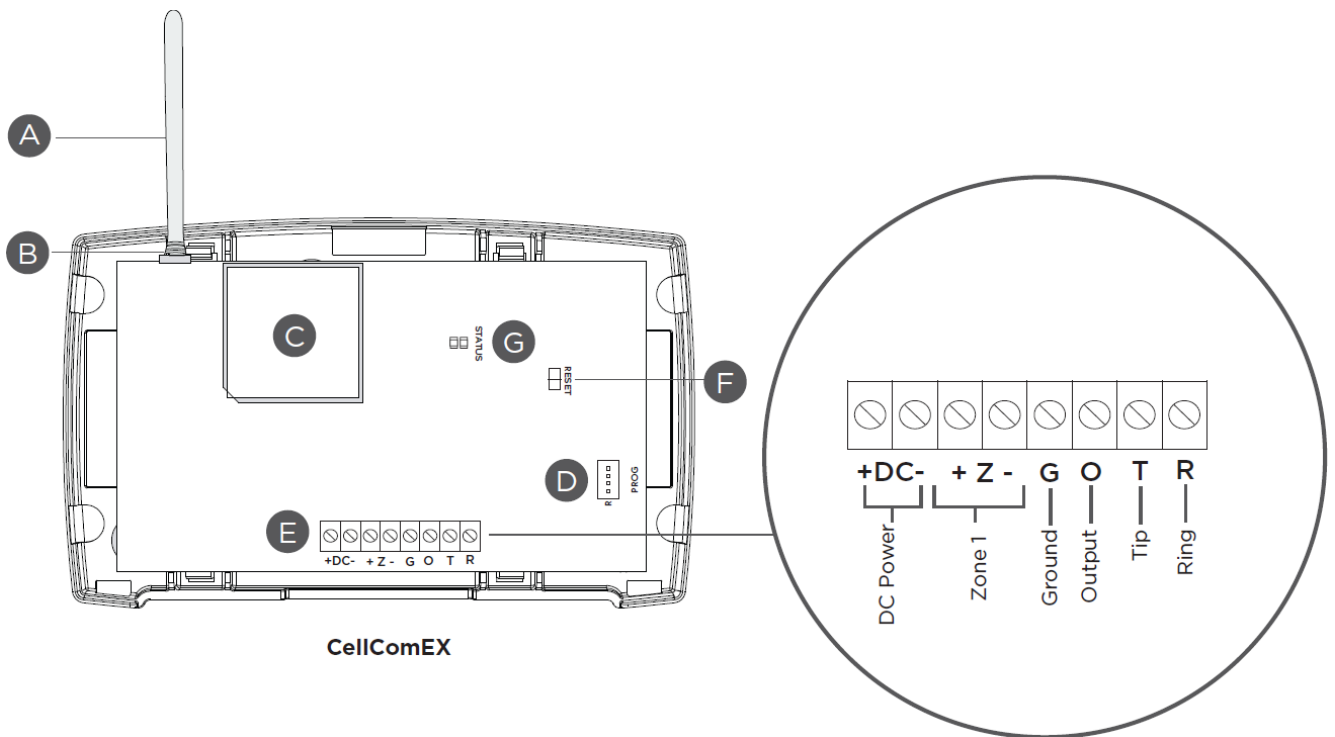


- ECP Wiring

Caution:

Remove all AC and battery power from the control panel before wiring.

1. Attach the antenna to the SMA connector. Refer .



- CellComEX Components

2. Make sure the Vista panel has batteries connected to the system and is also connected to an appropriate power supply.
3. Connect the communicator to Dealer Admin or Remote Link.

Wire Connections

Communicator to ECP Wiring		
Com Series	ECP Bus	Typical Color
+DC	Keypad Power	Red
-DC	GND	Black
Z+	Data Out	Yellow
Z-	Data In	Green

PROGRAM THE VISTA KEYPAD

In this step, you will program VISTA Keypad 5 Device Address 20. This enables the VISTA panel to communicate with a CellComEX. This step must be performed locally at the VISTA panel.

1. Power down and then power up the VISTA panel.
2. Within 1 minute of powering up the VISTA panel, simultaneously press and hold the # and * buttons on the Vista keypad.
3. The keypad displays INSTALLER CODE. Enter the installer code (default is 4112), followed by 8 0 0.
4. Enter *193, then enter 1 0.

5. To save and exit programming, enter *99.

CONFIGURE ECP SETTINGS

For the communicator to properly process data from the VISTA panel, keypad input must be set to ECP. You can perform this programming remotely with Dealer Admin.

Why is this important? Dealer Admin configures the CellComEX to receive ECP data.

Remotely (Dealer Admin)

Before programming, ensure the ECP panel's IP address is set as default.

1. Go to Customers.
2. Find and select the system name.
3. Go to Programming > System Options.
4. In Keypad Input, select ECP.
5. In ECP Partition, enter the number of the partition where you want the communicator to operate.
6. Press Begin ECP Setup.
7. If the host panel is a VISTA 128, turn on VISTA 128.
8. Enter the host panel's installer code in VISTA Installer Code.
9. Press Begin.
10. After setup is complete, Dealer Admin automatically retrieves zones from the host panel. If you need to retrieve zones again later, open System Options and select Get Zones.

The screenshot shows the 'System Options' page in Dealer Admin. A modal window titled 'ECP Setup' is open, overlaying the page. The modal contains the following elements: a toggle for 'VISTA 128?' (labeled with a red circle 7), a text input for 'VISTA Installer Code' (labeled with a red circle 8) with a placeholder '(0000-9999)', and a 'Begin' button (labeled with a red circle 9). Below the modal, the 'System Options' page is visible with several settings: 'Keypad Input' is set to 'ECP' (labeled with a red circle 4), 'ECP Partition' is set to '1' (labeled with a red circle 5), and 'Weather Zip Code' is '00000'. At the bottom of the modal, there are two buttons: 'Begin ECP Setup' (labeled with a red circle 6) and 'Get Zones' (labeled with a red circle 10).

Adding User 2

1. At USER NUMBER, enter 2.
2. At CODE NO, enter the code from the Vista panel's User 2.
3. At USER NAME, enter MASTER.
4. At MASTER? select the checkbox.
5. Press Send.

CHANGING PROGRAMMING

Option 1: Programming with Host Keypad

If you have access to the host panel, you can make zone programming changes in the panel locally using a host keypad. To retrieve new zone programming, select Get Zones in the System Options tab in Dealer Admin.

Option 2: Programming using Compass and Remote Link

Starting with Remote Link™ Version 2.21, you can connect a customer's Honeywell VISTA® panel with CellComEX communicators using Honeywell's Compass® software and Remote Link.

Why is this important? Remote Link is necessary if programming using Compass. It provides a link between the CellComEX and the host panel. Without doing this, no new programming (zones, devices, etc.) can be sent to or retrieved from the host panel.

The following instructions assume that you already have the CellComEX added with the appropriate connection information in Remote Link. To enable ECP Passthru for that account, complete the following steps.

1. Right-click Remote Link and select Run as administrator.
2. Double-click the communicator account to open it.
3. Go to Program > System Options.
4. To enable communication, go to Keypad input and select ECP. Press OK.
5. Go to File > Panel Information.
6. In Connection Information, enter the VISTA account number in Ecp Acct.
7. Press OK.
8. Go to ECP Passthru > ECP Start/Stop Server.
9. Press Yes when asked if ECP Passthru should be started.
10. Minimize Remote Link.

Account	Model	Version	Panel
1	11011	XR550	192
1	12355	DualCom	192
1	234	XTL	192
1	32154	XT50	192
1	44733	XR550	191
1	55667	XR550	193

Region: Northeast

Connection Information

Type: Network

Remote Key: abc123

IP Address: 192.168.0.1

IP Port: 2001

Ecp Acct: 3 3005

Backup Connection Information

Type: None

Location

Address:

City: Boston

State / Zip: MA

Voice Phone:

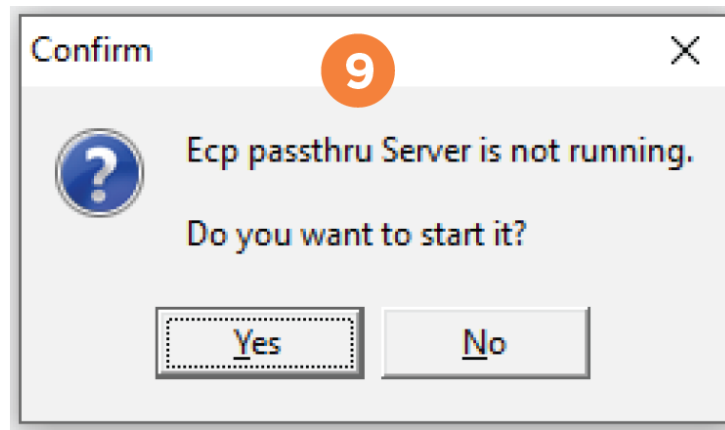
Night Phone:

Extra Information

System Info OK Cancel

Remote Link : [1-12355] 12355

File	System	Panel	Program	Ecp Passthru	Language	Window	Help
Panel Information	Close Panel	Ecp Start/Stop server	connect	Diagnostics			
		Ecp Passthru Log	Alt+F12				



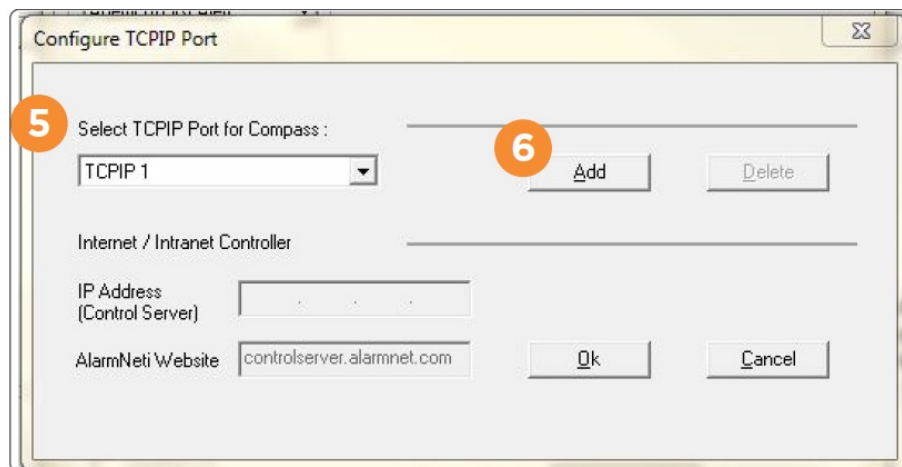
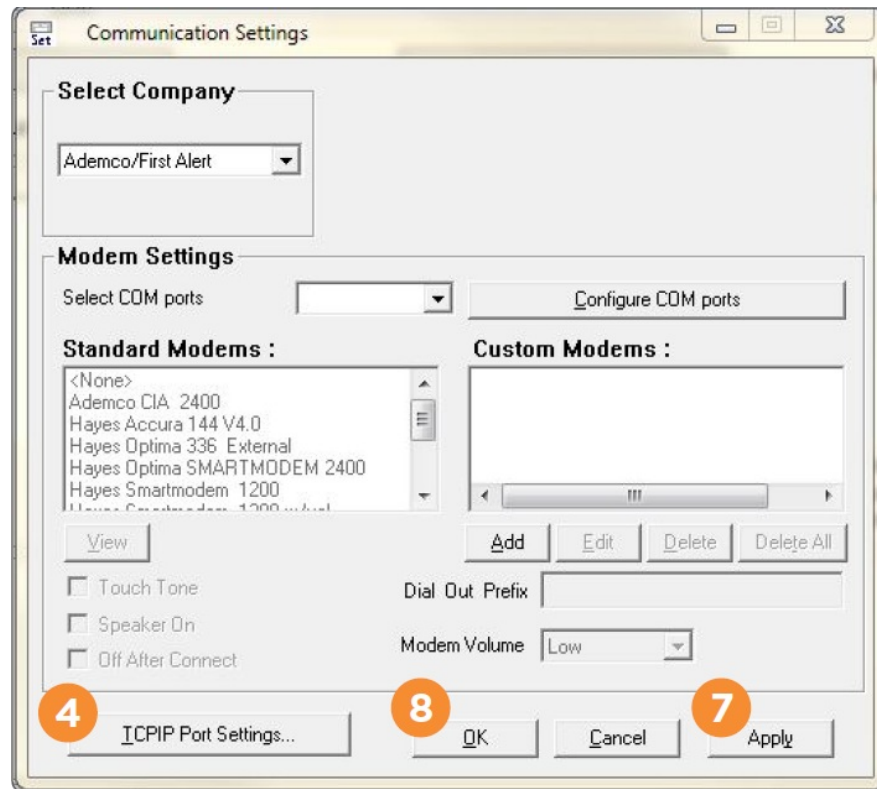
Add the VISTA Panel in Compass

1. Open Compass.
2. In the lower right corner of the Customers page, select Add. The Customer Detail window opens.
3. In Subscriber Data, enter a Receiver number and Account number.
4. In the Panel Data section, select the VISTA panel model and revision number.
5. In Network Device MAC Addr, enter FFFFFFFF.
6. Press OK.

Set Up Communication in Compass

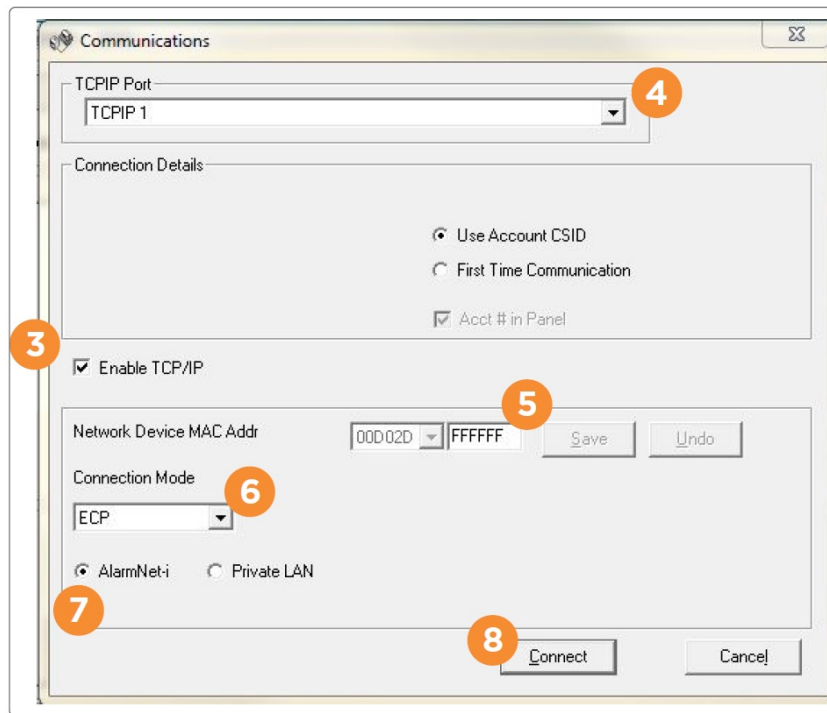
1. In Customers, double-click the account that you created in the previous section.
2. The Panel Editor opens. Go to Tools > Communications.
3. Go to File > Communication Settings.
4. Select TCPIP Port Settings.
5. To ensure that Compass uses a TCP/IP connection, select a TCP/IP port.
6. Press Add.

7. Back in Communication Settings window, select Apply.
8. Press OK.



Configure TCP/IP Settings in Compass

1. In the lower left corner of the Compass Communication window, press Connect.
2. A dialog pops up to notify you that communication settings must be configured. Press OK.
3. Select Enable TCP/IP.
4. In the TCP/IP Port dropdown, select the appropriate TCP/IP port.
5. Ensure that the Network Device MAC Addr is FFFFFFFF.
6. In Connection Mode, select ECP.
7. Ensure that Alarm Net-i is selected.
8. Press Connect.



Retrieving Zones in Dealer Admin

After programming in Compass is completed, navigate to the System Options tab in Dealer Admin and press Get Zones. This ensures any new programming can be viewed in Virtual Keypad and Dealer Admin.

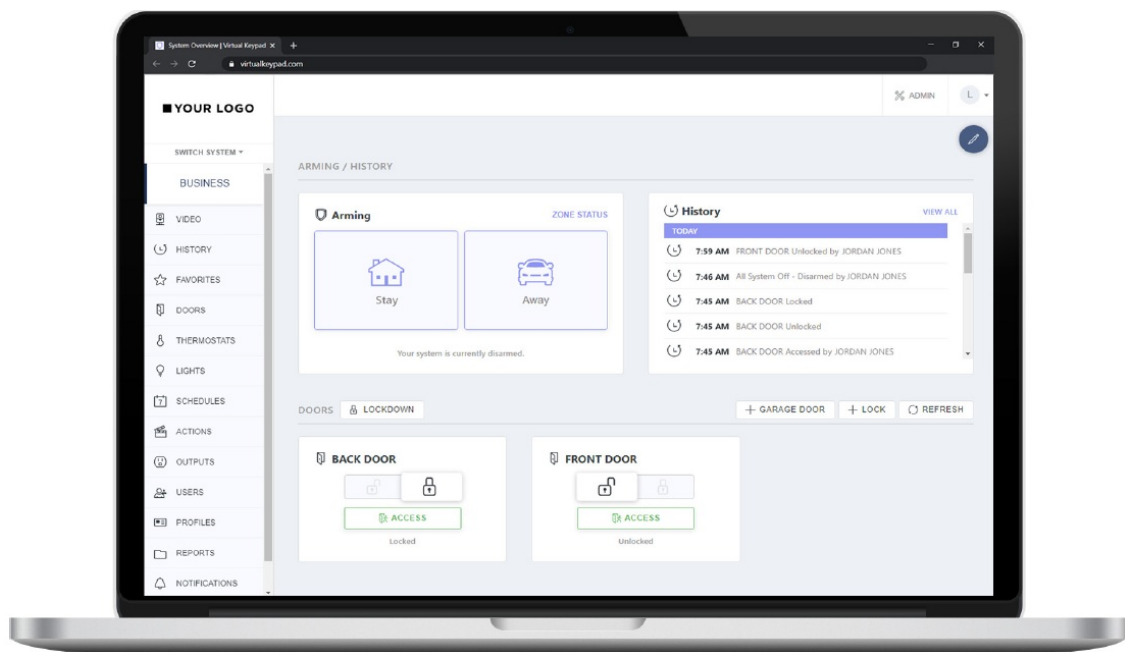
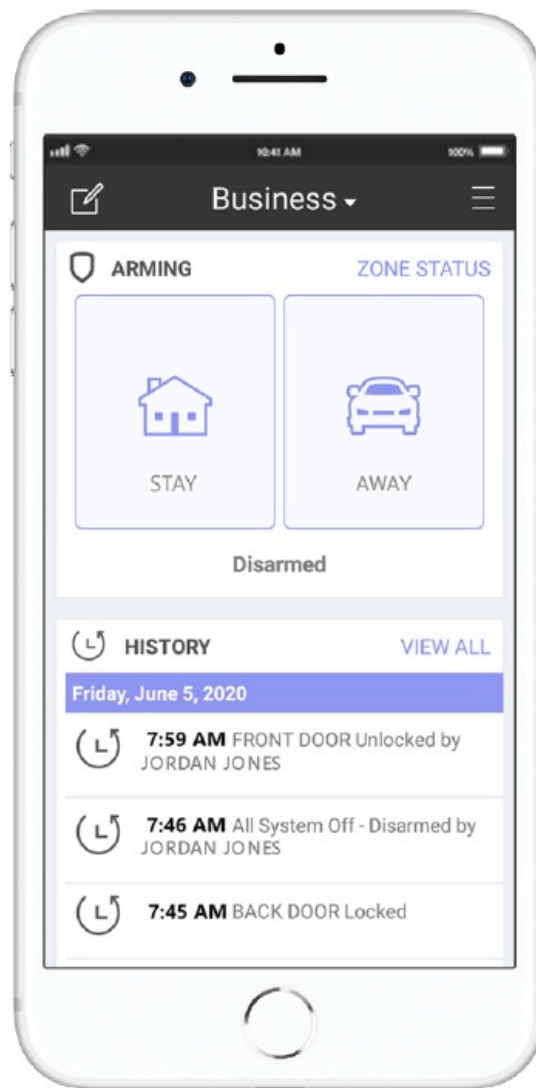
REFERENCE

Virtual Keypad

Virtual Keypad enables users to manage their systems remotely, including arming, disarming, viewing zone status, bypassing zones, viewing history, managing users, and more.

To use Virtual Keypad for remote management, the configuration must meet the following conditions:

- ECP Panels must be programmed as Stay/Away for remote arming and disarming (No Partitions).
- User 2 in the CellComEX must match user 2 in the Vista panel and be used when logging into Virtual Keypad to remotely manage the Vista panel.





VISTA Panel Compatibility

Panel Type	ECP	Remote User Management	Remote Arming/Disarming	Remote Zone Status	Compatible with Compass
VISTA-10SE	Rev 15 or higher	No	No	No	No
VISTA-10P	Yes	Yes	Yes	Yes	Firmware version 2.0 or higher
VISTA-15	Yes	No	No	No	No
VISTA-15P	Yes	Yes	Yes	Yes	Firmware version 5.2 or higher
VISTA-20SE	Rev 12 or higher	No	No	No	No
VISTA-20P	Yes	Yes	Yes	Yes	Firmware version 5.2 or higher
VISTA-20PI	Yes	Yes	Yes	Yes	Firmware version 5.0 or higher
VISTA-21iP	Yes	Yes	Yes	Yes	Yes
VISTA-21iPLTE	Yes	Yes	Yes	Yes	Yes

Note:

Vista 32, 40, 50, 128, 250 are not compatible with ECP Virtual Keypad and eSuite.

Documents / Resources

	DMP COM Series DualCom Universal Alarm Communicator [pdf] User Guide COM Series, DualCom Universal Alarm Communicator, COM Series DualCom Universal Alarm Communicator
	DMP Com Series DualCom Universal Alarm Communicator [pdf] Instruction Manual Com Series, DualCom Universal Alarm Communicator, Com Series DualCom Universal Alarm Communicator, Universal Alarm Communicator, Alarm Communicator, Communicator

References

-  [DMP.com | Welcome to Digital Monitoring Products](https://dmp.com)