

DMP 893A Dual Phone Line Module Installation Guide

[Home](#) » [DMP](#) » DMP 893A Dual Phone Line Module Installation Guide 

Contents

- 1 DMP 893A Dual Phone Line Module
- 2 INSTALL THE MODULE
- 3 ADDITIONAL INFORMATION
- 4 Specifications
- 5 Certifications
- 6 Documents / Resources
- 7 Related Posts



DMP 893A Dual Phone Line Module

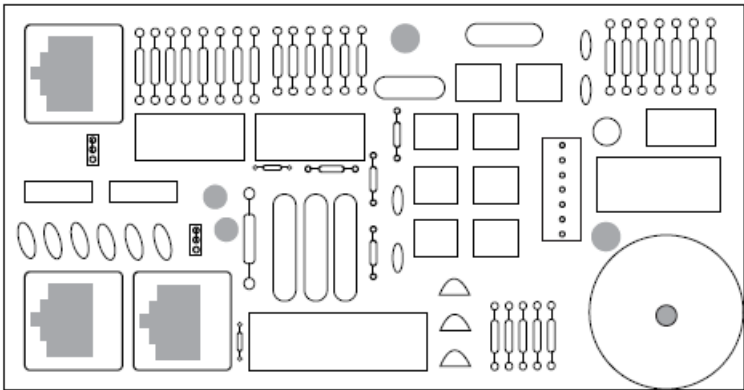


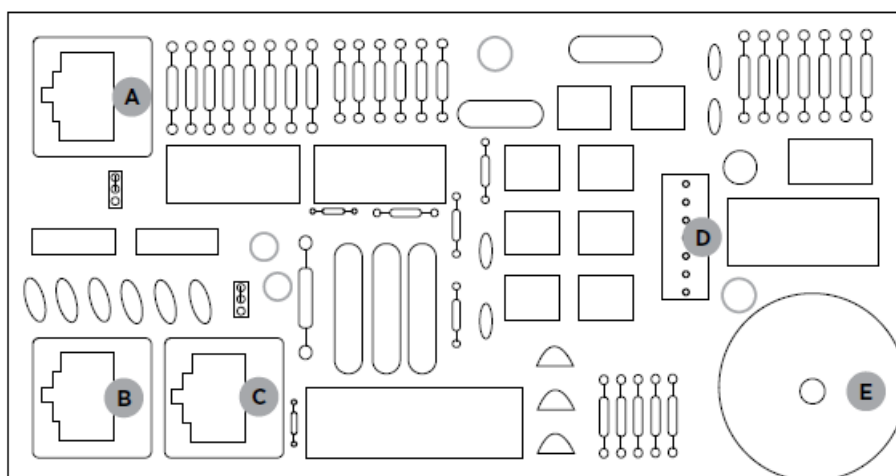
Figure 1: 893A

DESCRIPTION

Phone Line Monitor

The 893A uses a phone line monitor for the main and backup phone lines. Before sending a report, the 893A verifies that the main phone line is working. If the line is bad, the module tests the backup phone line. The 893A sends the report on the first working phone line.

The phone line monitor has a two-minute trouble delay and a one-minute restore delay. Phone line trouble is displayed in the keypad Status List as a System Trouble. At least one keypad on the system must be programmed to display system troubles in the Status List.



- **A:** 893A to Panel Phone Line Connector
- **B:** 893A MAIN to Phone Block
- **C:** 893A BACKUP to Phone Block
- **D:** 893A Connector to Panel Connector
- **E:** DS1 Buzzer

Two Line Digital Dialer

You can configure the 893A to provide two lines of digital dialer for XR150/XR550 Series panels. The MAIN modular jack is used for the primary dialer. The BACKUP modular jack is used for the secondary digital dialer line.

Caution: To reduce the risk of fire, use only 26 AWG or larger telecommunication line cord, such as DMP Model 356 Series Phone Cords.

Processor Fail Buzzer

The 893A Module also monitors the panel CPU and sounds a trouble buzzer whenever the panel is reset or the processor stops functioning. The 893A Module also monitors the keypad bus and sounds a trouble buzzer whenever the keypad bus fails to operate.

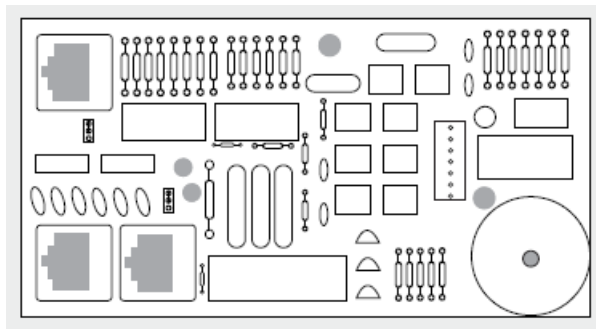
Jumper Settings

There are two sets of jumpers on the 893A Module. For Digital Dialer, set both jumpers to DD. Refer to Figure 3 for jumper locations.



Figure 4: Jumpers Set to DD

Specifications



- Operating Voltage: 12 VDC from the panel
- Current Draw:
 - 35.5 mA Normal Operation
 - 110 mA Processor Fail Buzzer On
- The maximum telephone line impedance is 100 Ohms.

Certifications

FCC Part 15

FCC Part 68 Registration ID CCKUSA-18660-AL-R California State Fire Marshal (CSFM)


New York City (FDNY)

2500 North Partnership Boulevard

Springfield, Missouri 65803-8877

800.641.4282 | DMP.com

Documents / Resources

	<p>DMP 893A Dual Phone Line Module [pdf] Installation Guide</p> <p>893A, Dual Phone Line Module</p>
-------------------------------------------------------------------------------------	---------------------------------------------------------------------------------------------------------------------