

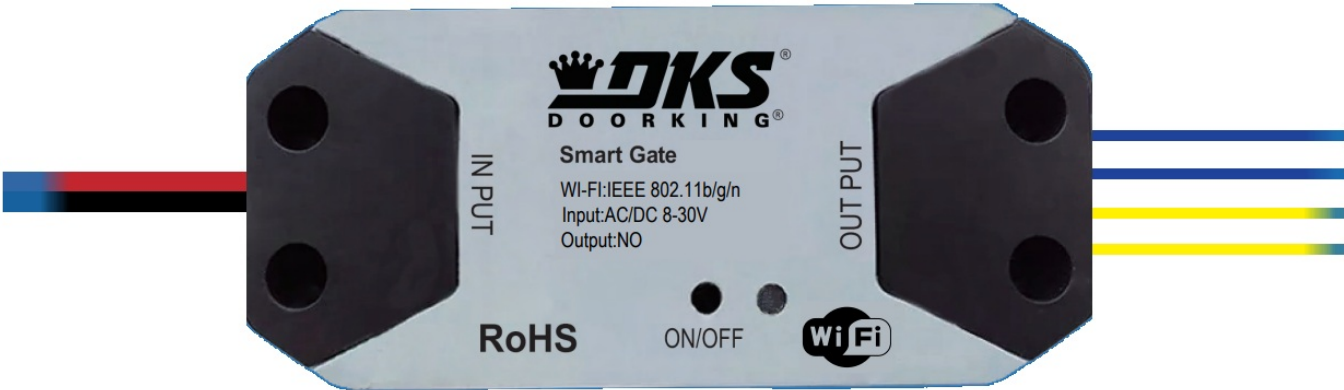


DKS Tony 2023-6-26 Smart Gate Controller User Manual

[Home](#) » [DKS](#) » DKS Tony 2023-6-26 Smart Gate Controller User Manual 



Smart Gate Controller
Monitor and control your gate from anywhere



User Manual

Contents

- 1 Tony 2023-6-26 Smart Gate Controller
- 2 WHAT'S IN THE BOX
- 3 Set up your DKS Smart Connect account
- 4 INSTALLATION OVERVIEW
- 5 Preparation before installation
- 6 Add Smart gate device to DKS Smart Connect app
- 7 POWER OFF your existing gate operator
- 8 DoorKing Smart Gate Controller
- 9 Common Voice Commands (US)
- 10 Link Smart Life account to Alexa
- 11 Link DKS Smart Connect account to Google Home
- 12 Set up Siri to control the Doorking Smart Gate
- 13 Documents / Resources
- 14 Related Posts

Tony 2023-6-26 Smart Gate Controller

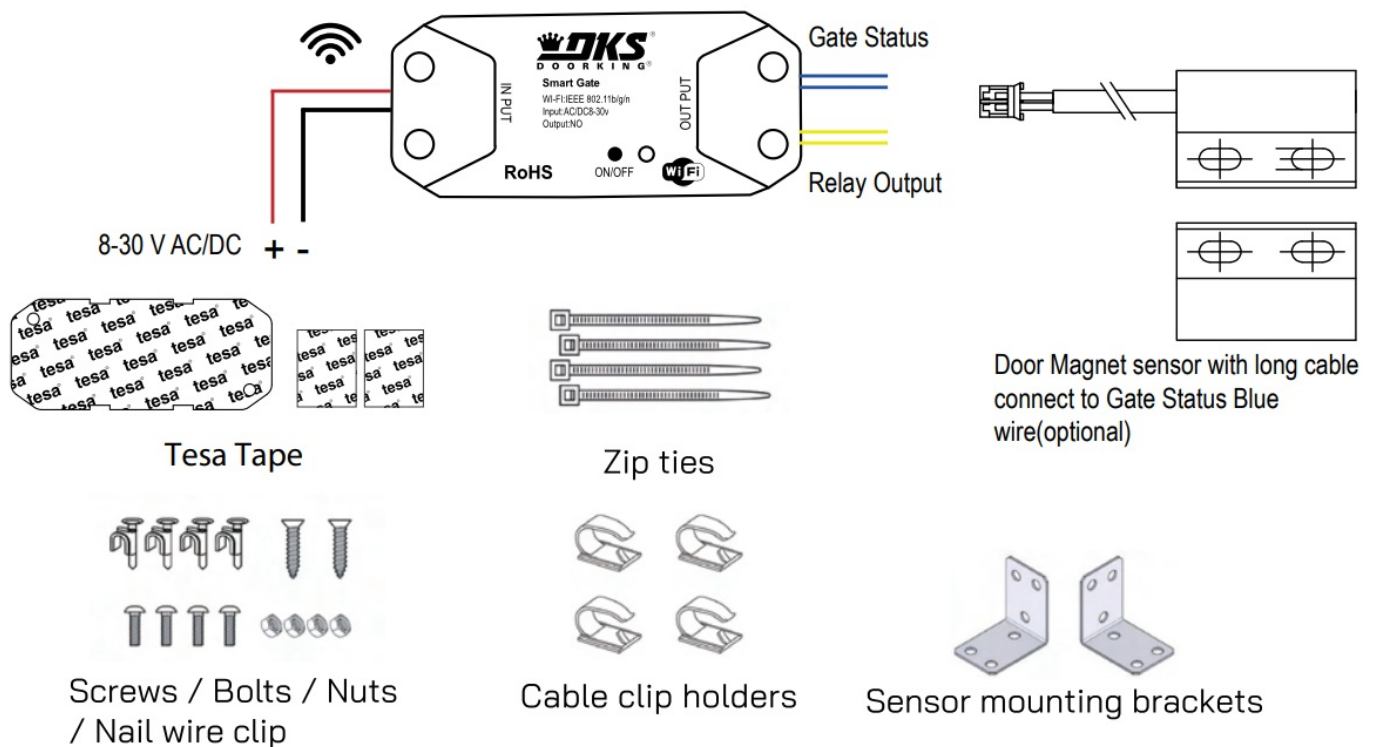


WARNING

TO PREVENT SERIUOS INJURY OR DEATH FROM YOUR MOVING GATE:

- DO NOT let children use or play with the Smart Gate device or app.
- ONLY operate your Smart Gate device when you are in clear view of your gate, and you have verified that there are no objects obstructing the operation of the door.
- ALWAYS wait for the gate to complete its cycle before leaving the area.

WHAT'S IN THE BOX



Set up your DKS Smart Connect account

1. First, download DKS Smart Connect app for your iOS or Android device.

- Before setting up your Alarm, make sure you have the latest version of DKS Smart Connect from the app store



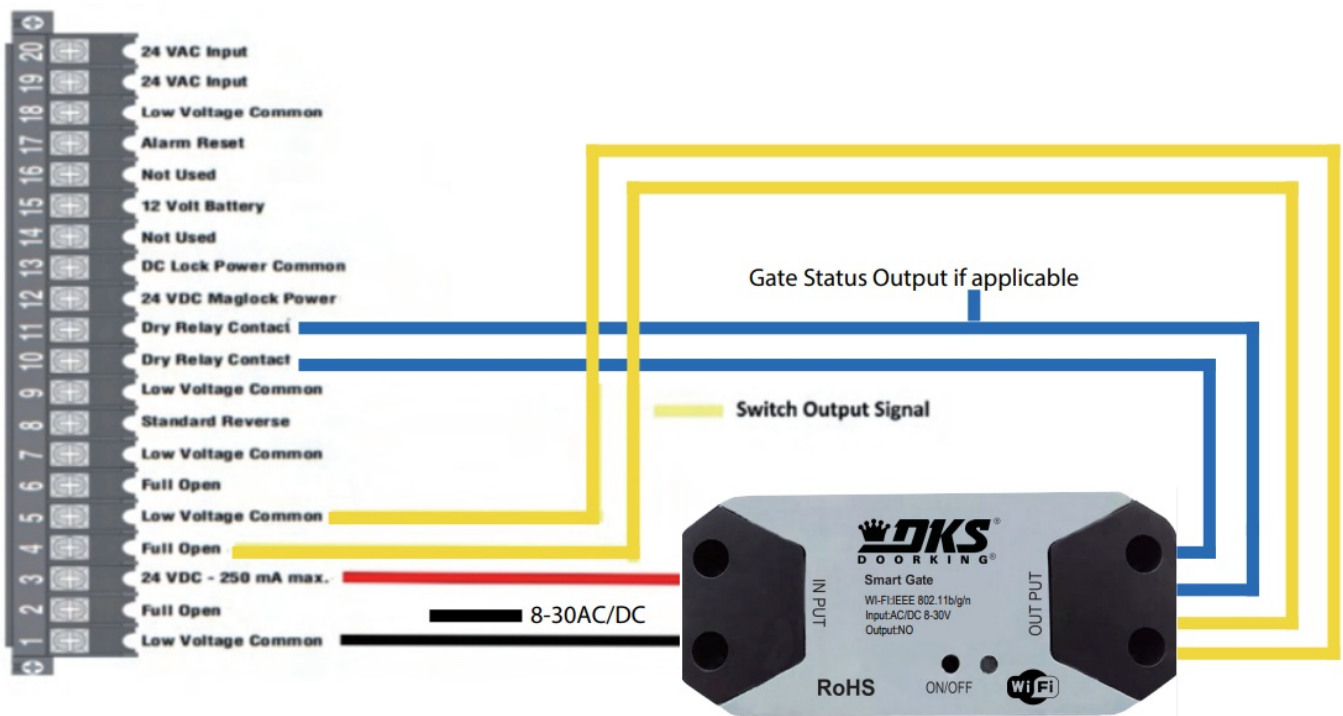
<https://qr.page/g/1C0j40pwoTI>

2. Next, create your account.

- If you're new to Smart Life, tap Sign up to create account. Enter your mobile phone or email address, then tap Get Verification Code, enter the code you receive in your mobile phone or email to set up the password.
- If you already have a Smart Life account used for other devices, tap Log in with Existing Account.

INSTALLATION OVERVIEW

Please refer to gate operator manual for proper input/output connections
Relay contact set for N.C, relay output set to activate when gate is fully open



Preparation before installation

1. Check your Wi-Fi ("Only supports 24 Ghz WiFi") under Check the Wi-Fi signal at the gate, where the Smart Gate Controller will be mounted.



2. Power up your device

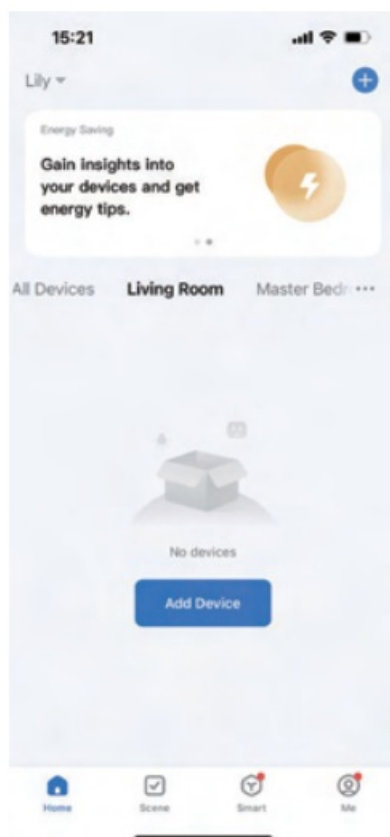
Find a convenient location and power the Smart Gate Controller by connecting it to an 8-30V power source (AC/DO).

The LED indicator will start blinking.

Add Smart gate device to DKS Smart Connect app

*** Turn on smart phones bluetooth and Connect smartphone to your home WIFI network before the following steps. Have your SSID WiFi name ready, with WiFi password if asked.

1. Launch the app and tap the Plus (+) in the top right corner to add a Controller device.
2. Press Smart Switch Button until LED flashes. Tap Go to add.



3. Enter your home Wi-Fi name and password, then tap Confirm.
4. Now your DoorKing Smart Gate is successfully added to DKS Smart Connect app. Tap Done..



POWER OFF your existing gate operator

- Connect the two Yellow wires of the controller to the gate operator open input terminals
- Connect the Red wire to 8-30 VACVDC positive
- Connect the Black wire to common
- Connect the two Blue wires to the gate operator status output relay if applicable

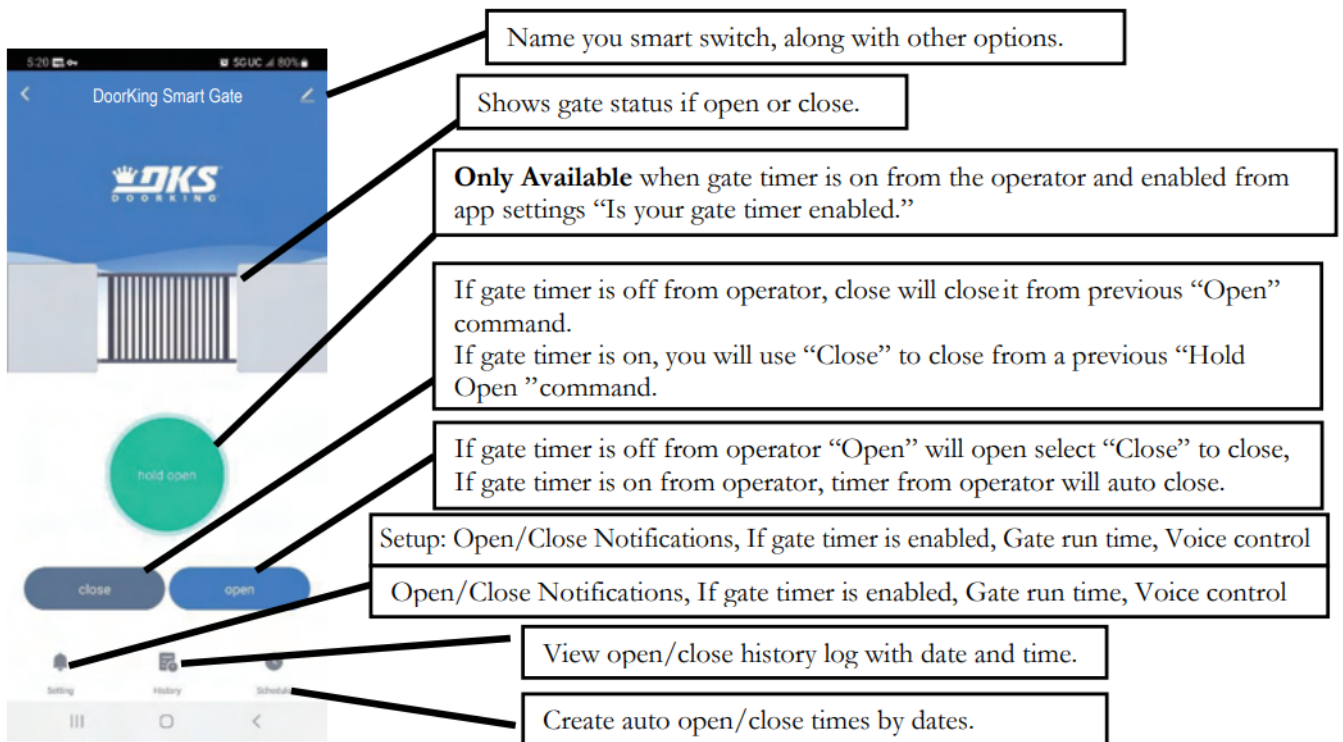
DoorKing Smart Gate Controller

Function Description of the Operation Interface DKS Smart Connect App




Main Screen:

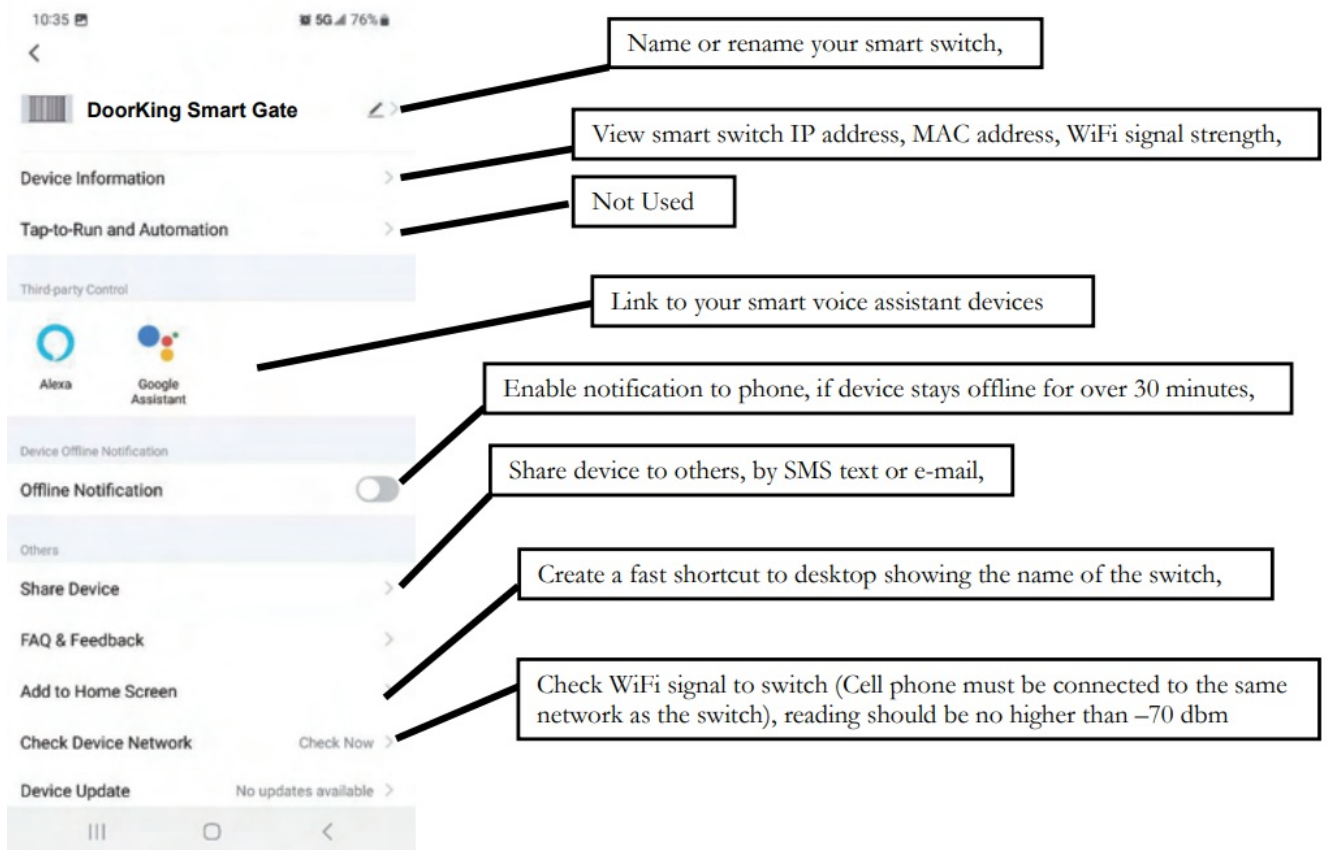
- Select your added device to control your gate or to edit
- Main control screen.



Edit name and other options:

- Select  to make adjustment as described below.
- NOTE: These options are only available when logged as the primary user:

Rename Device, Device Info, Share Device, Add to home screen, Check device network, Device Update




- Device can be removed from here.

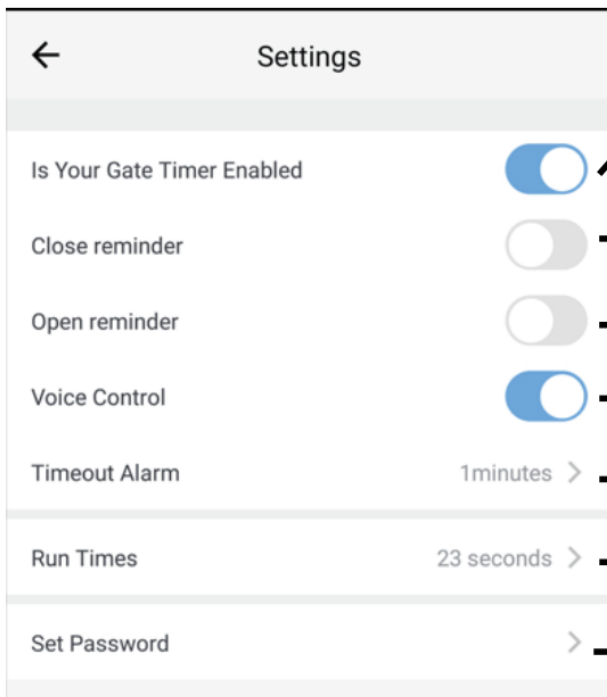


Settings:



Setting

- Select  to make adjustments as described below



Select your gate operating closing settings:

- If gate operator is set to time out and close- Move slider to the right enable (Yes)
- If gate operator timer to close is off – Move slider to – left disable (No)

Enable/Disable notifications to cell phone,

Enable voice assistant devices (Alexa, Google)

Not Used

Set gate open/close limit timing so if not reached after the set time, a warning message will pop up


Set for Google Assistant if used.

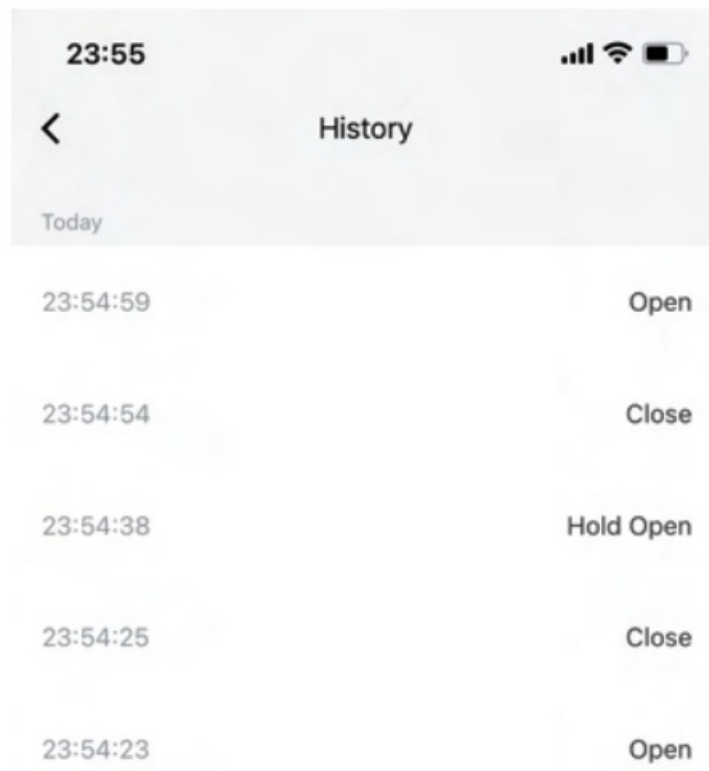


History:



History

- Select  to view log history of Open/Close/Hold Openevents with date and time.



Schedule:



- Select **Schedule** to set an auto open / close time .
- Create a beginning time with days the gate should go open
- Create an end time with days the gate should go back to close

Common Voice Commands (US)

Alexa

- Alexa, open the DoorKing Smart Gate.
- Alexa, close the DoorKing Smart **Gate**.



Siri

- Hey Siri, open the DoorKing Smart Gate.
- Hey Siri, close the DoorKing Smart Gate.



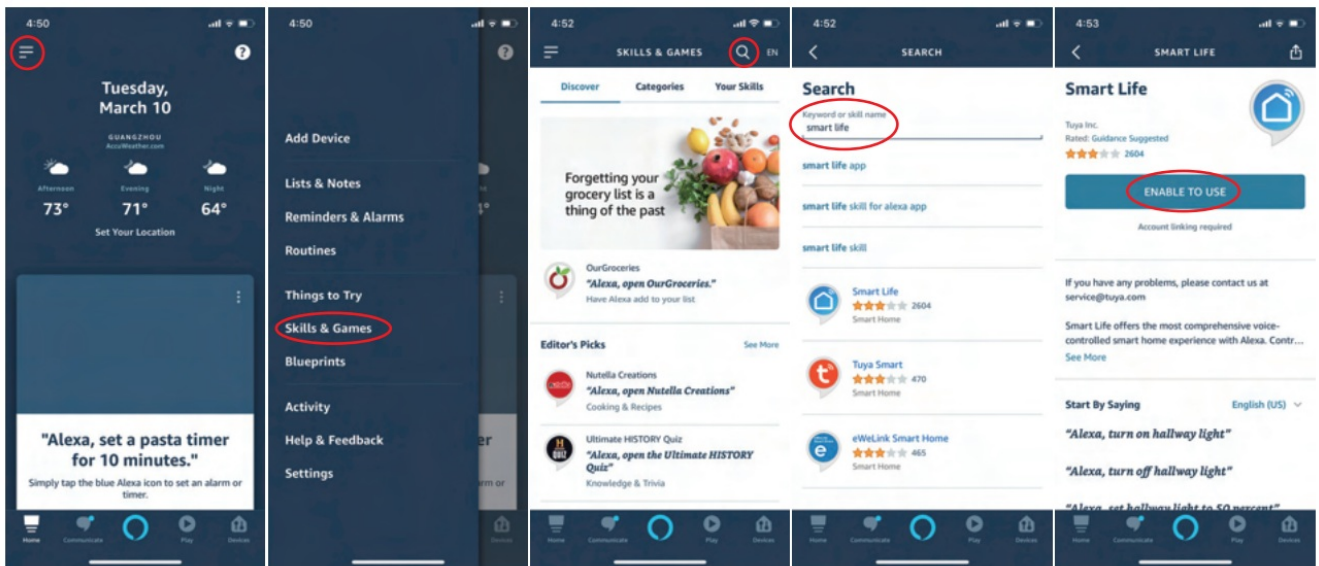
Google Home

- Hey Google, open the DoorKing Smart Gate.
- Hey Google, close the DoorKing Smart Gate.

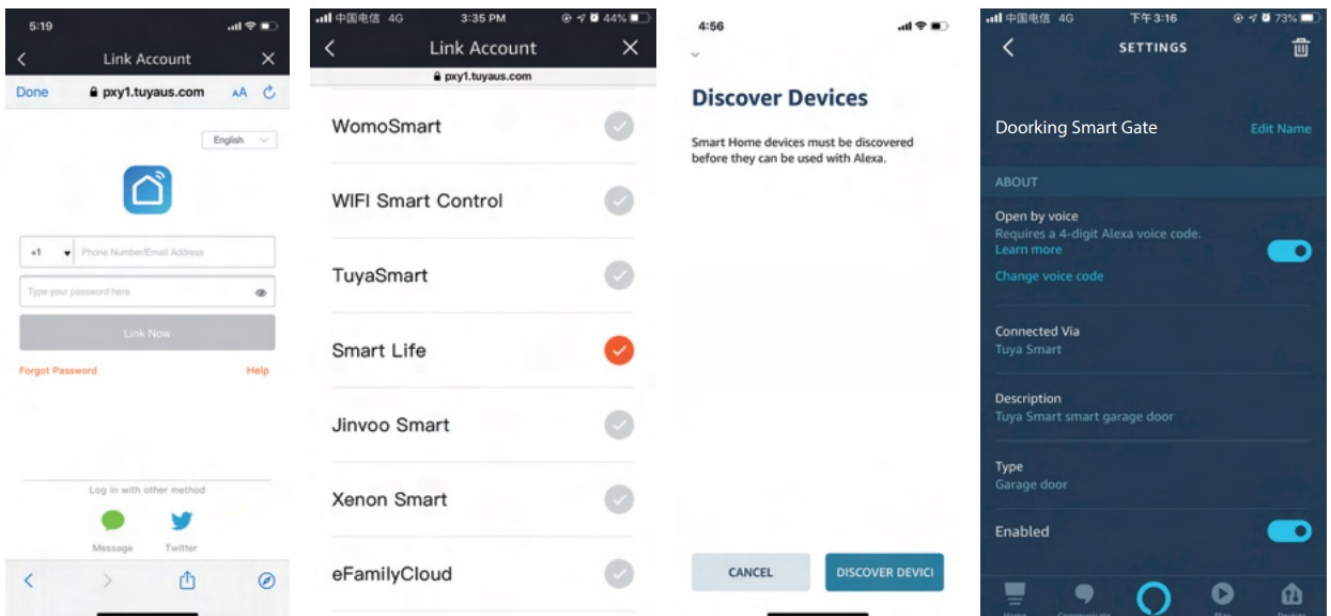


Link Smart Life account to Alexa

1. Launch Amazon Alexa app. Tap Skills & Games in the hamburger menu, then search Smart Life. Select Smart Life and tap ENABLE TO USE.



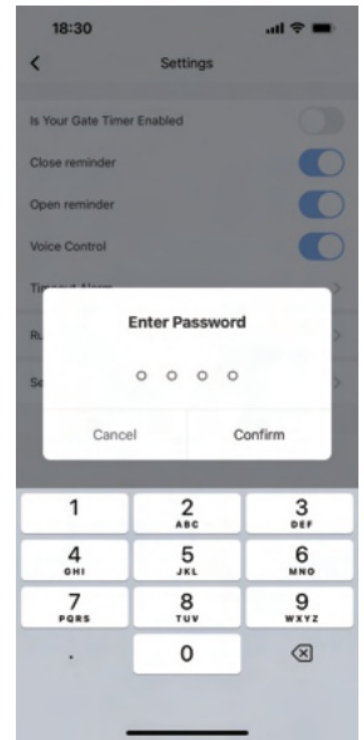
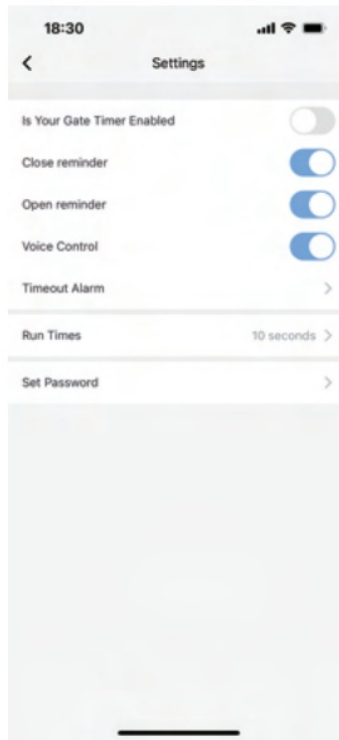
2. You will be redirected to the account link page. Type in your Smart Life account and password. Then tap Link Now to link your Smart Life account.
3. Select DISCOVER DEVICE. Now the SMART LIFE is link to Alexa. You can set the 4-digit Alexa voice code in Setting.



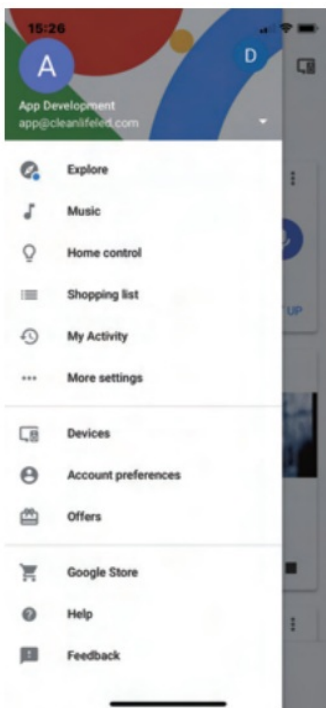
Link DKS Smart Connect account to Google Home

Before link DKS Smart Connect to Google Home:

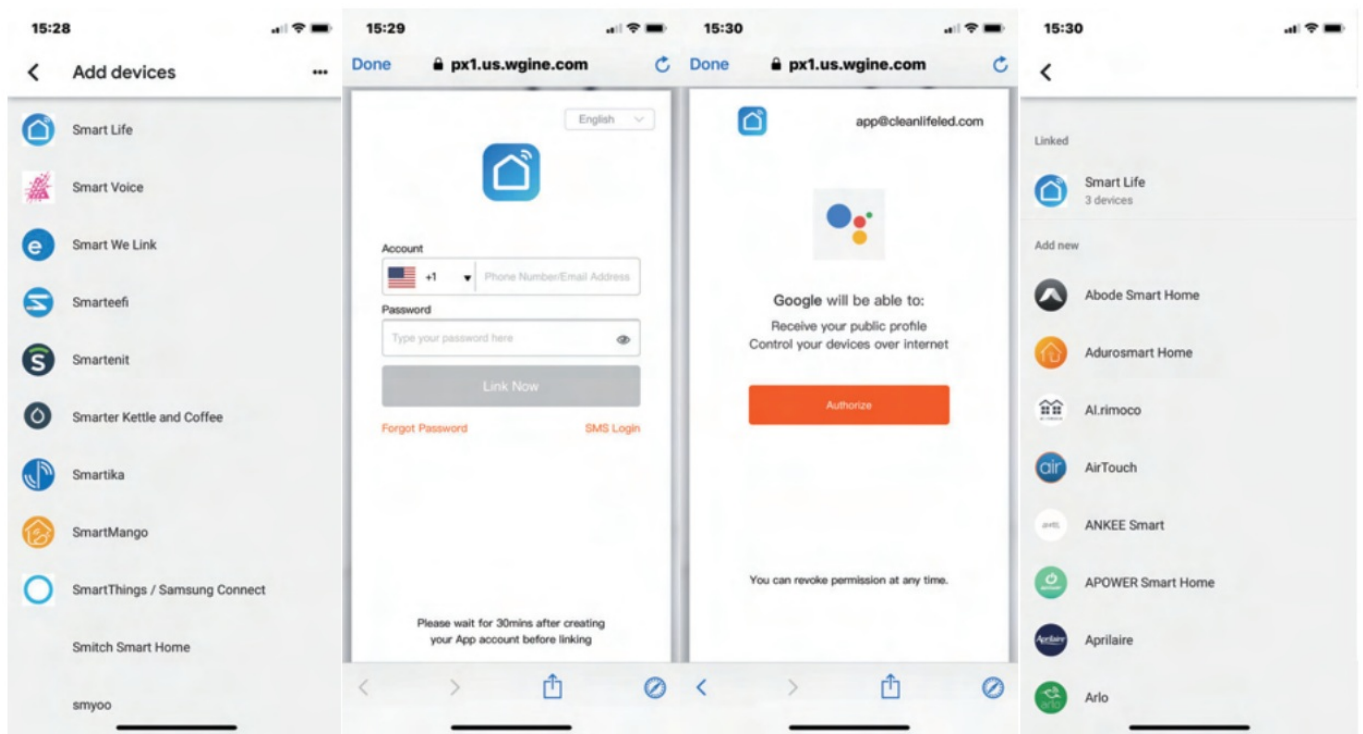
- Launch DKS Smart Connect app, tap "DoorKing Smart Gate.
- Tap the ring bell on the top right corner.
- Tap "Set password", enter a password then tap "Confirm".



1. Launch Google Home app.
2. Add your Google Assistant to your Google Home app by selecting the MENU button in the top left corner, and then select Devices.
3. Select Home Control to add Smart Life to your Google Assistant.
4. Select the + icon in the bottom right corner to add Smart Life to your Google Assistant. This will allow you to control all of your Smart Life devices through your Google Assistant.



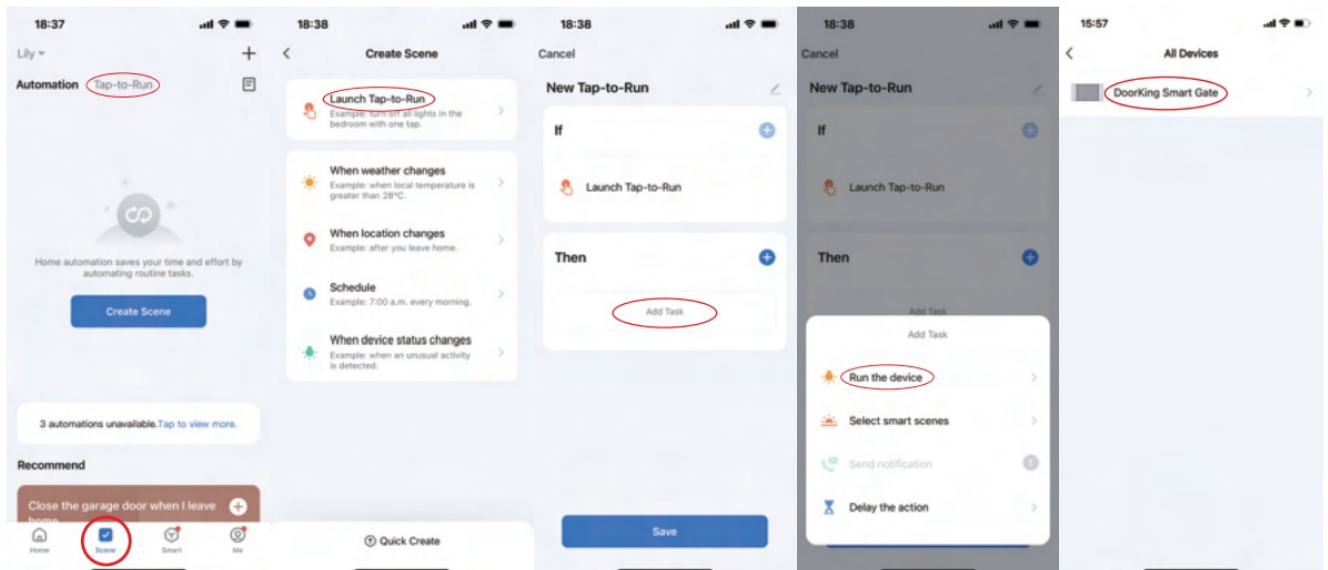
5. Select Smart Life. Enter your account details.
6. Select Authorize to give Google permission to access Smart Life.
7. Your Smart Life Gate devices are now connected to Google.



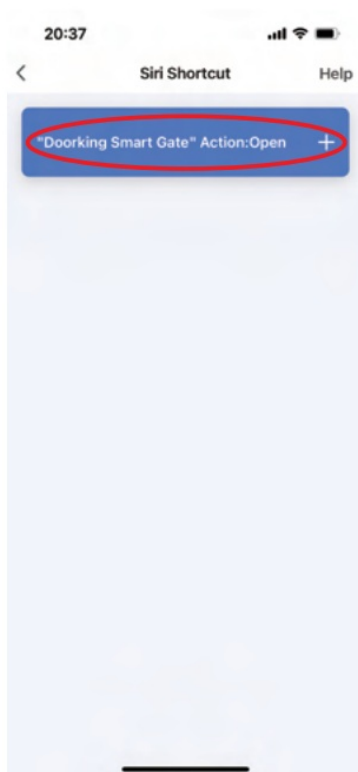
Set up Siri to control the Doorking Smart Gate

Siri can only be used when logged as primary user

1. Log in the * DKS Smart Connect app, select "Scene " at the bottom.
2. Tap * +", Select "Launch TapToRun "Select" Add Task *, Select "Run the device"
3. Select "DoorKing Smart Gate ", then select * Action *, then select "Open" or *close *, click* Save *, click * Next", and click * Save "again (please note Siri can't support control "Hold Open ")



4. Back to the "Scene " page, tap the "Add to Siri " icon at the right bottom. Select the tab "DoorKing Smart Gate " Action: Open or Close.
5. Select* Done"". Now you can say* the magic word" control the DoorKing Smart Gate.



Documents / Resources

	<p>DKS Tony 2023-6-26 Smart Gate Controller [pdf] User Manual</p> <p>Tony 2023-6-26 Smart Gate Controller, Tony 2023-6-26, Smart Gate Controller, Gate Controller, Controller</p>
--	---

[Manuals+](#).