

## DK CUSTOM 07-13 Push-Button LED Ignition Switch Instructions

[Home](#) » [DK CUSTOM](#) » DK CUSTOM 07-13 Push-Button LED Ignition Switch Instructions 



**Push-Button LED Ignition Switch**  
**Fits 1995-2013 Sportster Models (Fits Stock Housing)**  
**Fits DLX Coil Relo Sportster Models (07-13)**  
**Fits Dyna-Softail Console/Dash Mount Ignition**

### Contents

- [1 INSTRUCTIONS](#)
- [2 Posi-Lock Connector](#)
- [3 Documents / Resources](#)
  - [3.1 References](#)
- [4 Related Posts](#)

## INSTRUCTIONS

**\*\*\*READ ALL THE INSTRUCTIONS FOR YOUR APPLICATION BEFORE PROCEEDING\*\*\***

### Parts included:

- 1 Push-Button LED Ignition Switch
- 2 Posi-Lock Connectors
- 2 Posi-Tap Connectors (Sportsters only use 1 of these)
- 3 Heavy Duty Zip Ties

### Ignition Installation for 1995-2013 Sportster Models (Fits Stock Housing):

1. This Ignition is intended for use in the factory ignition housing and instructions will be for that installation.

However, this unit can be used in many custom applications as well.

2. Remove Main Fuse OR disconnect the battery before proceeding.
3. Remove the Ignition Switch Face Nut (chrome ring around switch), and remove stock ignition from the housing.
4. Install your new Push-Button Led Ignition into the stock housing. This is done by removing the nut from the ignition, sliding the ignition in from the front of the housing (feeding the wires thru the switch housing), and reinstalling the nut onto the ignition from the rear of the housing. (Some housings may require slight clearance for the ignition to be installed. This can easily be done with a file, razor blade, or drill bit, so the new ignition switch will slide in easily.)
5. Tighten the nut securing the ignition in the housing using needle nose pliers.

**Continue on to Wiring Section Below**

#### **Ignition Installation For DLX Billet Coil Relocation Sportster Models:**

1. This Ignition Kit is intended for use with the DLX Billet Coil Relocation for 07-13 Sportsters. After reading the instructions for the installation of the Coil Relocation, proceed to the following steps. (Switch must be installed in DLX Bracket prior to DLX Bracket being mounted onto bike)
2. Remove Main Fuse OR disconnect the battery before proceeding.
3. Remove the Ignition Switch Face Nut (chrome ring around switch), and remove stock ignition from the housing.
4. Install your new Push-Button Led Ignition switch into the supplied Billet Ring. This is done by removing the nut from the LED Switch, sliding the switch in from the front of the Ring (feeding the wires thru the Ring), and reinstalling the nut onto the switch from the rear of the Ring.
5. Tighten the nut securing the switch in the Ring using needle nose pliers.

**Continue on to Wiring Section Below**

#### **Ignition Installation For Dyna & Softail Models:**

1. This Ignition Kit is intended to replace the barrel key switch found on many Dyna & Softail Models, where that switch is in the Dash/Console on the Gas Tank. (this kit will not work with CanBUS bikes)
2. Remove the Main Fuse OR disconnect the battery before proceeding.
3. Remove the Instrument Panel Console (Dash) per the instruction in your Service Manual. This will give you access for the removal of your (Factory) Barrel Key Ignition Switch.
4. Remove the factory switch, saving the 4 factory fasteners, they will be reused.
5. Remove the wires from the factory switch. 6. Install your new Push-Button Led Ignition switch into the supplied Billet Ring. This is done by removing the nut from the LED Switch, sliding the switch in from the front of the Ring (feeding the wires thru the Ring), and reinstalling the nut onto the switch from the rear of the Ring.
6. Tighten the nut securing the switch in the Ring using needle nose pliers.

**Continue on to Wiring Section Below**

#### **Wiring Section Instructions- ALL APPLICATIONS:**

\*In the below steps it is crucial that the main fuse is pulled or the battery is disconnected, not doing so is likely to result in damage to the bike's electrical system.

1. Since there is no plug on your ignition we are going to have to cut the wires leading to the factory ignition switch. A good place to cut them is about 2" back from the ignition leaving you the option to reuse the ignition in

the future.

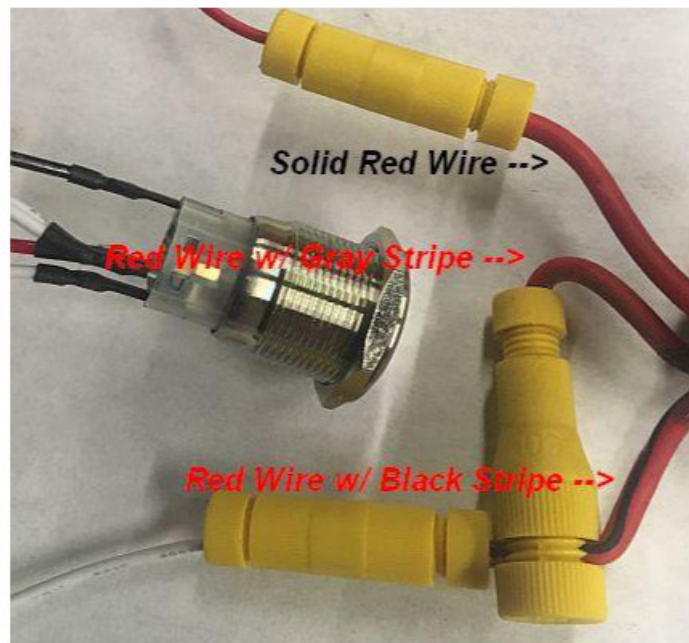
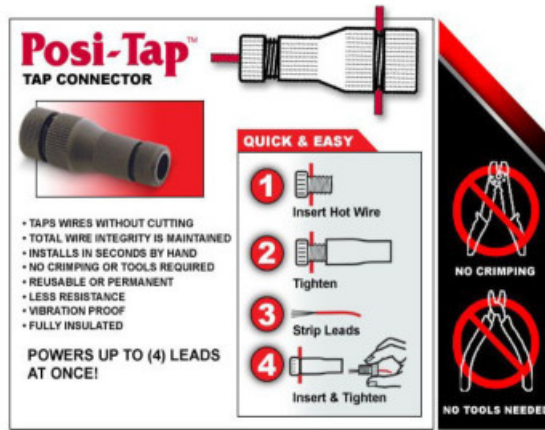
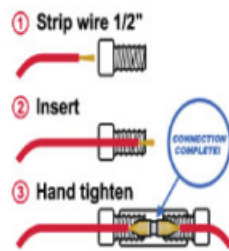
2. Using 1 of the supplied Posi-Lock connectors connect the solid red wire (or wire with red tape) from your new ignition to the solid red wire that led to the stock ignition. See the Photo below for Posi-Lock instructions.
3. Next, install the small side of the supplied Posi-Tap connector to the end of the red wire with the gray stripe (on the bike). Then using the large end of the same Posi-Tap connector tap into the red wire with the black stripe (on the bike) about 2" from the end of the wire. See the photo below Posi-Tap instructions.
4. Using the other supplied Posi-Lock connector connect the white wire (or wire with white tape) from your new ignition to the end of the red wire with the black stripe.
5. The solid black wire, coming from the new Push-Button LED Switch, is ground and needs to be connected to the grounded fastener of your choice on the frame or engine, OR use the second Posi-Tap to connect to an existing ground wire.
6. Verify all wires are routed and secured with the supplied zip ties in a safe location not making contact with components that could damage the wires from heat or chafing.
7. Replace Main Fuse OR reconnect the battery and test the functionality of your new ignition switch.
8. On the Sportster DLX application, install the ring into the bracket, using the 4 supplied fasteners & lock washers. Now follow the instructions included with the DLX Coil Relocation Kit.
9. On the Dyna-Softail, install the ring into the console, using the 4 fasteners set aside. Then re-install the Console/Dash per your Service Manual Instructions.
10. Go for a ride!

#### **General Notes:**

- The rider's safety depends on the correct installation of this kit. Hooking wires up incorrectly can damage the motorcycle's electrical system. Please read & follow the Instructions above. Please do not attempt if you have any doubts of your ability to install it.
- It is a good practice to use a towel to cover the painted surface of your gas tank while doing this work on your Console.
- Use a blue thread locker on all threads.
- We recommend using dielectric grease on all electrical connections.

#### **Posi-Lock Connector**

## EASY AS ①②③



### CANbus Adapter for Push-Button LED Ignition Switch For Use on any CANbus Model Instructions

#### INSTRUCTIONS

These Instructions are meant to be used in conjunction with the instructions provided with the Push Button LED Switch.

**\*\*\*READ ALL THE INSTRUCTIONS BEFORE PROCEEDING\*\*\***

#### Parts included:

1. Adapter for Push-Button LED Ignition Switch
2. Posi-Lock Connector (Pre-Installed onto adapter)
3. Posi-Tap Connectors (1 of which is Pre-Installed onto the adapter)

## Wiring Section Instructions- CANbus Models

\*In the below steps, it is crucial that the main fuse is pulled or the battery is disconnected, not doing so is likely to result in damage to the bike's electrical system.

1. When you make it to the wiring section of your new Push-Button ignition switch install, you will have likely noticed that you have a two-wire plug on the back of your ignition switch. This plug can be removed from the factory ignition switch and the factory switch removed.
2. After that, your new Push-Button LED Switch may be installed per the instructions supplied with it.  
\*\*\*Overview of wiring: The two-wire plug referenced in step 1 above is on the bike ignition harness. The Red wire from the Push-Button switch goes to the Black/Green wire from the bike ignition harness. The White wire from the Push-Button switch goes to the CANbus Adapter and then to the White/Blue wire from the bike harness. The Black wire from the Push-Button goes to any fused 12v+ wire. \*\*\*Note\*\*\*\*\* In typical wiring applications on 12-volt systems, a black wire is typically ground. It is very important to note that the black wire from the Push-Button LED Switch is not ground. It is the hot wire for power to the Push-Button LED.
3. Using the post-tap pre-installed onto one side of the CANbus Adapter, connect the Adapter to the White/Blue wire from the bike harness. Then, on the opposite side of the Adapter, use the pre-installed posi-lock to connect the Adapter to the white wire on the Push-Button LED Switch. See the photo at bottom of the Push-Button Switch instructions for Posi-Tap instructions. Next, using one of the remaining posi-taps in this kit, connect the Red wire from the Push-Button LED Switch to the Black/Green wire on the bike harness.
4. The solid black wire, coming from the new Push-Button LED Switch, is 12v+ and needs to be connected to a fused 12v+ source. Many times in a 12v+ source can be found near your install location or for sure in the fuse panel.  
\*\*\*Note\*\*\*The Black wire on the Push-Button Ignition Switch is not a ground wire, but 12v+, If this is not wired properly the LED light on the switch will not illuminate.
5. At this point, you will want to finish the installation with the instructions supplied with the Push-Button LED Switch.

## General Notes:

- The rider's safety depends on the correct installation of this kit. Hooking wires up incorrectly can damage the motorcycle's electrical system. Please read & follow the Instructions above. Please do not attempt if you have any doubts of your ability to install it.
- It is a good practice to use a towel to cover the painted surface of your gas tank while doing any work on your Console.
- Use a blue thread locker on all threads.
- We recommend using dielectric grease on all electrical connections.

[www.DKCustomProducts.com](http://www.DKCustomProducts.com)

## Documents / Resources

