

# dji T740 RC Plus Remote Controller User Guide

## dji T740 RC Plus Remote Controller

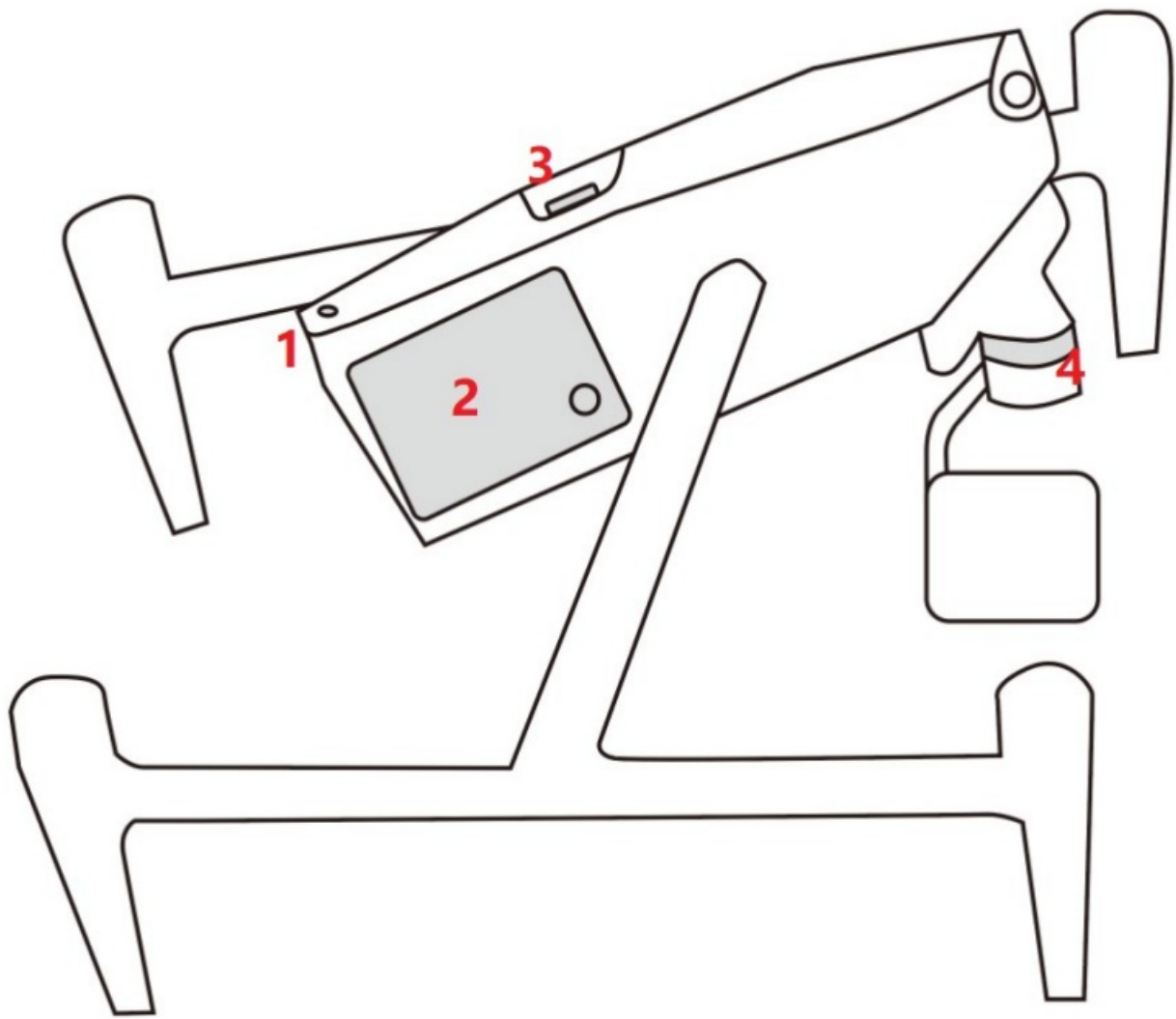
### Contents

- [1 Aircraft](#)
- [2 Overview](#)
- [3 Aircraft Modes](#)
- [4 Remote Controller](#)
- [5 Preparing the Remote Controller](#)
- [6 Preparing the Aircraft](#)
- [7 Mount the Gimbal and Camera](#)
- [8 Installing the SSD](#)
- [9 Getting Ready for Takeoff Linking](#)
- [10 Attaching the Propellers](#)
- [11 Flight](#)
- [12 Manual Takeoff/Landing](#)
- [13 Specifications](#)
- [14 FCC Compliance Notice](#)
- [15 ISED Compliance Notice](#)
- [16 Documents / Resources](#)
- [17 Related Posts](#)

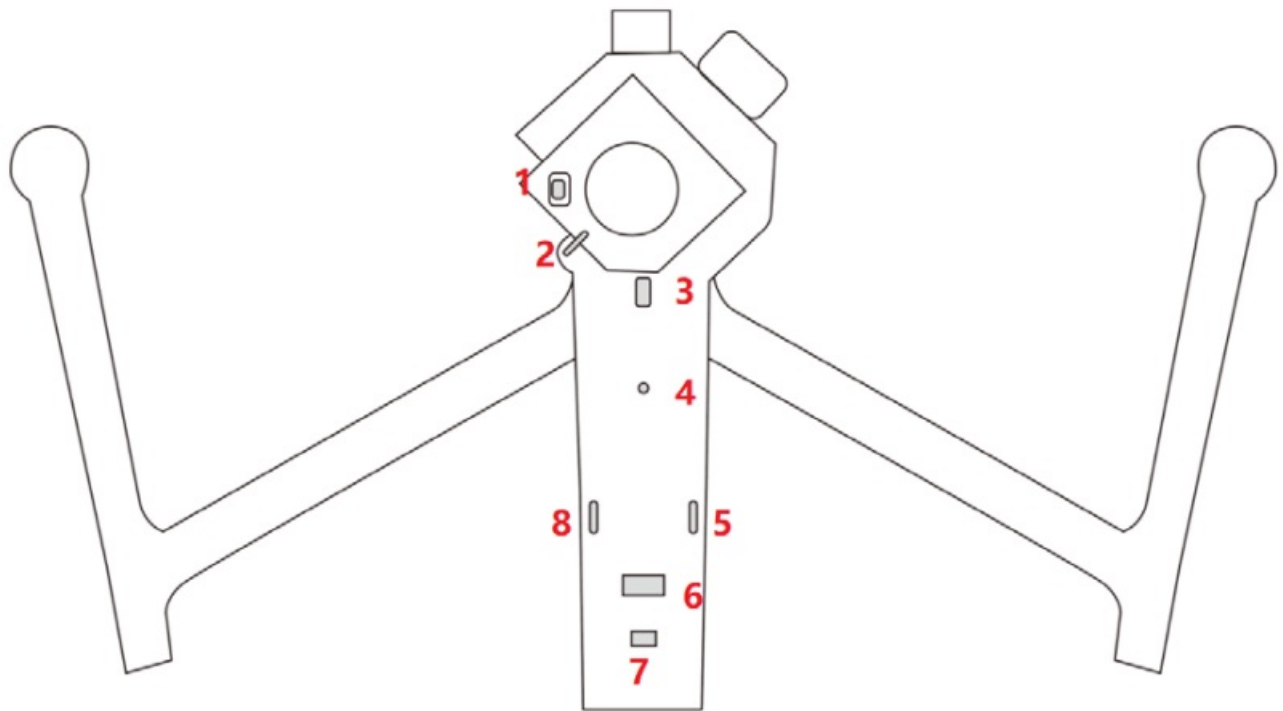
## Aircraft

You are able to shoot multi-angle and high specification photos and create great content with the aircraft.

## Overview

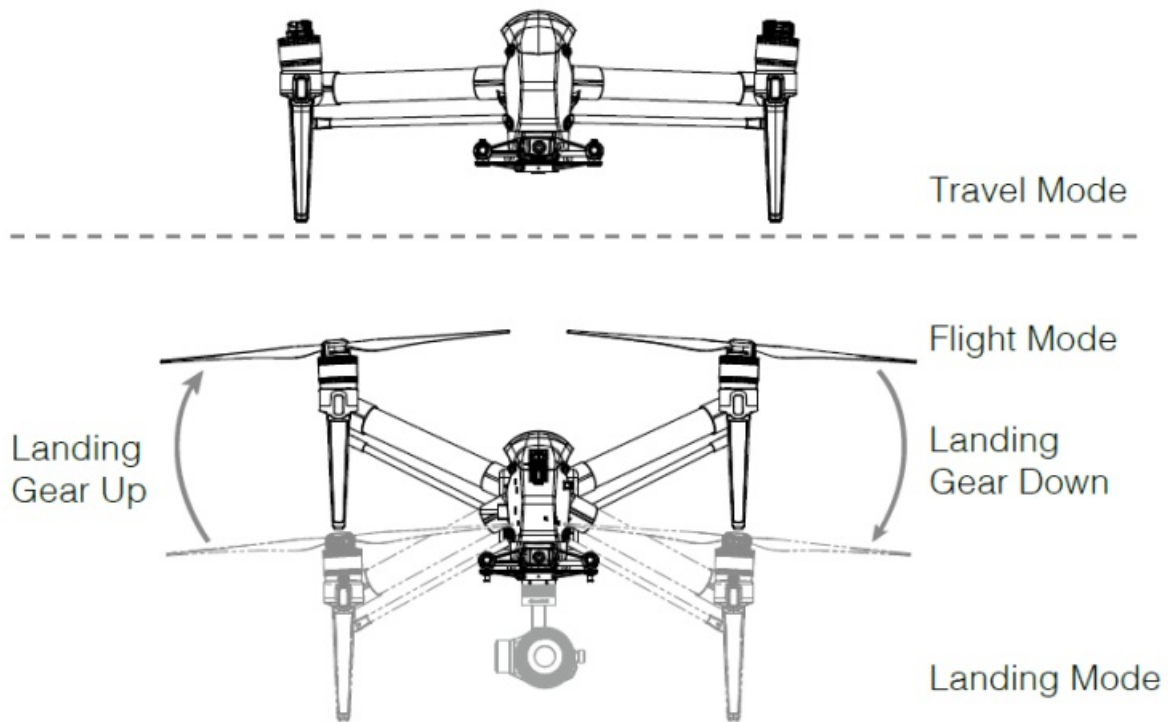


1. Power Button
2. Battery
3. SSD Slot
4. Gimbal Connector



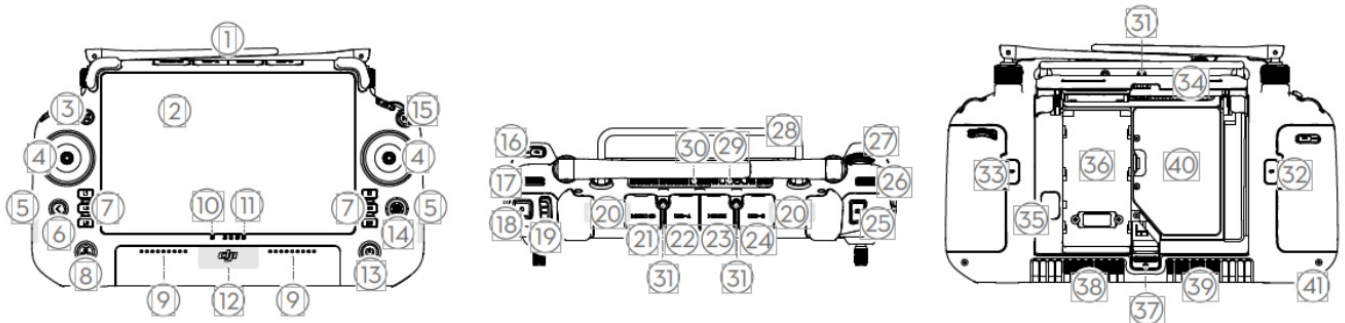
1. Gimbal Release Button
2. Gimbal Lock
3. USB-C Port  
(for data transmission)
4. Screw Socket
5. Earphone Jack
6. Auxiliary Bottom Light
7. USB-C Port (for LiDAR module)
8. USB-C Port (for 4G dongle)

## **Aircraft Modes**



## Remote Controller

The DJI RC Plus remote controller can transmit a live HD view from the camera of an aircraft to display on the touchscreen.



1. External RC Antennas
2. Touchscreen
3. Indicator Button
4. Control Sticks
5. Internal Wi-Fi Antennas
6. Back/Function Button
7. L1/L2/L3/R1/R2/R3 Buttons
8. Return to Home (RTH) Button
9. Microphones
10. Status LED
11. Battery Level LEDs
12. Internal GNSS Antennas
13. Power Button

14. 5D Button
15. Flight Pause Button
16. C3 Button (customizable)
17. Left Dial
18. Record Button
19. Flight Mode Switch
20. Internal RC Antennas
21. microSD Card Slot
22. USB-A Port
23. HDMI Port
24. USB-C Port
25. Focus/Shutter Button
26. Right Dial
27. Scroll Wheel
28. Handle
29. Speaker
30. Air Vent
31. Reserved Mounting Holes
32. C1 Button (customizable)
33. C2 Button (customizable)
34. Rear Cover
35. Battery Release Button
36. WB37 Intelligent Battery
37. Rear Cover Release Button
38. Alarm
39. Air Intake
40. Dongle Compartment
41. Remote Controller Strap Bracket

## **Preparing the Remote Controller**

Check battery level: press once.

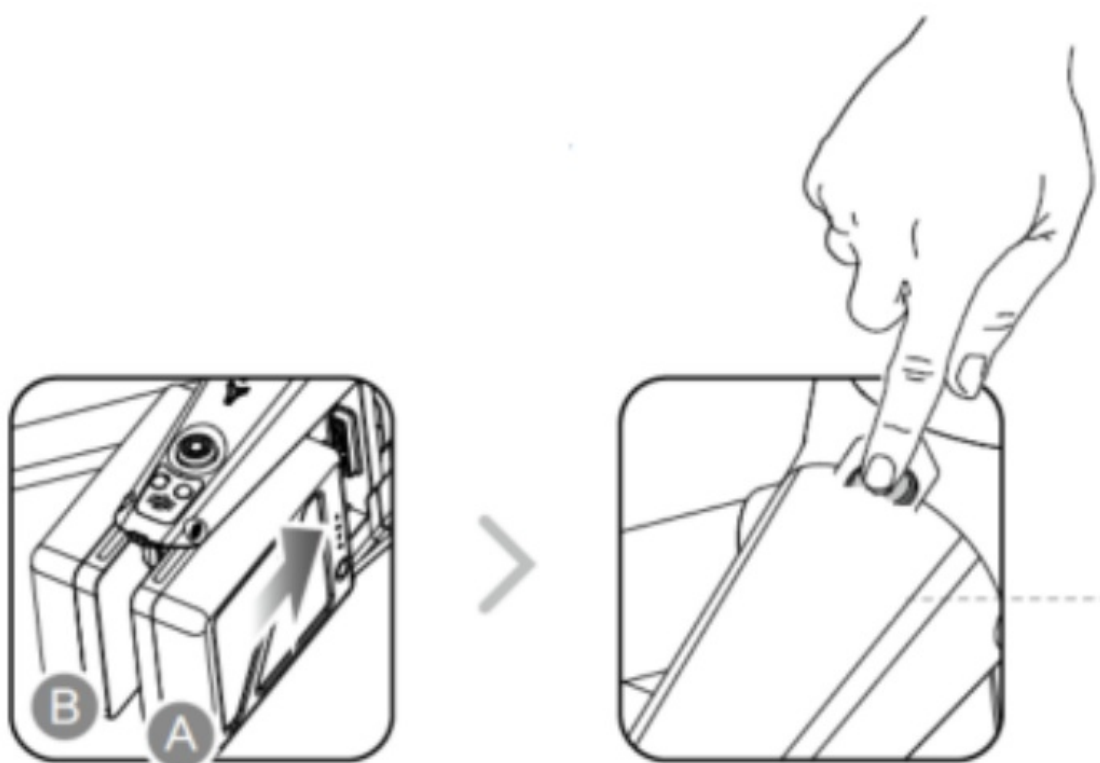
Power on/off: press and then press and hold.

The remote controller needs to be activated before using for the first time. Follow the prompts to activate.



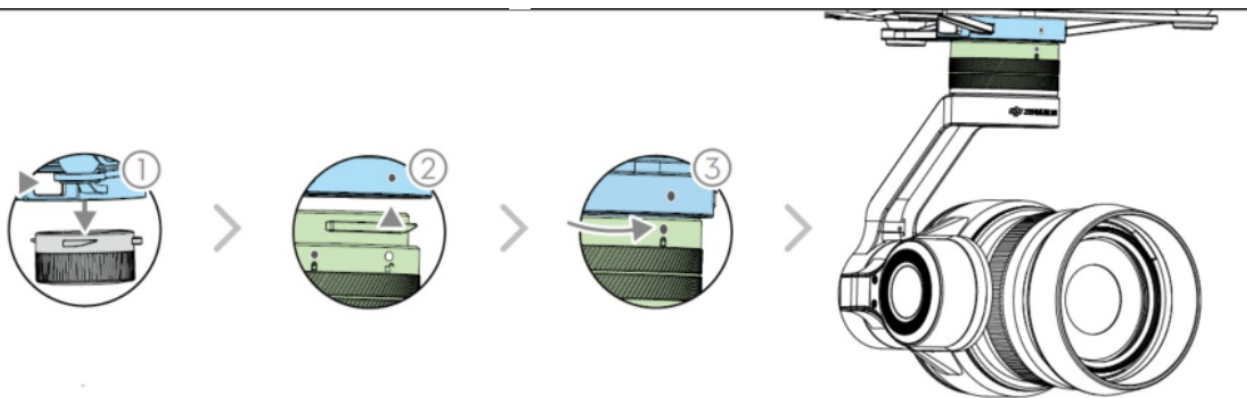
## Preparing the Aircraft

- Insert the batteries;
- Press the power button a minimum of five times. The aircraft will be transformed to the Landing Mode.

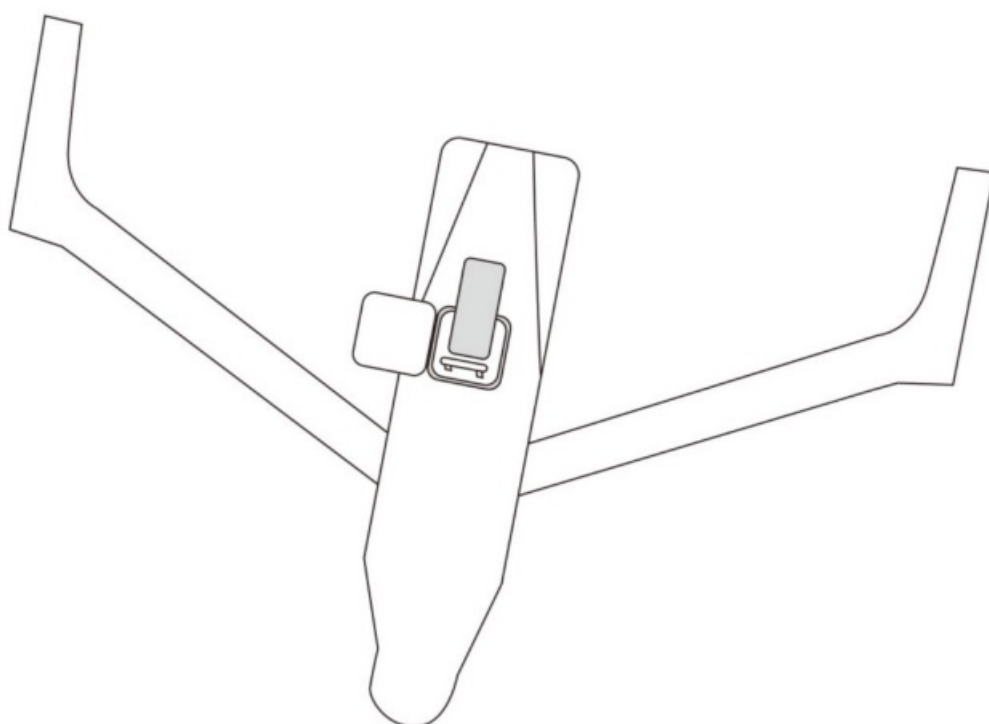


## Mount the Gimbal and Camera

- Press and hold the release button and rotate the gimbal lock counter-clockwise to remove the gimbal connector cover.
- Align the white and red dots and insert the gimbal.
- Rotate the gimbal lock to the locked position.

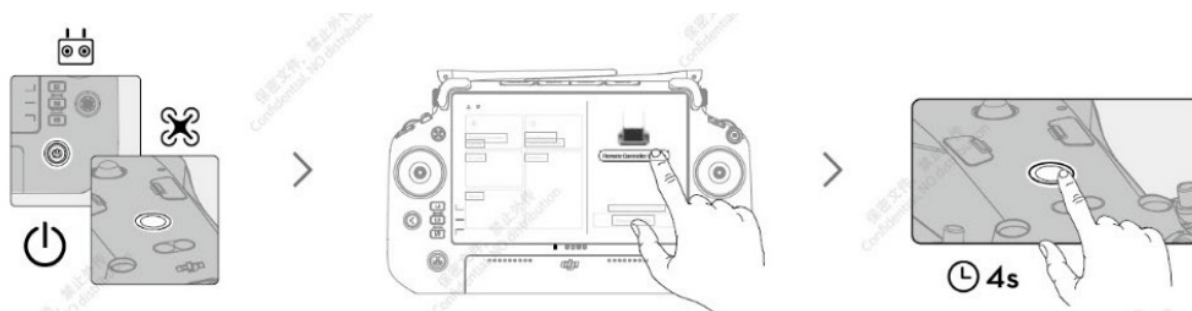


## Installing the SSD



## Getting Ready for Takeoff Linking

- Power on the remote controller and the aircraft.
- Open DJI Pilot and follow the on-screen instructions.



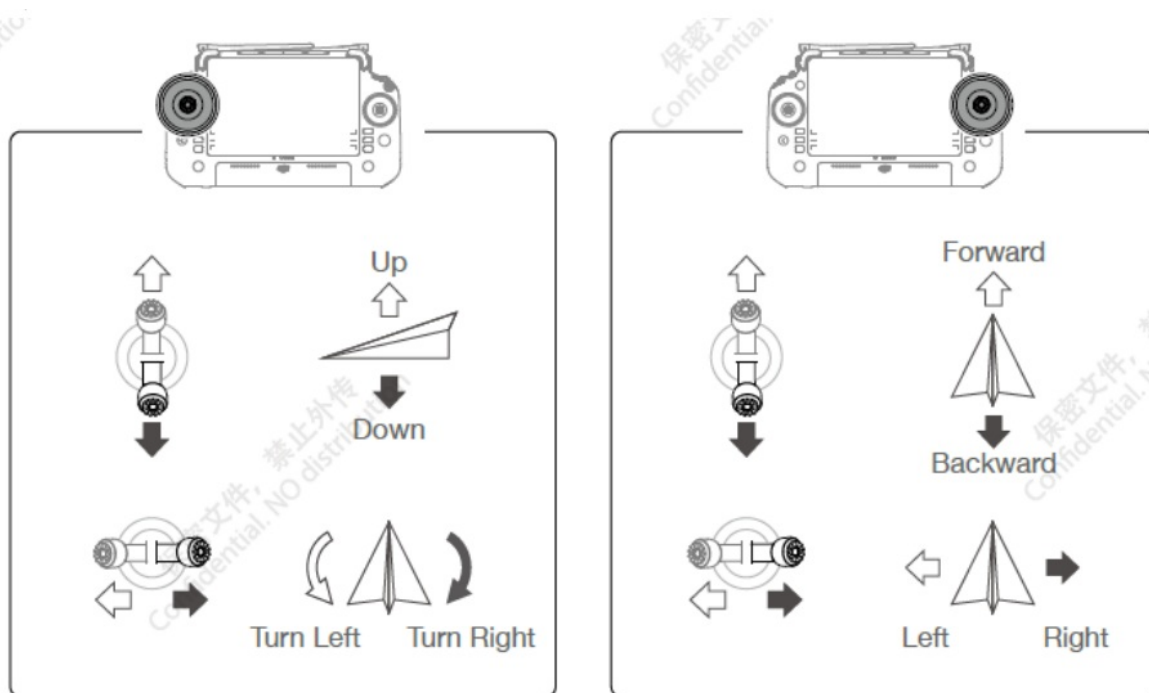
## Attaching the Propellers

Attach the propellers with marks to the motors with marks and the unmarked propellers to the motors without marks. Press each propeller down onto the motor and turn until it is secure.

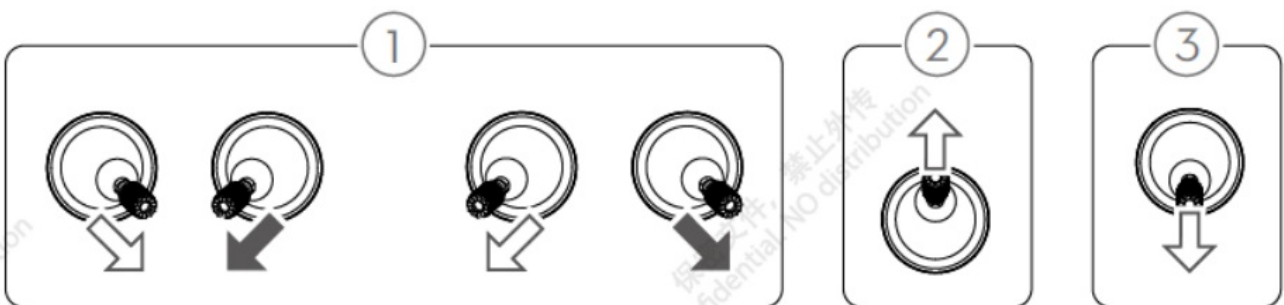
## Flight

### Control Stick Mode

The default control stick mode is Mode 2. The left control stick controls the altitude and heading of the aircraft while the right control stick controls the forward, backward, and sideward movements.



### Manual Takeoff/Landing



1. Start/stop motors: perform combination stick command.
2. Takeoff: slowly push the left control stick (Mode 2) up to take off.
3. Landing: slowly push the left control stick (Mode 2) down until the aircraft lands. Hold for three seconds to stop the motors.

## Specifications

<b>Aircraft (Model: T740)</b>	
Operating Temperature	-20°C to 40°C
<b>O3 Pro</b>	
Operating Frequency	2.400-2.4835 GHz, 5.150-5.250GHz 5.725-5.850 GHz
<b>Battery (Model: BWX630-4280-23.1)</b>	
Capacity	4280 mAh
Standard Voltage	23.1 V
Charging Temperature	5°C to 40°C
Max Power Rate	203 W

### Battery Safety Notice

- DO NOT allow liquid to come into contact with the batteries. DO NOT leave batteries covered in moisture or out in the rain. DO NOT drop the batteries into water. Otherwise, an explosion or fire may occur.
- DO NOT use non-DJI batteries. It is recommended to use DJI chargers.
- DO NOT use swollen, leaking, or damaged batteries. In such situations, contact DJI or a DJI authorized dealer.
- The batteries should be used at a temperature between -10° and 40° C (14° and 104° F). A high temperature can cause an explosion or fire. A low temperature will reduce the performance of a battery.
- DO NOT disassemble or pierce the battery in any way.
- The electrolytes in the battery are highly corrosive. If any electrolytes come into contact with your skin or eyes, immediately wash the affected area with water and seek medical support.
- Keep batteries out of the reach of children and animals.
- DO NOT use a battery if it is involved in a crash or heavy impact.
- Extinguish any battery fire using water, sand, or a dry powder fire extinguisher.
- DO NOT charge the battery immediately after flight. The battery temperature may be too high and may cause serious damage to the battery. Allow the battery to cool down to close to room temperature before charging. Charge the battery at a temperature range of 5° to 40° C (41° to 104° F). The ideal charging temperature range is 22° to 28° C (72° to 82° F). Charging at the ideal temperature range can prolong battery life.
- DO NOT leave the battery near heat sources such as a furnace or heater. DO NOT leave the battery inside a vehicle on hot days.
- DO NOT store the battery for an extended period after fully discharging. Otherwise, the battery may over-discharge and cause irreparable damage to the battery cell.
- If a battery with a low power level has been stored for an extended period, the battery will enter deep hibernation mode. Recharge the battery to bring it out of hibernation.

### FCC Compliance Notice

Supplier's Declaration of Conformity  
Product name: INSPIRE 3  
Model Number: T740

Responsible Party: DJI Technology, Inc.  
Responsible Party Address: 201 S. Victory Blvd., Burbank, CA 91502  
Website: [www.dji.com](http://www.dji.com)

We, DJI Technology, Inc., being the responsible party, declares that the above mentioned model was tested to demonstrate complying with all applicable FCC rules and regulations.

This device complies with Part 15 of the FCC Rules. Operation is subject to the following two conditions: (1) This device may not cause harmful interference, and (2) This device must accept any interference received, including interference that may cause undesired operation.

Any changes or modifications not expressly approved by the party responsible for compliance could void the user's authority to operate the equipment.

This equipment has been tested and found to comply with the limits for a Class B digital device, pursuant to part 15 of the FCC Rules. These limits are designed to provide reasonable protection against harmful interference in a residential installation. This equipment generates, uses and can radiate radio frequency energy and, if not installed and used in accordance with the instructions, may cause harmful interference to radio communications. However, there is no guarantee that interference will not occur in a particular installation. If this equipment does cause harmful interference to radio or television reception, which can be determined by turning the equipment off and on, the user is encouraged to try to correct the interference by one or more of the following measures:

- Reorient or relocate the receiving antenna.
- Increase the separation between the equipment and receiver.
- Connect the equipment into an outlet on a circuit different from that to which the receiver is connected.
- Consult the dealer or an experienced radio/TV technician for help.

The aircraft complies with FCC radiation exposure limits set forth for an uncontrolled environment. In order to avoid the possibility of exceeding the FCC radio frequency exposure limits, human proximity to the antenna shall not be less than 20cm during normal operation. This transmitter must not be co-located or operating in conjunction with any other antenna or transmitter.

## ISED Compliance Notice

This device contains licence-exempt transmitter(s)/receiver(s) that comply with Innovation, Science and Economic Development Canada's licence-exempt RSS(s). Operation is subject to the following two conditions: (1) This device may not cause interference. (2) This device must accept any interference, including interference that may cause undesired operation of the device.

This equipment complies with RSS-102 radiation exposure limits set forth for an uncontrolled environment. This equipment should be installed and operated with minimum distance 20cm between the radiator and your body. This transmitter must not be co-located or operating in conjunction with any other antenna or transmitter.

## Documents / Resources

	<p><a href="#">dji T740 RC Plus Remote Controller</a> [pdf] User Guide T7402206, SS3-T7402206, SS3T7402206, T740, T740 RC Plus Remote Controller, RC Plus Remote Controller, Remote Controller, Controller</p>
---	--

