



## dji SPARK Fly More Combo Drone User Guide

[Home](#) » [DJI](#) » dji SPARK Fly More Combo Drone User Guide 

### dji SPARK Fly More Combo Drone User Guide



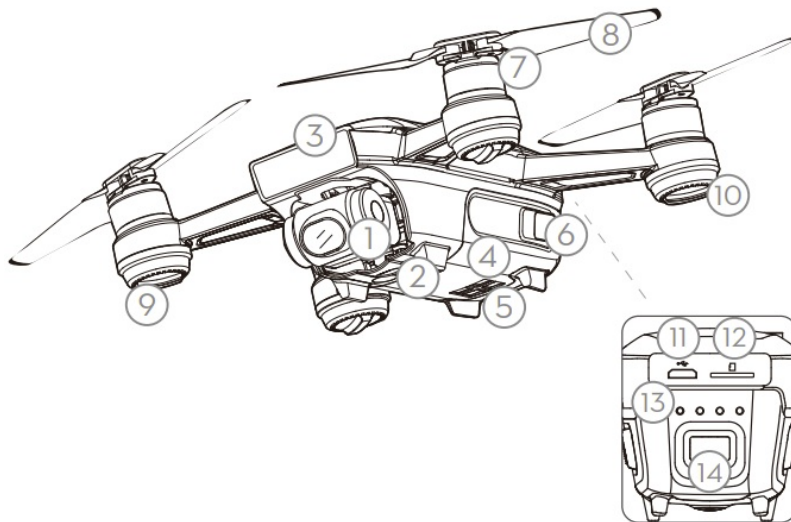
#### Contents

- [1 SPARK](#)
- [2 Download the DJI GO 4 App](#)
- [3 Activation](#)
- [4 Specifications](#)
- [5 Documents / Resources](#)
  - [5.1 References](#)
- [6 Related Posts](#)

## SPARK

The DJI™ SPARK™ is DJI's smallest flying camera featuring a stabilized camera, Intelligent Flight Modes, and

Obstacle Avoidance inside a light, portable body. Equipped with a Vision System and 3D Sensing System\*. Spark can film 1080P videos, capture 12-megapixel photos, and is capable of Buckshot and Gesture Control. With a maximum flight speed of 31 mph (50 kph), and a maximum flight time of 16 minutes\*\*, Spark is quick and fun, making drone photography exciting, simple and professional.



1. Gimbal and Camera
2. Vision System
3. 3D Sensing System
4. Intelligent Flight Battery
5. External Charging Contact
6. Battery Buckles
7. Motors
8. Propellers
9. Front LEDs
10. Aircraft Status Indicators
11. Micro USB Port
12. Micro SD Card Slot
13. Battery Level Indicators
14. Power Button

\* The Vision System and 3D Sensing System are affected by surrounding conditions. For more information, please read the Disclaimer and Safety Guidelines or watch the tutorial in the DJI GOTM 4 app or on the Official DJI website: <http://www.dji.com/spark>

\*\* Maximum flight time was tested in windless conditions flying at a consistent 12.4 mph (20 kph). This value should be taken for reference only.

## Download the DJI GO 4 App

Search for 'DJI GO 4' on the App Store or Google Play, or scan the QR code to download the app on your mobile device.



DJI GO 4 is supported in iOS 9.0 (or later) or Android 4.4 (or later).

### Prepare the Battery

Charge the battery for the first time to activate it

Power Outlet 100~240 V



USB Charger

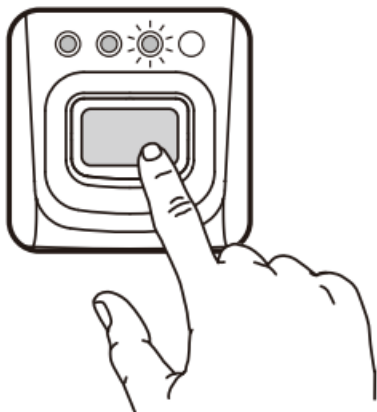


Micro USB Port

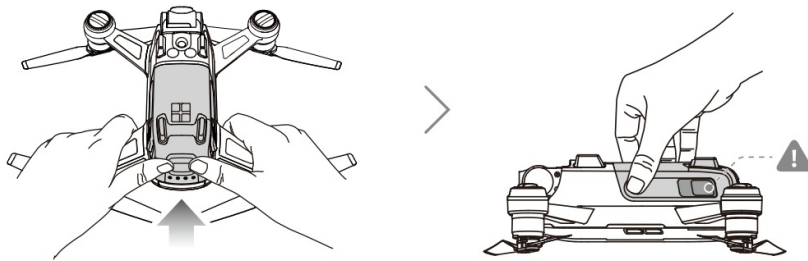


The battery is fully charged when the battery level indicators turn off. Charge time: ~ 1 hr 20 min


Low  High



Press once to check the battery level. Press once, then again and hold to turn on/off.



Hold the rear arms of the aircraft and push the Intelligent Flight Battery in place all the way to the end. Push and pull the battery to check that it is securely clamped.

 DO NOT touch the battery buckles

## Activation

Launch DJI GO 4, tap the icon in the upper right corner, scan the QR Code on the storage box, and follow the prompt for activation.



Use your DJI account to activate the aircraft. Activation requires an internet connection.

## Connection

Power on the aircraft



Connect to Wi-Fi with your mobile device



✓ Spark-XXX

DJI GO 4 App  
Launch DJI GO 4

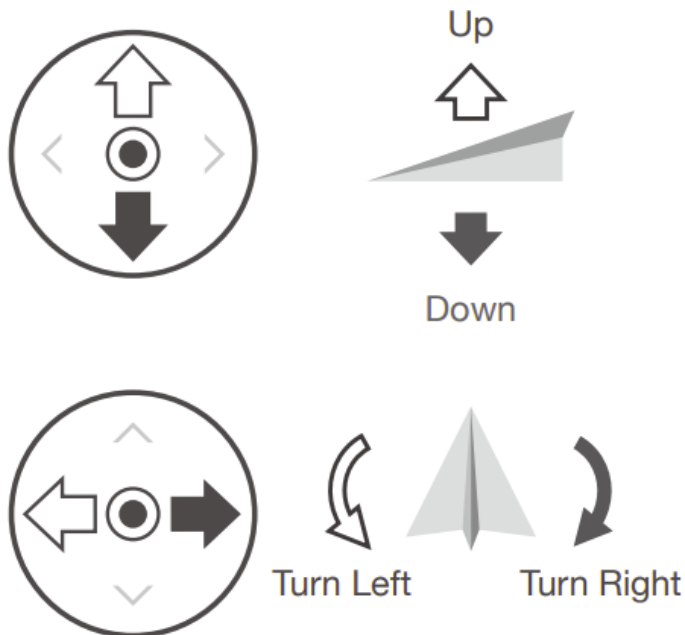


You can find your Wi-Fi network name (SSID) and password on the storage box. Please refer to the User Manual to change or reset your Wi-Fi password.

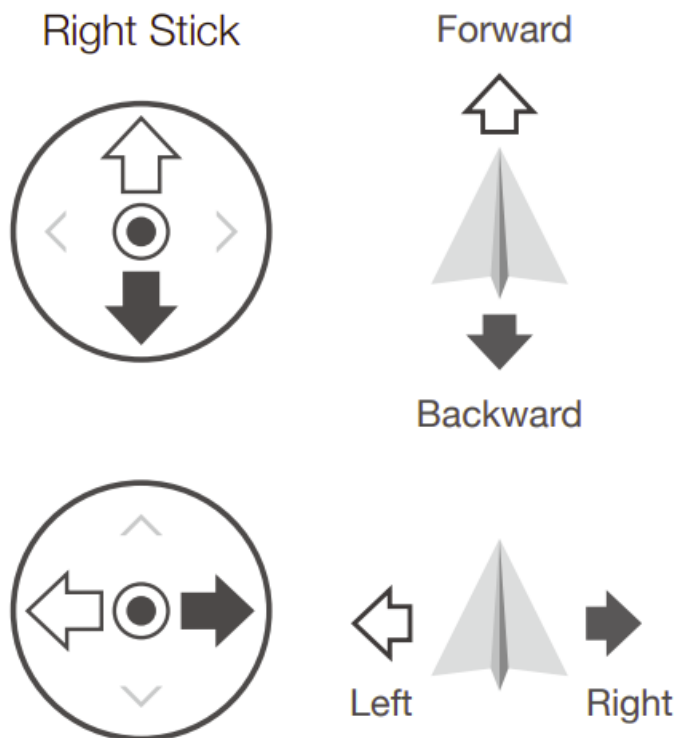
## Controls

Flying the aircraft with touch control or the Remote Controller.

### Left Stick



### Right Stick



## Specifications

### Aircraft

**Weight** 300 g

**Dimensions** 143×143×55 mm

**Max Speed** 31 mph (50 kph) in Sport Mode without wind

**Operating Temperature** 32° to 104° F (0° to 40° C)

### Gimbal

**Controllable Range** Pitch: -85° to 0°

**Stabilization** 2-axis (pitch, roll)

### 3D Sensing System

**Sensing Range** 0.6 – 16 ft (0.2 – 5 m)

**Operating Environment** Surface with diffuse reflection material, size > 20×20 mm and reflectivity > 20% (such as wall, trees, humans, etc.)

### **Vision System**

**Velocity Range** ≤ 22.4 mph (36 kph) at 6.6 ft (2 m) above ground

**Altitude Range** 0 – 26 feet (0 – 8 m)

**Operating Range** 0 – 98 feet (0 – 30 m)

**Operating Environment** Surfaces with a clear patterns and diffuse reflection material, reflectivity > 20%, adequate lighting (lux > 15)

### **Camera**

**Sensor** 1/2.3" CMOS Effective pixels: 12 Megapixels

**Video Recording Modes** FHD: 1920×1080 30p

**Lens** 25 mm (35 mm format equivalent), f/2.6

### **Remote Control Device**

**Operating Frequency** 2.4 GHz / 5.8 GHz

**Max Transmission Distance** Wi-Fi: 100 m (Distance), 50 m (Height)

**(Unobstructed, free of interference)** Remote Controller:

2.4 GHz: 2000 m (FCC), 500 m (CE), 500 m (SRRC)

5.8 GHz: 2000 m (FCC), 300 m (CE), 1200 m (SRRC)

### **Charger**

**Input** 100-240 V, 50/60 Hz, 0.5 A

**Output** 5 V 3 A / 9 V 2 A / 12 V 1.5 A

### **Intelligent Flight Battery**

**Capacity** 1480 mAh

**Battery Type** LiPo 3S

**Charging Temperature** 41° to 104° F (5° to 40° C)

For more information, read the User Manual:

<http://www.dji.com/spark>

This content is subject to change without prior notice.



SPARK is a trademark of DJI.

Copyright © 2017 DJI All Rights Reserved.



# SPARK

---

**Documents / Resources**

<div><div>SPARK</div><div>Quick Start Guide</div><div>V1.4</div><div></div><div></div></div>	<div><div><a href="#">dji SPARK Fly More Combo Drone</a> [pdf] User Guide</div><div>SPARK Fly More Combo Drone, SPARK, Fly More Combo Drone, More Combo Drone, Combo Drone</div></div>
--	--

## References

-  [Support for Spark - DJI](#)
-  [Manual-Hub.com - Free PDF manuals!](#)
- [User Manual](#)

[Manuals+](#), [Privacy Policy](#)

This website is an independent publication and is neither affiliated with nor endorsed by any of the trademark owners. The "Bluetooth®" word mark and logos are registered trademarks owned by Bluetooth SIG, Inc. The "Wi-Fi®" word mark and logos are registered trademarks owned by the Wi-Fi Alliance. Any use of these marks on this website does not imply any affiliation with or endorsement.