



dji RC Plus Controller User Guide

[Home](#) » [DJI](#) » dji RC Plus Controller User Guide

dji RC Plus Controller User Guide



Contents [[hide](#)

1

INDUCTION

2

Overview (Fig. A)

3

Introduction

4

Specifications

5

Documents / Resources

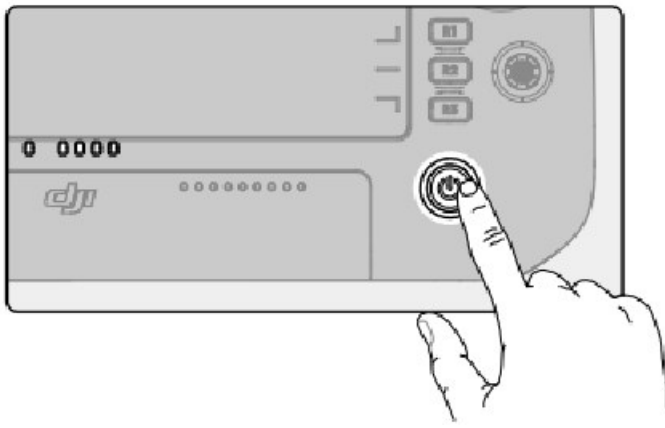
5.1

References

6

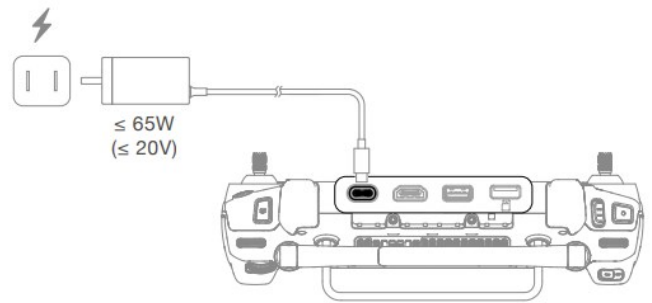
Related Posts

INDUCTION

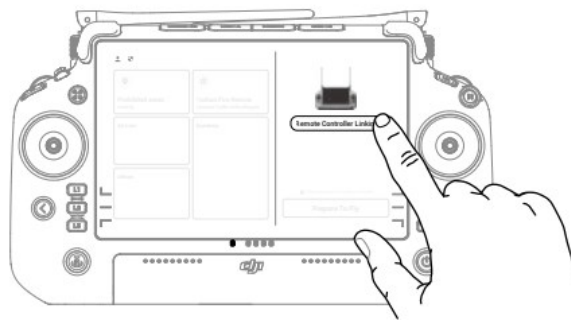
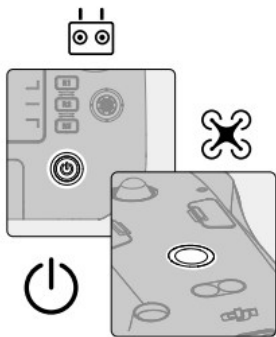


1

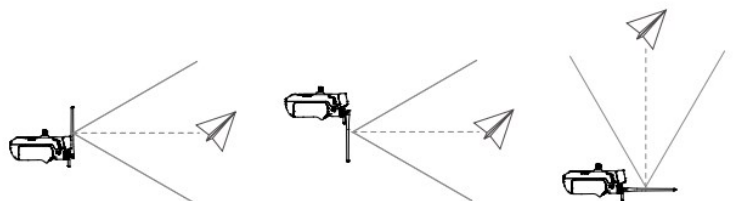
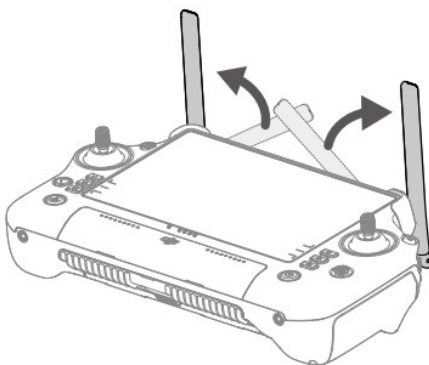
2

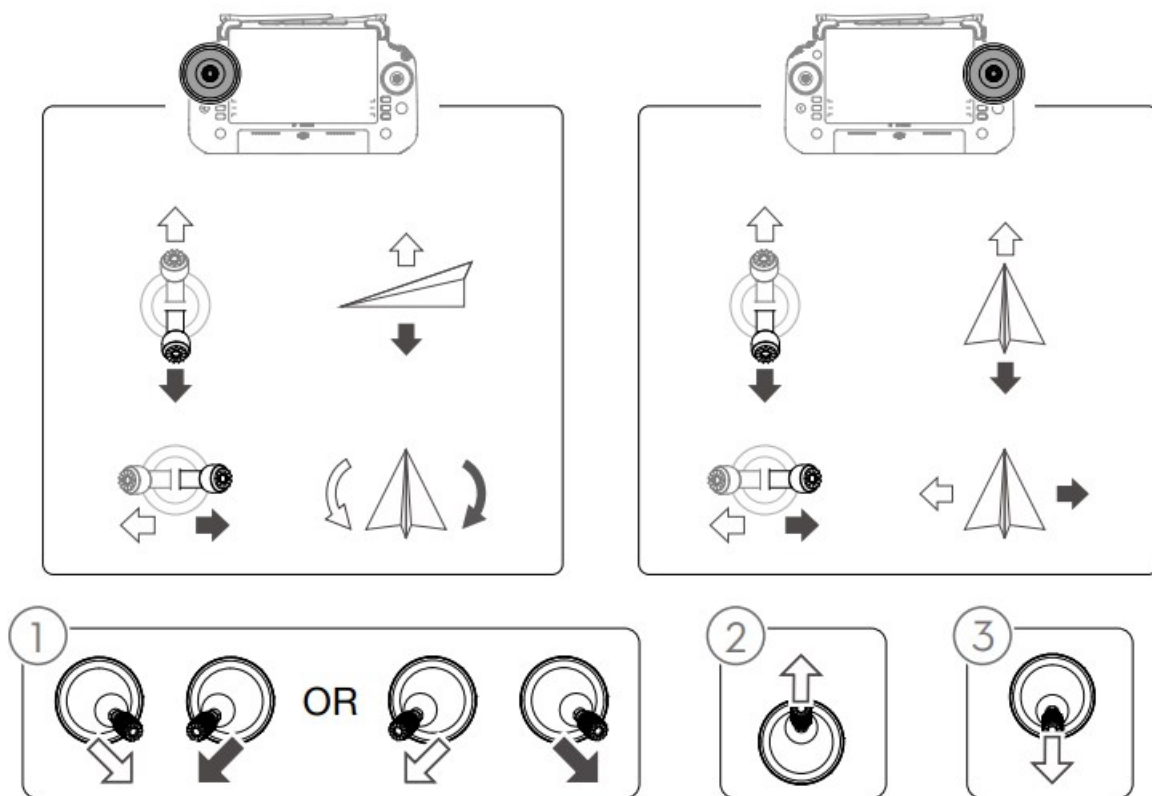


4



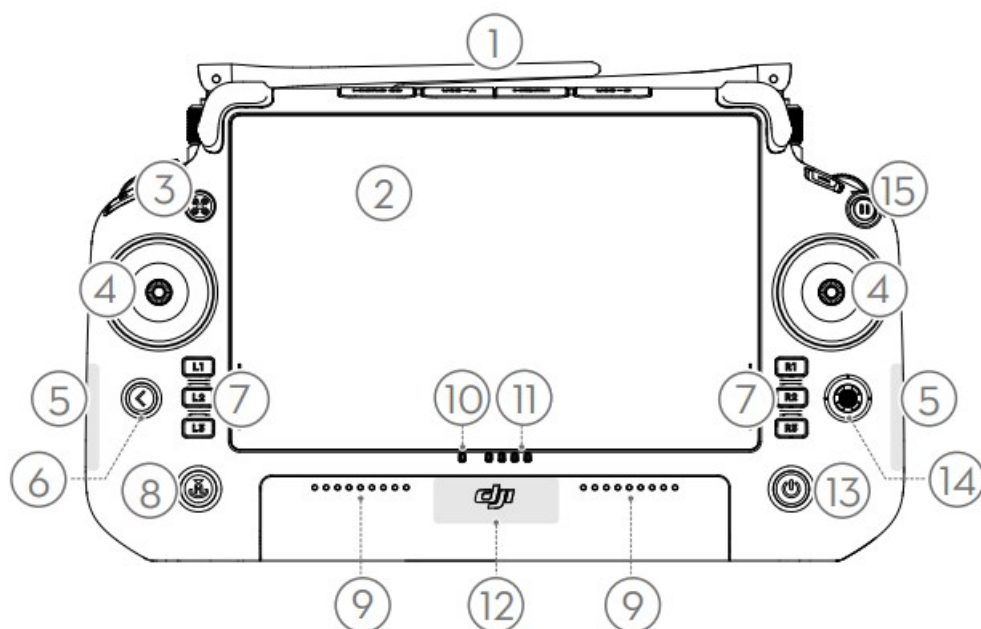
5

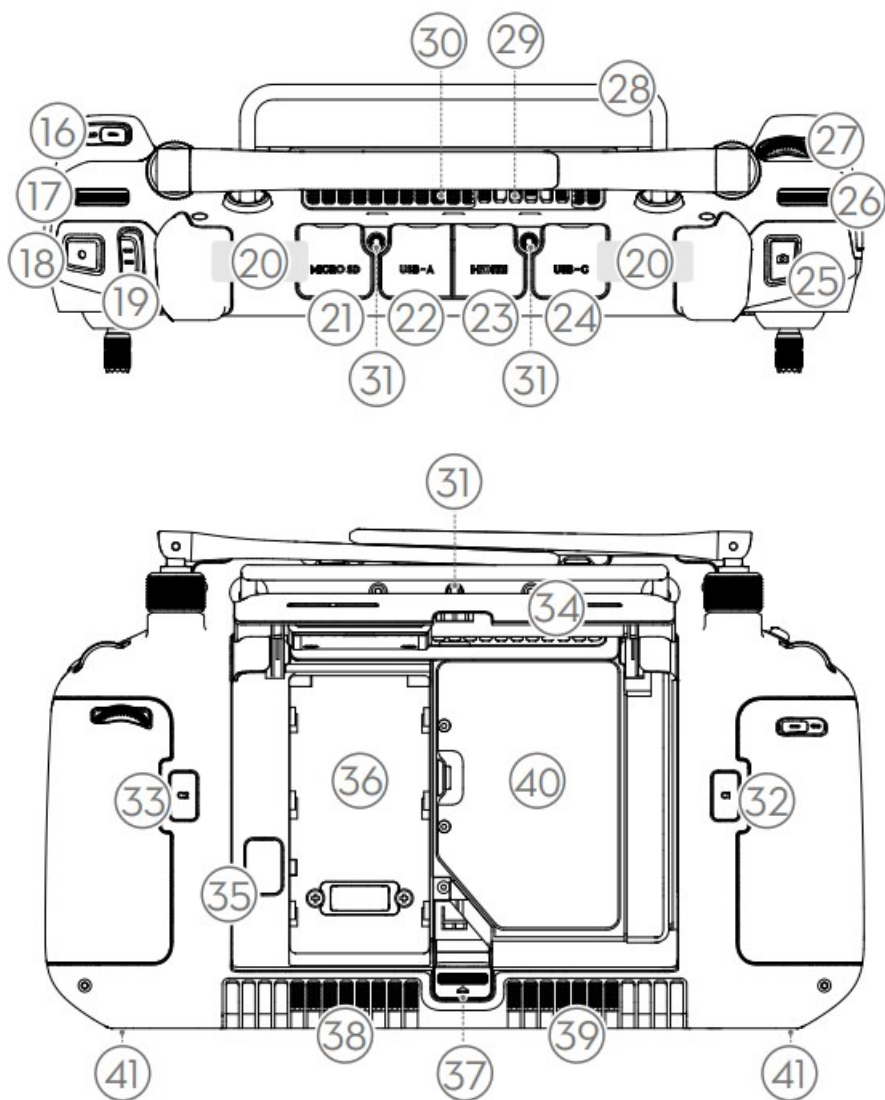




Overview (Fig. A)

A





1. External RC Antennas
2. Touchscreen
3. Indicator Button [1]
4. Control Sticks
5. Internal Wi-Fi Antennas
6. Back/Function Button
7. L1/L2/L3/R1/R2/R3 Buttons
8. Return to Home (RTH) Button
9. Microphone
10. Status LED
11. Battery Level LEDs
12. Internal GNSS Antennas
13. Power Button
14. 5D Button
15. Flight Pause Button
16. C3 Button (customizable)
17. Left Dial
18. Record Button [1]

19. Flight Mode Switch
20. Internal RC Antennas
21. microSD Card Slot
22. USB-A Port
23. HDMI Port
24. USB-C Port
25. Focus/Shutter Button [1]
26. Right Dial
27. Scroll Wheel
28. Handle
29. Speaker
30. Air Vent
31. Reserved Mounting Holes
32. C1 Button (customizable)
33. C2 Button (customizable)
34. Rear Cover
35. Battery Release Button
36. Battery Compartment
37. Rear Cover Release Button
38. Alarm
39. Air Intake
40. Dongle Compartment
41. 1/4" Threaded Holes

[1] DJITM RC Plus is capable of supporting various DJI aircraft and the button functions vary depending on the aircraft. Read the user manual of the aircraft for more information on button functions.



Contact DJI Support or a DJI authorized dealer to replace the components of the remote controller if damaged. DO NOT disassemble the remote controller without the assistance of DJI Support or a DJI authorized dealer.

Introduction

The DJI RC Plus remote controller features O3 Pro, the latest version of DJI's signature OCUSYNCTM image transmission technology, and can transmit a live HD view from the camera of an aircraft to display on the touchscreen. The remote controller comes with a wide range of aircraft and gimbal controls as well as customizable buttons, which can easily control the aircraft and operate the camera. The remote controller has a protection rating of IP54 (IEC 60529). [2]

The built-in 7.02-in high brightness 1200 cd/m² screen boasts a resolution of 1920×1200 pixels. The Android operating system comes with a variety of functions such as GNSS, Wi-Fi and

Bluetooth. The remote controller has a maximum operating time [3] of 3 hours and 18 min with the internal battery and up to 6 hours when used with an external WB37 Intelligent Battery [4].

[2] This protection rating is not permanent and may reduce over time after long-term use.

[3] The maximum operating time was tested in a lab environment and is for reference only.

[4] The WB37 Intelligent Battery is not included. Refer to the WB37 Intelligent Battery Safety Guidelines for more information.

Guide Steps Description

1. Watching the Tutorial Videos

- Scan the QR code to watch tutorial videos and other videos before using for the first time.

2. Charging

- The internal battery is placed in hibernation mode before delivery. It must be charged before using for the first time. The battery level LEDs start to flash to indicate that the internal battery is activated.
- It is recommended to use a locally certified USB-C charger at a maximum rated power of 65W and maximum voltage of 20V such as the DJI 65W Portable Charger.
- Charge the remote controller immediately if the power level reaches 0%. Otherwise, the remote controller may be damaged due to being over discharged for an extended period. Discharge the remote controller to between 40% and 60% if stored for an extended period.
- Fully discharge and charge the remote controller every three months. The battery depletes when stored for an extended period.

3. Checking the Battery and Powering On/Off

- Make sure to power off the aircraft before the remote controller.

4. Activating and Linking the Remote Controller

- The remote controller needs to be activated before using for the first time. An internet connection is required for activation. Follow the prompts to activate. Contact DJI Support if activation fails several times.
- Make sure the remote controller is linked to the aircraft. Link the remote controller and the aircraft when required such as using another aircraft.

5. Preparing the Remote Controller

- Lift and adjust the antennas to make sure that the aircraft is in the optimal transmission range.
- DO NOT push the antennas beyond their limit. Otherwise, they may be damaged. Contact DJI Support to repair or replace the antennas if they are damaged. Damaged antennas greatly decrease performance.

6. Flight

- Fully charge the remote controller before each flight.
- There will be an alert if the remote controller is not used for five minutes while it is powered on but the touchscreen is off and it is not connected to the aircraft. It will automatically power off after a further 30 seconds. Move the control sticks or perform any other remote controller action to cancel the alert.
- For optimal communication and positioning performance, DO NOT block or cover the remote controller internal RC antennas and internal GNSS antenna.
- DO NOT cover the air vent or the air intake on the remote controller. Otherwise, the performance of the remote controller may be affected due to overheating.
- The motors can only be stopped mid-flight when the flight controller detects a critical error. Fly the aircraft with caution to ensure the safety of yourself and those around you.
- Refer to the user manual of the aircraft for more information about aircraft controls and operations.



Stay alert when using the DJI RC Plus to control an Unmanned Aerial Vehicle (UAV). Carelessness may result in serious harm to yourself and others. Download and read the user manuals for the aircraft and remote controller before using for the first time.

Specifications

O3 Pro

Operating Frequency: [1] 2.4000-2.4835 GHz; 5.725-5.850

GHz Max Transmission Distance [2] (unobstructed, free of interference): 15 km (FCC); 8 km (CE/SRRC/MIC)
Max Transmission Distance [2](with interference)

Strong Interference (urban landscape, limited line of sight, many competing signals): 1.5-3 km
(FCC/CE/SRRC/MIC)

Medium Interference (suburban landscape, open line of sight, some competing signals): 3-9 km (FCC); 3-6 km (CE/SRRC/MIC)

Weak Interference (open landscape abundant line of sight, few competing signals): 9-15 km (FCC); 6-8 km (CE/SRRC/MIC)

Transmitter Power (EIRP) 2.4 GHz: <33 dBm (FCC); <20 dBm (CE/SRRC/MIC)

5.8 GHz: <33 dBm (FCC); <14 dBm (CE); <23 dBm (SRRC)

Wi-Fi

Protocol: Wi-Fi 6

Operating Frequency [1]: 2.4000-2.4835 GHz; 5.150-5.250 GHz; 5.725-5.850 GHz

Transmitter Power (EIRP): 2.4 GHz: <26 dBm (FCC); <20 dBm (CE/SRRC/MIC) 5.1 GHz: <26 dBm (FCC); <23 dBm (CE/SRRC/MIC) 5.8 GHz: <26 dBm (FCC/SRRC); <14 dBm (CE)

Bluetooth

Protocol Bluetooth: 5.1

Operating Frequency: 2.4000-2.4835 GHz

Transmitter Power (EIRP): <10 dBm

General

Model: RM700

Screen: 7.02-in LCD touchscreen, with a resolution of 1920×1080 pixels, and high brightness of 1200 cd/m2
Internal Battery Li-ion (6500 mAh @ 7.2 V), Chemical System: LiNiCoAlO2 Charging Type It is recommended to use USB-C chargers with maximum rated power of 65W and maximum voltage of 20V

Rated Power: 12.5 W

Storage Capacity: 64GB + expandable storage via microSD card

Charging Time: 2 hours (using a USB-C chargers with maximum rated power of 65W and maximum voltage of 20V)

Operating Time: Internal Battery: Approx. 3 hours and 18 min; Internal Battery + External Battery: Approx. 6 hours
Ingress Protection Rating IP54

GNSS: GPS+Galileo+BeiDou

Video Output Port: HDMI Type-A

Operating Temperature: -20° to 50° C (-4° to 122° F) Storage Temperature Range

Less than one month: -30° to 45° C (-22° to 113° F);

One to three months: -30° to 35° C (-22° to 95° F);


Three months to one year: -30° to 30° C (-22° to 86° F)

Charging Temperature: 5° to 40° C (41° to 104° F)

Supported Aircraft Models: [3] M30, M30T

1. 5.8 and 5.1GHz frequencies are prohibited in some countries. In some countries, the 5.1GHz frequency is only allowed for use in indoor.
2. DJI RC Plus is capable of supporting various DJI aircraft and the parameters vary depending on the aircraft.
3. The DJI RC Plus will support more DJI aircraft in future. Visit the official website for the latest information.

Documents / Resources

	<p>dji RC Plus Controller [pdf] User Guide RM7002110, SS3-RM7002110, SS3RM7002110, RC Plus Controller, RC Plus, Controller</p>
---	--

References

-  [DJI - Official Website](#)
-  [DJI - Official Website](#)
-  [EU Declaration of Conformity - DJI](#)
-  [Anatel — Agência Nacional de Telecomunicações](#)
-  [DJI - Official Website](#)
-  [DJI - Official Website](#)
-  [EU Declaration of Conformity - DJI](#)
-  [s.dji.com/guide14](#)