



DJI Propeller Guard Instructions

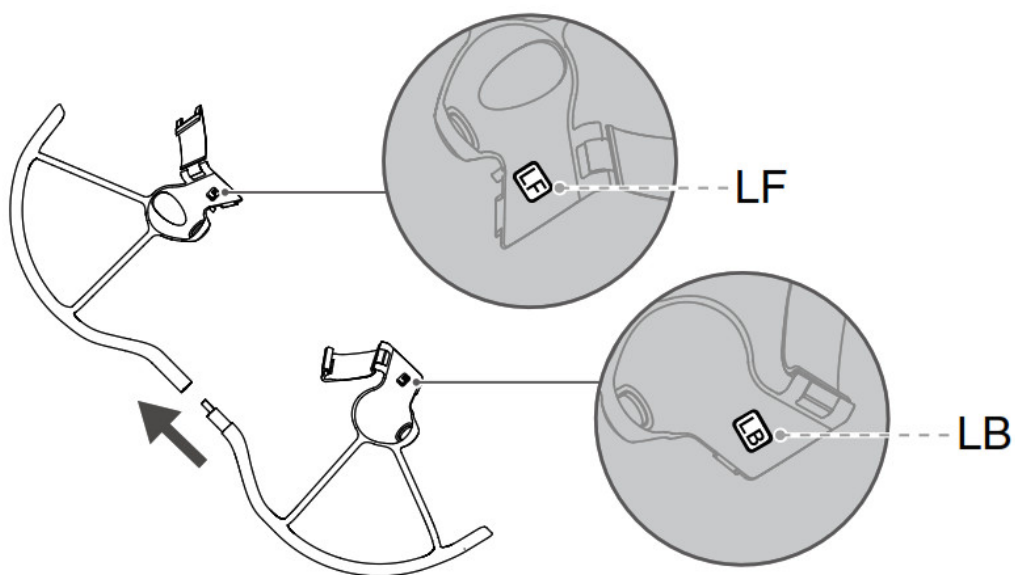
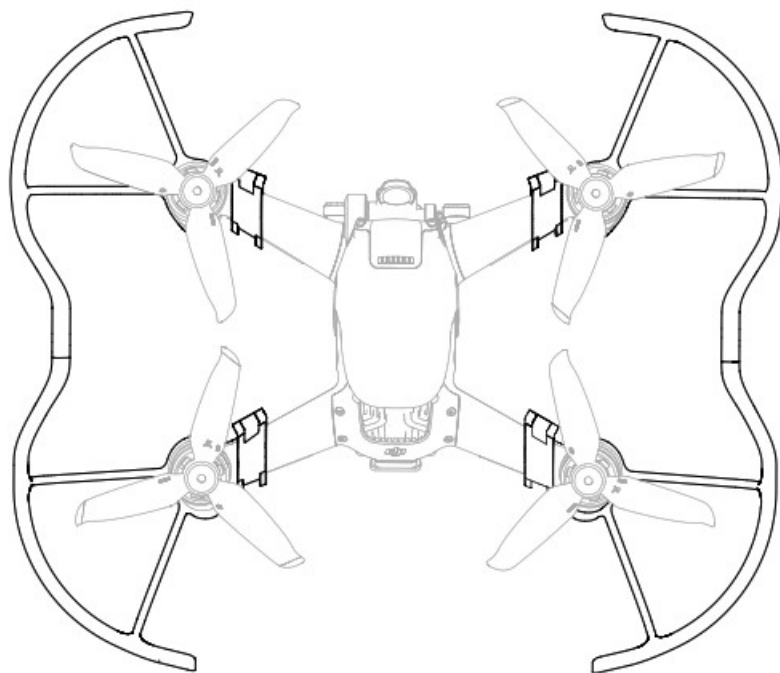
[Home](#) » [DJI](#) » DJI Propeller Guard Instructions 

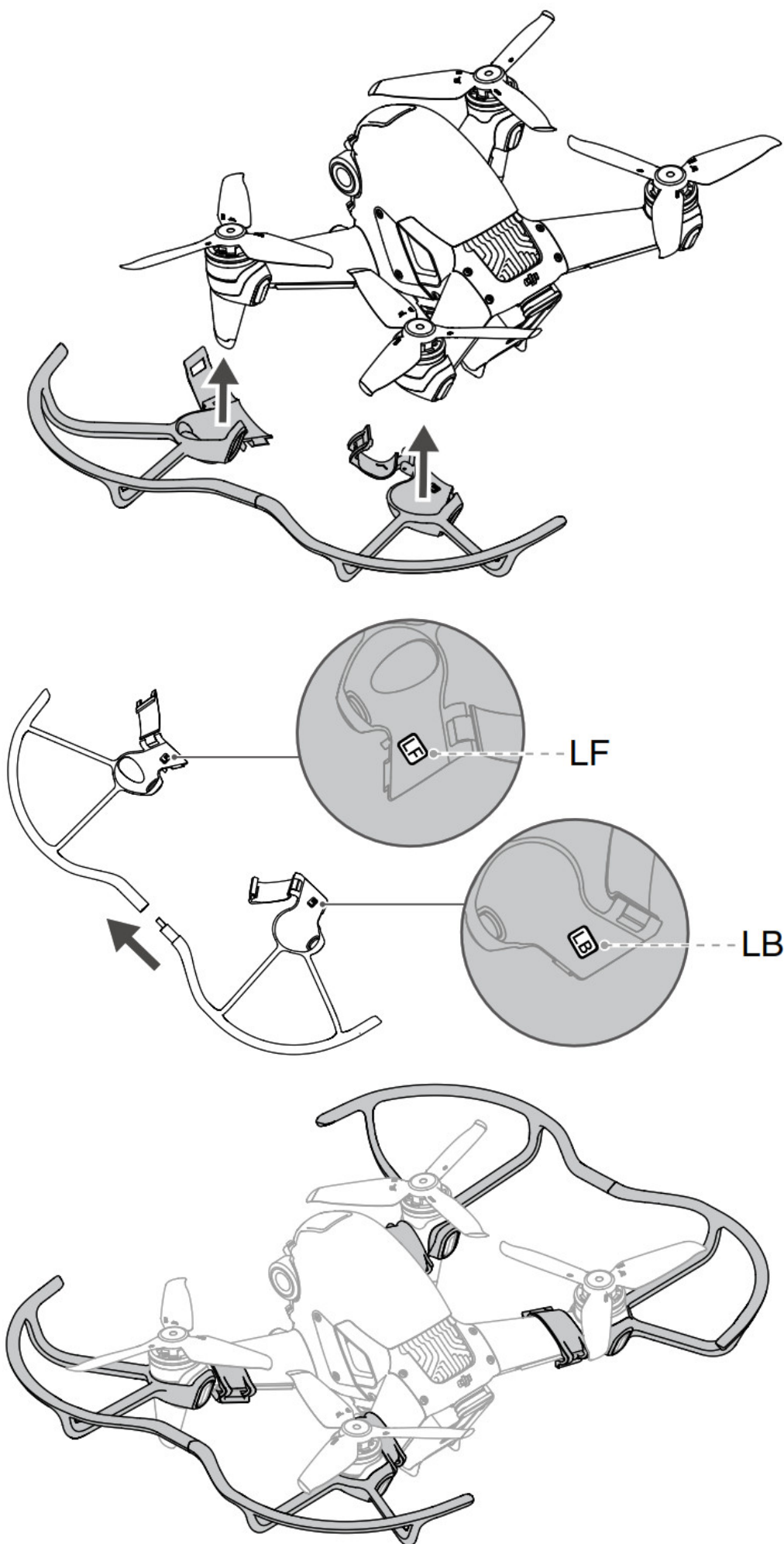


**Propeller Guard
User Guide
v1.0 2021.01**

Contents

- [1 Disclaimer and Warning](#)
- [2 Introduction](#)
- [3 Installation](#)
- [4 Specifications](#)
- [5 Documents / Resources](#)
- [6 Related Posts](#)





Disclaimer and Warning

Please read this entire document and all safe and lawful practices DJI™ provided carefully before use. Failure to read and follow instructions and warnings may result in serious injury to yourself or others, damage to your DJI product, or damage to other objects in the vicinity. By using this product, you hereby signify that you have read this disclaimer and warning carefully and that you understand and agree to abide by the terms and conditions herein. You agree that you are solely responsible for your own conduct while using this product, and for any consequences thereof. DJI accepts no liability for damage, injury, or any legal responsibility incurred directly or indirectly from the use of this product.

DJI is a trademark of SZ DJI TECHNOLOGY CO., LTD. (abbreviated as “DJI”) and its affiliated companies. Names of products, brands, etc., appearing in this document are trademarks or registered trademarks of their respective owner companies. This product and document are copyrighted by DJI with all rights reserved. No part of this product or document shall be reproduced in any form without the prior written consent or authorization of DJI.

This document and all other collateral documents are subject to change at the sole discretion of DJI. For up-to-date product information, visit <http://www.dji.com> and click on the product page for this product. This disclaimer is available in various languages. In the event of divergence among different versions, the English version shall prevail.

Introduction

The DJI FPV Propeller Guard is used to reduce harm to people and damage to objects if there is a collision with the spinning propellers of the aircraft. It is recommended to use the propeller guard in windless environments or during indoor or low-speed flights.

Installation

1. Release the locks on the propeller guards. Check the mark on the lock and connect the two propeller guards marked LF (Left Front) and LB (Left Back).
2. With the rear of the aircraft facing toward you, attach the propeller guards from underneath the extended frame arms on the left side. Make sure the propeller guards form a complete guard around the Click frame arms.
3. Close the locks. There will be a clicking sound indicating the lock is secure.
4. Repeat the steps above to install the propeller guards on the right side. The locks are marked RF (Right Front) and RB (Right Back).

The propulsion performance of the aircraft will be affected after the propeller guards are attached. Fly with caution.

Specifications

Weight (single) : 21.8 g

Radius :

Installation Circumference: 95 mm 387 × 332 × 136 mm



DJI is a trademark of DJI.

Copyright © 2021 DJI All Rights Reserved.

Printed in China.



37QDDJBG01TY

Documents / Resources



Manuals+,