

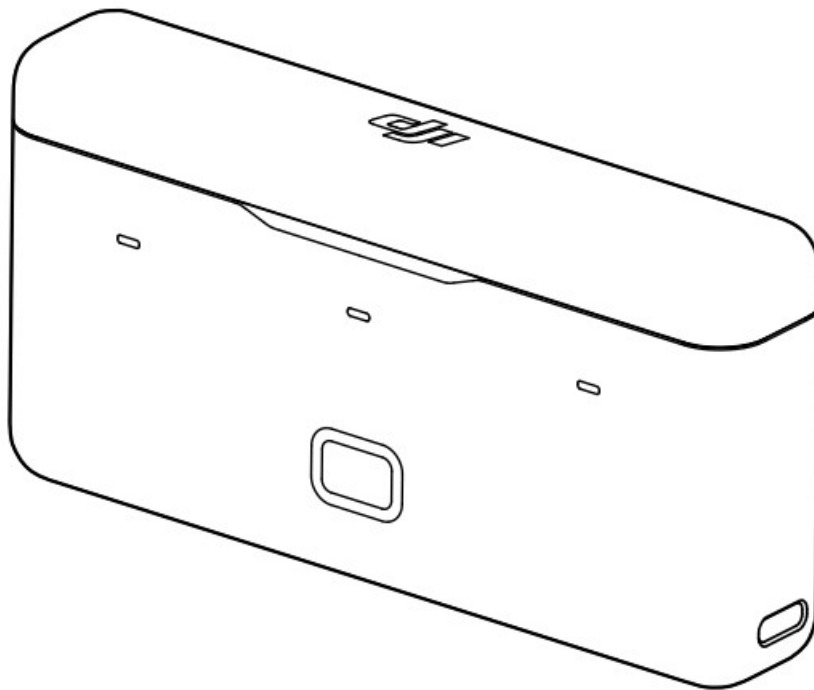


dji OSMO Action 3 Multi Functional Battery Case Instructions

[Home](#) » [DJI](#) » dji OSMO Action 3 Multi Functional Battery Case Instructions 

dji OSMO ACTION 3

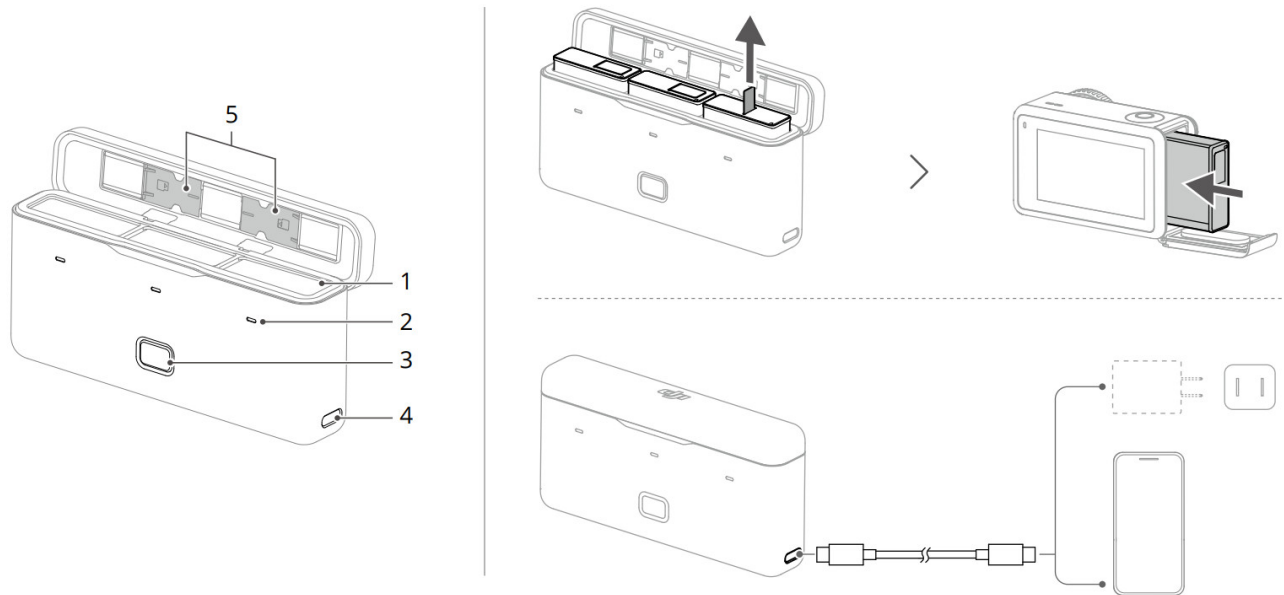
Action 3 Multi Functional Battery
Case Instructions



Contents

- [1 OSMO Action 3 Multi Functional Battery Case](#)
- [2 Disclaimer](#)
- [3 Introduction](#)
- [4 Specifications](#)
- [5 Documents / Resources](#)
- [6 Related Posts](#)

OSMO Action 3 Multi Functional Battery Case



1. Battery Ports
2. Status LEDs
3. Status Button
4. Power Port (USB-C)
5. microSD Card Holder

Disclaimer

By using this product, you signify that you have read, understand, and accept the terms and conditions of this guideline and all instructions at www.dji.com/action-3. EXCEPT AS EXPRESSLY PROVIDED IN AFTER-SALES SERVICE POLICIES AVAILABLE AT THE PRODUCT AND ALL MATERIALS AND CONTENT AVAILABLE THROUGH THE PRODUCT ARE PROVIDED "AS IS" AND ON "AS AVAILABLE BASIS" WITHOUT WARRANTY OR CONDITION OF ANY KIND.

Warnings

1. When using the OSMOTM Action 3 Multifunctional Battery Case (hereinafter referred to as "battery case") to charge the Oslo Action 3 Extreme Batteries, it is recommended to use the DJI 30 W USB-C Charger or a USB-C charger that supports Power Delivery or PPS (Programmable Power Supply).
2. Place the battery case on a flat and stable surface when in use. Ensure the device is properly insulated to prevent fire hazards.
3. DO NOT attempt to touch the metal terminals on the battery case.

4. Clean the metal terminals on the battery case with a clean, dry cloth if there is any noticeable buildup.
5. The battery case is not waterproof. DO NOT place in water or spill any liquids on the case.

Introduction

The Osmo Action 3 Multifunctional Battery Case is designed to store 3 Cosmo Action 3 Extreme Batteries safely. Users can check the battery levels by pressing the status button once or opening the battery case. The status LEDs will display the battery level.

When the case is connected to a charger with the batteries inserted, the case will charge the batteries. The batteries with the highest power level will be charged first and the remaining batteries will be charged in sequence. When an external device is connected to the case using the USB-C port, the case can be used as a power bank. The batteries with the lowest power level will be discharged first and the remaining batteries will be discharged in sequence.

Status LED Indicator Descriptions

Each battery port has its corresponding status LED.

Status LED Descriptions	Status
Solid Red	$0\% \leq \text{Battery Level} < 20\%$
Solid Yellow	$20\% \leq \text{Battery Level} < 80\%$
Solid Green	$80\% \leq \text{Battery Level} \leq 100\%$
Off	The battery in the corresponding battery port is fully charged.
Blink Green Successively	No battery is inserted.
Blinks Red	Abnormal battery is inserted into the corresponding battery port.

Visit <https://www.dji.com/action-3> (User Manual/Safety Guidelines) to learn more about how to use this product.

Specifications

Model	AC2CH
Compatible DJI Charger	DJI 30 W USB-C Charger
Compatible DJI Battery	BCX202-1770-3.85 Cosmo Action 3
Operating Temperature	5° to 40° C (41° to 104° F)
Input	5 V-10 V@3 A
USB-C Port Output	Max: 5 V @2 A
Weight	Approx. 108 g
Charging Time*	For three BCX202-1770-3.85 batteries: Approx. 2 hours

* Charging time was tested using a DJI 30 W USB-C Charger in a lab environment and should be used as reference only.

WE ARE HERE FOR YOU



Contact
DJI SUPPORT

<https://www.dji.com/support>



http://weixin.qq.com/q/02lxS4YR_2eF410000g03i



<https://www.dji.com/action-3/downloads>

※ This content is subject to change without prior notice. and DJ OSMO are trademarks of DJI.
Copyright © 2022 DJI OSMO All Rights Reserved.

dji OSMO ACTION 3



YCBZSS00213002

Documents / Resources



[dji OSMO Action 3 Multi Functional Battery Case](#) [pdf] Instructions

OSMO Action 3 Multi Functional Battery Case, OSMO Action, 3 Multi Functional Battery Case, 3 Multi Functional Case, Battery Case, Case