



**OM
Multifunctional
Module**



dji OM Multifunctional Module User Manual

[Home](#) » [DJI](#) » dji OM Multifunctional Module User Manual 

Contents

- [1 dji OM Multifunctional Module](#)
- [2 Product Profile](#)
- [3 Using the Product](#)
- [4 Tracking](#)
- [5 Shooting](#)
- [6 Indicators](#)
- [7 Specifications](#)
- [8 Contact](#)
- [9 FAQ](#)
- [10 Documents / Resources](#)
 - [10.1 References](#)
- [11 Related Posts](#)



dji OM Multifunctional Module



Info

This document is copyrighted by DJI with all rights reserved. Unless otherwise authorized by DJI, you are not eligible to use or allow others to use the document or any part of the document by reproducing, transferring or selling the document. Only refer to this document and the content thereof as instructions to operate DJI products. The document should not be used for other purposes. In the event of divergence among different versions, the English version shall prevail.

Searching for Keywords

Search for keywords such as “battery” and “install” to find a topic. If you are using Adobe Acrobat Reader to read this document, press Ctrl+F on Windows or Command+F on Mac to begin a search.

Navigating to a Topic

View a complete list of topics in the table of contents. Click on a topic to navigate to that section.

Printing this Document

This document supports high resolution printing.

Using this Manual

Legend

- Important
- Hints and Tips
- Reference

Read Before Use

DJI™ provides you with tutorial videos and the following documents:

1. Safety Guidelines
2. Quick Start Guide
3. User Manual

It is recommended to watch all the tutorial videos and read the Safety Guidelines before using for the first time. Make sure to review the Quick Start Guide before using for the first time and refer to this User Manual for more information.

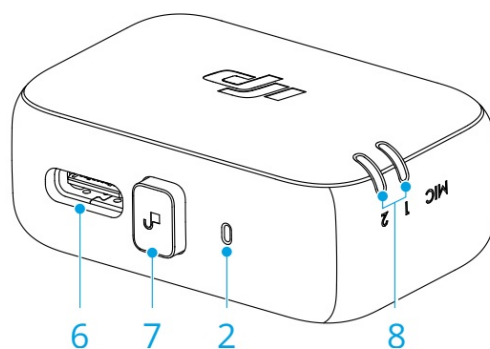
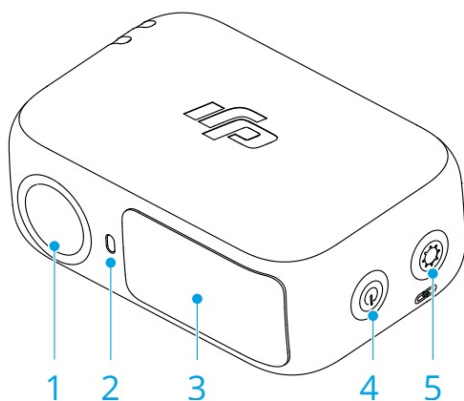
Video Tutorials

Go to the address below or scan the QR code to watch the tutorial videos, which demonstrate how to use the product safely:



- <https://www.dji.com/osmo-mobile-7-series/video>

Product Profile



1. Tracking Camera
2. Camera Status Indicator
3. Fill Light
4. Brightness Control Button
5. Color Temperature Control/Bluetooth Pairing Button
6. Audio Data/Phone Charging Port (USB-C)
7. Release Button
8. Wireless Microphone Status Indicator

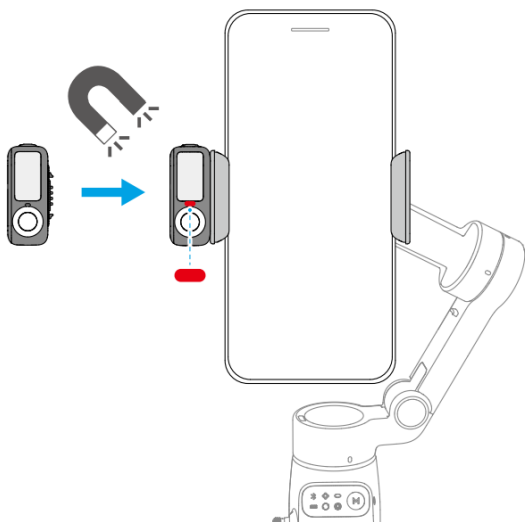
Using the Product

- DJI OM Multifunctional Module is hereinafter referred to as “Multifunctional Module”.

Installing and Removing

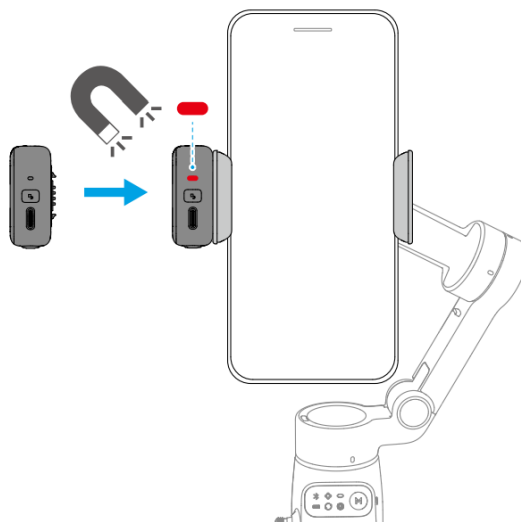
Example ①

Capture photos or videos of yourself

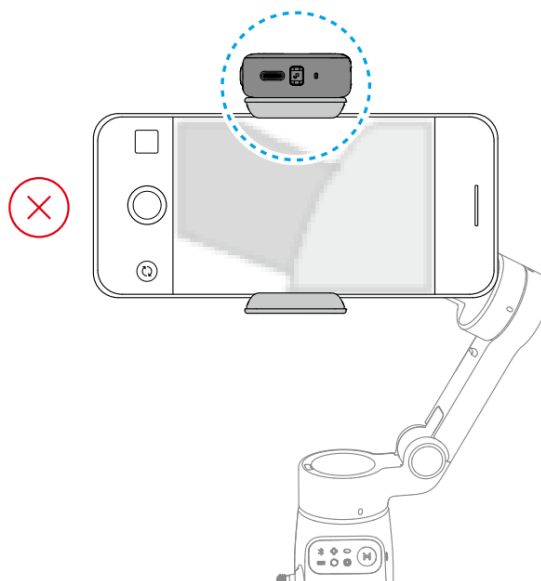
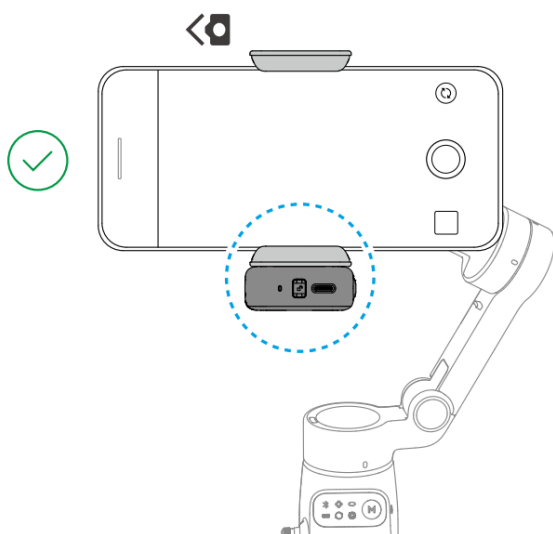


Example ②

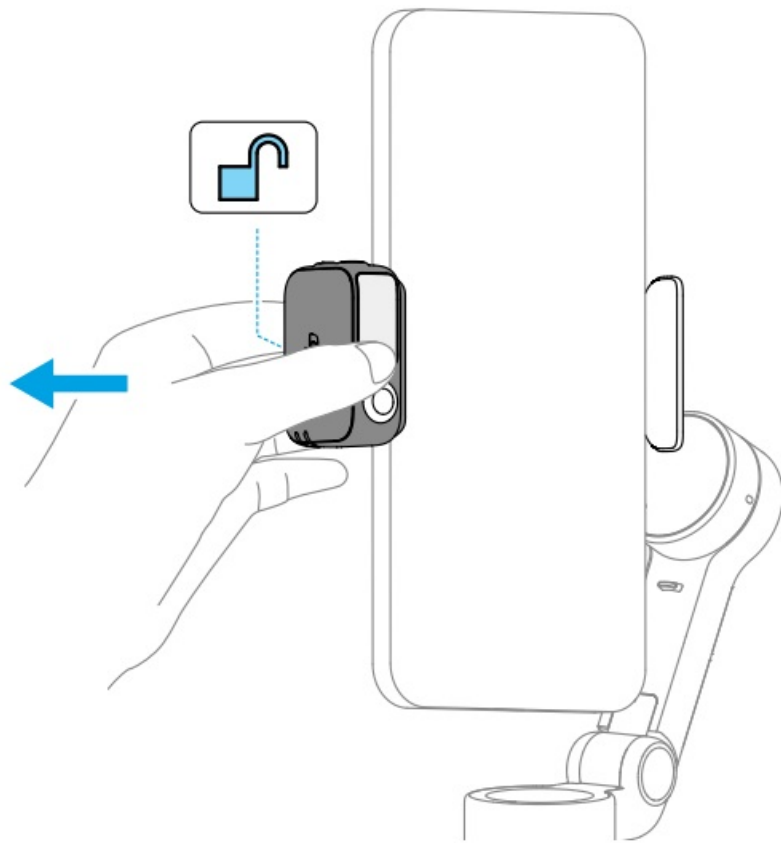
Capture photos or videos of others



- If the indicator shown in the preceding figure does not turn on after Multifunctional Module is installed, check whether the marks on the gimbal and the phone clamp are aligned.
- If Multifunctional Module is idle for more than five minutes, it automatically enters sleep mode and the indicator turns off. To exit sleep mode, press the trigger on the gimbal.
- Avoid blocking the rear camera when shooting in landscape mode



Remove Multifunctional Module:



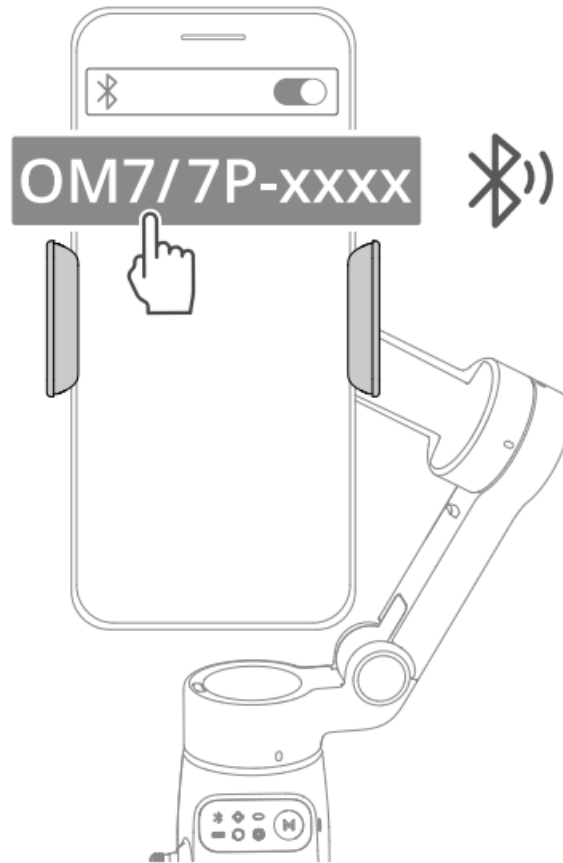
Tracking and Shooting


Multifunctional Module allows you to enable tracking in the system camera and thirdparty camera apps, without the need to use DJI Mimo.

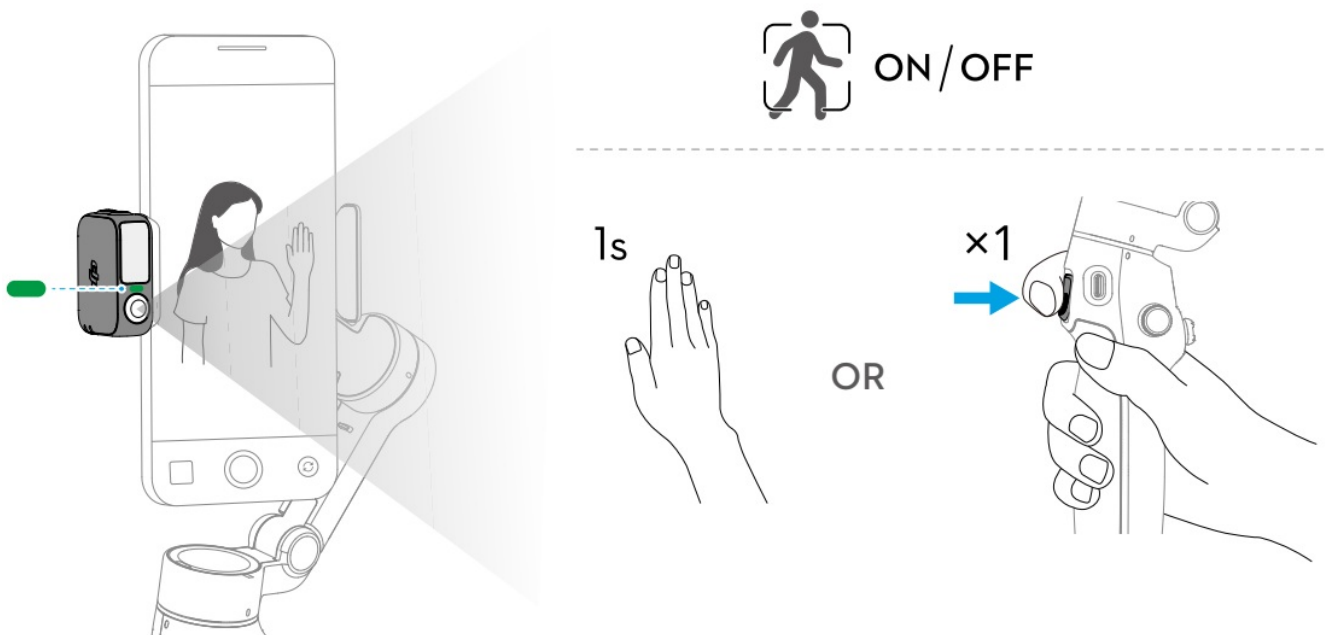
- Multifunctional Module supports tracking people only.
- The tracking and shooting features of Multifunctional Module are disabled in DJI Mimo.
- Position the tracking camera of Multifunctional Module and the phone camera towards the subject. For example, both cameras are used to take selfies in the following illustrations.
- To achieve optimal gesture recognition, keep the subject 0.5m to 3m away from the tracking camera.
- During tracking, keep the subject 0.5m to 8m away from the tracking camera

Tracking

1. Enable Bluetooth on the phone and connect to the gimbal.




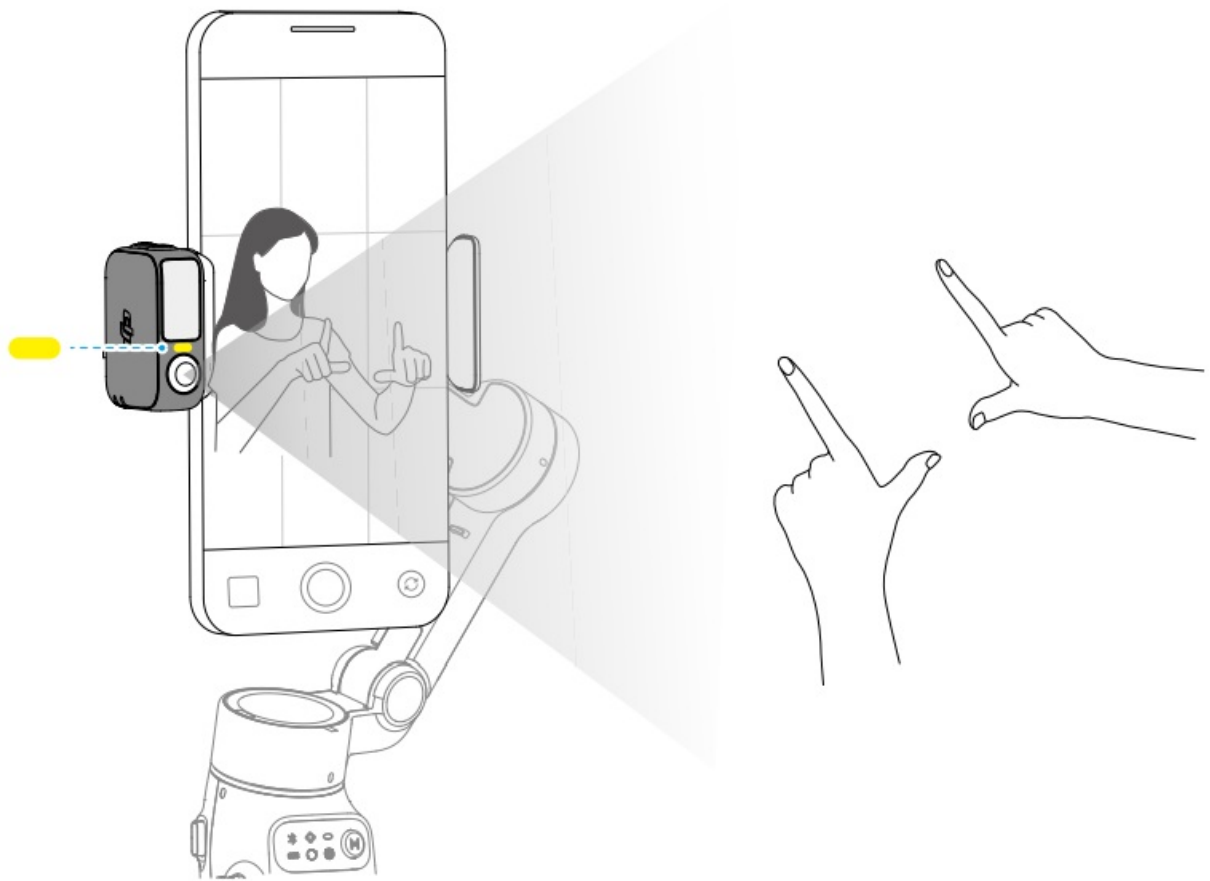
2. Enable tracking: Show the  gesture to the camera or press the trigger. The indicator turns solid green.





3. Adjust the composition as needed during tracking.

- Method 1: Use the joystick.
- Method 2: Use hand gestures.

Show the  gesture to the camera. The indicator turns solid yellow and tracking is automatically paused. The subject can move to the desired position in the frame.

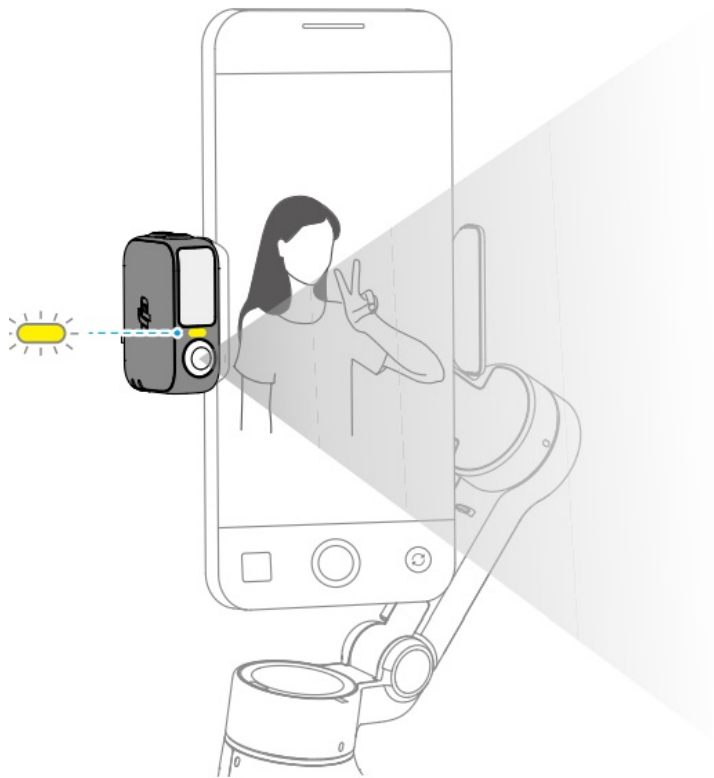


Show the  gesture again to confirm the composition. The indicator turns solid green and tracking automatically resumes. To restore the default composition for each method, press the trigger twice.

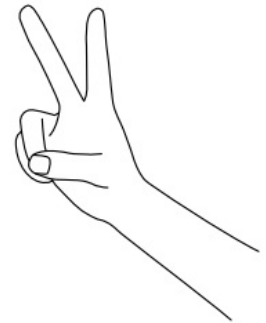
4. Stop tracking: Show the  gesture or press the trigger again. The indicator turns solid red.

Shooting

Whether tracking is enabled or not, you can use the gesture to start a countdown for taking a photo or starting/stopping recording. The indicator pulses yellow during the countdown.



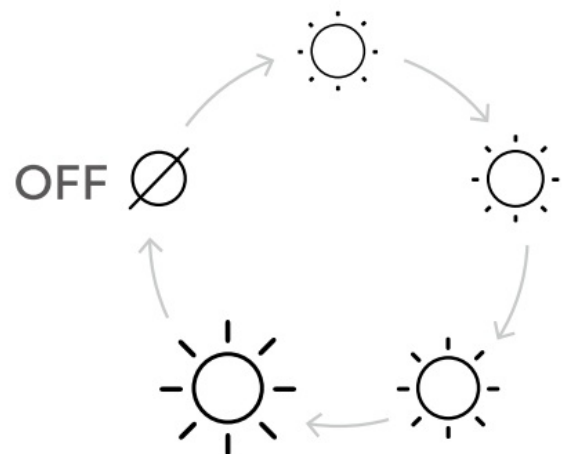
⌚ 3s



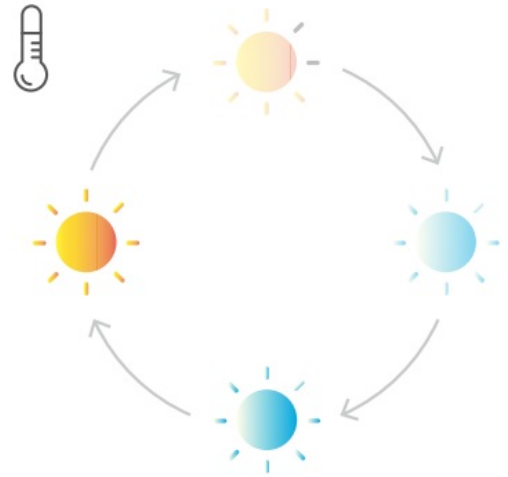
Fill Light

Make sure that Multifunctional Module is properly installed.

Adjust brightness:



Adjust color temperature

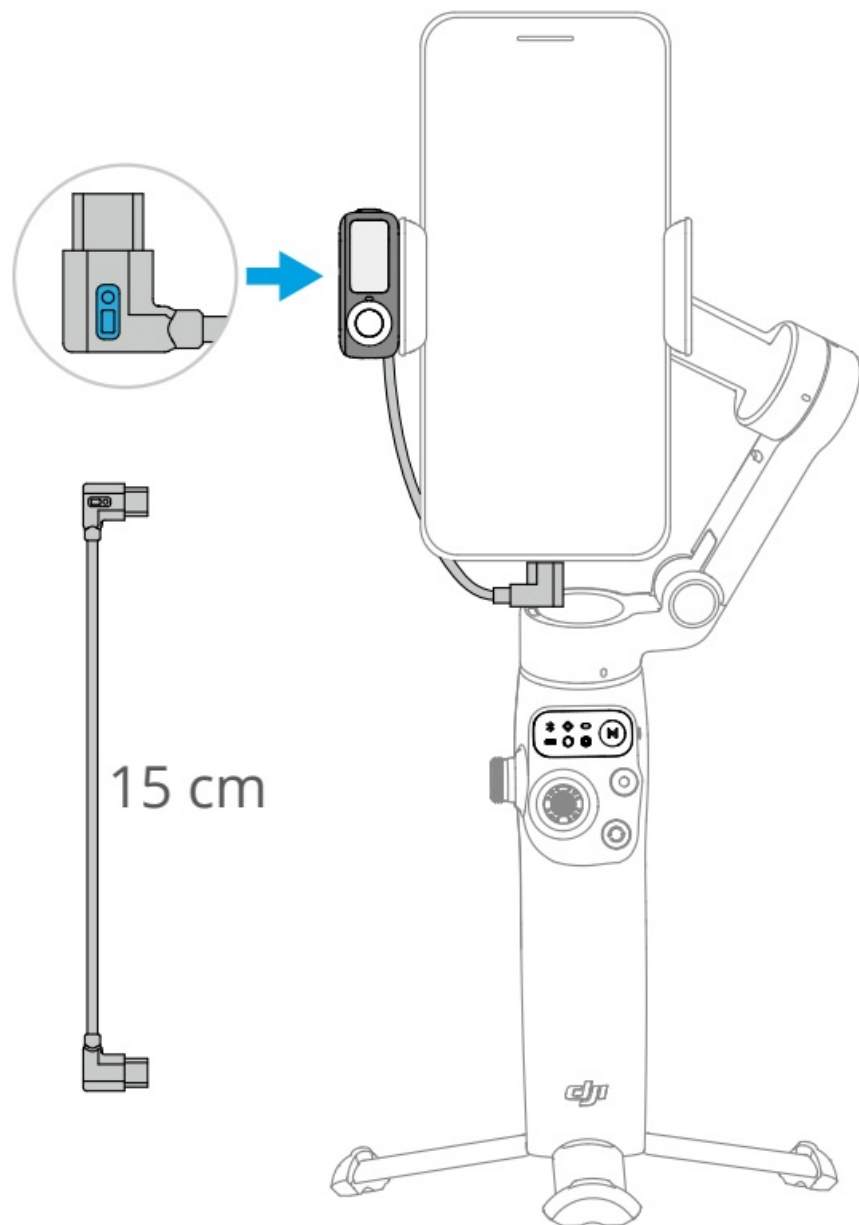


Connecting to Wireless Microphones

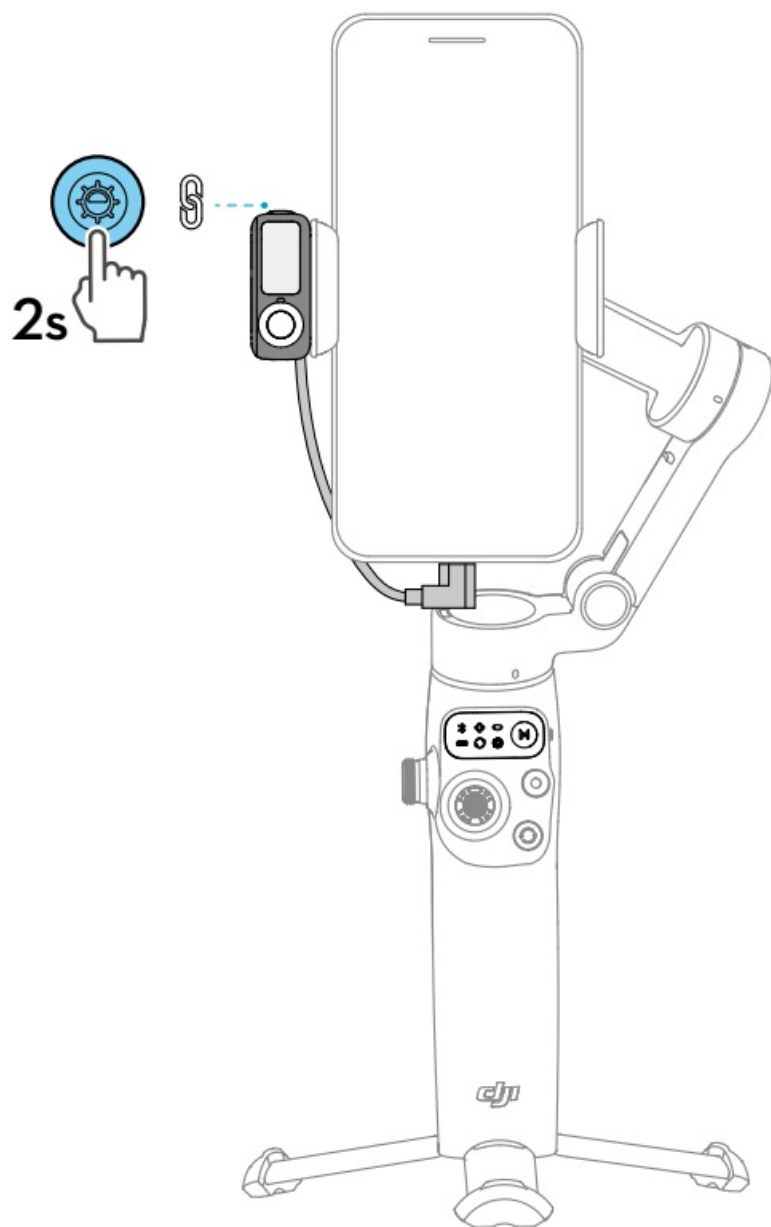
Multifunctional Module can connect to two wireless microphone transmitters (hereinafter referred to as “transmitters”). Supported transmitters:

- DJI Mic Mini

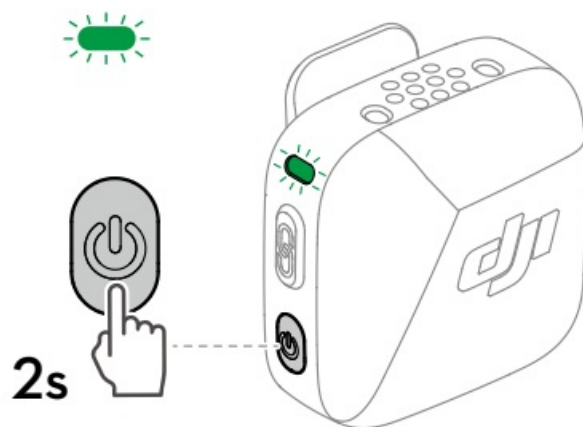
1. Connect Multifunctional Module to the phone.



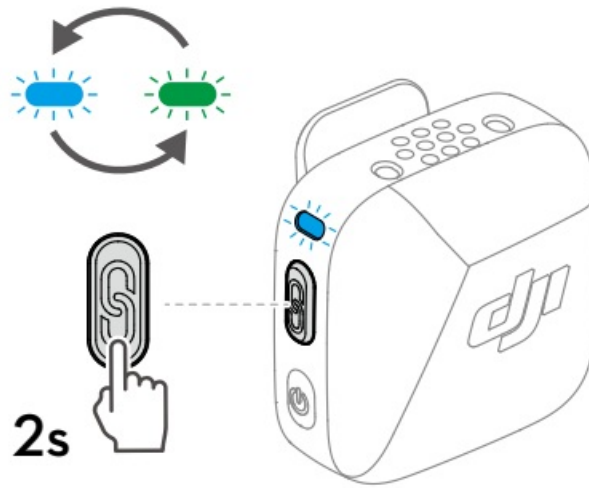
2. Enable Bluetooth pairing for Multifunctional Module.



3. Power on the transmitter.



4. Enable Bluetooth pairing for the transmitter.





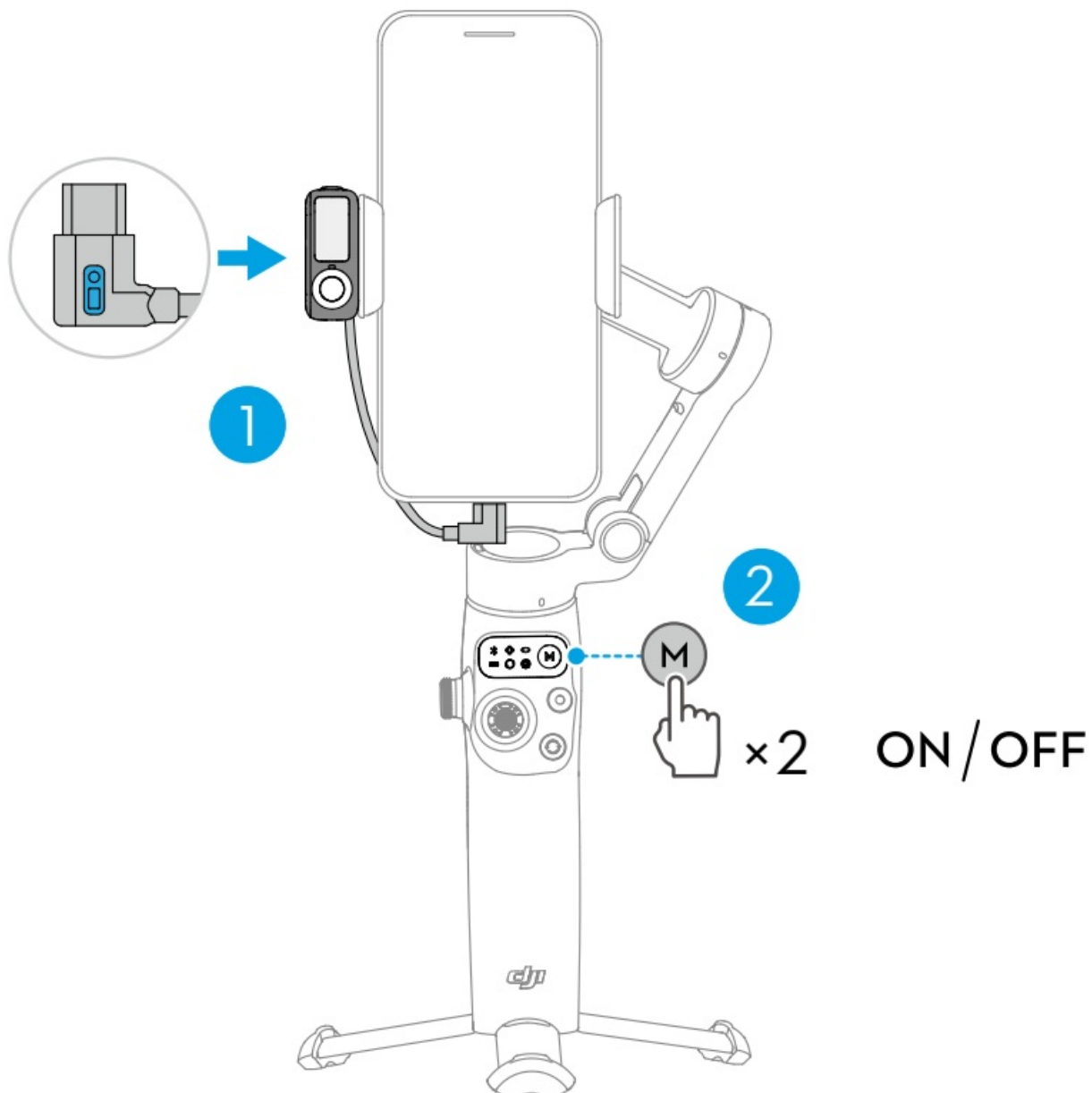
5. Once paired, both indicators of Multifunctional Module and the transmitter turn solid green. You can start recording



- To prevent the cable connecting Multifunctional Module and the phone from obstructing the gimbal, bend the cable as needed.
- For iPhone 14 and earlier models, a USB-C to Lightning cable (sold separately) is required to connect to Multifunctional Module.
- You can configure wireless microphone settings in DJI Mimo.

Phone Charging

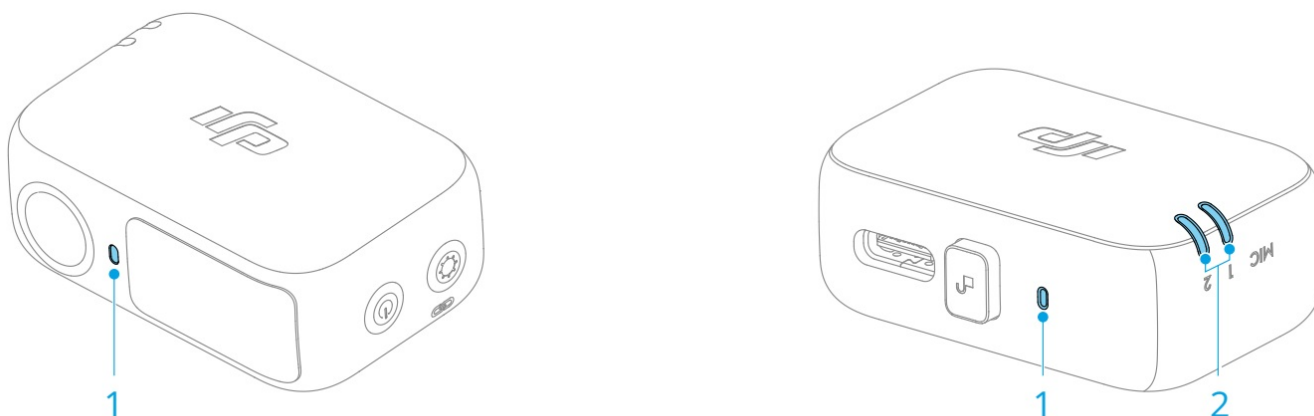
- Make sure that the gimbal is sufficiently charged (the indicator shows  or )








Firmware Update

Make sure that Multifunctional Module is properly installed. When using DJI Mimo to update the gimbal firmware, the module firmware is updated together. Please wait for the upgrade to complete.






Indicators



1. Camera Status Indicator

	Solid red	Tracking disabled or subject lost
	Solid green	Subject being tracked
	Blinks green	Subject lost temporarily
	Solid yellow	Composition being adjusted
	Blinks yellow 3s	Countdown for photo shooting or video recording

2. Wireless Microphone Status Indicator

	Blinks green quickly	Multifunctional Module pairing with a transmitter
	Blinks green slowly	Multifunctional Module paired with a transmitter but not connected to the phone using the cable
	Solid green	Ready for audio recording
	Solid red	Battery less than 10% for the paired transmitter
	Solid yellow	Noise cancelling enabled for the paired transmitter

Specifications

Visit <https://www.dji.com/osmo-mobile-7-series/specs> for more information

Contact

DJI SUPPORT



This content is subject to change without notice. Download the latest version from



<https://www.dji.com/osmo-mobile-7-series/downloads>


If you have any questions about this document, please contact DJI by sending a message to DocSupport@dji.com.

DJI and OSMO are trademarks of DJI. Copyright © 2025 DJI All Rights Reserved.

FAQ

- **Q: Can I use the Multifunctional Module with anysmartphone?**
 - A: The Multifunctional Module is compatible with smartphones meeting the specified requirements. Please refer to the user manual for details.
- **Q: How do I adjust the color temperature of the fill light?**
 - A: You can adjust the color temperature using the Color Temperature Control/Bluetooth Pairing Button on the Multifunctional Module.

Documents / Resources

	dji OM Multifunctional Module [pdf] User Manual OM Multifunctional Module, Multifunctional Module, Module
---	--

References

- [User Manual](#)

Manuals+, Privacy Policy

This website is an independent publication and is neither affiliated with nor endorsed by any of the trademark owners. The "Bluetooth®" word mark and logos are registered trademarks owned by Bluetooth SIG, Inc. The "Wi-Fi®" word mark and logos are registered trademarks owned by the Wi-Fi Alliance. Any use of these marks on this website does not imply any affiliation with or endorsement.