



# dji FC7BMC FPV Motion Controller User Guide

[Home](#) » [DJI](#) » dji FC7BMC FPV Motion Controller User Guide 

## Contents

- 1 dji FC7BMC FPV Motion Controller
- 2 Product Usage Instructions
- 3 INSTRUCTIONS
- 4 Introduction
- 5 Specifications
- 6 Compliance Information
- 7 Documents / Resources
  - 7.1 References
- 8 Related Posts



**dji FC7BMC FPV Motion Controller**



### Specifications:

- **Product Name:** Motion Controller
- **Version:** v1.2 2021.03
- **Power Input:** 5V, 1A

### Product Usage Instructions

#### Checking Battery Level and Power On/Off:

To check the battery level, press the power button once. To power on/off the motion controller, press the power button and then press and hold it.

#### Linking the Motion Controller:

Make sure all devices are powered on before linking:

1. Press and hold the power button of the aircraft until the battery level indicators blink in sequence.
2. Press and hold the power button of the motion controller until it beeps continually and the battery level indicators blink in sequence.
3. The motion controller stops beeping when linking is successful. The battery level indicators will turn solid and display the battery level.

Note: The aircraft must be linked with the goggles before linking with the motion controller.

**Using the Motion Controller:** The motion controller has several buttons and features for operation:

- **Lock Button:** Press twice to start the motors of the aircraft. Press and hold to automatically take off, ascend to approximately 1 meter, and hover. The aircraft will automatically land and the motors will stop.
- **Accelerator:** Press to fly in the direction of the circle in the goggles. Apply more pressure to fly faster. Release to stop flying.
- **Brake Button:** Press once to make the aircraft stop and hover. Press again to unlock the attitude and record the current position as zero attitude. Press and hold to initiate Return-to-Home (RTH) mode. Press again to cancel RTH.
- **Mode Button:** Press once to switch modes.
- **Gimbal Tilt Slider:** Push up and down to adjust the tilt of the gimbal.
- **Shutter/Record Button:** Press once to take a photo or start/stop recording. Press and hold to switch between photo and video mode.

### Frequently Asked Questions (FAQ):

#### How do I check the battery level of the motion controller?

Press the power button once to check the battery level.

#### How do I power on/off the motion controller?

To power on/off the motion controller, press the power button and then press and hold it.

#### How do I link the motion controller with the aircraft and goggles?

Follow these steps:

1. Make sure all devices are powered on.
2. Link the aircraft with the goggles first.
3. Then, follow the instructions to link the motion controller with the aircraft.

#### How do I start flying with the motion controller?

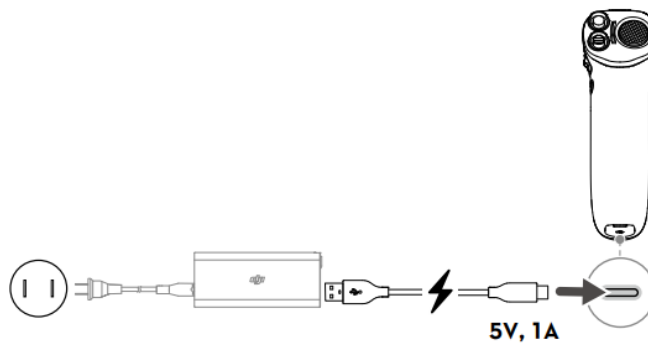
Use the various buttons and features of the motion controller, such as the Lock Button, Accelerator, Brake Button, Mode Button, Gimbal Tilt Slider, and Shutter/Record Button, as described in the user manual.

## INSTRUCTIONS

1

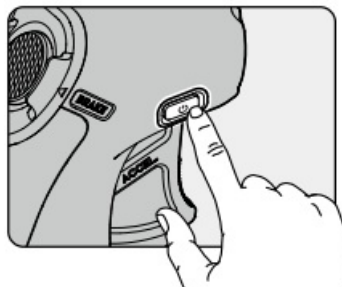


2



- **Check battery level:** Press once.
- **Power on/off:** Press then press and hold.

3

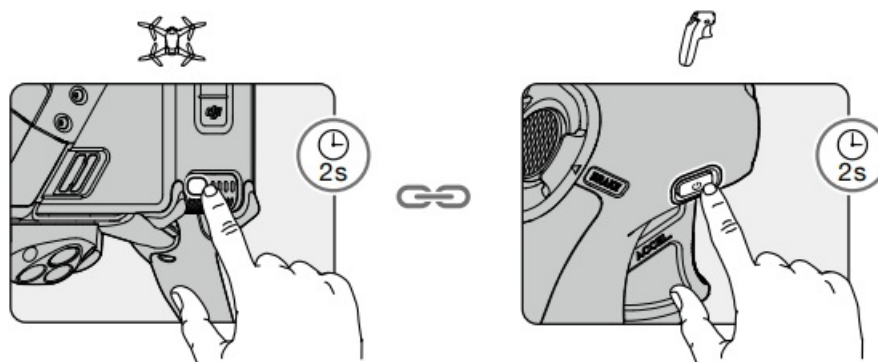


Make sure that all devices are powered on before linking.

1. Press and hold the power button of the aircraft until the battery level indicators blink in sequence.

2. Press and hold the power button of the motion controller until it beeps continually and the battery level indicators blink in sequence.
3. The motion controller stops beeping when linking is successful and both the battery level indicators turn solid and display the battery level.

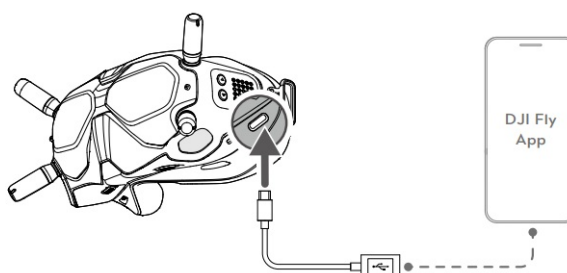
4



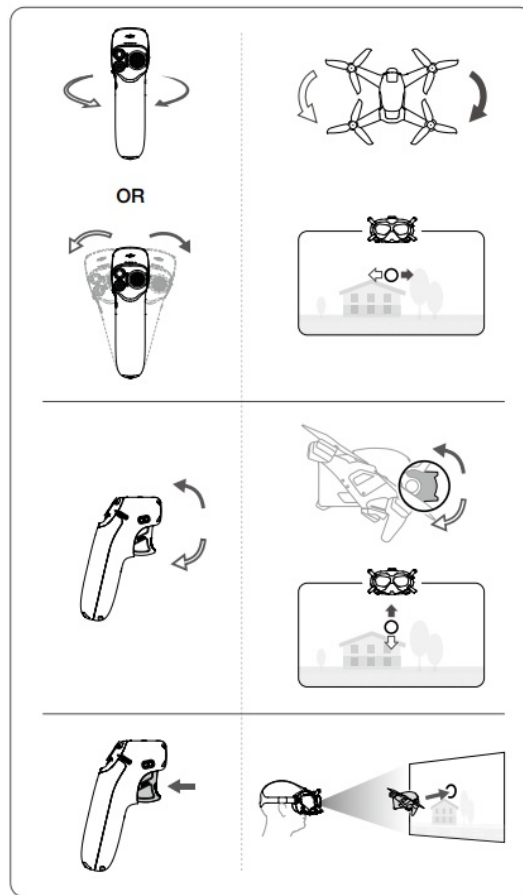
The aircraft must be linked with the goggles before the motion controller.

- Connect the USB-C port of the goggles to the mobile device, run DJI Fly, and follow the prompts to activate the Motion Controller.

5



**Normal Mode**



### Disclaimer and Warning

Please read this entire document and all safe and lawful practices DJI™ provided carefully before use. Failure to read and follow instructions and warnings may result in serious injury to yourself or others, damage to your DJI product, or damage to other objects in the vicinity. By using this product, you hereby signify that you have read this disclaimer and warning carefully and that you understand and agree to abide by the terms and conditions herein. You agree that you are solely responsible for your conduct while using this product and for any consequences thereof. DJI accepts no liability for damage, injury, or any legal responsibility incurred directly or indirectly from the use of this product.

DJI is a trademark of SZ DJI TECHNOLOGY CO., LTD. (abbreviated as “DJI”) and its affiliated companies. Names of products, brands, etc., appearing in this document are trademarks or registered trademarks of their respective owner companies. This product and document are copyrighted by DJI with all rights reserved. No part of this product or document shall be reproduced in any form without the prior written consent or authorization of DJI.

This document and all other collateral documents are subject to change at the sole discretion of DJI. For up-to-date product information, visit <http://www.dji.com> and click on the product page for this product. This disclaimer is available in various languages. In the event of divergence among different versions, the English version shall prevail.

### Introduction

When used with the DJI FPV Goggles V2, the DJI Motion Controller provides an immersive and intuitive flying experience that allows users to easily control the aircraft by tracking their hand movements.

### Usage

Visit <http://www.dji.com/dji-fpv> (DJI Motion Controller User Manual) to learn more about how to use this product.

## Specifications

Model	FC7BMC
Weight	167 g
Operating Frequency Range	2.400-2.4835 GHz; 5.725-5.850 GHz
Max Transmission Distance (unobstructed, free of interference)	10 km (FCC), 6 km (CE/SRRC/MIC)
Transmitter Power (EIRP)	2.4 GHz: ≤28.5 dBm (FCC), ≤20 dBm (CE/SRRC/MIC) 5.8 GHz: ≤31.5 dBm (FCC), ≤19 dBm (SRRC), ≤14 dBm (CE)
Operating Temperature Range	-10° to 40° C (14° to 104° F)
Max Runtime	5 hours

Please refer to <http://www.dji.com/service> for after-sales service for your product where applicable. DJI shall mean SZ DJI TECHNOLOGY CO., LTD. and/or its affiliated companies where applicable.

## Compliance Information

### FCC Compliance Notice

This device complies with Part 15 of the FCC Rules. Operation is subject to the following two conditions:

1. This device may not cause harmful interference, and
2. This device must accept any interference received, including interference that may cause undesired operation.

Any changes or modifications not expressly approved by the party responsible for compliance could void the user's authority to operate the equipment. This equipment has been tested and found to comply with the limits for a Class B digital device, under part 15 of the FCC Rules. These limits are designed to provide reasonable protection against harmful interference in a residential installation. This equipment generates, uses, and can radiate radio frequency energy and, if not installed and used by the instructions, may cause harmful interference to radio communications. However, there is no guarantee that interference will not occur in a particular installation. If this equipment does cause harmful interference to radio or television reception, which can be determined by turning the equipment off and on, the user is encouraged to try to correct the interference by one or more of the following measures:

- Reorient or relocate the receiving antenna.
- Increase the separation between the equipment and the receiver.
- Connect the equipment to an outlet on a circuit different from that to which the receiver is connected.
- Consult the dealer or an experienced radio/TV technician for help.

This equipment complies with FCC radiation exposure limits set forth for an uncontrolled environment. The end user must follow the specific operating instructions to satisfy RF exposure compliance. This transmitter must not be co-located or operating in conjunction with any other antenna or transmitter. The portable device is designed to meet the requirements for exposure to radio waves established by the Federal Communications Commission (USA). These requirements set a SAR limit of 1.6 W/kg averaged over one gram of tissue. The highest SAR value reported under this standard during product certification for use when properly worn on the body.

### ISED Compliance Notice

This device contains license-exempt transmitter(s)/receiver(s) that comply with Innovation, Science, and Economic Development Canada's license-exempt RSS(s). Operation is subject to the following two conditions:

1. This device may not cause interference.
2. This device must accept any interference, including interference that may cause undesired operation of the device.

This equipment complies with ISED radiation exposure limits set forth for an uncontrolled environment. The end user must follow the specific operating instructions to satisfy RF exposure compliance. This transmitter must not be co-located or operating in conjunction with any other antenna or transmitter. The portable device is designed to meet the requirements for exposure to radio waves established by the ISED. These requirements set a SAR limit of 1.6 W/kg averaged over one gram of tissue. The highest SAR value reported under this standard during product certification for use when properly worn on the body.

- KCC Compliance Notice
- NCC Compliance Notice

**Compliance Statement:** SZ DJI TECHNOLOGY CO., LTD. hereby declares that this device is in compliance with the essential requirements and other relevant provisions of Directive 2014/53/EU. A copy of the EU Declaration of Conformity is available online at [www.dji.com/euro-compliance](http://www.dji.com/euro-compliance)

**Contact address:** DJI GmbH, Industriestrasse 12, 97618, Niederlauer, Germany

**Compliance Statement:** SZ DJI TECHNOLOGY CO . LTD. hereby declares that this device is in compliance with the essential requirements and other relevant provisions of Radio Equipment Regulations 2017.

A copy of the GB Declaration of Conformity is available online at [www.dji.com/eurocompliance](http://www.dji.com/eurocompliance).

#### **Environmentally friendly disposal**

Old electrical appliances must not be disposed of together with the residual waste, but have to be disposed of separately. The disposal at the communal collecting point via private persons is free. The owner of old appliances is responsible for bringing the appliances to these collection points or similar collection points. With this little personal effort, you contribute to recycling valuable raw materials and the treatment of toxic substances.

#### **WE ARE HERE FOR YOU**

Contact DJI SUPPORT via Facebook Messenger



SUBSCRIBE FOR MORE INFORMATION



[www.dji.com/dji-fpv/downloads](http://www.dji.com/dji-fpv/downloads)

