



dji CP.OS.00000281.01 Osmo Action GPS Bluetooth Remote Controller User Guide

[Home](#) » [DJI](#) » dji CP.OS.00000281.01 Osmo Action GPS Bluetooth Remote Controller User Guide 

Contents

- 1 [dji CP.OS.00000281.01 Osmo Action GPS Bluetooth Remote Controller](#)
- 2 [Product Information](#)
- 3 [Safety Guidelines](#)
- 4 [Introduction](#)
- 5 [Overview](#)
- 6 [Button Features](#)
- 7 [Screen Description](#)
- 8 [Operation](#)
 - 8.1 [Installation Methods](#)
 - 8.2 [Linking](#)
 - 8.3 [Controlling the Cameras](#)
- 9 [Product Usage Instructions](#)
- 10 [Specifications](#)
- 11 [Contact DJI SUPPORT](#)
- 12 [Documents / Resources](#)



dji CP.OS.00000281.01 Osmo Action GPS Bluetooth Remote Controller



Product Information

The Osmo Action GPS Bluetooth Remote Controller is a device designed to control DJI Osmo Action cameras. It can be easily installed in various places such as the handlebar of a bicycle, allowing for flexible shooting in different sports scenes. The remote controller features several buttons and a screen that displays the status of the connected camera, battery level of the remote controller, and other information. It supports Bluetooth connection and has a USB-C port for charging.

Disclaimer

By using this product, you signify that you have read, understand, and accept the terms and conditions of this guideline and all instructions at <https://www.dji.com/osmo-action-4>. EXCEPT AS EXPRESSLY PROVIDED IN AFTER-SALES SERVICE POLICIES AVAILABLE AT [HTTPS://WWW. DJI.COM/SERVICE/POLICY](https://www.dji.com/service/policy), THE PRODUCT AND ALL MATERIALS AND CONTENT AVAILABLE THROUGH THE PRODUCT ARE PROVIDED “AS IS” AND ON “AS AVAILABLE BASIS” WITHOUT WARRANTY OR CONDITION OF ANY KIND.

Safety Guidelines

1. Put out any product fire using water, sand, a fire blanket, or a dry powder fire
2. The product should only be used in temperatures from -10° to 45° C (14° to 113° F).
3. DO NOT disassemble or pierce the product in any way or the battery may leak, catch fire, or
4. DO NOT drop or strike the DO NOT place heavy objects on the product.
5. DO NOT heat the DO NOT put the product in a microwave oven or a pressurized container.
6. DO NOT leave the product near heat sources such as a furnace or DO NOT leave the product inside of a vehicle on hot days. DO NOT store the product in environments above 45° C (113° F). The ideal storage temperature is 22° to 28° C (72° to 82° F).
7. DO NOT store the product for an extended period after fully discharging the Otherwise, the battery may over-discharge and cause irreparable damage.
8. Discharge and charge the battery completely once every three months to keep it in good working

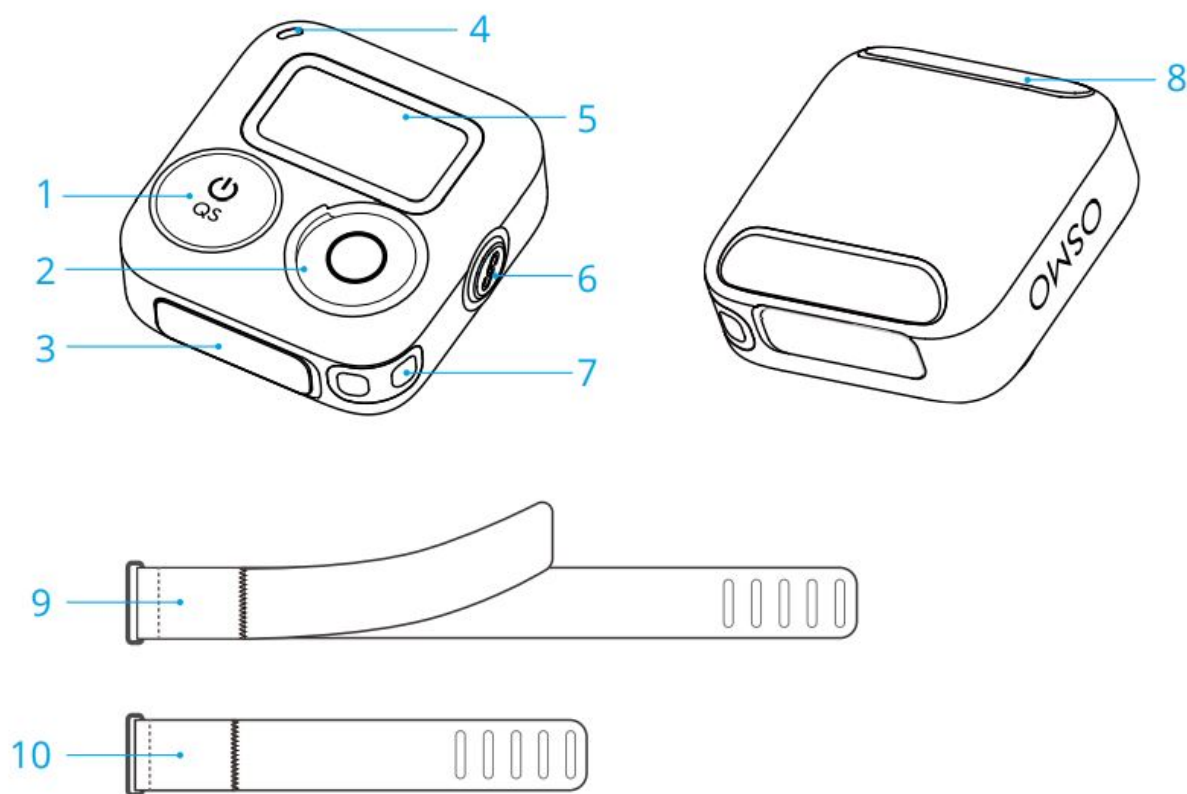
Introduction

OSMOTM Action GPS Bluetooth Remote Controller (hereinafter referred to as “remote controller”) connects to Osmo Action 4* via Bluetooth. Users can control the camera remotely to capture footage using the remote controller. The remote controller supports single-camera and multi-camera control modes so that users can shoot with up to 16 cameras simultaneously. The built-in satellite positioning modules enable users to record accurate data in motion. When used with the DJITM Mimo app, users can add a host of collected data to enrich the video, such as speed, route, direction, and elevation.

With the wrist strap, the remote controller can be installed in different places such as the handlebar of the bicycle, which can be flexibly adjusted to shoot in various sports scenes.

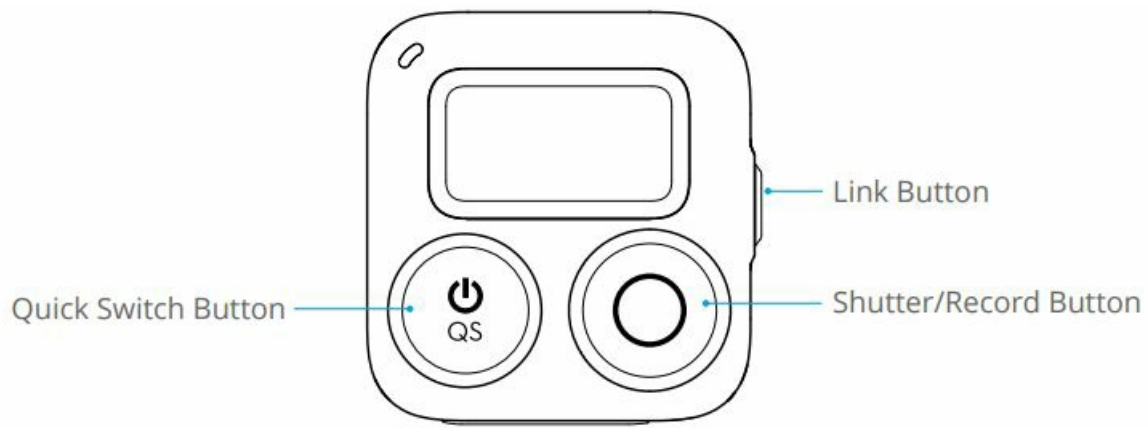
* Support for DJI devices will be updated continuously. Visit the corresponding DJI Osmo Action camera product page for a complete list.

Overview



- 1. Quick Switch Button
- 2. Shutter/Record Button
- 3. USB-C Port
- 4. Status LED
- 5. Screen
- 6. Link Button
- 7. Lanyard Hole
- 8. Wrist Strap Hole
- 9. Bluetooth RC Wrist Strap (Long)
- 10. Bluetooth RC Wrist Strap (Short)

Button Features

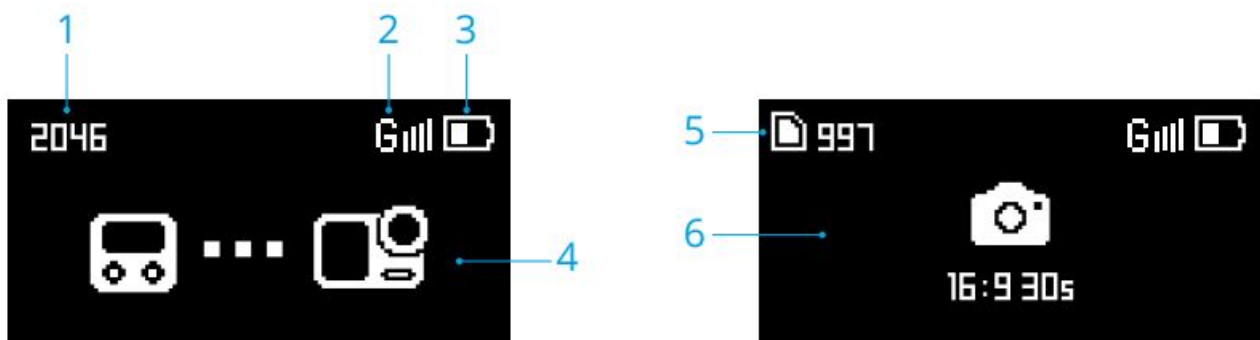


- **Quick Switch Button:** Used to switch between different camera modes.
 - Press and hold: power on or off the remote controller.
 - Press once: switch between shooting modes when connected to the camera.
- **Link Button:** Used for Bluetooth connection and linking with the camera.
 - Press and hold: link the remote controller and the camera.
 - Press once: power on the camera when the camera is in sleep mode and connected to the remote controller. During the linking process, press once to cancel linking.
- **Shutter/Record Button:** Used to capture photos or start/stop video recording.
 - Press and hold: power off the camera. When the camera is in sleep mode, press and hold to power on the camera.
 - Press once: take a photo or start/stop recording. When the camera is in sleep mode, press once to start SnapShot.

Note: both both scenarios refer to situations when the remote controller is connected to the camera.
- **Button Combinations**
 - Press and hold the shutter/record button and link button for four seconds: switch between single-camera control mode and multi-camera control mode and start linking.
 - Press and hold the quick switch button and shutter/record button for four seconds: view the firmware version of the remote controller
 - Press and hold the quick switch button and link button for four seconds: forget the Bluetooth connection and start linking.

Screen Description

The screen on the remote controller displays various information related to the camera and its connection. The screen displays the status of the connected camera, the battery level of the remote controller, and other information. When controlling multiple cameras, the screen displays the number of cameras connected. The display on the screen varies depending on the camera mode.



Here's a breakdown:

1. **Verification Code:** displays the verification code. When the camera is found, both the remote controller screen and the camera screen show the same verification code. Tap Accept on the camera screen.
2. **GPS Signal:** displays GPS signal strength. When the remote controller is searching for the GPS signal, the icon will be displayed.
3. **Battery Level:** displays the battery level of the remote controller.
4. **Connection Status:** displays the connection to the camera via Bluetooth.
5. **microSD Card Information:** displays either the remaining number of photos or the video duration that can be taken or recorded according to the current shooting mode. The icon is displayed only when a camera is connected.
6. **Screen Information:** the camera information will be synchronized when the camera is connected.

The screen will enter sleep mode after 3 minutes of inactivity. The remote controller will power off after 10 minutes of inactivity when not connected to a camera and not charging. Press any button to exit sleep mode and continue using the remote controller.

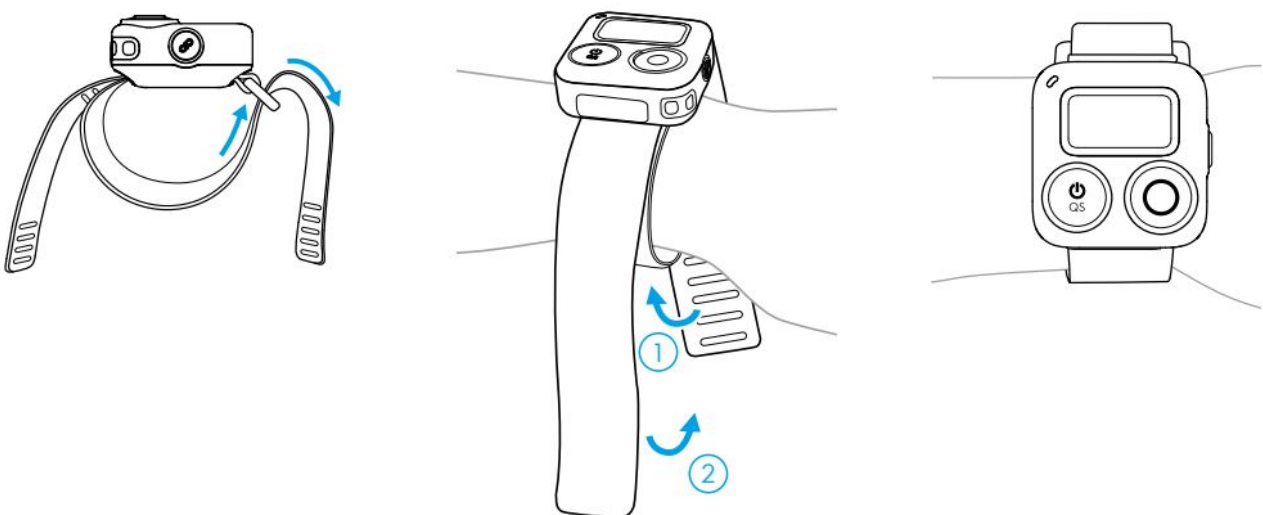
Operation

Installation Methods

The package includes two wrist straps of different lengths. The remote controller can be fixed to the wrist using the long wrist strap and can also be fixed to the bicycle handlebar, motorcycle handlebar, backpack strap, and other locations using the short wrist strap.

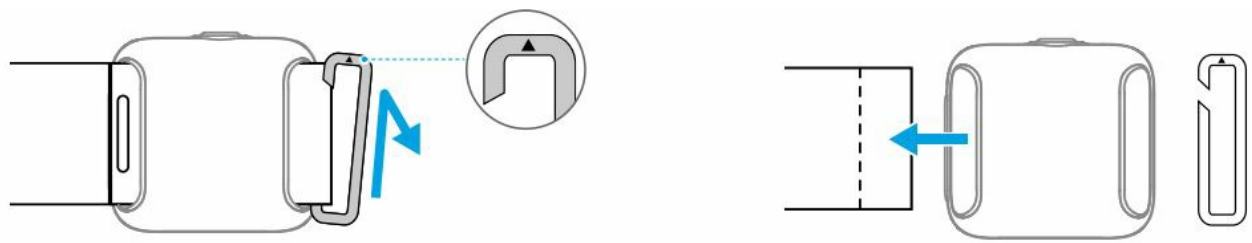
Installing the Long Wrist Strap

Fix the remote controller in a suitable position on the wrist and fasten the hook-and-loop fastener properly, as shown below.



Installing the Short Wrist Strap

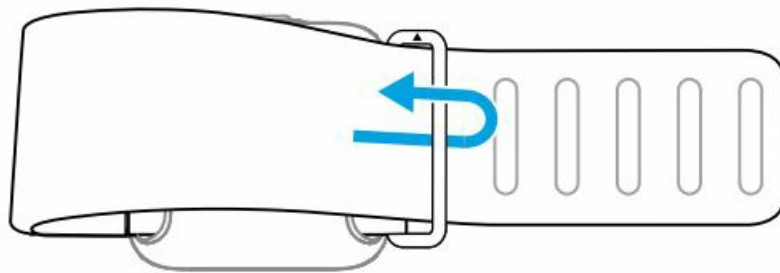
1. Remove the buckle from the hole of the long wrist strap, as shown



2. Thread the short wrist strap through the strap slot on the back of the remote controller.
Make sure that the side with the raised surface is facing upward.
3. Adjust the position of the remote controller on the wrist strap until one end of the strap slot reaches the raised surface. Thread the buckle through the hole on the short wrist strap.



4. Thread the strap through the buckle and fasten the hook-and-loop fastener properly.



Linking

Linking in Single-Camera Control Mode

When powered on, the remote controller automatically searches for and connects to any Osmo Action 4 cameras. Follow the prompts on the camera screen to link the devices.

Linking in Multi-Camera Control Mode

When powered on, the remote controller will be in single-camera control mode by default. Press and hold the shutter/record and link buttons for four seconds to switch into multi-camera control mode. Then the remote controller searches for the cameras and starts the linking process. Follow the prompts on the camera screen to link the devices. When controlling multiple cameras, the screen displays the number of cameras connected. During linking, the status LED of the remote controller will blink blue. After linking the remote controller to the camera, users can control the camera remotely to capture footage using the remote controller.

Controlling the Cameras

Single-Camera Control Mode

In single-camera control mode, press the quick switch button once to switch between shooting modes. The shooting modes that can be switched are the same as the settings in the camera. Press the shutter/record button once to take a photo or to start or stop recording.

Multi-Camera Control Mode

In multi-camera control mode, the remote controller can control each camera to use its set shooting mode to capture videos or images. Press the quick switch button to set all cameras to a unified shooting mode. Press the shutter/record button once to take a photo or start recording and press twice to stop recording. The shooting parameters will be based on the presets of each camera in this mode.

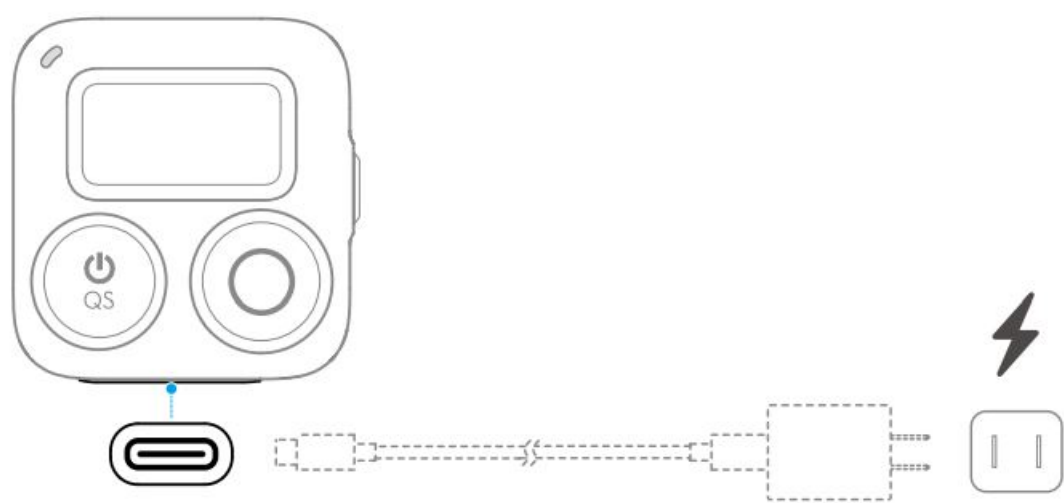
Dashboard

The built-in satellite positioning modules enable users to record fitness data accurately when shooting. When used with DJI Mimo, users can add a host of collected data to enrich the video, such as speed, route, direction, and elevation.

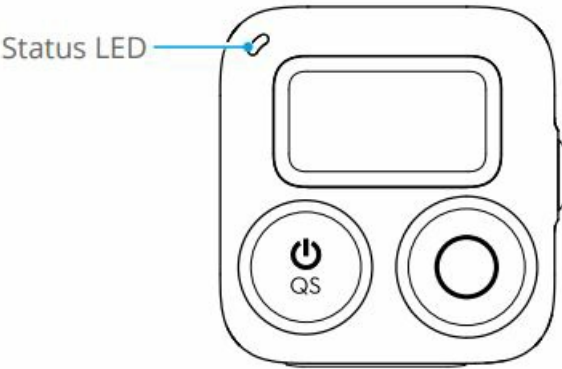
- Make sure to use the remote controller in an open outdoor environment to avoid signal interference and wait 1-2 minutes until the GPS signal is strong. Make sure the remote controller faces upward for the optimal GPS signal. DO NOT block the top of the remote controller with your hands or other objects.
- The remote controller does not have a GPS signal underwater. DO NOT use the remote controller underwater.

Charging the Battery

Connect the remote controller to a charger via the USB-C port.



Status LED



Status Indicator	Descriptions
Charging Status When Powered Off	
Solid green for 6 seconds and turns off	Charging completed
Blinks green four times	Charging, 76%-100%
Blinks green three times	Charging, 51%-75%

Blinks green twice	Charging, 26%-50%
Blinks green	Charging, 0%-25%
System Status	
Blinks red three times	Power on or off
Blinks blue	Linking
Operation Status	
Solid green	Ready to use
Temporarily off	Take a photo
Blinks red	Recording a video

Product Usage Instructions

1. Read and understand the safety guidelines provided in the user manual.
2. Ensure that the Osmo Action camera and the remote controller are both powered on.
3. On the remote controller, use the Quick Switch Button to select the desired camera mode.
4. Press and hold the Link Button on the remote controller to initiate Bluetooth connection.
5. On the camera, accept the connection request by tapping "Accept" on the screen and entering the verification code displayed on the remote controller.
6. Once linked, the screen on the remote controller will display relevant information about the camera and its connection status.
7. To capture a photo, press the Shutter/Record Button on the remote controller. To start or stop video recording, press and hold the Shutter/Record Button.
8. Monitor the battery level of the remote controller on the screen. Charge it using the USB-C port when necessary.
9. If controlling multiple cameras, the screen will display the number of connected cameras. Use the Quick Switch Button to switch between cameras.
10. When finished using the remote controller, ensure it is safely stored and powered off to conserve battery life.

Specifications


Model	OSMO-AF-336
Dimensions	40.5×38.6×20.5 mm
Weight	26 g
Waterproof Level	IPX7
Effective Remote Control Distance*	25 m
GNSS	GPS+BeiDou+Galileo+GLONASS
Bluetooth	
Protocol	BLE 5.0
Operating Frequency	2.4000-2.4835 GHz
Transmitter Power (EIRP)	<10 dBm
Battery	
Capacity	270 mAh
Battery Type	Chargeable Lithium Battery
Charging Temperature	0 ° to 45 ° C (32 ° to 113 ° F)
Operating Temperature	-10 ° to 45° C (-14 ° to 122° F)

* The effective remote control distance is measured in an interference-free outdoor environment without any obstacles.

Contact DJI SUPPORT

- <https://www.dji.com/osmo-action-4/downloads>
- This content is subject to change without prior notice.
- DJI and OSMO ACTION are trademarks of DJI. Copyright © 2023 DJI OSMO All Rights Reserved.

Documents / Resources

	<p>dji CP.OS.00000281.01 Osmo Action GPS Bluetooth Remote Controller [pdf] User Guide CP.OS.00000281.01 Osmo Action GPS Bluetooth Remote Controller, CP.OS.00000281.01, Osmo Action GPS Bluetooth Remote Controller, GPS Bluetooth Remote Controller, Bluetooth Remote Controller, Remote Controller, Controller</p>
---	---