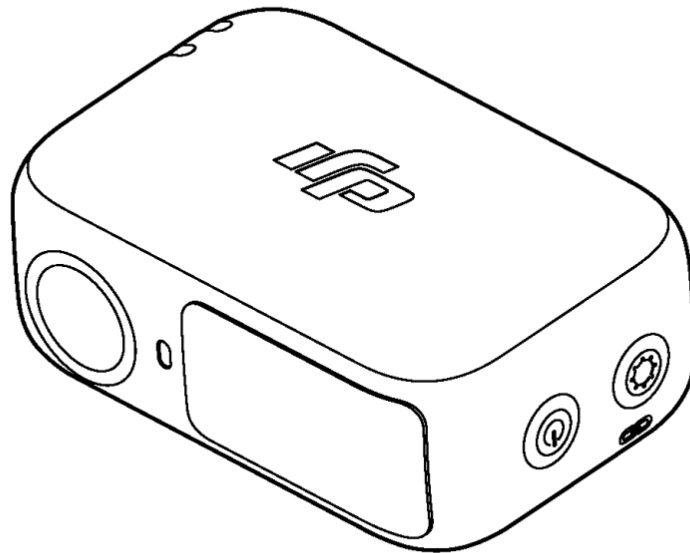


# dji 7 Series OM Multifunctional Module User Manual

[Home](#) » [DJI](#) » dji 7 Series OM Multifunctional Module User Manual 

## Contents

- 1 dji 7 Series OM Multifunctional Module
- 2 Searching for Keywords
- 3 Navigating to a Topic
- 4 Printing this Document
- 5 Legend
- 6 Read Before Use
- 7 Video Tutorials
- 8 1. Product Profile
- 9 2. Using the Product
  - 9.1 2.1 Installing and Removing
  - 9.2 2.2 Tracking and Shooting
- 10 Tracking
- 11 Shooting
  - 11.1 2.3 Fill Light
- 12 2.4 Connecting to Wireless Microphones
  - 12.1 2.5 Phone Charging
  - 12.2 2.6 Firmware Update
- 13 3. Indicators
- 14 4. Specifications
- 15 Specifications
- 16 FAQ
  - 16.1 Q: How do I know if my device is compatible with the Multifunctional Module?
  - 16.2 Q: Can I use third-party camera apps with the Multifunctional Module?
- 17 Documents / Resources
  - 17.1 References
- 18 Related Posts



## **USER MANUAL**

This document is copyrighted by DJI with all rights reserved. Unless otherwise authorized by DJI, you are not eligible to use or allow others to use the document or any part of the document by reproducing, transferring or selling the document. Only refer to this document and the content thereof as instructions to operate DJI products. The document should not be used for other purposes.

In the event of divergence among different versions, the English version shall prevail.

### **Searching for Keywords**

Search for keywords such as “battery” and “install” to find a topic. If you are using Adobe Acrobat Reader to read this document, press Ctrl+F on Windows or Command+F on Mac to begin a search.

### **Navigating to a Topic**

View a complete list of topics in the table of contents. Click on a topic to navigate to that section.

### **Printing this Document**

This document supports high resolution printing.

### **Legend**

- Important
- Hints and Tips
- Reference

### **Read Before Use**

DJI™ provides you with tutorial videos and the following documents:

1. Safety Guidelines
2. Quick Start Guide
3. User Manual

It is recommended to watch all the tutorial videos and read the Safety Guidelines before using for the first time. Make sure to review the Quick Start Guide before using for the first time and refer to this User Manual for more information.

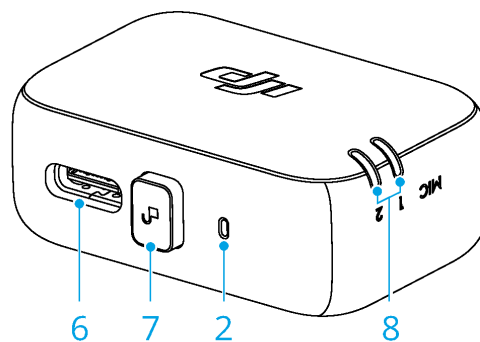
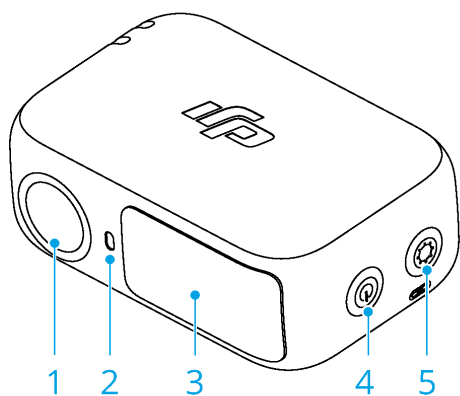
## Video Tutorials

Go to the address below or scan the QR code to watch the tutorial videos, which demonstrate how to use the product safely:



<https://www.dji.com/osmo-mobile-7-series/video>

## 1. Product Profile



1. Tracking Camera
2. Camera Status Indicator
3. Fill Light

4. Brightness Control Button
5. Color Temperature Control/Bluetooth Pairing Button
6. Audio Data/Phone Charging Port (USB-C)
7. Release Button
8. Wireless Microphone Status Indicator

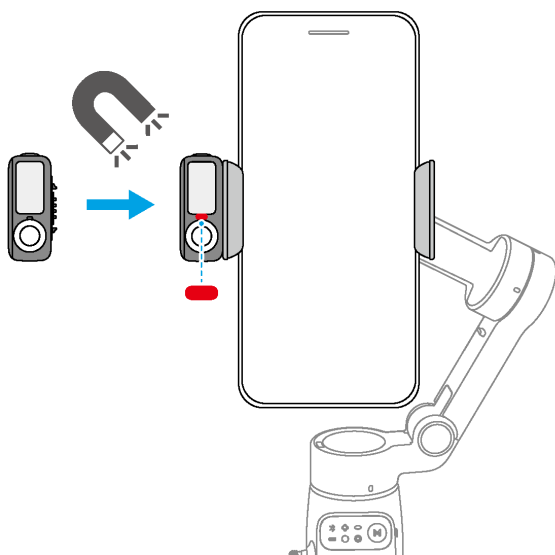
## 2. Using the Product

DJI OM Multifunctional Module is hereinafter referred to as “Multifunctional Module”.

### 2.1 Installing and Removing

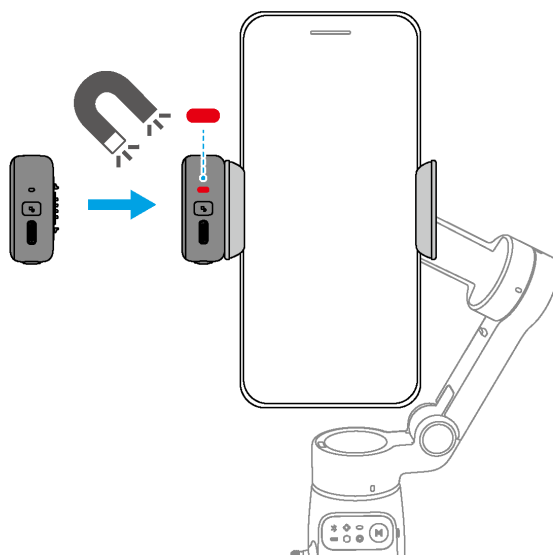
#### Example ①

Capture photos or videos of yourself



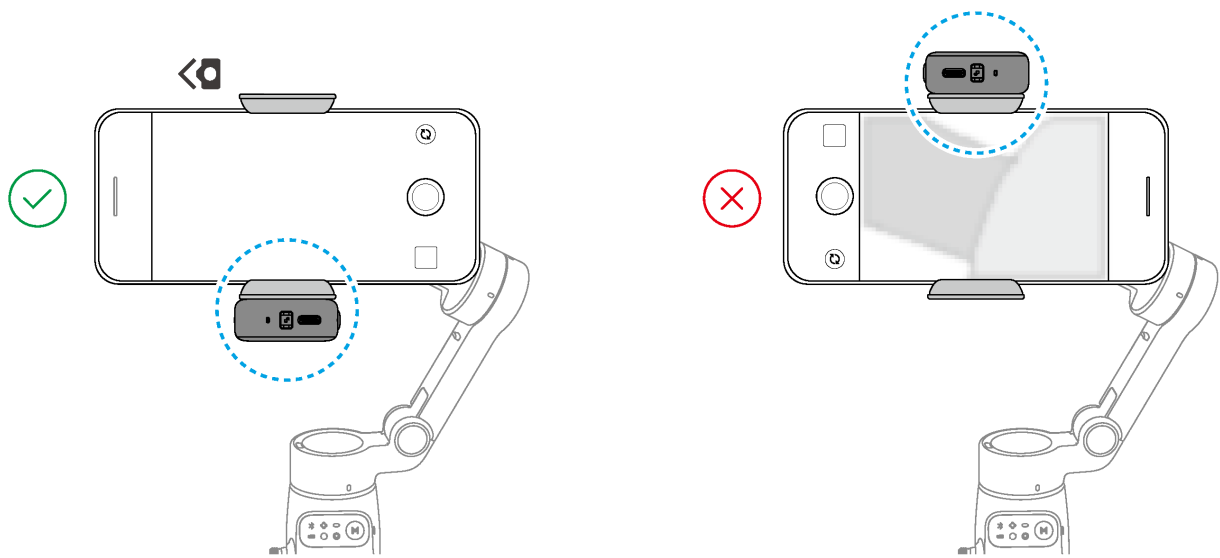
#### Example ②

Capture photos or videos of others

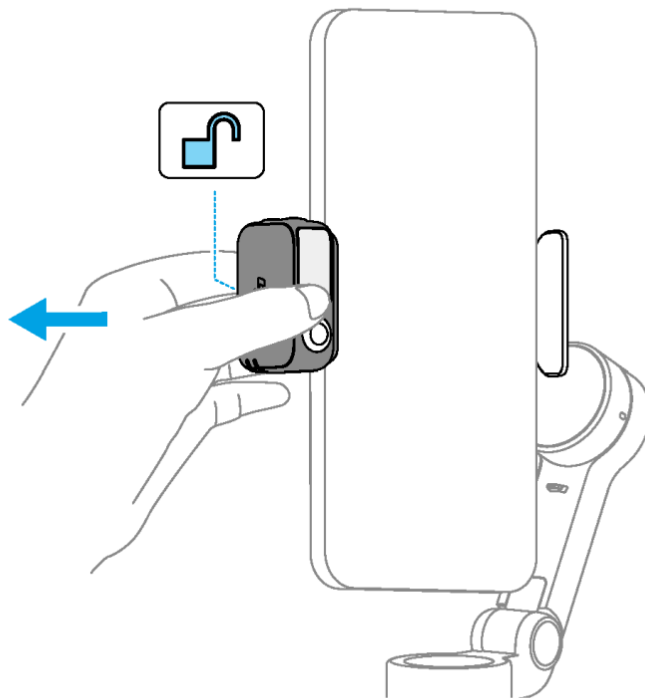


- If the indicator shown in the preceding figure does not turn on after Multifunctional Module is installed, check whether the marks on the gimbal and the phone clamp are aligned.
- If Multifunctional Module is idle for more than five minutes, it automatically enters sleep mode and the indicator turns off. To exit sleep mode, press the trigger on the gimbal.

Avoid blocking the rear camera when shooting in landscape mode.



Remove Multifunctional Module:



## 2.2 Tracking and Shooting

Multifunctional Module allows you to enable tracking in the system camera and thirdparty camera apps, without the need to use DJI Mimo.

### WARNING

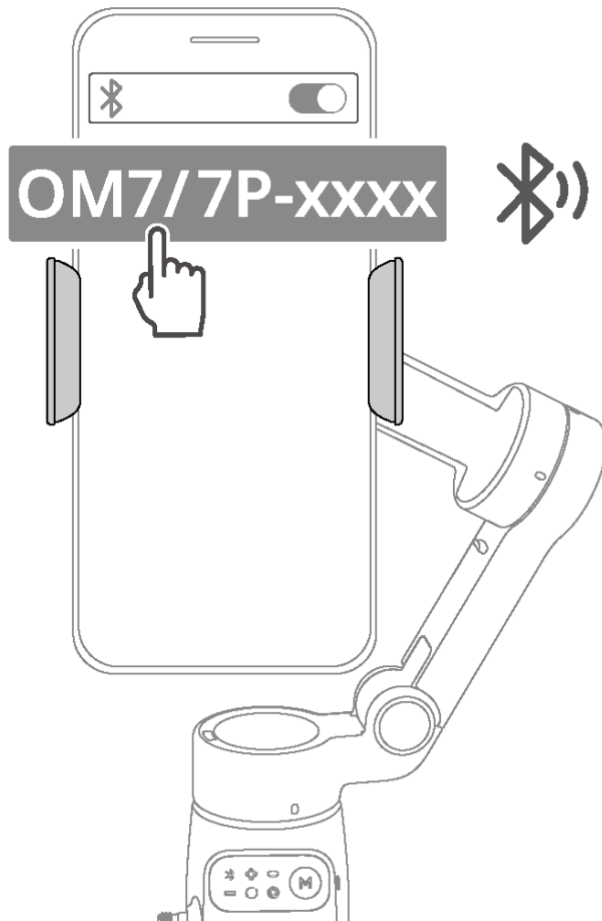
- Multifunctional Module supports tracking people only.
- The tracking and shooting features of Multifunctional Module are disabled in DJI Mimo.
- Position the tracking camera of Multifunctional Module and the phone camera towards the subject. For


example, both cameras are used to take selfies in the following illustrations.

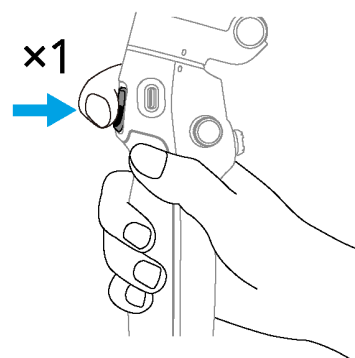
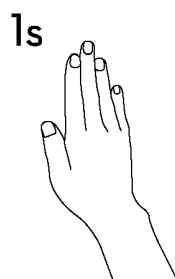
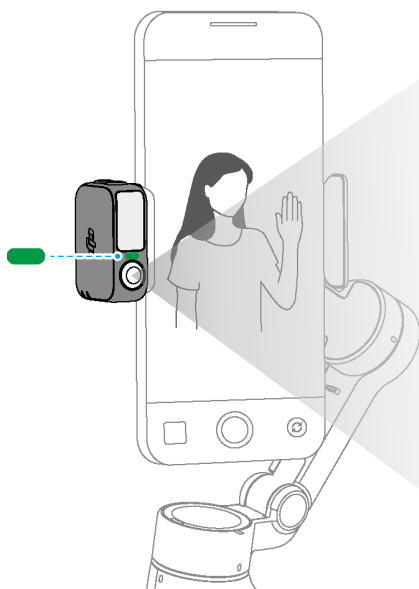
- To achieve optimal gesture recognition, keep the subject 0.5m to 3m away from the tracking camera.
- During tracking, keep the subject 0.5m to 8m away from the tracking camera.

## Tracking

1. Enable Bluetooth on the phone and connect to the gimbal.



2. Enable tracking: Show the  gesture to the camera or press the trigger. The indicator turns solid green.




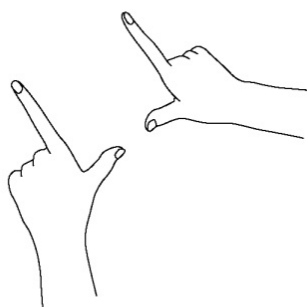
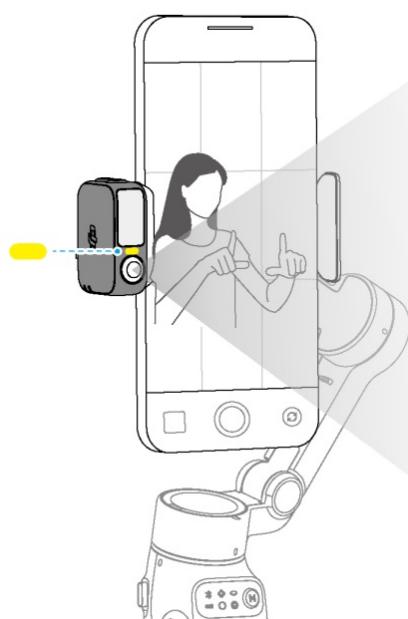
OR


3. Adjust the composition as needed during tracking.

- Method 1: Use the joystick.
- Method 2: Use hand gestures.




Show the  gesture to the camera. The indicator turns solid yellow and tracking is automatically paused. The subject can move to the desired position in the frame.



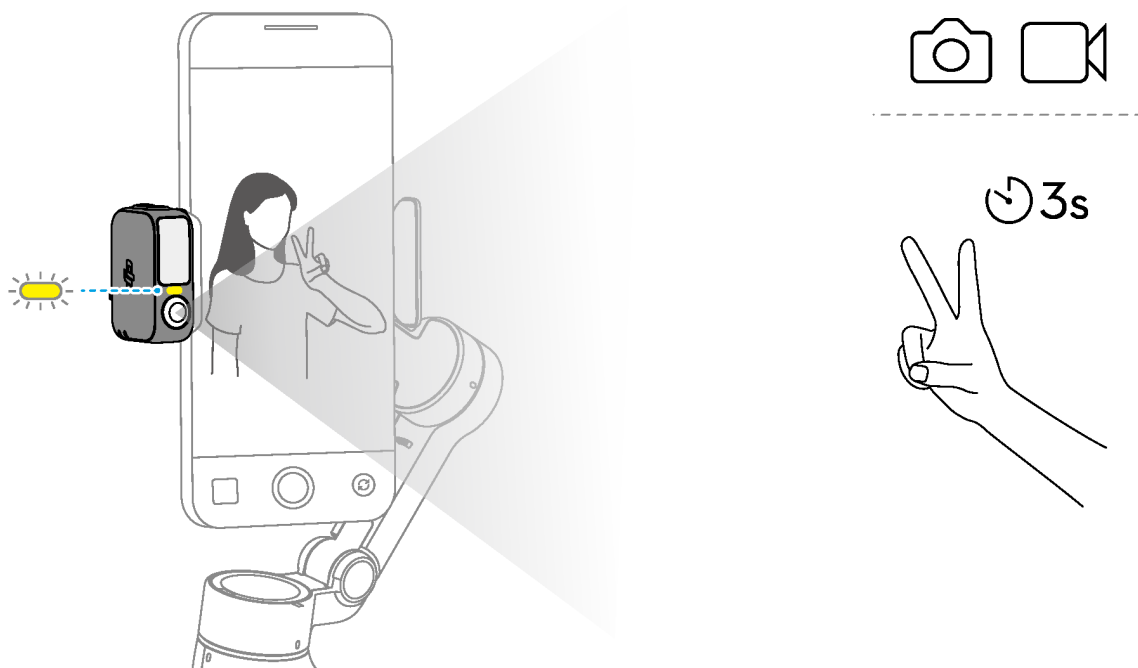
Show the  gesture again to confirm the composition. The indicator turns solid green and tracking automatically resumes.

To restore the default composition for each method, press the trigger twice.

**4. Stop tracking:** Show the  gesture or press the trigger again. The indicator turns solid red.

## Shooting

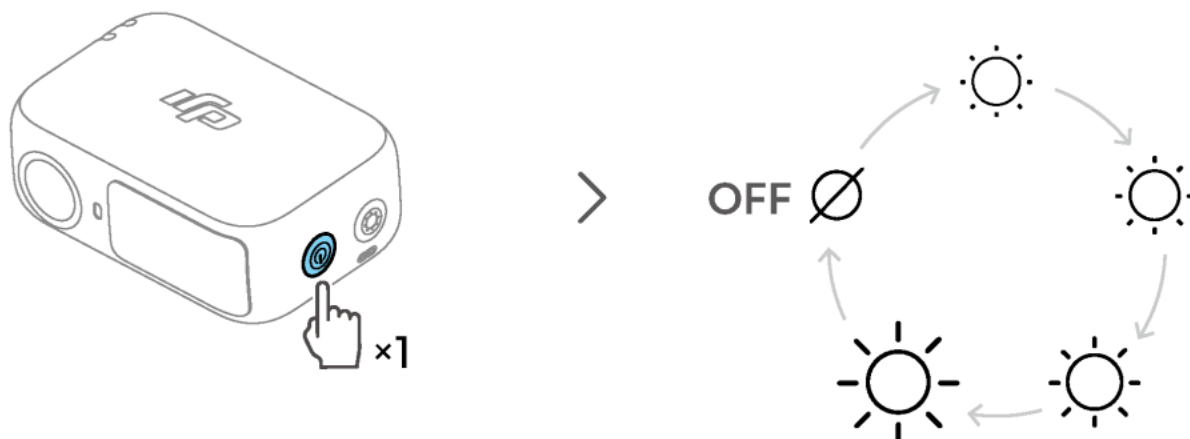
Whether tracking is enabled or not, you can use the gesture to start a countdown for taking a photo or starting/stopping recording. The indicator pulses yellow during the countdown.



### 2.3 Fill Light

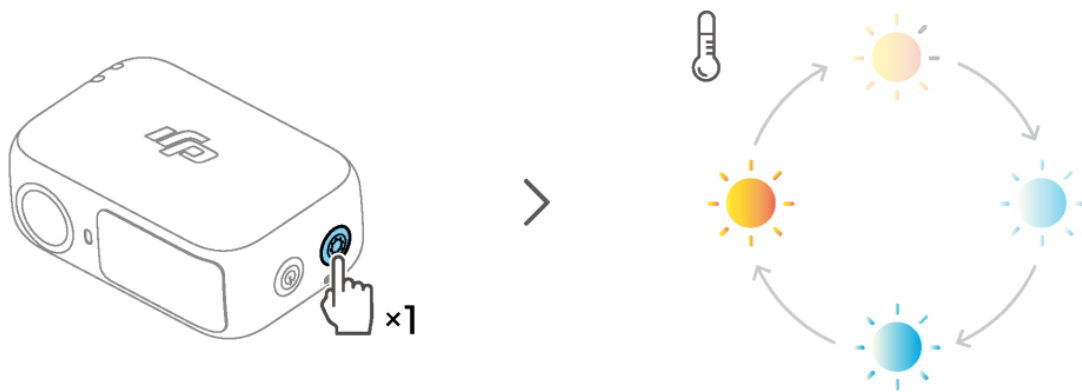
Make sure that Multifunctional Module is properly installed.

**Adjust brightness:**





Adjust color temperature:

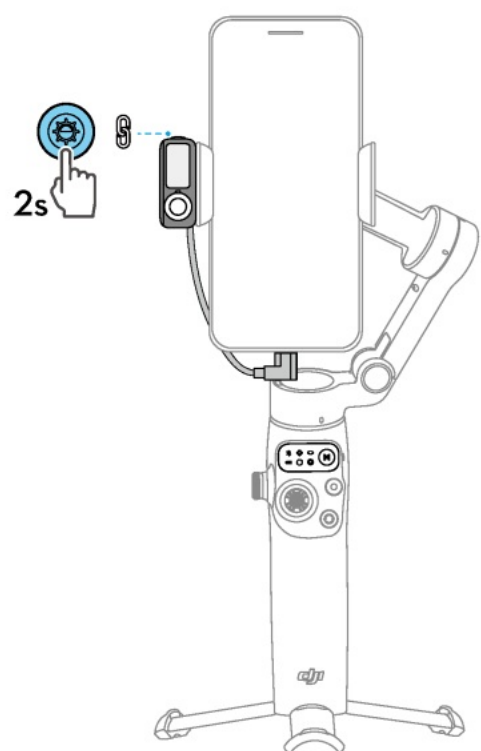
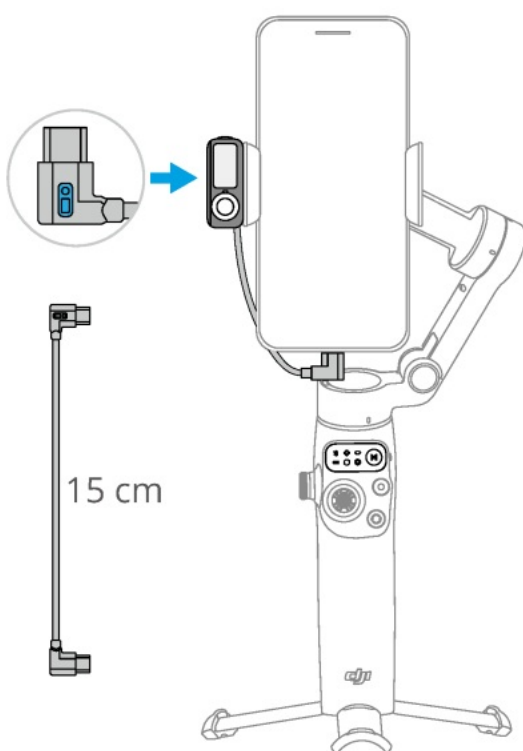


## 2.4 Connecting to Wireless Microphones

Multifunctional Module can connect to two wireless microphone transmitters (hereinafter referred to as “transmitters”). The two transmitters must be the same model. Supported transmitters:

- DJI Mic Mini
- DJI Mic 2

1. Connect Multifunctional Module to the phone.
2. Enable Bluetooth pairing for Multifunctional Module.



3. Power on the transmitter and set linking mode. For more information, refer to the

User Manual of the corresponding microphone on the official website.

- DJI Mic Mini: Linking mode with the receiver.
- DJI Mic 2: Linking mode via Bluetooth.

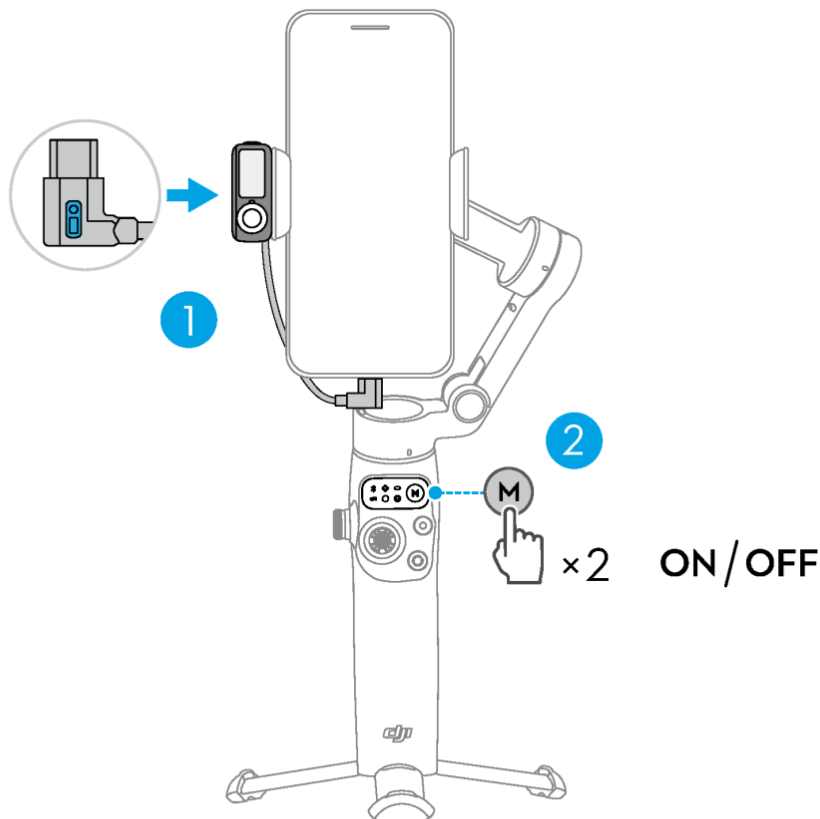
4. Once linked, the indicator of Multifunctional Module turns solid green. The indicator of the transmitter switches to the linked status in the corresponding mode. You can start recording.

- To prevent the cable connecting Multifunctional Module and the phone from obstructing the gimbal, bend the cable as needed. Make sure to use the cable included in the package.
- For iPhone 14 and earlier models, a USB-C to Lightning cable (sold separately) is required to connect to Multifunctional Module.
- You can configure wireless microphone settings in DJI Mimo. This feature applies to DJI Mic Mini only.

DJI OM Multifunctional Module User Manual ©

## 2.5 Phone Charging

Make sure that the gimbal is sufficiently charged (the indicator shows  or  ).



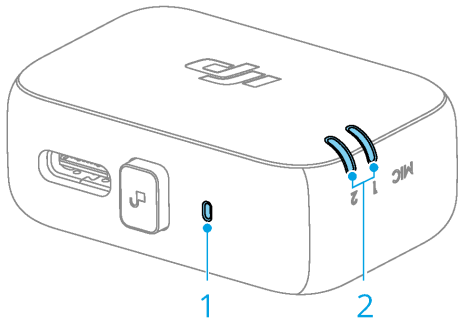
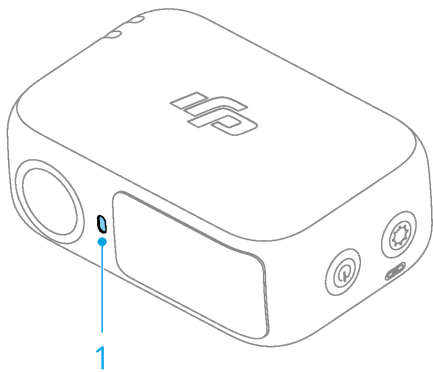
## 2.6 Firmware Update

Make sure that Multifunctional Module is properly installed.






When using DJI Mimo to update the gimbal firmware, the module firmware is updated together. Please wait for the

upgrade to complete.






3. Indicators



1. Camera Status Indicator

	—	Solid red	Tracking disabled or subject lost
	—	Solid green	Subject being tracked
	.....	Blinks green	Subject lost temporarily
	—	Solid yellow	Composition being adjusted
	..... 3s	Blinks yellow	Countdown for photo shooting or video recording

2. Wireless Microphone Status Indicator

	.....	Blinks green quickly	Multifunctional Module pairing with a transmitter
	.....	Blinks green slowly	Multifunctional Module paired with a transmitter but not connected to the phone using the cable
	—	Solid green	Ready for audio recording
	—	Solid red	Battery less than 10% for the paired transmitter
	—	Solid yellow	Noise cancelling enabled for the paired transmitter

4. Specifications

Visit <https://www.dji.com/osmo-mobile-7-series/specs> for more information.



This content is subject to change without notice.

**Download the latest version from**



<https://www.dji.com/osmo-mobile-7-series/downloads>

If you have any questions about this document, please contact DJI by sending a message to [DocSupport@dji.com](mailto:DocSupport@dji.com).

DJI and OSMO are trademarks of DJI.

Copyright © 2025 DJI All Rights Reserved.

## Specifications

- Tracking Camera
- Camera Status Indicator
- Fill Light
- Brightness Control Button
- Color Temperature Control/Bluetooth Pairing Button
- Audio Data/Phone Charging Port (USBC)
- Release Button
- Wireless Microphone Status Indicator

---

## FAQ


**Q: How do I know if my device is compatible with the Multifunctional Module?**

A: Please refer to the product specifications or contact DJI customer support for compatibility inquiries.

**Q: Can I use third-party camera apps with the Multifunctional Module?**

A: Yes, you can enable tracking features in both system cameras and third-party camera apps without DJI Mimo.

## Documents / Resources

<div><div>DJI OM Multifunctional Module</div><div>User Manual</div><div></div></div>	<div><div><a href="#">dji 7 Series OM Multifunctional Module</a> [pdf] User Manual</div><div>v1.2.1, 7 Series OM Multifunctional Module, 7 Series, OM Multifunctional Module, Multifunctional Module, Module</div></div>
---	--

References

- [User Manual](#)

[Manuals+](#), [Privacy Policy](#)

This website is an independent publication and is neither affiliated with nor endorsed by any of the trademark owners. The "Bluetooth®" word mark and logos are registered trademarks owned by Bluetooth SIG, Inc. The "Wi-Fi®" word mark and logos are registered trademarks owned by the Wi-Fi Alliance. Any use of these marks on this website does not imply any affiliation with or endorsement.