



## DIY Shadow Box Frame Set Installation Guide

[Home](#) » [DIY](#) » [DIY Shadow Box Frame Set Installation Guide](#) 

# DIY

## Shadow Box Frame Set Installation Guide

### Contents

#### [1 ASSEMBLY INSTRUCTIONS – SHADOW BOX FRAME](#)

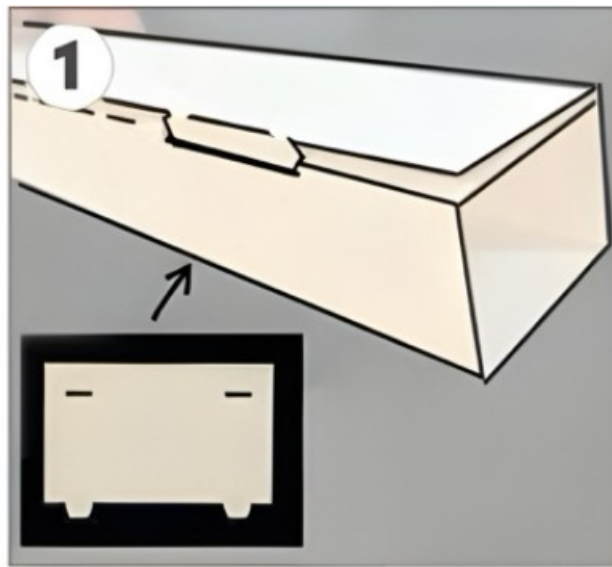
#### [2 Documents / Resources](#)

##### [2.1 References](#)

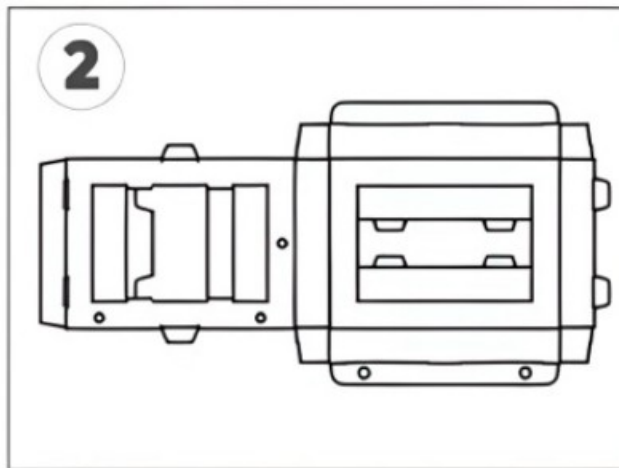
### ASSEMBLY INSTRUCTIONS – SHADOW BOX FRAME

There are 3 pieces: (1) printed body, and (2) internal supports. The internal supports may also be attached to each other by an incomplete die-cut. Carefully separate.

**STEP 1:** Fold each internal support into a rectangular shape, moving each panel towards the score lines. Insert the tabs into the slots and push to lock.



**STEP 2:** Ensure your work area is clean to avoid damaging the decorative exterior. Open the printed body so the window with 4 tabs is on the left, and the printing is facing down.

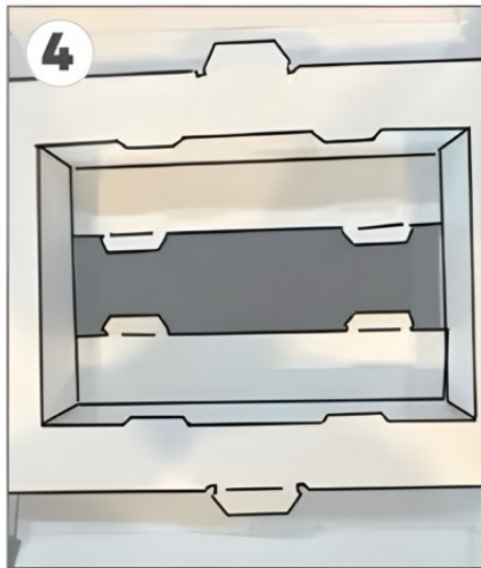


**STEP 3:** Gently fold the panels inside the tabbed window on the left toward the outside of the window so each forms right angles.

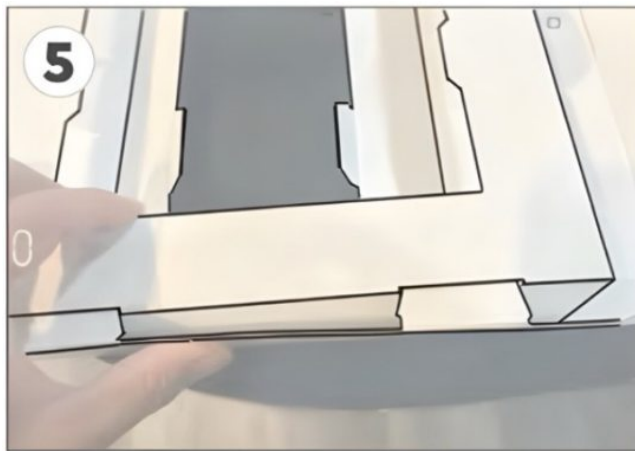


**STEP 4:** Moving left to right, gently fold over the tabbed window panel so it starts forming a box with the front. As you fold, keep the inside pieces at right angles. These will form the top and bottom side walls inside the frame.

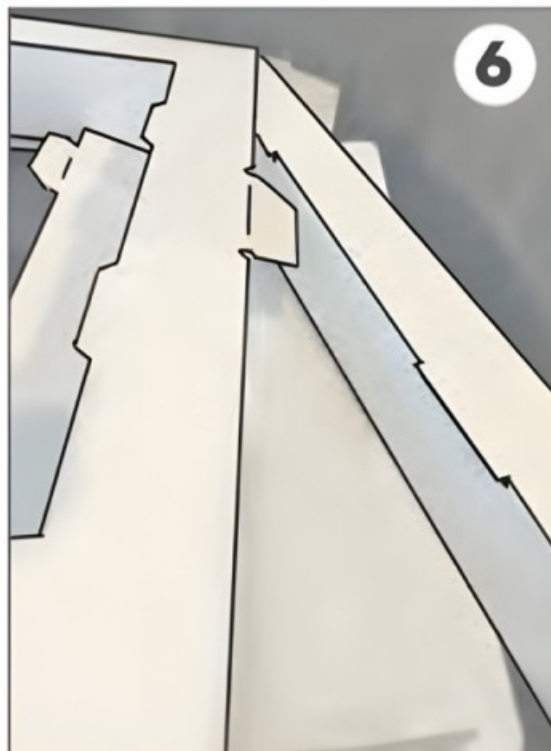
**TIP:** Prior to folding over, carefully pre-fold the panels at each score line. This will help prevent the cardboard from breaking at unintended areas.



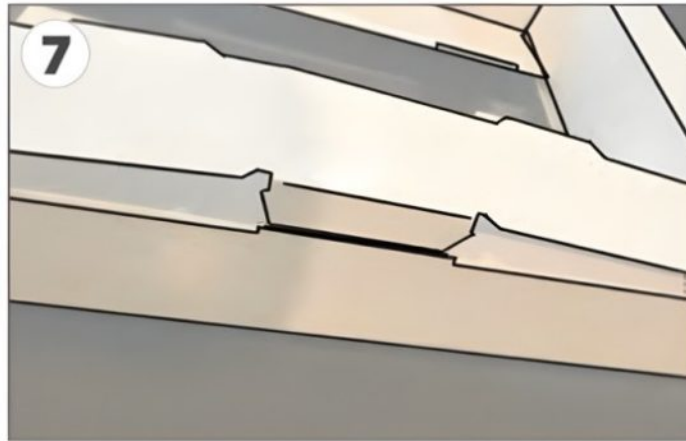
**STEP 5:** Lock tabs into corresponding slots.



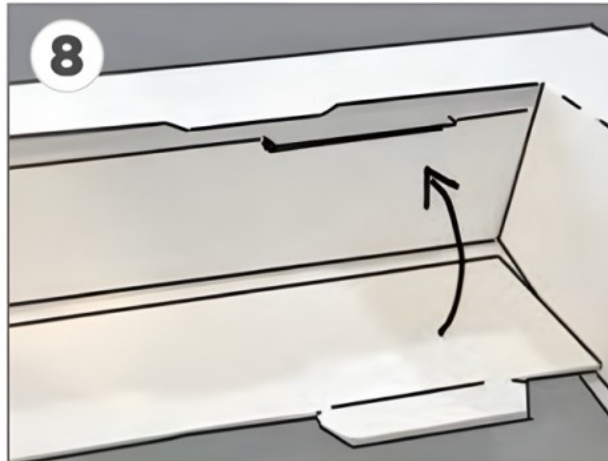
**STEP 6:** Insert the internal supports on the open sides so the exposed slots are in the window, away from the work table, and near the 4 window tabs



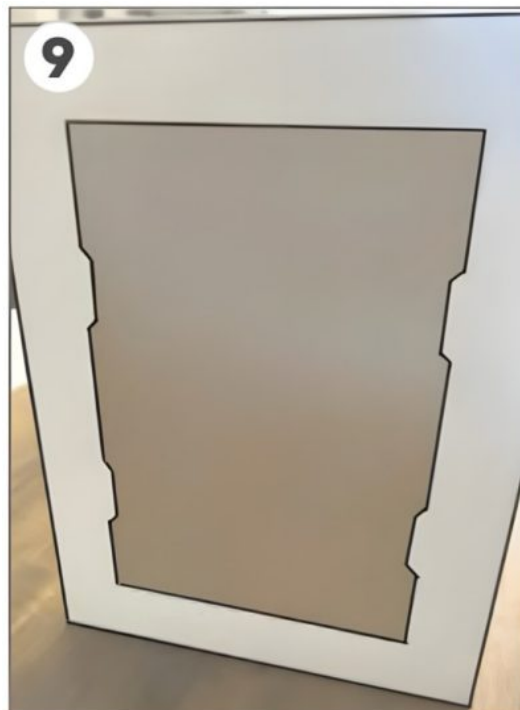
**STEP 7:** Close the side walls, and gently lift the back side panels to align the tabs for inserting into slots.



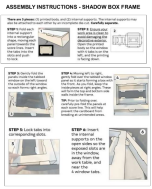
**STEP 8:** Fold the inside frame panels upward, fold the tabs inward, and insert into the internal support slots.



**STEP 9:** Use the 4 tabs to secure inside the frame a bagged comic with a backer card, or cut these tabs out if they are not needed for what you plan to display.



# DIY



## [DIY Shadow Box Frame Set](#) [pdf] Installation Guide

### Shadow Box Frame Set, Box Frame Set, Frame Set

## References

- [User Manual](#)

[Manuals+](#), [Privacy Policy](#)

This website is an independent publication and is neither affiliated with nor endorsed by any of the trademark owners. The "Bluetooth®" word mark and logos are registered trademarks owned by Bluetooth SIG, Inc. The "Wi-Fi®" word mark and logos are registered trademarks owned by the Wi-Fi Alliance. Any use of these marks on this website does not imply any affiliation with or endorsement.