



Dixon CS-7200G Wireless Multimedia Keyboard & Mouse User Manual

[Home](#) » [Dixon](#) » Dixon CS-7200G Wireless Multimedia Keyboard & Mouse User Manual 

Contents

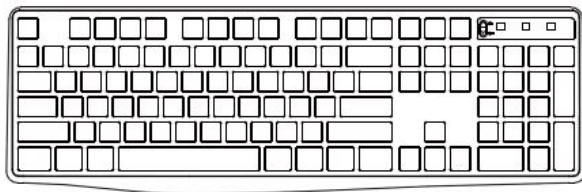
- [1 Dixon CS-7200G Wireless Multimedia Keyboard & Mouse](#)
- [2 Packing List](#)
- [3 Operation Guides](#)
- [4 Functions of Combination Keys](#)
- [5 Features](#)
- [6 Solution to Connection Failures](#)
- [7 FCC Warning](#)
- [8 Documents / Resources](#)
- [9 Related Posts](#)



Dixon CS-7200G Wireless Multimedia Keyboard & Mouse



Packing List



x 1



x1



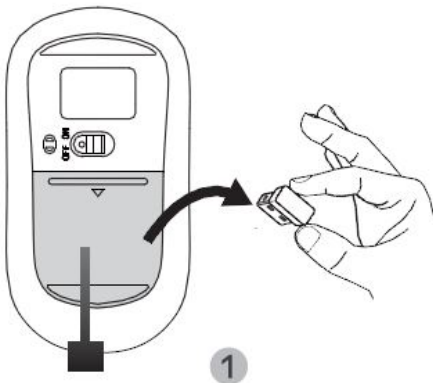
x1



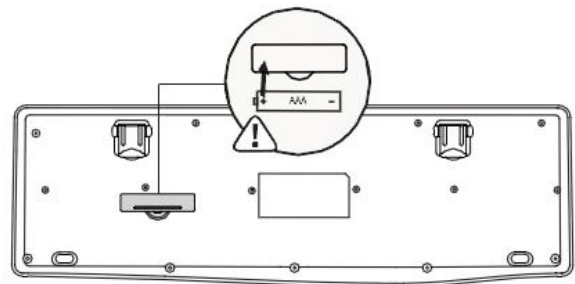
x 1

- Keyboard x1
- Mouse x1
- USB receiver x1 (in the mouse battery compartment)
- User manual x1

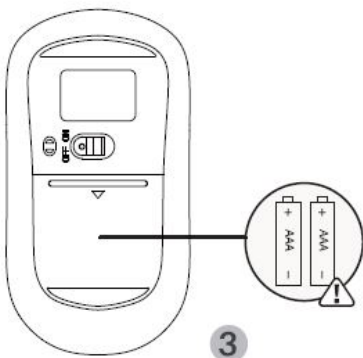
Operation Guides



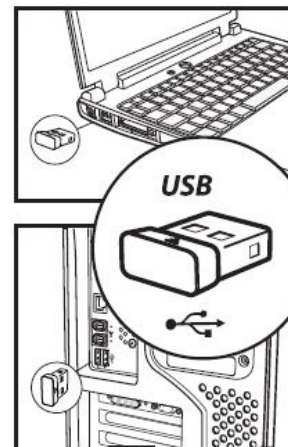
1



2



3



4

...

1. Fetch the wireless keyboard and mouse. Take out the USB receiver from the mouse battery compartment
2. Insert one 1.5V AAA battery into the keyboard according to the positive and negative sign. And turn on the power switch.
3. Insert two 1.5V AAA batteries into the mouse according to the positive and negative sign. And turn on the power switch.
4. Plug the receiver into the USB port of your computer.
5. When the computer installs driver automatically, they start to serve.

Functions of Combination Keys

- **FN+F1 audio on** FN+F7=play/ pause
- **FN+F2= Volume down** FN+F8 stop
- **FN+F3=volume up** FN+F9=homepage
- **FN+F4-mute** FN+F10 email
- **FN+F6=** previous track
- **FN+F11-my computer** FN+F6= next track

Features

1. The mouse and keyboard share a common receiver. And the receiver is in the battery compartment at the bottom of the mouse.
2. Adjustable mouse DPI levels: 800-1200-1600 (default setting is 1200).
3. It has automatic Sleep mode and Wake up mode. When the mouse hasn't been used for 10 min, it will enter sleep mode.
4. Press any button to wake up the mouse. If it will be unused for a long time, turn off the power switch to save power. Compatibilities: Windows XP /VSTA/ 7/8/ 10; Mac (Functions of combination keys are not available).

Solution to Connection Failures

Keyboard

1. Take out the battery from the keyboard and receiver from the computer.
2. Reinstall battery into the keyboard. And plug the receiver into the USB port of the computer.
3. Turn on the power switch of the keyboard, which should be within 20cm away from the receiver. Press and hold "ESC" and "K" keys together to pair again.

Mouse

1. Take out the battery from the mouse and the receiver from the computer.
2. Reinstall battery into the mouse. And plug the receiver into the USB port of the computer
3. Turn on the power switch of the mouse, which should be within 20cm away from the receiver. Press and hold the Right button and Scroll button together to pair again.

Note:

If the above solution doesn't help, repeat the above procedures to pair again. If it still can't work, contact our service team to work for you.

FCC Warning

This device complies with Part 15 of the FCC Rules. Operation is subject to the following two conditions:


1. This device may not cause harmful interference, and
2. this device must accept any interference received, including interference that may cause undesired operation.

NOTE 1: This equipment has been tested and found to comply with the limits for a Class B digital device, pursuant to part 15 of the FCC Rules. These limits are designed to provide reasonable protection against harmful interference in a residential installation. This equipment generates, uses and can radiate radio frequency energy and, if not installed and used in accordance with the instructions, may cause harmful interference to radio communications. However, there is no guarantee that interference will not occur in a particular installation. If this equipment does cause harmful interference to radio or television reception, which can be determined by turning the equipment off and on, the user is encouraged to try to correct the interference by one or more of the following measures:

- Reorient or relocate the receiving antenna.
- Increase the separation between the equipment and receiver.
- Connect the equipment into an outlet on a circuit different from that to which the receiver is connected.
- Consult the dealer or an experienced radio/TV technician for help.

NOTE 2: Any changes or modifications to this unit not expressly approved by the party responsible for compliance could void the user’s authority to operate the equipment.
The device has been evaluated to meet general RF exposure requirement.

Documents / Resources

| | |
|--|--|
|  | Dixon CS-7200G Wireless Multimedia Keyboard & Mouse [pdf] User Manual PC230A-3, PC230A3, 2A3JH-PC230A-3, 2A3JHPC230A3, CS-7200G, Wireless Multimedia Keyboard Mouse, Multimedia Keyboard Mouse, Wireless Keyboard Mouse, Keyboard Mouse |
|--|--|