



## Contents [ [hide](#) ]

- [1 Divit HT3 Extendable Stool Bench](#)
- [2 Product Specifications](#)
- [3 Product Usage Instructions](#)
- [4 FAQs](#)
- [5 Documents / Resources](#)
  - [5.1 References](#)

# DIVIT<sup>®</sup>

## Divit HT3 Extendable Stool Bench



## Product Specifications

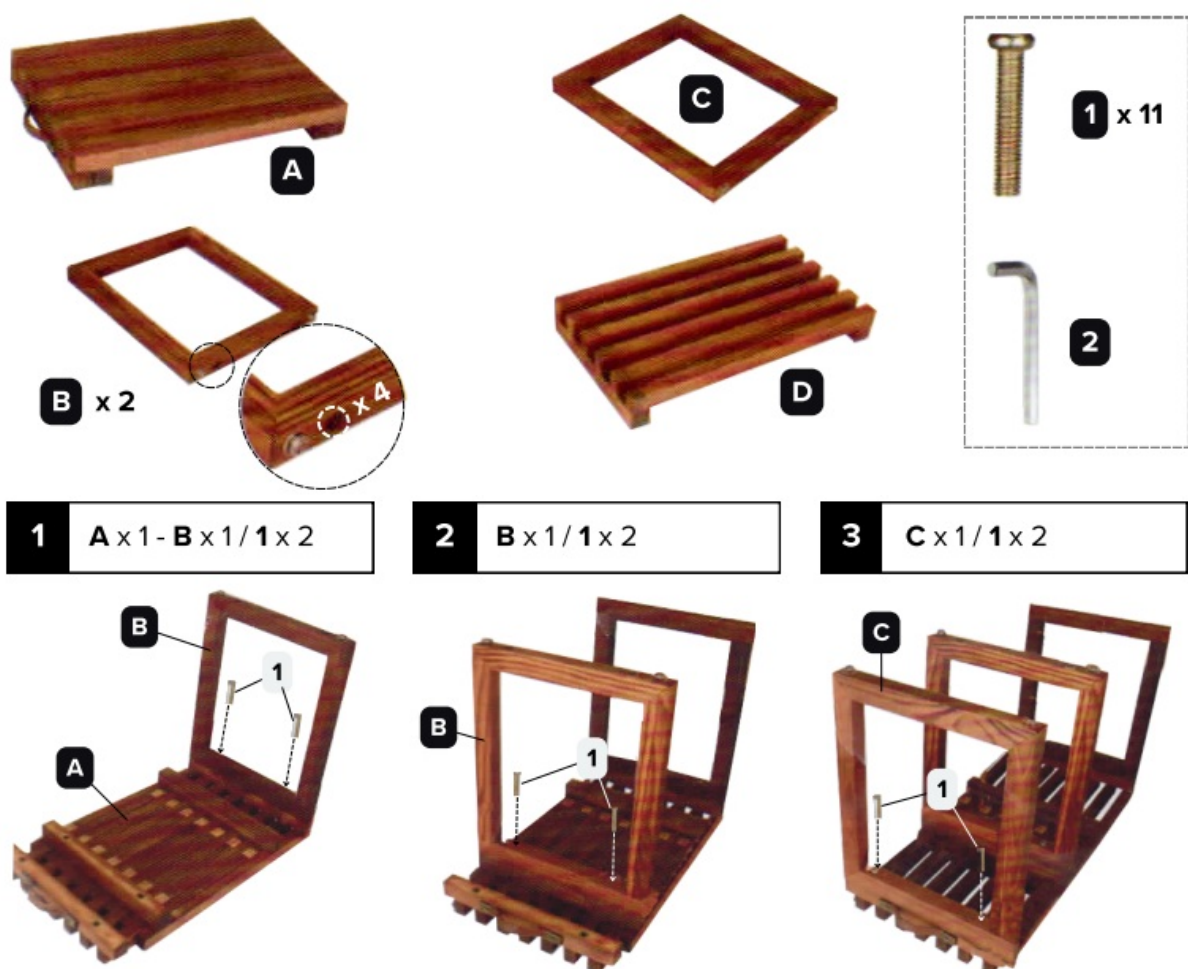
- Model: EU
- Scope of Delivery:
  - A x 1

- B x 2
- C x 4
- D x 2
- Short Version: 1
- Long Version: 1
- Manufacturer: 58540 Meinerzhagen
- Website: [motea.com/contact](http://motea.com/contact)
- Valid Until: 06/2025

## Product Usage Instructions

### Mounting Instructions:

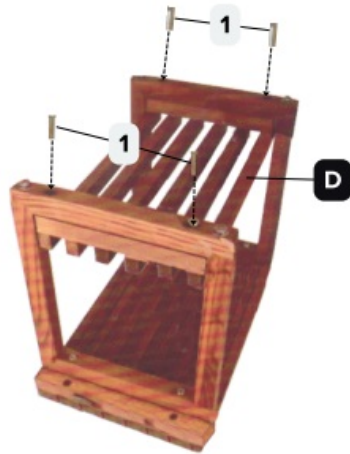
1. Mount A x 1 and B x 1 / 1 x 2 together.
2. Proceed to mount B x 1 / 1 x 2.
3. Next, mount C x 1 / 1 x 2.
4. Finally, mount D x 1 / 1 x 4.



4 D x 1 / 1 x 4

✓ Short version

✓ Long version



## FAQs

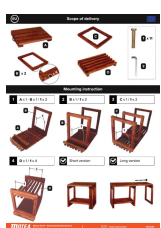
Q: What should I do if a component is missing from the scope of delivery?

A: In case any component is missing, please contact our customer support immediately with your order details for further assistance.

Q: Is there a warranty for this product?

A: Yes, this product comes with a standard warranty. Please refer to the warranty terms and conditions provided with the product for more information.

## Documents / Resources



[Divit HT3 Divit HT3 Extensible Stool Bench \[pdf\]](#) Instructions

HT3, DPL4, HT3 Divit HT3 Extensible Stool Bench, HT3, Divit HT3 Extensible Stool Bench, Extensible Stool Bench, Stool Bench, Bench

## References

- [User Manual](#)

---

## Leave a comment

Your email address will not be published. Required fields are marked \*

Comment \*

Name

Email

Website

☐ Save my name, email, and website in this browser for the next time I comment.

**Post Comment**

**Search:**

e.g. whirlpool wrf535swhz

**Search**

[Manuals+](#) | [Upload](#) | [Deep Search](#) | [Privacy Policy](#) | [@manuals.plus](#) | [YouTube](#)

This website is an independent publication and is neither affiliated with nor endorsed by any of the trademark owners. The "Bluetooth®" word mark and logos are registered trademarks owned by Bluetooth SIG, Inc. The "Wi-Fi®" word mark and logos are registered trademarks owned by the Wi-Fi Alliance. Any use of these marks on this website does not imply any affiliation with or endorsement.