



# DisplayLink Docking Station with 150W Power Adapter Instruction Manual

[Home](#) » [DisplayLink](#) » DisplayLink Docking Station with 150W Power Adapter Instruction Manual 

## DisplayLink Docking Station with 150W Power Adapter Instruction Manual



### Contents

- [1 How to install Display link driver](#)
- [2 Documents / Resources](#)
  - [2.1 References](#)

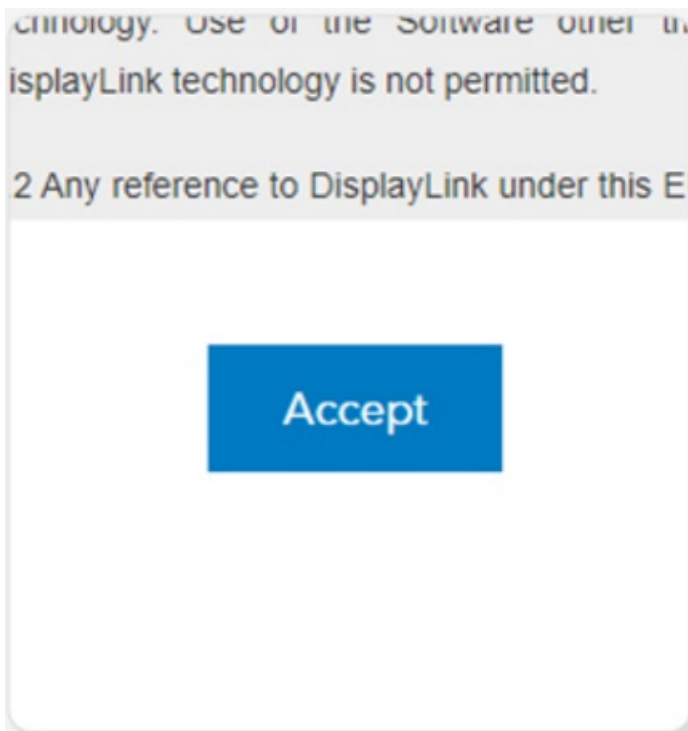
## How to install Display link driver

For Windows!

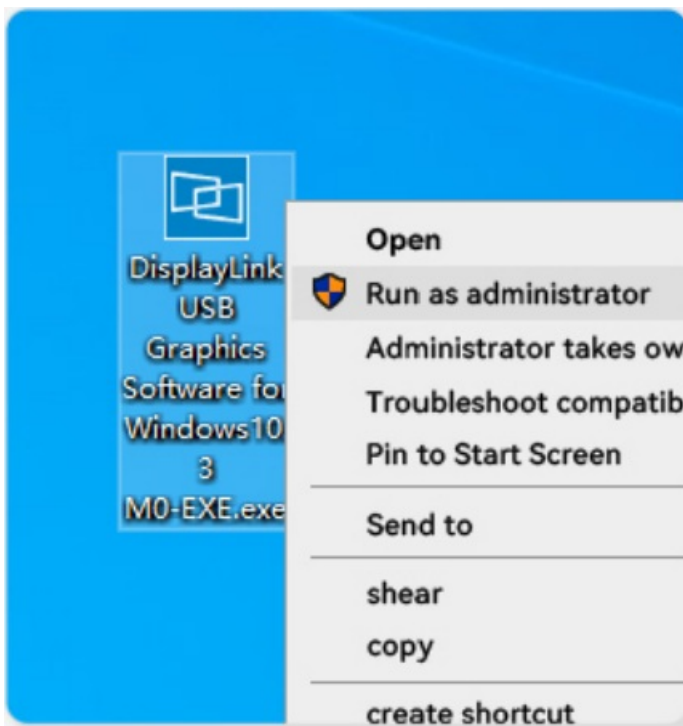
1. Go to the webpage and click on the DOWNLOADS page in the upper right corner. Select Windows and click Download to download.



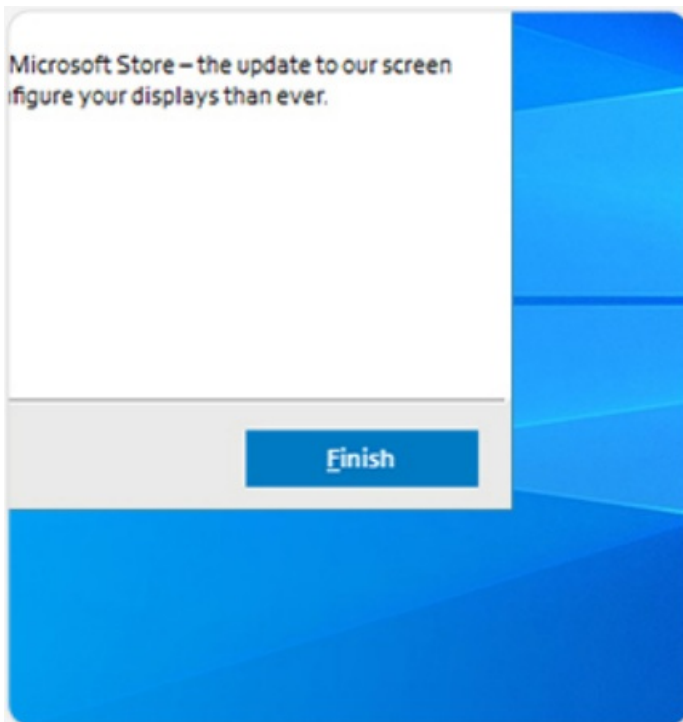
2. Select Accept.



3. Select the downloaded file, select it with the right mouse button and click Run as administrator, wait for the system compatibility to pass, then click Install



4. After installation, click Finish to use it.

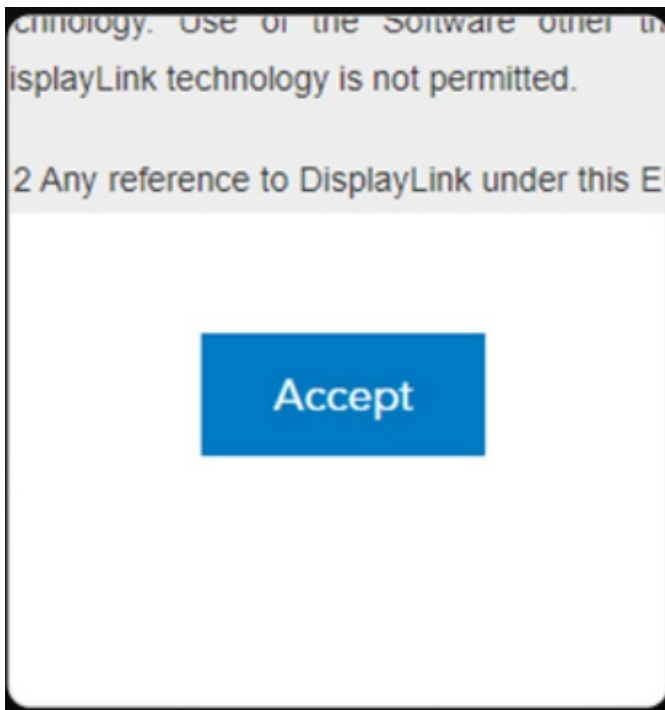


#### For Mac OS:

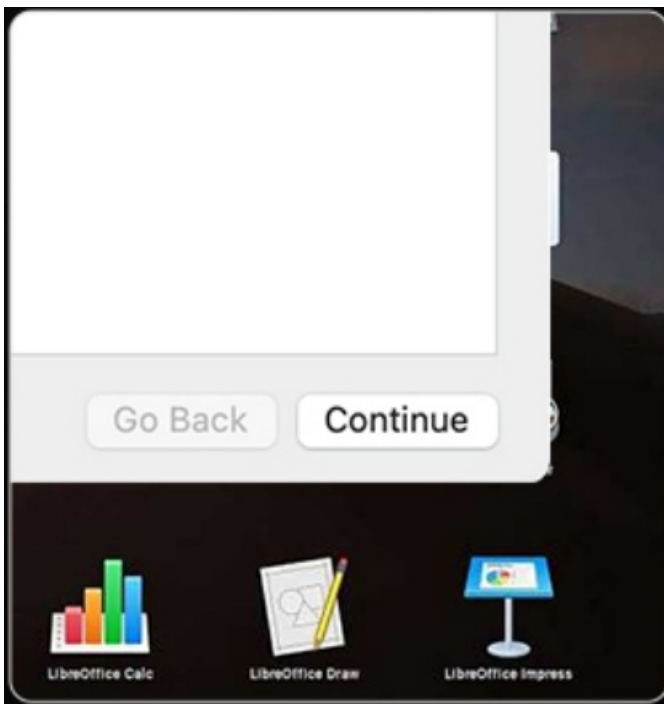
1. Go to the webpage and click on the DOWNLOADS page in the upper right corner. Select MacOS and click Download



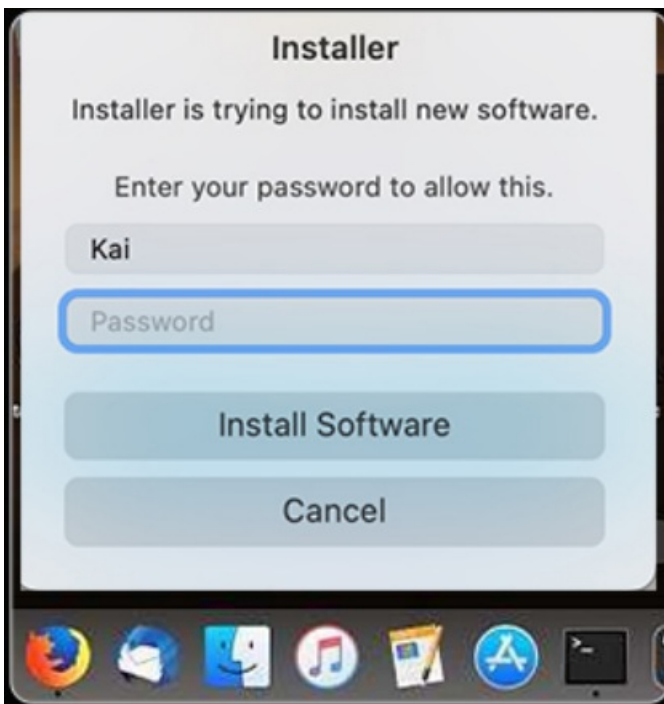
2. Select Accept



3. Open the downloaded file and click Continue.



4. Enter the lock screen password and click Install to use the program.





[DisplayLink Docking Station with 150W Power Adapter](#) [pdf] Instruction Manual  
Docking Station with 150W Power Adapter, Docking, Station with 150W Power Adapter, 150W  
Power Adapter, Power Adapter

## References

- [User Manual](#)