



DISNEY Mickey Mouse Ultrasonic Diffuser with Bluetooth Speaker User Guide

[Home](#) » [DiSNEY](#) » DISNEY Mickey Mouse Ultrasonic Diffuser with Bluetooth Speaker User Guide

Contents

- [1 DISNEY Mickey Mouse Ultrasonic Diffuser with Bluetooth Speaker](#)
- [2 Before You Begin](#)
- [3 In the Box](#)
- [4 Using the Diffuser](#)
- [5 Pairing the Speaker](#)
- [6 Storing the Diffuser](#)
- [7 FCC](#)
- [8 Warranty Information](#)
- [9 Documents / Resources](#)
- [10 Related Posts](#)



DISNEY Mickey Mouse Ultrasonic Diffuser with Bluetooth Speaker



Before You Begin

ADULT SUPERVISION REQUIRED! PLEASE ASK YOUR PARENT OR GUARDIAN TO HELP YOU SET IT UP AND USE. READ CAREFULLY AND SAVE THIS MANUAL NOT INTENDED FOR MEDICAL USE. Consult your doctor before use if you have any concerns about your health.

THIS IS NOT A TOY, KEEP AWAY FROM CHILDREN AND PETS

- Do not expose the unit to extreme temperatures (heat or cold). open flames, humid conditions, or wet conditions.
- Do not submerge in water.
- Do not open this product or attempt to repair the unit yourself should it not be working.
- The amount and intensity of aroma produced will vary. Factors that affect production of aroma can include humidity, temperature, and/or air current.
- Only 100% natural essential oil should be used with this product Oil containing chemical fragrance, spice, or other impurities, may cause malfunctions. Only use 1-2 drops of essential oil. ONLY use a 5V (minimum 1A) USB adapter with the supplied USB power cable. It must be exactly 5V, otherwise the device may be damaged.
- When not in use, the diffuser should be stored in a dry, cool location, away from sources of water or heat.
- It is recommended that the diffuser be covered to protect it from exposure to dust if it will not be in use for a long period of time.

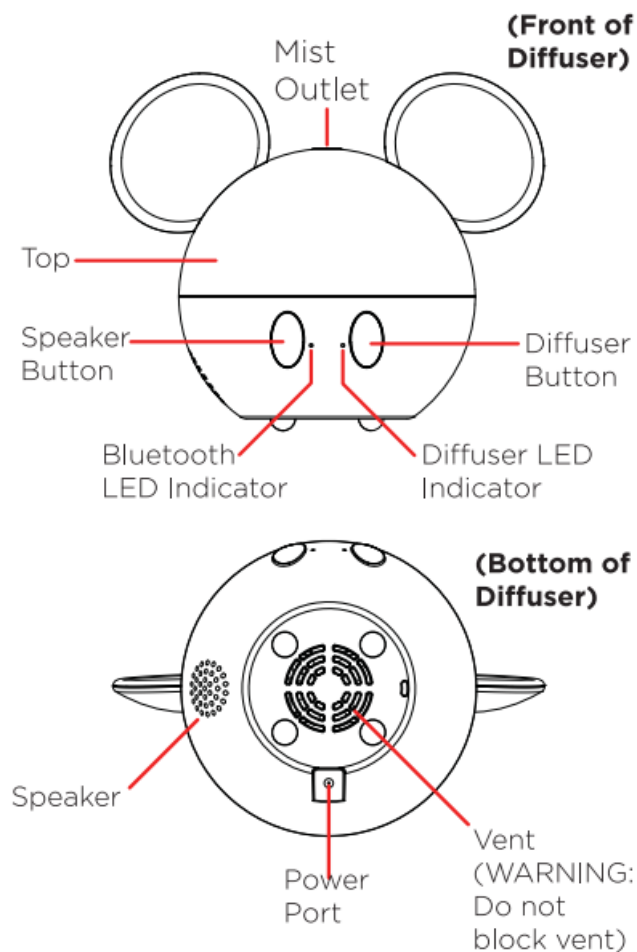
Precautions & Warnings

1. Always unplug the power adapter before maintenance.
2. Essential oils can stain, in the event of a spill or leakage, please wipe away any water or oil with a soft cloth.
3. Do not let aroma blow directly onto furniture, clothing, art, or any valuable objects.

4. Keep away from direct sunlight, heat sources, air conditioners, or fans.
5. Always keep on a stable, flat surface. Do NOT place on a carpet, bed, Cushion or other non-flat, non-stable surface.
6. Keep away from electronic equipment.
7. Do not use for more than 2 hours at a time.
8. Never move the product while in use.
9. Do not touch any part of the product with wet hands.
10. Keep out of reach of children and pets. Children should not be left unsupervised near this product. This unit is not to be used by children or any person(s) with reduced physical, sensory, or mental capabilities, or lack of experience and knowledge unless they have been given express supervision and instruction.
11. Keep the power cable clear of pathways, and do not forcefully pull or remove from the unit.
12. If smoke or burning smell is detected, immediately unplug the unit.

In the Box

- **XO-9958** Diffuser Speaker (x1)
- **USB Power** Cable (x1)
- **Instruction Manual** (x1)

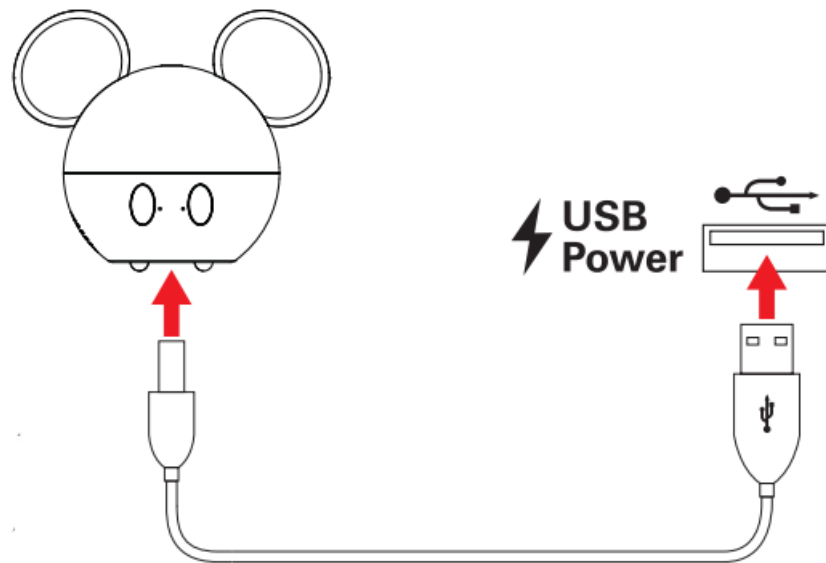


Connecting to Power

1. Plug the smaller pin of the supplied power cable into the power port on the bottom of the diffuser.
2. Plug the other end into a USB power source, such as the USB port on a computer or a 5V USB wall adapter

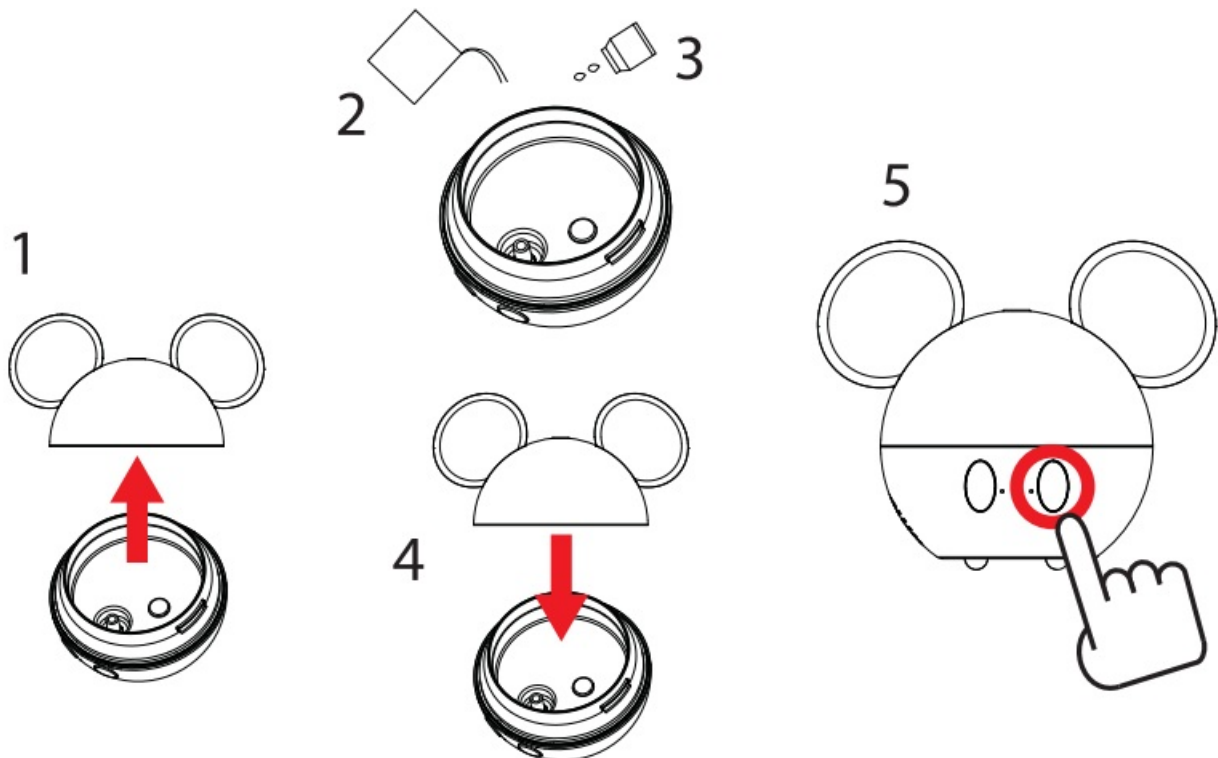
(not includea).

The Bluetooth LED indicator will light up RED while charging and turn OFF when fully charged. On lowv power, a tone will be heard indicating the speaker needs t be recharged.



Setup

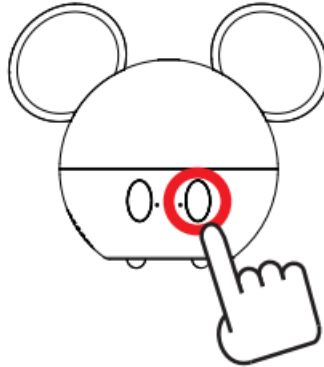
1. Remove the top from the diffuser.
2. Fill the tank with room temperature mineral water or tap water up to the MAX level line.
3. Add 2 – 3 drops (-0.1- 0.15 mL) of essential oil.
4. Replace the top. Set the diffuser on a flat, sturdy surface.
5. Press the Diffuser button on the front of the diffuser to turn ON.



Using the Diffuser

Connect to power and set up.

1. Press the Diffuser button to turn the diffusion ON in continuous diffusion mode. The diffuser will diffuse Continuously for 2 hours and turn off automatically. The diffuser LED indicator will turn solid BLUE.
2. Press the Diffuser button a 2nd time to enter intermittent diffusion mode. The diffuser will diffuse for 1 minute every 6 minutes. The diffuser LED indicator will turn solid GREEN. It will diffuse intermittently for 8 hours, and then turn OFF automatically.
3. Press the Diffuser button a 3rd time to power diffusion OFF



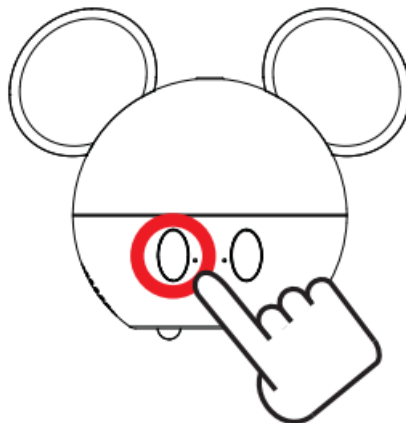
If the water tank is empty, the diffuser LED indicator will flash BLUE & GREEN, and the diffuser will power OFF automatically.

Note: The diffuser speaker must be connected to power in order to use diffusion. The built-in battery can be used for speaker function only.

Powering the Speaker

To power, or charge or power the speaker, keep connected fully before using if you would like to use the speaker Wirelessly.

Powering the Speaker ON/OFF



- Press+hold the Speaker button to power the speaker ON/OFF.
- When powered on, the speaker will enter Bluetooth pairing mode, and may automatically re-pair to a previously-paired device.

Pairing the Speaker

1. Connect to power or charge the battery fully. Power the speaker ON. A tone will be heard and the speaker will enter Bluetooth pairing mode. The Bluetooth LED indicator will quickly flash BLUE.
2. Set your smart device to search for Bluetooth devices. When it appears, select MKDIF101 from the list of found

devices.

3. After a successful pairing, a tone will be heard, and the Bluetooth LED indicator will turn solid BLUE. YOU should be able to play music on the speaker.

When paired via Bluetooth®, volume and playback can be adjusted with the controls on your paired device, or with the diffuser speaker controls listed below,

- Press the Speaker button to pause and resume audio play back.

Storing the Diffuser

When not using the diffuser for a long period of time, it is recommended to empty all water out of the tank, and dry out

With a tissue.

The diffuser is best stored in an airtight box or bag (not included) away from heat, sunshine and moisture.

Storing the Diffuser

- When not using the diffuser for a long period of time, it is recommended to empty all water out of the tank, and dry out With a tissue.
- The diffuser is best stored in an airtight box or bag (not included) away from heat, Sunshine and moisture.
- This device contains licence-exempt transmitter(s)/receiver(s) that comply with Innovation, Science and Economic Development Canada's licence-exempt RSS(s).

Operation is subject to the following two conditions:

1. This device may not cause interference.
2. This device must accept any interference, including interference that may cause undesired operation of the device.

FCC

Caution: Changes or modifications not expressly approved by the party responsible for compliance could void the user's authority to operate the equipment.

Note: This equipment has been tested and found to comply with the limits for a Class B digital device, pursuant to part 15 of the FCC Rules. These limits are designed to provide reasonable protection against harmful interference in a residential installation. This equipment generates, uses and can radiate radio frequency energy and, if not installed and used in accordance with the instructions, may cause harmful interference to radio communications. However, there is no guarantee that interference will not occur in a particular installation. If this equipment does cause harmful interference to radio or television reception, which can be determined by turning the equipment off and on, the user is encouraged to try to correct the interference by one or more of the following measures:

- Reorient or relocate the receiving antenna.
- Increase the separation between the equipment and receiver
- Connect the equipment into an outlet on a circuit different from that to which the receiver is connected,
- Consult the dealer or an experienced radio/TV technician for help.

This product complies with the requirements for Part 18 of the FCC Rules. Although this product complies with FCC, it may interfere with other devices. If this product is found to interfere with another device, separate the other device and this product.

This device complies with Part 15 of the FCC Rules, Operation is subject to the following two conditions: (1) This device may not cause harmful interference, and (2) this device must accept any interference received, including interference that may cause undesired operation.

Radiation Exposure Information

This device has been evaluated to meet general RF exposure requirements. The device can be used in portable exposure conditions without restriction.

WARNING Li-ion Battery Inside This product is fitted with a Li-ion battery. Do not damage, open, or dismantle the battery and do not use it in damp and/or corrosive conditions. Use only with compatible chargers. Never dispose of batteries in a fire, and never expose them to high temperatures. Do not expose the product to temperatures exceeding 60°C (140°F).

Rating Label Definitions.



- Direct current symbol



- This symbol signifies that the product must not be discarded as household waste, and should be delivered to an appropriate collection facility for recycling. Proper disposal and recycling helps protect natural resources, human health and the environment.



- This symbol signifies and declares that this equipment complies with battery charging which complies with California CEC and energy efficiency.



- This symbol signifies that this is a wireless device powered by Bluetooth® technology. The Bluetooth® word mark and logos are registered trademarks owned by the Bluetooth SIG, Inc. and any use of such marks by Southern Telecom is under license.



- This symbol represents FCC Declaration of Conformity and compliance.

Warranty Information

90-Day Limited Warranty

Territory: United States

LIMITED WARRANTY To ORIGINAL CONSUMER

This product as supplied and distributed new by an authorized retailer is warranted by GMD Wholesale Inc. to the original consumer purchaser against defects in materials and workmanship ("Warranty") as follows:

To obtain warranty service:

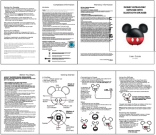
Please contact us at: customersupport@gmdwholesale.com Exchanges require dated proof of purchase from an authorized retailer Your product will be repaired or replaced, at our option, for the same or similar model of equal value if examination by the service center determines this product is defective. Products received damaged as a result of shipping will require you to file a claim with the carrier

Warranty service not provided

This warranty does not cover damage resulting from accident, misuse, abuse, improper installation or operation, lack of reasonable care, unauthorized modification including software modifications such as the installation of custom firmware. This warranty is voided in the event any unauthorized person opens, alters or repairs this product. All products being returned to the authorized service center for repair must be suitably packaged. NO WARRANTIES, WHETHER EXPRESS OR IMPLIED, INCLUDING, BUT NOT LIMITED TO, ANY IMPLIED WARRANTIES OF MERCHANTABILITY OR FITNESS FOR A PARTICULAR PURPOSE OTHER THAN THOSE EXPRESSLY DESCRIBED ABOVE SHALL APPLY. DISTRIBUTOR FURTHER DISCLAIMS ALL WARRANTIES AFTER THE EXPRESS WARRANTY PERIOD STATED ABOVE. NO OTHER EXPRESS WARRANTY OR GUARANTEE GIVEN BY ANY PERSON, FRM OR ENTITY WITH RESPECT TO THE PRODUCT SHALL BE BINDING ON THE DISTRIBUTOR. REPAIR, REPLACEMENT, OR REFUND OF THE ORIGINAL PURCHASE PRICE AT THE DISTRIBUTOR’S SOLE DISCRETION ARE THE EXCLUSIVE REMEDIES OF THE CONSUMER. IN NO EVENT WILL DISTRIBUTOR OR ITS MANUFACTURERS BE LIABLE FOR ANY INCIDENTAL, DIRECT, INDIRECT, SPECIAL, PUNITIVE OR CONSEQUENTIAL DAMAGES (SUCH AS, BUT NOT LIMITED TO, DAMAGES FOR LOSS OF PROFITS, BUSINESS, SAVINGS. DATA OR RECORDS) CAUSED BY THE USE, MISUSE OR INABILITY TO USE THE PRODUCT. EXCEPT AS STATED HEREIN, NO OTHER WARRANTIES SHALL APPLY. NOTWITHSTANDING THE FOREGOING, cONSUMER’S RECOVERY AGANST DISTRIBUTOR SHALL NOT EXCEED THE PURCHASE PRICE OF THE PRODUCT SOLD BY DISTRIBUTOR. THIS WARRANTY SHALL NOT EXTEND TO ANYONE OTHER THAN THE ORIGINAL CONSUMER WHO PURCHASED THE PRODUCT AND IS NOT TRANSFERABLE.

Some countries, states or provinces do not allow the exclusion or limitation of incidental or consequential damages or allow limitations on warranties, so limitations or exclusions may not apply to you. This warranty gives you specific legal rights, and you may have other rights that vary from state to state or province to province. Contact your authorized retailer to determine if another warranty applies.

Documents / Resources

	<p>DISNEY Mickey Mouse Ultrasonic Diffuser with Bluetooth Speaker [pdf] User Guide 9958, 2ADK39958, Mickey Mouse Ultrasonic Diffuser with Bluetooth Speaker, Mickey Mouse Di ffuser with Bluetooth Speaker, Ultrasonic Diffuser with Bluetooth Speaker, Diffuser with Bluetoot h Speaker, Ultrasonic Diffuser, Diffuser with Speaker, XO-9958</p>
---	---