



Discover Technology 2A4WU-F1 Low Energy Consuming Mini Wi-Fi Camera Instruction Manual

[Home](#) » [Discover Technology](#) » Discover Technology 2A4WU-F1 Low Energy Consuming Mini Wi-Fi Camera Instruction Manual 

Contents

- [1 Discover Technology 2A4WU-F1 Low Energy Consuming Mini Wi-Fi Camera](#)
- [2 Features](#)
- [3 Interface description](#)
- [4 Interface use](#)
- [5 Start to use](#)
- [6 APP installation](#)
- [7 Hotspot setting Auto Mode](#)
- [8 Hotspot setting\(Manual Mode\)](#)
- [9 WiFi setting](#)
- [10 APP interface](#)
- [11 Function setting](#)
- [12 Specifications](#)
- [13 Package](#)
- [14 After-sales Service](#)
- [15 Flexible Installation](#)
- [16 FCC STATEMENT](#)
- [17 Documents / Resources](#)
- [18 Related Posts](#)



Discover Technology 2A4WU-F1 Low Energy Consuming Mini Wi-Fi Camera



Features

- The camera can be used while charging.
- Support Hotspot, WiFi and 4G mobile network to view.
- Built-in 850mA lithium battery.
- Continuous recording time: 6 hours.
- Supports night vision mode, built-in infrared light.
- SD card max capacity 128Gb(Not included).
- Built-in Microphone.
- Support motion detection.
- Supports multiple users to connect and view at the same time.
- Built-in magnet, the camera can be attached on any magnetic surface easily.
- Supports IOS and Android smart phones.
- USB charging cable can be used for reading
- SD card file.

Note:

Please charging the camera for 1 to 3 hours before your first using.

Interface description



Interface use

- **Turn ON:**
Hold the ON/OFF button for 2 seconds until the red and blue lights flash together. Wait until the blue light bright and the camera hotspot powers on.
- **Turn OFF:**
Hold the ON/OFF button for 5 seconds until the red and blue lights flashes turn off together. the device will power off.

Force Shutdown:

Press the small hole between ON/OFF and RESET using a thin object.

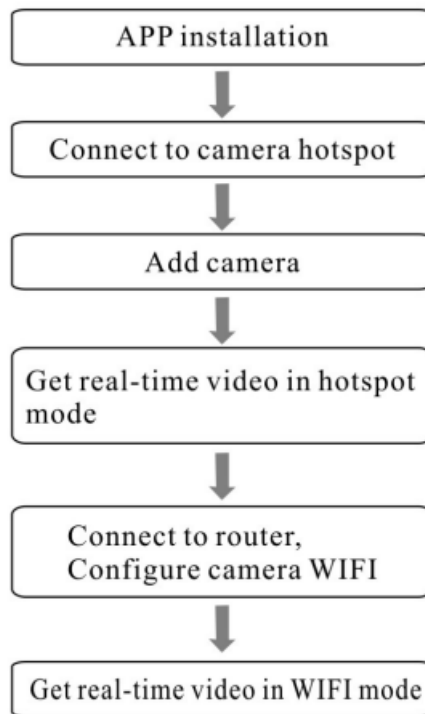
Reset to factory setting:

Hold the RESET button for 2 seconds wait until the red and blue lights flashes turn off, the camera will power off.

Note:

During the connection process, please observe the color and status of the indicator light (The above is the indicator color display without SD card).

Start to use



APP installation

IOS: Search “Video0” in App Store. **Android:** Search “Video0” in the Android market. You can also scan the below QR code to install.



IOS



Android



Video0

Note:

Camera App Video0, the last Digit is Zero-0, not letter-o, please note this when download the camera App.

Note:

In order to ensure the normal use of app functions, please agree to the relevant authorization. There are two ways to add a camera, auto mode and manual mode.

Auto Mode:

When the phone WIFI selects the camera ID, the APP will automatically detect and add the camera.

Manual Mode:

Due to the mobile phone system and version, the APP cannot automatically detect and add a camera. At this time, You need to add cameras in manual mode. In order to use the camera quickly, after the hotspot mode connection is Successful, we will connect to the WIFI.

Thank you for your understanding.

Hotspot setting Auto Mode

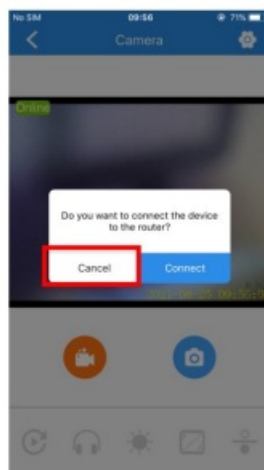
Step1: Hold the ON/OFF button for 2 seconds until the red and blue lights flash together. Wait until the blue light bright and the camera hotspot powers on.

Step2:Enter"Wi-Fi" setting, connecting hotspot in "JS-XXXXXX".



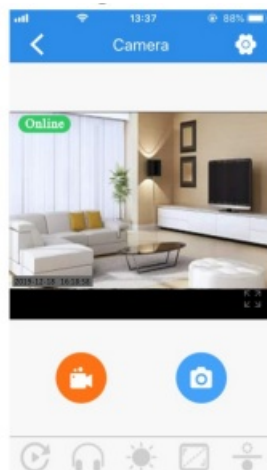
Step3: Open "Video0"

At this time, The APP will prompt whether to connect to the router. Choose "Cancel"First enter the hotspot mode to watch the video, and then connect to WIFI.



Note:
In auto mode, Need to
open the location
services of the phone.

Step4: Click "Cancel" ,Get real-time video in hotspot mode.



At this time, the hotspot mode connection is successful, and you can watch real-time video in a short distance.

Next step,

please check page 15, how to set up WiFi.

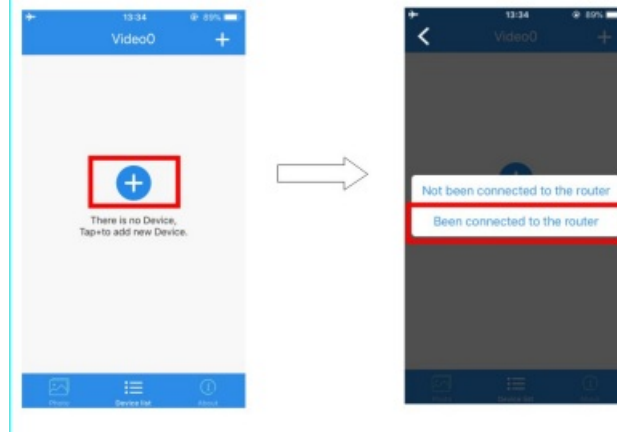
Hotspot setting(Manual Mode)

Step1:Hold the ON/OFF button for 2 seconds until the red and blue lights flash together. Wait until the blue light bright and the camera hotspot powers on.

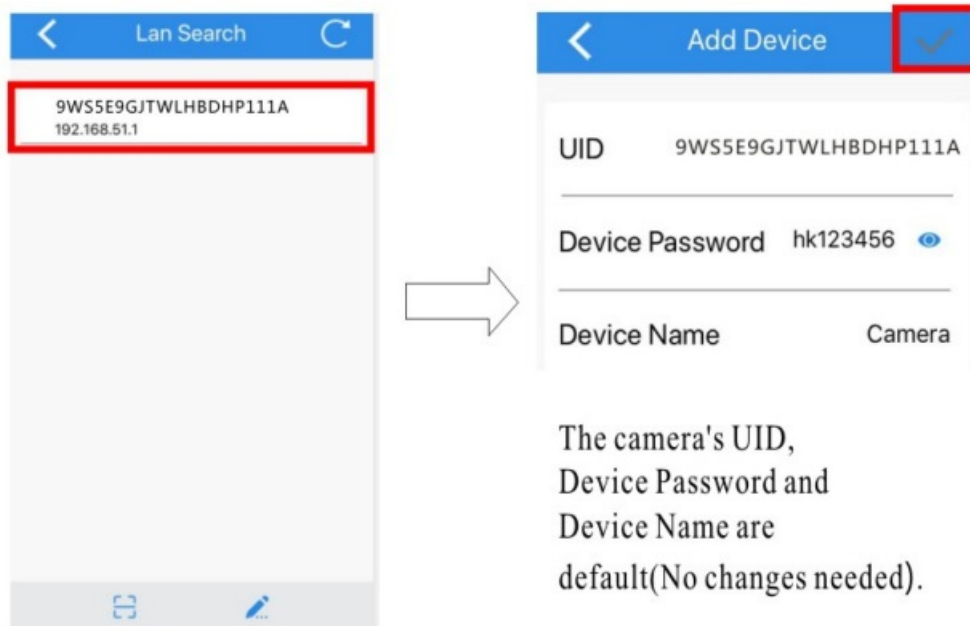
Step2:Enter"Wi-Fi" setting, connecting hotspot in "JS-XXXXXX".



Step3: Open “Video0”, click



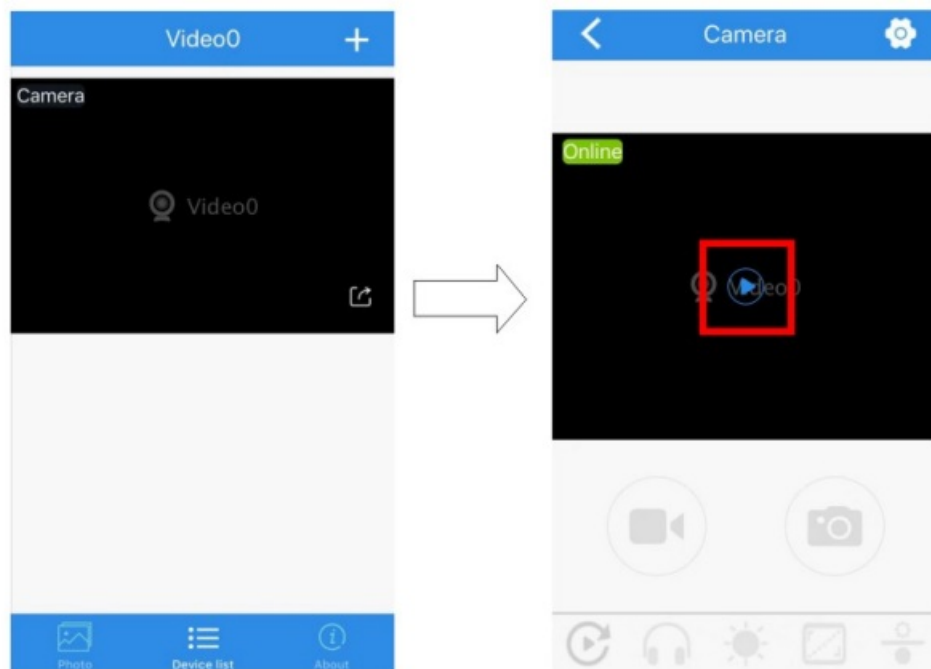
Step5:Click the information display area.



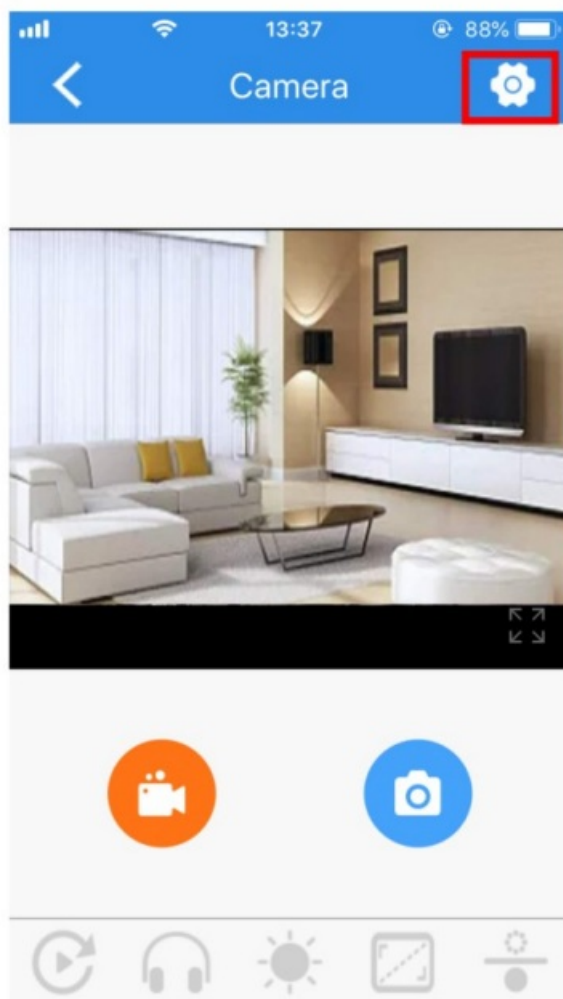
Password default:hk123456

Step6: Click camera. to save parameters, add System display: “Camera successfully added”

Step7: Click image to view



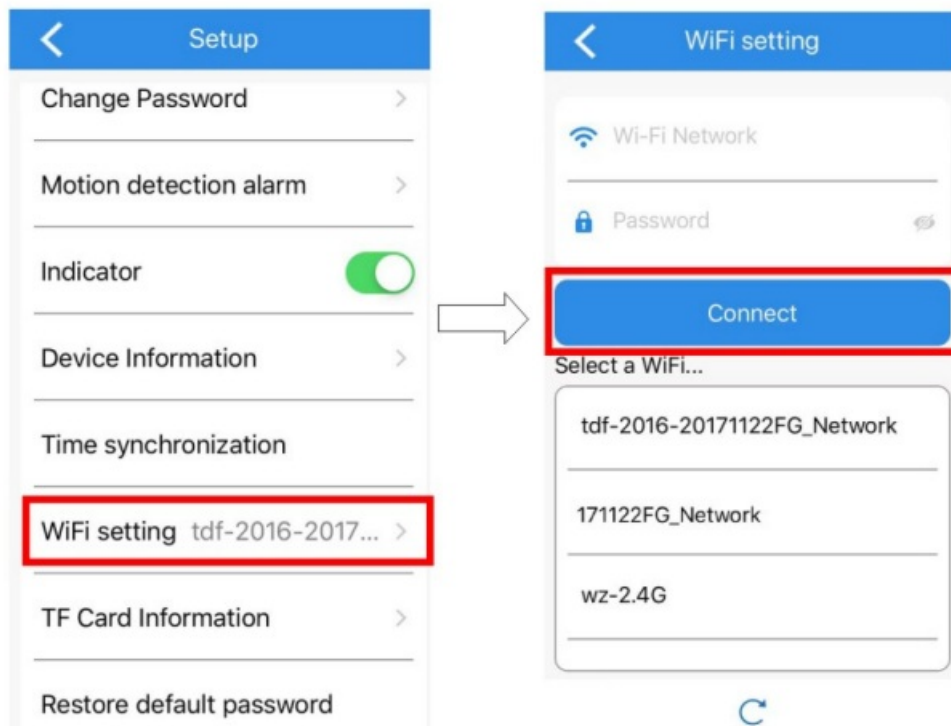
Step8: Click to enter live image viewing



WiFi setting

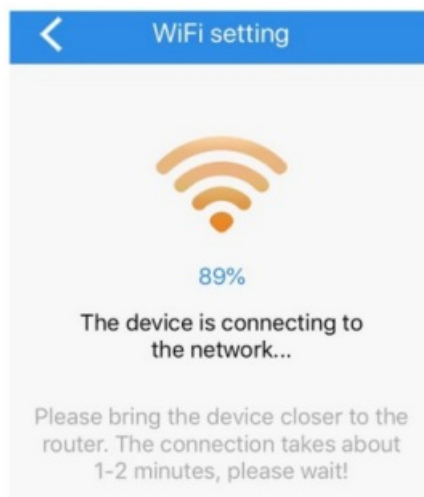
Please set the hotspot before setting up the **WiFi network**.

Step1: Click to enter WIFI setting.



Step2: Click "WiFi setting" to enter the setting.

Step3: Select the router name and password, and click "Connect", the WiFi connection will begin.

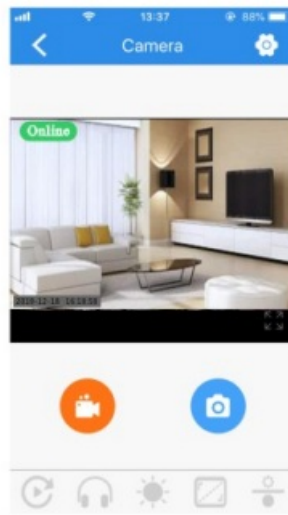


The red and blue lights flash together. wait Until the red light is on, the WiFi connection is successful(without SD card)

Note:

WiFi name cannot include spaces. Most router have 2.4G/5G dual signal options, please choose 2.4G network. The camera connect to WiFi at the first time, please close to router and mobile phone.

Step4: Touch the image viewing area to view Real-time video. WiFi mode is complete.

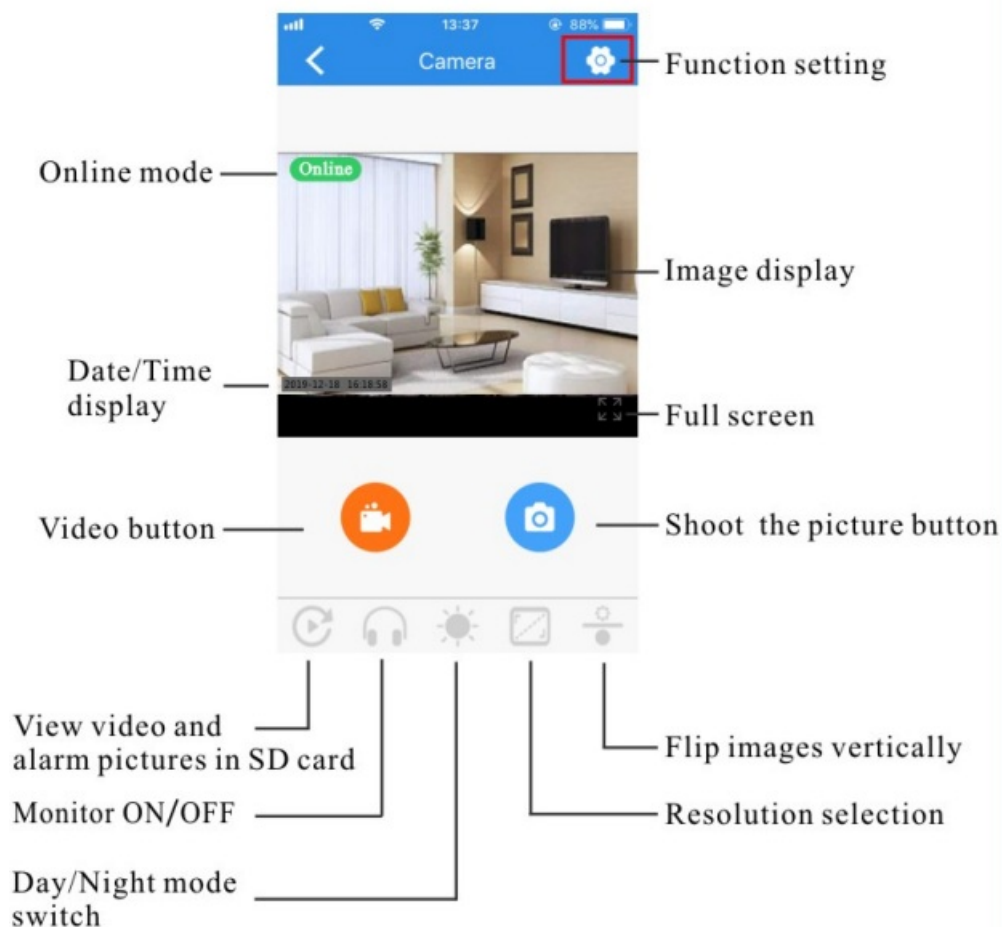


Note: If you go out or switch networks on your phone, The camera may not be online. Because the app is Disconnected from the camera, the monitor does not display Online; refresh the device or restart the APP.


If you replace the router, you need to do the following:

1. Reset the camera.
2. Connect the camera to the new WiFi.

APP interface



Function setting

Change camera password	Change Password
Detection ON/OFF	Motion detection alarm
Signal lights ON/OFF	Indicator 
Product model/version	Device Information
Sync phone date and time	Time synchronization
WiFi setting	WiFi setting tdf-2016-2017...
SD card storage	TF Card Information
Reset default password	Restore default password
Remove this device	Remove this device

Specifications

- Resolution: 1080P/720P
- Viewing angle: 120 degree
- Number of frames: 25fps
- Video format: AVI
- Picture format: JPEG
- Battery capacity: 850mA lithium battery
- Continuous recording time: 6 hours
- Charging Time:3-5hours
- Maximum SD card capacity: 128Gb
- Infrared night vision distance:18ft
- Microphone: Yes
- Motion detection: Yes
- Connection method: Hotspot/WiFi/4G
- Access method: Phone/Tablet PC
- Smart Phone: 10S/Android
- Voltage input: DC5V/1A
- Interface: Micro USB
- Product size:1.6 x1.6 x 0.5Inch
- Product weight: 1.1oz

Package

- 1x Mini Camera
- 1x Magnetic Bracket
- 1x User Manual
- 1x Double-sided Tape
- 1x Flexible Rigid Cable
- 1x USB Charging Cables

Note:

The USB charging Cable has a data transmission function. When the charging cable is connected to a computer, the information on the SD card can be read. Flexible rigid cable just for charging. The infrared light is turned off, battery can work for 6 hours. Please turn off the camera before inserting or removing the SD card.

Otherwise, the SD card

will be damaged. The camera does not have PC software, you can view the contents of the SD card on the computer. The camera connects to WiFi at the first time, please close to router and mobile phone. Please adjust the camera angle to avoid infrared light reflection, so as not to cause the image to become white. The accuracy of motion detection will be affected by light, angle, target size and network, etc. To ensure the stability of the camera, the Day/Night mode is manual switching. If the camera hotspot name cannot be found, please press the RESET to restart. The yellow indicator light is always on during charging. When it is off, the battery is fully charged.

After-sales Service



discover tecs



- E-mail: discovertecs@gmail.com
- Video Guide: How to setting Hotspot and WiFi
- Related operation videos can be found on
- YouTube or Anlork website.
- www.anlork.com
- Home> Support>F1-Smallest WiFi Camera

Dear customers,

To those who are really interested in our product Anlork wifi cameras, We are very grateful for your choice! We sincerely apologize but wish you all could give us the chance to help you with the problems you meet while using our cameras. It is normal to have issues with Hi-tech products, and please keep patient to ask for our help. Thank you in advance for your kindness. God will always bless those heart-kind mans. We highly recommend you to

read the manual attached in the package before setting up the camera. If you find it too small to read, you can ask for PDF document via email. Best wishes, Anlork

Flexible Installation



Application:

You can place it anywhere, it is small enough, very convenient to install and hide, such as doorways, garages, gardens, courtyards, rooms, offices, apartments, rental houses, cars, camping, etc., as well as your temporary monitoring needs because of its small size, it has a battery, which is very suitable for your needs.

FCC STATEMENT


This device complies with part 15 of the FCC Rules. Operation is subject to the following two conditions: (1) This device may not cause harmful interference, and (2) this device must accept any interference received, including interference that may cause undesired operation. Any changes or modifications not expressly approved by the party responsible for compliance could void the user's authority to operate the equipment.

Note: This equipment has been tested and found to comply with the limits for a Class B digital device, pursuant to part 15 of the FCC Rules. These limits are designed to provide reasonable protection against harmful interference in a residential installation. This equipment generates and can radiate radio frequency energy and, if not installed and used in accordance with the instructions, may cause harmful interference to radio communications. However, there is no guarantee that interference will not occur in a particular installation. If this equipment does cause harmful interference to radio or television reception, which can be determined by turning the equipment off and on, the user is encouraged to try to correct the interference by one or more of the following measures:

- Reorient or relocate the receiving antenna.
- Increase the separation between the equipment and receiver.
- Connect the equipment into an outlet on a circuit different from that to which the receiver is connected.
- Consult the dealer or an experienced radio/TV technician for help.

This equipment complies with FCC radiation exposure limits set forth for an uncontrolled environment. This equipment should be installed and operated with minimum distance 20cm between the radiator & your body.

Documents / Resources

	<p>Discover Technology 2A4WU-F1 Low Energy Consuming Mini Wi-Fi Camera [pdf] Instruction Manual</p> <p>F1, 2A4WU-F1, 2A4WUF1, 2A4WU-F1 Low Energy Consuming Mini Wi-Fi Camera, 2A4WU-F1, Low Energy Consuming Mini Wi-Fi Camera</p>
---	---

[Manuals+](#).