



# disave Backflush Shot Timer Instructions

[Home](#) » [disave](#) » disave Backflush Shot Timer Instructions 

### Contents

- 1 [disave Backflush Shot Timer](#)
- 2 [Product Usage Instructions](#)
- 3 [FAQ](#)
- 4 [Documents / Resources](#)
  - 4.1 [References](#)



**disave Backflush Shot Timer**



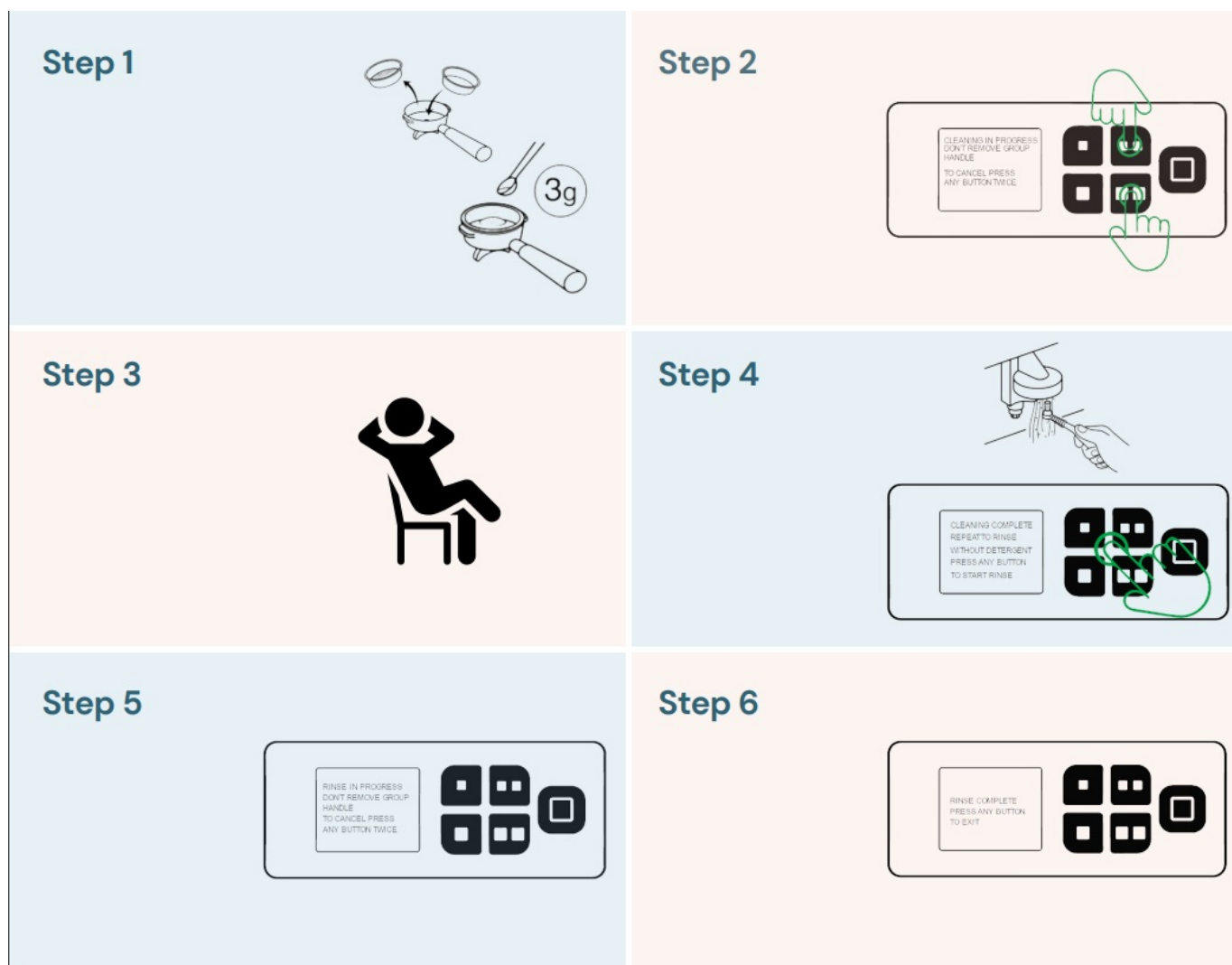
### Specifications:

- **Product Name:** Disave Shot Timers
- **Recommended Backflush Powder:** PulyCaff
- **Usage:** Back flush with powder at least once per week, up to daily for higher usage
- **Contact for PulyCaff:** 03 9702 7733 or [parts@espressobits.com.au](mailto:parts@espressobits.com.au)

### Product Usage Instructions

#### Back Flushing Using the Disave Shot Timers:

1. Insert blind basket into porta-filter handle. Dose 3g to 5g of backflush powder into blind basket and insert into the group head to clean. Back flush with powder should be performed at least once per week, and up to daily for higher usage.
2. Press and hold down simultaneously buttons 3+4 for more than 3 seconds. The cleaning function will start and display this message.
3. Relax, the cleaning will operate 10 times with back-flush powder to remove old coffee.
4. Once complete this message is displayed, remove handle and clean out remaining detergent and coffee grinds with a brush. Place handle into group head and press any button to begin final rinse.
5. The button lights will flash green again while the rinsing is in progress.
6. Once rinse cycle is complete, press any button to exit. Remove blind filter and install filter basket, extract and discard one espresso to prepare group



We recommend PulyCaff for backflushing Expobar/Crem equipment.

### Need more PulyCaff?

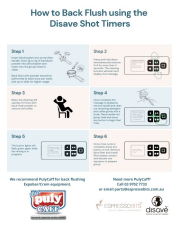
Call 03 9702 7733 or email [parts@espressobits.com.au](mailto:parts@espressobits.com.au)

### FAQ

**Q: How often should backflushing with powder be performed?**

**A:** Back flush with powder should be performed at least once per week, and up to daily for higher usage.

### Documents / Resources

	<p><a href="#">disable Backflush Shot Timer</a> [pdf] Instructions Backflush Shot Timer, Shot Timer, Timer</p>
---	--

### References

- [User Manual](#)

## **Manuals+. Privacy Policy**

This website is an independent publication and is neither affiliated with nor endorsed by any of the trademark owners. The "Bluetooth®" word mark and logos are registered trademarks owned by Bluetooth SIG, Inc. The "Wi-Fi®" word mark and logos are registered trademarks owned by the Wi-Fi Alliance. Any use of these marks on this website does not imply any affiliation with or endorsement.