



Dirt Devil UD70100 Featherlight Bugless Upright Owner's Manual

[Home](#) » [Dirt Devil](#) » Dirt Devil UD70100 Featherlight Bugless Upright Owner's Manual 

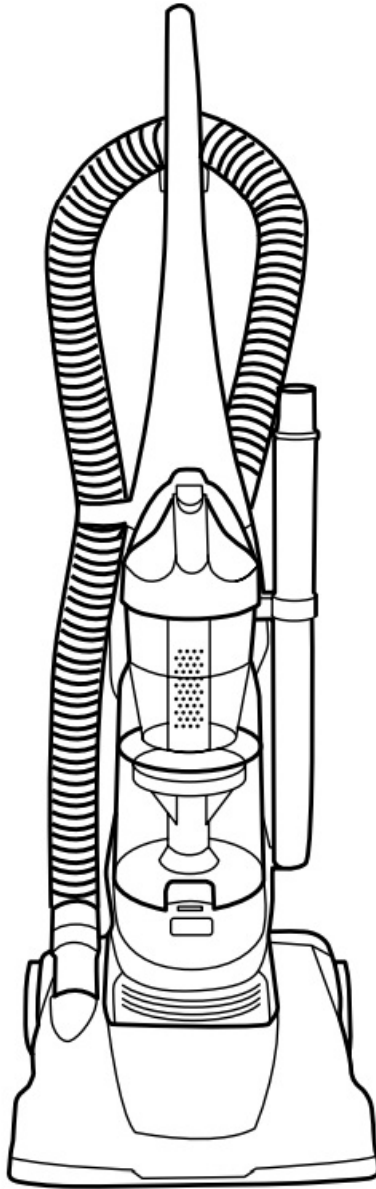


UD70100 Featherlight Bugless Upright
Owner's Manual

Contents

- [1 UD70100 Featherlight Bugless Upright](#)
- [2 LIMITED WARRANTY](#)
- [3 FEATURES](#)
- [4 HOW TO ASSEMBLE](#)
- [5 GENERAL MAINTENANCE](#)
- [6 TROUBLESHOOTING GUIDE](#)
- [7 Documents / Resources](#)
 - [7.1 References](#)

UD70100 Featherlight Bugless Upright



Operating and Servicing Instructions

Find GENUINE Replacement Parts at www.dirtdevil.com

This product uses the following parts: **BELT STYLE FILTER TYPE**

- Please read these instructions carefully before using your product.
- Let us help you put your product together, order parts and accessories or answer any questions.
- Please Do Not Return This Product To The Store.



WARNING: Product assembly may include small parts. Small parts can present a choking hazard.

Warranty Registration

Be sure to register your product online at www.DirtDevil.com or call 1-800-321-1134 to register by phone. Hint: Attach your sales receipt to this Owner's manual. Verification of date of purchase may be required for warranty service of your Dirt Devil® product.

For quick reference, please record your product information below.

Model #: _____

Mfg. Code:

(Mfg. code located on the back or bottom of product)

THIS PRODUCT IS INTENDED FOR HOUSEHOLD USE ONLY. IF USED COMMERICALLY WARRANTY IS VOID.

IMPORTANT SAFETY INSTRUCTIONS SAVE THESE INSTRUCTIONS!

When using an electrical appliance, basic precautions should always be followed, including the following:

- **IMPORTANT:** READ CAREFULLY BEFORE ASSEMBLY AND USE.
- ALWAYS FOLLOW THESE SAFETY INSTRUCTIONS.
- READ ALL INSTRUCTIONS BEFORE USING THE APPLIANCE.
- **WARNING:** THIS PRODUCT CONTAINS CHEMICALS, KNOWN TO THE STATE OF CALIFORNIA TO CAUSE CANCER AND BIRTH DEFECTS OR OTHER REPRODUCTIVE HARM. WASH HANDS AFTER USING.
- **CAUTION:** TO REDUCE THE RISK OF DAMAGE:
- TO REDUCE THE RISK OF DAMAGE: AVOID PICKING UP HARD, SHARP OBJECTS WITH THIS PRODUCT, AS THEY MAY CAUSE DAMAGE.
- TO REDUCE THE RISK OF DAMAGE: STORE IN A DRY PLACE. DO NOT EXPOSE MACHINE TO FREEZING TEMPERATURES.
- TO REDUCE THE RISK OF DAMAGE: BRUSHROLL CONTINUES TO TURN WHILE PRODUCT IS TURNED ON AND HANDLE IS IN UPRIGHT POSITION. TO AVOID DAMAGE TO CARPET, RUGS AND FLOORING, AVOID TIPPING CLEANER OR SETTING IT ON FURNITURE, FRINGED AREA RUGS, OR CARPETED STAIRS DURING TOOL USE.
- TO REDUCE THE RISK OF DAMAGE: DO NOT USE SHARP OBJECTS TO CLEAN OUT HOSE AS THEY CAN DAMAGE.
- NOT TO BE USED FOR GROOMING A PET.

WARNING: TO REDUCE THE RISK OF FIRE, ELECTRIC SHOCK OR INJURY:

- Fully assemble before operating.
- Operate cleaner only at voltage specified on data plate on back of cleaner.
- Do not leave appliance when plugged in. Unplug from outlet when not in use and before cleaning or servicing.
- Do not use outdoors or on wet surfaces.
- Do not allow to be used as a toy. Not intended for use by children age 12 and under. Close supervision is necessary when used near children. To avoid injury or damage, keep children away from product, and do not allow children to place fingers or other objects into any openings.
- Use only as described in this manual. Use only manufacturer's recommended attachments and products.
- Do not use with damaged cord or plug. If appliance is not working as it should, has been dropped, damaged, left outdoors, or dropped into water, return it to a service center prior to continuing use. Call 1-800-321-1134 for the nearest service center or visit our website at www.Dirtdevil.Com.
- Do not pull or carry by cord, use cord as handle, close a door on cord, or pull cord around sharp edges or corners. Do not run appliance over cord. Keep cord away from heated surfaces.
- Do not unplug by pulling on cord. To unplug, grasp the plug, not the cord.
- Do not handle plug or appliance with wet hands.
- Do not put any objects into openings. Do not use with any opening blocked; keep free of dust, lint, hair, and anything that may reduce air flow.
- Keep hair, loose clothing, fingers, and all parts of body away from openings and moving parts.
- Turn off all controls before unplugging.
- Use extra care when cleaning on stairs. To avoid personal injury or damage, and to prevent the cleaner from

falling, always place cleaner at bottom of stairs or on floor. Do not place cleaner on stairs or furniture, as it may result in injury or damage.

- Do not use to pick up flammable or combustible liquids, such as gasoline, or use in areas where they may be present.
- Do not pick up anything that is burning or smoking, such as cigarettes, matches, or hot ashes.
- Do not use without filters and/or dirt cup in place.
- Store the product indoors. Put the product away after use to prevent tripping accidents.
- Do not run appliance over cord.

WARNING:

To reduce the risk of electric shock, this appliance has a polarized plug (one blade is wider than the other). This plug will fit in a polarized outlet only one way. If the plug does not fit fully in the outlet, reverse the plug. If it still does not fit, contact a qualified electrician to install the proper outlet. Do not change the plug in any way. An internal thermal protector has been designed into your cleaner to protect it from overheating. When the thermal protector activates the cleaner will stop running. If this happens proceed as follows:

1. Turn cleaner OFF and disconnect it from the electrical outlet.
2. Empty dirt cup.
3. Inspect the nozzle and bag inlet openings for any obstructions. Clear obstructions if present.
4. When cleaner is unplugged and motor cools for 30 minutes, the thermal protector will deactivate and cleaning may continue.

If the thermal protector continues to activate after following the above steps, your cleaner may need servicing.

CONGRATULATIONS

You are now the proud owner of the Dirt Devil®. We trust your new purchase will bring you many years of satisfaction.

Our company has designed and developed this product with you in mind.

We are very proud of our products and hope that you are equally satisfied with their quality and performance.

Thank you for your support of Dirt Devil® products.

Visit our website at www.dirtdevil.com

LIMITED WARRANTY

To the consumer, Royal Appliance Mfg. Co. warrants this product to be free of defects in material or workmanship commencing upon the date of the original purchase. Refer to the data plate label on your product for the length of warranty and save your original sales receipt to validate start of warranty period.

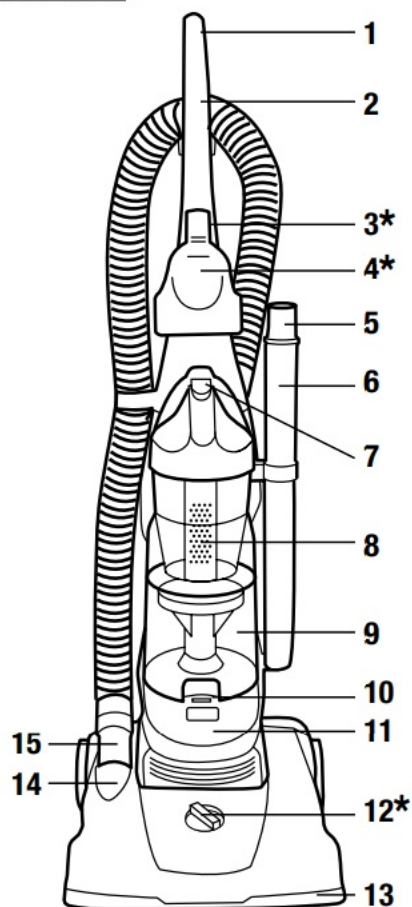
If the product should become defective within the warranty period, we will repair or replace any defective parts free of charge. The complete machine must be delivered prepaid to any ROYAL® Authorized Sales & Warranty Service Station. Please include complete description of the problem, day of purchase, copy of original sales receipt and your name, address and telephone number. If you are not near a Warranty Station, call the factory for assistance at USA & Canada: 1-800-321-1134. Use only genuine Royal® replacement parts.

The warranty does not include unusual wear, damage resulting from accident or unreasonable use of the product. This warranty does not cover accessories or attachments. This warranty does not cover unauthorized repairs. This warranty gives you specific legal rights and you may also have other rights (Other rights may vary from state to state in the USA).

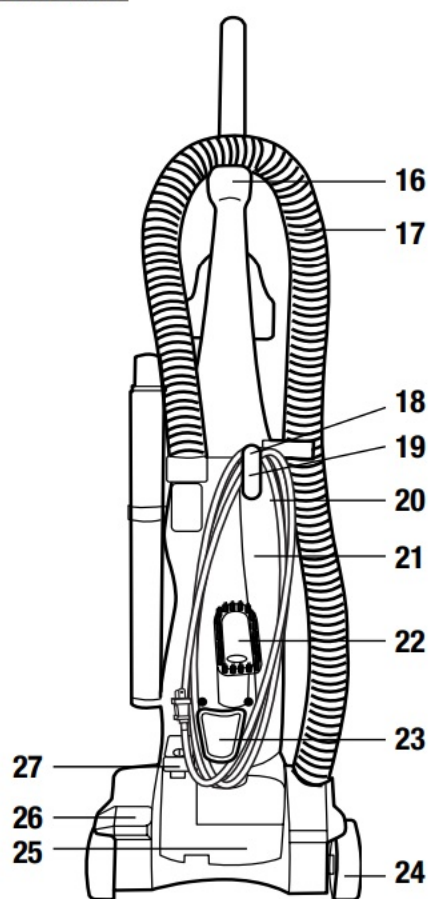
IMPORTANT: USE ONLY GENUINE ROYAL® REPLACEMENT PARTS.

FEATURES

FRONT VIEW



BACK VIEW



- 1. Handle Grip
- 2. Handle
- 3. Tool Clip*
- 4. Power Brush*
- 5. Crevice Tool (inside extension wand)
- 6. Extension Wand
- 7. Dirt Cup Release Button
- 8. Air Director
- 9. See Through Dirt Cup
- 10. Quick Release Dirt Cup Button (on back of dirt cup)
- 11. Filter Cover
- 12. Height Adjust Knob*
- 13. Bumper

- 14. Hose Connection
- 15. Hose Wand
- 16. Hose Caddy
- 17. Hose
- 18. Cord Guide
- 19. Cord Wrap with Quick Cord Release
- 20. Power Cord
- 21. Back Panel
- 22. Dusting Brush
- 23. Lower Cord Wrap
- 24. Wheels
- 25. Data Plate
- 26. Handle Release Pedal
- 27. On/Off Pedal

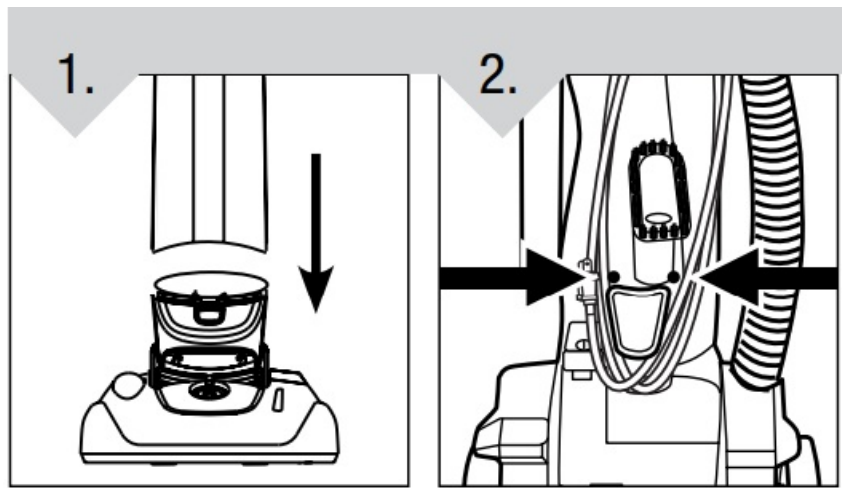
* In select models only

FILTER TYPE BELT STYLE

HOW TO ASSEMBLE

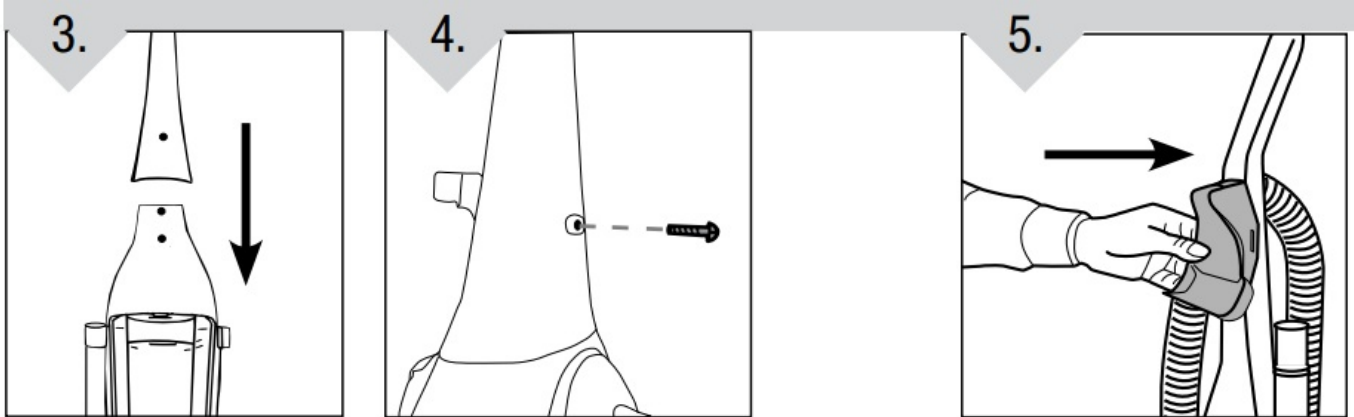
TOOL REQUIRED: PHILLIPS OR FLAT HEAD SCREWDRIVER

ATTACH BACK PANEL



Attach back panel of cleaner by pushing down into place. Insert the two (2) screws into the back of the back panel and tighten until secure.

HANDLE (BACK) ASSEMBLY ATTACH TOOL CLIP*

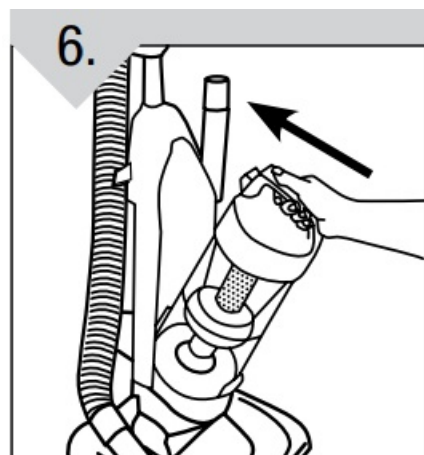


Place handle onto top of back panel.

Insert one (1) screw into the back of the handle and tighten, making sure the handle plug is secure.

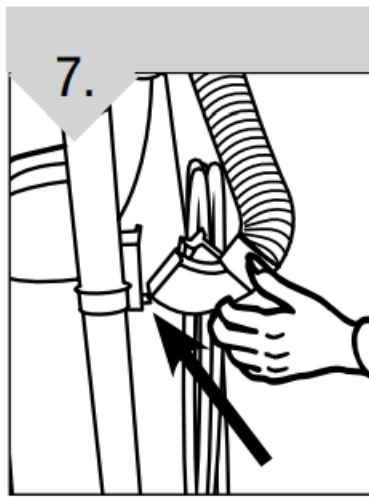
Line up tool clip* slots with tabs on handle. Press handle firmly until you hear a slight click to secure.

ATTACH DIRT CUP



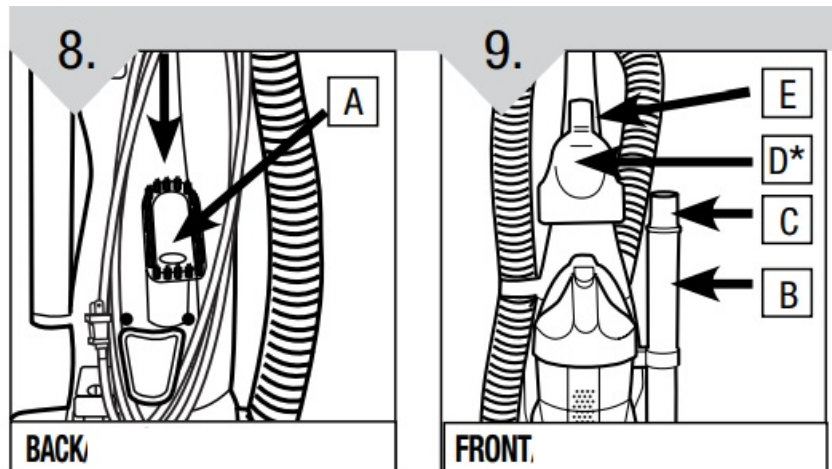
Replace dirt cup by tilting back until it snaps into place.

SECURE BACK HOSE



Insert bottom tab of hose intake into back panel port. Pivot up until latch snaps into place. Pull tab on top of hose intake to remove.

TOOL STORAGE



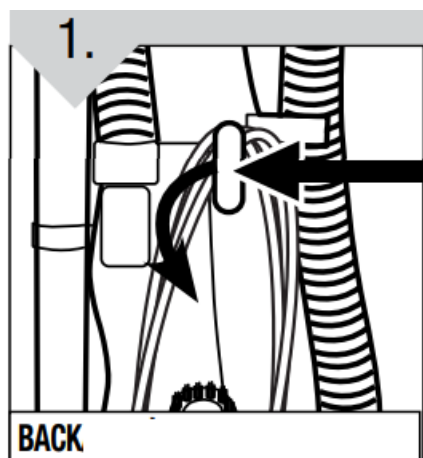
Attach tools: Slide the dust brush (A) onto post on the lower cord wrap with bristles facing out. Slide the extension wand (B)/crevice tool (C) into round slot on the front right side of tool caddy. Clip Turbo Tool holder (E) onto the front of the cleaner. Clip Power Brush Tool * (D*) onto the front of the Power Brush* Tool caddy. (***In select models only**)

HOW TO OPERATE

CAUTION: Brush agitator continues to rotate while hose is removed or in use and at all times while cleaner is on. Keep hair, loose clothing, fingers, and all parts of body away from brush area while cleaner is on.

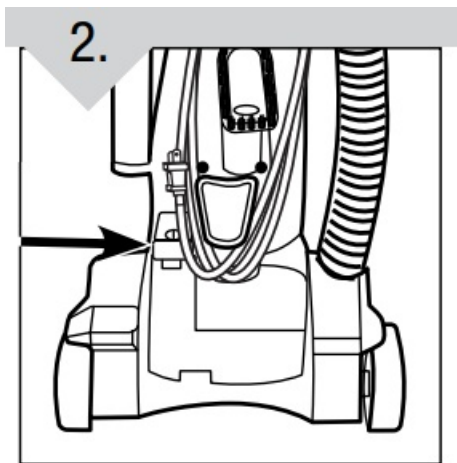
Cleaner must be in the upright position to lift the rotation brush off the carpet when used for above floor cleaning.

QUICK CORD RELEASE AND STORAGE



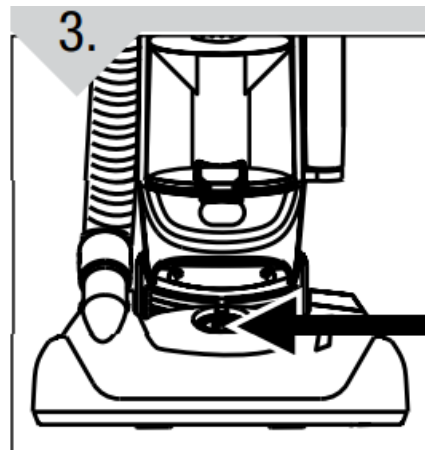
Turn quick cord release for easy cord removal. Plug into electrical outlet. Wrap cord on cord hooks for convenient storage. Attach the plug end to the cord.

ON/OFF FOOT PEDAL



Plug cord into electrical outlet. Turn cleaner on by depressing on/off foot pedal located on the back left side of the cleaner.

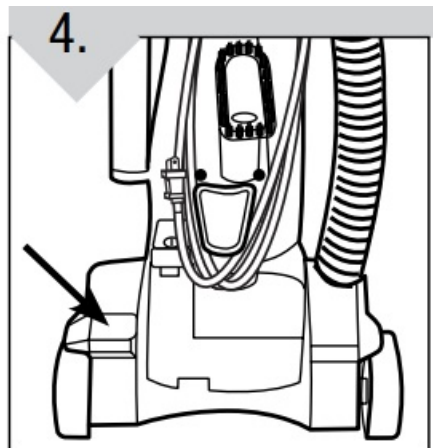
HEIGHT ADJUST KNOB*



Settings: For maximum cleaning performance, the following carpet height settings* are recommended:

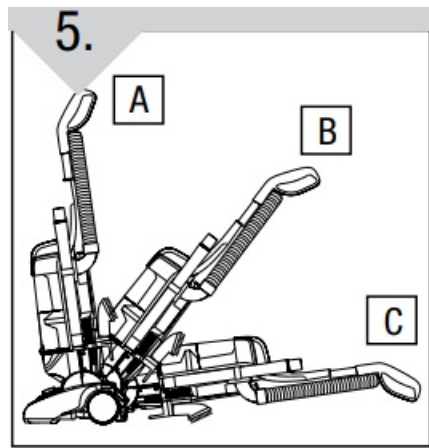
- Lowest setting: for all types of carpet. Note: If the cleaner is difficult to push, turn knob to the next higher setting.
- Higher settings: for very deep pile carpet, where easier pushing effort is desired, while maintaining good cleaning performance.
- In select models only

HANDLE RELEASE PEDAL



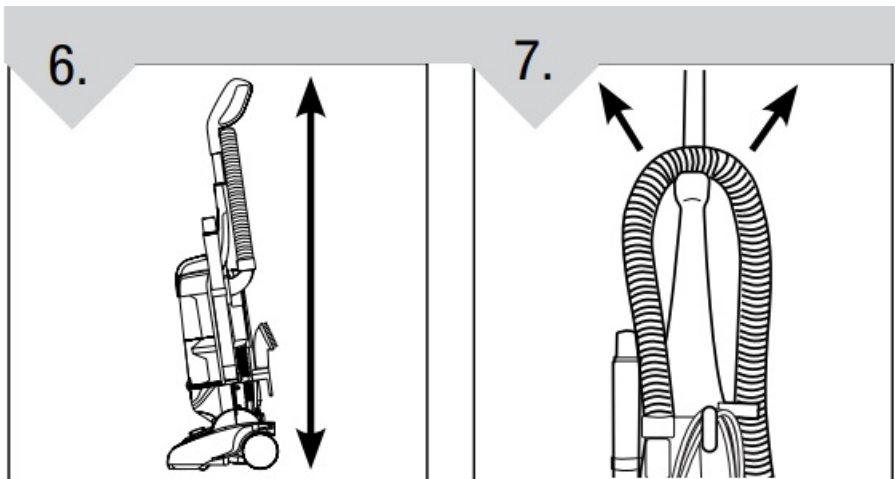
To release handle, push the handle release pedal located on the lower left side of the cleaner.

FLOOR / CARPET CLEANING

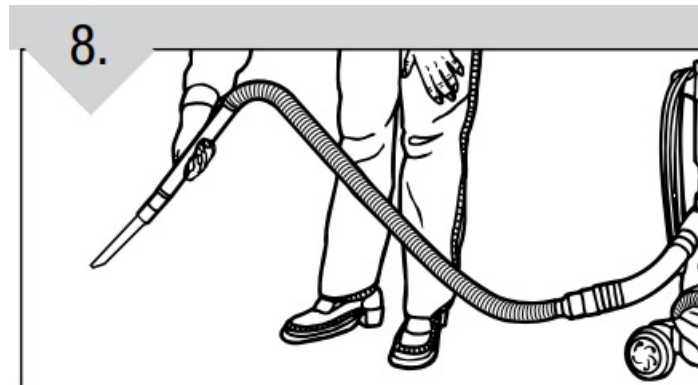


Move the handle and adjust it to the desired position for (A) storing the upright, (B) operating the cleaner, and (C) de-press the handle release pedal again to clean under furniture.

ABOVE FLOOR CLEANING

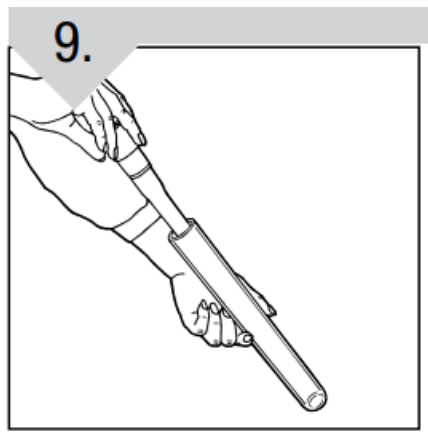


Cleaner must be in its upright position to raise brushroll.
Remove the hose from the hose caddy.



Choose any of the handy accessories or use the hose alone. Simply push the attachment firmly onto the end of the wand or hose handle. To remove tool, twist and pull apart gently.

EXTENSION WAND



If additional length is needed, use the extension wand and crevice tool.

NOTE: The crevice tool is stored inside the extension wand.

DIRT CUP & FILTER: REMOVAL & REPLACEMENT

WARNING: TO REDUCE THE RISK OF INJURY FROM MOVING PARTS – UNPLUG BEFORE SERVICING.

NOTE: Unplug cleaner before changing filter.

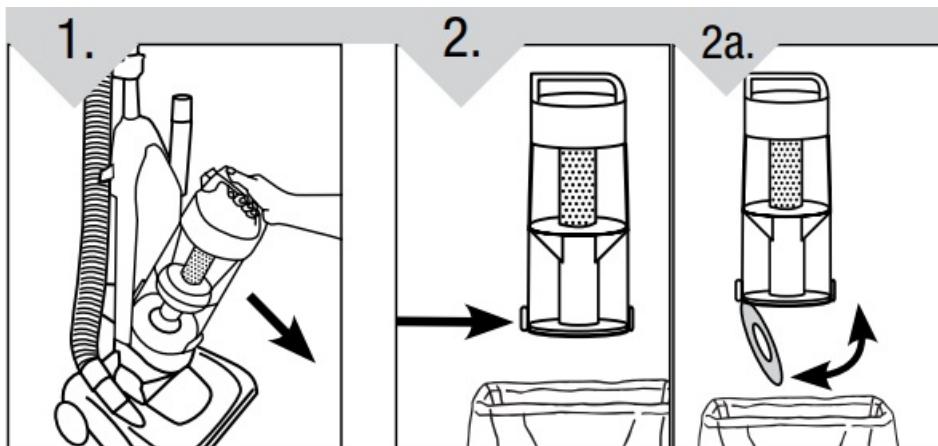
NOTE: Rinse foam filter once every month. If vacuum is used frequently, the filter may require more frequent cleaning.

NOTE: For best performance, replace pleated filter every 6 months.

FILTER TYPE F66

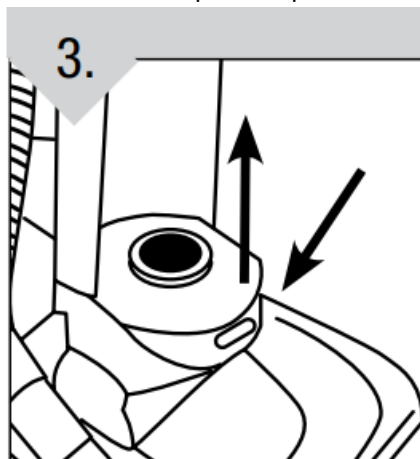
For filter replacement, please visit our website at www.dirtdevil.com to buy online or call customer service at 1-800-321-1134.

EMPTY DIRT CUP



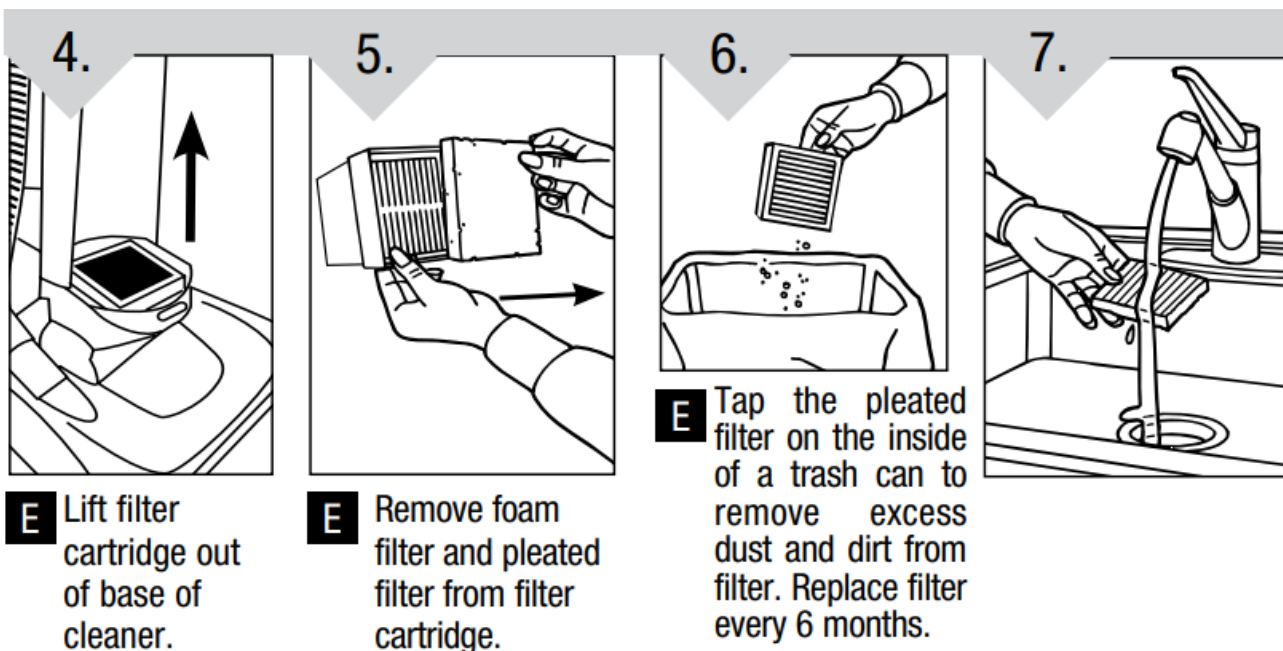
Press dirt cup release button on dust cup handle to remove the dirt container.

Hold dirt cup over garbage can and press quick release dirt cup button on **BACK** of dirt cup to empty. Make sure container bottom center opening is clear of debris. Snap dirt cup bottom back into place after emptying.



Push button on the filter cover. Lift up toward rear of cleaner to remove.

REMOVE FOAM FILTER

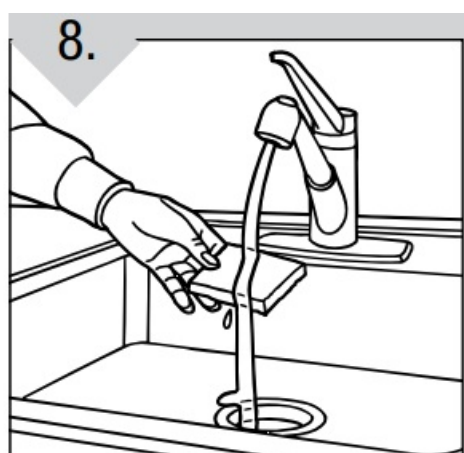


CLEAN PLEATED FILTER

CLEAN AND RINSE PLEATED FILTER

Hold filter under running water to rinse. DO NOT use soap/detergent. Tap excess water out of filter. Allow filter to COMPLETELY DRY for at least 24 hours before replacing in filter cartridge.

CLEAN FOAM FILTER

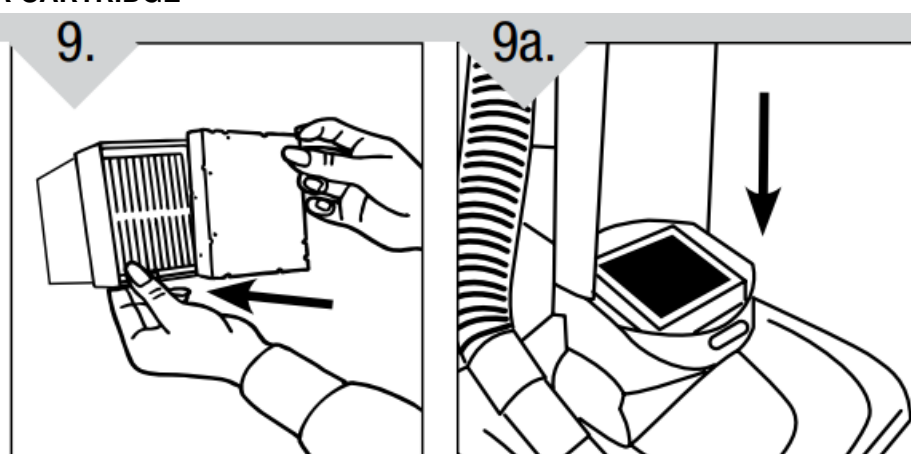


CLEAN AND RINSE FOAM FILTER

Hold filter under running water to rinse. DO NOT use soap/detergent. Tap excess water out of filter. Allow filter to COMPLETELY DRY for at least 24 hours before replacing in filter cartridge.

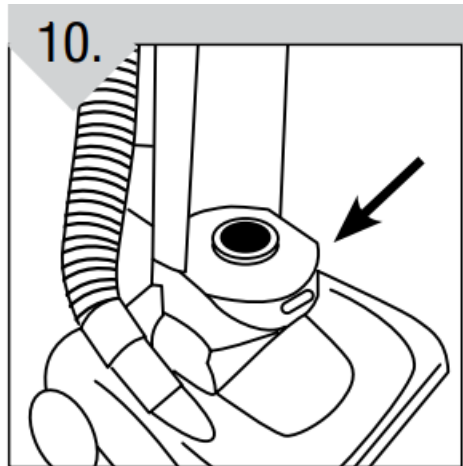
REPLACE FOAM FILTER

REPLACE FILTER CARTRIDGE

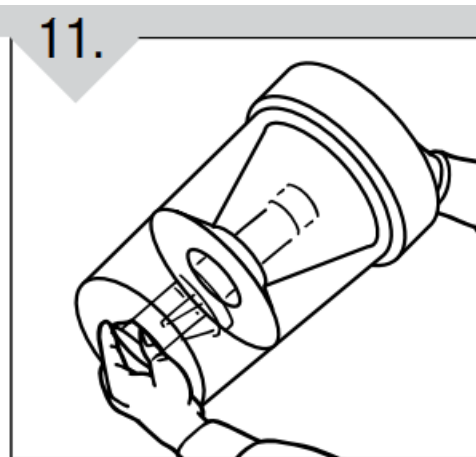


Return foam filter to filter cartridge.
Return filter cartridge to base of cleaner.

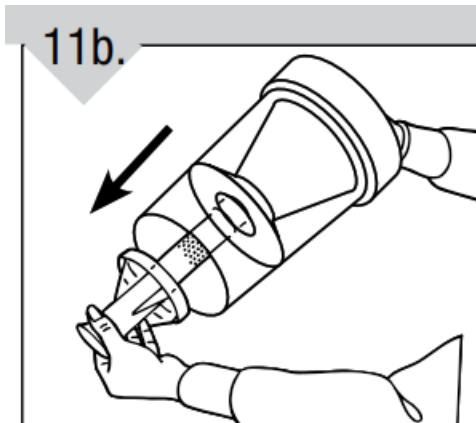
**TO CLEAN THE AIR DIRECTOR
REPLACE FILTER**



Return cover back into place to lock filter cartridge in base of cleaner.

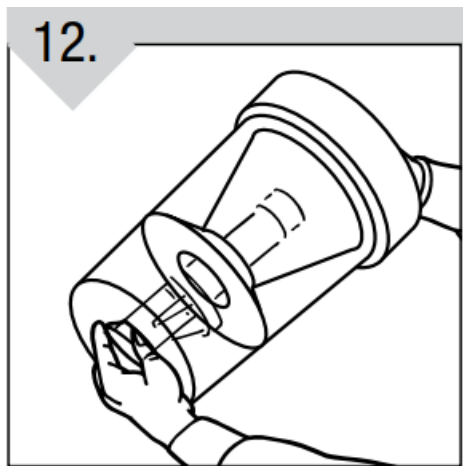


To remove Air Director, rotate 1/4 turn counterclockwise.

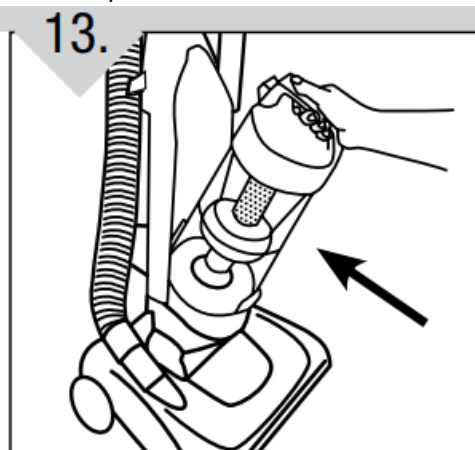


Remove Air Director from dirt cup.

REPLACE DIRT CUP



Clean and return the Air Director to the dirt cup. Rotate 1/4 turn clockwise to lock in place.



Return dirt cup to cleaner.

REGULAR MAINTENANCE: Each time the dirt container is emptied, the filter should be cleaned. Tap the filter firmly against the inside of a trash can until the dirt stops falling from the filter. (Filter will be discolored after use, this will not affect the filter's performance.) Do not brush the filter. The cleaning instructions may vary depending on the dirt conditions. In some cases, more or less cleaning of the filter may be required.

BELT OR BRUSHROLL: REMOVAL & REPLACEMENT

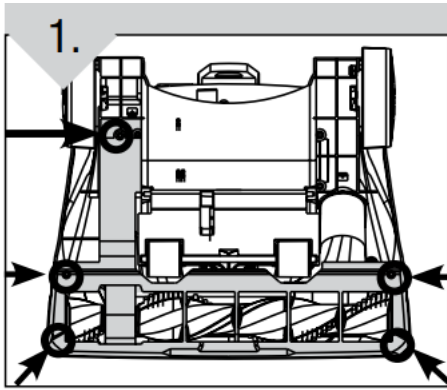
TOOL REQUIRED: PHILLIPS OR FLAT HEAD SCREWDRIVER

WARNING: TO REDUCE THE RISK OF INJURY FROM MOVING PARTS – UNPLUG BEFORE SERVICING.

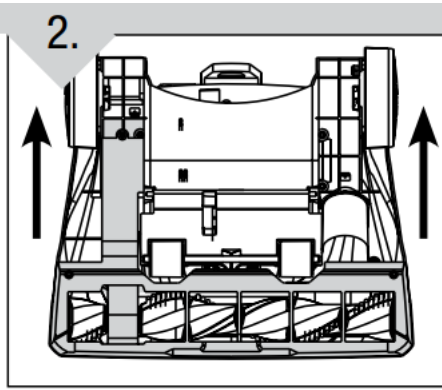
BELT STYLE 5

For belt replacement, please visit our website at www.dirtdevil.com to buy online or call customer service at 1-800-321-1134.

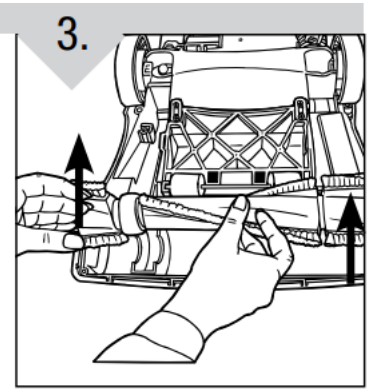
TO REMOVE BELT



E Lay cleaner flat and flip cleaner to expose nozzle base. Base should lay flat and face up. To remove nozzle guard, use Phillips screwdriver to remove the five (5) screws.

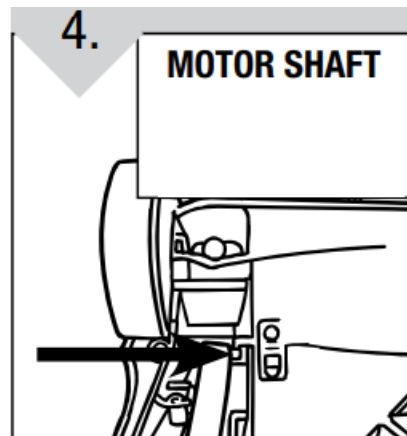


E Lift nozzle guard off.

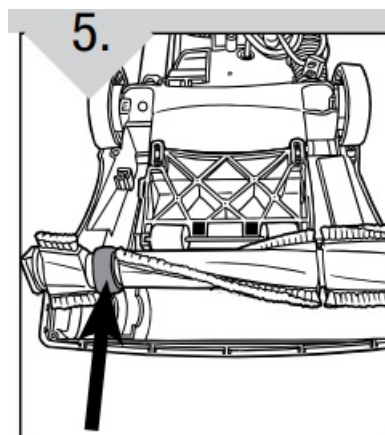


E Lift and remove brushroll. Dispose of old belt.

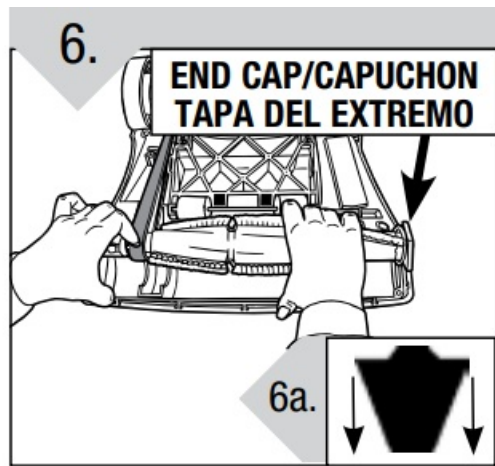
TO REPLACE BELT OR BRUSHROLL



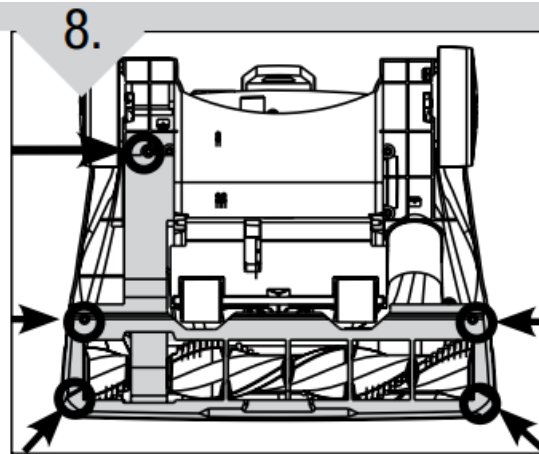
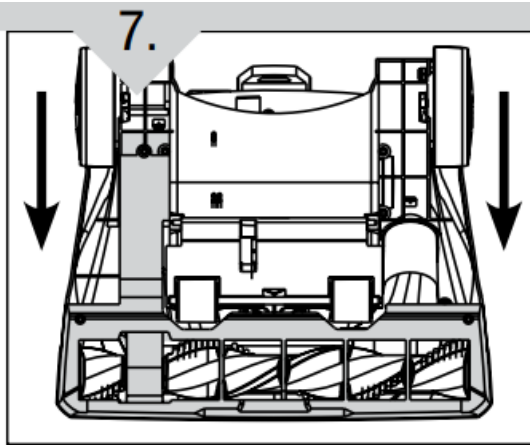
Slide belt onto motors haft.



Place new belt in area of brushroll without bristles.



With new belt in place, pull and slide brushroll into nozzle making sure that the brushroll end caps are in the correct orientation (6a inset). Rotate brushroll manually to make sure belt is properly aligned



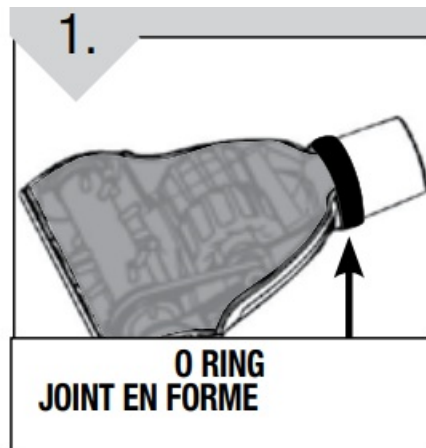
Reattach nozzle guard.

Replace all five (5) screws to secure nozzle guard.

GENERAL MAINTENANCE

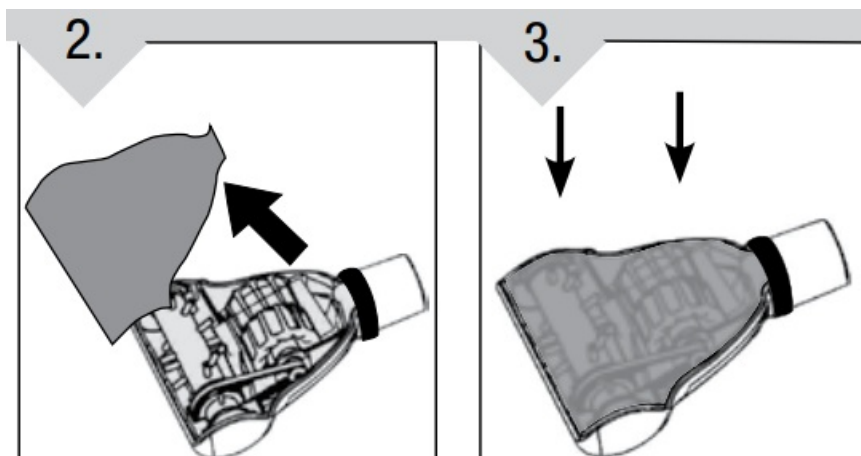
WARNING: TO REDUCE THE RISK OF INJURY FROM MOVING PARTS – UNPLUG BEFORE SERVICING.

DEBRIS REMOVAL/POWER BRUSH TOOL*



Turn the Power Brush Tool * over and slide off the O-ring.

* In select models only



Pivot lower housing and remove clog.

To reassemble, be sure tabs are engaged. Pivot the lower housing closed. Slip the O-ring into the groove at the neck of the Power Brush Tool* to complete reassembly.

TROUBLESHOOTING GUIDE

WARNING: TO REDUCE RISK OF PERSONAL INJURY – UNPLUG CLEANER BEFORE SERVICING

PROBLEM	POSSIBLE REASON	POSSIBLE SOLUTION
Cleaner won't run	1. Power cord not firmly plugged into outlet. 2. Blown fuse or tripped breaker. 3. Needs service. 4. Thermal Protector activated.	1. Plug unit in firmly.
		2. Check fuse or breaker in home. Replace fuse/ reset breaker. 3. Call Customer Service: 1-800-321-1134. 4. Allow cleaner to cool for 30 min.
Cleaner won't pick up or low suction	1. Dirt cup not installed correctly. 2. Dirt cup full. 3. Brushroll worn. 4. Broken or worn belt. 5. Clogged filter. 6. Nozzle/dirt passage hose clogged.	1. Review dirt cup removal and replacement. 2. Empty dirt cup. 3. Replace brushroll. 4. Replace belt. 5. Remove filter and clean. 6. Remove lower hose; remove obstruction.
Dust escaping from cleaner	1. Dirt cup full. 2. Dirt cup not installed correctly. 3. Hose not installed correctly. 4. Filter not installed completely.	1. Empty dirt cup. 2. Review dirt cup removal & replacement. 3. Review hose installation. 4. Review filter removal & replacement.
Cleaner tools won't pick-up	1. Hose clogged. 2. Dirt cup full. 3. Filter clogged.	1. Remove hose and tools; remove obstruction. 2. Empty dirt cup. 3. Clean filter.
Cleaner is difficult to push	1. Carpet height setting* is incorrect.	1. Set carpet height adjust lever* to appropriate setting for carpet being cleaned.

*** ANY OTHER SERVICING SHOULD BE DONE BY AN AUTHORIZED SERVICE REPRESENTATIVE CUSTOMER SERVICE (1-800-321-1134)**

In the event that further assistance is required, see your Yellow Pages for an authorized Royal® Dealer. Costs of any transportation to and from any place of repair are to be paid by the owner. The service parts used in this unit are easily replaced and readily available from an authorized Royal® Dealer or retailer. Always identify your cleaner

by the model number and manufacturing code when requesting information or ordering replacement parts. (The model number appears on the bottom of the cleaner.)



Call us toll-free: Customer Service

1-800-321-1134

Mon.-Fri. 8:00 a.m.-7:00 p.m. E.S.T.


(USA & Canada)

www.dirtdevil.com

©2011, 2012 All rights

reserved #960009695 R1 3/12

Documents / Resources

	Dirt Devil UD70100 Featherlight Bugless Upright [pdf] Owner's Manual UD70100 Featherlight Bugless Upright, UD70100, Featherlight Bugless Upright, Bugless Upright, Upright
---	---

References

- [My Bible](#)
- [Vacuum Cleaners | Upright, Hand, Stick & Canister Vacuums | Dirt Devil – Dirtdevil](#)
- [Manual-Hub.com - Free PDF manuals!](#)
- [User Manual](#)

[Manuals+](#), [Privacy Policy](#)

This website is an independent publication and is neither affiliated with nor endorsed by any of the trademark owners. The "Bluetooth®" word mark and logos are registered trademarks owned by Bluetooth SIG, Inc. The "Wi-Fi®" word mark and logos are registered trademarks owned by the Wi-Fi Alliance. Any use of these marks on this website does not imply any affiliation with or endorsement.