



Dirigible TH05 Bluetooth Temperature and Humidity Sensor User Manual

[Home](#) » [Dirigible](#) » Dirigible TH05 Bluetooth Temperature and Humidity Sensor User Manual 

Dirigible

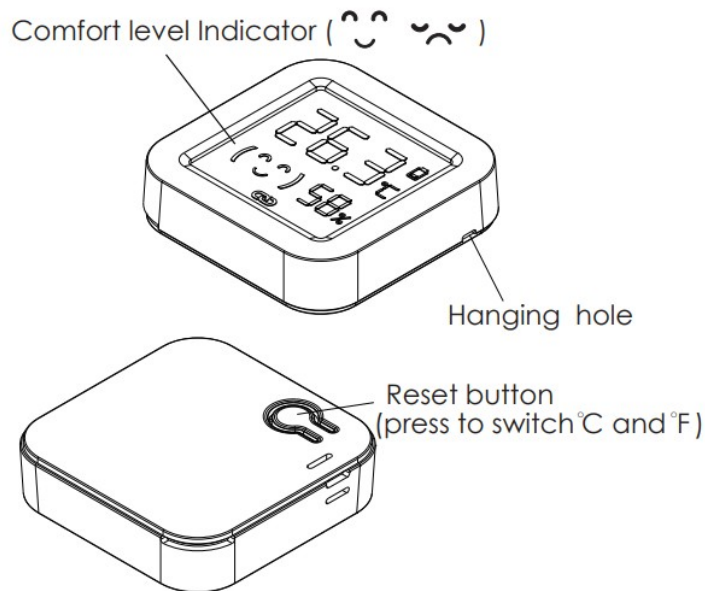
Bluetooth Temperature & Humidity Sensor
User Manual



Contents

- [1 Product Presentation:](#)
- [2 Functions](#)
- [3 FAQ](#)
- [4 Documents / Resources](#)
 - [4.1 References](#)
- [5 Related Posts](#)

Product Presentation:



Specification:

Size: 43*43*10 mm

Battery: DC 3V (CR 2032)

Wireless Connection: Bluetooth 5.1 BLE

Temperature Measure Range: -9.9°C ~ 60°C

Temperature Accuracy: 1°C±

Humidity Measure Range: 0% RH~99% RH

Humidity Accuracy: ±5% RH

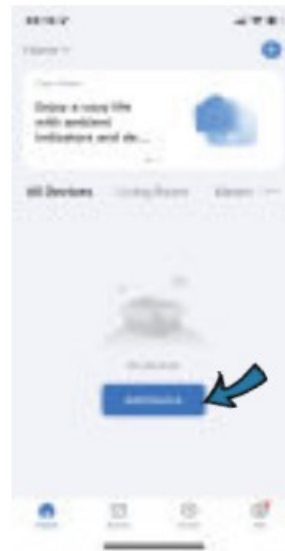
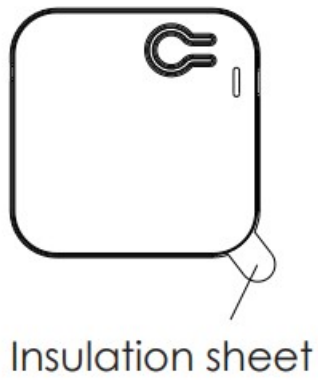
How to set up:

1. Use your smartphone to scan QR code, or search “Smart Life” app in Google Play Store or APP Store to download and install.

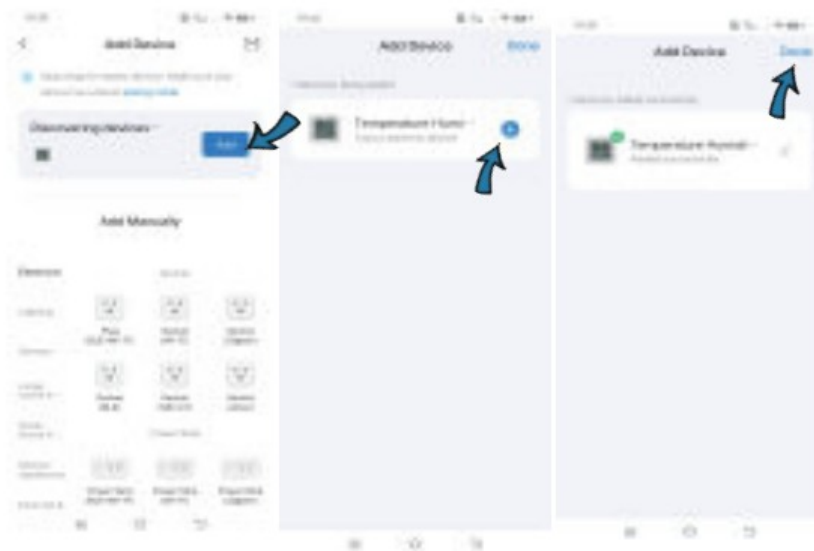


<https://smartapp.tuya.com/smartlife>

2. Create an account with your mobile number and authentication code.
3. Remove the insulation sheet at the back, the symbol “🔗” on the screen will flash. Click “+” at the upper right corner of page, or click “Add Device”.

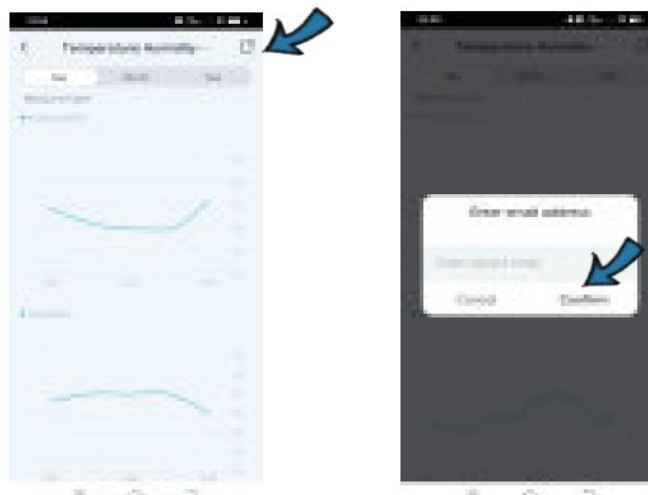


4. The app will advise you to turn on the bluetooth in your mobile, it will search the device and connect automatically.



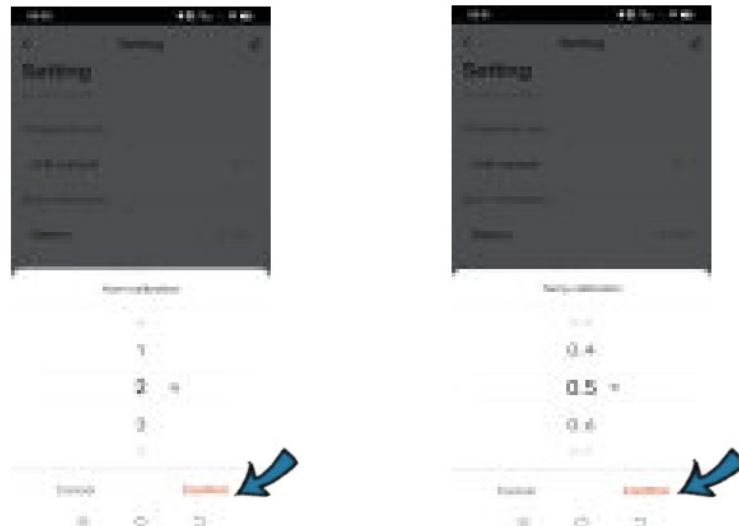
Functions

1. Temp & Humidity records You can view the historic data of temp and humidity stored for 1 year, and export to your Email address.



2. Temp & Humidity Calibration

You can calibrate temperature and humidity if need, select and confirm calibration value in the setting, calibrated temp and humidity will sync both on the screen and in the app.



3. Temperature Unit Switch

You can switch temperature unit between Fahrenheit and Celsius in the setting, or press the reset button once, the temperature unit will sync both on the screen and in the app.

4. Temp & Humidity Alarm

After bluetooth gateway is connected, you can preset the upper and lower limit for the temperature and humidity, when the value exceeds the limit, it will push instant alarm message via app.

5. Smart Linkage

After you configure bluetooth gateway, you can achieve scene linkage with other tuya smart devices.

6. Third-party Voice Control

Support enquiring about temp, humidity via Amazon and Google smart speaker after the bluetooth gateway is configured.

7. Comfort Level Display

You can view the comfort indicator on the screen to intuitively show whether indoor environment is comfortable or not.

😊 18°C (64.4°F) < Temp ≤ 28°C (82.4°F) 40% < Humidity ≤ 65%
😞 It will display when temperature and humidity exceeds above range

FAQ

1 . About 30 mins after configuration completed, the temp and humidity will be more accurate, more closer to the environment temperature and humidity.

2 . When the sensor connects to App via bluetooth, if you want to view the temperature and humidity, the distance between sensor and mobile should be kept within 5 meters.

3. When the sensor is added to bluetooth gateway, you can view the temperature/humidity anywhere, and the distance between sensor and bluetooth gateway should be kept within 10 meters.

When the environment temperature change > ± 0.5°C or humidity > ± 5%, it will update promptly, otherwise, it will update every 10 mins . 4.

If the sensor doesn't connect to App and bluetooth gateway . When the environment temperature change $> \pm 0.5^{\circ}\text{C}$ or humidity $> \pm 5\%$ it will update promptly, otherwise, it will update every 1 hour. 5 .

6. Voice Commands for Alexa and Google: (bluetooth gateway is required to configure) OK Google, what is the humidity ? OK Google, what is the temperature ? Alexa, what is the humidity ? Alexa, what is the temperature of ?

FCC Statement

This equipment has been tested and found to comply with the limits for a Class B digital device, pursuant to part 15 of the FCC rules.

these limits are designed to provide reasonable protection against harmful interference in a residential installation. This equipment generates,uses and can radiate radio frequency energy and , if not installed and used in accordance with the instructions, may cause harmful interference to radio communications.However, there is no guarantee that interference will not occur in a particular installation. If this equipment does cause harmful interference to radio or television reception, which can be determined by turning the equipment off and on, the user is encouraged to try to correct the interference by one or more of the following measures:

- Reorient or relocate the receiving antenna.
- Increase the separation between the equipment and receiver.
- Connect the equipment into an outlet on a circuit different from that to which the receiver is connected.
- Consult the dealer or an experienced radio /TV technician for help.

To assure continued compliance, any changes or modifications not expressly approved by the party. Responsible for compliance could void the user's authority to operate this equipment. (Example-use only shielded interface cables when connecting to computer or peripheral devices).

This equipment complies with Part 15 of the FCC Rules. Operation is subject to the following two conditions:

- (1) This device may not cause harmful interference ,and
- (2) This device must accept any interference received, including interference that may cause undesired operation.


FCC Radiation Exposure Statement:

The equipment complies with FCC Radiation exposure limits set forth for uncontrolled environment.

This equipment should be installed and operated with minimum distance 20cm between the radiator and your body.

Dirigible

Documents / Resources

	Dirigible TH05 Bluetooth Temperature and Humidity Sensor [pdf] User Manual TH05, 2A8TU-TH05, 2A8TUTH05, TH05 Bluetooth Temperature and Humidity Sensor, Bluetooth Temperature and Humidity Sensor, Temperature and Humidity Sensor, Humidity Sensor
---	--

References

- [User Manual](#)

[Manuals+](#), [Privacy Policy](#)

This website is an independent publication and is neither affiliated with nor endorsed by any of the trademark owners. The "Bluetooth®" word mark and logos are registered trademarks owned by Bluetooth SIG, Inc. The "Wi-Fi®" word mark and logos are registered trademarks owned by the Wi-Fi Alliance. Any use of these marks on this website does not imply any affiliation with or endorsement.