



DirecTV On-Screen Menu Help Guide

[Home](#) » [DirecTV](#) » DirecTV On-Screen Menu Help Guide 

Contents

- [1 DirecTV On-Screen Menu Help Guide](#)
- [2 Related Posts](#)

DirecTV On-Screen Menu Help Guide



Smart Search

Spend less time searching and more time watching with our intuitive search feature.

Available on all HD DVR and DVR Receivers (model R22 or later).



Press **MENU** on your remote.

Choose **SEARCH & BROWSE**, then **SMART SEARCH**.

Search by title, person, channel or keyword.

Scroll through the channel options until

you find the one you're looking for, then press SELECT.

Customize Your Guide

Quickly get to your favorite channel right away or discover something new.



DC's Legends of Tomorrow on **CW**

Press the GUIDE button twice to search by category. Scroll through the options, then press SELECT to view a category.

QuickTune

Instantly access nine of your favorite, most-watched channels so you can tune to them right away.

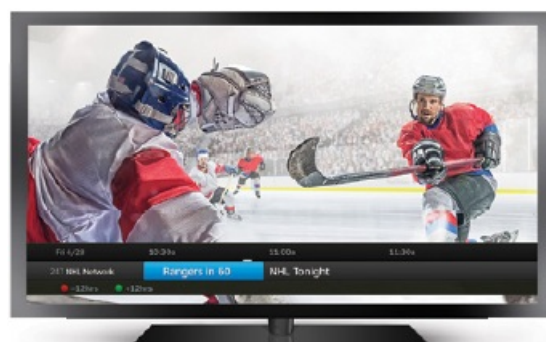


To add a favorite channel, press the UP ARROW on your remote while watching. Press ENTER to add the channel.

To access your QuickTune favorites at any time, press the UP ARROW on your remote.

One-Line On-Screen Guide

See what's coming up without missing what's on. View the One-Line On-Screen Guide while viewing your program on the full screen.



Press ENTER or the BLUE button on your remote.
Scroll through the guide one line at a time.
Press EXIT to close the guide

DoublePlay

Don't miss a minute of your favorite shows.
Quickly toggle between any two games or shows that are simultaneously recording.

Available with DVR Receivers (model R22 or later) or an HD DVR (model HR20 or later). Professional and collegiate sports subscriptions sold separately



While watching one program, press the DOWN ARROW on your remote. Press the DOWN ARROW again to select a show on a different channel. Use the DOWN ARROW to flip between the two.

Parental Controls

Feel better knowing what your kids are watching when you're not around. You can block specific channels and programs based on ratings and viewing times, plus set spending limits for Pay Per View titles.



Press MENU on your remote.
Select SETTINGS & HELP, then PARENTAL CONTROLS.
Choose from options on the left to set up your controls.

Record Shows

Press RECORD once to record an individual episode or twice to record an entire season.

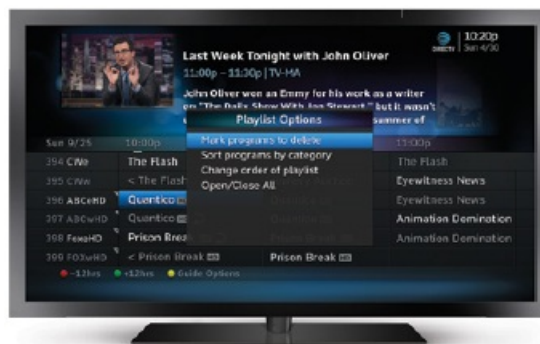


Nashville on CMT

To access your recorded shows:
Press LIST on your remote.
Scroll to your desired recording
and press SELECT.
You can also pause, rewind and
fast-forward anytime.

Organize Playlist

Sort, delete and arrange your shows
according to your preference.
Available on all HD DVR and DVR Receivers.



Last Week Tonight* with John Oliver on HBO
HBO* subscription required.

Press LIST on your remote.
Press the DASH or YELLOW button
and choose from a variety of options

Enhance Your Live TV Experience

If you need to step away during your show,
no worries. You won't miss a second of
your entertainment.



The Voice on NBC



Press PAUSE during any live program

or sporting event, then press PLAY when you're ready to resume.

You can then rewind or fast-forward to catch the exact moment you want to see.

Press ADVANCE to scan your show with a controlled 30-second FAST-FORWARD. If you spot something you want to see, you can quickly go back. Hold the button down to jump to the end of the selected program.

HD DVR in Every Room

Pause and rewind live TV, plus record and delete shows, from any room. Record up to five programs of your choice at the same time.

Requires one TV connected to a Genie HD DVR and a Genie Mini or DIRECTV Ready TV/Device for each additional TV. Limit three remote viewings per Genie HD DVR at a time.



Press the LIST button to pull up your recordings, then refer to the OPTIONS prompt.

Scroll and select FILTER BY PLAYLIST.

Select ALL to view recordings from all TVs or LOCAL PLAYLIST to view a recording from the TV you are watching.

Picture in Picture (PIP)

Watch two shows at once without having to change the channel.

This feature is available only on the TV directly connected to Genie HD DVR.



Press the INFO button on your remote and select PIP.

Turn on PIP and select the PIP screen position

Genie Recommends

Find that new favorite show everyone's talking about. Genie recommends the most popular, can't-miss shows that are on right now. Opt-in to Genie Recommends required.



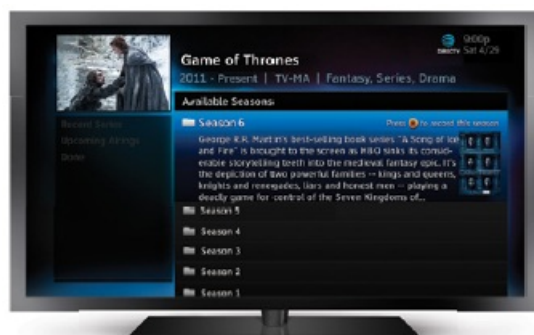
I

Press MENU on your remote.
Select SEARCH & BROWSE.
Select TV SHOWS.

All Seasons

Quickly locate and record entire seasons. Every available episode is arranged by season and plays automatically one after the other—binge-watching is easier than ever.

Available on select HD DVR Receivers (HR34 or later). Due to programmer restrictions, some episodes or seasons may be unavailable



Game of Thrones® on HBO
HBO® subscription required.

Press MENU, then SEARCH & BROWSE.
Use SMART SEARCH to find and
select a show.
ALL SEASONS will appear in the top left .
Select RECORD SERIES.

On Demand4

Choose from thousands of shows and movies available On Demand anytime, including hundreds of titles that the whole family can enjoy.



Pulp Fiction on SHOWTIME.
SHOWTIME® subscription required.

There are multiple ways to access On Demand.

If you know the network channel number:

Enter a “1” in front of that number. For example, SHOWTIME® On Demand is on Ch. 1545.

In the guide, highlight the PLUS sign next to the channel number.

Go to Ch. 1000 to browse a huge selection of shows and movies by network or category

Kids Content On Demand⁴

Get instant access to entertainment that kids and parents can enjoy together.



Storks on DIRECTV CINEMA®

Go to Ch. 1111.

Select from a variety of themed options from the On Demand menu on the left .

Choose from hundreds of popular children’s shows and movies that are safe for viewing by the whole family.

72 Hour Rewind⁵

Now you can watch select shows you forgot to DVR from the last 72 hours.

Available with DVR Receivers (model R22 or later) or an HD DVR (model HR20 or later).



Expedition Unknown on travel

Look for the PLUS icon near the channel name in the guide.

Press SELECT on the remote.

Navigate to MISSED IT? WATCH NOW!
and press SELECT.

All On Demand content from the last 7 days
will appear in chronological order.

Restart5

Tuned in late? Restart select shows already in progress so you can watch from the very beginning.
Available with DVR Receivers (model R22 or later) or an HD DVR (model HR20 or later).



Look for the RESTART ARROW
in the channel guide.

Press SELECT on the remote to choose
the show in progress.

Press the REWIND button and the show
will start over.

Pandora

Enter a favorite artist, track or genre and
Pandora will create a personalized station
that includes your favorites as well as new
music the app has discovered for you.



Press MENU on your remote.

Select EXTRAS.

Choose PANDORA.

Popular Sports

Browse current and upcoming games by
sport, date or time. Create a list of your favorite
teams and even set your Genie® HD DVR to
record their every game

Press MENU on your remote.

Select SEARCH & BROWSE.

Select SPORTS

SCOREGUIDE™

Get sports scores and the latest stats instantly without changing your channel or missing a big play.

For Internet-connected HD DVRs, press the RIGHT ARROW button on your remote to access SCOREGUIDE from any channel. For all other receivers, press the RED button while watching any sports channel.

SPORTSMIX® Channel8

Watch up to eight different sporting events, highlights and analysis from popular sports networks at the same time, all in HD! Channel available in HD only.

Tune to Ch. 205 SPORTSMIX.

Use the ARROW buttons to highlight a channel and to hear audio for that channel. Press SELECT to tune directly to that specific channel.

Tennis and Golf Experiences

Don't miss any of the action with expanded live coverage of major golf and tennis events. Plus, check the latest scores, leaderboards and matchups, and access player bios.

Visit directv.com/golf or directv.com/tennis for tournament dates and channel information. When you're tuned into any of the matches, press the RED button on your remote to get updates in real time.

AUDIENCE®

AT&T's original entertainment channel is uncut, commercial-free and available to all DIRECTV customers.

Tune to Ch. 239 to enjoy:

Original series: shows like Kingdom, Ice, Undeniable with Joe Buck, You Me Her, Off Camera and more. Groundbreaking documentaries: films that inspire, educate and entertain. Sports and entertainment news: live episodes of The Dan Patrick Show and The Rich Eisen Show every weekday.

DIRECTV CINEMA® Exclusives

Enjoy exclusive premieres on DIRECTV CINEMA® before they're in theaters. New hit movies and acclaimed indie films are added every month.

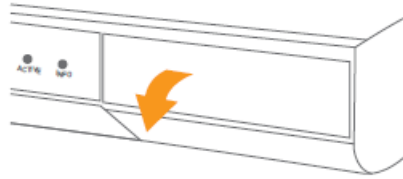
Movies start on Ch. 125 and

On Demand4 Ch. 1000.

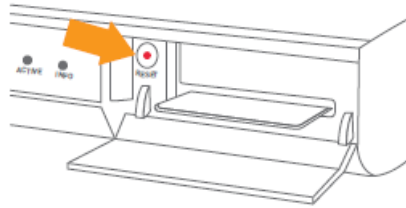
Press SELECT to watch the movie you want to enjoy.

Troubleshooting

Get quick solutions for resolving service queries on your own.
try this first! An easy solution for most problems:
RESET YOUR RECEIVER.



Press the red RESET button next to the card slot on the receiver.



Note: On Genie Minis and some receiver models, the reset button is on the side of the device.

Technical issues

No Internet Connection Detected on Your DIRECTV® Receiver

Additional Possible Causes

- Ethernet or coax cable is loose or disconnected.
- Network settings on the receiver or the wireless router have changed.
- Receiver has a poor connection to the wireless network.

QUICK SOLUTIONS

If you are experiencing problems with receiver connectivity, visit directv.com/connect

1. Check that the gateway is plugged in and its lights are on.
2. Verify Internet service is active by checking your home computer.

Frozen/Pixelated Screen Possible Cause

- Your receiver is having trouble communicating with your satellite dish.

QUICK SOLUTIONS

1. Check all connections on the back of your receiver, starting with the SAT-IN connection, and make sure they're secure.
2. Reset the receiver or Genie Mini by pressing the red reset button located on the side of the device or inside the access card door on the front panel.

No Signal/Snowy Screen Possible Cause

- TV is on the wrong input, channel or audio/visual connection

QUICK SOLUTIONS

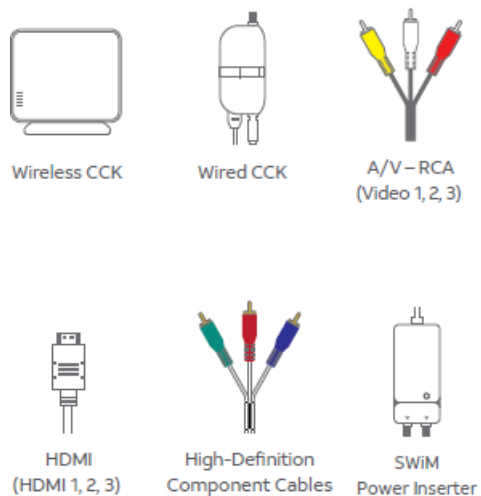
1. Verify both TV and receiver are on.
2. On your DIRECTV® Remote, press TV INPUT
OR on your TV remote, press the INPUT or

SOURCE button. On the RC71 Remote, press and hold ENTER for 3 seconds.

Cycle through inputs slowly until picture returns.

3. Check that all video cables between receiver and TV are securely plugged into matching ports.

Your DIRECTV® System may include the following components:



[Download the PDF version of the user manual.](#)