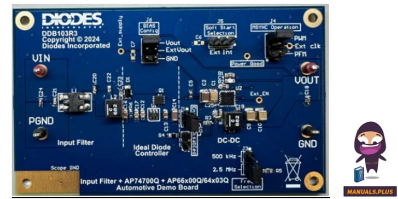


DIODES
DDB103R3
Ideal Diode
Controller



DIODES DDB103R3 Ideal Diode Controller User Guide

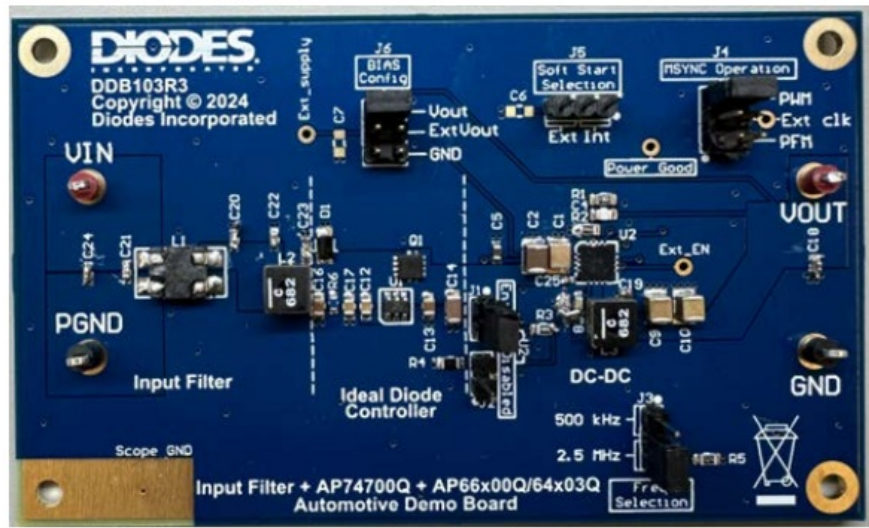
[Home](#) » [DIODES](#) » DIODES DDB103R3 Ideal Diode Controller User Guide 

Contents

- [1 DIODES DDB103R3 Ideal Diode Controller](#)
- [2 Quick Start Guide](#)
- [3 Jumper Configuration](#)
- [4 Description](#)
- [5 Schematic Diagram](#)
- [6 Board Layers \(top view\)](#)
- [7 BILL OF MATERIALS for DDB103R3 EVM](#)
- [8 IMPORTANT NOTICE](#)
- [9 Specifications](#)
- [10 FAQ](#)
- [11 Documents / Resources](#)
 - [11.1 References](#)



DIODES DDB103R3 Ideal Diode Controller



Quick Start Guide



Figure 1: DDB103R3 Demo Board

Pin	Description
Vin	3.8V – 60V Supply In
GND	Common PCB ground
PGND	PCB Input GND
Vout	Output voltage (5V)
J1	Enable device using the jumper
J2	Disable device using the jumper
J3	Configures switching frequency to 500 kHz or 2.5 MHz using jumpers.
J4, ExtClk	Configures the MSYNC operation to PWM, PFM or External Clock operation using jumpers
J5	Configure internal or external soft start using jumpers
J6	Configures BIAS pin to Vout, PGND or external voltage source (using ExtSupply)
Ext_EN	Connect external voltage source on the enable pin

Table 1: DDB103R3 Pin Description

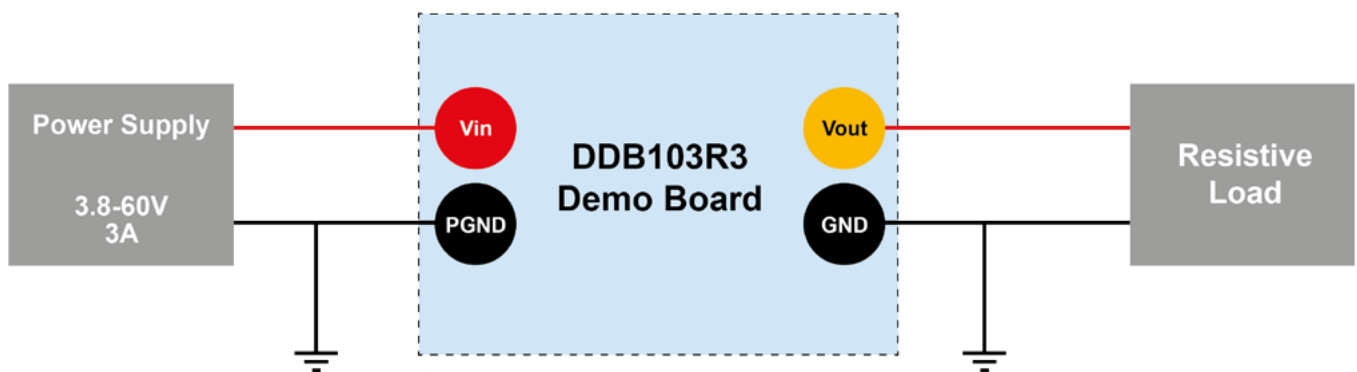


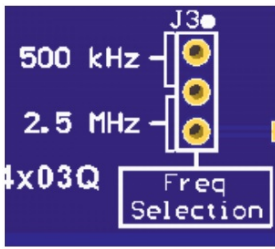
Figure 2: DDB103R3 Demo Board Test Setup


The DDB103R3 demo board has a simple layout and allows access to the appropriate signals through test points. To evaluate the performance of the DDB103R3, follow the procedure below:

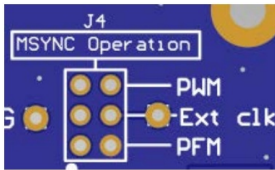
1. Set jumpers to default positions. For more information about jumper configuration, please see page 2.
2. Connect a DC power supply between the VIN and GND terminals.
3. Connect the load to the VOUT and GND terminals.
4. Check all connections, then turn on the power supply.
5. The EVM board should now power up with a 5V output voltage.


Jumper Configuration

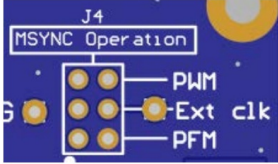
Note: A pale blue row indicates the default jumper position.

	J1/J2	Effect on DDB103R3
	Header on J1	Enables the AP66x00Q/AP64x03Q device
	Header on J2	Disables the AP66x00Q/AP64x03Q device
	Neither/Both Connected	Not recommended

	J3	Effect on DDB103R3
	Header on pin 1 and 2	Switching frequency of the AP66x00Q/AP64x03Q set to 500 kHz
	Header on pin 2 and 3	Switching frequency of the AP66x00Q/AP64x03Q to 2.5MHz
	Neither/Both Connected	Not recommended

	J4	Effect on DDB103R3
	Header on top 2 (horizontal) pins	MSYNC to forced PWM (VCC) operation
	Header on middle 2 (horizontal) pins	MSYNC to an external clock source on MSYNC pin for synchronization with positive edge trigger and PWM.
	Header on bottom 2 (horizontal) pins	MSYNC to PFM (GND) operation
	Neither/Both Connected	Not recommended

	J5	Effect on DDB103R3
	Header on left 2 (horizontal) pins	Connect GND through capacitor for default external soft start
	Header on right 2 (horizontal) pins	Connect VCC for internal soft start of 1.7ms
	Neither/Both Connected	Not recommended

	J6	Effect on DDB103R3
	Header on top 2 (horizontal) pins	Connect BIAS pin to VOUT
	Header on middle 2 (horizontal) pins	Connect an external voltage source on BIAS pin (<15 V)
	Header on bottom 2 (horizontal) pins	Connect BIAS pin to PGND
	Neither/Both Connected	Not recommended

Description

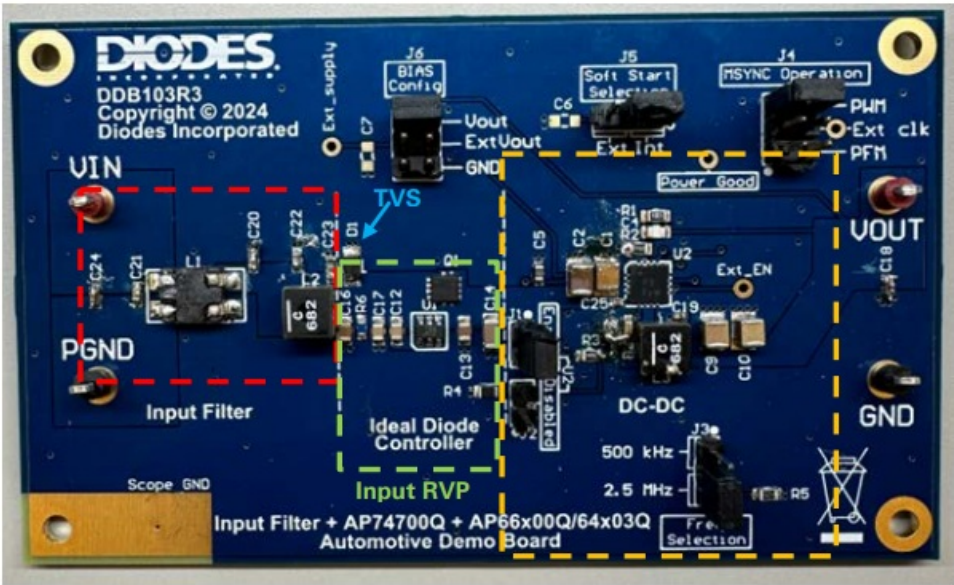


Figure 3: Picture of the DDB103R3 Demo Board

The DDB103R3 Demo Board showcases the AP66x00Q/AP64x03Q 3A DC-DC buck converter, the AP74700Q ideal diode controller, and an EMI input filter. It demonstrates a system-level solution with reverse voltage protection, ISO 7637-2 transient pulse protection (using a suitable TVS), EMI filtering that passes CISPR 25 Class 5, and the DC-DC buck converter. The input filter (as shown in figure 3 within the red square) contains a common mode choke with capacitors on either side in a Pi configuration. This is connected in series with an LC low pass filter containing an inductor and a capacitor. This combination makes the board CISPR 25 class 5 compliant.

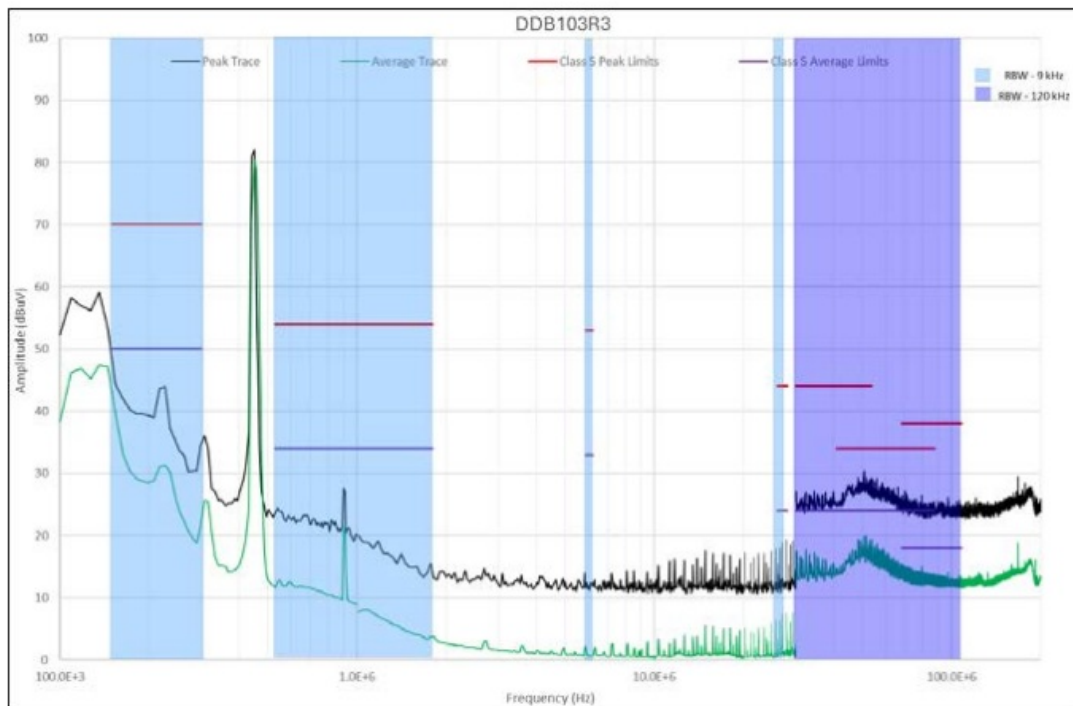


Figure 4: EMC Sweep of DDB103R3 from 100 kHz – 200 MHz, 13.5V_{in}, 3A load, against CISPR 25 Class 5 limits

The TVS is highlighted in light blue; this provides the board with ISO7367-2 pulse protection (the SMF4L30CAQ, for example, is a suitable choice). The input RVP section of the board is highlighted in green and consist of the AP74700Q.

Description (continued)

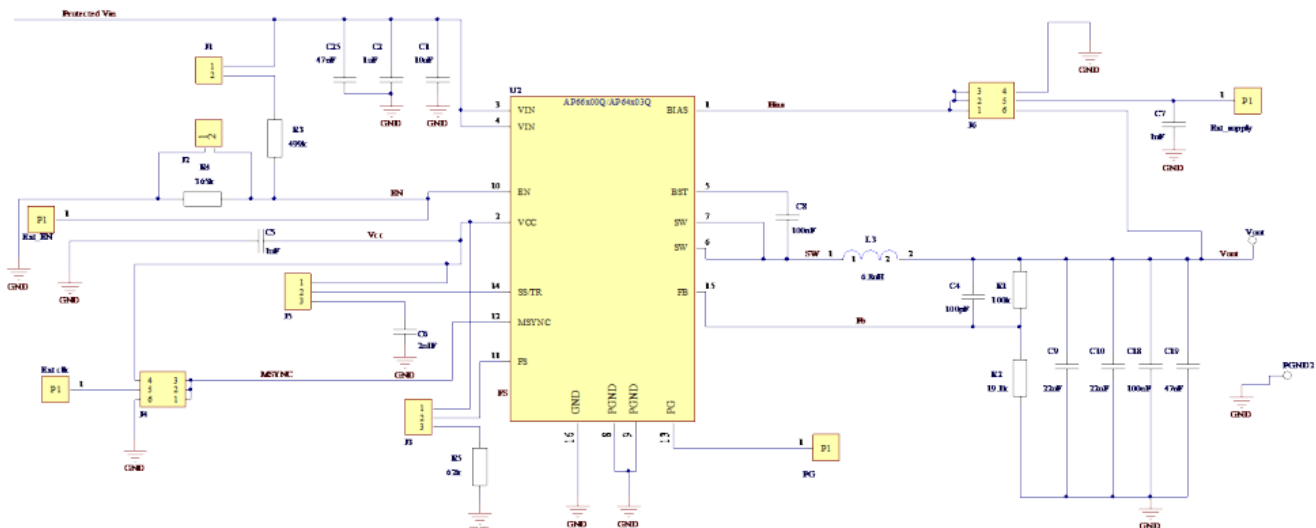
The AP74700Q is a $\pm 65V$ ideal diode MOSFET controller which provides a low-loss 20mV forward voltage drop rectifier in unidirectional power paths, as well as reverse voltage. The AP74700Q supports a wide input operation range from 3.2V to 65V, allowing control of many popular DC rail voltages such as 12V, 24V, or higher automotive battery systems. The 3.2V input voltage support fits for severe cold crank requirements in automotive systems. The AP74700Q can withstand and protect the loads from reverse voltages down to -65V.

The MOSFET design requirements of the AP74700Q are:

- 60V VDS(MAX) and $\pm 20V$ VGS(MAX)
- $RDS(ON) @ I_{Load}(Nominal): (20\text{ mV} / I_{Load}(Nominal)) \leq RDS(ON)$
- MOSFET gate threshold voltage VTH: 2V maximum

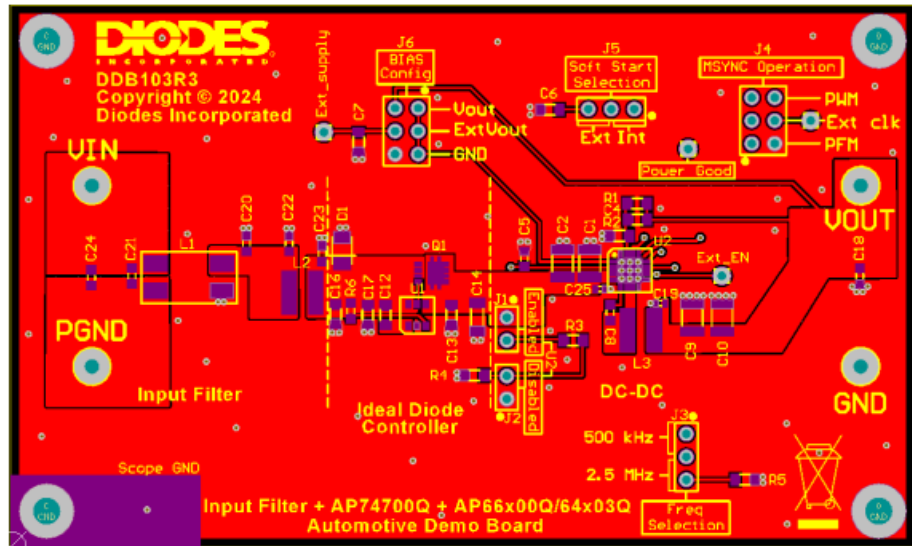
Due to the DDB103R3's 3x3 footprint and the AP74700Q's design requirements, the DMTH6016LFVWQ is the best choice of MOSFET (Q1). The AP66x00Q/AP64x03Q (highlighted in yellow) are adjustable switching frequency, internally compensated, synchronous DC-DC buck converter families. The AP66x00Q family has a VIN range of 3.8V-60V, and the AP64x03Q family has a VIN of 3.8V-40V. The AP66x00Q/AP64x03Q device families fully integrate a high-side power MOSFET and low-side power MOSFET to provide high-efficiency step-down DC-DC conversion. The AP66x00Q/AP64x03Q enables continuous load currents of up to 2A/3A, with efficiency as high as 95%. It features current mode control operation, which enables easy loop stabilization supporting a wide range of capacitive loads. The AP66x00Q/AP64x03Q simplifies board layout with its high level of integration and minimal external components. The AP66x00Q/AP64x03Q is available in the U-QFN4040-16/SWP package.

Schematic Diagram

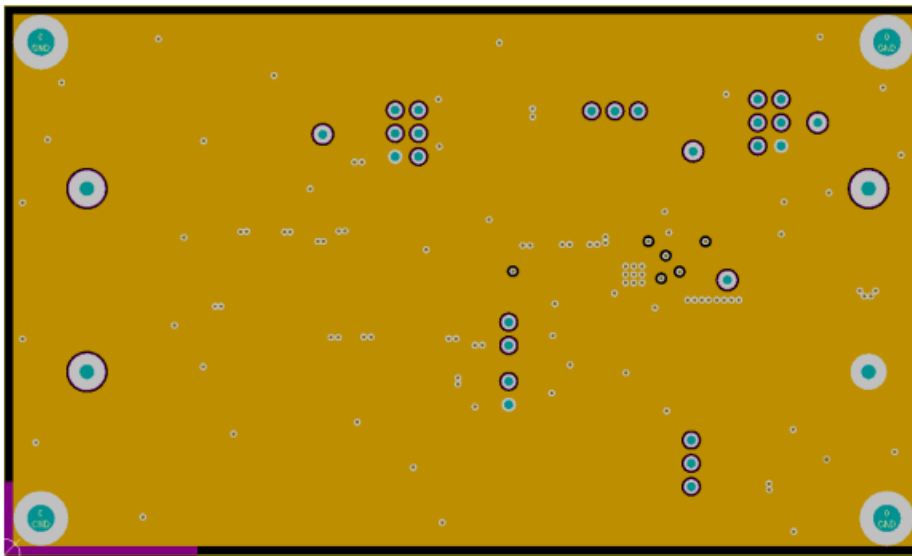


Board Layers (top view)

Top Layer:

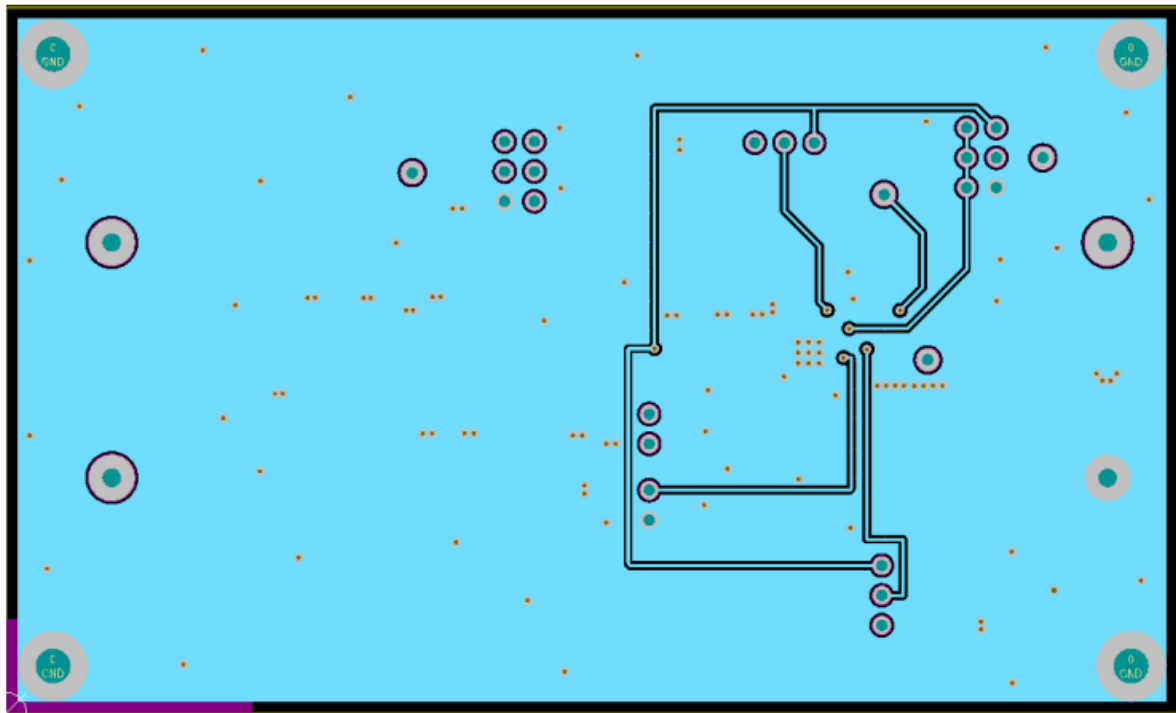


Mid Layer 1:

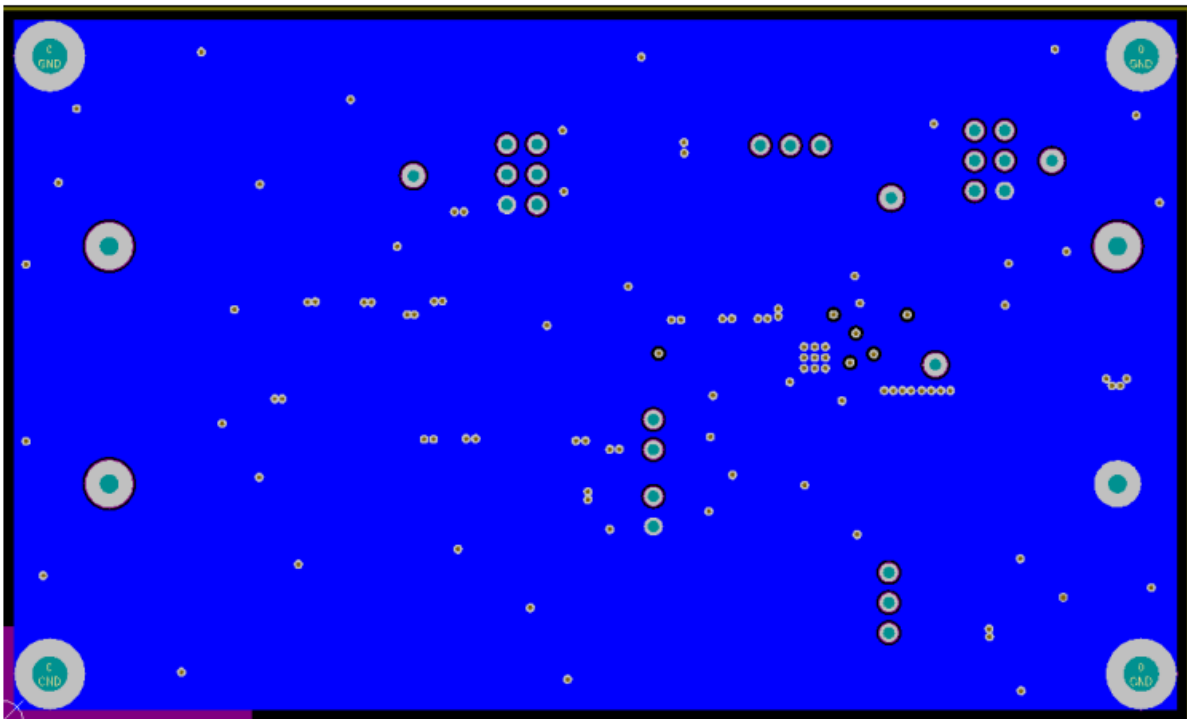


Board Layers (top view) (continued)

Mid Layer 2:



Bottom Layer:



BILL OF MATERIALS for DDB103R3 EVM

Quantity	Idents	Description	Footprint
1	U2	AP66x00Q/AP64x03Q	U-QFN4040-16/SWP
1	U1	AP74700Q	SOT26
1	Q1	DMTH6016LFVWQ	PowerDI3333-8
1	D1	SMF4Lxx(C)AQ	DO-219AA

1	C1	10uF X7R Ceramic SMD Capacitor	1210
1	C2	1uF X7R Ceramic SMD Capacitor	1210
2	C9, C10	22uF X7R Ceramic Capacitor	1210
1	C12	100nF X7R Ceramic Capacitor	0805
1	C4	100pF X7R Ceramic Capacitor	0805
1	C17	22nF X7R Ceramic Capacitor	0805
2	C22, C23	47nF X7R Ceramic Capacitor	0603
1	C6	2.2uF X7R Ceramic SMD Capacitor	0805
3	C7, C13, C16	1uF X7R Ceramic SMD Capacitor	0805
3	C5, C21, C20	1uF X7R Ceramic SMD Capacitor	0603C
4	C8, C1, C24, C18	100nF X7R Ceramic SMD Capacitor	0603C
4	ExtClk, ExtSupply, ExtSupply1	1 pin header	0.1" 1W
2	J1, J2	2W header	0.1" 2W
2	J3, J5	2W header	0.1" 2W
2	J4, J6	6W header	0.1" 6W
1	L1	Common-mode Choke, BOURNS SRF7035A-102Y	7mm x 6mm x 3.5mm
1	L2	Coilcraft XGL5050-682MEC, 6.8uH, 6.2A	5050
1	L3	Coilcraft XGL5030-682MEC, 6.8uH, 5.5A (500 kHz) Coilcraft XGL4030-122MEC, 1.2uH, 9A (2.5 MHz)	5030/4030
5	R1, R2, R3, R4, R5	Resistor	0805
4	Vin, Vout, PGND, GND	Test eyelets	1.6mm test eyelets

IMPORTANT NOTICE

1. DIODES INCORPORATED (Diodes) AND ITS SUBSIDIARIES MAKE NO WARRANTY OF ANY KIND, EXPRESS OR IMPLIED, WITH REGARDS TO ANY INFORMATION CONTAINED IN THIS DOCUMENT, INCLUDING, BUT NOT LIMITED TO, THE IMPLIED WARRANTIES OF MERCHANTABILITY, FITNESS FOR A PARTICULAR PURPOSE OR NON-INFRINGEMENT OF THIRD PARTY INTELLECTUAL PROPERTY RIGHTS (AND THEIR EQUIVALENTS UNDER THE LAWS OF ANY JURISDICTION).
2. The information contained herein is for informational purposes only and is provided only to illustrate the operation of Diodes' products described herein and application examples. Diodes does not assume any liability arising out of the application or use of this document or any product described herein. This document is intended for skilled and technically trained engineering customers and users who design with Diodes' products. Diodes' products may be used to facilitate safety-related applications; however, in all instances customers and users are responsible for (a) selecting the appropriate Diodes products for their applications, (b) evaluating the suitability of Diodes' products for their intended applications, (c) ensuring their applications, which incorporate Diodes' products, comply the applicable legal and regulatory requirements as well as safety and functional-safety related standards, and (d) ensuring they design with appropriate safeguards (including testing, validation, quality control techniques, redundancy, malfunction prevention, and appropriate treatment for aging degradation) to minimize the risks associated with their applications.
3. Diodes assumes no liability for any application-related information, support, assistance or feedback that may be provided by Diodes from time to time. Any customer or user of this document or products described herein will assume all risks and liabilities associated with such use, and will hold Diodes and all companies whose products are represented herein or on Diodes' websites, harmless against all damages and liabilities.
4. Products described herein may be covered by one or more United States, international or foreign patents and pending patent applications. Product names and markings noted herein may also be covered by one or more United States, international or foreign trademarks and trademark applications. Diodes does not convey any license under any of its intellectual property rights or the rights of any third parties (including third parties whose products and services may be described in this document or on Diodes' website) under this document.
5. Diodes' products are provided subject to Diodes' Standard Terms and Conditions of Sale (<https://www.diodes.com/about/company/terms-and-conditions/terms-and-conditions-of-sales/>) or other applicable terms. This document does not alter or expand the applicable warranties provided by Diodes. Diodes does not warrant or accept any liability whatsoever in respect of any products purchased through unauthorized sales channels.
6. Diodes' products and technology may not be used for or incorporated into any products or systems whose manufacture, use or sale is prohibited under any applicable laws and regulations. Should customers or users use Diodes' products in contravention of any applicable laws or regulations, or for any unintended or unauthorized application, customers and users will (a) be solely responsible for any damages, losses or penalties arising in connection therewith or as a result thereof, and (b) indemnify and hold Diodes and its representatives and agents harmless against any and all claims, damages, expenses, and attorney fees arising out of, directly or indirectly, any claim relating to any noncompliance with the applicable laws and regulations, as well as any unintended or unauthorized application.
7. While efforts have been made to ensure the information contained in this document is accurate, complete, and current, it may contain technical inaccuracies, omissions, and typographical errors. Diodes does not warrant that information contained in this document is error-free and Diodes is under no obligation to update or otherwise correct this information. Notwithstanding the foregoing, Diodes reserves the right to make

modifications, enhancements, improvements, corrections or other changes without further notice to this document and any product described herein. This document is written in English but may be translated into multiple languages for reference. Only the English version of this document is the final and determinative format released by Diodes.

8. Any unauthorized copying, modification, distribution, transmission, display or other use of this document (or any portion thereof) is prohibited. Diodes assumes no responsibility for any losses incurred by the customers or users or any third parties arising from any such unauthorized use.
9. This Notice may be periodically updated with the most recent version available at <https://www.diodes.com/about/company/terms-and-conditions/important-notice>

The Diodes logo is a registered trademark of Diodes Incorporated in the United States and other countries. All other trademarks are the property of their respective owners. 2024 Diodes Incorporated. All Rights Reserved. www.diodes.com

- DDB103R3 EVB User Guide Rev. 1
- 08/02/2024 www.Diodes.com

Specifications

- **Input Voltage:** DC
- **Output Voltage:** 5V
- **Switching Frequency:** Configurable to 500 kHz or 2.5 MHz
- **Soft Start:** Internal or External

FAQ

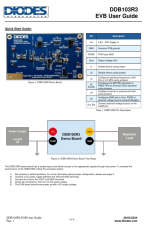
Q: What should I do if the board does not power up with a 5V output voltage?

A: Check the jumper configurations and ensure all connections are correct. Verify the input voltage and load connections as well.

Q: Can I change the switching frequency of the device?

A: Yes, you can configure the switching frequency to either 500 kHz or 2.5 MHz using the appropriate jumpers on the board.

Documents / Resources

	<p>DIODES DDB103R3 Ideal Diode Controller [pdf] User Guide DDB103R3, AP74700Q, DDB103R3 Ideal Diode Controller, DDB103R3, Ideal Diode Controller, Diode Controller, Controller</p>
---	--

References

- [Diodes Incorporated - Analog and Discrete Power Solutions](#)

- [User Manual](#)

[Manuals+](#), [Privacy Policy](#)

This website is an independent publication and is neither affiliated with nor endorsed by any of the trademark owners. The "Bluetooth®" word mark and logos are registered trademarks owned by Bluetooth SIG, Inc. The "Wi-Fi®" word mark and logos are registered trademarks owned by the Wi-Fi Alliance. Any use of these marks on this website does not imply any affiliation with or endorsement.