

DiO
connected home
**55858 On Off
Lighting Module
and Wireless
Switch**



DiO 55858 On Off Lighting Module and Wireless Switch Instruction Manual

[Home](#) » [DiO](#) » DiO 55858 On Off Lighting Module and Wireless Switch Instruction Manual 

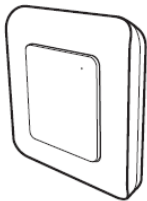
Contents

- [1 DiO 55858 On Off Lighting Module and Wireless Switch](#)
- [2 What In The Box](#)
- [3 Installing the lighting module](#)
- [4 Install the wireless switch](#)
- [5 Link the module to a remote control or a DiO 1.0 sensor](#)
- [6 Add the module to the application via Bluetooth](#)
- [7 Add the module to the application And Reset](#)
- [8 Operation](#)
- [9 Problem-solving](#)
- [10 Technical Data](#)
- [11 Complete your installation](#)
- [12 Precautions](#)
- [13 More Information](#)
- [14 Documents / Resources](#)
 - [14.1 References](#)

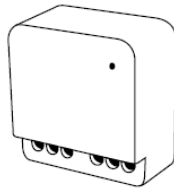




What In The Box



2x 54717



1x 55855



2x CR2032-3V



2x Adhesives

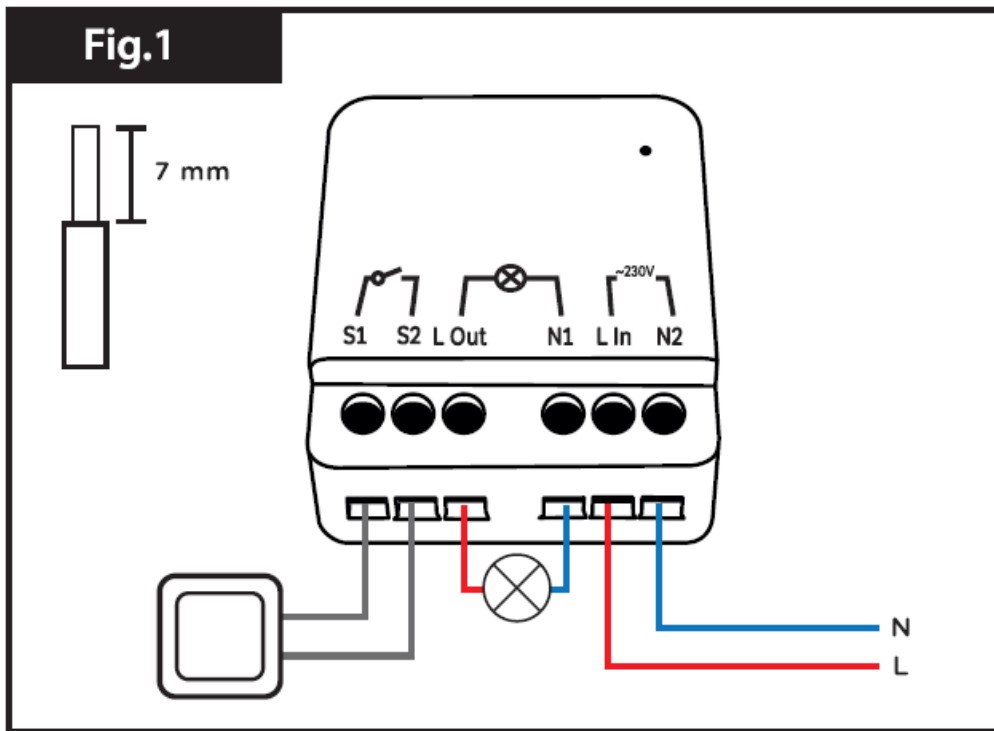


1x

Installing the lighting module

This product must be installed in accordance with installation rules and preferably by a qualified electrician. Improper installation and/or use may result in the risk of electric shock or fire. Switch off the power supply before carrying out any work. !!!

Connect the module behind a mechanical switch (push button or toggle)



- Remove your mechanical switch.
- Strip the wires of about 7 mm to have a good contact surface.
- Connect the AC 230V phase (brown or red) to the Lin terminal of the module and the neutral wire (blue) from the electrical panel to terminal N2.
- Connect the cable from the bulb (brown or red) to the LOut terminal of the module and the neutral (blue) to the bulb at terminal N1.
- Connect your switch to terminal S1 and S2.

Note: If your installation does not include the neutral conductor behind the switch, you must install the module at the lamp.

Connect the module to the lamp

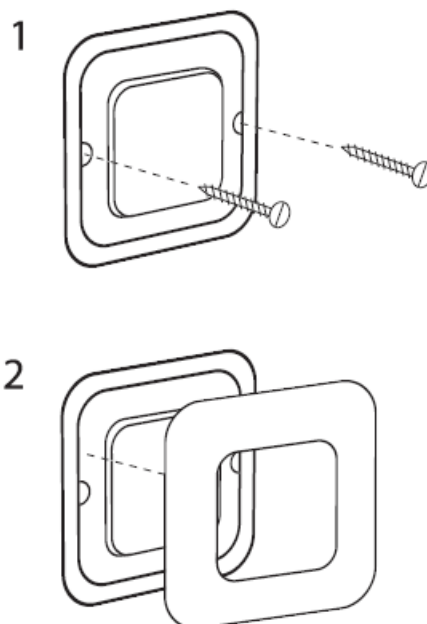
Fig.2

The diagram shows a relay module with a 7 mm dimension indicated. The module has two sets of relays, each with a switch (S1, S2), a load (L Out), and a coil (N1, N2). The module is connected to a 230V AC source (L, N) and a 24V DC source (L, N). The wiring diagram shows the module connected to a 24V DC source (L, N) and a 230V AC source (L, N). The module is connected to a 24V DC source (L, N) and a 230V AC source (L, N).

- ## Install the wireless switch

- ## Installing the unit

You have two options:

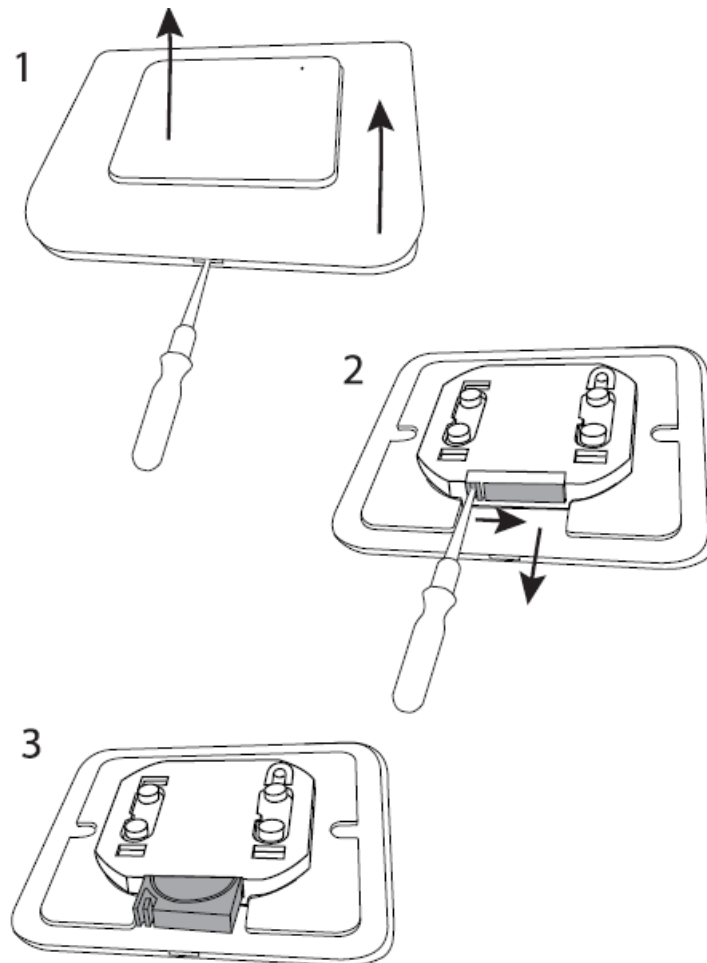


- Use the supplied double-sided adhesives to attach the wireless switch on the wall, making sure the LED on the switch is facing up.
- Use small screws (not included). For this option, remove the wireless switch frame and place the 2 screws into the slot, making sure the LED is at the top of the switch. Then replace the frame.

Changing the battery

The switch LED will become dim when battery is low.

To change the battery:

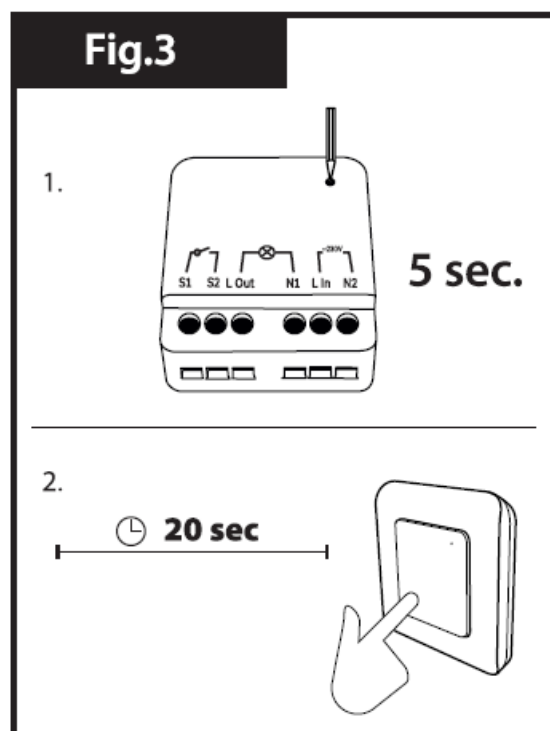


1. Remove the front frame and faceplate of the switch
2. Using a small flat screwdriver, remove the battery compartment by pressing the small notch inwards while pulling downwards.
3. Replace the old battery with a new CR2032 – 3V type, making sure to place it with the + side facing up.
4. Replace the battery compartment, faceplate and the front frame until you hear a click.

Link the module to a remote control or a DiO 1.0 sensor

- The DiO Light Module is compatible with all Dio 1.0 controls: remote controls, switches and wireless sensors.

Connecting the DiO light module to a DiO 1.0 controller



1. Connect the module and bring the DiO 1.0 remote control close to the light module.
2. Press the learning button on the DiO Module for 5 seconds, the LED starts to flash slowly.
3. Within 20 seconds, press the 'ON' button on the remote control, wireless switch or DiO 1.0 sensor, the LED on the module flashes rapidly for 1 sec to confirm the association.

Warning: If you do not press the 'ON' button on your control unit within 20 seconds, the module will exit learning mode; you must go back to point 4.1 for the association.

The DiO Module can be linked to up to 6 different DiO commands. If the memory is full, you will not be able to install a 7th command, see section 4.2 to delete a command.

Deleting a DiO 1.0 command

- Bring the DiO 1.0 Remote Control close to the Light Module.
- Press the learning button on the DiO Module for 5 seconds, the LED starts to flash slowly.
- Press the 'OFF' button on the DiO 1.0 remote control to be deleted, the LED on the module will flash rapidly for 1 sec to confirm

Add the module to the application via Bluetooth

Create your DiO One account

- Download the free DiO One app from the iOS App Store or Google Play for Android.
- Create an account by following the instructions on the app.

Note: Also compatible with the "My Chacon" app.

Connect the lighting module to your smartphone

- Make sure the DiO Module is within range of your smartphone and that Bluetooth is enabled on your

smartphone.

- In the app, select “My Devices” and press “+”.
- Select “Home automation” and then “DiO lighting module”.
- Follow the installation assistant on the application.

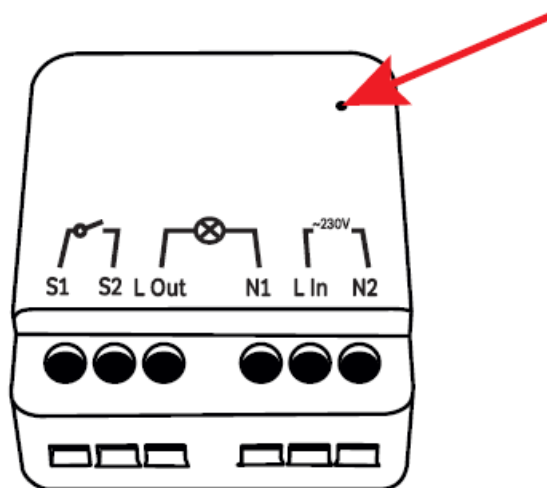
Add the module to the application And Reset

Add the module to the application via a Zigbee 3.0 controller

- You can link your lighting module to a Zigbee 3.0 home automation system, to integrate it into your existing Zigbee 3.0 ecosystem.
- Press the module’s learning button for 5 seconds, the LED will start flashing slowly. Then, follow the instructions of your Zigbee central controller to add the module.

Reset

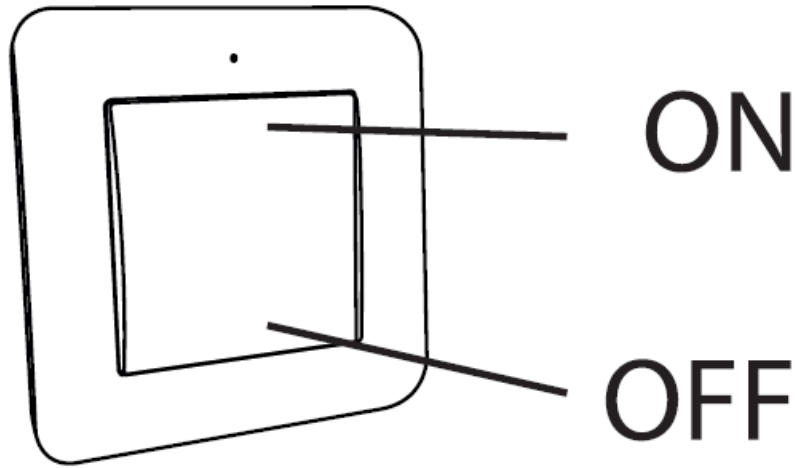
To restore the lighting module to its factory settings:



- Press the central button for 12 seconds. The LED on the module flashes rapidly for 2 seconds to confirm the reset.

Operation

With the DiO remote control/switch:



- Press the “ON” (“OFF”) button on your DiO control to turn the lights on/off.

With your smartphone, via DiO One:

- Turn on/off (make sure the module is within Bluetooth range of your smartphone).
- Create a programmable timer: set your lights to turn on or off by the minute.
- Presence simulation: select the duration of absence and the periods of operation, the switch opens or closes randomly to protect your home.

Note: Programs created via your smartphone will always be active, even if your smartphone’s Bluetooth is not in range.

Problem-solving

- The light does not turn on/off with the DiO switch or remote control:
 - Check that your module is well connected to the electrical current.
 - Check the polarity and/or the exhaustion of the batteries of your control.
 - Check that the memory of your module is not full, the module can be linked to up to 6 DiO commands (remote control, switch and/or detector).
 - Make sure the switch or remote control is within reach of the module.
 - If your module does not respond, you can do a reboot by pressing with a paper clip or needle on the small pin at the back of the module.
- The wireless module or switch does not appear in the application interface:
 - Check that the module is within range of your smartphone and that Bluetooth is enabled on your smartphone.

Important: A minimum distance of 1-2m is required between two DiO receivers (module and/or outlet). The range between the module and the DiO switch may be reduced by thick walls or an existing wireless environment.

Technical Data

55855 – lighting module

- Protocol and frequency

- 433,92 MHz by DiO
- Zigbee 3.0 – 2,4Ghz
- Bluetooth Low Energy 5.0
- Maximum power: 0,7 mW ERP
- Range with DiO 1.0 control: 50m (free field)
- Max. 6 associated DiO 1.0 transmitters
- Operating temperature: 0° à + 35°C
- Power supply: 220 – 240 V – 50Hz
- Max.: 1000W
- Dimensions: 43 x 41 x 22 mm



Indoor use (IP20), do not use in humid environments.



Micro-disconnection

Indoor use (IP20), do not use in a wet environment.

54717 – wireless switch

- Protocol: DiO 1.0
- Frequency: 433.92 MHz
- Max transmitted radio frequency power: <20 mW
- Operating temperature: -10 to 35°C
- Transmission range: 50 m (in free field)
- Lithium battery: CR2032 3V (included)
- Number of channels: 1
- Dimensions: 86 x 85 x 13 mm



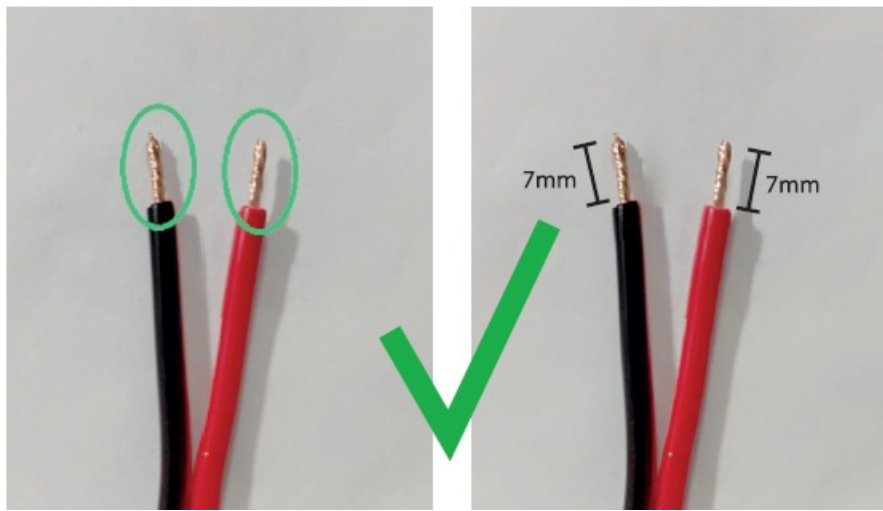
Indoor use (IP20), do not use in a wet environment.

Complete your installation

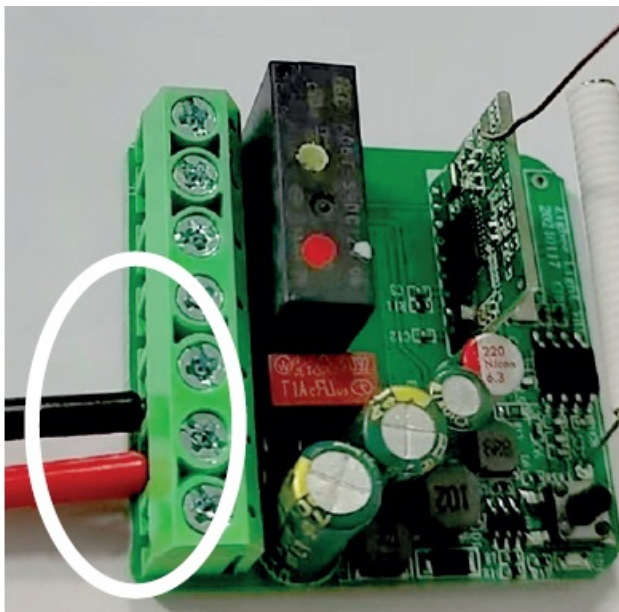
- Complete your installation with DiO solutions to control your lighting, your roller shutters, your garden or even visualize what is happening at home with video surveillance.
- Easy, qualitative, scalable and economical, discover all DiO-connected home solutions on www.diohome.com.

Precautions

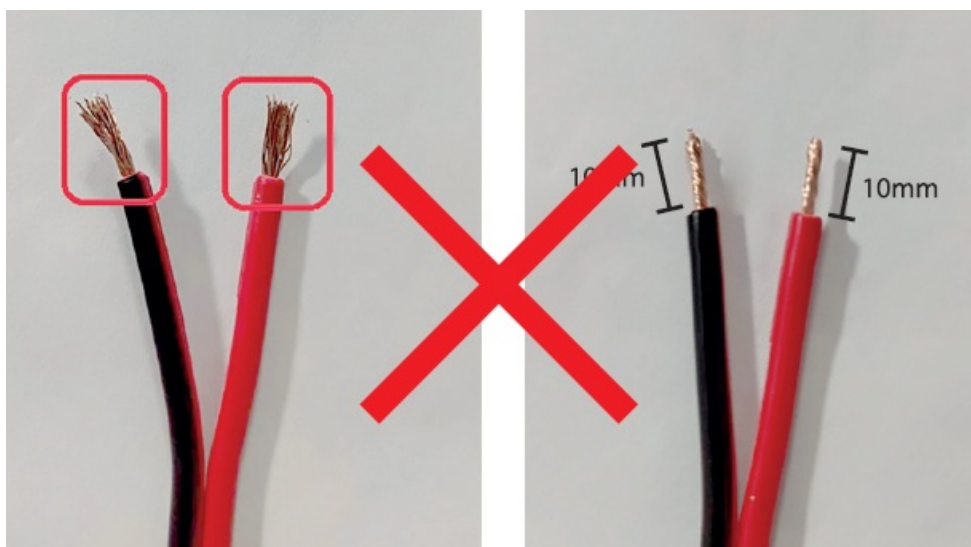
Correct wire stripping



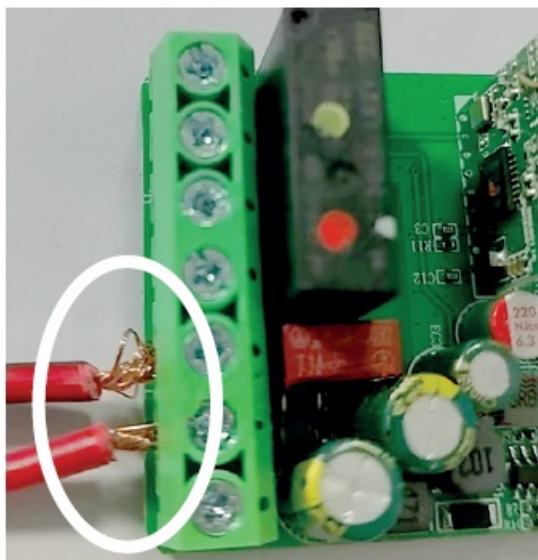
Correct wire connection



Wrong wire stripping



Incorrect wire connection



More Information

Recyclage



Don't throw batteries or out of order products with the household waste (garbage). The dangerous substances that they are likely to include may harm health or the environment. Make your retailer take back these products or use the selective collect of garbage proposed by your city.

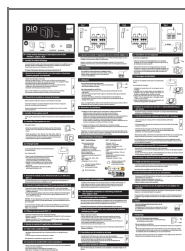


Hereby, Chacon declares that the radio equipment type 55855 and 54717 are in compliance with Directive 2014/53/EU.

The full text of the EU declaration of conformity is available at the following internet address:

www.chacon.com/conformity

Documents / Resources



[DiO 55858 On Off Lighting Module and Wireless Switch](#) [pdf] Instruction Manual
55858, 240926 v1.7, 55858 On Off Lighting Module and Wireless Switch, 55858, On Off Lightin
g Module and Wireless Switch, Lighting Module and Wireless Switch, Wireless Switch, Switch

References

- [User Manual](#)

[Manuals+](#), [Privacy Policy](#)

This website is an independent publication and is neither affiliated with nor endorsed by any of the trademark owners. The "Bluetooth®" word mark and logos are registered trademarks owned by Bluetooth SIG, Inc. The "Wi-Fi®" word mark and logos are registered trademarks owned by the Wi-Fi Alliance. Any use of these marks on this website does not imply any affiliation with or endorsement.