



DiO 55854 Shutter Module User Manual

[Home](#) » [DiO](#) » **DiO 55854 Shutter Module User Manual** 

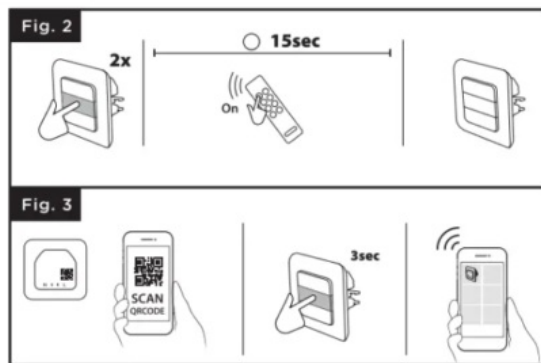
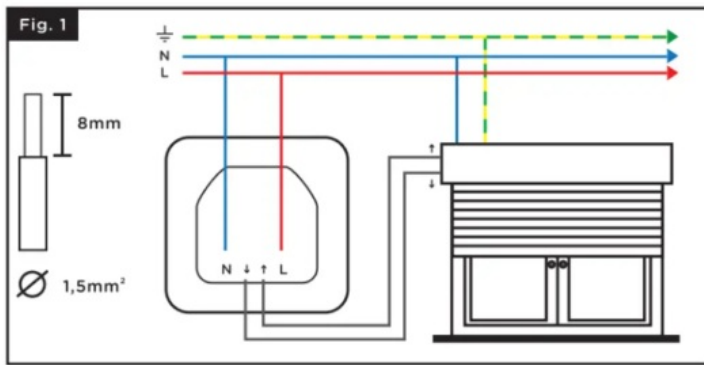
Contents

- [1 DiO 55854 Shutter Module User Manual](#)
- [2 Video tutorial](#)
- [3 Install the shutter switch](#)
- [4 Linking the switch with a control Dio 1.0](#)
- [5 Add the switch into the application](#)
- [6 Reset the switch](#)
- [7 Use](#)
- [8 Problem-solving](#)
- [9 Technical specifications](#)
- [10 Supplementing your installation](#)
- [11 Read More About This Manual & Download PDF:](#)
- [12 Documents / Resources](#)
 - [12.1 References](#)

DiO 55854 Shutter Module User Manual



connected home
WiFi Shutter Switch & 433MHz
User Manual



Register your warranty

To register your warranty, fill in the online form at www.chacon.com/warranty

Video tutorial

We have produced a series of video tutorials to make it easier to understand and install our solutions. You can see them on our [Youtube.com/c/dio-connected-home](https://www.youtube.com/c/dio-connected-home) channel, under Playlists.

Install the shutter switch

This product must be installed in accordance with the installation rules and preferably by a qualified electrician. Incorrect installation and/or incorrect use may cause a risk of electric shock or fire.

Cut the power supply before any intervention.

Strip around 8mm cables to have a good contact surface.

Fig 1.

1. Connect L (brown or red) to terminal L of the module
2. Connect N (blue) to terminal N of the module
3. Connect the up and down by referring to your engine manual.

Linking the switch with a control Dio 1.0

This product is compatible with all dio 1.0 devices: remote control, switches, and wireless detectors.

Press the central button twice quickly, and the LED starts to flash slowly in light green.

Within 15 seconds, press the 'ON' button on the remote control, and the switch LED flashes light green quickly to confirm the association.

Warning: If you do not press the 'ON' button on your control within 15 seconds, the switch will exit learning mode; you must start from point 1 for the association.

The switch can be linked up to 6 different DiO commands. If the memory is full, you will not be able to install the 7th command, see paragraph 2.1 to delete an ordered

2.1 Deleting the link with the DiO control device

Fig.2

If you want to delete a control device from the switch :

- Press the central button of the switch twice quickly, the LED will start to flash slowly in light green.
- Press the 'OFF' button of the DiO control to be deleted, the LED flashes light green rapidly to confirm the deletion.

To delete all registered DiO control devices :

- Press for 7 seconds the pairing button of the switch, until the LED indicator turns purple, then release.

Add the switch into the application

3.1 Create your DiO One account

- Scan the QR code to download the free DiO One application, available on the iOS App Store or on Android Google Play.
- Create your account following the instructions in the application.

3.2 Connect the switch to the Wi-Fi network

- In the application, select "My devices", click "+" and then " Install the Connect Wi-Fi device"
- Select the "DiO Connect shutter switch".
- Power up the DiO switch and press the switch central button for 3 seconds, the LED indicator flashes quickly red.
- Within 3 minutes, click "Install the Connect Wi-Fi device" in the app.
- Follow the installation wizard in the application.

Warning: In case the Wi-Fi network or password is changed, press the pairing button for 3 seconds, and in the app press long in the device icon. Then follow the instruction in the application to update the Wi-Fi.

3.3 Disable Wi-Fi from the switch

- Press 3 secs on the central button, release, and click twice to disable the switch Wi-Fi.
- When Wi-Fi is off, the switch LED will appear purple. Press again 3 seconds, release and double click to turn on the Wi-Fi and to control your shutter with your smartphone

Note: The timer created through your smartphone will still be active.

3.4 Switch light status

- Steady red: switch is not connected to the Wi-Fi network
- Flashing blue: switch is connected to the Wi-Fi
- Steady blue: switch is connected to the Cloud, and turns to white after a few seconds
- Steady white: switch on (it can be switched off through the app — discreet mode)

- Steady purple: Wi-Fi disabled
- Flashing green: update download

3.5 Connect with your vocal assistant

- Activate the service or the “One 4 All” skill in your voice assistant.
- Enter your DiO One account information.
- Your devices will automatically appear in your assistant app.

Reset the switch

Press 12 seconds for the pairing button of the switch, until the LED flashes light blue, then release. The LED will blink red twice to confirm the reset.

Use

With the remote control / DiO switch:

Press the “ON” (“OFF”) button on your DiO control to open (close) the electric shutter. Press a second time corresponding to the first press to stop the shutter

On the switch:

- Up / down the shutter by pressing the corresponding button once.
- Press the central button once to stop.

With your smartphone, via DiO One:

- Open/close from anywhere
- Create a programmable timer: set to the nearest minute with a precise opening (for example 30%), select the day (s) of the week, single or repeated timer.
- Create a countdown: the shutter closes automatically after the allotted time.
- Presence simulation: select the duration of absence and the switch-on periods, the switch will open and close randomly to protect your home.

Problem-solving

- The shutter does not open with a DiO control or detector:
Check that your switch is properly connected to the electric current.
Check the polarity and/or the exhaustion of the batteries in your order.
Check that the stops of your shutter are correctly adjusted.
Check that the memory of your switch is not full, the switch may be linked to a maximum of 6 DiO commands (remote control, switch, and/or detector), see paragraph 2.1 to place an order.
Make sure you are using a command using the DiO 1.0 protocol.
- The switch does not appear on the app interface:
Check the light state of the switch:
Red LED: check the status of the Wi-Fi router.
Flashing blue LED: check internet access.

Ensure that the Wi-Fi and Internet connection is functional and that the network is within range of the switch.
Make sure the Wi-Fi is on a 2.4GHz band (does not work in 5GHz).
During configuration, your smartphone must be on the same Wi-Fi network as the switch.
The switch can only be added to an account. A single DiO One account can be used by all members of the same household.

Important: A minimum distance of 1-2 m is necessary between two DiO receivers (module, plug, and/or bulb). The range between the switch and the DiO device may be reduced by the thickness of the walls or an existing wireless environment.

Technical specifications

Protocol: 433,92 MHz by DiO

Wi-Fi frequency: 2,4GHz

EIRP: max. 0,7 mW

Transmission range with DiO devices: 50m (in free field)

Max. 6 associated DiO transmitters

Operating temperature: 0 a 35°C

Power supply: 220 – 240 V – 50Hz

Max.: 2 X 600W

Dimensions : 85 x 85 x 37 mm



Indoor use (IP20). Do not use it in a damp environment



Alternating current

Supplementing your installation

Supplement your installation with DiO solutions to control your heating, lighting, roller shutters, or garden, or use video surveillance to keep an eye on what is happening at home. Easy, high-quality, scalable, and economical... learn about all of the DiO Connected Home solutions at www.chacon.com



Recycling

In accordance with European WEEE directives (2002/96/EC) and directives concerning accumulators (2006/66/EC), any electrical or electronic device or accumulator must be collected separately by a local system specializing in the collection of such waste. Do not dispose of these products with ordinary waste. Check the regulations in force. The logo shaped like a waste bin indicates that this product must not be disposed of with household waste in any EU country. To prevent any risk to the environment or human health due to uncontrolled scrapping, recycle the product in a responsible manner. This will promote the sustainable use of material resources. To return your used device, use the return and collection systems, or contact the original dealer. The dealer will recycle it in accordance with regulatory provisions.




CHACON declares that device Rev-Shutter is conform with the requirements and provisions of Directive RED 2014/53/EU.

The complete text of the EU declaration of conformity is available at the following Internet address: www.chacon.com/en/conformity

Read More About This Manual & Download PDF:

Documents / Resources

	DiO 55854 Shutter Module [pdf] User Manual 55854, 55854 Shutter Module, 55854, Shutter Module, Module
---	--

References

- [User Manual](#)

[Manuals+](#), [Privacy Policy](#)

This website is an independent publication and is neither affiliated with nor endorsed by any of the trademark owners. The "Bluetooth®" word mark and logos are registered trademarks owned by Bluetooth SIG, Inc. The "Wi-Fi®" word mark and logos are registered trademarks owned by the Wi-Fi Alliance. Any use of these marks on this website does not imply any affiliation with or endorsement.