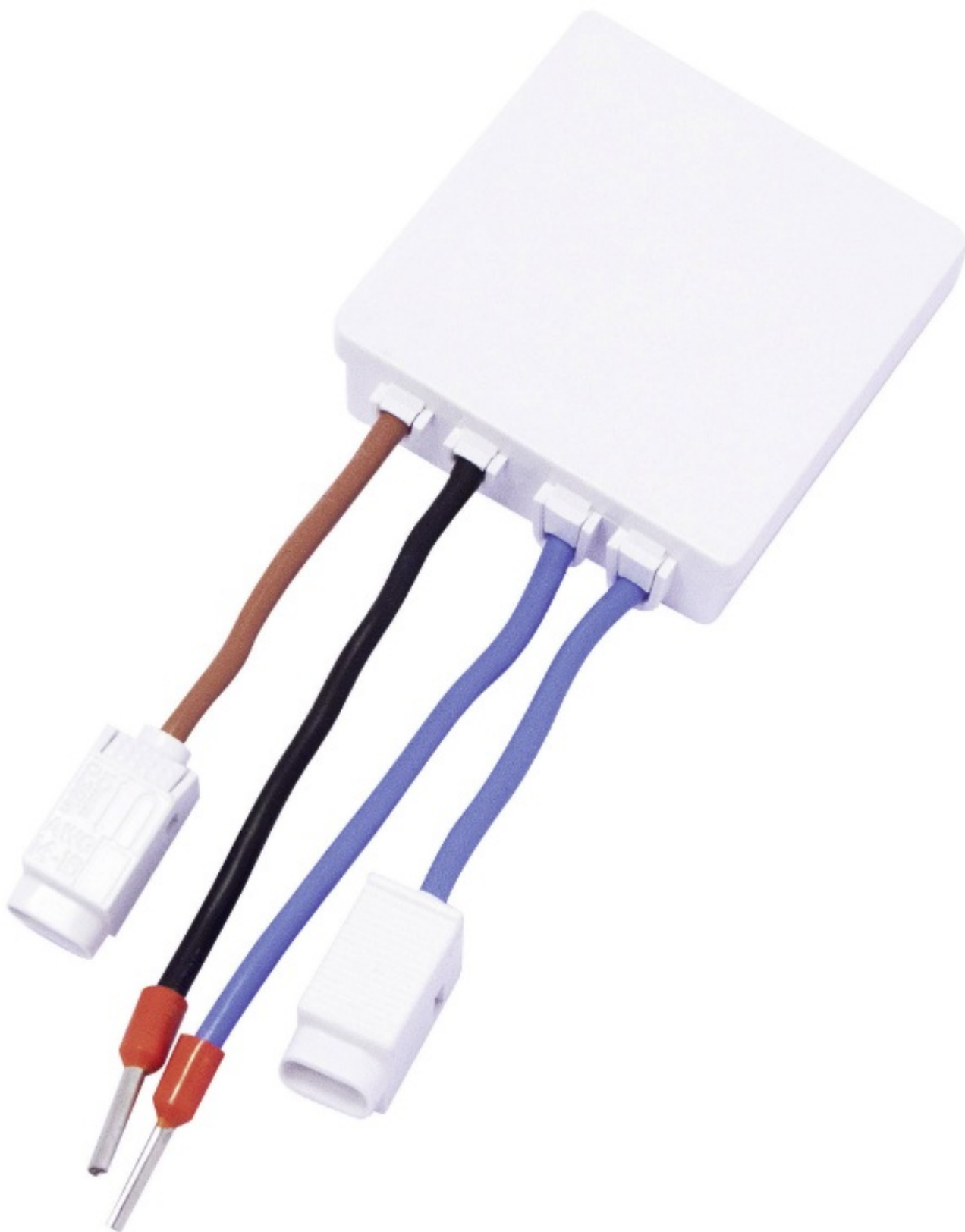


DiO 54790 Micro Module for Wall Socket Instruction Manual

[Home](#) » [DiO](#) » DiO 54790 Micro Module for Wall Socket Instruction Manual 

DiO 54790 Micro Module for Wall Socket



1x 54790



1x Manual

Contents

- 1 Register your warranty
- 2 Video tutorial
- 3 Connect the micro module behind your wall socket
- 4 Linking the micro module with a DiO 1.0 device
 - 4.1 Linking the micro module with a remote control, switch or DiO 1.0 detector
 - 4.2 Linking the module to the DiO hub
- 5 Deleting a DiO 1.0 device
- 6 Reset
- 7 Use
- 8 Troubleshooting
- 9 Technical specifications
- 10 Supplementing your installation
- 11 Documents / Resources
- 12 Related Posts

Register your warranty

To register your warranty, fill in the online form at www.getDiO.com/warranty

Video tutorial

We have produced a series of video tutorials to make it easier to understand and install our solutions. You can see them on our Youtube.com/c/dio-connected-home channel, under Playlists. You can also view them through our website www.getDiO.com in the Support tab.

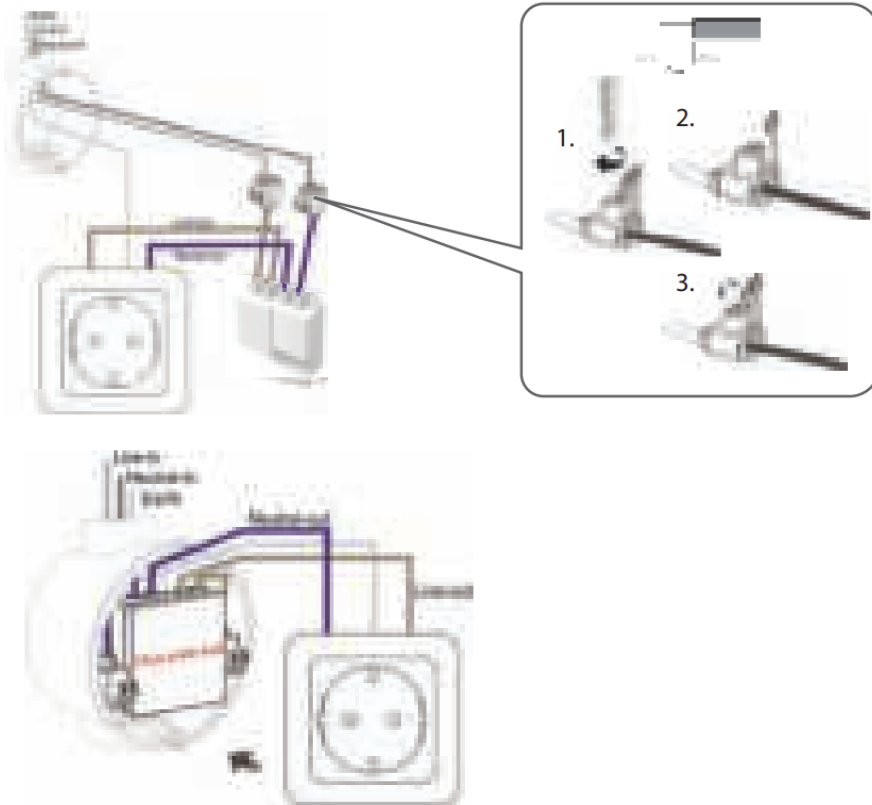
!! Warning!!

Disconnect the power supply before carrying out any work.
Please contact your electrician if you have any doubts about your installation.

You can use non-dimmable incandescent, halogen, LED or ECO bulbs.

Connect the micro module behind your wall socket

1. Switch off the power supply.
2. Remove the 230V AC live and neutral wires connected to your wall socket (the earth wire must remain connected to the original wall socket).
3. Connect the module to the power supply by connecting the 230V AC live wire (brown/red) to module's terminal 'L' (brown), and the neutral wire (blue) to terminal 'N' (blue wire) as indicated in drawing.
4. Close the plastic caps after screwing the cables, to insulate them from the other metal parts.
5. Connect the module with the wall socket by connecting the 'Lâ' wire and the neutral wire to the wall socket terminals.
6. Insert the module into the recess electrical box, being careful not to cover the front of the module with the cables (to avoid reducing the signal).
7. Reconnect the power supply, the LED of the module will come on for 10 seconds to confirm that the connections are correct.



Linking the micro module with a DiO 1.0 device

This product is compatible with all DiO 1.0 devices: remote control, switches, wireless detectors and the DiO Smart Home main unit for control using your smartphone.

Using the DiO main unit, you can control your home wherever you are through your smartphone and also make your DiO 1.0 micro module compatible with DiO 2.0 devices. For more information, visit www.getDiO.com.

Linking the micro module with a remote control, switch or DiO 1.0 detector



1. Connect your micro module to the power supply.
2. Press the learn button of the DiO 1.0 switch module once; the LED of the micro module begins to flash slowly.
3. Press the 'I' button of the wireless switch or remote control within 12 seconds.
4. The LED stops flashing and the link is completed.

Warning: If you do not press the 'ON' button of the device within 12 seconds, the module will exit learning mode. You must restart the procedure in order to link the device with the module.

The module can be linked with up to 32 different DiO devices. If the memory is full, adding the 33rd device will delete the 1st device added.

Linking the module to the DiO hub

Link your micro module for socket to your DiO Smart Home hub to control your electric device with your smartphone and create your scenarios, for example to turn your radio or radiator on/off at a specific time or simulate someone being at home while you are away. Please refer to your main unit manual to add the module.

Deleting a DiO 1.0 device

If you want to delete a device:

1. Press the learn button of the module device; the LED begins to flash slowly.
2. Press the 'OFF' button of the device within 12 seconds to delete it. The lamp flashes twice to confirm the deletion and the LED of the module stops flashing.

Reset

To delete all registered devices:

1. Press the module learning button for 6 seconds. The LED starts to flash continuously.
2. Release the button and press it again.

Use

On/Off function: Press the 'I' button once to wireless switch on or the 'O' button to switch off.

The micro module can be controlled individually or in conjunction with other receivers (e.g.: a DiO switch closes the shutter linked to a DiO module and at the same time turns on the lamp connected to the lighting module, and the DiO remote control turns the lamp on and off individually).

Troubleshooting

The lighting does not come on when pressing the remote control or switch, or when the detector is activated:

- Check that the micro module has been installed correctly and that it is connected to the power supply.
- Check the polarity of the battery (ies) in the device and/or that they are not depleted.
- Make sure that the device is linked to the module.
- Check that the cables are not in front of the module in the recess electrical box, as this may reduce the power of the radio signal.

Important: A minimum distance of 1-2 m is necessary between two DiO receivers (module, socket and/or bulb). The range between the module and the DiO device may be reduced by the thickness of the walls or an existing wireless environment. Warning: Do not use in a damp location.

Technical specifications

- Protocol: DiO 1.0
- Frequency: 433.92 MHz
- EIRP: 3 mW
- Transmission range: 50 m (in free field)
- Max. 32 associated transmitters

- Operating temperature: 0 to 40°C
- Power supply: 220 – 240 V ~ 50Hz
- Max. power – resistive load: 3500W / 16A
- Terminals suitable for cables from 1.6 mm² to 2.5 mm²
- Dimensions: 48 x 48 x 24.5 mm

Supplementing your installation

Supplement your installation with DiO solutions to control your heating, lighting, roller blinds, or garden, or to use video surveillance to keep an eye on what is happening at home. Easy, high-quality, scalable and economical... learn about all of the DiO Connected Home solutions at www.getDiO.com.



Indoor use (IP20). Do not use in a damp environment.



Electronic on/off micro-switch.

Recycling



■ In accordance with European WEEE directives (2002/96/EC) and directives concerning accumulators (2006/66/EC), any electrical or electronic device or accumulator must be collected separately by a local system specialising in the collection of such waste. Do not dispose of these products with ordinary waste. Check the regulations in force. The logo shaped like a waste bin indicates that this product must not be disposed of with household waste in any EU country. To prevent any risk to the environment or human health due to uncontrolled scrapping, recycle the product in a responsible manner. This will promote the sustainable use of material resources. To return your used device, use the return and collection systems, or contact the original dealer. The dealer will recycle it in accordance with regulatory provisions.



CHACON declares that the device 54790 is conform with the requirements and provisions of Directive RED 2014/53/EU.

The complete text of the EU declaration of conformity is available at the following Internet address:

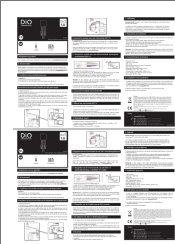
www.chacon.be/en/conformity

Hotline

www.getDiO.com

BE + 32 900 51 100 (Tarif nat. / Nat. tarief : 0,45€/min)



	<p>DiO 54790 Micro Module for Wall Socket [pdf] Instruction Manual</p> <p>54790, Micro Module for Wall Socket, 54790 Micro Module, Micro Module, Module, 54790 Micro Module for Wall Socket, Module for Wall Socket, Wall Socket</p>
---	--