



DiO 54736 On Off Lighting Module and Wireless Switch User Manual

[Home](#) » [DiO](#) » DiO 54736 On Off Lighting Module and Wireless Switch User Manual 

Contents

- [1 DiO 54736 On Off Lighting Module and Wireless Switch](#)
- [2 Installing the lighting module](#)
- [3 Linking the module with a DiO 1.0 device](#)
- [4 Deleting a DiO 1.0 device](#)
- [5 Reset](#)
- [6 Use](#)
- [7 Troubleshooting](#)
- [8 Technical specifications](#)
- [9 Supplementing your installation](#)
- [10 Documents / Resources](#)
- [11 Related Posts](#)



DiO 54736 On Off Lighting Module and Wireless Switch

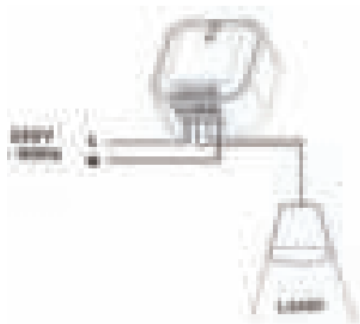


Installing the lighting module

Warning

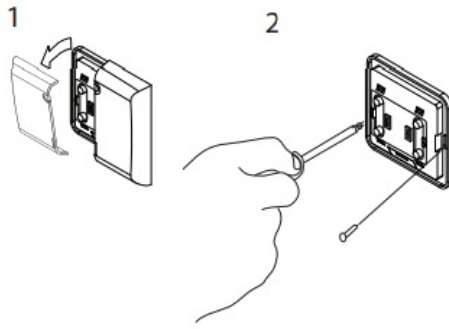
- Disconnect the power supply before carrying out any work.
- Please contact your electrician if you have any doubts about your installation.
- You can use non-dimmable incandescent, halogen, LED, or ECO bulbs.

Connect the module to your lighting

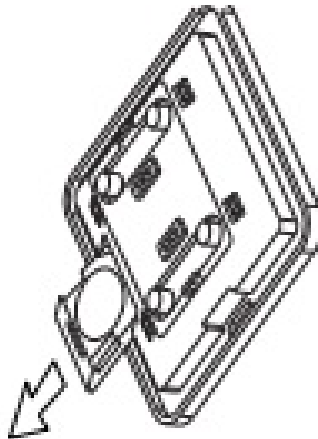


1. Switch off the power supply.
2. Remove the 230V AC live and neutral wires connected to your light.
3. Connect the module to the power supply by connecting the 230V AC live wire (brown/red) to terminal 'L', and the neutral wire (blue) to terminal 'N' outside the module.
4. Connect the live wire going to the light (brown/red) to terminal 'Lâ' and the neutral wire (blue) to terminal 'N' inside the module.
5. Tighten the screws of the 4 terminals of the module and reconnect the power supply.

Installing the wireless switch



1. Remove the front panel of the switch to check that the battery is inserted correctly and to fit the wall-mounting screws.
2. Attach the base to the wall using the screws or the two-sided stickers provided.
3. Attach the panel to the base (note: pay attention to the “UP” position).



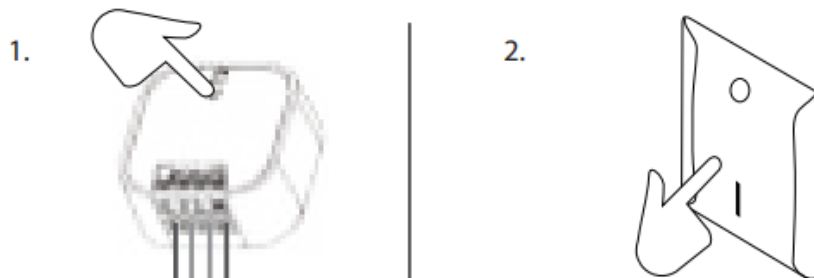
Caution: Danger of explosion if the battery is not replaced correctly. Replace only by the same type or equivalent type.

Linking the module with a DiO 1.0 device

This product is compatible with all DiO 1.0 devices: remote control, switches, wireless detectors, and the DiO Smart Home main unit for control using your smartphone.

Using the DiO main unit, you can control your home wherever you are through your smartphone and also make your DiO 1.0 module compatible with DiO 2.0 devices. For more information, visit www.getDiO.com.

Linking the module with remote control, switch, or DiO 1.0 detector



1. Connect your module to the power supply.
2. Press the learn button of the DiO 1.0 switch module once; the LED of the module begins to flash slowly.
3. Press the ‘I’ button of the wireless switch within 12 seconds.

4. The LED of the module flashes twice to confirm the link and turns off.

Warning: If you do not press the 'ON' button of the device within 12 seconds, the module will exit learning mode. You must restart the procedure in order to link the device with the module.

The module can be linked with up to 32 different audio devices. If the memory is full, adding the 33rd device will delete the 1st device added.

Linking the module to the DiO hub

Link your lighting module to your DiO Smart Home hub unit to control your lighting with your smartphone and create your scenarios, for example to turn your lights on/off at a specific time or simulate someone being at home while you are away. Please refer to your main unit manual to add the module.

Deleting a DiO 1.0 device

If you want to delete a device

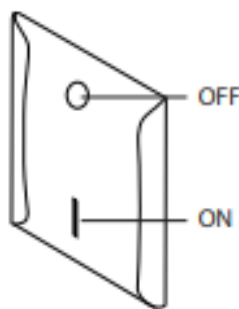
1. Press the learn button of the module device; the LED begins to flash slowly.
2. Press the 'OFF' button of the device within 12 seconds to delete it. The module's LED flashes twice to confirm the deletion.

Reset

To delete all registered devices

1. Press the module learning button for 6 seconds. The LED starts to flash continuously.
2. Release the button and press it again.

Use



- **On/Off function:** Press the 'I' button once to switch on or the 'O' button to switch off.
- The module can be controlled individually or in conjunction with other receivers (e.g.: a DiO switch closes the shutter linked to a DiO module and at the same time turns on the lamp connected to the lighting module, and the DiO remote control turns the lamp on and off individually).

Troubleshooting

- The lighting does not come on when pressing the remote control or switch, or when the detector is activated:

- Check that the module has been installed correctly and that it is connected to the power supply.
- Check the polarity of the battery (ies) in the device and/or that they are not depleted.
- Make sure that the device is linked to the module.

Important: A minimum distance of 1-2 m is necessary between two DiO receivers (module, socket and/or bulb). The range between the module and the DiO device may be reduced by the thickness of the walls or an existing wireless environment. Warning: Do not use in a damp location.

Technical specifications

Lighting module – 54855

- **Protocol:** DiO 1.0
- **Frequency:** 433.92 MHz
- **EIRP :** 3 mW
- **Transmission range:** 50 m (in free field)
- **Max.** 32 associated transmitters
- **Operating temperature:** 0 to 35°C
- **Power supply:** 220 – 240 V ~ 50Hz
- **Max. power :** 1000W / 5A
- **Dimensions:** 48 x 48 x 24.5 mm

Wireless Switch – 54715

- **Frequency:** 433.92 MHz
- **Transmission range:** 50 m (in free field)
- **Number of channels:** 1
- **Lithium battery:** CR2032 3V (included)

Supplementing your installation

Supplement your installation with DiO solutions to control your heating, lighting, roller blinds, or garden, or use video surveillance to keep an eye on what is happening at home. Easy, high-quality, scalable, and economical... learn about all of the DiO Connected Home solutions at www.getDiO.com. Indoor use (IP20). Do not use it in a damp environment. Electronic on/off micro-switch

Recycling

In accordance with European WEEE directives (2002/96/EC) and directives concerning accumulators (2006/66/EC), any electrical or electronic device or accumulator must be collected separately by a local system specialising in the collection of such waste. Do not dispose of these products with ordinary waste. Check the regulations in force. The logo shaped like a waste bin indicates that this product must not be disposed of with household waste in any EU country. To prevent any risk to the environment or human health due to uncontrolled scrapping, recycle the product in a responsible manner. This will promote the sustainable use of material resources. To return your used device, use the return and collection systems, or contact the original dealer. The dealer will recycle it in accordance with regulatory provisions.

CHACON declares that devices 54855 and 54715 conform with the requirements and provisions of Directive RED 2014/53/EU.

The complete text of the EU declaration of conformity is available at the following Internet address:
www.chacon.be – en – conformity

Hotline

- www.getDiO.com
- BE <http://www.getdio.com/contact>
- FR <http://www.getdio.com/contact>
- ES + 34 91 481 63 97 (Precio Comunicación Nacional)
- PT + 351 221 450 250 (Preço Comunicação Nacional)
- IT +39 353 36 71 965 (Al prezzo di una telefonata nazionale)


Register your warranty

To register your warranty, fill in the online form at www.getDiO.com/warranty

Video tutorial

- We have produced a series of video tutorials to make it easier to understand and install our solutions.
- You can see them on our [Youtube.com/c/dio-connected-home](https://www.youtube.com/c/dio-connected-home) channel, under Playlists.
- You can also view them through our website www.getDiO.com in the Support tab.

Documents / Resources

	<p>DiO 54736 On Off Lighting Module and Wireless Switch [pdf] User Manual 54736, On Off Lighting Module and Wireless Switch, 54736 On Off Lighting Module and Wireless Switch, Lighting Module and Wireless Switch, Wireless Switch, Switch</p>
---	---