



Diivoo WT-07W WiFi Hose Timer User Manual

[Home](#) » [Diivoo](#) » Diivoo WT-07W WiFi Hose Timer User Manual 

Diivoo

WT-07W WiFi Hose Timer
User Manual

Thank You!

Need Help?

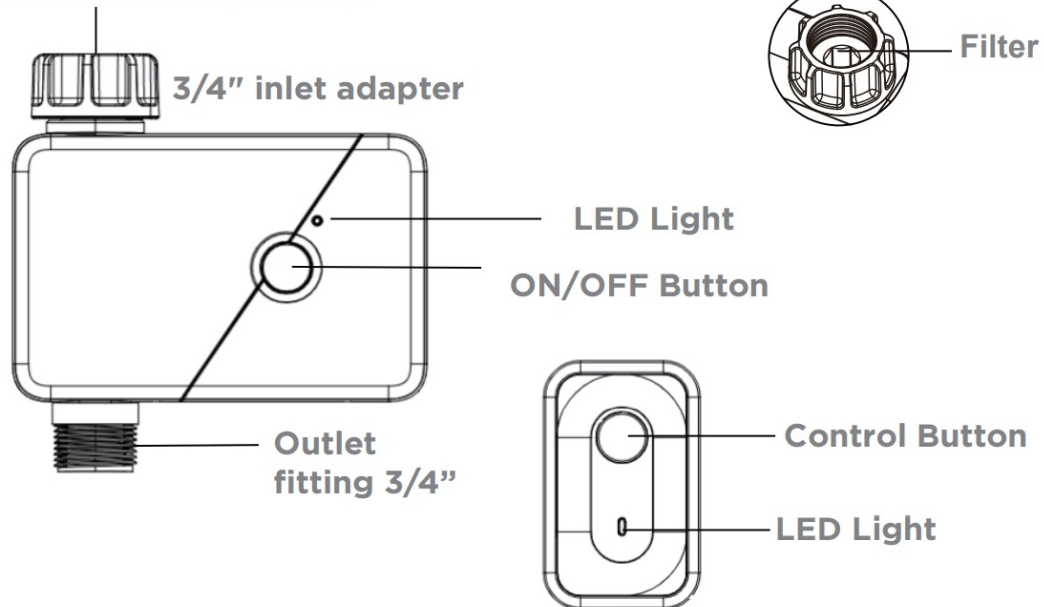
✉ : support@diivoosmart.com

Contents

- [1 Product Appearance](#)
- [2 Product Specifications](#)
- [3 Important Tips](#)
- [4 Mode Of Operation](#)
- [5 FAQ](#)
- [6 Documents / Resources](#)
 - [6.1 References](#)

Product Appearance

Hose Faucet Connection



Packing List

1. Water Timer*1
2. 1/2" inlet adapter*1
3. Threaded connector*1
4. Thread Seal Tape*1
5. Instruction*1

Product Specifications

Water Timer: WT-07W

1. Working Water Pressure: 0.5bar-8bar (7.25 psi-116.03 psi)
2. Working Temperature: 3°C-50°C (37 -122)
3. Waterproof Level: IP54
4. Power Supply: 4 x AA batteries

WiFi hub: WG03

1. Wi-Fi Band: 2.4 GHz only.
2. WiFi hub: up to 196 feet(60m).
3. Input voltage 110V-220V, frequency: 433.92MHZ

Important Tips

1. Please do not use Carbon-zinc or rechargeable batteries.
2. Do not use your timer when the air temperature is below 3°C(37°F), the timers should be removed from the hose faucet and stored indoors to avoid potential frozen damage.
3. When replacing the power unit, please make sure that the water timer is dry.
4. Filter can trap dirt particles, please clean filter regularly and replace if worn to prevent blockage.

5. The valve will shut down automatically when the voltage is lower than 4.3V.
6. The range of connection and control is within 60m of the open area.
7. Do not put the water valve in underground water valve box or in the place where the signal may be blocked.
8. Make sure the device is connected to 2.4GHz Wifi frequency.

Mode Of Operation



IOS

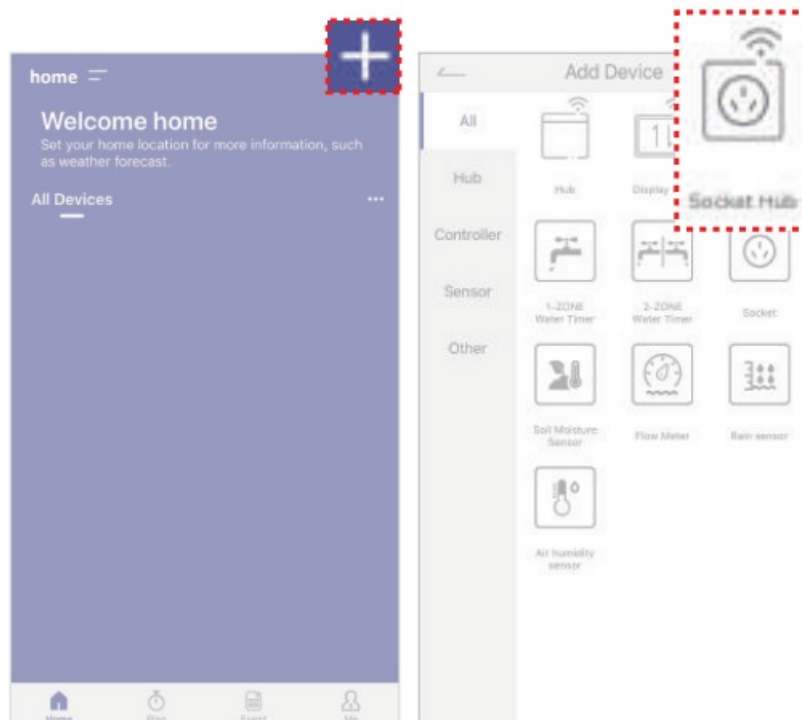
[apps://itunes.apple.com/cn/app/hun-lian-dui-xiang/id1527535459-mt=8](https://itunes.apple.com/cn/app/hun-lian-dui-xiang/id1527535459-mt=8)



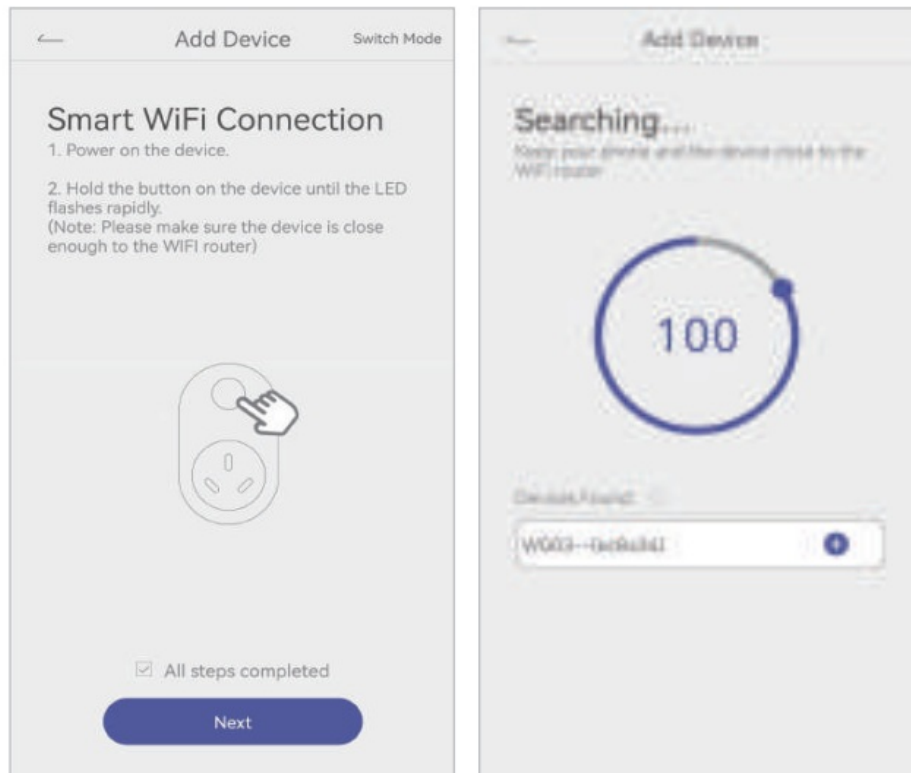
Android

<https://play.google.com/store/apps/details?id=com.baldr.homgar>

1. Download"HOMGAR" app and register.

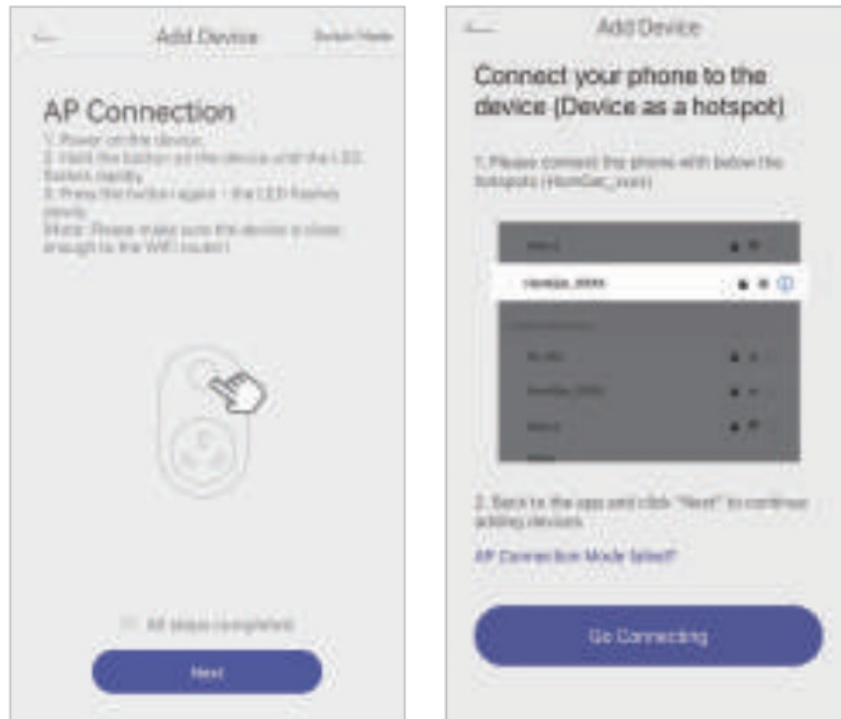
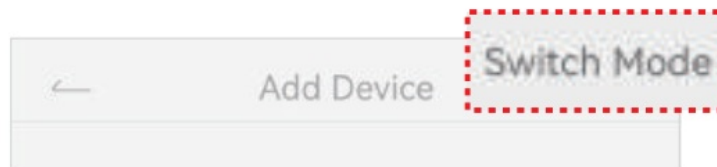


2. Pairing hub 2-1. Connect hub to powersource, press and hold for 5-10 sec until blue light flashes to enter pairing mode.

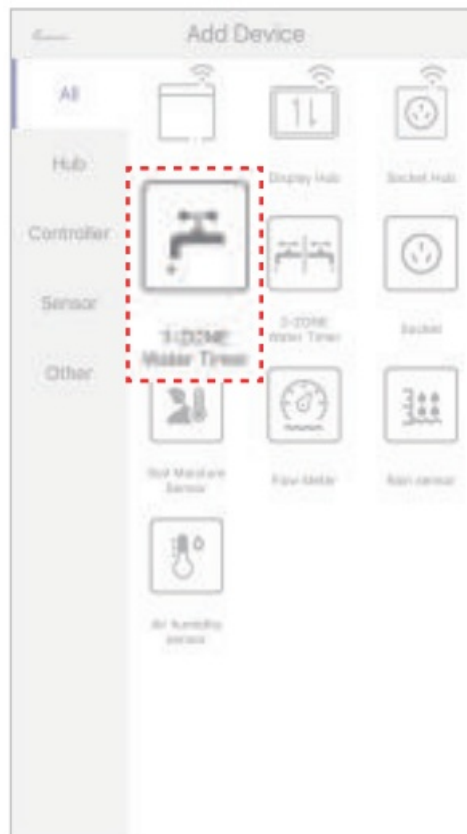


2-2. Hub matching method 1: Smart pairing

Make sure the indicator light is flashing fast (short press the button to switch the flashing mode) Matching order: "+" (Home) → "socket hub" → set WIFI information with correct WIFI password → set the device name



2-3 Hub matching method 2: AP networking Make sure the indicator light flashes slowly (short press the button to switch the flashing mode) Matching order: “+” (Home) → “socket hub” → Set WIFI information with correct WIFI password → Switch the pairing mode Switch mode → Connect the phone to HomGar_xxx Hotspot → Set the device name Note: If the network pairing fails within 120 seconds, check the settings and retry, or switch the pairing method into the AP pairing (hub short press button, app click “Switch mode” Also ensure that the flashing light pattern is consistent with the assigned pattern)

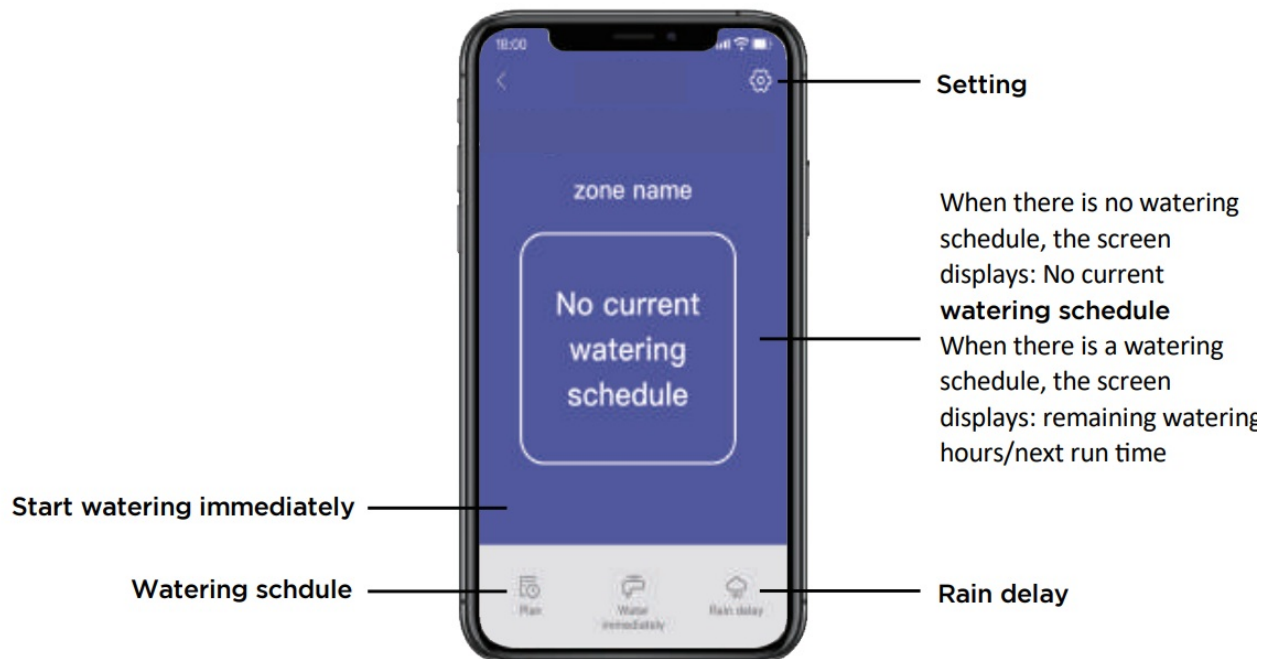


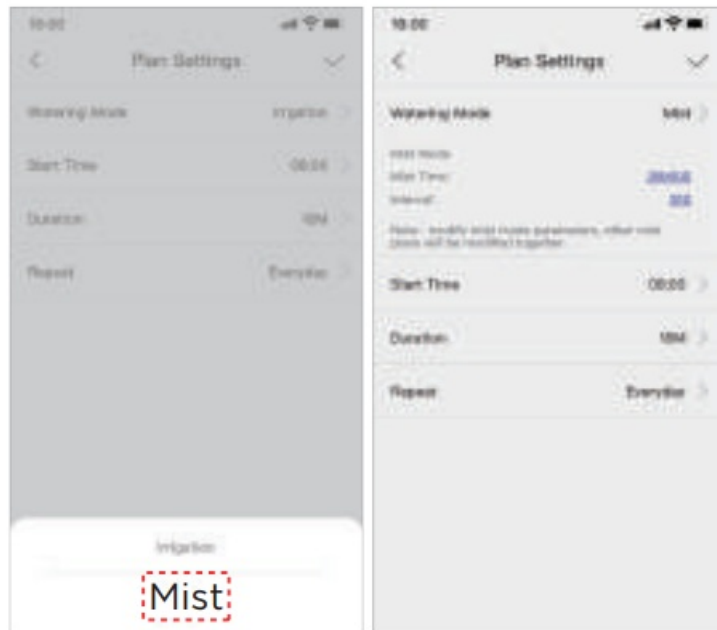
3. Adding a valve

3-1. Put batteries in the valve and connect it to water pipe, press and hold the button on the valve for 5-10 sec until red light flashes to enter pairing mode.

Note: make sure the water valve is closed

3-2. Pairing steps "+" to enter main page → select "1-zone water timer" → "Next" → Pair your device → complete.



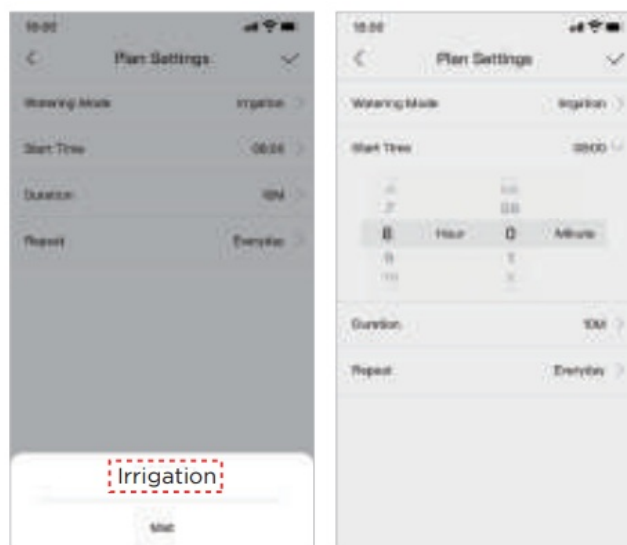
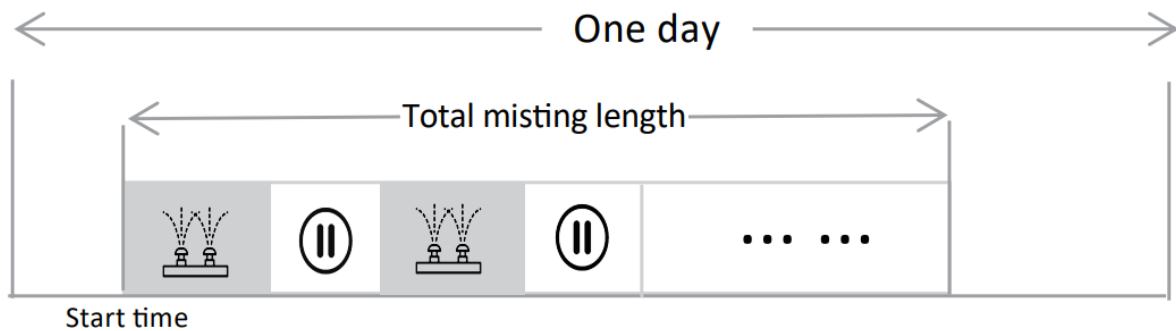


Operating Interface

4-1. Watering schedule

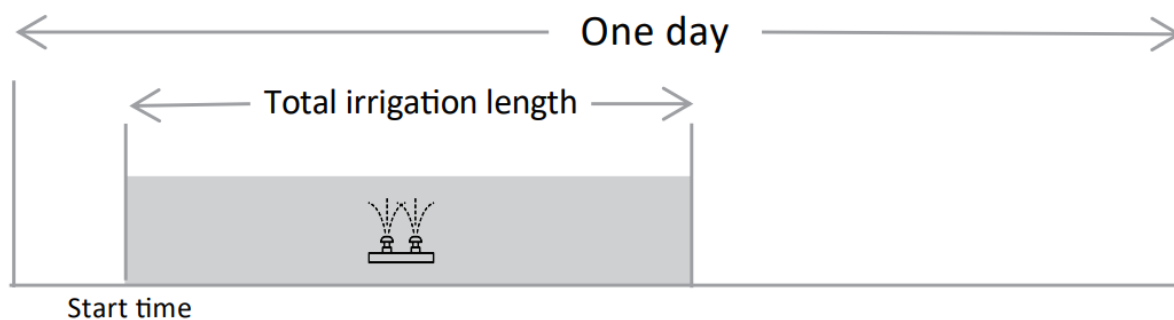
(1) Misting mode

- Set start time(00 00-23 59)→Total misting length(1min-12h)→Misting duration(5s-60min)→Misting interval (5s-60min)→Watering program frequency(Everyday, Odd days, Even days, Custom)



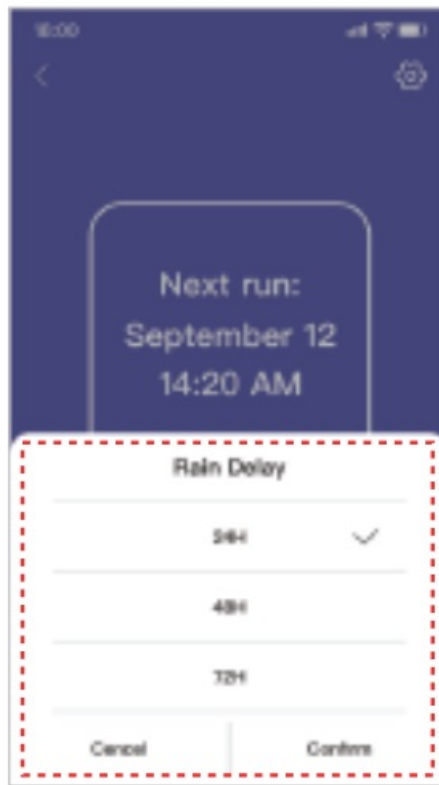
Irrigation mode

- Set start time(00 00-23 59)→Total irrigation length(1min-12h)→Irrigation frequency(Everyday, Odd days, Even days, Custom)



(3) Schedule Calendar Able to check watering schedule for current month, the little dot under the date represents watering times for current date.

! Note: Up to 6 watering schedules can be set at the same time. when preset program is in conflict with other zones, turning on water valve will lower water flow.



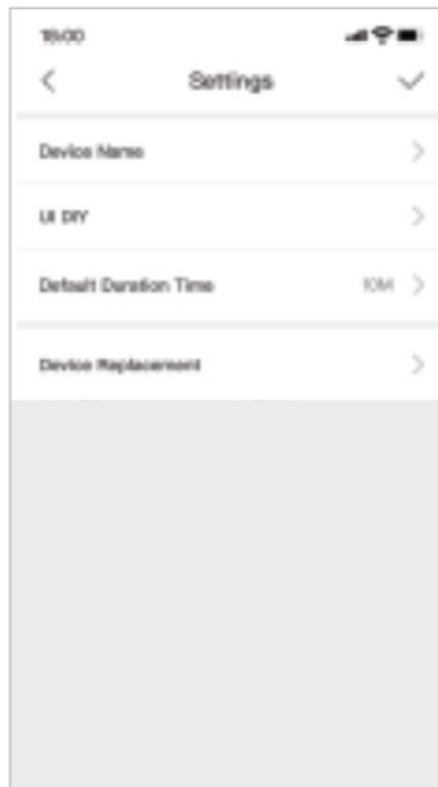
4-2. Rain delay Set up Rain delay duration (24H, 48H, 72H), remaining watering time will be displayed, it will stop automatically when time's up, or shut down manually before time's up.



4-3. Manual Watering Set up manual watering duration (1 min- 12h), remaining watering time will be displayed, it will stop automatically when time's up, or shut down manually before time's up.



Note: After turning on “rain delay” or “Manuel watering”, the Auto watering program will stop, after stopping manual watering, the program will resume but the remain watering duration for the reap period of the program will not be executed.



4-4. Setting

1. Zone Setting

Click Zone1 to change Zone name and default watering time.

2. Custom interface

Change into your preferable background picture and font.

Amazon Alexa

Open the Alexa app on your phone, log in successfully and select “Skills&Games” on the “MORE” page.

- Search for “Homage Intelligence” and select it.
- Click “Enable to use” to enable the skill.
- Enter your HOMGAR APP account & password, then click “Sign In” to bind your HOMGAR APP account and activate your device.

Voice commands.

Alexa → open “zone name ”

Alexa → close “zone name ”

Google Assistant

Open the Google Home app on your phone, sign in, click the “+” symbol in the upper left corner, then click the “Set up device” option, and select “Use Google” . Enter your account password via “Homage Smart” to bind your app account and allow it to access your Google account Voice commands.

ok Google → open “zone name ”

ok Google → close “zone name ”

FAQ

Q1: Why doesn't the water timer opened/closed within the preset time?

- The program is incorrect.
- The water pressure is too low.
- There are particles of dirt or debris inside the

valve. ● There are overlapped plan in the multiple set start times. ● Manual watering is turned on. ● Valve fails. ● The battery is low. ● The faucet is turned off. ● Rain delay is activated.

Q2: Why does the network connection fail?

● Please check if the icon is selected correctly in the app. ● If the device is already connected to another cell phone, please disconnect first. ● Turn off the WLAN connection of your phone and turn it on again. ● Make sure there is sufficient battery power and place the water valve as close as possible to the gateway. ● There are too many devices connected to the router and the WLAN signal is unstable. ● Pairing is only to be performed on 2.4G WLAN networks. ● It is not possible to connect the gateway and water valve on the tablet.

Q3: The hose tap connection/outlet leaks?

● The O-ring is connected correctly to the hose tap. ● The connection outlet or water pipe is broken. ● The faucet and water pipe has a different thread. If necessary, please use an appropriate adapter or PTFE tape.

Q4: Is it compatible with water bucket or drip system?

● No, because the water pressure of water bucket and drip system does not meet the pressure standard for water valve.

After-sales Service



<https://www.youtube.com/channel/UC-rdA7rXtm4tCvm3EdkGqEA>



<https://wa.me/qr/TUIVFNRVTOAPB1>

The timer have one year warranty, if you have any questions, please feel free to contact via.
support@diivoosmart.com

If you need E-Manual, please scan the QR code or contact customer service.



Manufacture: Zhuhai Tessa Power
Technology Co., Ltd.



Company Name: YH Consulting Limited

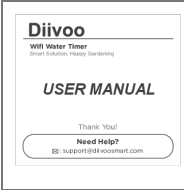
Address: C/O YH Consulting Limited Office 147, Centurion House, London Road,
Staines-upon-Thames, Surrey, TW18 4AX



Company: E-Crosscuts GmbH

Address: Mainer Landstr.69,60329 Frankfurt am Main

Documents / Resources

	<p>Diivoo WT-07W WiFi Hose Timer [pdf] User Manual</p> <p>WT-07W, WT-07W WiFi Hose Timer, WiFi Hose Timer, Hose Timer, Timer</p>
---	--

References

- [User Manual](#)