



DIGITUS DS-45339 USB C 2 Port MST Video Hub Installation Guide

[Home](#) » [DIGITUS](#) » DIGITUS DS-45339 USB C 2 Port MST Video Hub Installation Guide 



2-PORT MST VIDEO
HUB (USB-C™ ->
2x DISPLAYPORT)



Quick Installation Guide
DS-45339

Contents

- [1 Introduction](#)
- [2 Features](#)
- [3 Package content](#)
- [4 Specifications](#)
- [5 Connection Diagram](#)
- [6 Documents / Resources](#)
 - [6.1 References](#)
- [7 Related Posts](#)

Introduction

The DIGITUS® MST Hub uses Multi Stream Transport (DisplayPort™ 1.2 function), which allows multiple AV signals to be transported over a single cable. This enables the use of multiple monitors that are connected via the MST Hub configuration. The MST Hub can distribute different video streams to the two connected screens. In general, it supports three reproduction modes: Mirror (1 signal mirrored on 2 displays), extend (2 signals on 2 displays), distribute (1 signal distributed across 2 displays).

Features

- Supports DP 1.4 (Alt mode) with maximum 8.1 Gbps per channel, max. 32.4 Gbps on 4 channels
- Supports Windows OS (11, 10)
- Resolution host PC with DP 1.4: Max. 2x 4K/60Hz
- Resolution host PC with DP 1.2: Max. 2x 4K/30Hz
- Power supply via a USB-C™ connection – BUS powered
- No driver or software required – Configuration via the display settings in Windows OS
- Supports HDCP 2.2 / 1.4 as well as HDR (High Dynamic Range)
- Supports MST (Multi Stream Transport) & SST – Single Stream Transport

Package content

- 1x MST Video Hub (USB-C™ -> 2x DisplayPort)
- 1x QIG

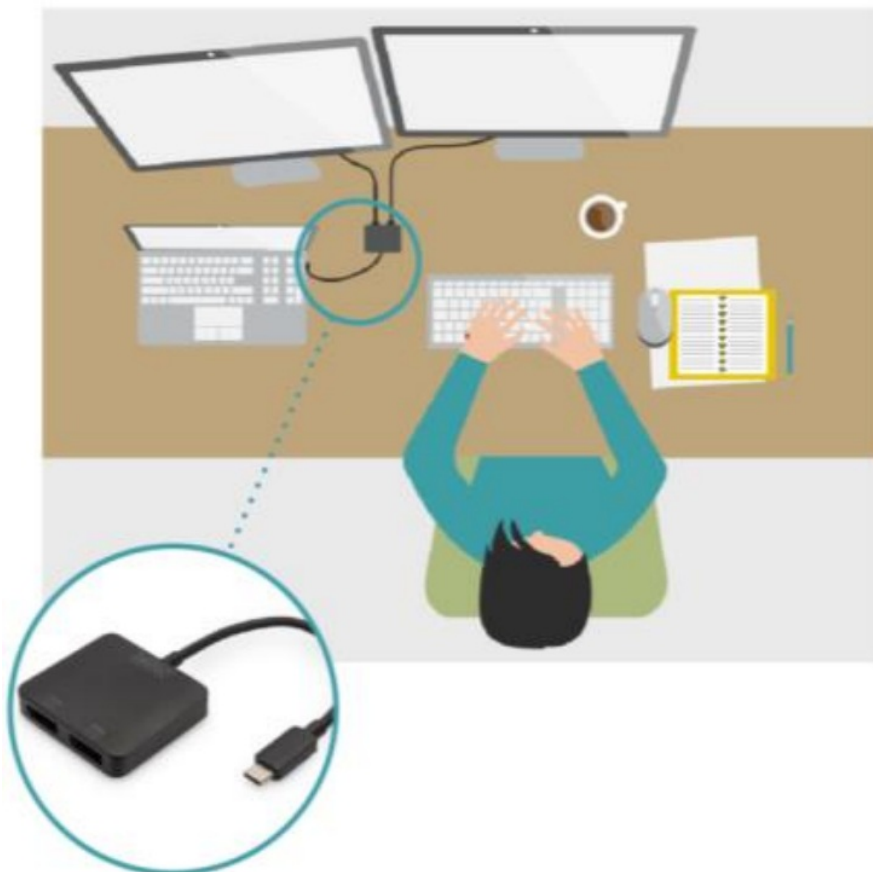
Specifications

1. 1x USB-C™ input
2. 2x DisplayPort output
3. Housing: ABS
4. Operating temperature: 0-45°C
5. Standby power consumption: approx. 0.5 W
6. Dimensions: L 5.5 x W 5 x H 1.15 cm
7. Weight: 43 g
8. Color: Black

Note:

1. To achieve the resolutions stated above, the host PC should support DP 1.4 (Alt mode). If your PC only supports DP 1.2, the corresponding resolutions are reduced due to the bandwidth restriction
2. The resolution combinations stated above are a theoretical reference, the actual resolutions depend on the connected host PC as well as the display
3. To use the full scope of features, make sure that your device (graphics card) uses DP 1.4.
4. If you use a DisplayPort 1.1 graphics card, the MST Hub acts as a splitter and mirrors your video source on all displays
5. Functionality can be restricted depending on the specifications of your device and
6. MST Hubs cannot increase the number of screens supported by a graphics card. Every graphics card has a limited number of screens that it can support. Please check your specifications in advance.
7. Requires at least a host system with DP 1.2/HBR2/MST or higher (recommended)
8. Supports AMD, Nvidia and Intel graphics cards

Connection Diagram



Hereby Assmann Electronic GmbH declares that the Declaration of Conformity is part of the shipping content. If the Declaration of Conformity is missing, you can request it by post under the below mentioned manufacturer address.

Auf dem Schüffel 3
58513 Lüdenscheid
Germany

Documents / Resources

 <p>DIGITUS[®] 2-PORT MST VIDEO HUB (USB-C™ -> 2x DISPLAYPORT) Quick Installation Guide DS-4539</p>	<p>DIGITUS DS-45339 USB C 2 Port MST Video Hub [pdf] Installation Guide DS-45339, USB C 2 Port MST Video Hub, DS-45339 USB C 2 Port MST Video Hub, 2 Port MST Video Hub, MST Video Hub, Video Hub, Hub</p>
--	--

References

-  [ASSMANN Electronic GmbH | Germany](#)