



DIGITUS DS-45338 2 Port MST Video Hub Installation Guide

[Home](#) » [DIGITUS](#) » DIGITUS DS-45338 2 Port MST Video Hub Installation Guide 

Contents

- [1 DS-45338 2 Port MST Video Hub](#)
- [2 Product Information](#)
- [3 Product Usage Instructions](#)
- [4 Connection Diagram](#)
- [5 Introduction](#)
- [6 Features](#)
- [7 Package content](#)
- [8 Specifications](#)
- [9 Connection Diagram](#)
- [10 Documents / Resources](#)
 - [10.1 References](#)



DS-45338 2 Port MST Video Hub



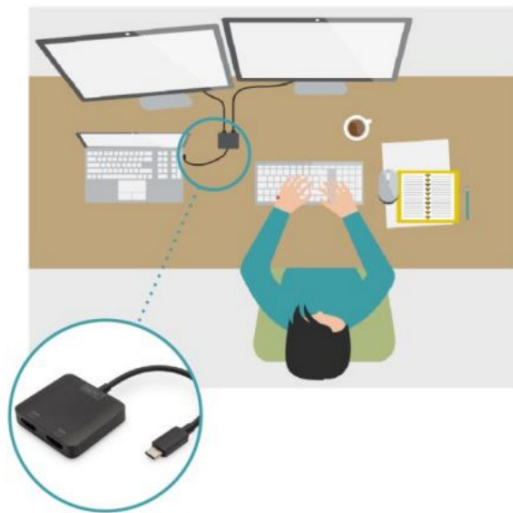
Product Information

The 2-Port MST Video Hub (USB-CTM -> 2x HDMI) is a device that supports DP 1.4 (Alt mode) with a maximum of 8.1 Gbps per channel and a maximum of 32.4 Gbps on 4 channels. It supports Windows OS (11, 10) with a resolution host PC with DP 1.4 of up to 2x 4K/60Hz and with DP 1.2 of up to 2x 4K/30Hz. The device supports 3 display modes: Mirror (1 signal mirrored on 3 displays), extend (3 signals on 3 displays), distribute (1 signal distributed across 3 displays). It also supports HDCP 2.2 / 1.4 as well as HDR (High Dynamic Range). The package content includes 1 MST Video Hub (USB-CTM -> 2x HDMI) and 1 Quick Installation Guide.

Product Usage Instructions

1. Connect the USB-C input of the MST Video Hub to your host system with DP 1.2/HBR2/MST or higher (recommended).
2. Connect the HDMI outputs of the MST Video Hub to your display devices.
3. If you want to achieve the resolutions stated in the manual, ensure that your device and operating system specifications meet the requirements.
4. Note that the functionality of the device may be restricted depending on the specifications of your device and operating system.
5. The MST Hubs cannot increase the number of screens supported by a graphics card. Every graphics card has a limited number of screens that it can support. Please check your specifications in advance.
6. The device supports AMD, Nvidia, and Intel graphics cards.

Connection Diagram



Introduction

The DIGITUS® MST Hub uses Multi Stream Transport (DisplayPort™ 1.2 function), which allows multiple AV signals to be transported over a single cable. This enables the use of multiple monitors that are connected via the MST Hub configuration. The MST Hub can distribute different video streams to the two connected screens. In general, it supports three reproduction modes: Mirror (1 signal mirrored on 2 displays), extend (2 signals on 2 displays), distribute (1 signal distributed across 2 displays).

Features

- Supports DP 1.4 (Alt mode) with maximum 8.1 Gbps per channel, max. 32.4 Gbps on 4 channels

- Supports Windows OS (11, 10)
- Resolution host PC with DP 1.4: Max. 2x 4K/60Hz
- Resolution host PC with DP 1.2: Max. 2x 4K/30Hz
- Power supply via a USB-C™ connection – BUS powered
- No driver or software required – Configuration via the display settings in Windows OS
- Supports 3 display modes: Mirror (1 signal mirrored on 3 displays), extend (3 signals on 3 displays), distribute (1 signal distributed across 3 displays)
- Supports HDCP 2.2 / 1.4 as well as HDR (High Dynamic Range)
- Supports MST (Multi Stream Transport) & SST – Single Stream Transport

Package content

- 1x MST Video Hub (USB-C™ -> 2x HDMI)
- 1x QIG

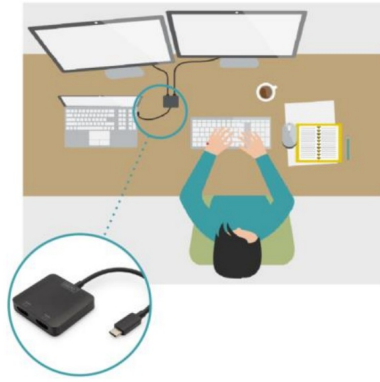
Specifications

1. 1x USB-C™ input
2. 2x HDMI output
3. Housing: ABS
4. Operating temperature: 0-45°C
5. Standby power consumption: approx.0.5 W
6. Dimensions: L 5.5 x W 5 x H 1.15 cm
7. Weight: 43 g
8. Color: Black

Note:

1. To achieve the resolutions stated above, the host PC should support DP 1.4 (Alt mode). If your PC only supports DP 1.2, the corresponding resolutions are reduced due to the bandwidth restriction
2. The resolution combinations stated above are a theoretical reference, the actual resolutions depend on the connected host PC as well as the display
3. To use the full scope of features, make sure that your device (graphics card) uses DP 1.4.
4. If you use a DisplayPort 1.1 graphics card, the MST Hub acts as a splitter and mirrors your video source on all displays
5. Functionality can be restricted depending on the specifications of your device and operating system
6. MST Hubs cannot increase the number of screens supported by a graphics card. Every graphics card has a limited number of screens that it can support. Please check your specifications in advance.
7. Requires at least a host system with DP 1.2/HBR2/MST or higher (recommended)
8. Supports AMD, Nvidia and Intel graphics cards

Connection Diagram





Hereby Assmann Electronic GmbH declares that the Declaration of Conformity is part of the shipping content. If the Declaration of Conformity is missing, you can request it by post under the below-mentioned manufacturer address.

www.assmann.com

ASSMANN Electronic GmbH Auf dem Schüffel 3 58513 Lüdenscheid Germany

Documents / Resources

 <p>2-PORT MST VIDEO HUB (USB-C™ -> 2x HDMI)</p>  <p>Quick Installation Guide DS-45338</p>	<p>DIGITUS DS-45338 2 Port MST Video Hub [pdf] Installation Guide DS-45338, DS-45338 2 Port MST Video Hub, 2 Port MST Video Hub, MST Video Hub, Hub, Video Hub</p>
--	--

References

- [A ASSMANN Electronic GmbH | Germany](#)