



## DIGITUS DN-95623 Metering Module of Basic local monitored PDU User Manual

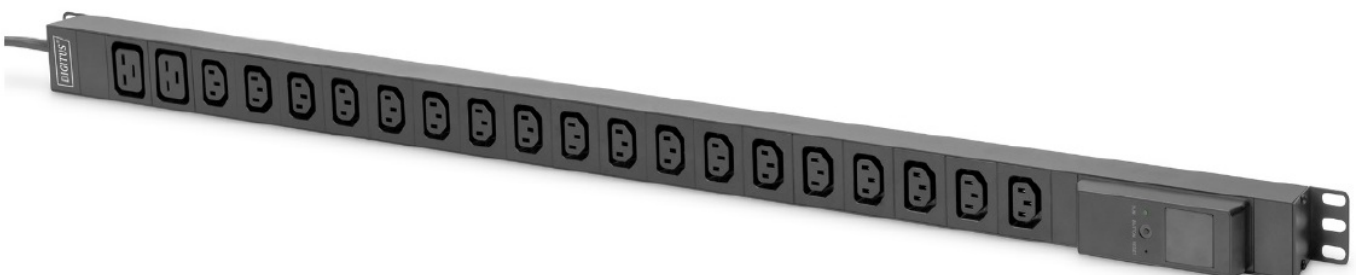
[Home](#) » [DIGITUS](#) » DIGITUS DN-95623 Metering Module of Basic local monitored PDU User Manual 

### Contents

- [1 DIGITUS DN-95623 Metering Module of Basic local monitored PDU](#)
- [2 Safety and Grounding](#)
- [3 Overview](#)
- [4 Hardware Introduction](#)
  - [4.1 Product sketch](#)
  - [4.2 Interactive display](#)
- [5 Technical Specification](#)
- [6 Documents / Resources](#)
  - [6.1 References](#)
- [7 Related Posts](#)



**DIGITUS DN-95623 Metering Module of Basic local monitored PDU**



## Safety and Grounding

**Read the following information before installing or operating your DIGITUS Power Distribution Unit:**

- This PDU is intended for indoor use only.
- This PDU must not be must not be operated one behind the other!
- Operation only in dry and closed rooms.
- This PDU may not be operated covered. Always ensure free accessibility.
- The maximum power stated on the rating plate must not be exceeded.
- Plug this PDU into a three-wire, grounded power outlet only.

The power outlet must be connected to appropriate branch circuit/ mains protection (fuse or circuit breaker).

Connection to any other type of power outlet may result in a shock hazard.

- Use only the supplied brackets of mounting.
- Check that the power cord, plug, and socket are in good condition.
- Voltage free only when the power plug is unplugged.
- Disconnect the PUD from the power outlet before you install or connect equipment to reduce the risk of electric shock when you cannot verify grounding. Reconnect the PDU to the power outlet only after you make all connections.
- Operation under unfavorable environmental conditions must be avoided. (Humidity over 80% relative, wet, ambient temperatures above 50 ° C, solvents, flammable gases, dust, vapors).
- If external damage to this PDU is detected, do not operate this PDU. Take this PDU immediately out of service if external damage is detected.
- Do not pour liquids over the power strip. There is a high risk of fire or life-threatening electric shock.
- When opening the power strip, live parts can be exposed. There is a risk of electric shock. The power strip may only be opened by a specialist. When opening the power strip, live parts can be exposed.  
There is a risk of electric shock. The power strip may only be opened by a specialist.

## Overview

Basic Metered PDU is a data center power distribution device with local monitoring function. It can accurately monitor voltage, current, power and electrical energy with an accuracy of  $\pm 1\%$ , providing customers with safe and stable power distribution services.

## Hardware Introduction

### Product sketch

Basic Metered PDU is equipped with a hot-swappable monitoring module, which can be replaced without power interruption of the devices when necessary.

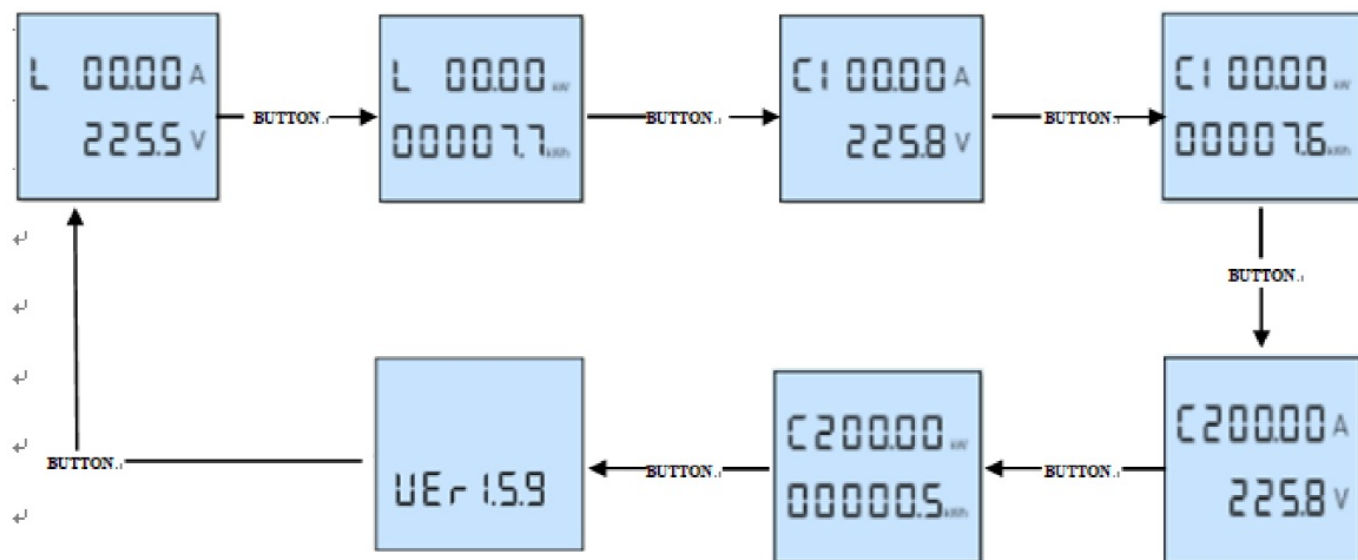


1. Screen: LCD screen
2. RUN: Run indicator (flashes at intervals of 1 second during normal operation)
3. BUTTON: Button key (switch display content)
4. RESET: Restart the module

#### **Interactive display**

##### **Single phase two way monitoring module (AC)**

Press the "BUTTON" key to turn the pages, the first to sixth screens will display the current (00.00A), voltage (225.5V), active power (00.00kW), and electrical energy (00007.7kWh) of L, C1 circuit and C2 circuit in sequence, and the seventh screen displays version number (VER1.5.9), as shown below.



## Technical Specification

Input	Single phase	Rated voltage	100-240VAC 50~60Hz
		Maximum total load current	16A/ 32A
	Three- phase	Rated voltage	200-400VAC 50~60Hz
		Maximum total load current	3×16A, 3×32A
	Direct current	Rated voltage	240VDC/ 336VDC
		Maximum total load current	40A/ 60A
	Overload protection		Circuit breaker (optional)
	Input current detection and display		Detection accuracy: ±1%; Display accuracy: 0.01A
			Display mode liquid crystal display; Display direction: vertical/horizontal;

	Input voltage detection and display		Detection accuracy: $\pm 1\%$ ; Display accuracy: 0.1V
			Display mode: liquid crystal display; Display direction: vertical/horizontal;
<b>Output</b>	Single phase	Rated voltage	100-240VAC 50~60Hz
		Maximum total load current	16A/ 32A
	Three- phase	Rated voltage	100-240VAC 50~60Hz
		Maximum total load current	3×16A, 3×32A

	Direct current	Rated voltage	240VDC/ 336VDC
		Maximum total load current	40A/ 60A
	Output socket system		See “Socket Standard and Output Unit Configuration Table” for details.
	Output unit specification		Accept customized production
Monitoring function (Local)			Voltage (V), Current (A), Active Power(kW ), Energy (kWh)
Alarm	Alarm condition		When total load current/voltage current exceed the rated value
	Alarm method		Buzzer alarm
Physical characteristics	Product dimensions		Depends on the actual model
	Properties of shell material		ABS & PC
	Case color		Black
	Mounting Style		Side brackets mounting/ Rear button mounting
Environment	Working temperature		0°C~45°C
	Relative humidity		30~90%
	Storage temperature		-20°C ~ +70°C

This is a Class A product. In home environment, this product may cause radio interference. In this case, the user may be required to take appropriate measures.

Hereby Assmann Electronic GmbH, declares that the Declaration of Conformity is part of the shipping content. If the Declaration of Conformity is missing, you can request it by post under the below mentioned manufacturer


address.

[www.assmann.com](http://www.assmann.com)

Assmann Electronic GmbH  
Auf dem Schüffel 3  
58513 Lüdenscheid  
Germany



## Documents / Resources

 The image shows the cover of a user manual. At the top, there is a small logo with the word "DIGITUS" inside a square. Below it, the text "Metering Module of Basic local monitored PDU" is written. In the center, there is a photograph of a long, thin, black electronic module. At the bottom, the word "Manual" is written, followed by "DN-95623" in a smaller font.	<p><a href="#">DIGITUS DN-95623 Metering Module of Basic local monitored PDU</a> [pdf] User Manual DN-95623, Metering Module of Basic local monitored PDU</p>
--	---

## References

- [A ASSMANN Electronic GmbH | Germany](#)

[Manuals+](#).