

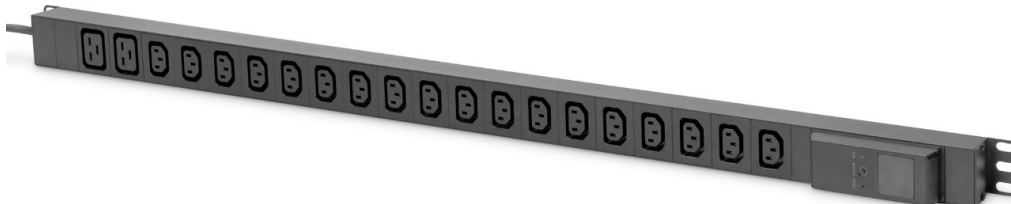


DIGITUS DN-95622 Metering Module of Basic Local Monitored PDU User Manual

[Home](#) » [DIGITUS](#) » DIGITUS DN-95622 Metering Module of Basic Local Monitored PDU User Manual 



Metering Module of Basic local monitored PDU



Manual
DN-95622

Contents

- [1 Safety and Grounding:](#)
- [2 Overview](#)
- [3 Hardware Introduction](#)
- [4 Technical Specification](#)
- [5 Documents / Resources](#)
 - [5.1 References](#)
- [6 Related Posts](#)

Safety and Grounding:

Read the following information before installing or operating your DIGITUS Power Distribution Unit:

- This PDU is intended for indoor use only.

- This PDU must not be operated one behind the other!
- Operation only in dry and closed rooms.
- This PDU may not be operated covered. Always ensure free accessibility.
- The maximum power stated on the rating plate must not be exceeded.
- Plug this PDU into a three-wire, grounded power outlet only.

The power outlet must be connected to the appropriate branch circuit/ mains protection (fuse or circuit breaker).

Connection to any other type of power outlet may result in a shock hazard.

- Use only the supplied brackets of mounting.
- Check that the power cord, plug, and socket are in good condition.
- Voltage is free only when the power plug is unplugged.
- Disconnect the PUD from the power outlet before you install or connect equipment to reduce the risk of electric shock when you can not verify grounding.

Reconnect the PDU to the power outlet only after you make all connections.

- Operation under unfavorable environmental conditions must be avoided. (Humidity over 80% relative, wet, ambient temperatures above 50 ° C, solvents, flammable gases, dust, vapors).
- If external damage to this PDU is detected, do not operate this PDU.

Take this PDU immediately out of service if external damage is detected.

- Do not pour liquids over the power strip. There is a high risk of fire or life-threatening electric shock.
- When opening the power strip, live parts can be exposed.

There is a risk of electric shock. The power strip may only be opened by a specialist. When opening the power strip, live parts can be exposed.

There is a risk of electric shock. The power strip may only be opened by a specialist.

Overview

Basic Metered PDU is a data center power distribution device with a local monitoring function. It can accurately monitor voltage, current, power, and electrical energy with an accuracy of $\pm 1\%$, providing customers with safe and stable power distribution services.

Hardware Introduction

1. Product sketch

Basic Metered PDU is equipped with a hot-swappable monitoring module, which can be replaced without power interruption of the devices when necessary.



1. Screen: LCD screen

2. RUN: A run indicator (flashes at intervals of 1 second during normal operation)

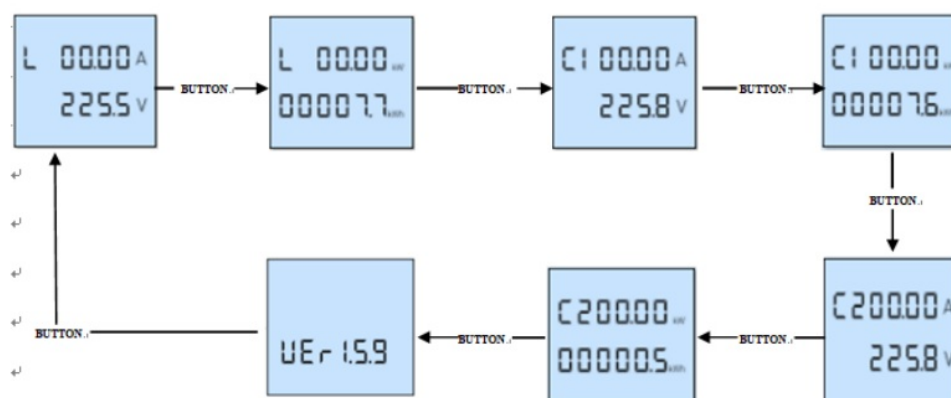
3. BUTTON: Button key (switch display content)

4. RESET: Restart the module

2. Interactive display

2.1 Single-phase two way monitoring module (AC)

Press the “BUTTON” key to turn the pages, the first to sixth screens will display the current (00.00A), voltage (225.5V), active power (00.00kW), and electrical energy (00007.7kWh) of L, C1 circuit, and C2 circuit in sequence, and the seventh screen displays version number (VEr1.5.9), as shown below.



Technical Specification

	Single-pha	Rated voltage	100-240VAC 50~60Hz
--	------------	---------------	--------------------

Input	se	Maximum total load current	16A/ 32A
	Three-phase	Rated voltage	200-400VAC 50~60Hz
		Maximum total load current	3x1GA, 3x32A
	Direct current	Rated voltage	240VDC/ 336VDC
		Maximum total load current	40A/ 60A
	Overload protection		Circuit breaker (optional)
	Input current detection and display	Detection accuracy: ±1%; Display accuracy: 0.01A	
		Display mode: liquid crystal display; Display direction: vertical/horizontal;	
Input voltage detection and display	Detection accuracy: ±1%; Display accuracy: 0.1V		
	Display mode: liquid crystal display; Display direction: vertical/horizontal;		
Output	Single-phase	Rated voltage	100-240VAC 50~60Hz
		Maximum total load current	16A/ 32A
	Three-phase	Rated voltage	100-240VAC 50~60Hz
		Maximum total load current	3x16A, 3x32A
	Direct current	Rated voltage	240VDC/ 336VDC
		Maximum total load current	40A/ 60A
	Output socket system		See “Socket Standard and Output Unit Configuration Table” for details.
	Output unit specification		Accept customized production
Monitoring function (Local)			Voltage (V), Current (A), Active Power(kW), Energy (kWh)
Alarm	Alarm condition		When total load current/voltage-current exceeds the rated value
	Alarm method		Buzzer alarm
Physical characteristics	Product dimensions		Depending on the actual model
	Properties of shell material		ABS & PC
	Case color		Black
	Mounting Style		Side brackets mounting/ Rear button mounting
Environment	Working temperature		0°C~45°C
	Relative humidity		30~90%

	Storage temperature	-20°C — +70°C
--	---------------------	---------------

This is a Class A product. In-home environment, this product may cause radio interference.
In this case, the user may be required to take appropriate measures.

Hereby Assmann Electronic GmbH declares that the Declaration of Conformity is part of the shipping content. If the Declaration of Conformity is missing, you can request it by post under the below-mentioned manufacturer address.




www.assmann.com

Assmann Electronic GmbH
Auf dem Schüffel 3
58513 Lüdenscheid
Germany



Documents / Resources

	<p>DIGITUS DN-95622 Metering Module of Basic Local Monitored PDU [pdf] User Manual DN-95622, Metering Module of Basic Local Monitored PDU</p>
---	---

References

- [ASSMANN Electronic GmbH | Germany](#)
- [User Manual](#)

Manuals+. [Privacy Policy](#)

This website is an independent publication and is neither affiliated with nor endorsed by any of the trademark owners. The "Bluetooth®" word mark and logos are registered trademarks owned by Bluetooth SIG, Inc. The "Wi-Fi®" word mark and logos are registered trademarks owned by the Wi-Fi Alliance. Any use of these marks on this website does not imply any affiliation with or endorsement.