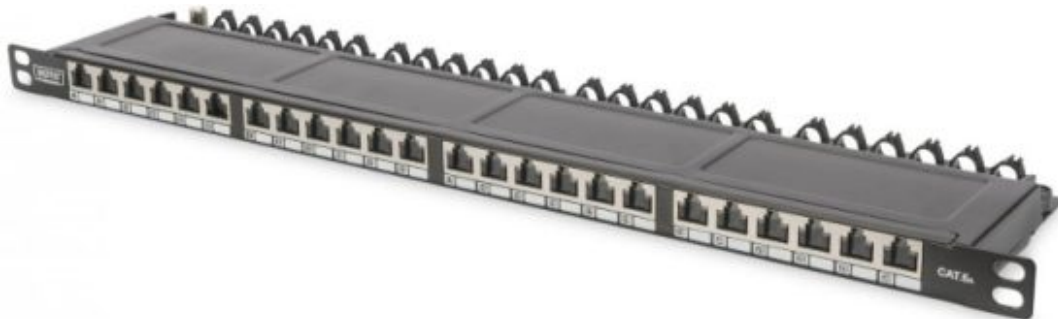


## DN-91624S-SL-EA Digitus CAT 6A, Class EA High Density Patch Panel Installation Guide

[Home](#) » [DIGITUS](#) » DN-91624S-SL-EA Digitus CAT 6A, Class EA High Density Patch Panel Installation Guide 



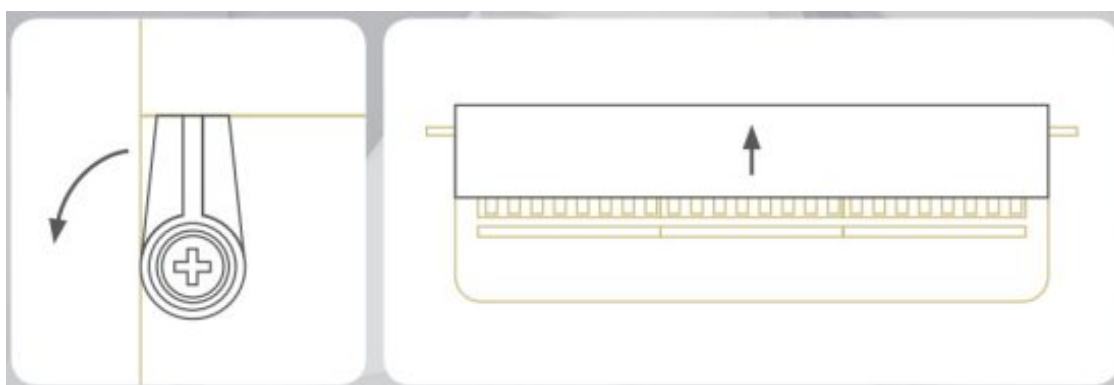
### INSTALLATION GUIDE PATCH PANEL (SHIELDED)

#### Contents

- [1 DN-91624S-SL-EA Digitus CAT 6A, Class EA High Density Patch Panel](#)
- [2 Documents / Resources](#)
  - [2.1 References](#)

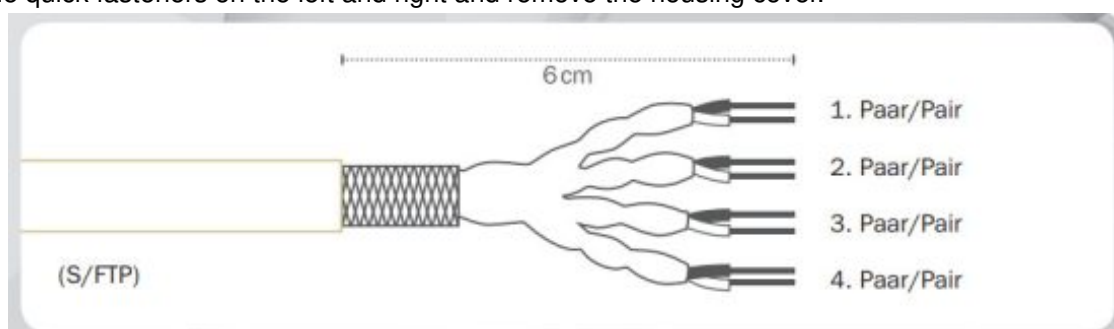
**DN-91624S-SL-EA Digitus CAT 6A, Class EA High Density Patch Panel**

Type	Category	Item code
High Density	CAT 6A CAT 6	DN-91624S-SL-EA / DN-91624S-SL-EA-G DN-91624S-SL-SH / DN-91624S-SL-SH-G
19"	CAT 6A CAT 6 CAT 5e	DN-91624S-EA / DN-91624S-EA-B DN-91624S / DN-91624S-B / DN-91616S / DN-91616S-B DN-91524S / DN-91516S
10"	CAT 6 CAT 5e	DN-91612S / DN-91612S-G / DN-91608S / DN-91608S-G DN-91512S / DN-91512S-G / DN-91508S / DN-91508S-G
Desktop	CAT 6A CAT 6 CAT 5e	DN-91612SD-EA / DN-91612SD-EA-G DN-91608SD / DN-91608SD-G DN-10001



### Step 1: REMOVE THE COVER

Loosen the quick fasteners on the left and right and remove the housing cover.



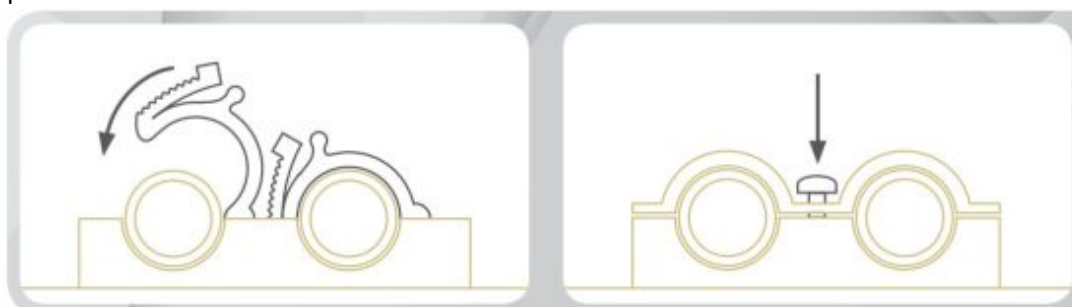
### Step 2: REMOVE THE CABLE SHEATH

Cut and remove approx. 6 cm of the cable sheath using a cable stripper.

**S/FTP:** Route the braid shield twisted along the cable to the back.

**F/UTP:** Wrap the drain wire around the cable sheath.

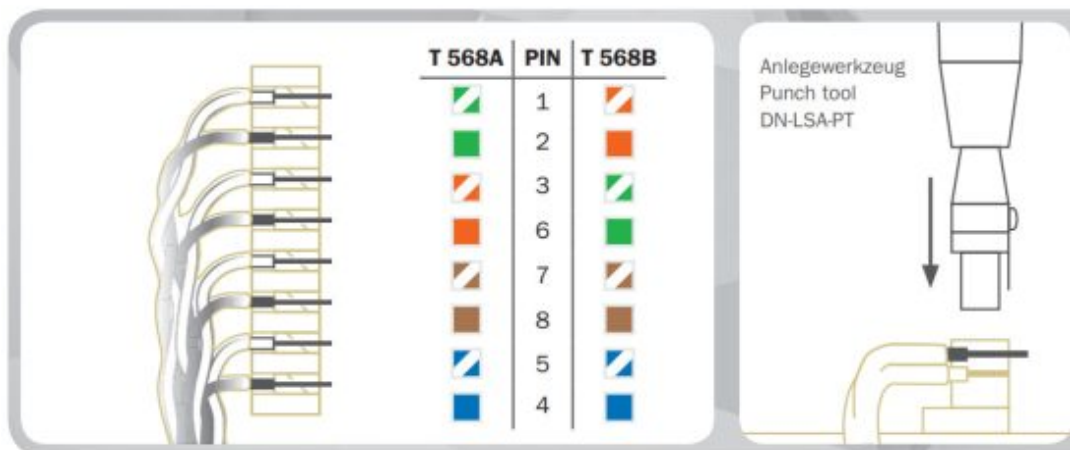
**U/FTP:** Wrap the drain wire around the cable sheath.



### Step 3: CABLE FIXINGS

**Locking clamp** – Fix the data cable with a locking clip. For grounding, the braid shield (S/FTP); drain wire (F/UTP, U/FTP) with the front locking clamp (metallized).

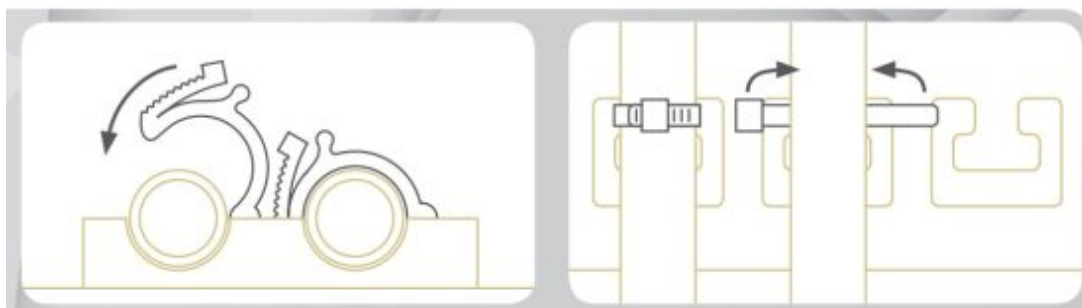
**Cable clamp** – Fix the data cable with a cable clamp and tighten the screw. Two data cables are fixed at the same time. For grounding, the braid shield (S/FTP); drain wire (F/UTP, U/FTP) with the cable clamp.



#### Step 4: CONNECTION (T568A / T568B)

Lay the wires in the insulation displacement clamp according to the specified coding, the twisting and the foil shield (S/FTP, U/FTP) must be maintained up to the insulation displacement terminal!

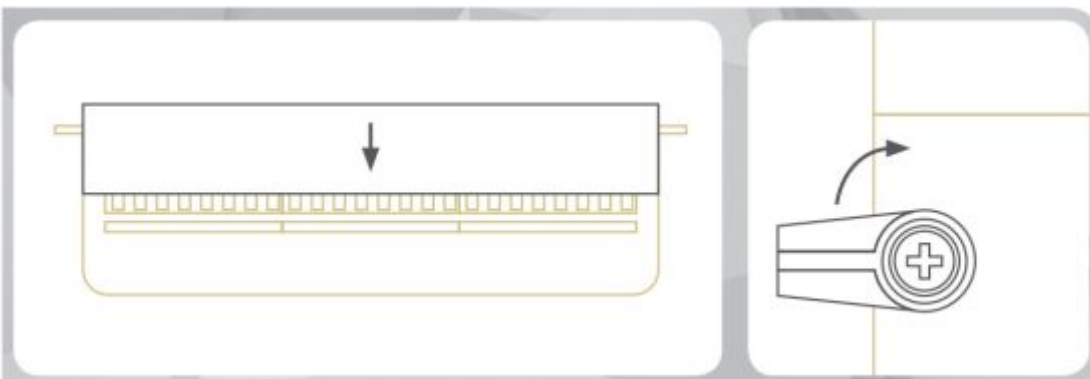
Press the wires into the insulation displacement clamp with the help of a punch-down tool (DN-LSA-PT) and cut off the excess wire ends.



#### Step 5: STRAIN RELIEF

**Locking clamp** – Fix the data cable to the strain relief by means of (rear) locking clamp.

**Cable tie** – Fix the data cable with a cable tie.



#### Step 6: INSTALL THE COVER

Place the housing cover on the patch panel and close the quick fasteners.


**ASSMANN** Electronic GmbH declares that the product complies with the requirements and provisions of RoHS directive 2011/65/EU. You can request the complete Declaration of Conformity by post at the manufacturer's address as stated below.



ASSMANN Electronic GmbH,  
Auf dem Schüffel 3, 58513 Lüdenscheid, Germany  
Manufactured in P.R.C.



## Documents / Resources

	<p><a href="#">DIGITUS DN-91624S-SL-EA Digitus CAT 6A, Class EA High Density Patch Panel</a> [pdf] Installation Guide</p> <p>DN-91624S-SL-EA Digitus CAT 6A Class EA High Density Patch Panel, DN-91624S-SL-EA, Digitus CAT 6A Class EA High Density Patch Panel, CAT 6A Class EA High Density Patch Panel, EA High Density Patch Panel, Density Patch Panel, Patch Panel, Panel</p>
---	--

## References

- [User Manual](#)

### [Manuals+](#), [Privacy Policy](#)

This website is an independent publication and is neither affiliated with nor endorsed by any of the trademark owners. The "Bluetooth®" word mark and logos are registered trademarks owned by Bluetooth SIG, Inc. The "Wi-Fi®" word mark and logos are registered trademarks owned by the Wi-Fi Alliance. Any use of these marks on this website does not imply any affiliation with or endorsement.