

DIGITUS®
DN-91616U Class
Patch Panel



DIGITUS DN-91616U Class Patch Panel Instruction Manual

[Home](#) » [DIGITUS](#) » DIGITUS DN-91616U Class Patch Panel Instruction Manual 

Contents

- [1 DIGITUS DN-91616U Class Patch Panel](#)
- [2 Specifications](#)
- [3 Product Usage Instructions](#)
- [4 Best performance and link quality for your network](#)
- [5 DIGITUS CAT 6, Class E Patch Panel](#)
- [6 FAQ](#)
- [7 Documents / Resources](#)
 - [7.1 References](#)



DIGITUS DN-91616U Class Patch Panel



Specifications

- **Product:** DIGITUS CAT 6, Class E Patch Panel

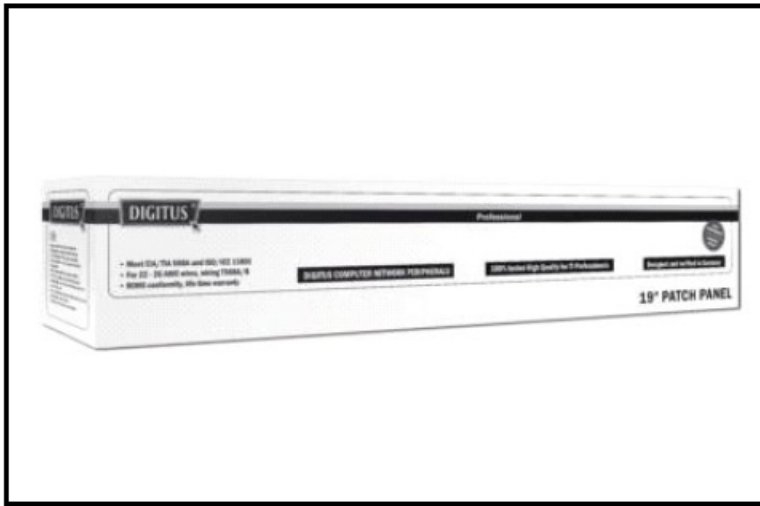
- **Part Number:** DN-91616U
- **EAN:** 4016032241546
- **Type:** Unshielded
- **Ports:** 16-port RJ45, 8P8C
- **Termination:** LSA
- **Mounting:** 1U Rack Mount
- **Color:** Black
- **Dimensions:** 482x44x109 mm

Product Usage Instructions

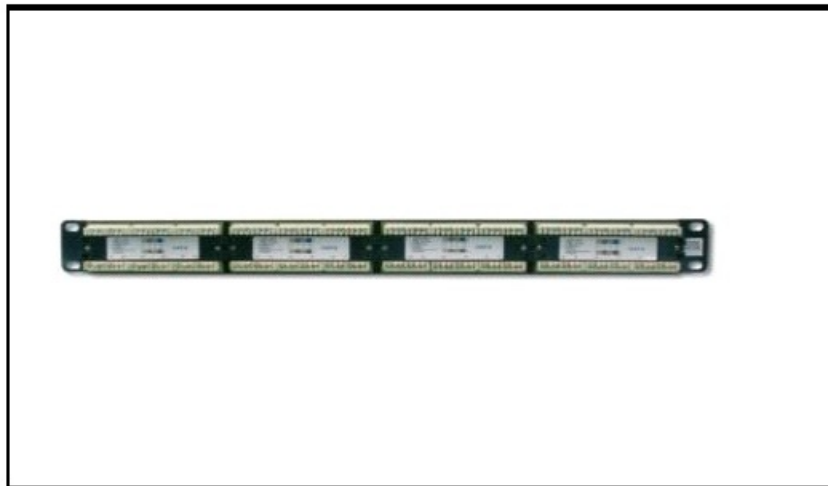
1. Ensure safety precautions are followed before installation.
2. Identify the location for mounting the patch panel in a suitable rack space.
3. Securely mount the patch panel using appropriate screws and tools.
4. Connect the incoming network cables to the RJ45 ports on the patch panel.
5. Terminate the cables using the LSA connectors ensuring proper connections.
6. Organize and manage the cables neatly within the rack space.
7. Verify connections and test network connectivity for all ports.

Best performance and link quality for your network

- Manufactured acc. Link Performance Class E, for up to 250MHz, EN 50173 and ISO/IEC 11801
- Shielded RJ45 jacks
- Cable installation via LSA strips, color codes based on EIA/TIA 568 A & B
- Fixing option for cable ties, central ground connection
- Suitable for 483mm (19") Rack Mount
- Material housing: SECC, 1,5mm Electrogalvanized, Cold-rolled Steel accc. EN1.4301, UNS S30400, AISI 304 and LMSAD110
- **Category:** CAT 6
- **Ports:** 16
- **Color:** black, RAL 9005
- **Units:** 1



DIGITUS CAT 6, Class E Patch Panel



Logistics Number	(pcs)	Weight (kg)	Depth (cm)	Width (cm)	Height (cm)	Volume (cm ³)
Packaging Unit Carton	10	7.31	58.00	54.00	19.00	59,508.00
Packaging Unit Inside	1	0.73	8.00	56.00	10.50	4,704.00
Packaging Unit Single	1	0.73	8.00	56.00	10.50	4,704.00
Net Single (No Packaging)	1	0.00	2.50	48.50	4.50	545.63

Country of origin: China

www.assmann.com

DIGITUS CAT 6, Class E Patch Panel

- **Part no.:** DN-91616U
- **EAN:** 4016032241546

CAT 6, Class E patch panel, unshielded, 16-port RJ45, 8P8C, LSA, 1U, rack mount, black, 482x44x109

Safety notes

- Protect product from moisture
- Avoid antistatic charging when installing the product
- Observe the specifications of the raw cable manufacturer during installation

EU responsible person

- EU-based economic operator ensuring the product complies with the required regulations.
- ASSMANN Electronic GmbH Auf dem Schüffel 3
- <https://www.assmann.com>
- **Email:** info@assmann.com
- Lüdenscheid, Germany

FAQ

Q: What is the maximum data transfer rate supported by this patch panel?

A: The DIGITUS CAT 6, Class E Patch Panel supports data transfer rates up to 1 Gbps.

Q: Can shielded cables be used with this unshielded patch panel?

A: It is recommended to use unshielded cables with this unshielded patch panel for optimal performance.

Q: How can I contact the EU responsible person for this product?

A: You can reach out to the EU responsible person via email at info@assmann.com or visit <https://www.assmann.com> for more information.

Documents / Resources

	<p>DIGITUS DN-91616U Class Patch Panel [pdf] Instruction Manual DN-91616U Class Patch Panel, DN-91616U, Class Patch Panel, Patch Panel</p>
---	--

References

- [A ASSMANN Electronic GmbH | Deutschland](#)
- [User Manual](#)

[Manuals+](#), [Privacy Policy](#)

This website is an independent publication and is neither affiliated with nor endorsed by any of the trademark owners. The "Bluetooth®" word mark and logos are registered trademarks owned by Bluetooth SIG, Inc. The "Wi-Fi®" word mark and logos are registered trademarks owned by the Wi-Fi Alliance. Any use of these marks on this website does not imply any affiliation with or endorsement.